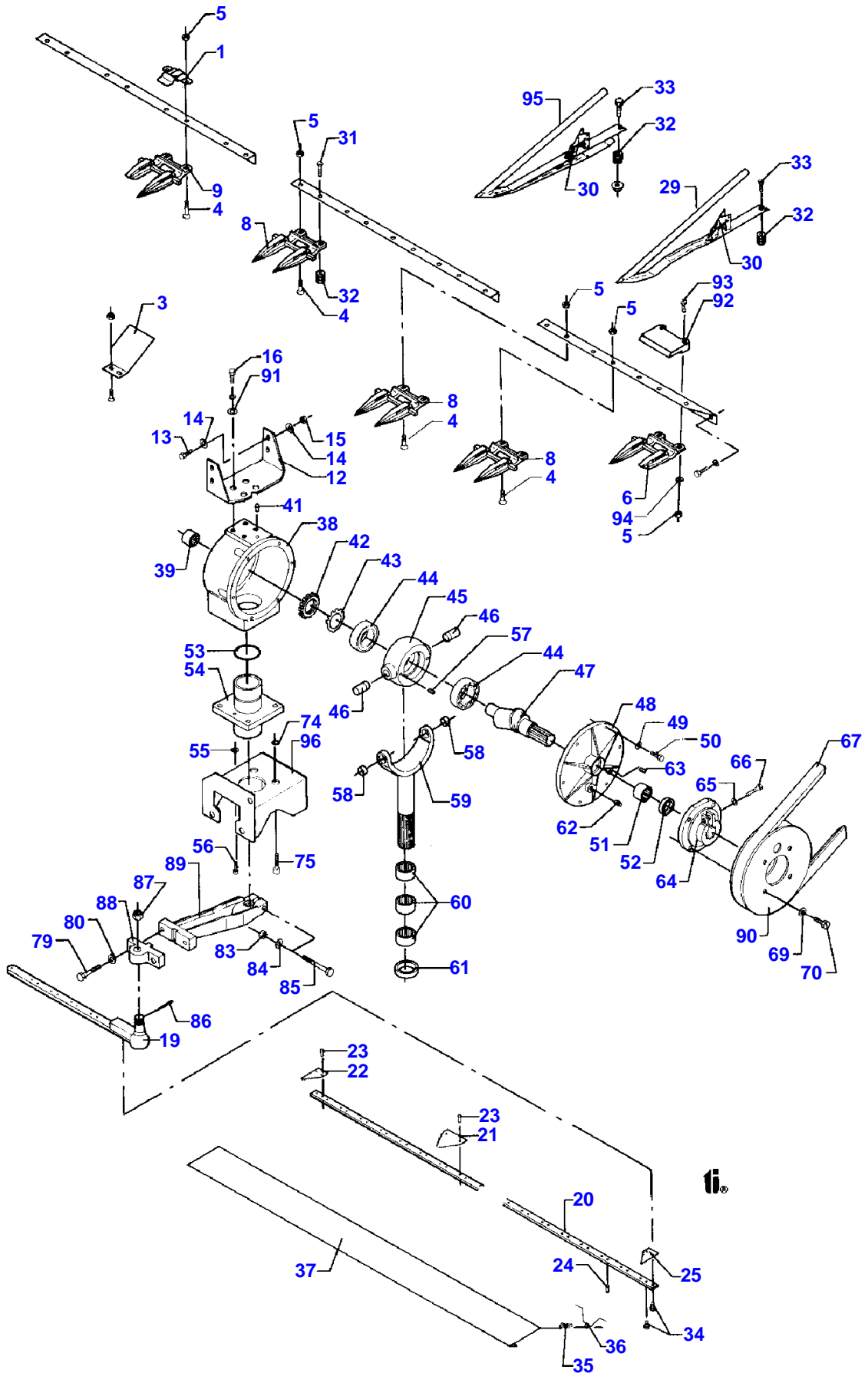


Page Title	Page Number
KNIVES AND FINGERS - FREEFLOW	1-1
FEEDER DRUM 1 - FREEFLOW	1-2
FEEDER AUGER 2 - FREEFLOW	1-3
GUARDING AND REDUCING EQUIPMENT - FREEFLO	1-4
TABLE HOUSING WITH GUARDING - FREEFLO	1-5
KNIVES AND FINGERS - POWERFLOW	1-6
FEEDER DRUM 1 - POWERFLOW	1-7
FEEDER DRUM 2 - POWERFLOW	1-8
GUARDING AND REDUCING EQUIPMENT - POWER FLOW	1-9
TABLE HOUSING WITH GUARDING - POWER FLOW	1-10
POWER FLOW BAND 1	1-11
POWER FLOW BAND 2	1-12
STRAW DIVIDER	1-13
TABLE TRAILER 1	1-14A
TABLE TRAILER 2	1-14B
LIGHTENING BRACKET 1	1-15A
LIGHTENING BRACKET 2	1-15B
SIDE KNIFE	1-16
REEL 1	2-1
REEL 2	2-2
REEL SUSPENSION AND HYDRAULIC CYLINDERS	2-3
REEL SUSPENSION AND HYDRAULIC MOTOR	2-4
FEEDER SHAFT, LOWER	3-1
FEEDER SHAFT, UPPER WITH SUSPENSION	3-2
FEEDER CHAIN - PROTECTIVE PLATES	3-3
TABLE CLUTCH	3-4
HYDRAULIC CYLINDER	3-5
REVERSING DEVICE	3-6
CONCAVE	4-1
CONCAVE SETTING	4-2
THRESHING DRUM	4-3
DRUM COVER AND STONE TRAP	4-4
STRIPPER BEATER	4-5
CHECK FLAPS	4-6
CONCAVE AND CYLINDER - GRAIN SEPARATOR	4-7
STRAW SHAKER AND CRANKS	5-1
FAN HOUSING WITH MANTLE AND ROTARY AIR INTAKE	6-1A
FAN HOUSING WITH GUARDING	6-1B
MAIN FAN BLADE AND BOTTOM AUGER	6-2
MAIN FAN VARIATOR	6-3
CONVEYOR PAN WITH SUSPENSION	6-4
ECCENTRIC DRIVE 1	6-5
ECCENTRIC DRIVE 2	6-6
LOWER SHAKER SHOE WITH SIEVES	6-7
LOWER SHAKER SHOE WITH SUSPENSION	6-8
UPPER SHAKER SHOE WITH SIEVES	6-9
UPPER SHAKER SHOE WITH SUSPENSION	6-10
FILLING ELEVATOR	7-1
FILLER PIPE	7-2
RETURN ELEVATOR	7-3
RETURNS THRESHER	7-4
DISCHARGE AUGER, FIXED PART	9-1
DISCHARGE AUGER, SWIVEL PART	9-2
DISCHARGE AUGER PIPE	9-3
TRANSMISSION, UNLOADING AUGER	9-4
GUARD, GRAIN TANK TOP	9-5
GUARD - GRAIN TANK	9-6
SUCTION CHANNEL AND HYDRAULIC COOLER	10-1
RADIATOR HOSES AND CABLES	10-2
AIR CLEANER	10-3
STRAINER	10-4
ENGINE BRACKET AND SILINCR	10-5
PROP. PUMP - HYDR. PUMP	10-6
POWER TAKE-OFF	10-7
FAN HOUSING	10-8
FUEL TANK	10-9

TABLE OF CONTENT

COUNTER SHAFT	11-1
CYLINDER TRANSMISSION	11-2
BELT MOUNTING	11-3
DRIVING WHEELS AND SIDE PINIONS, RIGHT AND LEFT	12-1
FRONT AXLE WITH GEARBOX AND SHAFTS	12-2
REAR AXLE	12-3
STEERING WHEEL	12-4
WORKING BRAKE	12-5
GEAR BOX 2	12-6
GEAR BOX 3 - PARKING BRAKE	12-7
SIDE PINIONS	12-8
DRIVER CABIN	13-1
CAB ROOF WITH SIDE MEMBERS	13-2
BRAKE PEDALS AND GEARSHIFT	13-3
INSTRUMENT PANEL, CONTROL BOX	13-4
OPERATOR SEAT, STEERING ARRANGEMENT	13-5
WINDOW PANES	13-6
FRONT PANEL, SIDE MEMBERS, DANIAVISION	13-7
CAB ROOF WITH AIR-CONDITION	13-8
PLATFORM	13-9
HYDRAULICS - CYLINDER VARIATOR	14-2
HYDRAULICS - REEL SPEED	14-3
PROPULSION HYDRAULIC	14-4
HYDRAULICS - PUMP AND MAIN VALVE	14-5
HYDRAULICS - TABLE UP/DOWN	14-6
HYDRAULICS - STEERING GEAR	14-7
HYDRAULICS - UNLOADING AUGER	14-8
HYDRAULICS - REEL FORE/AFT.	14-9
HYDRAULICS - REEL UP/DOWN	14-10
HYDRAULICS - CHAF SPREADER	14-11
HYDRAULICS - SIDE KNIFE	14-12
LOWER GUARDING 1	15-1
LOWER GUARDING 2	15-2
STRAW NOSE	15-3
STRAW NOSE - LOWER GUARDING AND WIND GUARDING	15-4
UPPER GUARDING - ENGINE	15-5
TOOLS - PAINT	16-1
WIRING	16-2
ELECTRICAL PARTS	16-3
PLUG	16-4
CABLE EYE - SHORT-CIRCUIT PLUG	16-5
STRAW CHOPPER	17-1
DISTRIBUTOR BOX	17-2A
DISTRIBUTOR BOX	17-2B
COUNTER DRIVE FOR STRAW CHOPPER	17-3
ADJUSTMENT F. STRAW CHOPPER	17-4



KNIVES AND FINGERS - FREEFLOW

Item	Part Number	Qty	Description	Comments
1	D28283934	19	Pliers	(F3)
	D28283934	15	Pliers	(S4)
	D28283934	17	Pliers	(T8)
	D28283934	21	Pliers	(F4)
3	D28280809	1	Guard	
4	D40551600		Bolt	
5	D41010800		Nut Metric	
6	D28260535	1	Finger	
8	D44102900	39	Finger	(F3)
	D44102900	31	Finger	(S4)
	D44102900	35	Finger	(T8)
	D44102900	43	Finger	(F4)
9	D28260531	1	Finger	
12	D28283104	1	Support	
13	D40423700	4	HEXAGON SCREW	
14	D20400414	8	Washer	
15	D41010700	4	Nut Metric	
	D28283009	2	Knife Back	(T8)
				18'
	D28283010	2	Knife Back	(F3)
				20'
	D28283308	2	Knife Back	(S4)
				16'
	D28283865	2	Knife Back	(F4)
19	D28283011	2	Knife Head	
20	D28281490	2	Knife Back	(S4)
				16'
20	D28281491	2	Knife Back	(T8)
				18'
20	D28281492	2	Knife Back	(F3)
				20'
20	D28281493	2	Knife Back	(F4)
				22'
21	D44103700		Section	(5)
22	D44103800	1	Half Section	
23	D41306100		Rivet	(5)
24	D41306200		Rivet	(5)
25	D44104000	1	Half Section	
29	D49040200		Ear Lifter	
30	D49040400		Spring	
31	D40426100		Screw	
32	D49040600		Roller	
33	D40426100		Screw	
34	D40402400	2	Screw Metric	
35	D26500317	2	Spring	
36	D28230841	2	Spring	
37	D28230842	2	Guard	(F4)
	D28230843	1	Guard	(70)
	D28230844	1	Guard	(F3)
	D28230845	1	Guard	(S4)
	D28230842	2	Guard	(T8)
	D28230844	1	Guard	(S4)
	D28230845	1	Guard	(F3)
	D28281067	1	Wobble Drive	POS. 38-85
38	D44127800	1	Box	
39	D44128800	1	Bearing Needle	
41	D46116500	1	Valve	
42	D44129100	1	Nut	
43	D44129200	1	Washer	
44	D41668400	2	Bearing Roller	
45	D44127900	1	Housing	
46	D44128000	2	Journal	
47	D44129300	1	Shaft	
48	D44128200	1	Cover	
49	D41100700	6	Washer	
50	D40404900	6	Screw Metric	
51	D41669700	1	Bearing Needle	
52	D44128900	1	Seal	
53	D45481500	1	O Ring	
54	D44128300	1	Bearing Carrier	

MASSEY FERGUSON

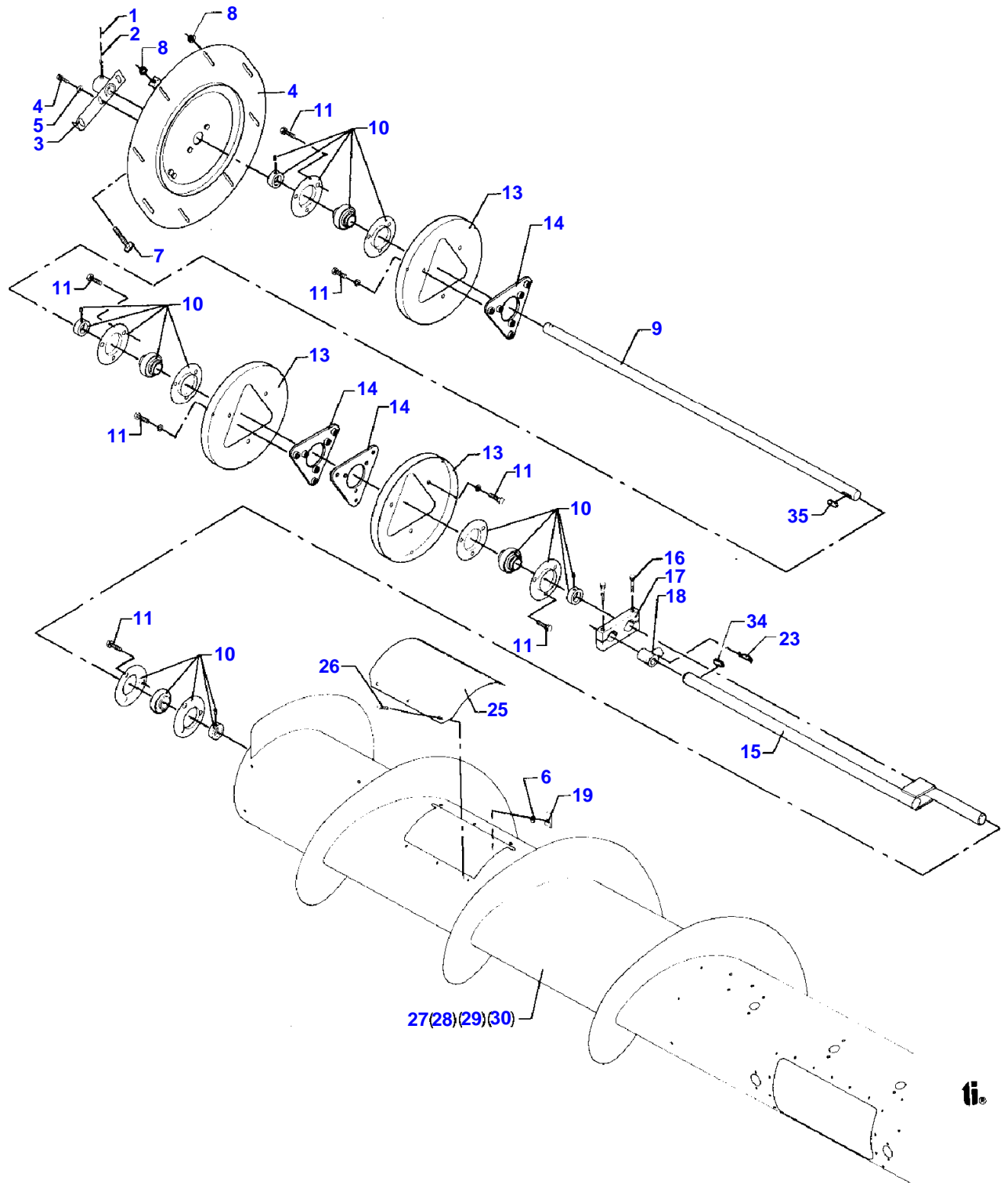
MF 38 COMBINE, -> 47597 - 1810921A

1810921A

KNIVES AND FINGERS - FREEFLOW

1-1

Item	Part Number	Qty	Description	Comments
55	D41100700	2	Washer	
56	D40697200	2	Screw	
57	D40639600	2	Pin	
58	D44128400	2	Bush	
59	D44128500	1	Yoke	
60	D41669800	3	Bearing Needle	
61	D45409500	1	Seal	
62	D44128600	1	Plug	
63	D45236200	1	Plug	
64	D44127100	1	Hub	
65	D41100900	1	Washer	
66	D40694000	1	Screw	
67	D41985600	1	Belt	
69	D20400426	4	Washer	
70	D40410900	4	Screw	
74	D20400523	4	Spacer	
75	D40465400	4	Screw	
79	D40698400	2	Screw	
80	D20400438	2	Washer	
83	D41087700	1	Locknut	
84	D20400428	1	Washer	
85	D40429400	1	HEXAGON SCREW	
86	D41409100	1	SPLIT PIN	
87	D41054300	1	Nut	
88	D44126900	1	Flange	
89	D44127000	1	Swivel Arm	
90	D44127200	1	Pulley	
91	D28280986	4	Dog	
92	D28260362		Clip	(5)
93	D40067200		Screw	
94	D20400419		Washer	
95	D49040300		Ear Lifter	
96	D28283109	1	Support	
				(F3)
				20'
				(F4)
				22'
				(S4)
				16'
				(T8)
				18'
				(5)
				OPTIONAL
				(70)
				20' - 22'



MASSEY FERGUSON

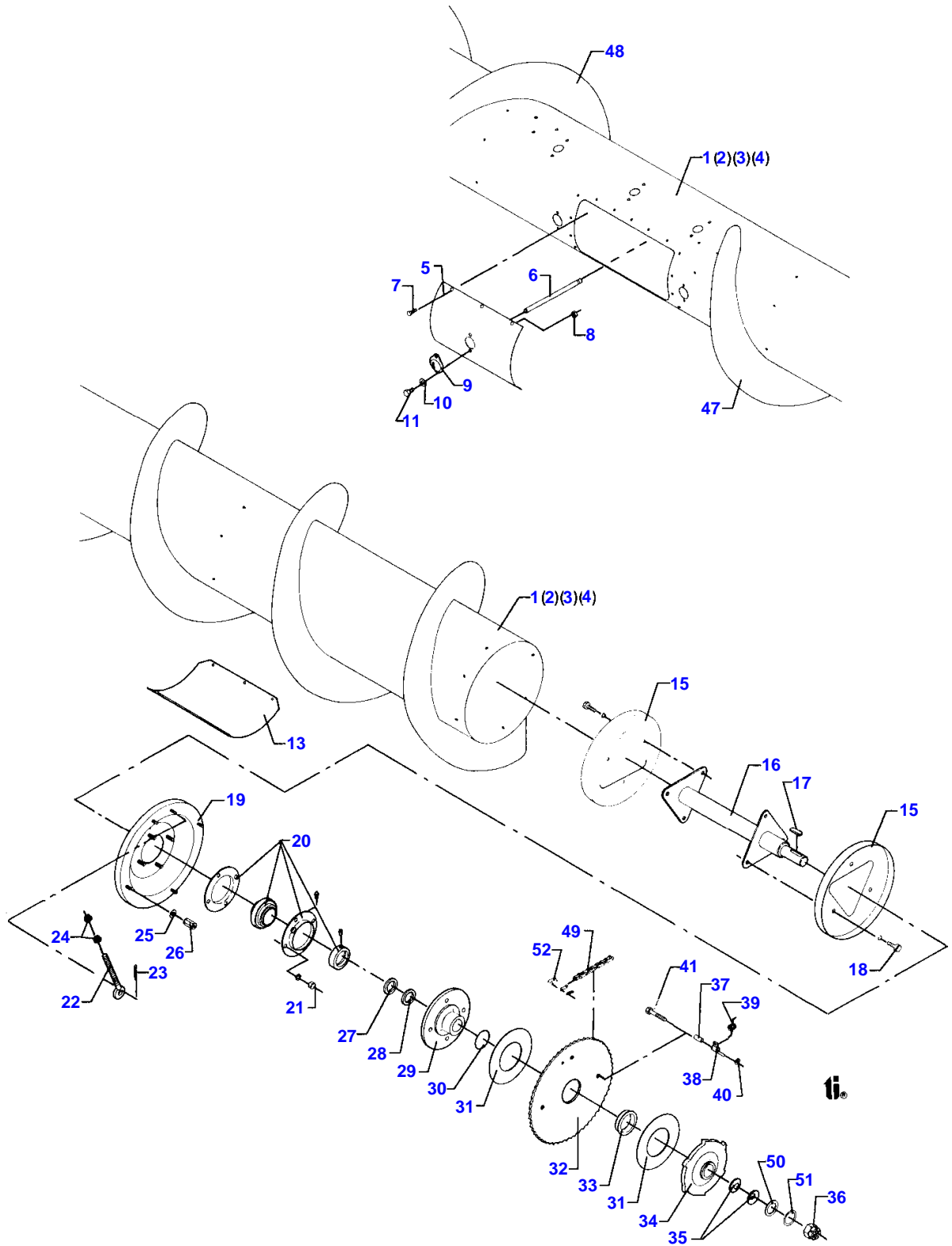
MF 38 COMBINE, -> 47597 - 1810921A

1810921A

FEEDER DRUM 1 - FREEFLOW

1-2

Item	Part Number	Qty	Description	Comments
1	D40404700	1	Screw Metric	
2	D20400506	1	Spacer	
4	D28280040	1	Plate	
5	D28283029	1	Adjuster	
6	D20400470	12	Washer	
7	D28211023	1	Bolt	
8	D41013600	2	Nut	
	D28283073	1	Crank	(F3) 20' CPL
	D28283075	1	Crankshaft	(T8) 18' CPL
	D28283785	1	Crankshaft	(S4) 16' CPL
	D28283874	1	Crankshaft	(F4)
9	D28283036	1	Crankshaft	(T8) 18'
9	D28283037	1	Crank	(F3) 20'
9	D28283768	1	Crankshaft	(S4) 16'
9	D28283871	1	Crankshaft	(F4)
10	D41707800	4	Flange	
11	D40407900	24	Screw Metric	
13	D28280014	4	Plate	
14	D28283847	4	Bearing Plate	
15	D28283016	1	Crankshaft	
16	D40426100	2	Screw	
17	D28283039	1	Arm	
18	D28251831	15	Bearing	
19	D43428200	12	Nut	
23	D28283853	15	Hair Pin	
25	D28283070	1	Cover	
26	D40402600	12	Screw Metric	
27	D28283125	1	Drum	(F3)
	D28283134	1	Drum	(T8) 18'
27	D28283790	1	Drum	(S4) 16'
27	D28283870	1	Drum	(F4)
28	D28283012	1	Shell	
29	D28283031	1	Shell	(F3) Left Hand
29	D28283033	1	Shell	(T8) Left Hand
29	D28283794	1	Shell	(S4) Left Hand
29	D28283875	1	Shell	(F4) Left Hand
30	D28283032	1	Shell	(T8) Right Hand
30	D28283034	1	Shell	(F3) Right Hand
30	D28283795	1	Shell	(S4) Right Hand
30	D28283876	1	Shell	(F4) Right Hand
32	D42616400	1	Pin	
33	D42625300	1	Pin	
34	D43104700	1	Key	
35	D43104700	1	Key	(F3) 20' (F4) 22' (S4) 16' (T8) 18'



MASSEY FERGUSON

MF 38 COMBINE, -> 47597 - 1810921A

1810921A

1-3

FEEDER AUGER 2 - FREEFLOW

Item	Part Number	Qty	Description	Comments
1	D28283125	1	Drum	(F3)
	D28283134	1	Drum	(T8)
				18'
1	D28283790	1	Drum	(S4)
				16'
1	D28283870	1	Drum	(F4)
2	D28283012	1	Shell	
3	D28283031	1	Shell	(F3)
				Left Hand
3	D28283033	1	Shell	(T8)
				Left Hand
3	D28283794	1	Shell	(S4)
				Left Hand
3	D28283875	1	Shell	(F4)
				Left Hand
4	D28283032	1	Shell	(T8)
				Right Hand
4	D28283034	1	Shell	(F3)
				Right Hand
4	D28283795	1	Shell	(S4)
				Right Hand
4	D28283876	1	Shell	(F4)
				Right Hand
5	D28283078	1	Cover	
6	D28283815	15	Spike	
7	D40402200		Screw Metric	
8	D41087400		Locknut	
9	D28283060	15	Bush	
10	D20400404		Washer	
11	D40402600		Screw Metric	
13	D28283070	1	Cover	
14	D40402600		Screw Metric	
15	D28280014	4	Plate	
16	D28283007	1	Drive Shaft	
17	D43106800	1	Key	
18	D40407900		Screw Metric	
19	D28283053	1	Plate	Left Hand
20	D41716500	1	Bearing	
21	D41010900	4	Nut Metric	
22	D28281387	1	Screw	
23	D41408900	1	Pin	
24	D41013600	2	Nut	
25	D20400416	4	Washer	
26	D28280729	4	Nut	
27	D28280956	2	Ring	
28	D28281029	2	Spacer	
29	D28283004	1	Washer	
30	D45481600	1	Ring	
31	D45904300	2	Facing	
32	D28283008	1	Sprocket	
33	D28283000	1	Insert	
34	D28283003	1	Washer	
35	D41112400	10	Washer	
36	D41054100	1	Castle Nut	
37	D28281431	1	Spacer	
38	D28281432	1	Carrier	
39	D28283006	1	Spring	
40	D20400507	1	Spacer	
41	D40426100	1	Screw	
47	D28280006	1	Spiral	(F3)
	D28280053	1	Spiral	(T8)
	D28280054	1	Spiral	(S4)
	D28280068	1	Spiral	(F4)
48	D28280005	1	Spiral	(F3)
	D28280051	1	Spiral	(T8)
	D28280052	1	Spiral	(S4)
	D28280067	1	Spiral	(F4)
49	D42329300	1	Chain	115
50	D20400520	4	Spacer	
51	D20400523	1	Spacer	

MASSEY FERGUSON

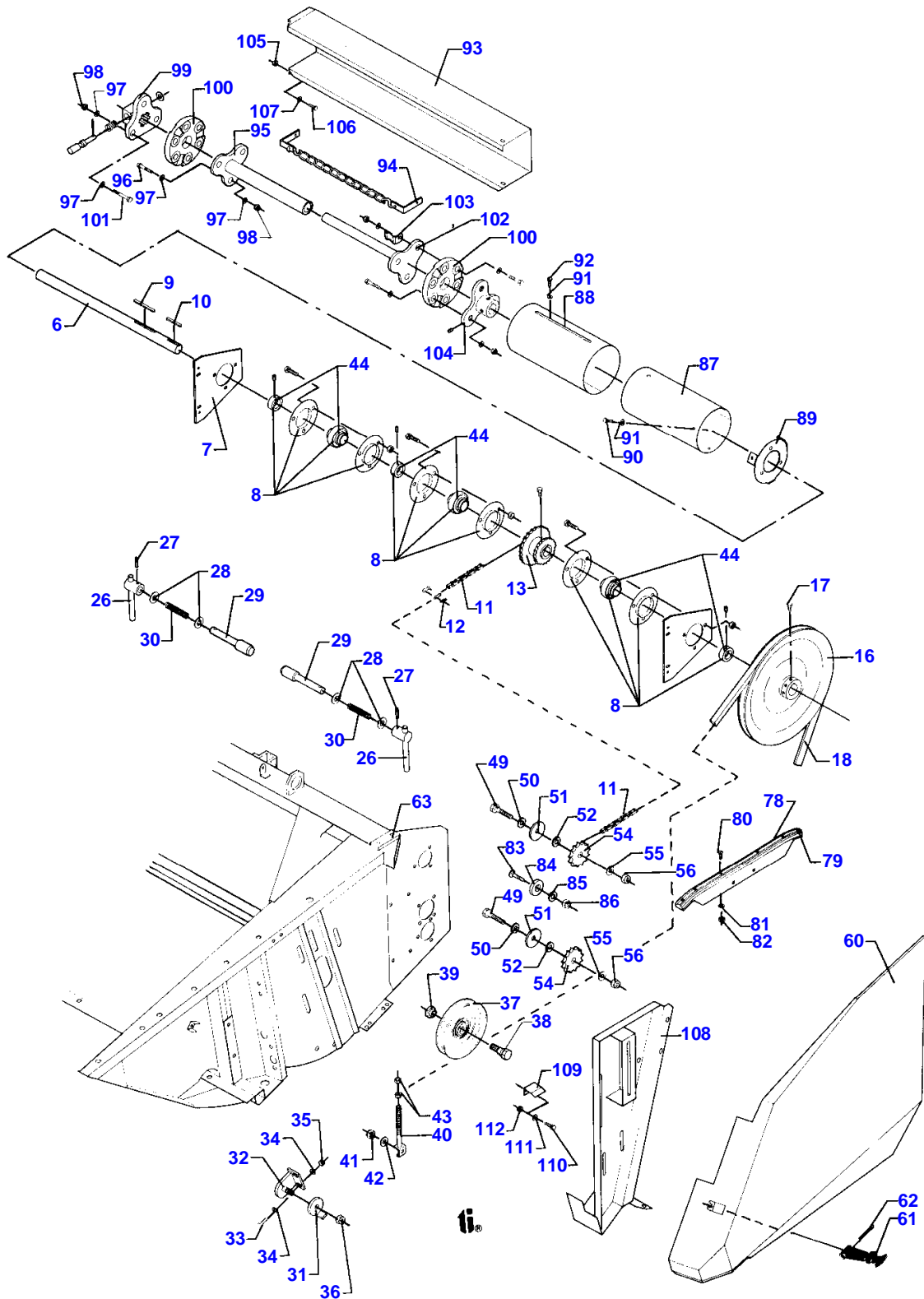
MF 38 COMBINE, ->| 47597 - 1810921A

1810921A

FEEDER AUGER 2 - FREEFLOW

1-3

Item	Part Number	Qty	Description	Comments
				(F3)
				20'
				(F4)
				22'
				(S4)
				16'
				(T8)
				18'



MASSEY FERGUSON

MF 38 COMBINE, -> 47597 - 1810921A

1810921A

GUARDING AND REDUCING EQUIPMENT - FREEFLO

1-4

Item	Part Number	Qty	Description	Comments
1	D28283160	1	Guard	
2	D28281468	1	Cover	
3	D28280958	1	Cover	
4	D43427500	4	Pin	
5	D42555500	4	Circlip	
6	D28280270	1	Countershaft	(F4) 22'
6	D28283409	1	Shaft	(F3)
	D28283485	1	Shaft	(S4) 16'
6	D28283486	1	Shaft	(T8) 18'
7	D28283099	2	Support	
8	D41707800	3	Flange	
9	D43114900	1	Key	
10	D43105000	1	Key	
11	D42329600	1	Chain	
12	D42365100	1	Link	
13	D28280225	1	Sprocket	
14	D40466200	3	Setscrew	
16	D28280281	1	Pulley	
17	D40466700	3	Screw Metric	
18	D41985600	1	Belt	
26	D28283281	1	Arm	
27	D42612200	2	Pin	
28	D20400523	4	Spacer	
29	D28283200	2	Shaft	
30	D27100794	2	Spring	
31	D28251593	2	Lock Washer	
32	D28251594	2	Bracket	
33	D40407700	4	Screw	
34	D20400507	8	Spacer	
35	D41087600	4	Locknut	
36	D41087900	2	Locknut	
37	D28760159	1	Pulley	
38	D28760156	1	Screw	
39	D28760155	1	Bush	
40	D28260181	1	Bolt	
41	D41087900	1	Locknut	
42	D20400416	1	Washer	
43	D41010800	2	Nut Metric	
44	D41663500	3	Bearing Ball	
49	D40433600	2	HEXAGON SCREW	
50	D20400463	2	Washer	
51	D20400460	6	Washer	
52	D20400518	5	Spacer	
54	D41716800	2	Tightener	
55	D20400516	4	Spacer	
56	D41087900	2	Locknut	
60	D28283156	1	Cowl	
61	D44737100	1	Rubber Strap	
62	D41410900	1	SPLIT PIN	
63	D28283689	1	Housing	(S4)
	D28283690	1	Housing	(T8)
	S28283691	1	Housing	(F3)
	D28283858	1	Housing	(F4)
78	D28280787	1	Rail	
79	D28281365	1	Crossmember	
80	D40609300	6	Screw	
81	D20400453	6	Washer	
82	D41087200	6	Locknut	
83	D40073100	1	Screw	
84	D28280981	1	Spacer	
85	D20400459	1	Washer	
86	D41087900	1	Locknut	
87	D28282105	1	Guard	
88	D28282110	1	Guard	
89	D28280834	1	Ring	
90	D40404700	3	Screw Metric	
91	D20400506	4	Spacer	

MASSEY FERGUSON

MF 38 COMBINE, ->| 47597 - 1810921A

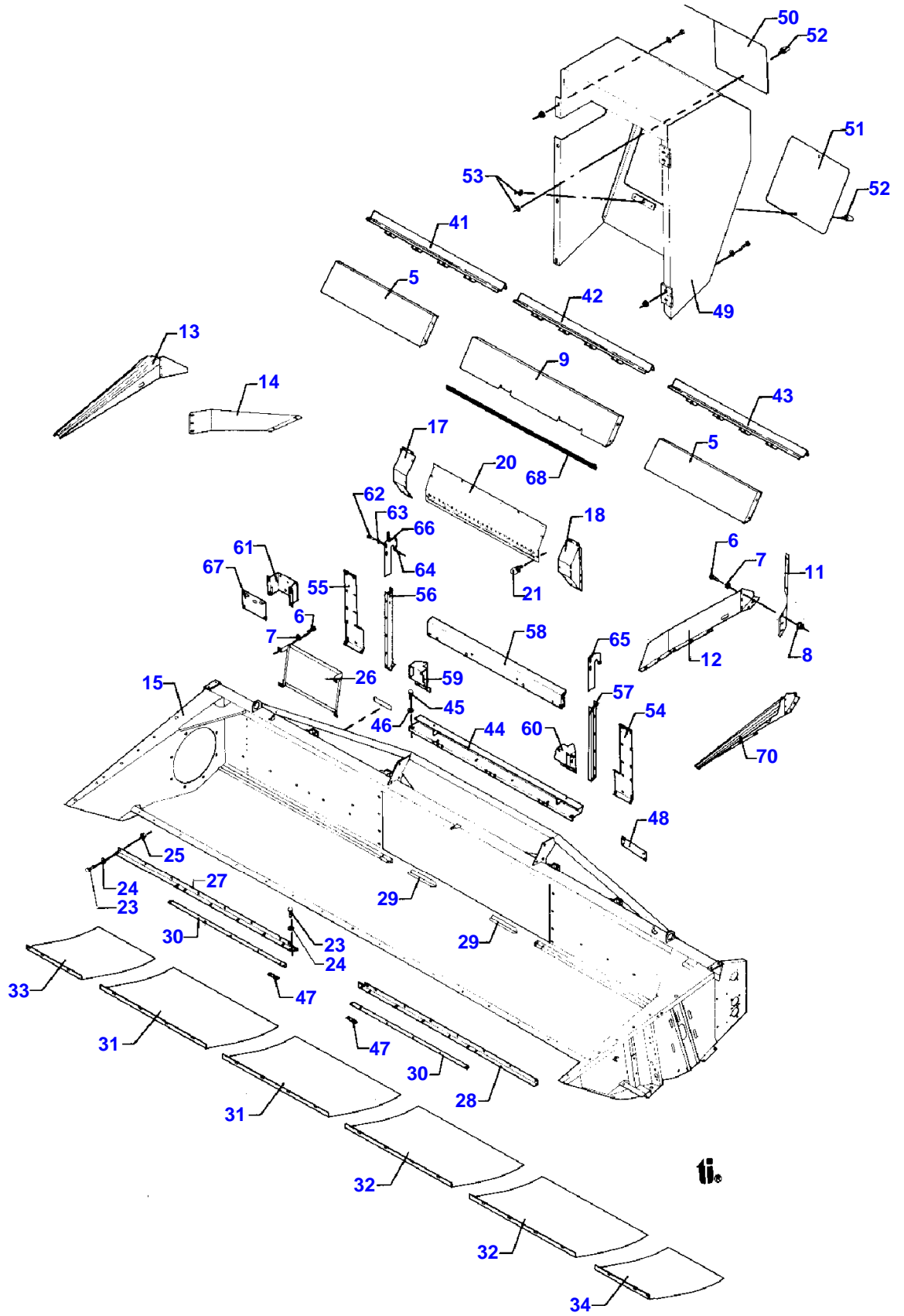
1810921A

GUARDING AND REDUCING EQUIPMENT - FREEFLO

1-4

Item	Part Number	Qty	Description	Comments
92	D43385200	1	Screw	
93	D28283415	1	Guard	(S4)
93	D28283416	1	Guard	(T8)
93	D28283417	1	Guard	(F3)
93	D28283864	1	Guard	(F4)
94	D28280726	1	Chain	
95	D44127500	1	Tube	
96	D40408300	6	Screw Metric	
97	D20400471	18	Washer	
98	D41087600	9	Locknut	
99	D44127300	1	Clutch	
100	D44127400	2	Vibration Mount	
101	D40408500	3	Screw	
102	D44127600	1	Shaft	
103	D44129000	1	Spring	
104	D28280301	1	Flange	
105	D41010800	1	Nut Metric	
106	D40402400	2	Screw Metric	
107	D20400404		Washer	
108	D28283090	1	Plate	
109	D28283098	1	Fitting	
110	D40404900	2	Screw Metric	
111	D20400506	2	Spacer	
112	D41013500	2	Nut	

(F3)
20'
(F4)
22'
(S4)
16'
(T8)
18'



Buy Now



Our support email:

ebooklibonline@outlook.com