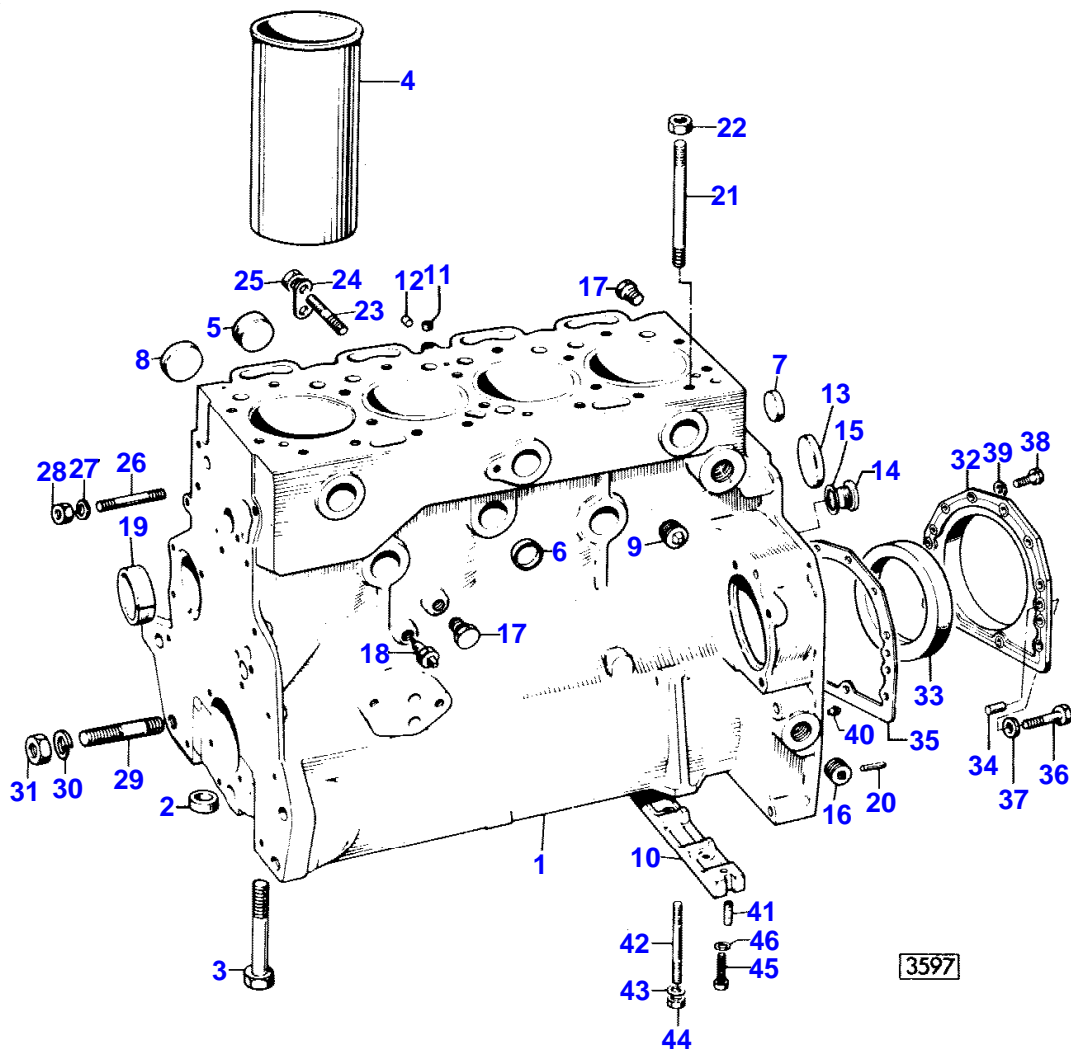


| Page Title | Page Number |
|--|-------------|
| CYLINDER BLOCK | 2 |
| CRANKSHAFT & FLYWHEEL | 6 |
| CYLINDER HEAD AND COVER | 10 |
| ROCKER ARM | 14 |
| TIMING GEAR | 18 |
| LUBRICATING OIL SYSTEM | 22 |
| WATER PUMP | 26 |
| FUEL INJECTION PUMP | 30 |
| LIFT PUMP | 34 |
| FUEL PIPINGS AND FUEL FILTER | 36 |
| KIT GASKET | 38 |
| ELECTRICAL EQUIPMENT | 40 |
| COOLING SYSTEM | 46 |
| FUEL TANK | 48 |
| AUXILIARY FUEL TANK | 50 |
| INDUCTION MANIFOLD | 52 |
| AIR FILTER | 54 |
| EXHAUST MANIFOLD AND MUFFLER | 56 |
| THROTTLE CONTROLS | 58 |
| ENGINE INSTALLATION - A4.248 | 59A |
| DUAL CLUTCH - LUK TYPE | 60 |
| DUAL CLUTCH - O.M.G. | 62 |
| DOUBLE CLUTCH CONTROL | 64 |
| CLUTCH SHAFT BRAKING SYSTEM | 70 |
| TRANSMISSION HOUSING - CENTRE AXLE HOUSING | 72 |
| SYNCHRO-MESH TRANSMISSION | 76 |
| CONTROLS AND TRANSMISSION SHIFT LEVERS | 80 |
| CENTER GEAR UNIT | 82 |
| POWER TAKE OFF | 84 |
| POWER TAKE OFF - 540/1000 RPM | 88 |
| BELT PULLEY | 92 |
| REAR AXLE HOUSING | 96 |
| STEERING CLUTCH | 100 |
| BRAKES | 104 |
| FRONT SUSPENSION - REAR SUSPENSION | 108 |
| TRACK CARRIER | 112 |
| TRACK ROLLER | 114 |
| UPPER ROLLER | 116 |
| IDLER | 118 |
| TRACK CHAIN | 122 |
| HYDRAULIC LIFT PUMP AND LINES | 124 |
| OIL PUMP - HYDRAULIC LIFT | 128 |
| HYDRAULIC CONTROL VALVE | 130 |
| HYDRAULIC LIFT | 134 |
| DRAFT AND POSITION CONTROLS | 140 |
| AUXILIARY HYDRUALICS EQUIPMENT - 2 VALVE ELEMENT | 146 |
| OIL PUMP | 152 |
| AUXILIARY HYDRAULICS VALVE - 2 VALVE ELEMENT | 154 |
| OIL FILTER | 155A |
| LINKAGE - CAT.II | 156 |
| SWINGING DRAWBAR | 160 |
| MOUNTING FRAME AND FRONT WEIGHTS | 162 |
| HOOD | 164 |
| SEAT - FENDERS - PLATFORM | 168 |
| TRACK GEAR GUARDS | 172 |
| TRACK GEAR GUARDS | 173A |
| INSTRUMENTS | 174 |
| DECALS | 176 |
| LIGHTING EQUIPMENT | 178 |
| TOOL GROUP | 184 |

2

CYLINDER BLOCK
 BLOC MOTEUR
 KURBELGEHAEUSE
 BLOCCO CILINDRI
 BLOQUE DE CILINDROS

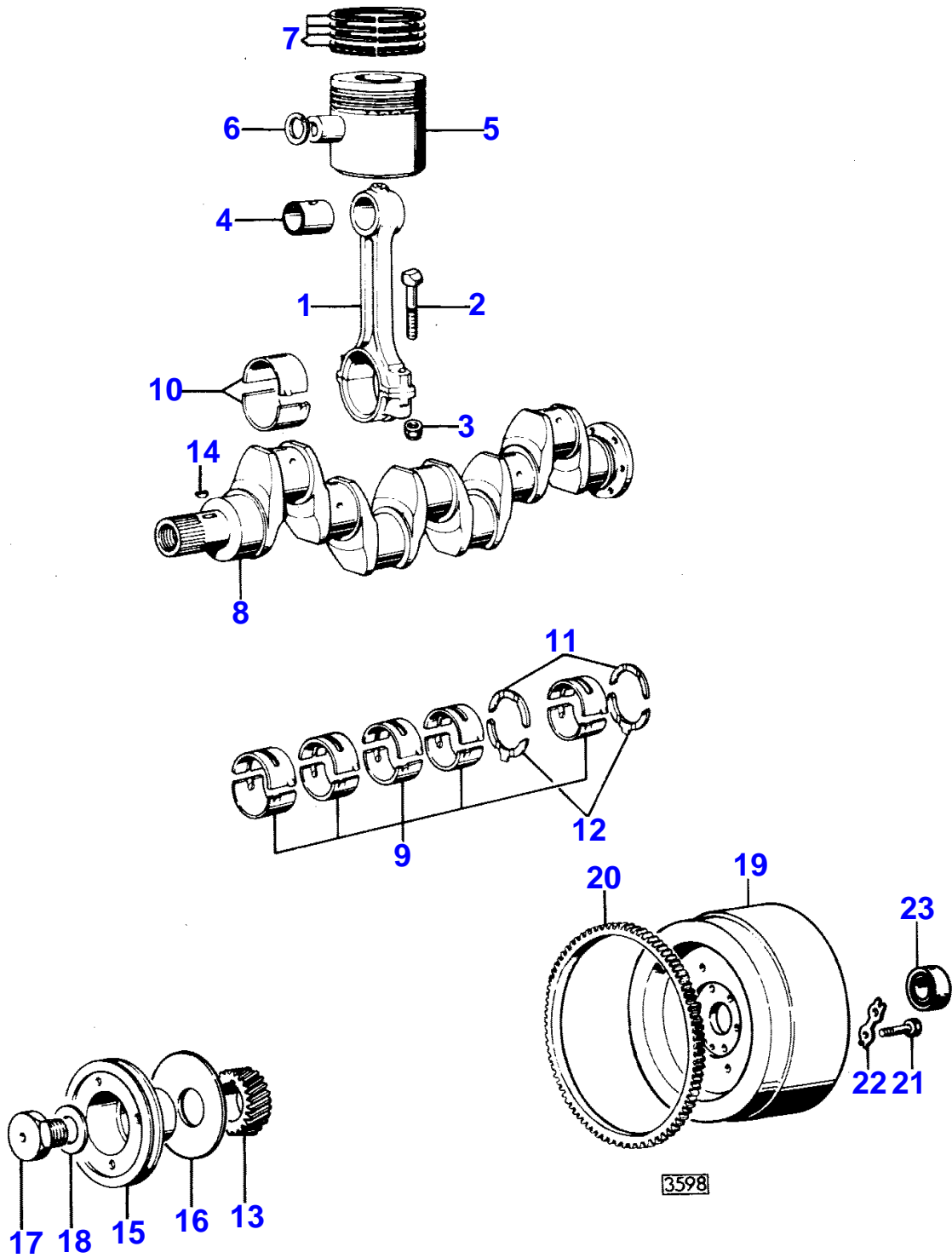


CYLINDER BLOCK

| Item | Part Number | Qty | Description | Comments |
|------|-------------|-----|--------------|----------|
| 1 | 61677 | 1 | Block | |
| 2 | 33142111 | 10 | Thimble | 1 |
| 3 | 32166329 | 10 | Bolt | 1 |
| 4 | 31358346 | 4 | Liner | 1 |
| 5 | 0650618 | 4 | Plug | 1 |
| 6 | 0650563 | 6 | Plug | 1 |
| 7 | 0650563 | 2 | Plug | 1 |
| 8 | 0650577 | 4 | Plug | |
| 9 | 0650588 | 2 | Plug | |
| 10 | 36277831 | 1 | Bridge Piece | |
| 11 | 32417134 | 1 | Plug | |
| 12 | 32114461 | 1 | Plug | |
| 13 | 32416105 | 1 | Plug | |
| 14 | 0650582 | 1 | Plug | |
| 15 | 0920130 | 1 | Washer | |
| 16 | 0560588 | 1 | Plug | |
| 17 | 32161114 | 2 | Plug | |
| 18 | 1423895M91 | 1 | Switch | |
| 19 | 31134132 | 1 | Bush | |
| 20 | 0350018 | 2 | Dowel | |
| 21 | 32526312 | 2 | Stud | |
| 22 | 33221316 | 2 | Nut | |
| 23 | 0826222 | 4 | Stud | |
| 24 | 36241316 | 2 | Plate | |
| 25 | 33221115 | 4 | Nut | |
| 26 | 0826469 | 1 | Stud | |
| 27 | 0920054 | 1 | Washer | |
| 28 | 0576051 | 1 | Nut | |
| 29 | 974496M1 | 2 | Bolt | |
| 30 | 391414X1 | 2 | Washer | |
| 31 | 393643X1 | 2 | Nut Metric | |
| 32 | 37513851 | 1 | Housing | |
| 33 | 2415391 | 1 | Seal | |
| 34 | 0350009 | 2 | Dowel | |
| 35 | 36817157 | 1 | Joint | |
| 36 | 2172530 | 2 | Capscrew | |
| 37 | 33112111 | 2 | Washer | |
| 38 | 0746211 | 10 | Bolt | |
| 39 | 0920003 | 10 | Washer | |
| 40 | 32452113 | 1 | Pointer | |
| 41 | 32811408 | 2 | Joint | |
| 42 | 32517128 | 2 | Stud | |
| 43 | 0920053 | 2 | Washer | |
| 44 | 0576002 | 2 | Nut | |
| 45 | 2176369 | 2 | Screw | |
| 46 | 0920521 | 2 | Washer | |

6

CRANKSHAFT & FLYWHEEL
 VILEBREQUIN ET VOLANT
 KURBELWELLE UND SCHWUNGRAD
 ALBERO MOTORE E VOLANO
 CINGUENAL Y VOLANTE



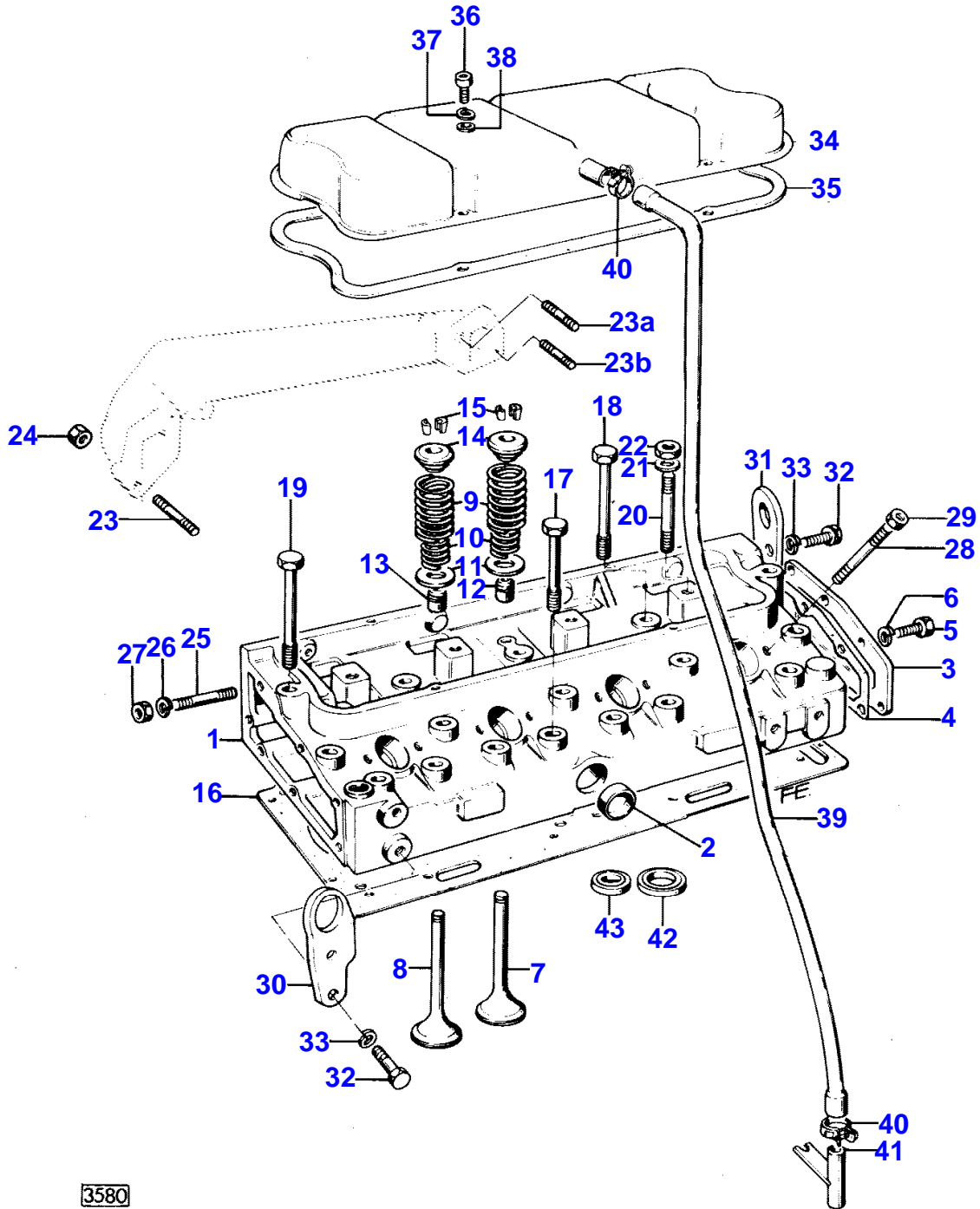
CRANKSHAFT & FLYWHEEL

| Item | Part Number | Qty | Description | Comments |
|------|-------------|-----|-----------------|---------------------------------|
| 1 | 84920 | 4 | Conrod | |
| 2 | 32762116 | 8 | Bolt | |
| 3 | 33221321 | 8 | Nut | |
| 4 | 31134123 | 4 | Bush | |
| 5 | 89207 | 4 | Kit, Piston | |
| 6 | 0170002 | 8 | Circlip | |
| | | | | 5 |
| 7 | 86778 | 4 | Kit, Ring | |
| 8 | 94435 | 1 | Kit, Crankshaft | |
| 9 | 82558 | 1 | Bearing | 8 |
| | 81558A | X | Kit, Bearing | (A) Thickness -0,254 MM |
| 9 | 81558B | X | Kit, Bearing | (A) Thickness -0,508 MM |
| 9 | 81558C | X | Kit, Bearing | (A) Thickness -0,762 MM |
| 10 | 85042 | 1 | Kit, Bearing | 8 |
| | | | | (A) |
| 10 | 85042A | X | Kit, Bearing | (A) Thickness -0,254 MM |
| 10 | 85042B | X | Kit, Bearing | (A) Thickness -0,508 MM |
| 10 | 85042C | X | Kit, Bearing | (A) Thickness -0,762 MM |
| 11 | 31137311 | 2 | Washer | 8 |
| | 31137312 | X | Thrust Washer | Thickness +0,178 MM |
| 12 | 31137321 | 2 | Washer | 8 |
| | 31137322 | X | Thrust Washer | Thickness +0,178 MM |
| 13 | 31171681 | 1 | Gear | |
| 14 | 0500012 | 1 | Woodruff Key | |
| 15 | 31148792 | 1 | Pulley | |
| 16 | 33125416 | 1 | Washer | |
| 17 | 32162319 | 1 | Screw | |
| 18 | 33125124 | 1 | Washer | |
| 19 | 1825511M1 | 1 | Flywheel | |
| 20 | 0410236 | 1 | Starter Ring | |
| 21 | 973013M1 | 6 | Bolt | |
| 22 | 0921062 | 3 | Tab Washer | |
| 23 | 339599X1 | 1 | Bearing Ball | |
| | | | | (A) BEARINGS ARE PREFINISHED |

10

CYLINDER HEAD AND COVER

CULASSE ET COUVERCLE
 ZYLINDERKOPF UND DECKEL
 TESTA CILINDRI E COPERCHIO
 CULATA Y TAPA



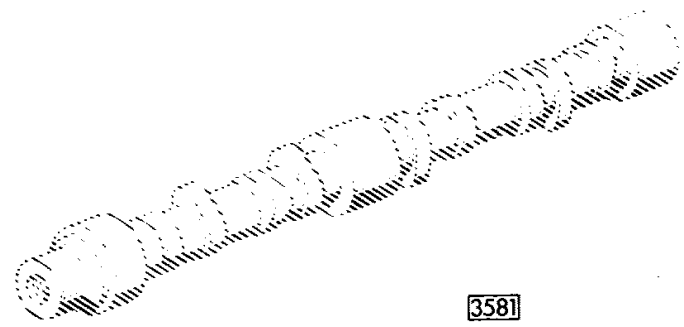
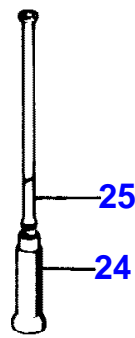
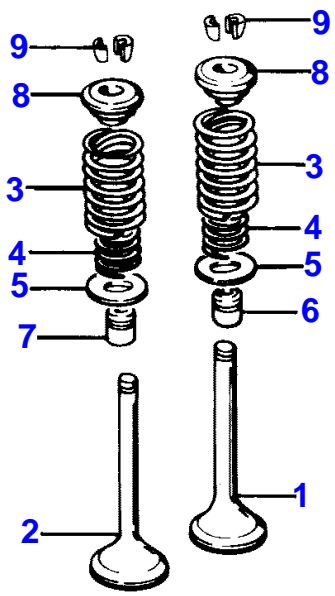
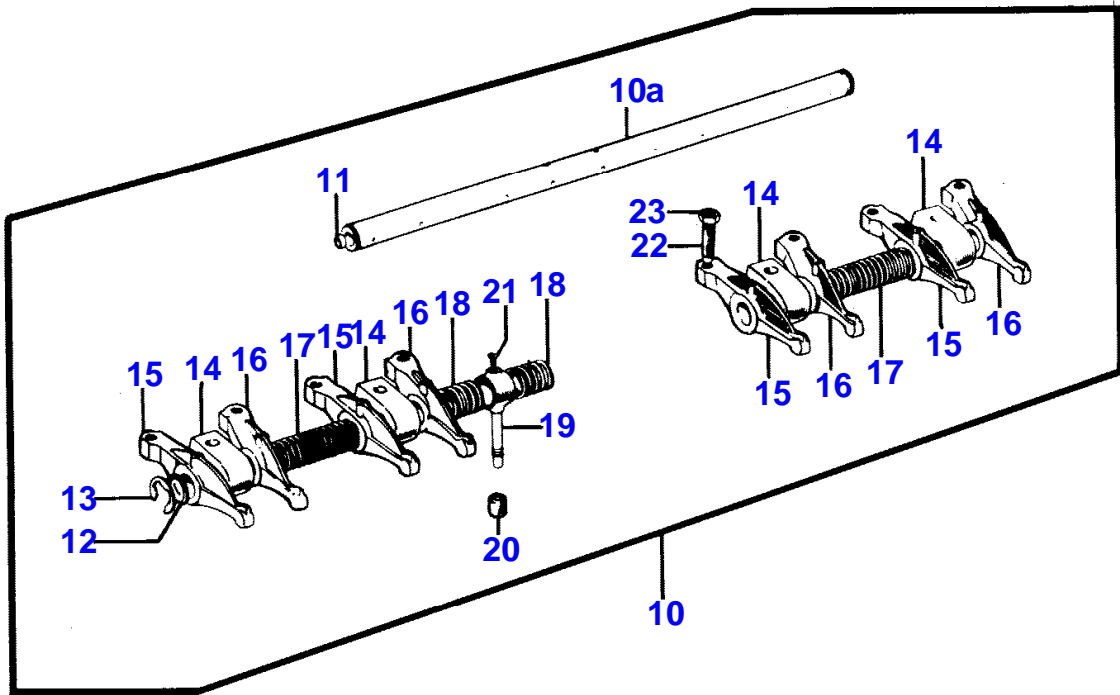
CYLINDER HEAD AND COVER

| Item | Part Number | Qty | Description | Comments |
|------|-------------|-----|----------------|---------------------|
| 1 | 68115 | 1 | Cylinder Head | |
| 2 | 0650563 | 1 | Plug | |
| 3 | 37553121 | 1 | Cover | 1 |
| 4 | 36851409 | 1 | Joint | 1 |
| 5 | 0746254 | 6 | Setscrew | 1 |
| 6 | 0920053 | 6 | Washer | 1 |
| 7 | 31431641 | 4 | Valve Inlet | 1 |
| | 31431401 | X | Valve Inlet | Thickness +0,076 MM |
| | 31431402 | X | Valve Inlet | Thickness +0,38 MM |
| | 31431403 | X | Valve Inlet | Thickness +0,76 MM |
| 8 | 31431881 | 4 | Valve Exhaust | 1 |
| | 31431411 | X | Valve Exhaust | Thickness +0,076 MM |
| | 31431412 | X | Valve Exhaust | Thickness +0,38 MM |
| | 31431413 | X | Valve Exhaust | Thickness +0,76 MM |
| 9 | 31744121 | 8 | Spring | |
| 10 | 31744131 | 8 | Spring | |
| 11 | 33123117 | 8 | Washer | |
| 12 | 33817125 | 4 | Seal | |
| 13 | 33817117 | 4 | Seal | |
| 14 | 33423122 | 8 | Cap | |
| 15 | 33173108 | 8 | Cotter | (A) |
| 16 | 36512338 | 1 | Bracket | |
| 17 | 32181424 | 6 | Screw | |
| 18 | 32181425 | 12 | Screw | |
| 19 | 32181426 | 2 | Screw | |
| 20 | 0826628 | 4 | Stud | |
| 21 | 0920006 | 1 | Washer | |
| 22 | 2211284 | 4 | Nut | |
| 23 | 0826410 | 2 | Stud | |
| 23A | 0826490 | 1 | Stud | |
| 23B | 0826510 | 1 | Stud | |
| 24 | 2188135 | 4 | Nut | |
| 25 | 0826467 | 1 | Stud | |
| 26 | 0920054 | 1 | Washer | |
| 27 | 0576051 | 1 | Nut | |
| 28 | 0826280 | 8 | Stud | |
| 29 | 0576002 | 8 | Nut | |
| 30 | 36475706 | 1 | Plate | |
| 31 | 36177111 | 1 | Plate | |
| 32 | 0746453 | 4 | Setscrew | |
| 33 | 0920054 | 4 | Washer | |
| 34 | 37188549 | 1 | Cyl.Head Cover | |
| 35 | 36811122 | 1 | Joint | |
| 36 | 2172513 | 4 | Screw | |
| 37 | 0920052 | 4 | Washer | |
| 38 | 0920002 | 4 | Washer | |
| 39 | 33872516 | 1 | Pipe | |
| 40 | 2481802 | 2 | Clip | |
| 41 | 35731144 | 1 | Connection | |
| 42 | 33125121 | 4 | Insert | |
| 43 | 33152129 | 4 | Adaptor | |

(A)
SERVICED IN PAIR

14

ROCKER ARM
 ARBRE_CULBUTEURS
 ZIPPHEBELWELLE
 ASSE E BILANCIERI
 EJE DE BALANCINES



3581

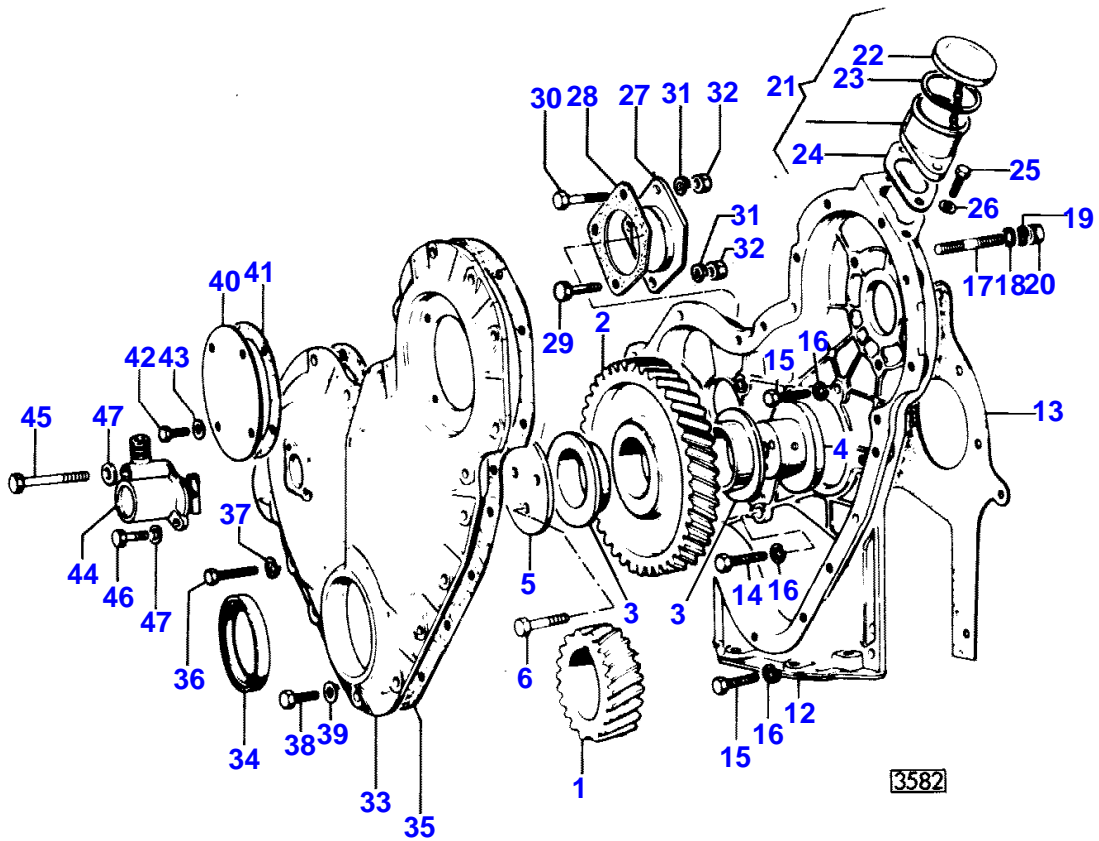
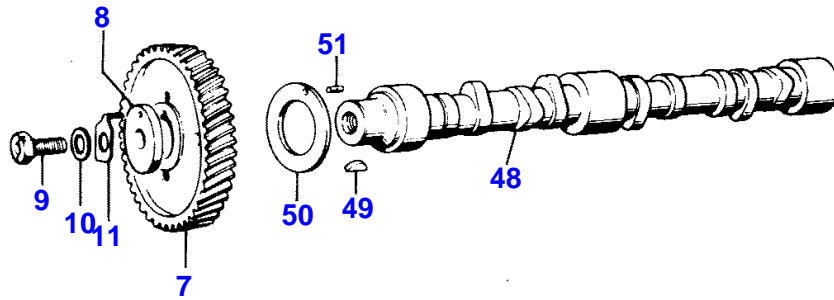
ROCKER ARM

| Item | Part Number | Qty | Description | Comments |
|------|-------------|-----|---------------|---------------------|
| 1 | 31431641 | 4 | Valve Inlet | |
| | 31431401 | X | Valve Inlet | Thickness +0,076 MM |
| | 31431402 | X | Valve Inlet | Thickness +0,38 MM |
| | 31431403 | X | Valve Inlet | Thickness +0,76 MM |
| 2 | 31431881 | 4 | Valve Exhaust | |
| | 31431411 | X | Valve Exhaust | Thickness +0,076 MM |
| | 31431412 | X | Valve Exhaust | Thickness +0,38 MM |
| | 31431413 | X | Valve Exhaust | Thickness +0,76 MM |
| 3 | 31744121 | X | Spring | |
| 4 | 31744131 | 8 | Spring | |
| 5 | 33123117 | 8 | Washer | |
| 6 | 33817125 | 4 | Seal | |
| 7 | 33817117 | 4 | Seal | |
| 8 | 33423122 | 8 | Cap | |
| 9 | 33173108 | 8 | Cotter | (A) |
| 10 | 87618 | 1 | Rockerarm | |
| 10A | 83450 | 1 | Shaft | 10 |
| 11 | 0650507 | 2 | Plug | 10A |
| 12 | 33117415 | 2 | Washer | 10 |
| 13 | 0170151 | 2 | Circlip | 10 |
| 14 | 37521331 | 4 | Bracket | 10 |
| 15 | 37371271 | 4 | Lever | 10 |
| 16 | 37371281 | 4 | Lever | 10 |
| 17 | 31744123 | 2 | Spring | 10 |
| 18 | 31743108 | 2 | Spring | 10 |
| 19 | 35511111 | 1 | Pipe | 10 |
| 20 | 33811113 | 1 | Olive | 10 |
| 21 | 0726504 | 1 | Setscrew | 10 |
| 22 | 0720579 | 8 | Screw | 10 |
| 23 | 0576052 | 8 | Nut | 10 |
| 24 | 31434163 | 8 | Tappet | |
| 25 | 31434307 | 8 | Pushrod | |

(A)
SERVICED IN PAIRS

18

TIMING GEAR
 DISTRIBUTION
 STEUERUNG
 DI DISTRIBUZIONE
 DISTRIBUCION



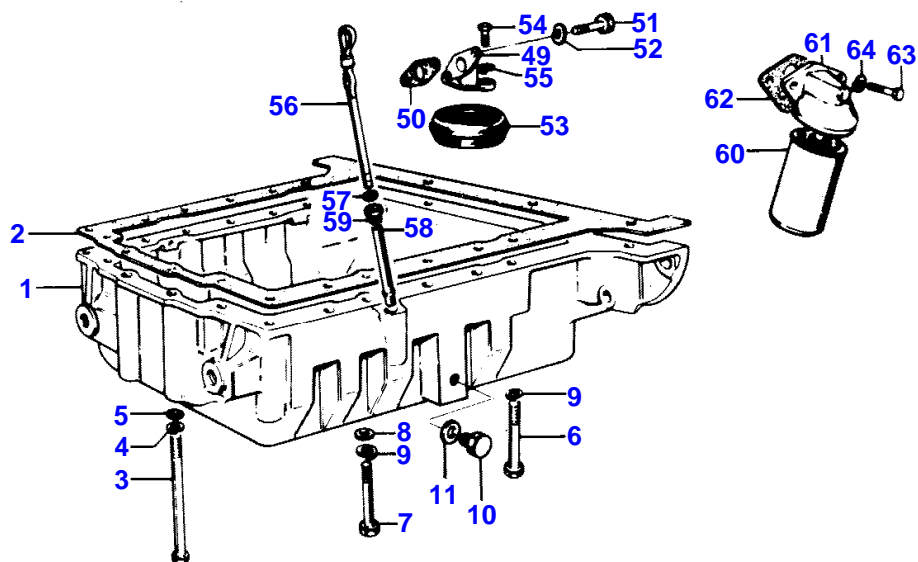
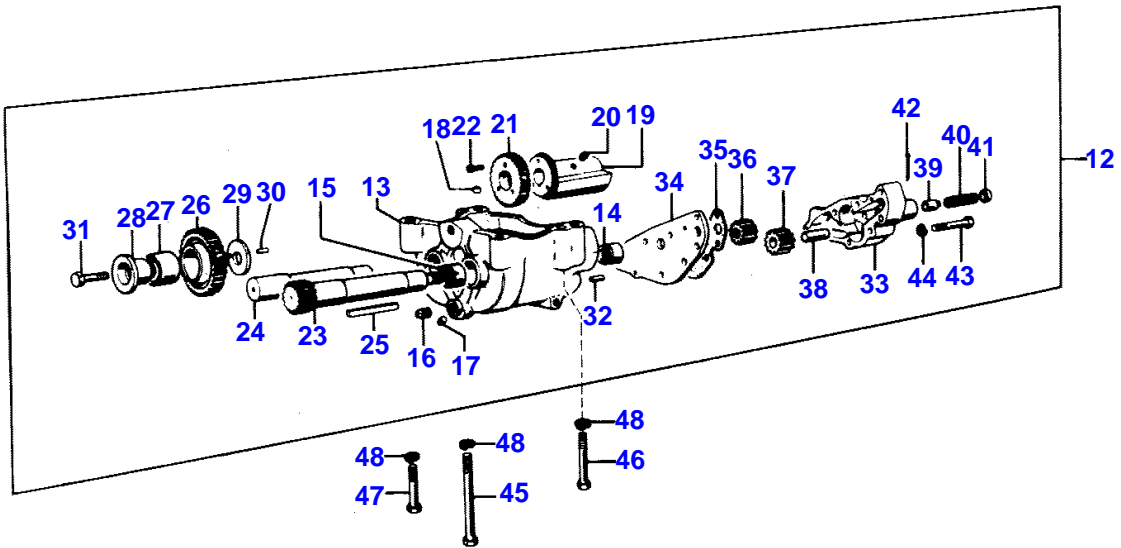
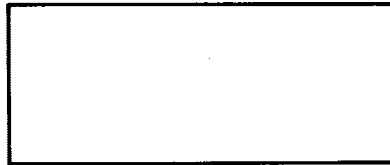
TIMING GEAR

| Item | Part Number | Qty | Description | Comments |
|------|-------------|-----|--------------|----------|
| 1 | 31171681 | 1 | Gear | |
| 2 | 41115023 | 1 | Idler | |
| 3 | 0050345 | 2 | Bush | 2 |
| 4 | 33426161 | 1 | Hub | |
| 5 | 0941082 | 1 | Plate | |
| 6 | 0096439 | 3 | Bolt | |
| 7 | 31171353 | 1 | Gear | |
| 8 | 33153128 | 1 | Washer | |
| 9 | 32161209 | 1 | Screw | |
| 10 | 33115408 | 1 | Washer | |
| 11 | 31733121 | 1 | Washer | |
| 12 | 37161642 | 1 | Housing | |
| 13 | 36814127 | 1 | Joint | |
| 14 | 0746211 | 1 | Bolt | |
| 15 | 0746255 | 8 | Setscrew | |
| 16 | 0920053 | 9 | Washer | |
| 17 | 0826277 | 3 | Stud | |
| 18 | 0920003 | 3 | Washer | |
| 19 | 0920053 | 3 | Washer | |
| 20 | 0576002 | 3 | Nut | |
| 21 | 35784111 | 1 | Filler | |
| 22 | 2487854 | 1 | Cap | 21 |
| 23 | 24870001 | 1 | Joint | 22 |
| 24 | 36862138 | 1 | Joint | |
| 25 | 0746254 | 2 | Setscrew | |
| 26 | 2411152 | 2 | Washer | |
| 27 | 37556148 | 1 | Plate | |
| 28 | 36861429 | 1 | Joint | |
| 29 | 0748505 | 1 | Screw | |
| 30 | 2232151 | 2 | Screw | |
| 31 | 0920054 | 3 | Washer | |
| 32 | 2238153 | 3 | Nut | |
| 33 | 41422703 | 1 | Cover | |
| 34 | 2415361 | 1 | Seal | 33 |
| 35 | 36813137 | 1 | Joint | |
| 36 | 0746255 | 14 | Setscrew | |
| 37 | 0920053 | 14 | Washer | |
| 38 | 0096238 | 4 | Bolt | |
| 39 | 2411152 | 4 | Washer | |
| 40 | 32413415 | 1 | Cover | |
| 41 | 33825419 | 1 | Joint | |
| 42 | 0746252 | 4 | Screw | |
| 43 | 2411152 | 4 | Washer | |
| 44 | 2758346 | 1 | Angle Drive | |
| 45 | 0746019 | 1 | Screw | |
| 46 | 0746053 | 1 | Bolt | |
| 47 | 2411151 | 2 | Washer | |
| 48 | 31415321 | 1 | Camshaft | |
| 49 | 0500012 | 1 | Woodruff Key | |
| 50 | 33153121 | 1 | Washer | |
| 51 | 2116053 | 1 | Pin | |

22

LUBRICATING OIL SYSTEM

LUBRICATION
 SCHMIEREINRICHTUNG
 LUBRIFICAZIONE
 LUBRICATION



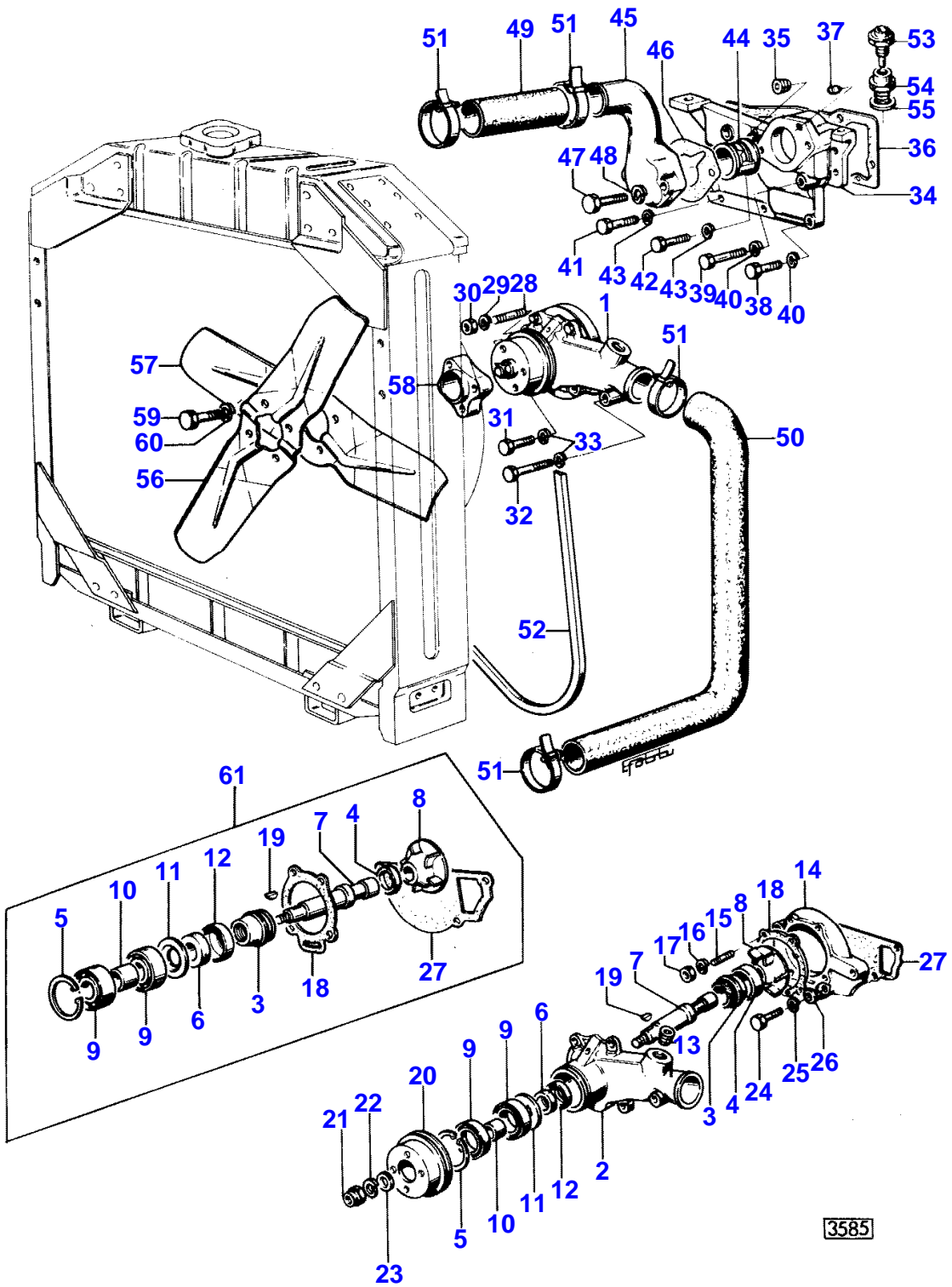
3599

LUBRICATING OIL SYSTEM

| Item | Part Number | Qty | Description | Comments |
|------|-------------|-----|--------------|----------|
| 1 | 37171823 | 1 | Sump | |
| 2 | 36815707 | 1 | Joint | |
| 3 | 2184435 | 6 | Screw | |
| 4 | 0920053 | 6 | Washer | |
| 5 | 0920003 | 6 | Washer | |
| 6 | 0096241 | 11 | Bolt | |
| 7 | 0096215 | 1 | Screw | |
| 8 | 0920003 | 1 | Washer | |
| 9 | 0920053 | 12 | Washer | |
| 10 | 2487004 | 1 | Plug | |
| 11 | 2411160 | 1 | Gasket | |
| 12 | 41733066 | 1 | Balancer | |
| 13 | 37527281 | 1 | Frame | 12 |
| 14 | 2557176 | 2 | Bearing | 12 |
| 15 | 2557180 | 2 | Bearing | 12 |
| 16 | 2431131 | 2 | Plug | 12 |
| 17 | 2431130 | X | Plug | 12 |
| 18 | 0870001 | 2 | Thimble | 12 |
| 19 | 37417472 | 2 | Weight | 12 |
| 20 | 2171225 | 4 | Screw | 12 |
| 21 | 31164581 | 2 | Gear | 12 |
| 22 | 2172513 | 6 | Screw | 12 |
| 23 | 31171276 | 1 | Shaft | 12 |
| 24 | 32731127 | 1 | Shaft | 12 |
| 25 | 2576675 | 2 | Woodruff Key | 12 |
| 26 | 84447 | 1 | Gear | 12 |
| 27 | 2511458 | 1 | Bush | 12 |
| 28 | 33451801 | 1 | Hub | 12 |
| 29 | 33153133 | 1 | Plate | 12 |
| 30 | 0610879 | 1 | Pin | 12 |
| 31 | 0096633 | 1 | Bolt | 12 |
| 32 | 0350005 | 2 | Dowel | 12 |
| 33 | 37714234 | 1 | Body | 12 |
| 34 | 36237156 | 1 | Plate | 12 |
| 35 | 36866722 | 1 | Joint | 12 |
| 36 | 31165531 | 1 | Gear | 12 |
| 37 | 31165461 | 1 | Gear | 12 |
| 38 | 32455123 | 1 | Shaft | 12 |
| 39 | 32712715 | 1 | Plunger | 12 |
| 40 | 31742128 | 1 | Spring | 12 |
| 41 | 33147122 | 1 | Bush | 12 |
| 42 | 0610012 | 1 | Pin | 12 |
| 43 | 0096236 | 5 | Bolt | 12 |
| 44 | 0920053 | 5 | Washer | 12 |
| 45 | 2184546 | 1 | Screw | |
| 46 | 0096441 | 1 | Bolt | |
| 47 | 0096439 | 2 | Bolt | |
| 48 | 0920054 | 4 | Washer | |
| 49 | 37732261 | 1 | Union | |
| 50 | 36832409 | 1 | Joint | |
| 51 | 0096237 | 2 | Bolt | |
| 52 | 0920053 | 2 | Washer | |
| 53 | 37725443 | 1 | Strainer | |
| 54 | 0746052 | 2 | Bolt | |
| 55 | 0920052 | 2 | Washer | |
| 56 | 31787437 | 1 | Dipstick | |
| 57 | 33812108 | 1 | Washer | 56 |
| 58 | 33435123 | 1 | Tube | |
| 59 | 33533103 | 1 | Nut | |
| 60 | 2654403 | 1 | Oil Filter | |
| 61 | 37764181 | 1 | Filter Head | |
| 62 | 36862517 | 1 | Joint | |
| 63 | 0746610 | 2 | Bolt | |
| 64 | 33115118 | 2 | Washer | |

26

WATER PUMP
 PUMPE A EAU
 WASSERPUMPE
 POMPA ACQUA
 BOMBA DE AGUA



Buy Now



Our support email:

ebooklibonline@outlook.com