

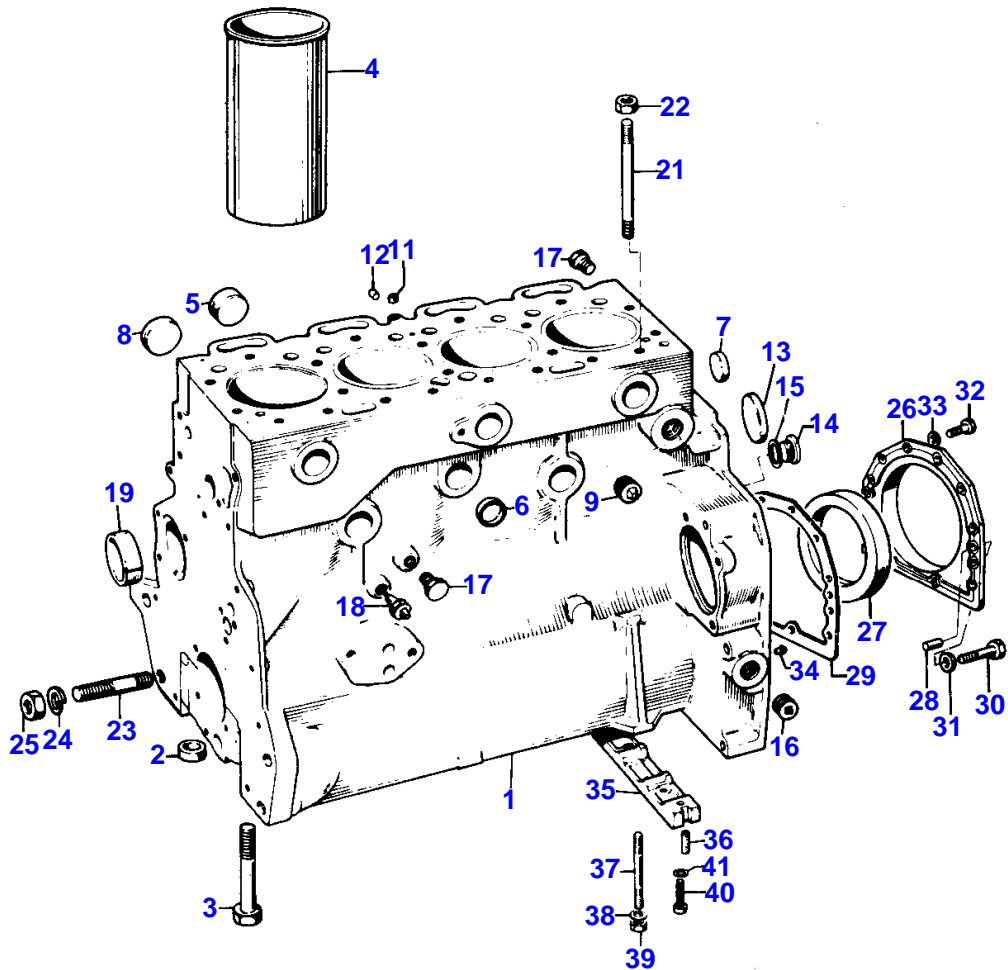
Page Title	Page Number
CYLINDER BLOCK	2
CRANKSHAFT & FLYWHEEL	6
CYLINDER HEAD AND COVER	10
ROCKER ARM	14
TIMING GEAR	16
LUBRICATING OIL SYSTEM	20
WATER PUMP	26
FUEL INJECTION PUMP	30
LIFT PUMP	34
FUEL FILTER AND HEATER PIPINGS	36
STARTER MOTOR	38
ALTERNATOR	40
KIT GASKETS	42
ENGINE	44
FUEL PIPINGS	46
FUEL TANK	50
COOLING SYSTEM	52
INDUCTION MANIFOLD	56
AIR CLEANER	58
DRY AIR CLEANER	60
EXHAUST MANIFOLD AND MUFFLER	62
ENGINE CONTROLS	64
ELECTRICAL EQUIPMENT	68
BATTERY	72
LIGHTS	74
INSTRUMENT PANEL	76
DUAL CLUTCH - LUK TYPE	80
DUAL CLUTCH - O.M.G.	82
CLUTCH CONTROL	84
CENTRE AXLE HOUSING AND TRANSMISSION HOUSING	88
SYNCHRO-MESH TRANSMISSION	90
CONTROLS AND TRANSMISSION LEVERS	96
POWER TAKE OFF - STD LINKAGE	100
POWER TAKE OFF - 540/1000 R.P.M.	104
DIFFERENTIAL	108
DIFFERENTIAL LOCK	110
REAR AXLE HOUSING	112
BRAKES	114
HAND BRAKE	118
HAND BRAKE	121A
HAND BRAKE	121E
BRAKE PUMP	122
BRAKE CYLINDER	124
RIM & TIRES	126
FRONT AXLE - 2 WHEEL DRIVE	130
STEERING HYDRAULIC EQUIPMENT	134
STEERING CONTROL VALVE	142
STEERING PUMP	146
STEERING CYLINDER - 2 WHEEL DRIVE	148
STEERING CYLINDER - 4 WHEELS DRIVE	150
HYDRAULIC LIFT PUMP AND LINES	152
OIL PUMP - HYDRAULIC LIFT	156
HYDRAULIC CONTROL VALVE - HYDRAULIC LIFT	158
HYDRAULIC LIFT	162
CONTROL SENSIBILITY	168
LIFT CONTROL	170
PIPINGS AUXILIARY VALVE	176
PIPINGS AUXILIARY VALVE	179A
VALVES FOR CONTROL VALVE	179E
CYLINDER FOR HYDRAULIC LIFT	179I
AUXILIARY HYDRAULICS VALVE	180
ADDITIONAL POWER OUTLET UNIT	182
LINKAGE CAT. II	184
LINKAGE	187A
FRONT AND REAR HITCH	188
REAR HOOK	189A

TABLE OF CONTENT

00

DRAWBAR	190
MOUNTING FRAME AND FRONT WEIGHTS	192
HOOD BRACKET AND INSTRUMENT PANEL	194
ENGINE HOOD	196
HARDNOSE AND GRILLES	200
FENDERS AND PLATFORM BRACKETS	202
FENDERS AND PLATFORM	204
FRONT FENDERS	207C
SAFETY FRAME	208
SAFETY FRAME	210
SEAT	212
SEAT	215A
SEAT FOR SECOND PASSENGER	216
DECALS AND EMBLEMS	218
TRANSFER GEAR BOX - 4 WHEELS DRIVE	220
TRANSFER GEAR BOX - 4 WHEELS DRIVE	223A
FRONT AXLE - HOUSING - DIFFERENTIAL	224
FRONT AXLE - FINAL DRIVE	230
TOOL GROUP	234
CAB - UPPER AND BOTTOM FRAME	236
CAB - UPPER AND BOTTOM FRAME	239A
CAB - DOORS	240
CAB - DOORS	245C
CAB - RETRO CAB	245G
CAB - WINDOWS	246
CAB - WINDOWS	251A
CAB - WINDSCREEN WIPER AND MIRROR	251C
CAB - WINDSCREEN WIPER AND WIRING	252
CAB - INSULATOR AND FACING	256
CAB - HEATER	260
CAB - HEATER	264

2 CYLINDER BLOCK
 BLOC MOTEUR
 KURBELGEHAUSE
 BLOCCO CILINDRI
 BLOQUE DE CILINDROS



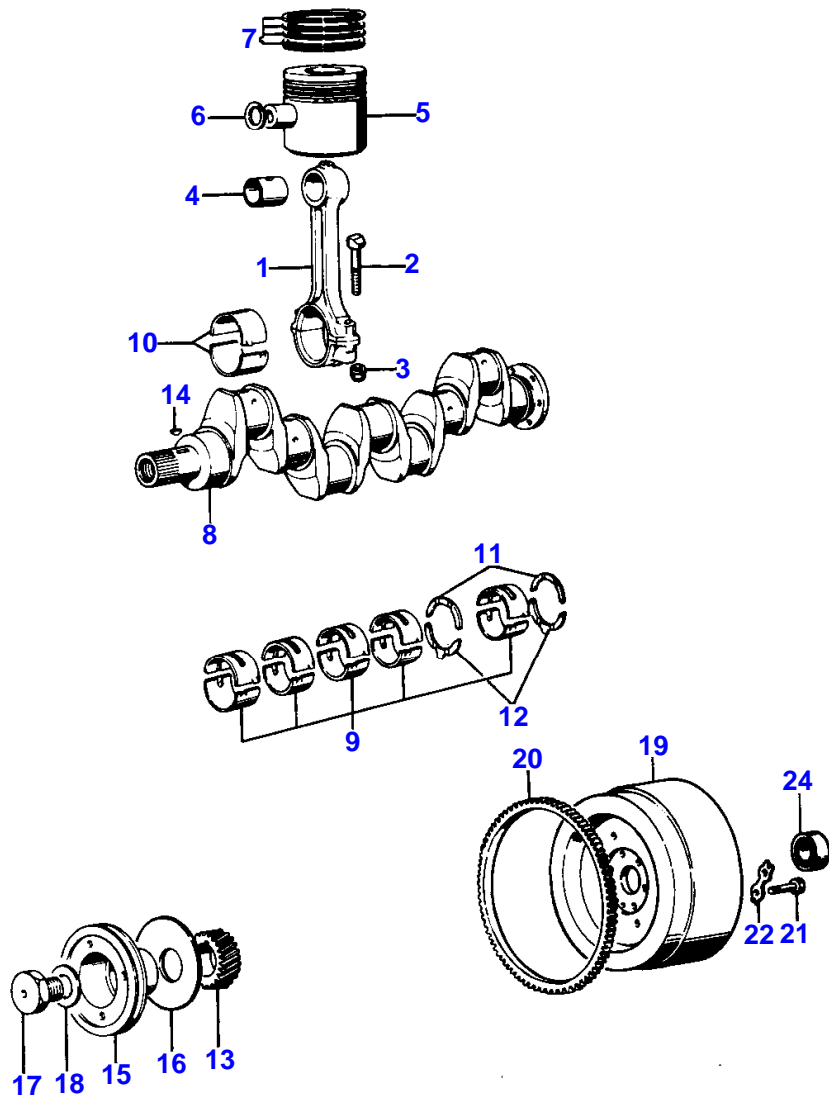
CYLINDER BLOCK

Item	Part Number	Qty	Description	Comments
1	61676	1	Block	
2	33142111	10	Thimble	1
3	32166329	10	Bolt	1
4	31358393	4	Liner	1
5	0650618	4	Plug	1
6	0650563	6	Plug	1
7	0650563	2	Plug	1
8	0650577	4	Plug	
9	0650588	2	Plug	
11	32417134	1	Plug	
12	32114461	1	Plug	
13	32416105	1	Plug	
14	0650582	1	Plug	
15	0920130	1	Washer	
16	0650588	1	Plug	
17	32161114	2	Plug	
18	1423895M1	1	Switch	
19	31134132	1	Bush	
21	32526312	2	Stud	
22	33221316	2	Nut	
23	974496M1	2	Bolt	See Page - Reference Number 52
24	391414X1	2	Washer	See Page - Reference Number 52
25	393643X1	2	Nut Metric	See Page - Reference Number 52
26	37513851	1	Housing	
27	2415391	1	Seal	
28	0350009	2	Dowel	
29	36817157	1	Joint	
30	2172530	31	Capscrew	
31	33112111	2	Washer	
32	0746211	10	Bolt	
33	0920003	10	Washer	
34	32452113	1	Pointer	
35	36277831	1	Bridge Piece	
36	32811408	2	Joint	
37	32517128	2	Stud	
38	0920053	2	Washer	
39	0576002	2	Nut	
40	2176369	2	Screw	
41	0920521	2	Washer	

6

CRANKSHAFT & FLYWHEEL

VILEBREQUIN ET VOLANT
 KURBELWELLE UND SCHWUNGRAD
 ALBERO MOTORE E VOLANO
 CIGUENAL Y VOLANTE



CRANKSHAFT & FLYWHEEL

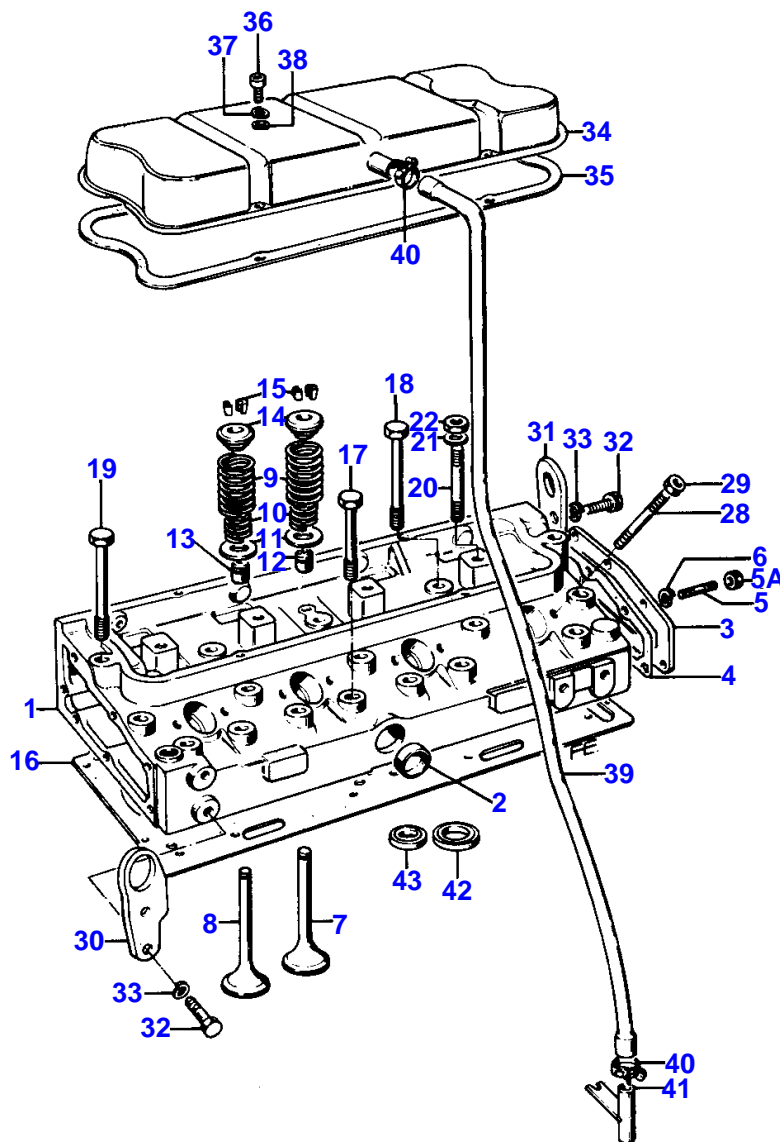
Item	Part Number	Qty	Description	Comments
1	84920	4	Conrod	
2	32762116	8	Bolt	
3	33221321	8	Nut	
4	31134123	4	Bush	
5	68301	4	Kit, Piston	
6	0170002	8	Circlip	5
7	92463	4	Kit, Ring	
8	94435	1	Kit, Crankshaft	
9	81558	1	Kit, Bearing	8
	81558A	X	Kit, Bearing	Thickness -0,254 MM. (A)
9	81558B	X	Kit, Bearing	Thickness -0,508 MM. (A)
9	81558C	X	Kit, Bearing	Thickness -0,762 MM. (A)
10	85042	1	Kit, Bearing	(A)
				8
10	85042A	X	Kit, Bearing	Thickness -0,254 MM. (A)
10	85042B	X	Kit, Bearing	Thickness -0,508 MM. (A)
10	85042C	X	Kit, Bearing	Thickness -0,762 MM.
11	31137311	2	Washer	8
	31137312	X	Thrust Washer	Thickness +0,178 MM.
12	31137321	2	Washer	8
	31137322	X	Thrust Washer	Thickness +0,178 MM.
13	31171681	1	Gear,Crankshaft	
14	0500012	1	Woodruff Key	
15	31148792	1	Pulley	
16	33125416	1	Washer	
17	32162318	1	Screw	
18	33125124	1	Washer	
19	1825511M1	1	Flywheel	
20	0410236	1	Starter Ring	
21	973013M1	6	Bolt	
22	0921062	3	Tab Washer	
24	339599X1	1	Bearing Ball	

(A)
BEARINGS ARE PREFINISHED

10

CYLINDER HEAD AND COVER

CULASSE ET COUVERCLE
 ZYLINDERKOPF UND DECKEL
 TESTA CILINDRI E COPERCHIO
 CULATA Y TAPA



CYLINDER HEAD AND COVER

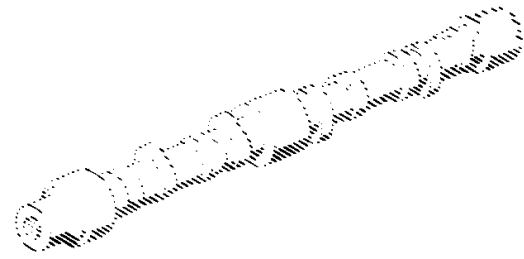
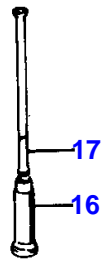
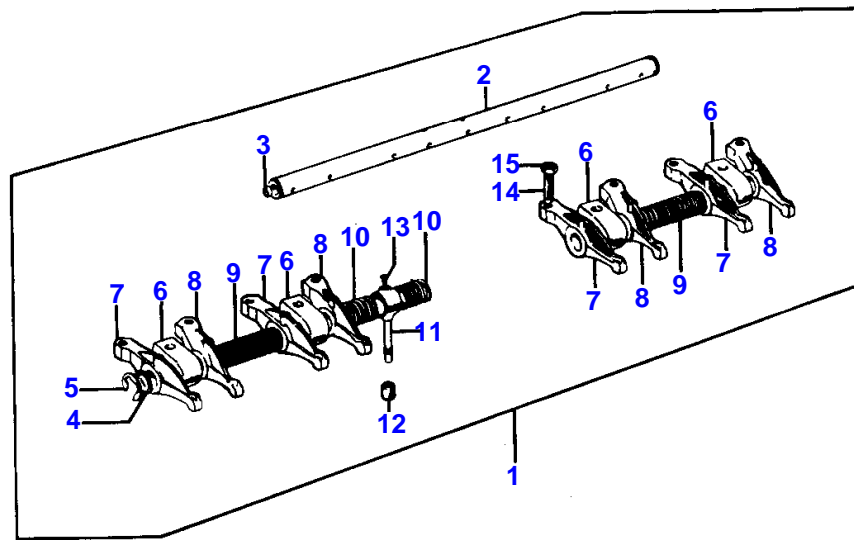
Item	Part Number	Qty	Description	Comments
1	86584	1	Cylinder Head	
2	0650563	1	Plug	1
3	37553142	1	Cover	1
4	36851409	1	Joint	1
5	0826244	6	Stud	1
6	0920053	6	Washer	1
7	31431641	4	Valve Inlet	1
	31431401	X	Valve Inlet	Thickness +0,076 MM.
	31431402	X	Valve Inlet	Thickness +0,38 MM.
	31431403	X	Valve Inlet	Thickness +0,76 MM.
8	31431881	4	Valve Exhaust	1
	31431411	X	Valve Exhaust	Thickness +0,076 MM.
	31431412	X	Valve Exhaust	Thickness +0,38 MM.
	31431413	X	Valve Exhaust	Thickness +0,76 MM.
9	31745121	8	Spring	
10	31744131	8	Spring	
11	33123117	8	Washer	
12	33817125	4	Seal	
13	33817117	4	Seal	
14	33423122	8	Cap	
15	33173108	8	Cotter	(A)
16	36812338	1	Gasket	
17	32181424	6	Screw	
18	32181425	12	Screw	
19	32181426	2	Screw	
20	0826628	4	Stud	
21	0920006	1	Washer	
22	2211284	4	Nut	
28	0826280	8	Stud	
29	0576002	8	Nut	
30	36475706	1	Plate	
31	36177111	1	Plate	
32	0746453	4	Setscrew	
33	0920054	4	Washer	
34	37188549	1	Cyl.Head Cover	
35	36811122	1	Joint	
36	2172513	4	Screw	
37	0920052	4	Washer	
38	0920002	4	Washer	
39	33872516	1	Pipe,Breather	
40	2481802	2	Clip	
41	35731144	1	Pipe,Breather	
42	33125121	4	Insert	
43	33152139	4	Insert	

(A)
SERVICED IN PAIR

14

ROCKER ARM

ARBRE CULBUTEURS
 ZIPPHEBELWELLE
 ASSE E BILANCIERI
 EJE DE BALANCINES

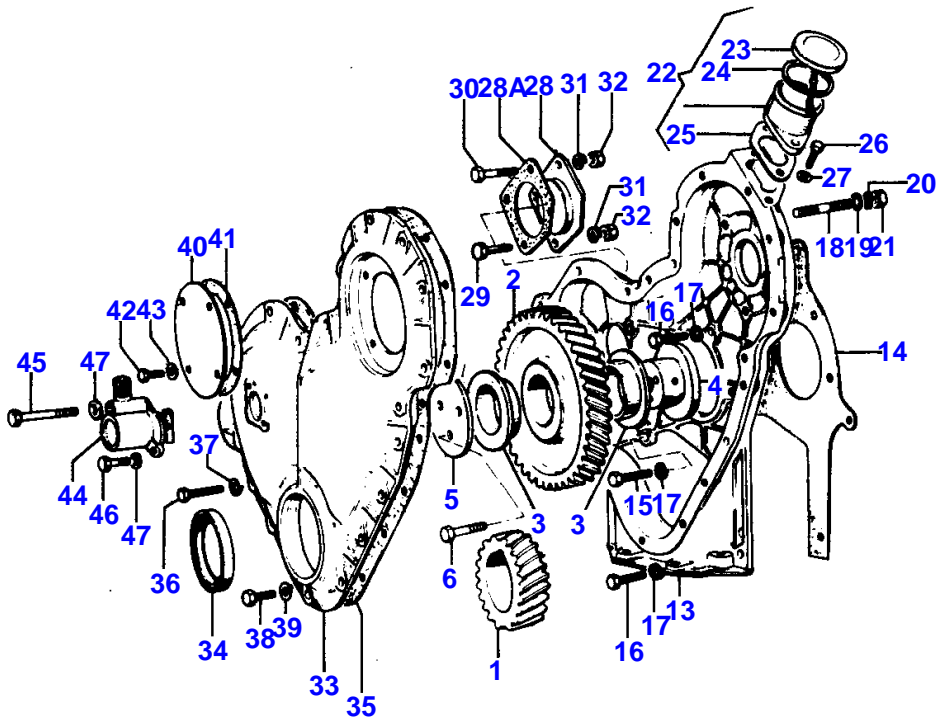
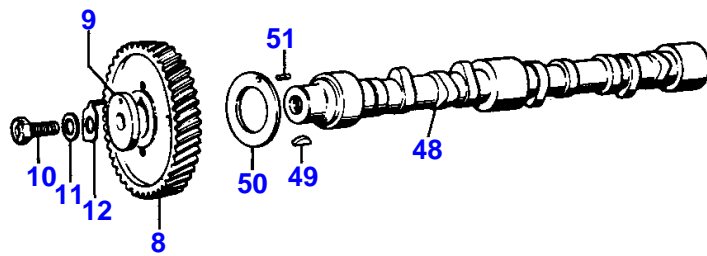


ROCKER ARM

Item	Part Number	Qty	Description	Comments
1	87618	1	Rockerarm	
2	83450	1	Shaft	1
3	0650507	2	Plug	2
4	33117415	2	Washer	1
5	0170151	2	Circlip	1
6	37521331	4	Bracket	1
7	37371271	4	Lever	Left Hand 1
8	37371281	4	Lever	Right Hand 1
9	31744123	2	Spring	1
10	31743108	2	Spring	1
11	35511111	1	Pipe	1
12	33811113	1	Olive	1
13	0726504	1	Setscrew	1
14	0720579	8	Screw	1
15	0576052	8	Nut	1
16	31434163	8	Tappet	
17	31434307	8	Pushrod	

16

TIMING GEAR
 DISTRIBUTION
 STEUERUNG
 DISTRIBUZIONE
 DISTRIBUCION

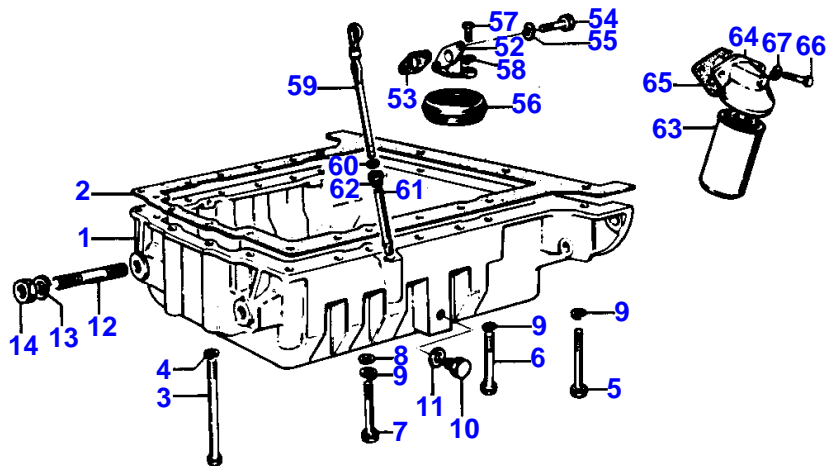
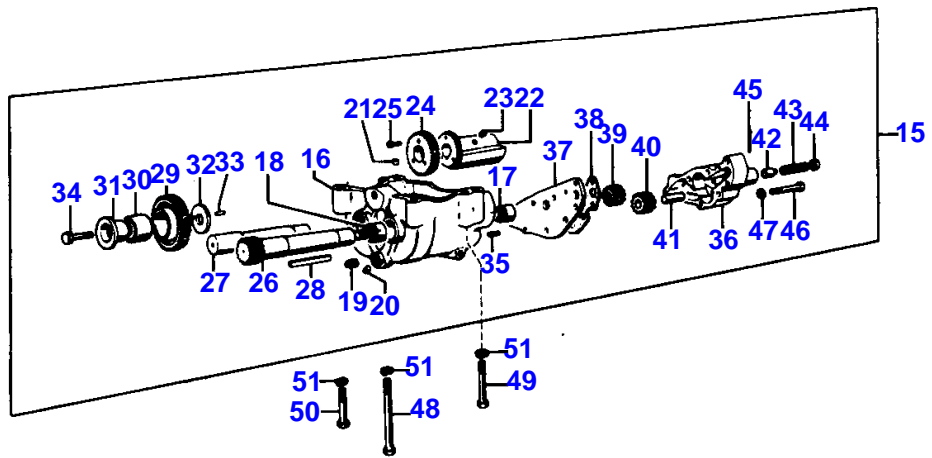


TIMING GEAR

Item	Part Number	Qty	Description	Comments
1	31171681	1	Gear,Crankshaft	
2	41115023	1	Idler	
3	0050345	2	Bush	2
4	33426161	1	Hub	
5	0941082	1	Plate	
6	0096439	3	Bolt	
8	31171353	1	Gear,Camshaft	
9	33153128	1	Washer	
10	32161209	1	Screw	
11	33115408	1	Washer	
12	31733121	1	Washer	
13	37161642	1	Timing Case	
14	36814127	1	Joint	
15	0746211	1	Bolt	
16	0746255	8	Setscrew	
17	0920053	9	Washer	
18	0826277	3	Stud	
19	0920003	3	Washer	
20	0920053	3	Washer	
21	0576002	3	Nut	
22	35784111	1	Filler	
23	2487854	1	Cap	22
24	24870001	1	Joint	23
25	36862138	1	Joint	
26	0746254	2	Setscrew	
27	2411152	2	Washer	
28	37556148	1	Plate	
28A	36861429	1	Joint	
29	0748505	1	Screw	
30	2232151	2	Screw	
31	0920054	3	Washer	
32	2238153	3	Nut	
33	41422703	1	Cover	
34	2415361	1	Seal	33
35	36813137	1	Joint	
36	0746255	14	Setscrew	
37	0920053	14	Washer	
38	0096238	4	Bolt	
39	2411152	4	Washer	
40	32413415	1	Cover	
41	33825419	1	Joint	
42	0746252	4	Screw	
43	2411152	4	Washer	
44	2758346	1	Angle Drive	
45	0746019	1	Screw	
46	0746053	1	Bolt	
47	2411151	2	Washer	
48	31415321	1	Camshaft	
49	0500012	1	Woodruff Key	
50	33153121	1	Washer	
51	2116053	1	Pin	

20

LUBRICATING OIL SYSTEM
 LUBRICATION
 SCHMIEREINRICHTUNG
 LUBRIFICAZIONE
 LUBRICATION



MASSEY FERGUSON

MF 284 S TRACTOR - 3301613

3301613

LUBRICATING OIL SYSTEM

20

Item	Part Number	Qty	Description	Comments
1	37171823	1	Sump	
2	36815707	1	Joint	
3	2184435	4	Screw	
4	0920053	4	Washer	
5	2184435	2	Screw	
6	0096241	11	Bolt	
7	0096215	1	Screw	
8	0920003	1	Washer	
9	0920053	14	Washer	
10	2487004	1	Plug	
11	2411260	1	Washer	
12	32517128	2	Stud	
13	0920053	2	Washer	
14	0576002	2	Nut	
15	41733066	1	Balancer	
16	37527281	1	Frame	15
17	2557176	2	Bearing	15
18	2557180	2	Bearing	15
19	2431131	2	Plug	15
20	2431A051	X	Plug	15
21	33137408	2	Thimble	15
22	37417472	2	Weight	15
23	2171225	4	Screw	15
24	31164581	2	Gear	15
25	2172513	6	Screw	15
26	31171276	1	Shaft	15
27	32731127	1	Shaft	15
28	2576675	2	Woodruff Key	15
29	84447	1	Gear	15
30	2511458	1	Bush	29
31	33451801	1	Hub	15
32	33153133	1	Plate	15
33	0610879	1	Pin	15
34	0096633	1	Bolt	15
35	0350005	2	Dowel	15
36	37714234	1	Body	15
37	36237156	1	Plate	15
38	36866722	1	Joint	15
39	31165531	1	Gear,Oil Pump	15
40	31165461	1	Gear,Balancer	15
41	32455123	1	Shaft	15
42	32712715	1	Plunger	15
43	31742128	1	Spring	15
44	33157122	1	Cap	15
45	0610012	1	Pin	15
46	0096236	5	Bolt	15
47	0920053	5	Washer	15
48	2184546	1	Screw	
49	0096441	1	Bolt	
50	0096439	2	Bolt	
51	0920054	4	Washer	
52	37732261	1	Union	
53	36832409	1	Joint	
54	0096237	2	Bolt	
55	0920053	2	Washer	
56	37725443	1	Strainer	
57	0746052	2	Bolt	
58	0920052	2	Washer	
59	31787437	1	Dipstick	
60	33812108	1	Washer	59
61	33435123	1	Tube	
62	33533103	1	Nut	
63	2654403	1	Oil Filter	
64	37764181	1	Filter Head	
65	36862517	1	Joint	
66	0746610	2	Bolt	
67	33115118	2	Washer	

Buy Now



Our support email:

ebooklibonline@outlook.com