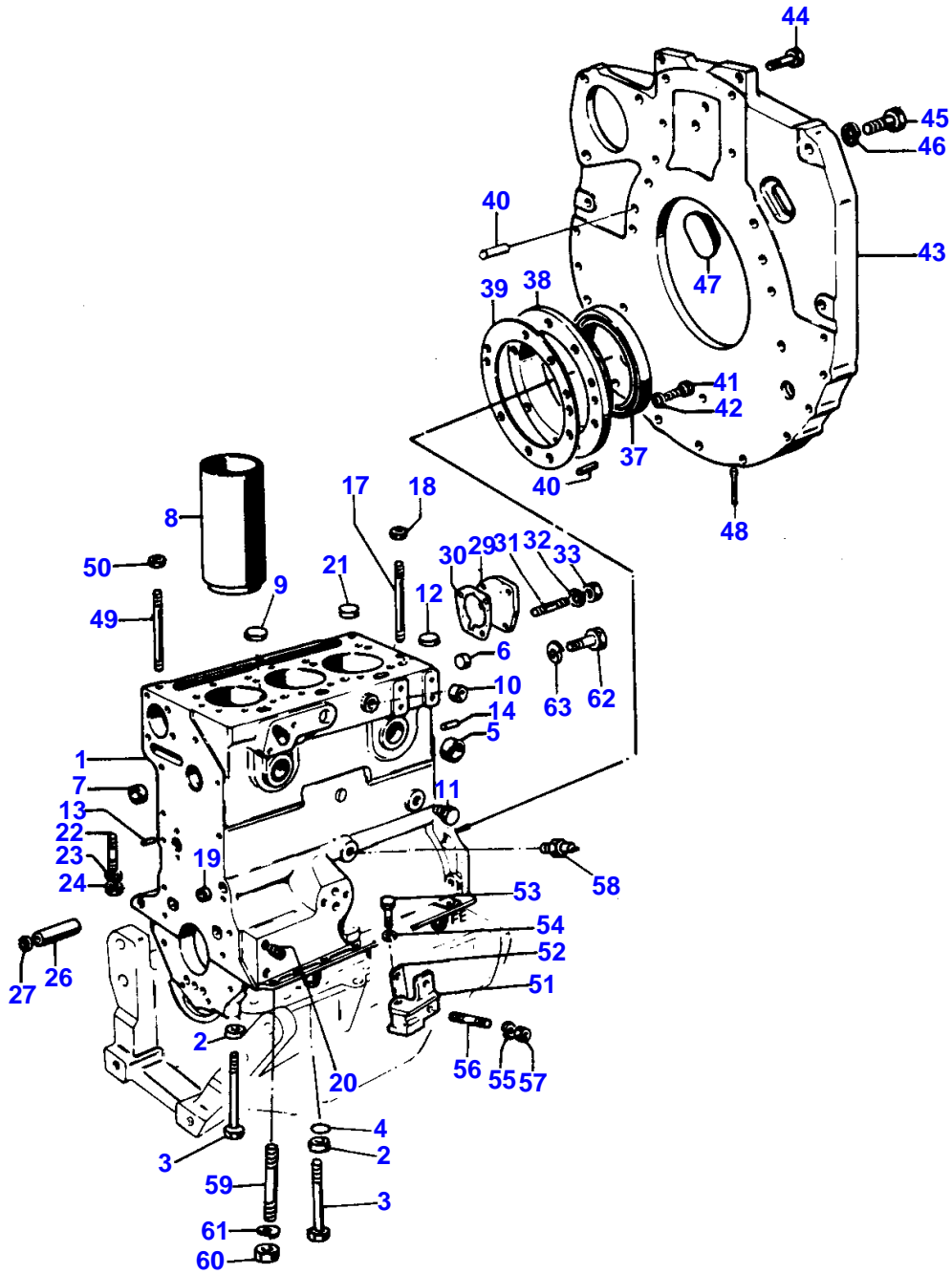


Page Title	Page Number
CYLINDER BLOCK - AD3.152	2
CRANKSHAFT & FLYWHEEL - AD3.152	4
CYLINDER HEAD AND COVER - AD3.152	6
ROCKER ARM - AD3.152	8
TIMING GEAR - AD3.152	10
LUBRICATING OIL SYSTEM - OIL SUMP - AD3.152	12
LUBRICATING OIL FILTER - AD3.152	22
WATER PUMP AND FAN - AD3.152	24
FUEL PIPINGS - AD3.152	28
FUEL FILTER	32
FUEL LIFT PUMP - AD3.152	34
STARTER MOTOR	36
ALTERNATOR	38
KIT GASKETS - AD3.152	40
ENGINE - AD3.152	42
FUEL PIPINGS	44
FUEL PIPINGS	46
FUEL TANK	48
FUEL TANK	50
FUEL TANK	52
RADIATOR	54
INDUCTION MANIFOLD AND AIR FILTER	56
EXHAUST MANIFOLD AND MUFFLER	58
EXHAUST MANIFOLD AND MUFFLER - MUFFLER VERTICAL	60
ENGINE CONTROLS	62
ELECTRICAL EQUIPMENT	64
ELECTRICAL WIRING	66
BATTERY	68
LIGHTS	70
LIGHTS	72
INSTRUMENT PANEL	74
DUAL CLUTCH - LUK TYPE	76
DUAL CLUTCH - O.M.G.	80
CLUTCH CONTROL	84
CENTRE AXLE HOUSING AND TRANSMISSION HOUSING	88
SYNCHRO-MESH TRANSMISSION	92
REDUCER	96
CONTROLS AND TRANSMISSION LEVERS	98
REDUCER CONTROLS	102
POWER TAKE OFF - STD	104
POWER TAKE OFF - 540/1000 R.P.M.	106
DIFFERENTIAL	108
REAR AXLE HOUSING	110
DIFFERENTIAL LOCK	112
DIFFERENTIAL LOCK	114
BRAKING CONTROL	116
DRY BRAKES	118
WET BRAKES	120
HAND BRAKE	122
HAND BRAKE	124
BRAKE PUMP	128
BRAKE CYLINDER	130
HYDRAULIC TRAILER BRAKING SYSTEM	132
RIM & TIRES	134
FRONT AXLE - 2 WHEEL DRIVE	138
STEERING HYDRAULIC EQUIPMENT	140
STEERING CONTROL VALVE - 2 WHEEL DRIVE	144
STEERING CONTROL VALVE - 2 WHEEL DRIVE	146
STEERING CONTROL VALVE - 4 WHEELS DRIVE	148
STEERING CONTROL VALVE - 4 WHEELS DRIVE	150
STEERING PUMP	152
STEERING CYLINDER - 2 WHEEL DRIVE	154
STEERING CYLINDER - 4 WHEELS DRIVE	156
STEERING CYLINDER - 4 WHEELS DRIVE	158
HYDRAULIC LIFT PIPINGS	160
OIL PUMP - HYDRAULIC LIFT	164

TABLE OF CONTENT

HYDRAULIC CONTROL VALVE - HYDRAULIC LIFT	166
HYDRAULIC CONTROL VALVE - HYDRAULIC LIFT	168
HYDRAULIC LIFT	170
LIFT CONTROL	174
LIFT CONTROL	178
PIPINGS AUXILIARY CONTROL VALVES	182
PIPINGS AUXILIARY CONTROL VALVES	184
PIPINGS AUXILIARY CONTROL VALVES	186
ADDITIONAL POWER OUTLET UNIT	188
AUXILIARY HYDRAULICS VALVE	190
AUXILIARY HYDRAULICS VALVE - STD	192
AUXILIARY HYDRAULICS VALVE - STD LINKAGE	194
AUXILIARY HYDRAULICS VALVE - FLOATING	196
AUXILIARY HYDRAULICS VALVE - FLOATING	198
VALVE - HYDRAULICS EQUIPMENT	200
VALVE - HYDRAULICS EQUIPMENT	202
LINKAGE	204
LINKAGE	208
LINKAGE	212
REAR HOOK	216
DRAWBAR	218
REAR HOOK	220
REAR HOOK	222
REAR HOOK	224
HOOK AND FRONT WEIGHTS	226
HOOK AND FRONT WEIGHTS	228
HARDNOSE AND GRILLES	230
ENGINE HOOD	232
HOOD BRACKET AND INSTRUMENT PANEL	234
FENDERS AND PLATFORM	236
FENDERS AND PLATFORM	238
FRONT FENDERS	242
FRONT FENDERS	244
SEAT	246
SEAT	248
SEAT	250
SAFETY FRAME	252
DECAL AND EMBLEMS	254
TRANSFER GEAR BOX - 4 WHEELS DRIVE	256
TRANSFER GEAR BOX - 4 WHEELS DRIVE	258
FRONT AXLE - HOUSING - DIFFERENTIAL	260
FRONT AXLE - FINAL DRIVE	264
TOOL GROUP	268



Item	Part Number	Qty	Description	Comments
				AD3.152
1	91049	1	Block	Up to Serial or Engine Number UA391044D
	41423506	1	Cylinder Block	From Serial or Engine Number UA391045DL
2	33137408	8	Thimble	1
3	32181441	8	Screw	1
	32181442	6	Screw	1
4	2415608	2	O Ring	
5	0650563	4	Plug	1
6	0650664	1	Plug	1
7	0650710	1	Plug	1
8	31358345	3	Liner	(C)
	31358323	3	Liner	(A, B)
				1
9	33141124	1	Plug	1
10	32417115	2	Plug	1
11	32161357	1	Plug	
12	33157143	2	Plug	
13	0350005	1	Dowel	
14	0350015	2	Dowel	
15	2485A204	1	Plug	1
17	32524132	2	Stud	
18	33221315	2	Nut	
19	0650566	2	Plug	
20	32114471	3	Plug	
21	33157142	2	Plug	
22	0826285	1	Stud	
23	0920053	1	Washer	
24	0576002	1	Nut	
26	33266125	1	Spacer	
27	33121417	X	Shim	Thickness 0,9 MM
	33121416	X	Shim	Thickness 0,25 MM
	0760050	X	Shim	Thickness 0,13 MM
	33121415	X	Shim	Thickness 0,05 MM
29	37416753	1	Plate	
30	36862511	1	Joint	
31	0826201	3	Stud	
32	0920053	3	Washer	
33	0576002	3	Nut	
37	2418F475	1	Seal	38
38	4142V002	1	Housing	
39	33826111	1	Joint	
40	0350016	2	Dowel	
41	0746255	9	Setscrew	
42	0920003	9	Washer	
43	37147974	1	Plate	
	37147975	1	Plate	
44	0720798	2	Screw	
45	0746454	6	Setscrew	
46	0920054	6	Washer	
47	37813113	1	Plug	
48	0610045	1	Pin	
49	32524148	3	Stud	
50	33221315	3	Nut	
51	38156311	1	Bracket	
52	36113131	1	Spacer	
53	0097109	1	Bolt	
54	0920058	1	Washer	
55	0920056	2	Washer	
56	0826833	2	Stud	
57	0576005	2	Nut	
58	1423895M91	1	Switch	Up to Serial or Engine Number 133A00273/233A000732
	1877721M92	1	Pressure Switch	From Serial or Engine Number 133A00274/233A000733
59	0826265	2	Stud	
60	0576002	2	Nut	
61	0920053	2	Washer	
62	0746253	2	Screw	
63	0920053	2	Washer	

(A)  
SEMIFINISHED  
(B)

MASSEY FERGUSON

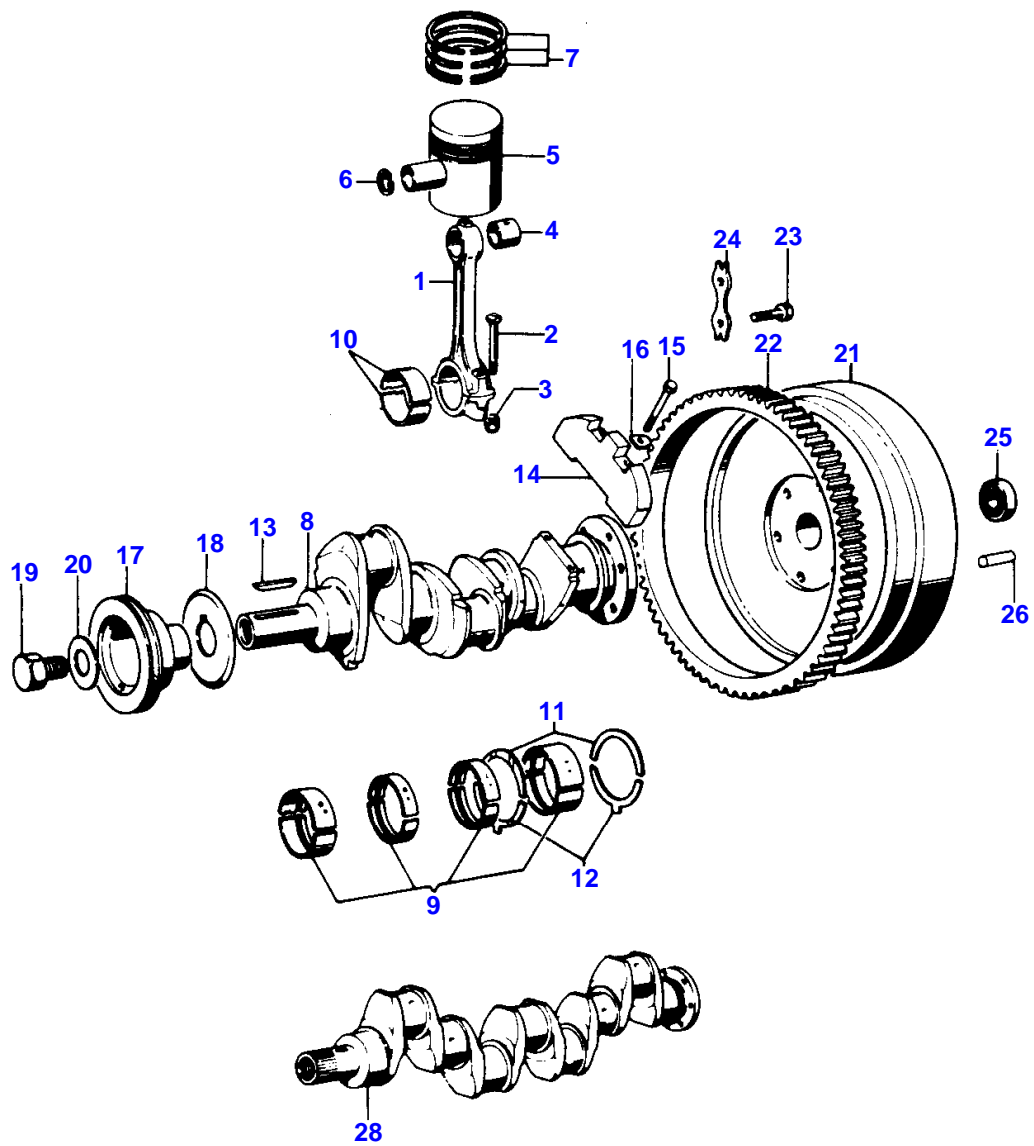
MF 154 S TRACTOR - 3310470

3310470

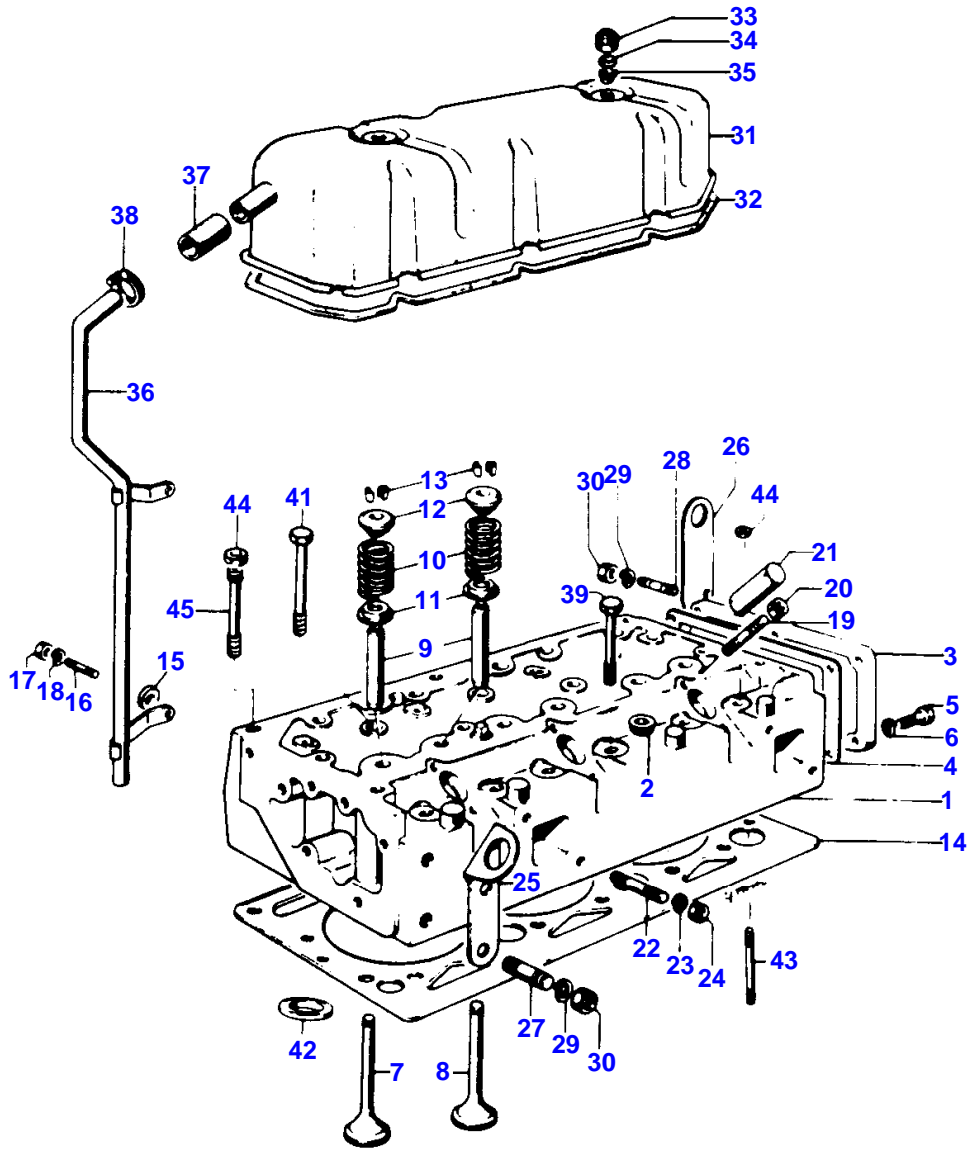
CYLINDER BLOCK - AD3.152

2

Item	Part Number	Qty	Description	Comments
				PRESS FITTING (C) SLIP FIT



Item	Part Number	Qty	Description	Comments
				AD3.152
1	ZZ90010	3	Kit, Conrod	
2	0095250	6	Bolt	1
3	33221327	6	Nut	1
4	31134151	3	Bush	1
5	68332	3	Kit, Piston	(C)
	68331	3	Kit, Piston	(D)
6	0170001	6	Circlip	5
7	41158065	3	Kit, Piston Ring	
8	94458	1	Kit, Crankshaft	From Serial or Engine Number UA391045DL
9	68084	X	Kit, Bearing	(A)
				8
9	68084A	X	Kit, Bearing	(A)
				Thickness -0,254 MM.
9	68084B	X	Kit, Bearing	(A)
				Thickness -0,508 MM.
9	68084C	X	Kit, Bearing	(A)
				Thickness -0,762 MM.
10	85036	X	Kit, Bearing	(A)
				8
10	85036A	X	Kit, Bearing	(A)
				Thickness -0,254 MM.
10	85036B	X	Kit, Bearing	(A)
				Thickness -0,508 MM.
10	85036C	X	Kit, Bearing	(A)
				Thickness -0,762 MM.
11	31137211	2	Thrust Washer	8
	31137212	X	Washer	Thickness +0,178 MM.
12	31137221	2	Thrust Washer	8
	31137222	X	Washer	Thickness +0,178 MM.
13	36271704	1	Woodruff Key	
14	31328241	2	Weight	
15	2185189	4	Screw	
16	31731516	2	Washer	Right Hand
	31731515	2	Washer	Left Hand
17	31147788	1	Pulley	
18	33176137	1	Washer	
19	32162312	1	Screw	
20	33125112	1	Washer	
21	1825512M1	1	Flywheel	
	1824617M1	1	Flywheel	(B)
22	0410236	1	Starter Ring	
23	973013M1	6	Bolt	
24	0921062	3	Tab Washer	
25	339599X1	1	Bearing Ball	
26	1817069M1	2	Pin	
27	0330811	1	Spacer	
28	U5BG0012	1	Kit, Crankshaft	Up to Serial or Engine Number UA391044D
				(A)
				SEMIFINISHED
				(B)
				USED ONLY FOR TRACTORS WITH SINGLE CLUTCH
				(C)
				PRE-TOPPED
				(D)
				SEMIFINISHED

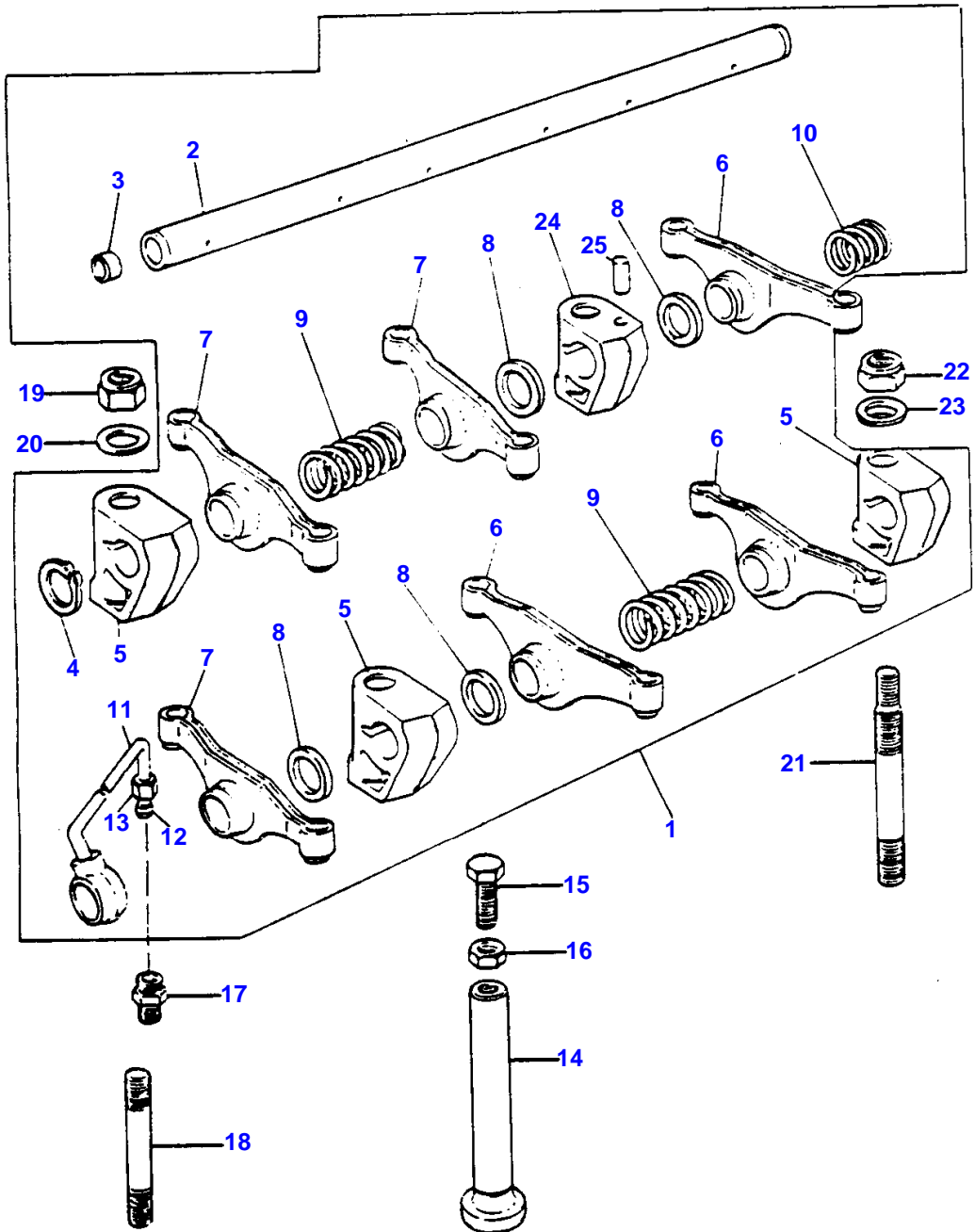




CYLINDER HEAD AND COVER - AD3.152

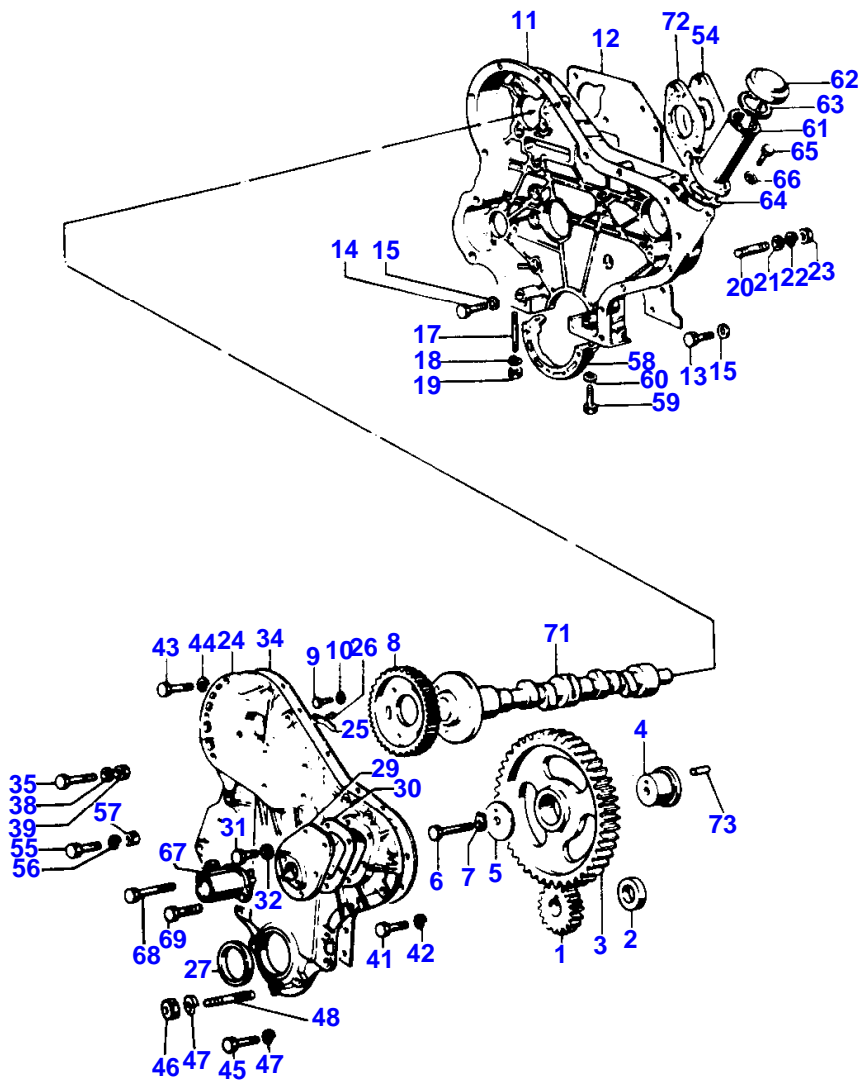
Item	Part Number	Qty	Description	Comments
				AD3.152
1	89141	1	Cylinder Head	Up to Serial or Engine Number U648053G
	A5BD2722	1	Cylinder Head	From Serial or Engine Number U648054G
2	2431154	1	Plug	1
3	3612M002	1	Plate	1
4	0490485	1	Joint	1
5	0746254	6	Setscrew	1
6	0920053	6	Washer	1
7	31431681	3	Valve Inlet	1
8	31431011	3	Valve Exhaust	1
9	33261723	6	Guide	1
10	0780006	6	Spring	1
11	33415133	6	Washer	1
12	33423148	6	Cap	1
13	0230001	12	Cotter	(A) 1
14	3681E006	1	Head Gasket	
15	0920460	1	Spacer	
16	0827622	1	Stud	
17	0576002	1	Nut	
18	0920053	1	Washer	
19	2216105	6	Stud	
20	0576002	3	Nut	
21	32726512	3	Nut	
22		4	Washer	See Page - Reference Number 58-60
23		4	Washer	See Page - Reference Number 58-60
24		4	Nut	See Page - Reference Number 58-60
25	36456321	1	Plate	
26	36531408	1	Plate	
27	0826462	2	Stud	
28	0826466	2	Stud	
29	0920054	4	Washer	
30	0576051	4	Nut	
31	37188557	1	Cyl.Head Cover	
32	36811115	1	Joint	
33	0576102	2	Nut	
34	0920003	2	Washer	
35	0920302	2	Washer	
36	35732479	1	Pipe	
37	0202058	1	Hose	
38	2481863	2	Clip	
39	32181457	4	Screw	
41	32181458	9	Screw	
42	33124428	X	Insert	
43	32524132	2	Stud	
44	33221329	5	Nut	
45	32524148	3	Stud	

(A)  
SERVICED IN PAIR

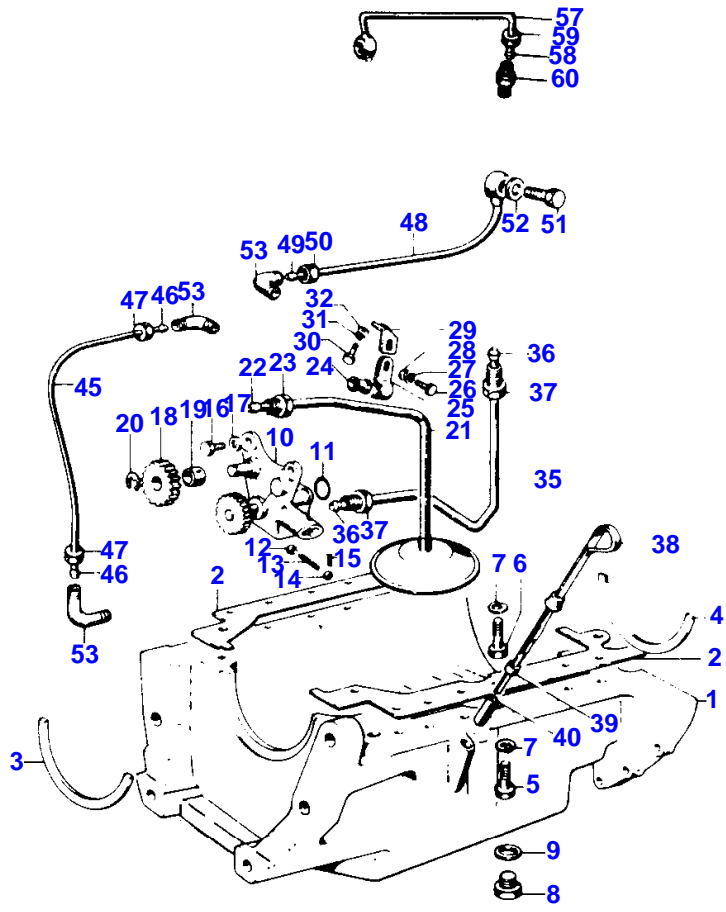


ROCKER ARM - AD3.152

Item	Part Number	Qty	Description	Comments
				AD3.152
1	41151306	1	Rocker Shaft Ass	
2	U7LR0002	1	Rocker Shaft	1
3	0650507	2	Plug	2
4	0170033	2	Circlip	1
5	0101138	3	Bracket	1
6	0520429	3	Lever	Left Hand Alternative 1
6	3737A031	3	Lever	Left Hand Alternative 1
7	0520430	3	Lever	Right Hand Alternative 1
7	3737A041	3	Lever	Right Hand Alternative 1
8	0330505	5	Spacer	1
9	0780005	2	Spring	1
10	0780175	1	Spring	1
11	35568352	1	Pipe	1
12	0566002	1	Olive	11
13	0576111	1	Nut	11
14	0860012	6	Tappet	
15	0720677	6	Screw	
16	0576052	6	Nut	
17	0206002	1	Union	
18	2214209	2	Stud	
19	2211283	2	Nut	
20	0920004	2	Washer	
21	32754435	2	Stud	
22	2211283	2	Nut	
23	0920004	2	Washer	
24	37521212	1	Bracket	
25	2112A066	1	Pin	



Item	Part Number	Qty	Description	Comments
				AD3.152
1	0410132	1	Gear	Number of teeth/spines 25
2	0330811	1	Spacer	
3	31164362	1	Gear	Number of teeth/spines 90
4	0995447	1	Hub	
5	0940738	1	Plate	
6	0095199	1	Screw	
7	0920883	1	Washer	
8	0410241	1	Gear	Number of teeth/spines 50
9	0746214	3	Screw	
10	0920053	3	Washer	
11	37161481	1	Housing	
12	36814119	1	Joint	
13	0746355	12	Screw	
14	0096234	2	Bolt	
15	0920053	14	Washer	
17	0826265	2	Stud	
18	0920053	2	Washer	
19	0576002	2	Nut	
20	0827619	3	Stud	
21	0920003	3	Washer	
22	0920053	3	Washer	
23	0576002	3	Nut	
24	A5FH0245	1	Kit, Front Cover	
25	3661P002	1	Spring	24
26	2126151	1	Rivet	24
27	2415344	1	Seal	24
29	37523171	1	Cover	24
30	36862512	1	Joint	24
31	0748353	6	Screw	24
32	2411151	6	Washer	24
34	36813136	1	Joint	
35	0096213	2	Bolt	
38	0920053	3	Washer	
39	0576002	3	Nut	
41	0748353	8	Screw	
42	0920052	8	Washer	
43	0748414	2	Setscrew	
44	0920053	2	Washer	
45	0748405	3	Screw	
46	0576002	1	Nut	
47	0920053	2	Washer	
48	0827619	1	Stud	
54	37461104	1	Plate	
55	0748510	2	Bolt	
56	0920054	2	Washer	
57	2238153	2	Nut	
58	37354312	1	Cover	
59	0096232	2	Bolt	
60	0920053	2	Washer	
61	35784123	1	Filler	
62	2487854	1	Cap	61
63	24870001	1	Joint	62
64	36837413	1	Joint	
65	0746254	2	Setscrew	
66	2411152	2	Washer	
67	2758346	1	Angle Drive	
68	0748353	1	Screw	
69	0748357	1	Screw	
71	31415261	1	Camshaft	
72	36835413	1	Joint	
73	0350005	1	Dowel	



**Buy Now**



Our support email:

[ebooklibonline@outlook.com](mailto:ebooklibonline@outlook.com)