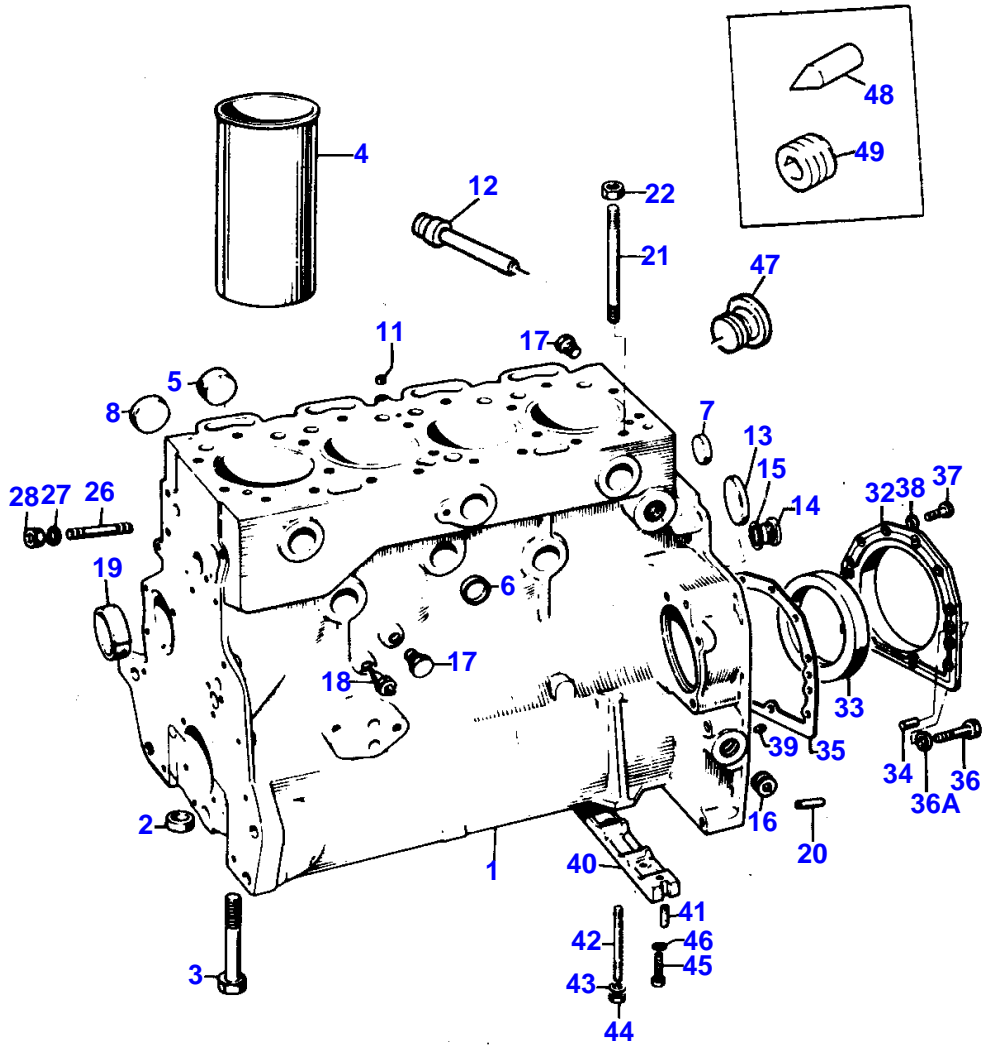


| Page Title  | Page Number |
|---|-------------|
| CYLINDER BLOCK - A4.248                           | 2           |
| CRANKSHAFT & FLYWHEEL - A4.248                    | 6           |
| CYLINDER HEAD AND COVER - A4.248                  | 8           |
| ROCKER ARM - A4.236-A4.248                        | 12          |
| TIMING GEAR - A4.236-A4.248                       | 14          |
| LUBRICATING OIL SYSTEM - OIL SUMP - A4.236-A4.248 | 18          |
| LUBRICATING OIL SYSTEM - OIL SUMP - A4.248        | 20          |
| BALANCER UNIT - A4.236-A4.248                     | 21A         |
| BALANCER UNIT - A4.236-A4.248                     | 21C         |
| BALANCER UNIT - A4.236-A4.248                     | 21E         |
| LUBRICATING OIL SYSTEM                            | 21G         |
| WATER PUMP AND FAN - A4.248                       | 22          |
| FUEL PIPINGS - A4.248                             | 26          |
| FUEL FILTER                                       | 28          |
| LIFT PUMP   | 30          |
| STARTER MOTOR                                     | 32          |
| STARTER MOTOR                                     | 34          |
| STARTER MOTOR                                     | 35A         |
| ALTERNATOR  | 36          |
| ALTERNATOR  | 38          |
| KIT GASKETS                                       | 40          |
| ENGINE - A4.248                                   | 42          |
| FUEL TANK   | 44          |
| FUEL TANK   | 46          |
| FUEL TANK AND PIPINGS                             | 48          |
| RADIATOR  | 50          |
| INDUCTION MANIFOLD AIR                            | 54          |
| AIR FILTER  | 56          |
| EXHAUST MANIFOLD AND MUFFLER - MUFFLER HORIZONTAL | 58          |
| EXHAUST MANIFOLD AND MUFFLER - MUFFLER VERTICAL   | 60          |
| ENGINE CONTROLS                                   | 62          |
| ELECTRICAL WIRING                                 | 64          |
| BATTERY   | 66          |
| LIGHTS  | 68          |
| INSTRUMENT PANEL                                  | 72          |
| DUAL CLUTCH - LUK TYPE                            | 74          |
| DUAL CLUTCH - O.M.G.                              | 76          |
| CLUTCH CONTROL                                    | 78          |
| CENTRE AXLE HOUSING AND TRANSMISSION HOUSING      | 82          |
| SYNCHRO-MESH TRANSMISSION                         | 86          |
| REDUCER   | 90          |
| REDUCER CONTROL                                   | 92          |
| CONTROLS AND TRANSMISSION LEVERS                  | 94          |
| POWER TAKE OFF - STANDARD                         | 96          |
| POWER TAKE OFF - 540/750/1000 R.P.M.              | 98          |
| DIFFERENTIAL                                      | 102         |
| DIFFERENTIAL LOCK                                 | 104         |
| REAR AXLE-HOUSING                                 | 106         |
| BRAKE AND CONTROLS                                | 108         |
| HAND BRAKE  | 112         |
| HAND BRAKE  | 114         |
| BRAKE PUMP  | 118         |
| BRAKE CYLINDER                                    | 120         |
| HYDRAULIC TRAILER BRAKING SYSTEM                  | 122         |
| RIM & TIRES                                       | 124         |
| FRONT AXLE  | 128         |
| STEERING HYDRAULIC EQUIPMENT                      | 130         |
| STEERING HYDRAULIC EQUIPMENT                      | 133A        |
| STEERING CONTROL VALVE                            | 134         |
| STEERING CONTROL VALVE                            | 136         |
| STEERING PUMP                                     | 138         |
| STEERING PUMP - TUROLLA                           | 139A        |
| STEERING CYLINDER                                 | 140         |
| STEERING CYLINDER                                 | 142         |
| STEERING CYLINDER                                 | 144         |
| STEERING CYLINDER                                 | 146         |

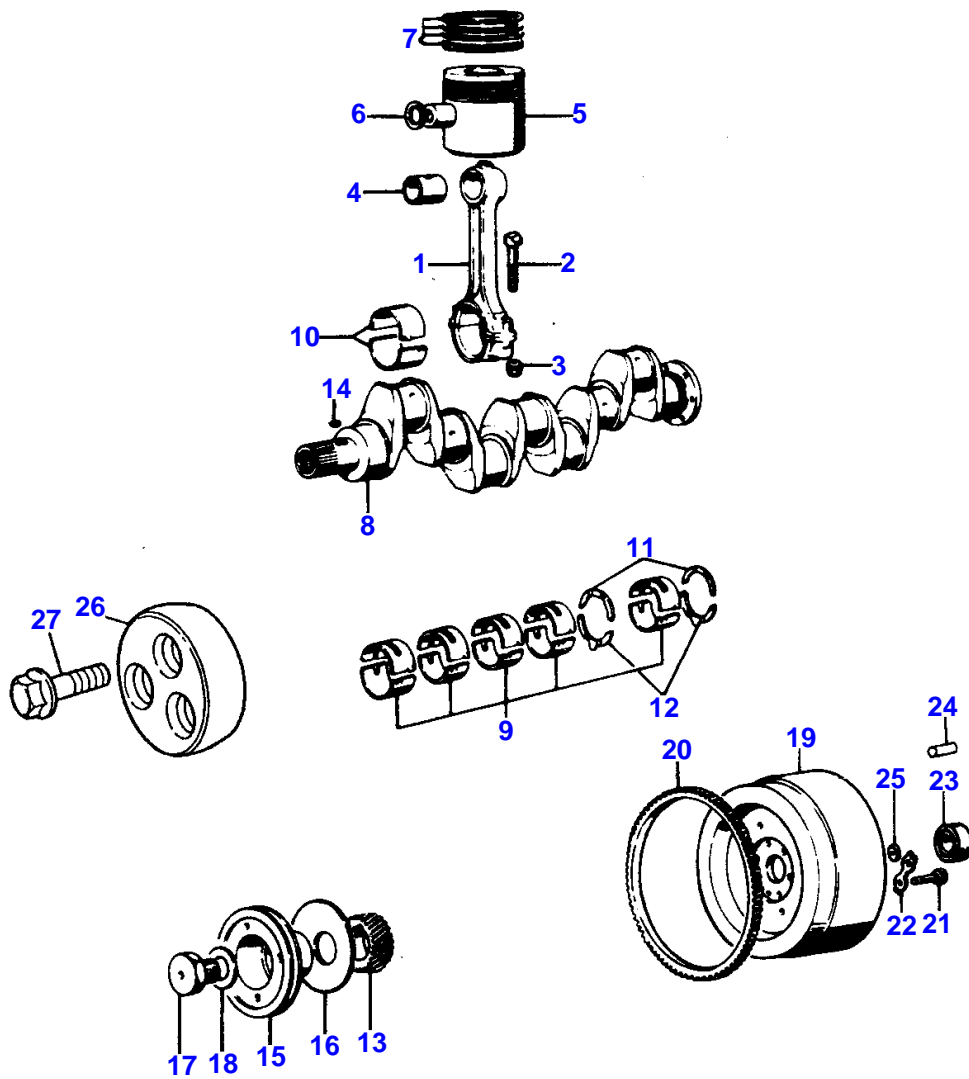
TABLE OF CONTENT

|  |      |
|--|------|
| STEERING CYLINDER                              | 148  |
| HYDRAULIC LIFT PIPINGS                         | 150  |
| PIPINGS AUXILIARY CONTROL VALVES - TANDEM PUMP | 151A |
| PIPINGS AUXILIARY CONTROL VALVES - TANDEM PUMP | 151E |
| OIL PUMP - HYDRAULIC LIFT                      | 152  |
| OIL PUMP - HYDRAULIC LIFT                      | 153A |
| HYDRAULIC CONTROL VALVE - HYDRAULIC LIFT       | 154  |
| HYDRAULIC LIFT                                 | 156  |
| LIFT CONTROL                                   | 160  |
| LIFT CONTROL                                   | 163A |
| PIPINGS AUXILIARY CONTROL VALVES               | 164  |
| ADDITIONAL POWER OUTLET UNIT                   | 166  |
| AUXILIARY HYDRAULICS VALVE - STANDARD          | 168  |
| AUXILIARY HYDRAULIC VALVES - STANDARD          | 170  |
| AUXILIARY HYDRAULIC VALVES - FLOATING          | 172  |
| AUXILIARY HYDRAULICS VALVE - FLOATING          | 174  |
| VALVES - HYDRAULICS EQUIPMENT                  | 176  |
| LINKAGE  | 178  |
| LINKAGE  | 182  |
| LINKAGE CAT. II                                | 187A |
| LINKAGE CAT 2 - TYPE JAPAN                     | 187E |
| LINKAGE CAT 2 - WITH STABILIZERS               | 188  |
| REAR HOOK                                      | 194  |
| REAR HOOK                                      | 196  |
| DRAWBAR  | 198  |
| MOUNTING FRAME AND FRONT WEIGHTS               | 200  |
| HARDNOSE AND GRILLES                           | 202  |
| ENGINE HOOD                                    | 204  |
| HOOD BRACKET AND INSTRUMENT PANEL              | 206  |
| FENDERS AND PLATFORM                           | 208  |
| FENDER   | 211A |
| FENDERS - FRONT                                | 212  |
| SEAT   | 214  |
| SEAT   | 216  |
| SAFETY FRAME                                   | 218  |
| SAFETY FRAME                                   | 220  |
| DECAL AND EMBLEMS                              | 222  |
| TRANSFER GEAR BOX - 4 WHEEL DRIVE              | 224  |
| TRANSFER GEAR BOX - 4 WHEEL DRIVE              | 226  |
| FRONT AXLE - HOUSING - DIFFERENTIAL            | 228  |
| FRONT AXLE - HOUSING - DIFFERENTIAL            | 232  |
| FRONT AXLE                                     | 236  |
| TOOL GROUP                                     | 238  |

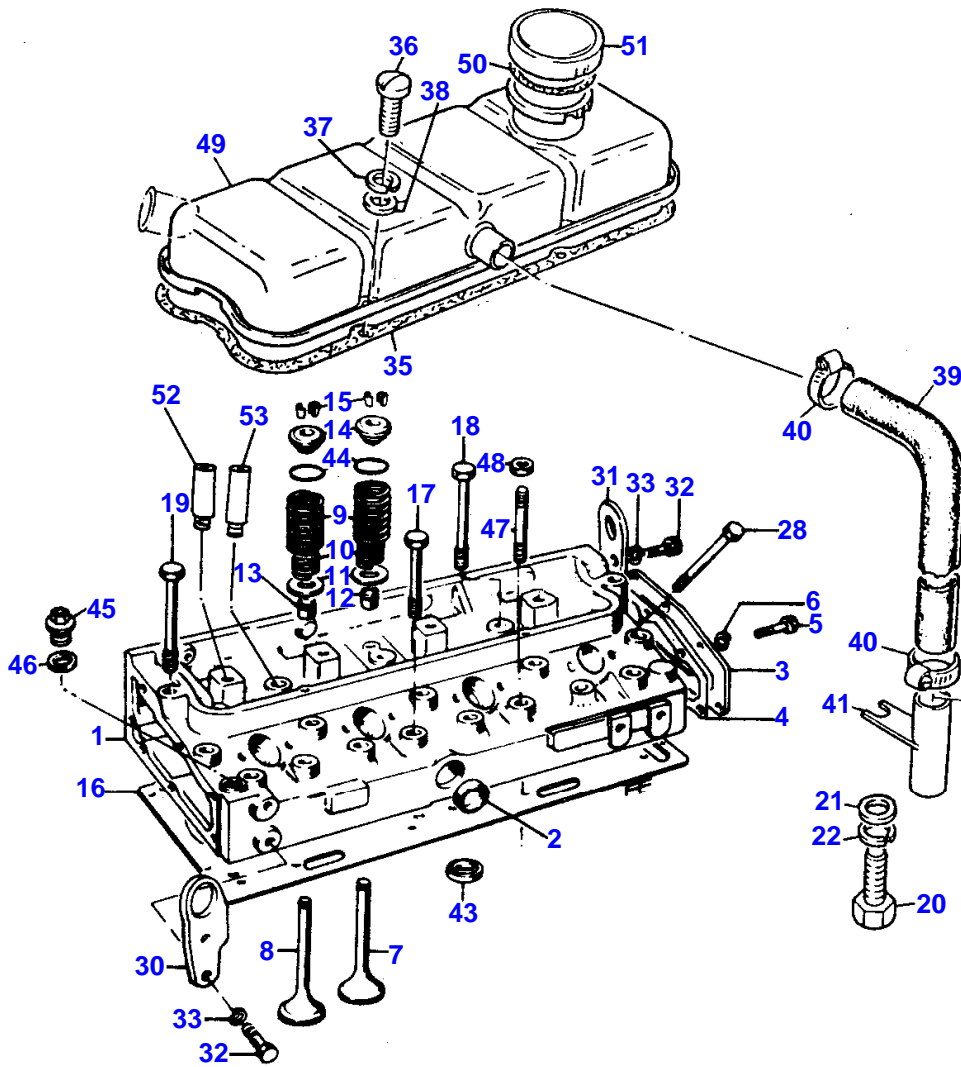
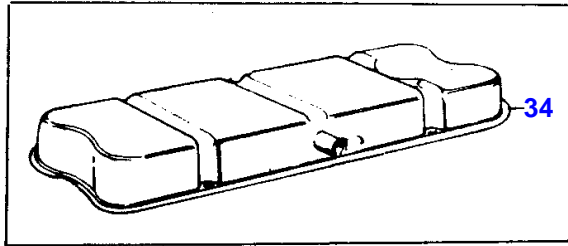


| Item | Part Number | Qty | Description     | Comments  |
|------|-------------|-----|-----------------|---|
|      |             |     |                 | A4.248  |
| 1    | ZZ50076     | 1   | Kit,Cyl.Block   | Up to Serial or Engine Number                     |
|      | ZZ50116     | 1   | Kit,Cyl.Block   | From Serial or Engine Number                      |
| 2    | 33142111    | 10  | Thimble         | 1   |
| 3    | 32166329    | 10  | Bolt            | 1   |
| 4    | 31358352    | X   | Liner           | (B)<br>Up to Serial or Engine Number U08336N      |
| 4    | 3135X034    | X   | Liner           | (B)<br>From Serial or Engine Number U08337N       |
| 4    | 31358346    | 4   | Liner           | (A)<br>Up to Serial or Engine Number U08336N      |
| 4    | 3135X033    | 4   | Liner           | 1<br>(A)<br>From Serial or Engine Number U08337N  |
| 5    | 0650618     | 4   | Plug            | 1   |
| 6    | 0650563     | 6   | Plug            | 1   |
| 7    | 0650563     | 2   | Plug            | 1   |
| 8    | 0650577     | 4   | Plug            |   |
| 9    | 0650588     | 2   | Plug            |   |
| 11   | 32417134    | 1   | Plug            |   |
| 12   | 2485A204    | 1   | Plug            | 1   |
| 13   | 32416105    | 1   | Plug            |   |
| 14   | 0650582     | 1   | Plug            |   |
| 15   | 0920130     | 1   | Washer          |   |
| 16   | 0650588     | 1   | Plug            |   |
| 17   | 32161114    | 2   | Plug            |   |
| 18   | 1423895M91  | 1   | Switch          | Up to Serial or Engine Number 140D00013/240D00123 |
|      | 1877721M92  | 1   | Pressure Switch | From Serial or Engine Number 140D00014/240D00124  |
| 19   | 31134132    | 1   | Bush            |   |
| 20   | 0350018     | 2   | Dowel           |   |
| 21   | 32526312    | 2   | Stud            |   |
| 22   | 33221316    | 2   | Nut             |   |
| 26   | 0826469     | 1   | Stud            |   |
| 27   | 0920054     | 1   | Washer          |   |
| 28   | 0576051     | 1   | Nut             |   |
| 29   | 974496M1    | 2   | Bolt            |   |
| 30   | 391414X1    | 2   | Washer          |   |
| 31   | 393643X1    | 2   | Nut Metric      |   |
| 32   | 4142V061    | 1   | Kit, Housing    |   |
| 33   | 2418F475    | 1   | Seal            |   |
| 34   | 0350009     | 2   | Dowel           |   |
| 35   | 36817157    | 1   | Joint           |   |
| 36   | 2172530     | 2   | Capscrew        |   |
| 36A  | 33112111    | 2   | Washer          |   |
| 37   | 0746211     | 10  | Bolt            |   |
| 38   | 0920003     | 10  | Washer          |   |
| 39   | 32452113    | 1   | Pointer         |   |
| 40   | 36277831    | 1   | Bridge Piece    |   |
| 41   | 32811408    | 2   | Joint           |   |
| 42   | 32517128    | 2   | Stud            |   |
| 43   | 0920053     | 2   | Washer          |   |
| 44   | 0576002     | 2   | Nut             |   |
| 45   | 2176369     | 2   | Screw           |   |
| 46   | 0920521     | 2   | Washer          |   |
| 47   | 32161114    | 2   | Plug            |   |
| 48   | 32452113    | 1   | Pointer         |   |
| 49   | 0650588     | 1   | Plug            |   |

(A)  
PRESS FITTING  
(B)  
SLIP FIT



| Item | Part Number | Qty | Description         | Comments  |
|------|-------------|-----|---------------------|---|
|      |             |     |                     | A4.248  |
| 1    | ZZ90009     | 4   | Kit, Conrod         | Repairs and replaces M7BJ0015   |
| 2    | 32762144    | 8   | Bolt                |   |
| 3    | 33221328    | 8   | Nut                 |   |
| 4    | 31134123    | 4   | Bush                |   |
| 5    | U5LU0005    | 4   | Kit, Piston         | (B)   |
|      | U5LP0009    | 4   | Kit, Piston         | (C)   |
| 6    | 0170002     | 8   | Circlip             | 5   |
| 7    | 41158022    | 4   | Kit, Piston<br>Ring |   |
| 8    | U5BG0024    | 1   | Kit, Crankshaft     |   |
| 9    | 81558       | 1   | Kit, Bearing        | (A)<br>8  |
| 9    | 81558A      | X   | Kit, Bearing        | (A)<br>Thickness -0,254MM.  |
| 9    | 81558B      | X   | Kit, Bearing        | (A)<br>Thickness -0,508MM.  |
| 9    | 81558C      | X   | Kit, Bearing        | (A)<br>Thickness -0,762MM.  |
| 10   | 85042       | 1   | Kit, Bearing        | (A)<br>8  |
| 10   | 85042A      | X   | Kit, Bearing        | (A)<br>Thickness -0,254MM.  |
| 10   | 85042B      | X   | Kit, Bearing        | (A)<br>Thickness -0,508MM.  |
| 10   | 85042C      | X   | Kit, Bearing        | (A)<br>Thickness -0,762MM.  |
| 11   | 31137551    | 2   | Thrust Washer       | 8   |
|      | 31137312    | X   | Thrust Washer       | Thickness +0,178MM.   |
| 12   | 31137561    | 2   | Thrust Washer       | 8   |
|      | 31137322    | X   | Thrust Washer       | Thickness +0,178MM.   |
| 13   | 31171681    | 1   | Gear                | Number of teeth/spines 28   |
| 14   | 0500012     | 1   | Woodruff Key        |   |
| 15   | 31148792    | 1   | Pulley              |   |
| 16   | 33125416    | 1   | Washer              |   |
| 17   | 32162331    | 1   | Screw               | (E)   |
| 18   | 33125124    | 1   | Washer              | (E)   |
| 19   | 1825511M1   | 1   | Flywheel            |   |
| 20   | 0410236     | 1   | Starter Ring        |   |
| 21   | 973013M1    | 6   | Bolt                |   |
| 22   | 0921062     | 3   | Tab Washer          |   |
| 24   | 339599X1    | 1   | Bearing Ball        |   |
| 25   | 33117121    | 6   | Washer              |   |
| 26   | 3271R021    | 1   | Spacer              | (D)   |
| 27   | 32186139    | 3   | Screw               | (D)<br>(A)<br>PRE-FINISHED<br>(B)<br>UNTOPPED<br>(C)<br>PRE-TOPPED<br>(D)<br>USED ONLY WITH CRANKSHAFTS U5BG0022/U5BG0023/<br>(E)<br>USED ONLY WITH CRANKSHAFTS 68609/94434/U5BG0008/U5<br>BG0009/U5BG0019. |



CYLINDER HEAD AND COVER - A4.248

| Item | Part Number | Qty | Description    | Comments                               |
|------|-------------|-----|----------------|--|
|      |             |     |                | A4.248                                 |
| 1    | ZZ80015     | 1   | Kit, Cyl. Head | Repairs and replaces A5BD2631          |
| 2    | 0650563     | 1   | Plug           | 1                                      |
| 3    | 3621F005    | 1   | Plate          | (B)<br>Repairs and replaces 37553142   |
|      |             |     |                | 1                                      |
| 3    | 3623K007    | 1   | Plate          | (C)                                    |
|      |             |     |                | 1                                      |
| 4    | 36851409    | 1   | Joint          | (B)                                    |
|      |             |     |                | 1                                      |
| 4    | 3685R004    | 1   | Joint          | (C)                                    |
|      |             |     |                | 1                                      |
| 5    | 0746254     | 6   | Setscrew       | (B)                                    |
|      |             |     |                | 1                                      |
| 6    | 0920053     | 6   | Washer         | (B)                                    |
|      |             |     |                | 1                                      |
| 6    | 0920054     | 2   | Washer         | (C)                                    |
|      |             |     |                | 1                                      |
| 7    | 31431641    | 4   | Valve Inlet    | 1                                      |
|      | 31431401    | X   | Valve Inlet    | Thickness +0,076MM.                    |
|      | 31431402    | X   | Valve Inlet    | Thickness +0,38MM.                     |
|      | 31431403    | X   | Valve Inlet    | Thickness +0,76MM.                     |
| 8    | 31431881    | 4   | Valve Exhaust  | 1                                      |
|      | 31431882    | X   | Valve Exhaust  | Thickness +0,076MM.                    |
|      | 31431883    | X   | Valve Exhaust  | Thickness +0,38MM.                     |
|      | 31431884    | X   | Valve Exhaust  | Thickness +0,76MM.                     |
| 9    | 31745121    | 8   | Spring         | 1                                      |
| 10   | 31744131    | 8   | Spring         | 1                                      |
| 11   | 33415118    | 8   | Washer         | 1                                      |
| 12   | 33817117    | 4   | Seal           | 1                                      |
| 13   | 33817117    | 4   | Seal           | 1                                      |
| 14   | 33423147    | 9   | Cap            | 1                                      |
| 15   | 33173108    | 8   | Cotter         | (A)                                    |
|      |             |     |                | 1                                      |
| 16   | 36812349    | 1   | Head Gasket    | Up to Serial or Engine Number U08336N  |
|      | 36812352    | 1   | Head Gasket    | From Serial or Engine Number U08337N   |
| 17   | 32166339    | 8   | Screw          |  |
| 18   | 32166338    | 12  | Bolt           |  |
| 19   | 32166337    | 2   | Screw          |  |
| 20   | 0096215     | 1   | Screw          |  |
| 21   | 0920003     | 1   | Washer         |  |
| 22   | 0920053     | 1   | Washer         |  |
| 28   | 0096232     | 8   | Bolt           |  |
| 30   | 3648C004    | 1   | Plate          | Repairs and replaces 36475706          |
| 31   | 36177111    | 1   | Plate          |  |
| 32   | 0746453     | 4   | Setscrew       | (C)                                    |
| 33   | 0920054     | 4   | Washer         | (C)                                    |
| 34   | 37188549    | 1   | Cyl.Head Cover | Up to Serial or Engine Number          |
| 35   | 36811132    | 1   | Joint          |  |
| 36   | 2172513     | 4   | Screw          |  |
| 37   | 0920052     | 4   | Washer         |  |
| 38   | 0920002     | 4   | Washer         |  |
| 39   | 33872516    | 1   | Pipe           |  |
| 40   | 0180063     | 2   | Clip           |  |
| 41   | 35731144    | 1   | Union          |  |
| 43   | 33152139    | X   | Insert         |  |
| 44   | 2415B201    | 8   | O Ring         | 1                                      |
| 45   | 0650203     | 1   | Plug           | 1                                      |
| 46   | 2411157     | 1   | Washer         | 1                                      |
| 47   | 32526312    | 2   | Stud           | Up to Serial or Engine Number U874811J |
| 48   | 33221316    | 2   | Nut            | Up to Serial or Engine Number U874811J |
| 49   | 37188141    | 1   | Cyl.Head Cover | From Serial or Engine Number           |
| 50   | 24870002    | 1   | Joint          | From Serial or Engine Number           |
|      |             |     |                | 51                                     |
| 51   | 2487845     | 1   | Cap            | From Serial or Engine Number           |
| 52   | 3343F002    | 4   | Guide          | (D)                                    |
|      |             |     |                | 1                                      |
| 53   | 3343J002    | 4   | Guide          | (D)                                    |
|      |             |     |                | 1                                      |
|      |             |     |                | (A)                                    |



MASSEY FERGUSON

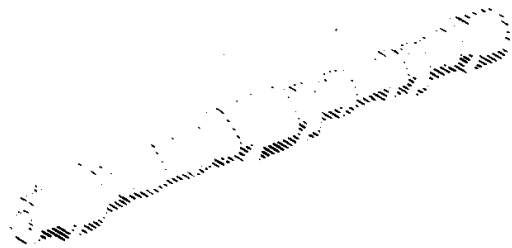
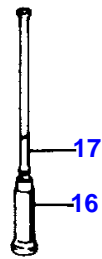
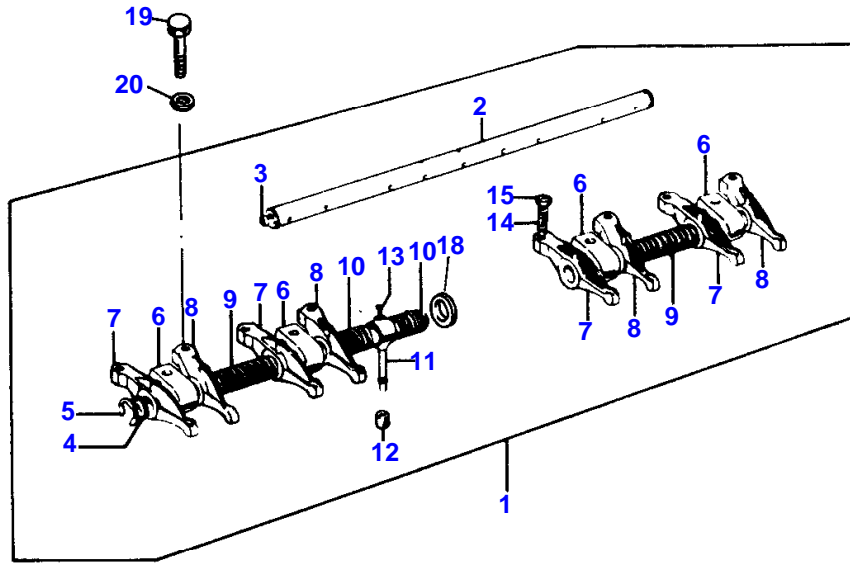
MF 194 F TRACTOR - 3310634

3310634

CYLINDER HEAD AND COVER - A4.248

8

| Item | Part Number | Qty | Description | Comments  |
|------|-------------|-----|-------------|---|
|      |             |     |             | SERVICED IN PAIR  |
|      |             |     |             | (B)   |
|      |             |     |             | USED ON CYLINDER HEADS WITH FIXING HOLES 6 OFF 5/16"                  |
|      |             |     |             | (C)   |
|      |             |     |             | USED ON CYLINDER HEADS WITH FIXING HOLES 2 OFF 3/8 " AND 4 OFF 5/16". |
|      |             |     |             | (D)   |
|      |             |     |             | USED ONLY WITH HEADS MACHINED TO ACCOMMODATE VALVE GUIDES             |



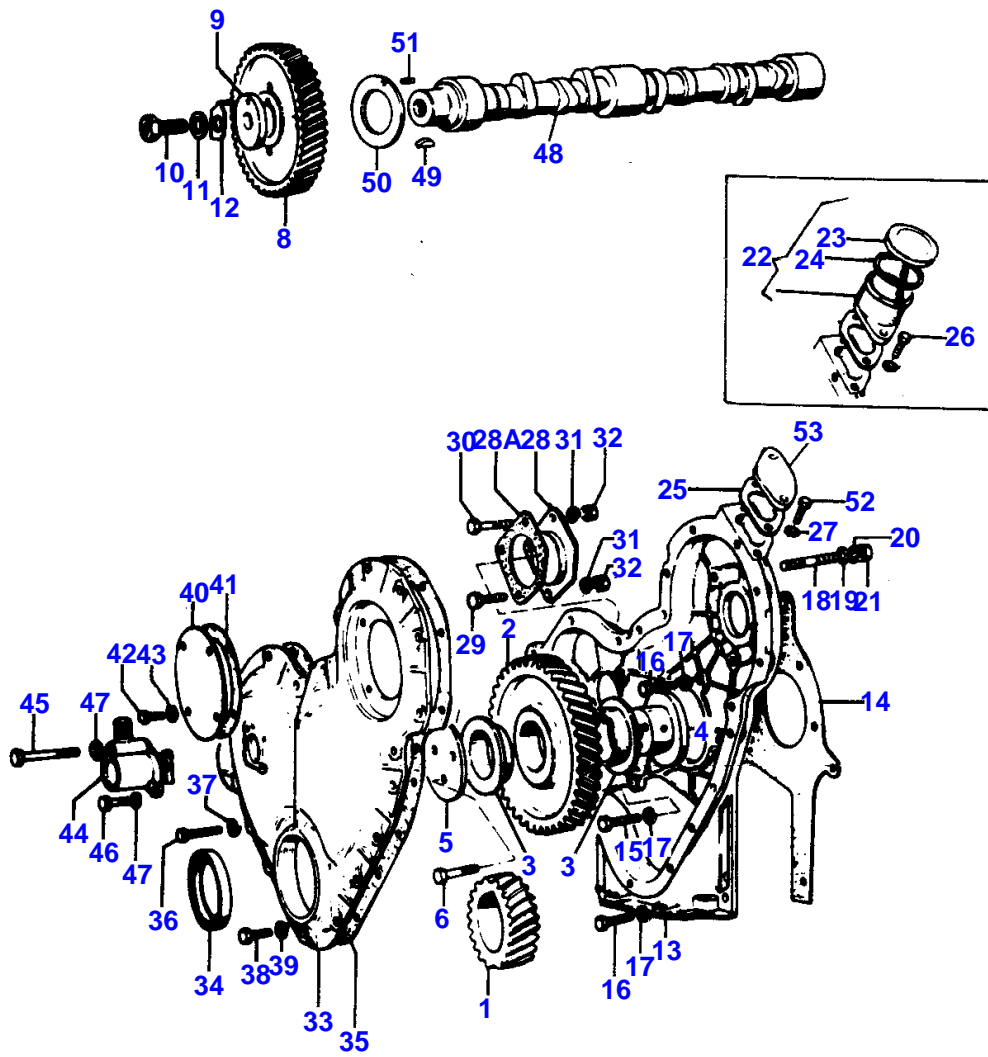
**MASSEY FERGUSON****MF 194 F TRACTOR - 3310634**

3310634

**ROCKER ARM - A4.236-A4.248**

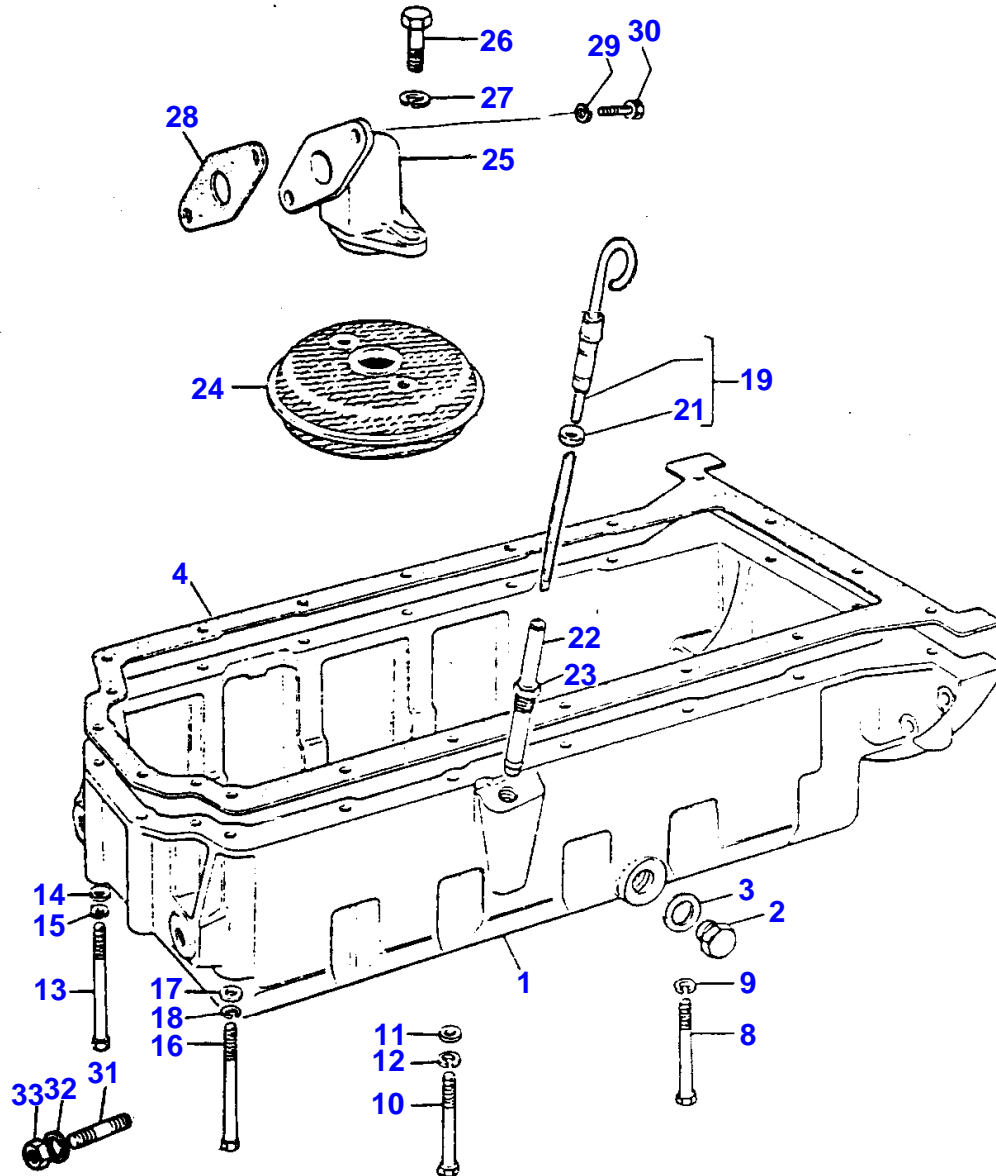
12

| Item | Part Number | Qty | Description      | Comments        |
|------|-------------|-----|------------------|-----------------|
|      |             |     |                  | A4.236-A4.248   |
| 1    | ZZ90030     | 1   | Rocker Shaft Ass |                 |
| 2    | ZZ90032     | 1   | Rocker Shaft     | 1               |
| 3    | 0650507     | 2   | Plug             | 2               |
| 4    | 33117434    | 2   | Washer           | 1               |
| 5    | 0170151     | 2   | Circlip          | 1               |
| 6    | 37521332    | 4   | Bracket          | 1               |
| 7    | 37371271    | 4   | Lever            | Left Hand<br>1  |
| 8    | 37371281    | 4   | Lever            | Right Hand<br>1 |
| 9    | 31744123    | 2   | Spring           | 1               |
| 10   | 31743108    | 2   | Spring           | 1               |
| 11   | 3775E011    | 1   | Connection       | 1               |
| 12   | 33811113    | 1   | Olive            |                 |
| 13   | 2231236     | 1   | Setscrew         | 1               |
| 14   | 0720579     | 8   | Screw            | 1               |
| 15   | 0576052     | 8   | Nut              | 1               |
| 16   | 31434163    | 8   | Tappet           |                 |
| 17   | 31434307    | 8   | Pushrod          |                 |
| 18   | 33117426    | 2   | Shim             | 1               |
| 19   | 0096634     | 4   | Screw            |                 |
| 20   | 0920006     | 4   | Washer           |                 |



TIMING GEAR - A4.236-A4.248

| Item | Part Number | Qty | Description  | Comments                              |
|------|-------------|-----|--------------|---------------------------------------|
|      |             |     |              | A4.236-A4.248                         |
| 1    | 31171681    | 1   | Gear         | Number of teeth/spines 28             |
| 2    | 41115023    | 1   | Idler        | Number of teeth/spines 63             |
| 3    | 0050345     | 2   | Bush         | 2                                     |
| 4    | 33426161    | 1   | Hub          |                                       |
| 5    | 0941082     | 1   | Plate        |                                       |
| 6    | 0096439     | 3   | Bolt         | Up to Serial or Engine Number U08336N |
|      | 2184634     | 3   | Screw        | From Serial or Engine Number U08337N  |
| 8    | 31171353    | 1   | Gear         | Up to Serial or Engine Number U08336N |
|      | 3117L011    | 1   | Gear         | From Serial or Engine Number U08337N  |
| 9    | 33153128    | 1   | Washer       |                                       |
| 10   | 32161217    | 1   | Screw        |                                       |
| 11   | 33115408    | 1   | Washer       |                                       |
| 12   | 31733121    | 1   | Washer       |                                       |
| 13   | 37161642    | 1   | Housing      |                                       |
| 14   | 36814127    | 1   | Joint        | Up to Serial or Engine Number U08336N |
|      | 36814137    | 1   | Joint        | From Serial or Engine Number U08337N  |
| 15   | 0746211     | 1   | Bolt         |                                       |
| 16   | 2183205     | 8   | Screw        |                                       |
| 17   | 0920053     | 8   | Washer       |                                       |
| 18   | 2217104     | 3   | Stud         |                                       |
| 19   | 0920003     | 3   | Washer       |                                       |
| 20   | 0920053     | 3   | Washer       |                                       |
| 21   | 0576002     | 3   | Nut          |                                       |
| 22   | 35784119    | 1   | Filler       | Up to Serial or Engine Number         |
| 23   | 2487854     | 1   | Cap          | Up to Serial or Engine Number 22      |
| 24   | 24870001    | 1   | Joint        | Up to Serial or Engine Number 23      |
| 25   | 36862138    | 1   | Joint        |                                       |
| 26   | 2183204     | 2   | Screw        | Up to Serial or Engine Number         |
| 27   | 0920053     | 2   | Washer       |                                       |
| 28   | 37556148    | 1   | Plate        |                                       |
| 28A  | 36861429    | 1   | Joint        |                                       |
| 29   | 0748505     | 1   | Screw        |                                       |
| 30   | 2232151     | 2   | Screw        |                                       |
| 31   | 0920054     | 3   | Washer       |                                       |
| 32   | 2238153     | 3   | Nut          |                                       |
| 33   | 37166401    | 1   | Cover        |                                       |
| 34   | 2418F436    | 1   | Seal         | 33                                    |
| 35   | 36813137    | 1   | Joint        |                                       |
| 36   | 2183205     | 14  | Screw        |                                       |
| 37   | 0920053     | 14  | Washer       |                                       |
| 38   | 0096238     | 4   | Bolt         |                                       |
| 39   | 2411152     | 4   | Washer       |                                       |
| 40   | 3241H004    | 1   | Plate        |                                       |
| 41   | 33825419    | 1   | Joint        |                                       |
| 42   | 2183203     | 4   | Screw        |                                       |
| 43   | 0920053     | 4   | Washer       |                                       |
| 44   | 2758346     | 1   | Angle Drive  |                                       |
| 45   | 2186106     | 1   | Screw        |                                       |
| 46   | 2183104     | 1   | Screw        |                                       |
| 47   | 0920052     | 2   | Washer       |                                       |
| 48   | 31415321    | 1   | Camshaft     | Up to Serial or Engine Number U08336N |
|      | 31415371    | 1   | Camshaft     | From Serial or Engine Number U08337N  |
| 49   | 0500012     | 1   | Woodruff Key |                                       |
| 50   | 33153121    | 1   | Washer       |                                       |
| 51   | 2116053     | 1   | Pin          |                                       |
| 52   | 2183203     | 2   | Screw        | From Serial or Engine Number          |
| 53   | 36235118    | 1   | Plate        | From Serial or Engine Number          |



**Buy Now**



Our support email:

[ebooklibonline@outlook.com](mailto:ebooklibonline@outlook.com)