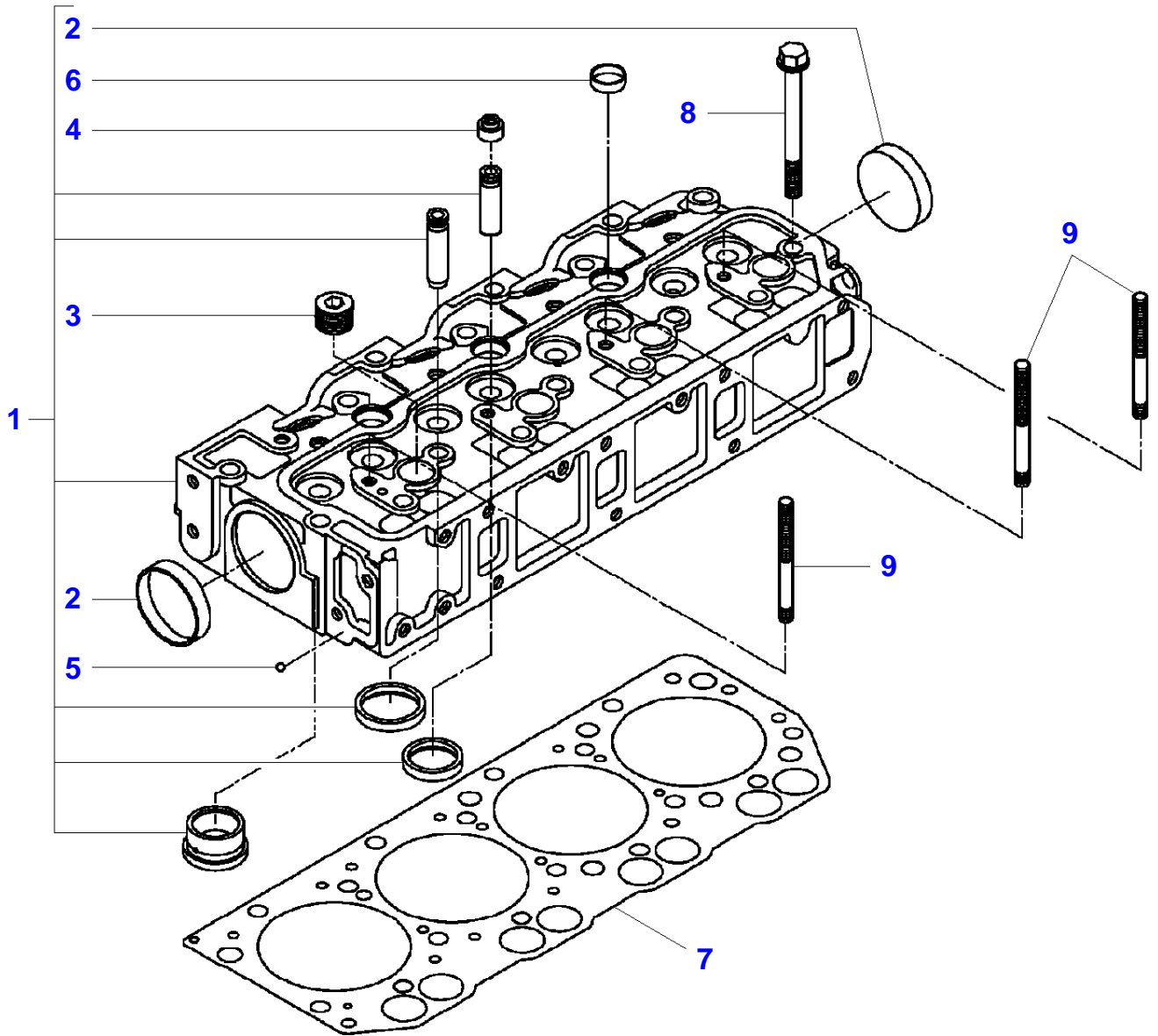


Page Number	Page Title	Page Reference
01-000-TOC	ENGINE, FUEL AND EXHAUST SYSTEM	01-000-TOC
02-000-TOC	FRAME AND SUSPENSION	02-000-TOC
03-000-TOC	DRIVE TRAIN SYSTEM	03-000-TOC
04-000-TOC	HYDRAULIC SYSTEM	04-000-TOC
05-000-TOC	ELECTRICAL SYSTEM	05-000-TOC
06-000-TOC	CAB	06-000-TOC
07-000-TOC	PLATFORM	07-000-TOC
08-000-TOC	CHASSIS	08-000-TOC
09-000-TOC	WHEELS	09-000-TOC
10-000-TOC	ACCESSORIES	10-000-TOC
11-000-TOC	GENERAL INFORMATION	11-000-TOC

Page Number	Page Title	Page Reference
01-0001	ENGINE - CYLINDER HEAD	IS01I001-1
01-0002	ENGINE - CYLINDER HEAD COVER	IS02I001-1
01-0003	ENGINE - INTAKE MANIFOLD	IS03I001-1
01-0004	ENGINE - EXHAUST MANIFOLD	IS04I001-1
01-0005	ENGINE - CYLINDER-BLOCK	IS05I001-1
01-0006	ENGINE - CONNECTING ROD BEARINGS - REPAIR KIT	IS06I001-1
01-0007	ENGINE - OIL SUMP	IS07I001-1
01-0008	ENGINE - REAR PLATE	IK79I001-1
01-0009	ENGINE - TIMING GEAR HOUSING - TYPE ENG .E4CGVB19 - E4CGVB24	IS09I001-1
01-0010	ENGINE - TIMING GEAR HOUSING - TYPE ENG. E4CGVB21 - E4CGVB23	IS09I009-1
01-0011	ENGINE - HANGER	IS10I001-1
01-0012	ENGINE - ROCKER ARM	IS11I001-1
01-0013	ENGINE - CAMSHAFT	IS12I001-1
01-0014	ENGINE - PISTON	IS13I001-1
01-0015	ENGINE - CRANKSHAFT	IS15I001-1
01-0016	ENGINE - OIL PUMP	IS16I001-1
01-0017	ENGINE - WATER PUMP	IS17I001-1
01-0018	ENGINE - FAN	IS19I001-1
01-0019	ENGINE - INJECTION SYSTEM	IS20I001-1
01-0020	ENGINE - INJECTION SYSTEM - INJECTION NOZZLE	IS20I002-1
01-0021	ENGINE - INJECTION PUMP	IS21I001-1
01-0022	ENGINE - INJECTION PUMP	IS21I002-1
01-0023	ENGINE - FUEL PIPE	IS22I001-1
01-0024	ENGINE - REPAIR KIT	IK03I001-1
01-0025	ALTERNATOR & STARTER	IS23I001-1
01-0026	ALTERNATOR - TYPE E4CGVB19 - E4CGVB21 - E4CGVB24 UPTO 6839	IS29I001-1
01-0027	ALTERNATOR - TYPE E4CGVB23 - E4CGVB24 FROM 6840	IS29I004-1
01-0028	STARTER	IS30I001-1
01-0029	ENGINE ELECTRICS	IS24I001-1
01-0030	BATTERY	IS75I001-1
01-0031	COOLING SYSTEM	IS33I001-1
01-0032	COOLING SYSTEM	IS33I013-1
01-0033	COOLING SYSTEM	IS33I002-1
01-0034	FUEL SYSTEM - FUEL TANK & ATTACHMENTS	IS35I001-1
01-0035	FUEL SYSTEM - FUEL FILTER & PIPES	IS31I001-1
01-0036	AIR FILTER	IS32I001-1
01-0037	EXHAUST	IS34I001-1
01-0038	THROTTLE CONTROL - FOR STANDARD TRANSMISSION	IS37I001-1
01-0039	THROTTLE CONTROL - FOR HYDROSTATIC TRANSMISSION	IS37I002-1
01-0040	HYDROSTATIC TRACTION DRIVE	IS87I001-1
01-0041	HYDROSTATIC TRACTION DRIVE	IS87I002-1

MF 1547 COMPACT TRACTOR
I-IS01-001-A

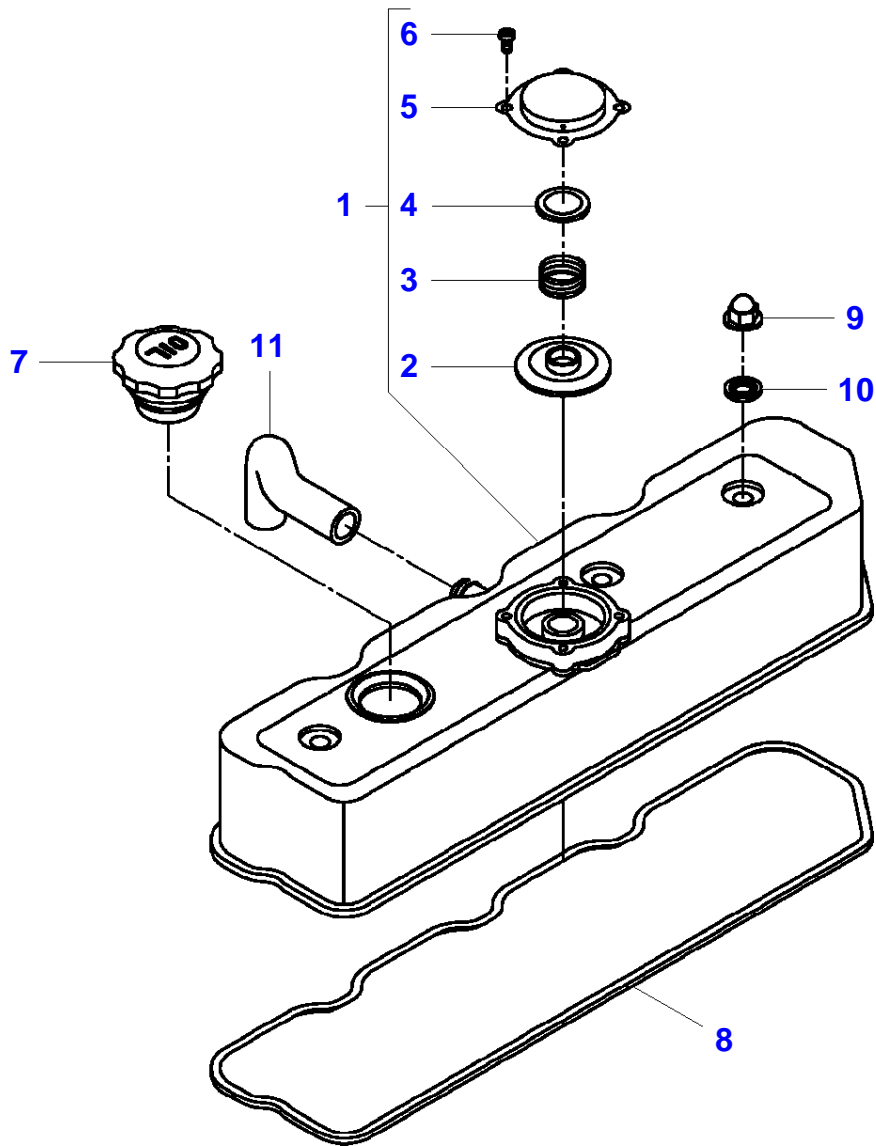
I-IS01-001-A



Item	Part Number	Qty	Description Comments	Technical Specification
1	6240833M91	1	CYLINDER HEAD	
2	3710542M1	2	SEALING CUP (1) 50 mm	?50 MM
3	3707877M2	4	PIPE PLUG (1)	1/2"
4	3710256M1	8	VALVE OIL SEAL (1)	
5	3711713M1	1	BALL (1)	
6	3710543M1	3	SEALING CUP (1) 20 mm	?20 MM
7	3607102M1	1	CYLINDER HEAD GASKET	
8	3710536M1	18	HEXAGONAL HEAD BOLT	M10 X 92 (1.25)
9	3607420M1	3	STUD BOLT	M8 X 71 (1.25)

MF 1547 COMPACT TRACTOR
I-IS02-001-A

I-IS02-001-A



Thank you so much for reading.
Please click the “Buy Now!”
button below to download the
complete manual.



After you pay.

You can download the most
perfect and complete manual in
the world immediately.

Our support email:

ebooklibonline@outlook.com