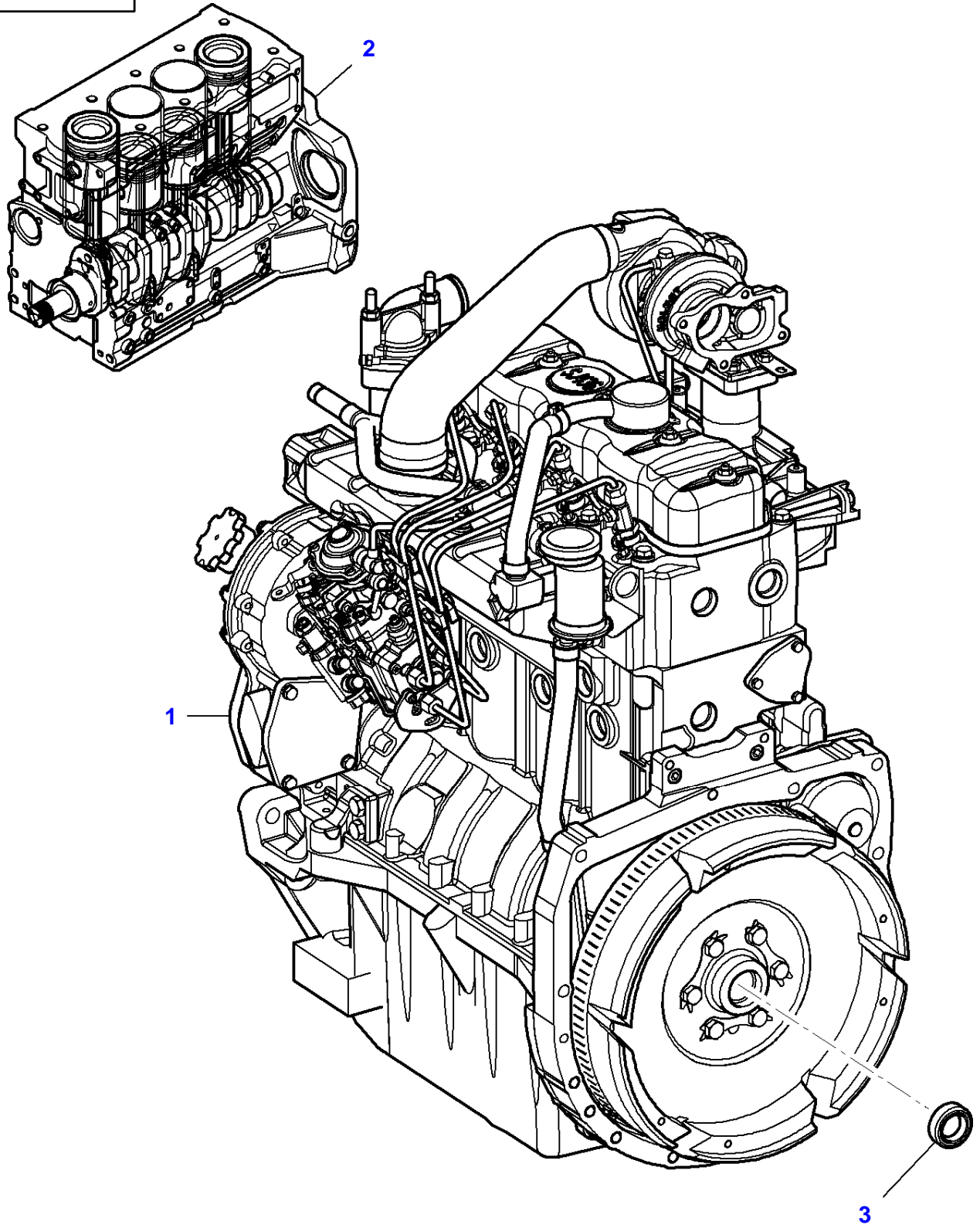


| <b>Page Number</b> | <b>Page Title</b>               | <b>Page Reference</b> |
|--------------------|---------------------------------|-----------------------|
| 01-000-TOC         | ENGINE, FUEL AND EXHAUST SYSTEM | 01-000-TOC            |
| 02-000-TOC         | FRAME AND SUSPENSION            | 02-000-TOC            |
| 03-000-TOC         | DRIVE TRAIN SYSTEM              | 03-000-TOC            |
| 04-000-TOC         | ELECTRICAL SYSTEM               | 04-000-TOC            |
| 05-000-TOC         | PLATFORM                        | 05-000-TOC            |
| 06-000-TOC         | CHASSIS                         | 06-000-TOC            |
| 07-000-TOC         | LINKAGE                         | 07-000-TOC            |
| 08-000-TOC         | GENERAL INFORMATION             | 08-000-TOC            |

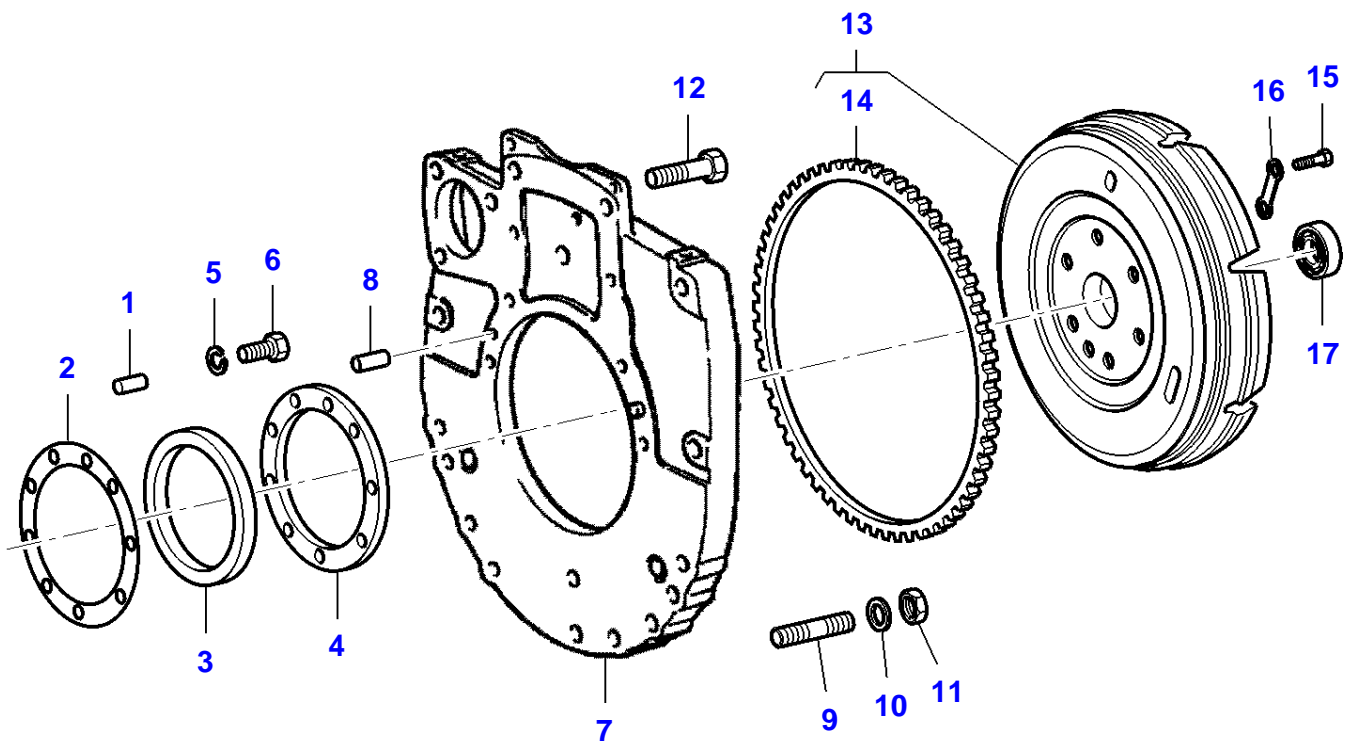
| Page Number | Page Title  | Page Reference |
|-------------|---|----------------|
| 01-0001     | ENGINE  | 00110002-1     |
| 01-0002     | FLYWHEEL  | 00950005-1     |
| 01-0003     | ENGINE - CYLINDER-BLOCK   | 05600020-1     |
| 01-0004     | CRANKSHAFT, PISTONS & PISTON ROD  | 05630012-1     |
| 01-0005     | CYLINDER HEAD   | 05660012-1     |
| 01-0006     | ENGINE - INTAKE VALVE, EXHAUST VALVE & CAMSHAFT   | 05690012-1     |
| 01-0007     | ENGINE - CYLINDER HEAD COVER  | 00850003-1     |
| 01-0008     | ENGINE - BREATHER   | 06140002-1     |
| 01-0009     | ENGINE - TIMING GEAR HOUSING  | 05720014-1     |
| 01-0010     | ENGINE - INJECTION PUMP   | 05870019-1     |
| 01-0011     | ENGINE - FEED PUMP - FUEL SUPPLY PUMP   | 05870018-1     |
| 01-0012     | ENGINE - FUEL LINE & FILTER   | 06700007-1     |
| 01-0013     | ENGINE - OIL SUMP   | 04400010-1     |
| 01-0014     | ENGINE - OIL PUMP   | 04500003-1     |
| 01-0015     | ENGINE - OIL FILTER   | 04450001-1     |
| 01-0016     | ENGINE - WATER PUMP   | 02750004-1     |
| 01-0017     | ENGINE - INTAKE & EXHAUST MANIFOLD  | 03050013-1     |
| 01-0018     | ENGINE - GASKET SET   | 06010008-1     |
| 01-0019     | ENGINE - GEAR BOX ASSEMBLING  | 07100003-1     |
| 01-0020     | ELECTRICAL EQUIPMENT  | 01500024-1     |
| 01-0021     | ALTERNATOR & BRACKET  | 01550009-1     |
| 01-0022     | ALTERNATOR  | 01600008-1     |
| 01-0023     | STARTER   | 01800004-1     |
| 01-0024     | BATTERY   | 02300009-1     |
| 01-0025     | FAN   | 02700007-1     |
| 01-0026     | COOLING SYSTEM  | 02600017-1     |
| 01-0027     | FUEL SYSTEM - TANK & ATTACHMENTS<br>UP TO MACHINE S/N<br>FV-602346  | 03850018-1     |
| 01-0028     | FUEL SYSTEM - TANK & ATTACHMENTS<br>FROM MACHINE S/N<br>FV-602347<br>UP TO MACHINE S/N<br>MEA507A1UF1037652 | 03850034-1     |
| 01-0029     | FUEL SYSTEM - TANK & ATTACHMENTS<br>FROM MACHINE S/N<br>MEA507A1UF1037653                                   | 2210011        |
| 01-0030     | FUEL SYSTEM - TANK & ATTACHMENTS<br>FROM MACHINE S/N<br>FV-602347   | 03850040-1     |
| 01-0031     | AIR FILTER  | 02900014-1     |
| 01-0032     | EXHAUST - VERTICAL  | 03200010-1     |
| 01-0033     | THROTTLE CONTROL  | 05000024-1     |
| 01-0034     | INSTRUMENT PANEL & SWITCHES   | 05150009-1     |

0-0011-002-E



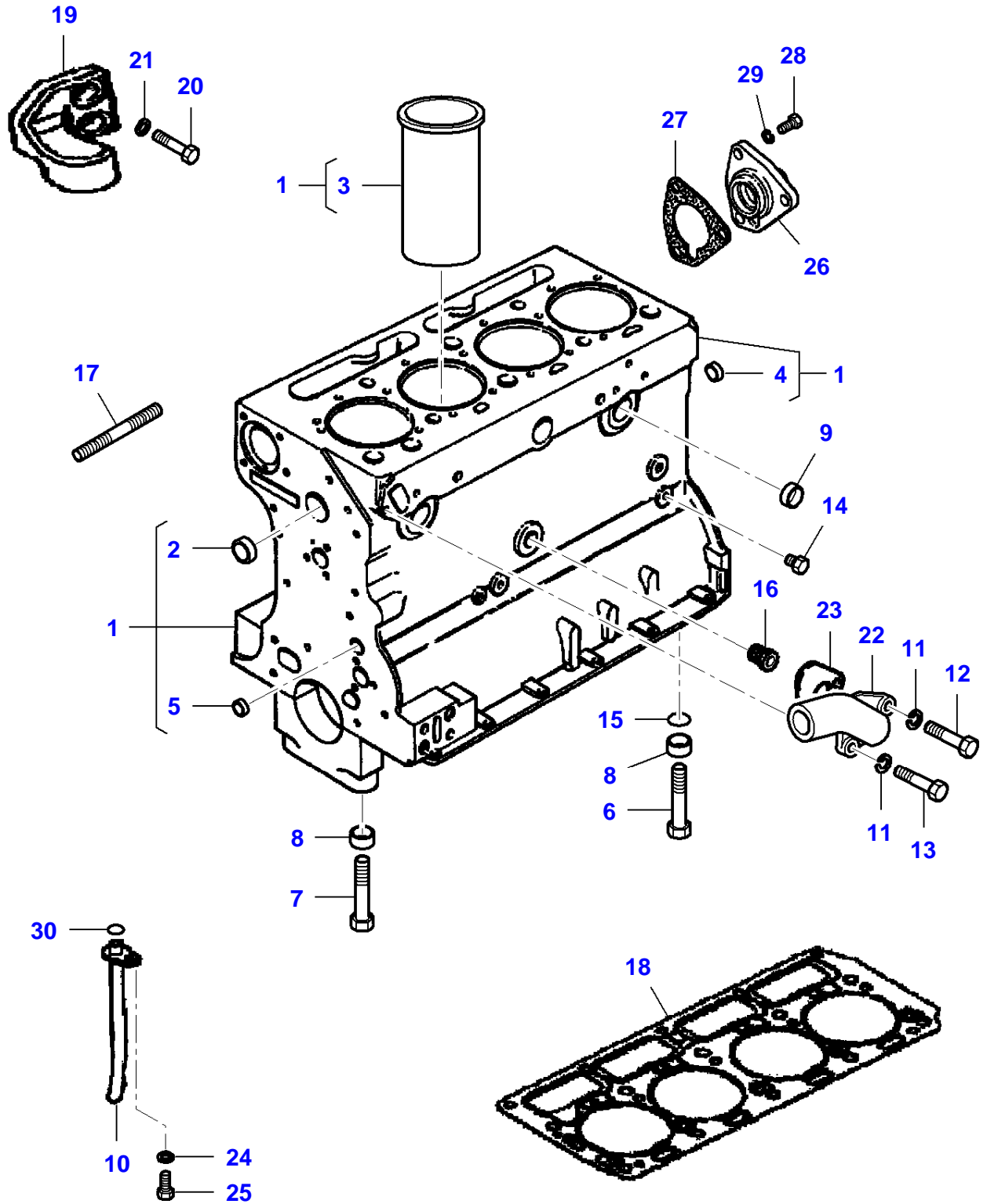
| <b>Item</b> | <b>Part Number</b> | <b>Qty</b> | <b>Description<br/>Comments</b> | <b>Technical Specification</b> |
|-------------|--------------------|------------|---------------------------------|--------------------------------|
| 1           | 2318P00401         | 1          | ENGINE                          | SJ436E 63HP-LIST N?057         |
| 2           | 3906889M91         | 1          | SHORT ENGINE                    |                                |
| 3           | NS                 | X          | NON-SERVICEABLE PART            |                                |

0-0095-005-C



| Item | Part Number | Qty | Description<br>Comments                        | Technical Specification  |
|------|-------------|-----|--|--------------------------|
| 1    | 731312M1    | 2   | DOWEL  |                          |
| 2    | 3604480M1   | 1   | JOINT  |                          |
| 3    | 3904988M1   | 1   | OIL SEAL                                       |                          |
| 4    | 3604447M1   | 1   | HOUSING  |                          |
| 5    | 353446X1    | 9   | LOCK WASHER                                    | 5/16"                    |
| 6    | 3604656M1   | 9   | HEX CAP SCREW                                  |                          |
| 7    | 3604646M1   | 1   | FLYWHEEL HOUSING                               |                          |
| 8    | 731344M1    | 2   | DOWEL  |                          |
| 9    | 3604725M1   | 6   | STUD BOLT                                      |                          |
| 10   | 3604675M1   | 6   | FLAT WASHER                                    |                          |
| 11   | 3604702M1   | 6   | LOCKNUT  |                          |
| 12   | 3604652M1   | 2   | HEX CAP SCREW                                  |                          |
| 13   | 3408364M91  | 1   | FLYWHEEL ASSY.<br>INCLUDES ITEMS<br>14         |                          |
| 14   | 731008M1    | 1   | STARTER RING<br>NUMBER OF TEETH/SPINES<br>115  |                          |
| 15   | 3604719M1   | 6   | HEX CAP SCREW                                  | M12 X 35 (1.25) ISO 10.9 |
| 16   | 731192M1    | 3   | TAB WASHER                                     |                          |
| 17   | 828123M2    | 1   | BEAR.6203 2Z<br>UP TO MACHINE S/N<br>FX-788256 |                          |
|      | 4256612M1   | 1   | BEARING<br>FROM MACHINE S/N<br>FX-788257       |                          |

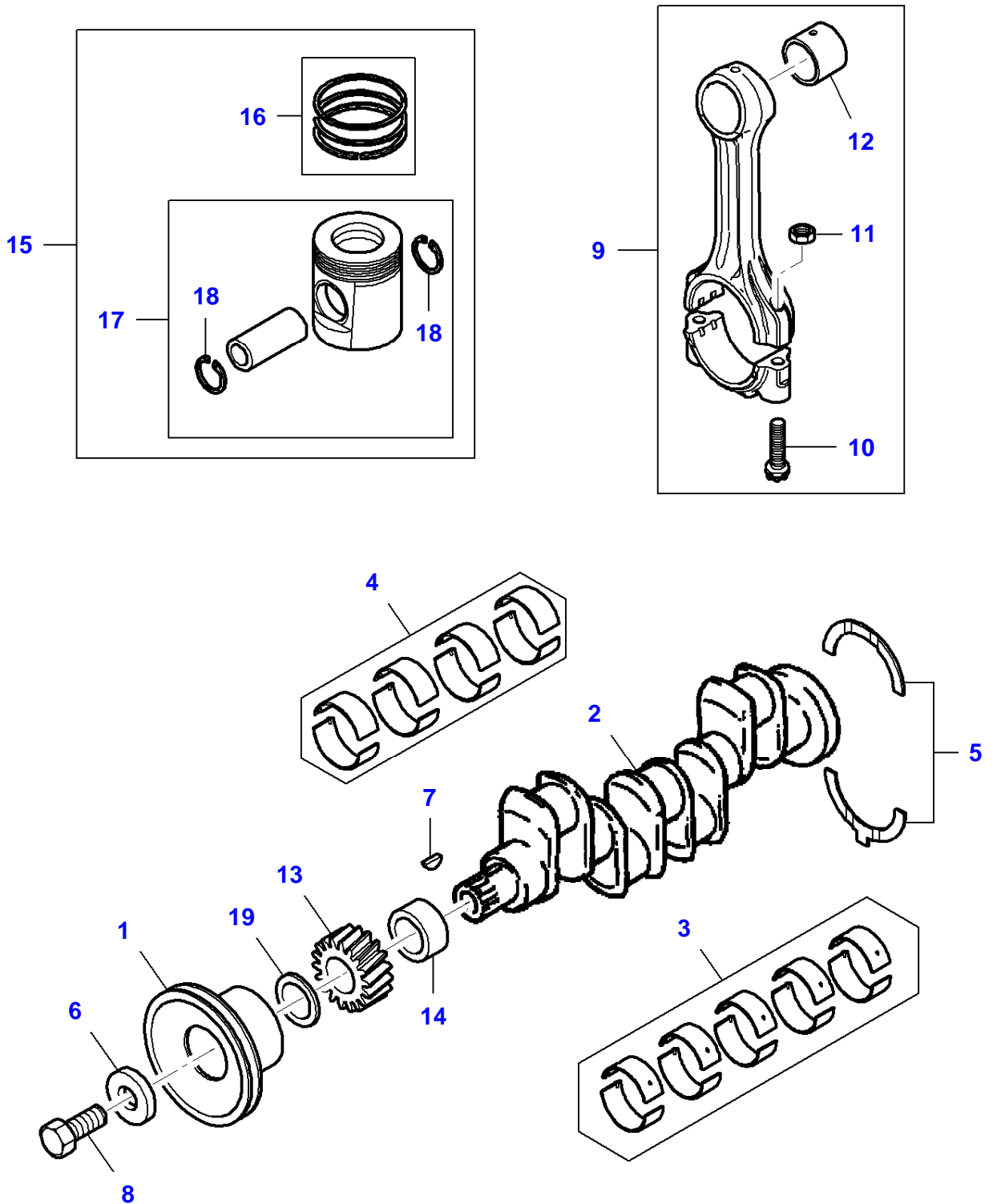
0-0560-020-B



| Item | Part Number | Qty | Description<br>Comments                          | Technical Specification |
|------|-------------|-----|--|-------------------------|
| 1    | 3906511M91  | 1   | CYLINDER-BLOCK<br>INCLUDES ITEMS<br>2-5          |                         |
| 2    | 731354M1    | 12  | PLUG   |                         |
| 3    | 3905776M1   | 4   | LINER<br>SEMI-FINISHED                           |                         |
|      | 3904972M1   | X   | LINER<br>PRE-FINISHED                            |                         |
| 4    | 731356M1    | 1   | PLUG   | ?17,6 MM                |
| 5    | 3904983M1   | 1   | PLUG   |                         |
| 6    | 3604537M1   | 2   | HEX CAP SCREW                                    |                         |
| 7    | 3604538M1   | 8   | HEX CAP SCREW                                    |                         |
| 8    | 3604536M1   | 10  | THIMBLE  |                         |
| 9    | 3904984M1   | 1   | ADAPTER  | F.3/4-14 NPSI/M 1"PTF   |
| 10   | 3906507M1   | 1   | PIPE   |                         |
| 11   | 732575M1    | 2   | LOCK WASHER                                      | 5/16"                   |
| 12   | 3905301M1   | 1   | HEX CAP SCREW                                    |                         |
| 13   | 3604656M1   | 1   | HEX CAP SCREW                                    |                         |
| 14   | 3904982M1   | 1   | PLUG   |                         |
| 15   | 1447053M1   | 2   | O RING   |                         |
| 16   | 3904945M1   | 1   | ADAPTER  |                         |
| 17   | 3905853M1   | 1   | STUD BOLT  |                         |
| 18   | 3905377M1   | 1   | CYLINDER HEAD GASKET                             |                         |
| 19   | 3905429M1   | 1   | RIGHT HAND BRACKET                               |                         |
| 20   | 3905782M1   | 2   | HEX CAP SCREW                                    |                         |
| 21   | 353439X1    | 2   | LOCK WASHER                                      | 1/2" ZN                 |
| 22   | 3906545M1   | 1   | CONNECTION<br>UP TO ENGINE NUMBER<br>SJ436 00971 |                         |
|      | 3906583M1   | 1   | CONNECTION<br>FROM ENGINE S/N<br>SJ436 00972     |                         |
|      | 3906539M1   | 1   | O RING   |                         |
| 23   | 3904965M1   | 1   | JOINT  |                         |
| 24   | 353446X1    | 1   | LOCK WASHER                                      | 5/16"                   |
| 25   | 3604656M1   | 1   | HEX CAP SCREW                                    |                         |
| 26   | 3905996M1   | 1   | PLATE  |                         |
| 27   | 3641884M1   | 1   | JOINT  |                         |
| 28   | 3604656M1   | 3   | HEX CAP SCREW                                    |                         |
| 29   | 353446X1    | 3   | LOCK WASHER                                      | 5/16"                   |
| 30   | 3904991M1   | 1   | O RING   |                         |

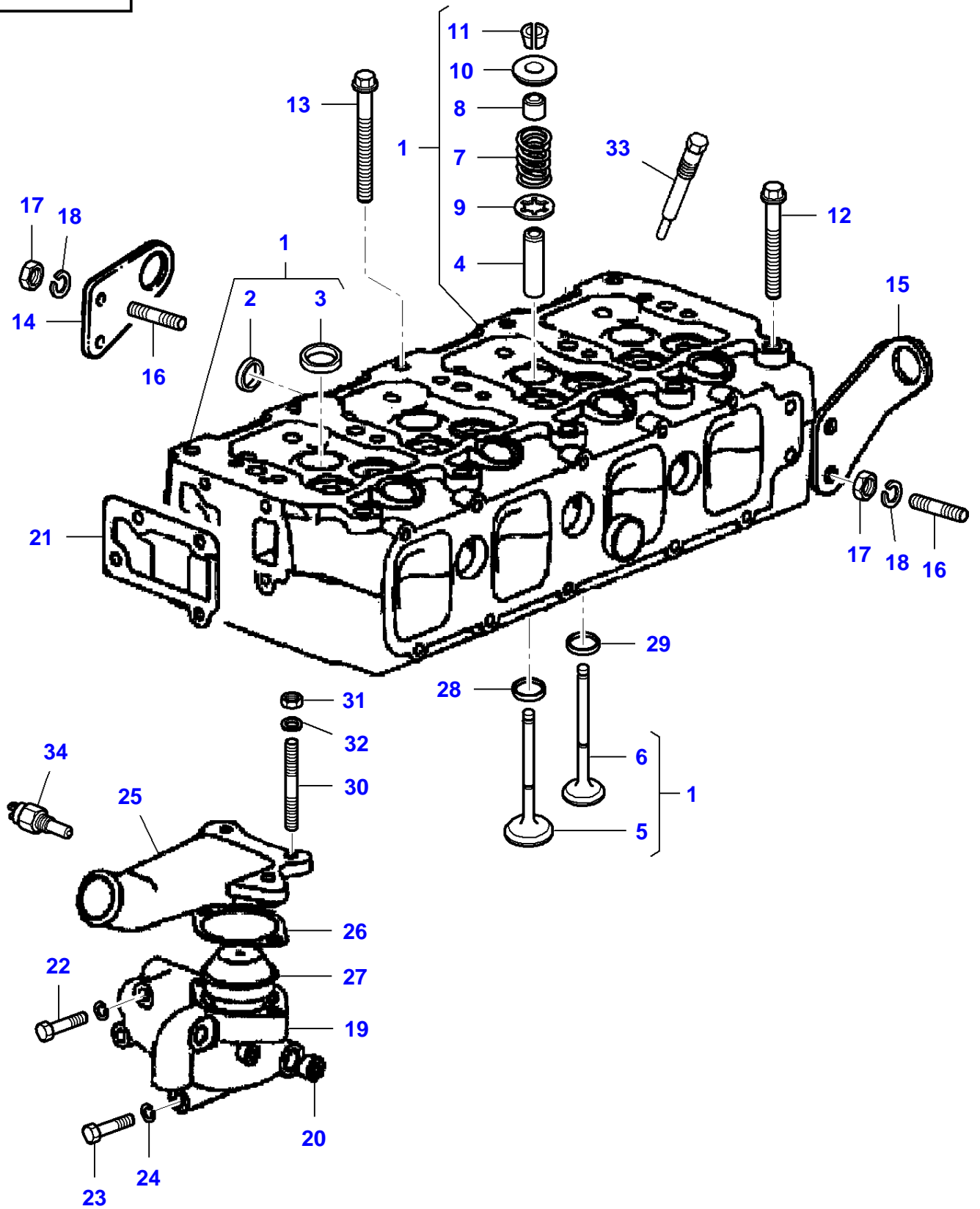


0-0563-012-E



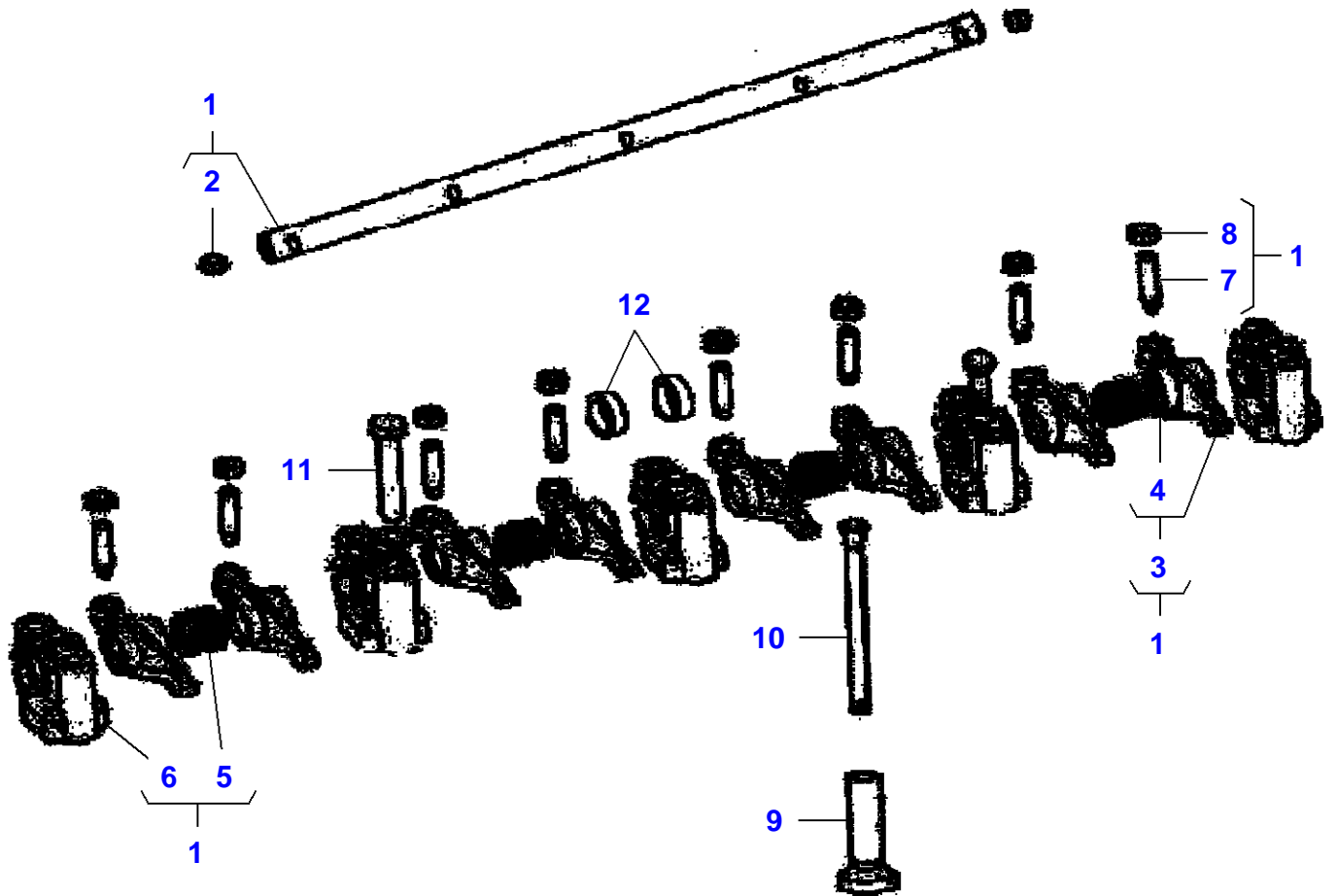
| Item | Part Number | Qty | Description<br>Comments                     | Technical Specification |
|------|-------------|-----|---|-------------------------|
| 1    | 3905512M1   | 1   | CRANKSHAFT PULLEY                           |                         |
| 2    | 3905430M1   | 1   | CRANKSHAFT                                  | S4 STD                  |
| 3    | 3905435M1   | 1   | KIT, BEARING                                | STD                     |
|      | 3905436M1   | 1   | KIT, BEARING                                | 0.010"                  |
|      | 3905437M1   | 1   | KIT, BEARING                                | 0.020?                  |
|      | 3905438M1   | 1   | KIT, BEARING                                | 0.030?                  |
| 4    | 3604433M1   | 8   | BEARING                                     |                         |
|      | 3604434M1   | 8   | BEARING                                     | S = -0.25MM/-0.010"     |
|      | 3604435M1   | 8   | BEARING                                     | S = -0.50MM/-0.020"     |
|      | 3604436M1   | 8   | BEARING                                     | S = -0.75MM/-0.030"     |
| 5    | 3604437M1   | 1   | KIT, WASHER<br>"Standard"                   |                         |
|      | 3604438M1   | 1   | KIT, WASHER<br>THICKNESS<br>(+) 0,007"      |                         |
| 6    | 731376M1    | 1   | WASHER                                      |                         |
| 7    | 731076M1    | 1   | WOODRUFF KEY                                |                         |
| 8    | 3604717M1   | 1   | HEX CAP SCREW                               |                         |
| 9    | 3604445M91  | 4   | KIT, CONROD<br>INCLUDES ITEMS<br>10-12      |                         |
| 10   | 375756X1    | 2   | HEX CAP SCREW                               |                         |
| 11   | 3639947M1   | 2   | NUT   | 7/16"-20                |
| 12   | 3604562M1   | 1   | BUSH  |                         |
| 13   | 3905292M1   | 1   | GEAR,CRANKSHAFT                             |                         |
| 14   | 3905291M1   | 1   | SPACER                                      |                         |
| 15   | 3905278M91  | 1   | KIT, PISTON/RING<br>INCLUDES ITEMS<br>16-18 |                         |
| 16   | 3905261M91  | 1   | KIT, RING                                   |                         |
| 17   | 3905406M91  | 4   | KIT, PISTON<br>INCLUDES ITEMS<br>18         |                         |
| 18   | 375709X1    | 2   | CIRCLIP                                     |                         |
| 19   | 745057M1    | 1   | WASHER                                      |                         |

0-0566-012-F



| Item | Part Number | Qty | Description<br>Comments                  | Technical Specification |
|------|-------------|-----|--|-------------------------|
| 1    | 3906951M91  | 1   | KIT, CYL. HEAD<br>INCLUDES ITEMS<br>2-11 |                         |
| 2    | 731856M1    | 3   | PLUG                                     |                         |
| 3    | 731354M1    | 9   | PLUG                                     |                         |
| 4    | 3904958M1   | 8   | GUIDE                                    |                         |
|      | ACPO300950  | X   | GUIDE                                    | PRE-FINISHED            |
| 5    | 3905252M1   | 4   | INLET VALVE                              |                         |
| 6    | 3905253M1   | 4   | EXHAUST VALVE                            |                         |
| 7    | 3904999M1   | 8   | SPRING                                   |                         |
| 8    | 3904989M1   | 8   | SEAL                                     |                         |
| 9    | 737645M1    | 8   | WASHER                                   |                         |
| 10   | 731156M1    | 8   | CAP                                      |                         |
| 11   | 731155M1    | 16  | COTTER                                   |                         |
| 12   | 3904995M1   | 10  | HEX CAP SCREW                            |                         |
| 13   | 3904996M1   | 5   | HEX CAP SCREW                            |                         |
| 14   | 3905259M1   | 1   | PLATE                                    |                         |
| 15   | 3604678M1   | 1   | PLATE                                    |                         |
| 16   | 3604724M1   | 4   | STUD BOLT                                |                         |
| 17   | 3604702M1   | 4   | LOCKNUT                                  |                         |
| 18   | 3604675M1   | 4   | FLAT WASHER                              |                         |
| 19   | 3906579M1   | 1   | BODY                                     |                         |
| 20   | 4224584M1   | 1   | PLUG                                     |                         |
| 21   | 3904964M1   | 1   | JOINT                                    |                         |
| 22   | 3604710M1   | 2   | HEX CAP SCREW                            |                         |
| 23   | 3904994M1   | 2   | HEX CAP SCREW                            |                         |
| 24   | 353446X1    | 4   | LOCK WASHER                              | 5/16"                   |
| 25   | 3906580M1   | 1   | CONNECTION                               |                         |
| 26   | 1650482M1   | 1   | JOINT                                    |                         |
| 27   | 3905283M1   | 1   | THERMOSTAT                               |                         |
| 28   | 3904959M1   | 4   | INSERT                                   |                         |
| 29   | 3904960M1   | 4   | INSERT                                   |                         |
| 30   | 3906582M1   | 2   | STUD BOLT                                |                         |
| 31   | 3604702M1   | 2   | LOCKNUT                                  |                         |
| 32   | 3604675M1   | 2   | FLAT WASHER                              |                         |
|      | 3904956M1   | 1   | SPACER                                   |                         |
| 33   | 3906517M1   | 4   | GLOW PLUG                                |                         |
| 34   | 3905285M1   | 1   | TEMPERATURE SENSOR.                      |                         |

0-0569-012-B



| Item | Part Number | Qty | Description<br>Comments               | Technical Specification |
|------|-------------|-----|---------------------------------------|-------------------------|
| 1    | 3905410M91  | 1   | ROCKER SHAFT<br>INCLUDES ITEMS<br>2-8 |                         |
| 2    | 731330M1    | 2   | PLUG                                  |                         |
| 3    | 3905263M91  | 8   | ROCKER ARM<br>INCLUDES ITEMS<br>4     |                         |
| 4    | 3904941M1   | 1   | BUSH                                  |                         |
| 5    | 3905000M1   | 4   | SPRING                                |                         |
| 6    | 3905581M1   | 5   | ROCK.ARM BRACKET                      |                         |
| 7    | 3904987M1   | 8   | GRUB SCREW                            |                         |
| 8    | 3904975M1   | 8   | LOCKNUT                               |                         |
| 9    | 3905251M1   | 8   | TAPPET                                |                         |
| 10   | 3904986M1   | 8   | ROD                                   |                         |
| 11   | 3904993M1   | 10  | HEX CAP SCREW                         |                         |
|      | 353446X1    | 10  | LOCK WASHER                           | 5/16"                   |
| 12   | 3906534M1   | 2   | SPACER                                |                         |

**Buy Now**



Our support email:

[ebooklibonline@outlook.com](mailto:ebooklibonline@outlook.com)