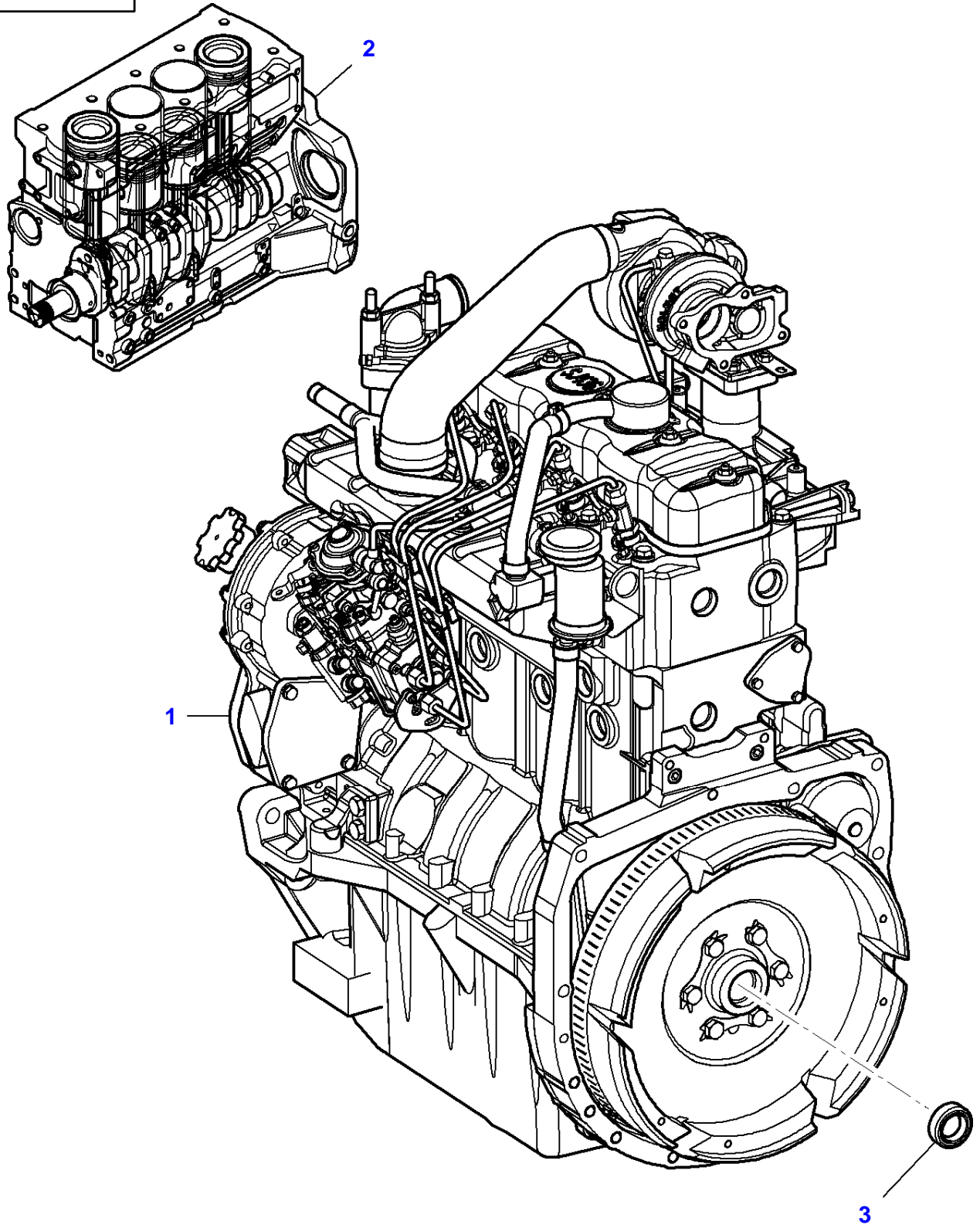


Page Number	Page Title	Page Reference
01-000-TOC	ENGINE, FUEL AND EXHAUST SYSTEM	01-000-TOC
02-000-TOC	FRAME AND SUSPENSION	02-000-TOC
03-000-TOC	DRIVE TRAIN SYSTEM	03-000-TOC
04-000-TOC	ELECTRICAL SYSTEM	04-000-TOC
05-000-TOC	PLATFORM	05-000-TOC
06-000-TOC	CHASSIS	06-000-TOC
07-000-TOC	LINKAGE	07-000-TOC
08-000-TOC	ATTACHMENTS	08-000-TOC
09-000-TOC	GENERAL INFORMATION	09-000-TOC

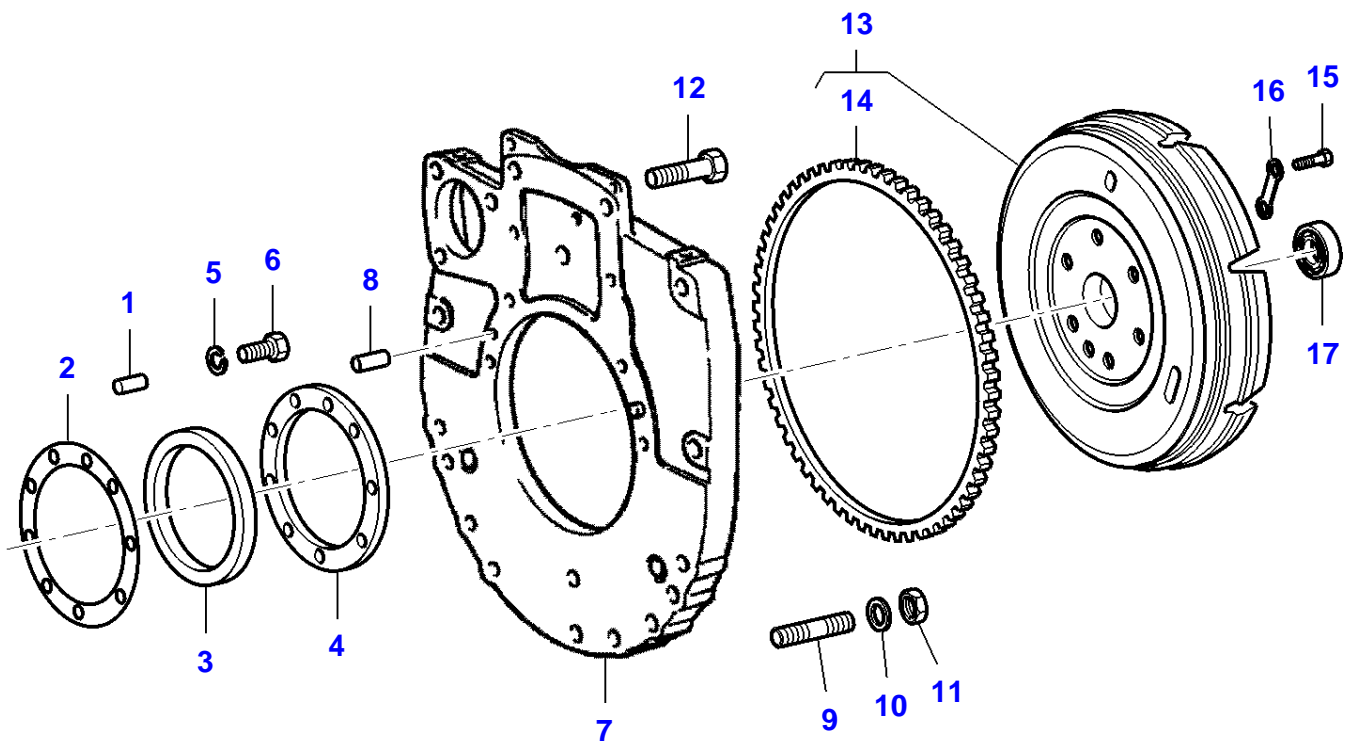
Page Number	Page Title	Page Reference
01-0001	ENGINE	00110002-1
01-0002	FLYWHEEL	00950005-1
01-0003	ENGINE - CYLINDER-BLOCK	05600016-1
01-0004	CRANKSHAFT, PISTONS & PISTON ROD	05630012-1
01-0005	CYLINDER HEAD	05660014-1
01-0006	INTAKE VALVE, EXHAUST VALVE & CAMSHAFT	05690013-1
01-0007	ENGINE - CYLINDER HEAD COVER	00850005-1
01-0008	ENGINE - TIMING GEAR HOUSING	05720016-1
01-0009	ENGINE - INJECTION PUMP	05870020-1
01-0010	ENGINE - FUEL FILTER	05880003-1
01-0011	ENGINE - OIL SUMP	04400011-1
01-0012	ENGINE - OIL PUMP	04500001-1
01-0013	ENGINE - OIL FILTER	04450001-1
01-0014	ENGINE - WATER PUMP	02750004-1
01-0015	ENGINE - INTAKE & EXHAUST MANIFOLD	03050017-1
01-0017	ENGINE - GASKET SET	1978375
01-0018	ELECTRICAL EQUIPMENT	01500025-1
01-0019	ELECTRICAL EQUIPMENT	01500026-1
01-0020	ALTERNATOR & BRACKET	01550010-1
01-0021	ALTERNATOR	01600008-1
01-0022	FAN	02700006-1
01-0023	COOLING SYSTEM	02600019-1
01-0024	FUEL SYSTEM - TANK & ATTACHMENTS	03850019-1
01-0025	FUEL SYSTEM - PIPES	03860006-1
01-0026	AIR FILTER - OIL BATH AIR FILTER	02910005-1
01-0027	EXHAUST - VERTICAL	03200007-1
01-0028	THROTTLE CONTROL	05000025-1
01-0029	INSTRUMENT PANEL & SWITCHES	05150011-1

0-0011-002-E



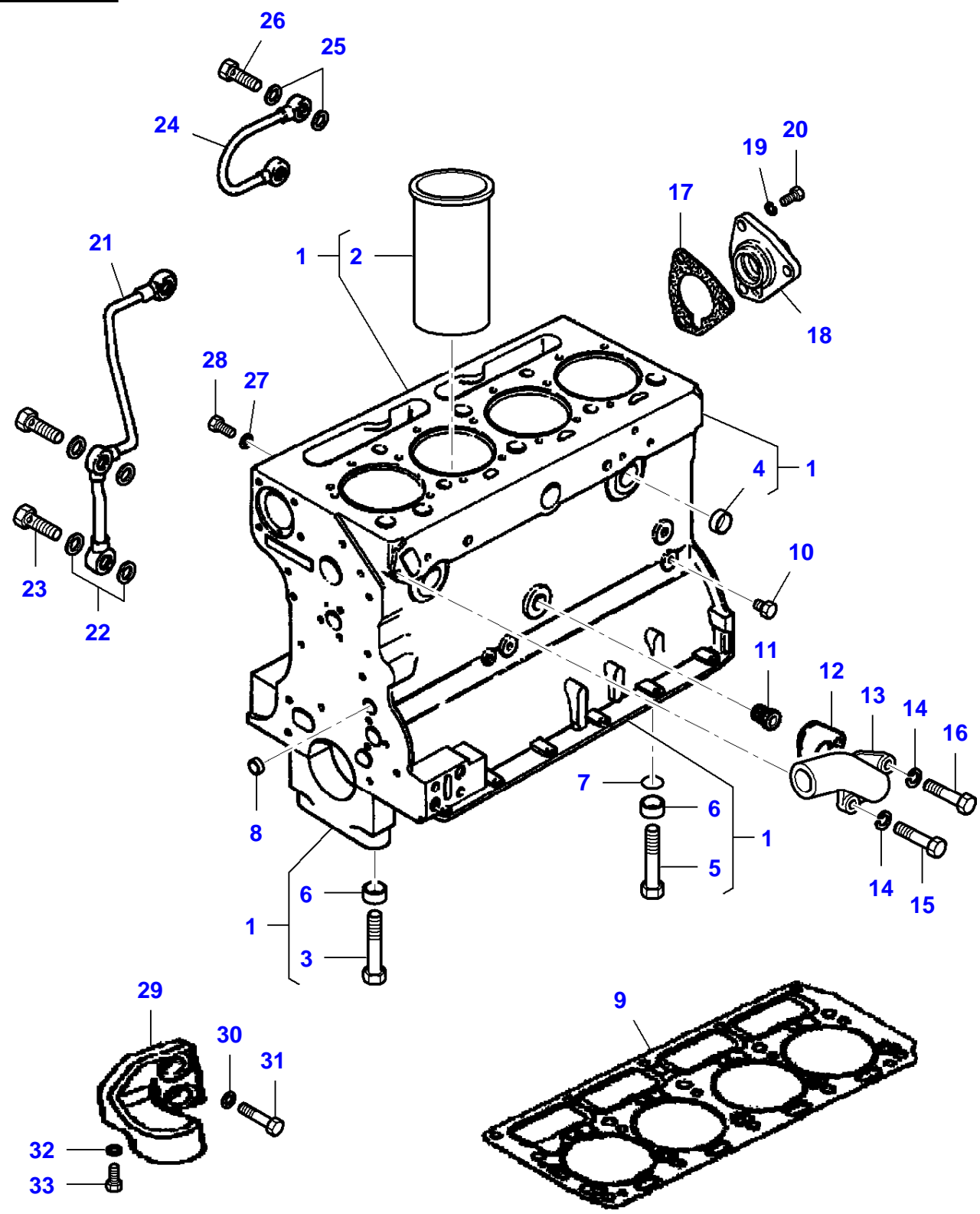
Item	Part Number	Qty	Description Comments	Technical Specification
1	4257023M91	1	ENGINE	S433 59HP-LIST N?522
2	3906949M91	1	SHORT ENGINE	
3	NS	X	NON-SERVICEABLE PART	

0-0095-005-C



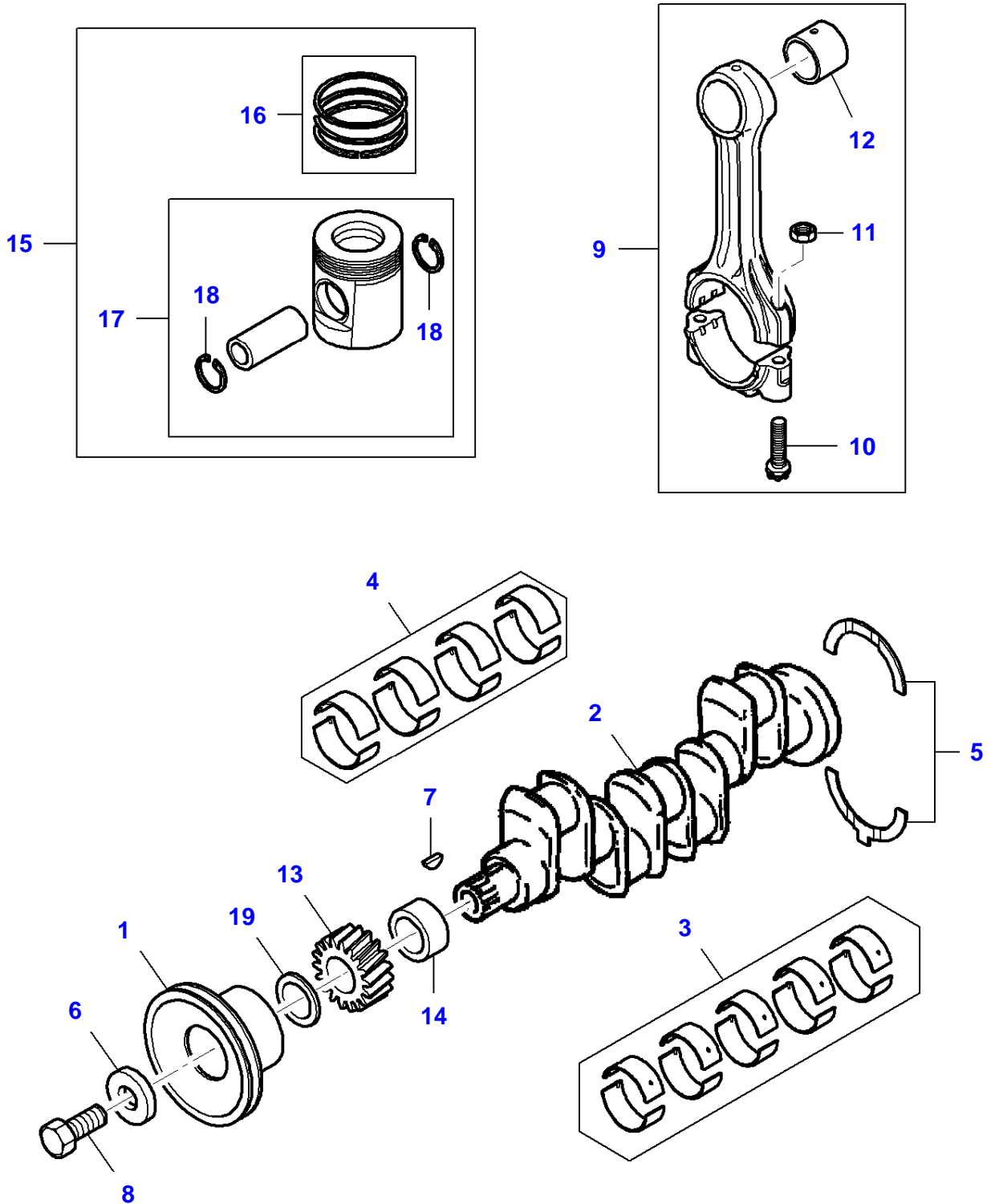
Item	Part Number	Qty	Description Comments	Technical Specification
1	731312M1	2	DOWEL	
2	3604480M1	1	JOINT	
3	3904988M1	1	OIL SEAL	
4	3604447M1	1	HOUSING	
5	353446X1	9	LOCK WASHER	5/16"
6	3604656M1	9	HEX CAP SCREW	
7	3604646M1	1	FLYWHEEL HOUSING	
8	731344M1	2	DOWEL	
9	3604725M1	6	STUD BOLT	
10	3604675M1	6	FLAT WASHER	
11	3604702M1	6	LOCKNUT	
12	3604652M1	2	HEX CAP SCREW	
13	3408364M91	1	FLYWHEEL ASSY. INCLUDES ITEMS 14	
14	731008M1	1	STARTER RING NUMBER OF TEETH/SPINES 115	
15	3604719M1	6	HEX CAP SCREW	M12 X 35 (1.25) ISO 10.9
16	731192M1	3	TAB WASHER	
17	828123M2	1	BEAR.6203 2Z UP TO MACHINE S/N FX-788256	
	4256612M1	1	BEARING FROM MACHINE S/N FX-788257	

0-0560-016-B



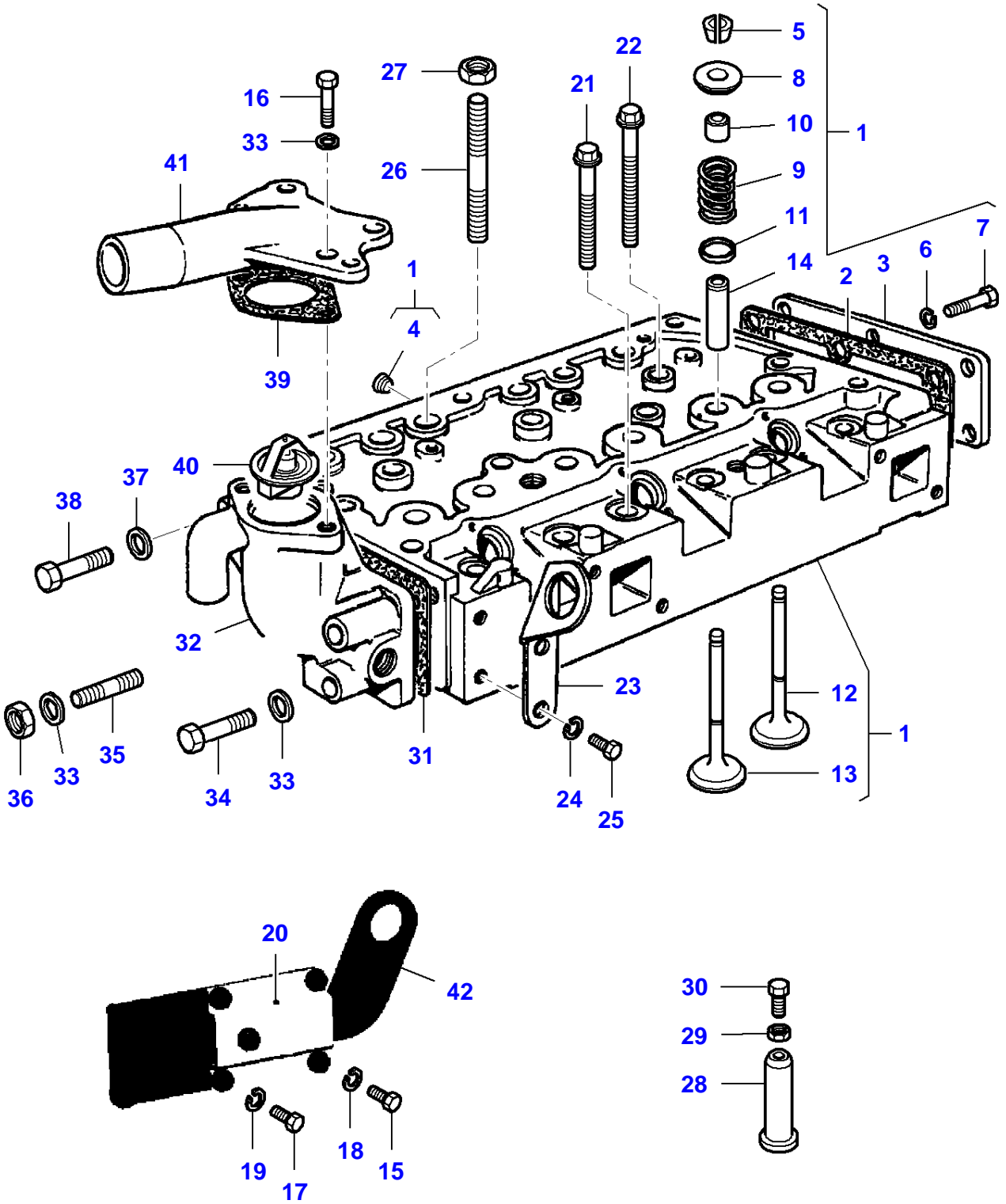
Item	Part Number	Qty	Description Comments	Technical Specification
1	3906676M91	1	CYLINDER-BLOCK INCLUDES ITEMS 2-6	
2	3604426M91	4	LINER	
3	3604538M1	8	HEX CAP SCREW	
4	731354M1	7	PLUG	
5	3604537M1	2	HEX CAP SCREW	
6	631402M1	10	THIMBLE	
7	1447053M1	2	O RING	
8	731356M1	2	PLUG	?17,6 MM
9	3906650M1	1	CYLINDER HEAD GASKET	
10	376670X1	1	PLUG	
11	3904945M1	1	ADAPTER	
12	3906646M1	1	JOINT	
13	3906634M1	1	CONNECTION	
14	732575M1	2	LOCK WASHER	5/16"
15	3604656M1	1	HEX CAP SCREW	
16	3604712M1	1	HEX CAP SCREW	
17	3641884M1	1	JOINT	
18	3604677M1	1	COVER	
19	353446X1	3	LOCK WASHER	5/16"
20	3604656M1	3	HEX CAP SCREW	
21	3906671M1	1	PIPE	
22	3604508M1	4	SEALING WASHER	
23	3604509M1	2	BANJO BOLT	
24	3906672M1	1	PIPE	
25	3604672M1	8	SEALING WASHER	
26	3604611M1	4	BANJO BOLT	M8 X 8 X 8
27	375703X1	2	FLAT WASHER	5/16"
28	3604718M1	2	HEX CAP SCREW	
29	3905429M1	1	RIGHT HAND BRACKET	
	3906630M1	1	LEFT HAND BRACKET	
30	3906621M1	4	FLAT WASHER	
31	3905434M1	4	HEX CAP SCREW	
32	353433X1	2	LOCK WASHER	5/8"
33	3905781M1	2	HEX CAP SCREW	

0-0563-012-E



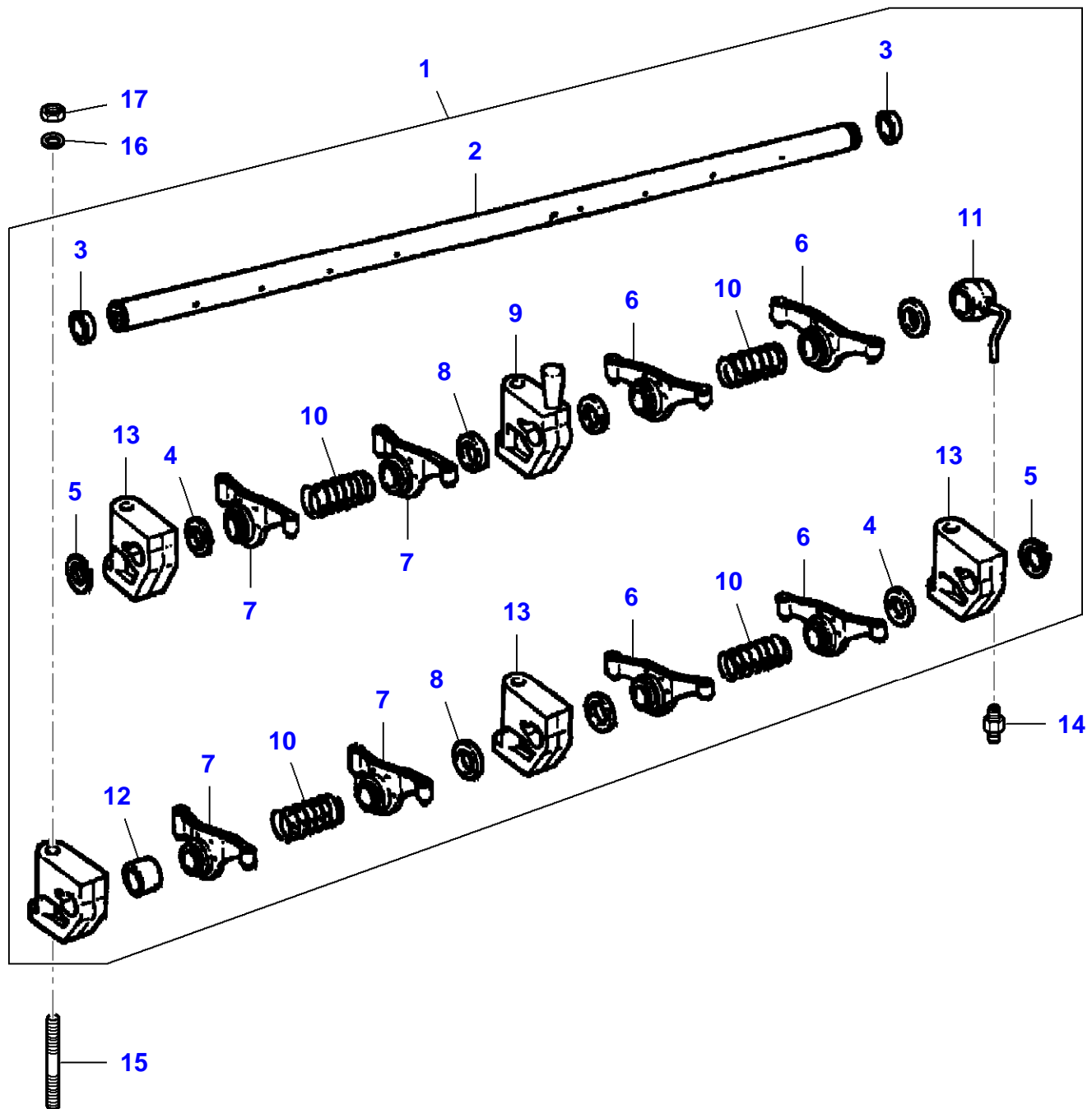
Item	Part Number	Qty	Description Comments	Technical Specification
1	3906620M1	1	CRANKSHAFT PULLEY	
2	3905430M1	1	CRANKSHAFT	S4 STD
3	3905435M1	1	KIT, BEARING	STD
	3905436M1	1	KIT, BEARING	0.010"
	3905437M1	1	KIT, BEARING	0.020?
	3905438M1	1	KIT, BEARING	0.030?
4	3604433M1	8	BEARING	
	3604434M1	8	BEARING	S = -0.25MM/-0.010"
	3604435M1	8	BEARING	S = -0.50MM/-0.020"
	3604436M1	8	BEARING	S = -0.75MM/-0.030"
5	3604437M1	1	KIT, WASHER "Standard"	
	3604438M1	1	KIT, WASHER THICKNESS (+) 0,007"	
6	731376M1	1	WASHER	
7	731076M1	1	WOODRUFF KEY	
8	3604717M1	1	HEX CAP SCREW	
9	3604445M91	4	KIT, CONROD INCLUDES ITEMS 10-12	
10	375756X1	2	HEX CAP SCREW	
11	3639947M1	2	NUT	7/16"-20
12	3604562M1	1	BUSH	
13	3905292M1	1	GEAR,CRANKSHAFT	
14	3905291M1	1	SPACER	
15	2300026S91	1	KIT, PISTON/RING INCLUDES ITEMS 16-18	
16	3604424M91	1	KIT, PISTON RING	
17	3905856M91	4	KIT, PISTON INCLUDES ITEMS 18	
18	375709X1	2	CIRCLIP	
19	745057M1	1	WASHER	

0-0566-014-B



Item	Part Number	Qty	Description Comments	Technical Specification
1	3906624M91	1	KIT, CYL. HEAD INCLUDES ITEMS 2-14	
2	731128M1	1	GASKET	
3	3604604M1	1	COVER	
4	376606X1	2	PLUG	
5	731155M1	8	COTTER	
6	353446X1	6	LOCK WASHER	5/16"
7	3604656M1	6	HEX CAP SCREW	
8	731156M1	8	CAP	
9	731154M1	8	SPRING	
10	3904989M1	8	SEAL	
11	737645M1	8	WASHER	
12	739060M1	4	INLET VALVE	
13	747581M1	4	EXHAUST VALVE	
14	3906892M1	8	VALVE GUIDE	
15	3604656M1	4	HEX CAP SCREW	
16	3604658M1	2	HEX CAP SCREW	
17	3906655M1	1	HEX CAP SCREW	
18	353446X1	4	LOCK WASHER	5/16"
19	3604675M1	1	FLAT WASHER	
20	3904933M1	1	BRACKET	
21	1476264X1	8	HEX CAP SCREW	M10 X 85
22	1476265X1	11	HEX CAP SCREW	M10 X 100
23	3906692M1	1	PLATE	
24	3604675M1	2	FLAT WASHER	
25	3906656M1	2	HEX CAP SCREW	
26	742271M1	4	STUD BOLT	7/16"-20 X 4-1/8
27	1476245X1	4	NUT	
28	731150M1	8	TAPPET	
29	376123X1	8	LOCKNUT	
30	3604586M1	8	SCREW	
31	731474M1	1	JOINT	
32	3906628M1	1	BODY	
33	3604675M1	4	FLAT WASHER	
34	3604714M1	1	HEX CAP SCREW	
35	3906658M1	1	STUD BOLT	
36	3604702M1	1	LOCKNUT	
37	353441X1	3	LOCK WASHER	1/4" ZN
38	3604708M1	3	HEX CAP SCREW	
39	4222057M1	1	JOINT	
40	3905283M1	1	THERMOSTAT	
41	3604456M1	1	CONNECTION	
42	3906662M1	1	PLATE	

0-0569-013-A



Item	Part Number	Qty	Description Comments	Technical Specification
1	3906686M91	1	ROCKER SHAFT ASM INCLUDES ITEMS 2-14	
2	3906612M1	1	ROCKER SHAFT	
3	731330M1	2	PLUG	
4	731141M1	4	SHIM	
5	375717X1	2	CIRCLIP	
6	3604439M1	4	RIGHT HAND ROCKER ARM	
7	3604440M1	4	LEFT HAND ROCKER ARM	
8	731144M1	4	SPACER	
9	3906617M1	1	BRACKET	
10	731146M1	4	SPRING	
11	3906665M1	1	PIPE	
12	731145M1	1	SPACER	
13	3604465M1	4	ROCK.ARM BRACKET	
14	3905753M1	1	UNION	
15	3604729M1	5	STUD BOLT	
16	375706X1	5	FLAT WASHER	3/8"
17	3604702M1	5	LOCKNUT	

Buy Now



Our support email:

ebooklibonline@outlook.com