

FORD
OPERATOR'S MANUAL
1700

42170011

PLEASE READ CAREFULLY:

For a complete list of the pre-delivery service checks performed by your dealer, refer to PRE-DELIVERY SERVICE on the upper portion of page 53 and 55. The copy on page 53 is your record of the service performed, and the copy on page 55, which is to be removed from the manual, is your dealer's record. MAKE SURE THAT YOU AND THE DEALER SIGN BOTH COPIES.

After you have operated your tractor for fifty hours, take this manual and your tractor to your dealer. He will then perform the factory recommended 50-HOUR SERVICE as listed on the lower portions of pages 53 and 55 — without charge — except for lubricant, oil, or filters replaced as part of normal maintenance. MAKE SURE THAT YOU AND THE DEALER SIGN BOTH COPIES.

A VEHICLE IDENTIFICATION PLATE is located on the left-hand side of the transmission housing. The numbers on the plate are important should your tractor require future service. For your convenience, have your dealer record the numbers in the appropriate spaces below.

FORD TRACTOR	
MODEL	F 1700
SERIAL NO.,	U-
ENGINE NO.,	LE892-
MADE IN JAPAN	



CONTENTS

INTERNATIONAL SYMBOLS	4
SAFETY PRECAUTIONS	5
CONTROLS AND INSTRUMENTS	6-11
SEAT, LIGHT AND ENGINE CONTROLS	6
LIGHTING	6-7
INSTRUMENT PANEL	7-8
THROTTLE CONTROLS	8
BRAKE CONTROLS	8-9
DIFFERENTIAL CONTROL	9
TRANSMISSION AND PTO CONTROLS	9-11
HYDRAULIC LIFT SYSTEM CONTROLS	11-12
OPERATION	13-22
BREAK-IN PROCEDURES	13
STARTING THE ENGINE	13-14
STOPPING THE ENGINE	14
OPERATING THE TRANSMISSION, FOUR-WHEEL DRIVE AND PTO	14-16
TOWING THE TRACTOR	16
OPERATING THE DIFFERENTIAL LOCK	16-17
OPERATING THE HYDRAULIC LIFT SYSTEM	17-19
DRIVING THE TRACTOR	19
WHEEL TREAD SETTINGS	20-21
TRACTOR WEIGHTING	21-22
TIRE PRESSURES	22
LUBRICATION AND MAINTENANCE	23-43
LUBRICATION AND MAINTENANCE CHART	23-24
TWO-WHEEL DRIVE	23
FOUR-WHEEL DRIVE	24
FUEL AND LUBRICANTS	25-27
FUEL AND LUBRICANT SERVICE PROCEDURES	27-30
GENERAL MAINTENANCE	30-41
TRACTOR STORAGE	41-42
GENERAL TORQUE SPECIFICATION TABLE	43
SPECIFICATIONS	44-47
SAFETY AND INSTRUCTION DECALS	48-50
PREDELIVERY AND 50-HOUR SERVICE	53, 55

INTERNATIONAL SYMBOLS

As a guide to the operation of your tractor, various international symbols have been utilized on the instruments and controls. The symbols are shown below with an indication of their meaning.

	Engine speed		Alternator charge
	Hours recorded		Power take-off (on)
	Engine water temperature		Power take-off (off)
	Lights		"Tortoise," slow or minimum setting
	Horn		"Hare," fast or maximum setting
	Engine oil pressure		Caution
	Safety Flasher		Control lever operating direction
	Axle connect		Rock shaft (raised)
	Axle disconnect		Rock shaft (lowered)
	Continuously variable		Remote cylinder (extended)
	Increase		Remote cylinder (retracted)
	Decrease		Differential lock

SAFETY PRECAUTIONS

A careful operator is the best operator. Most accidents can be avoided by observing certain precautions. Read and take the following precautions before operating this tractor to help prevent accidents. Equipment should be operated only by those who are responsible and instructed to do so.

THE TRACTOR

1. Read the Operator's Manual carefully before using the tractor. Lack of operating knowledge can lead to accidents.
2. Use an approved Rollbar and Seat Belt for safe operation. Overturning a tractor without a rollbar can result in death or injury. If your tractor is not equipped with a rollbar and seat belt, see your Ford Tractor Equipment Dealer.
3. Always use the seat belt when the rollbar is installed. Do not use the seat belt if the rollbar is removed from the tractor.
4. Use the handholds and step plates when mounting and dismounting the tractor to prevent falls. Keep steps and platform cleared of mud and debris.
5. Do not permit anyone but the operator to ride on the tractor. There is no safe place for extra riders.

SERVICING THE TRACTOR

6. Cooling system operates under pressure which is controlled by the radiator cap. It is dangerous to remove the cap while system is hot. Always turn cap slowly to the first stop and allow the pressure to escape before removing the cap entirely.
7. Do not smoke while refueling the tractor. Keep any type of open flame away. Wait for engine to cool before refueling.
8. Keep the tractor in good operating condition for your safety. An improperly maintained tractor can be hazardous.
9. Keep open flame away from battery or cold weather starting aids to prevent fires or explosions. Use jumper cables according to instructions to prevent sparks which could cause explosion.
10. Stop the engine before performing any service on the tractor.
11. Do not modify or alter or permit anyone else to modify or alter this tractor or any of its components or any tractor function without first consulting a Ford Tractor-Equipment Dealer.

OPERATING THE TRACTOR

12. Apply the parking brake, place the PTO lever in the "OFF" position, the lift control lever in the down position, and the transmission in neutral before starting the tractor.
13. Do not start the engine or operate controls while standing beside the tractor. Always sit in the tractor seat when starting the engine or operating controls.
14. Do not bypass the safety start switch. Consult your Ford Tractor-Equipment Dealer if your safety start controls malfunction. Use jumper cables only in recommended manner, improper use can result in tractor runaway.
15. Do not get off the tractor while it is in motion.


16. Shut off the engine and apply the parking brake before getting off the tractor.
17. Do not park the tractor on a steep incline.
18. Do not operate the tractor engine in an enclosed building without adequate ventilation. Exhaust fumes can cause death.
19. If engine ceases operating, stop the tractor immediately.
20. Pull only from the drawbar or the lower link drawbar in the down position. Use only a drawbar pin that locks in place. Pulling from the tractor rear axle or any point above the axle may cause the tractor to upset.
21. If the front end of the tractor tends to rise when heavy implements are attached to the three-point hitch, install front end or front wheel weights. Do not operate the tractor with a light front end.
22. Do not leave equipment in the raised position.
23. Use the Flasher Lights and SMV signs when traveling on public roads both day and night.
24. Be sure the lights are adjusted to prevent blinding an oncoming vehicle operator.

DRIVING THE TRACTOR

25. Watch where you are going especially at row ends, on roads, around trees and any low hanging obstacle.
26. To avoid upsets drive the tractor with care and at speeds compatible with safety, especially when operating over rough ground, crossing ditches, slopes, and when turning.
27. Lock tractor brake pedals together when transporting on roads to provide two wheel braking.
28. Keep the tractor in the same gear when going downhill as used when going uphill. Do not coast or free wheel down hills.
29. Any towed vehicle whose total weight exceeds that of the towing tractor must be equipped with brakes for safe operation.
30. When the tractor is stuck or tires frozen to the ground, back out to prevent upset.

OPERATING THE PTO

31. When operating PTO driven equipment, shut off the engine and wait until the PTO stops before getting off the tractor and disconnecting the equipment.
32. Do not wear loose clothing when operating the power take-off, or when near rotating equipment.
33. When operating stationary PTO driven equipment, always apply the tractor parking brake and block the rear wheels front and back.
34. To avoid injury, do not clear, adjust, unplug or service PTO driven equipment when the tractor engine is running.
35. Make sure the PTO master shield is installed at all times and always replace the PTO shaft cap when the PTO is not in use.

Whenever you see this symbol  it means:

ATTENTION! BECOME ALERT! YOUR SAFETY IS INVOLVED!

CONTROLS AND INSTRUMENTS

SEAT, LIGHT, AND ENGINE CONTROLS

TRACTOR SEAT

Your Ford 1700 Tractor is equipped with a molded cushion seat as shown in Figure 1. The seat is adjustable to obtain the most comfortable position. It can be moved closer to or farther from the steering wheel by loosening the attaching bolts, and repositioning the seat as desired, Figure 2. Two additional inches of adjustment can be obtained by removing the bolts and relocating in alternate holes in seat attachment plate.

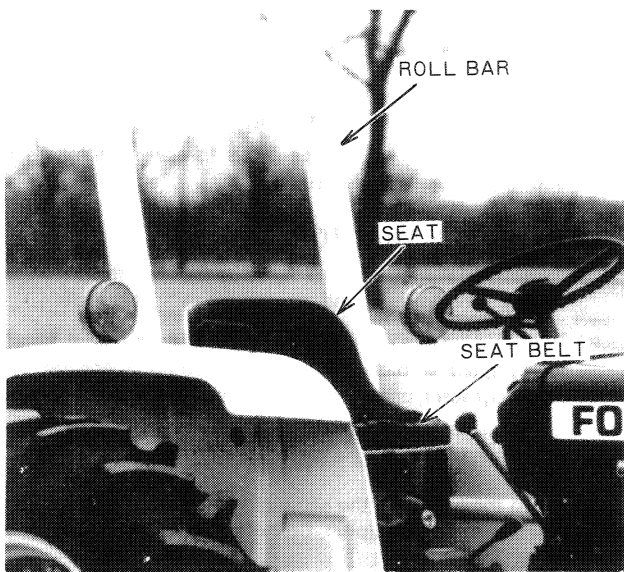


Figure 1 — Tractor Seat, Roll Bar and Seat Belt

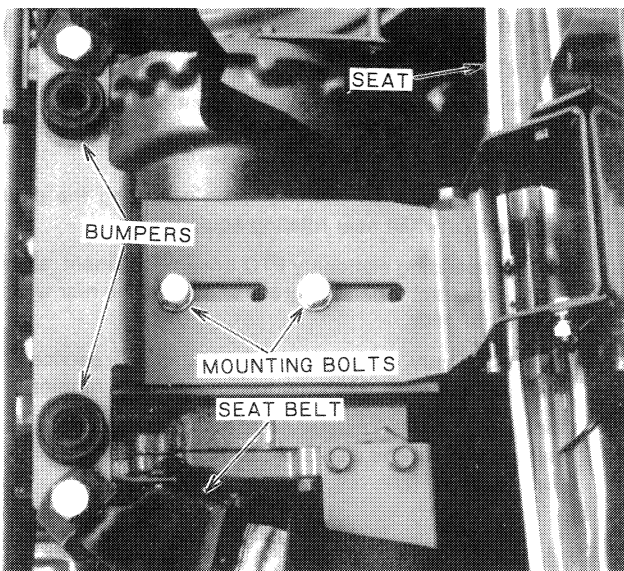


Figure 2 — Tractor Seat Adjustment

SAFETY ROLL BAR AND SEAT BELT

The safety offered by the roll bar and seat belt is minimized if your seat belt is not buckled. Always use your seat belt — they save lives.



CAUTION: Never attach chains, ropes, or cables to the roll bar for pulling purposes; this is very dangerous, as the tractor will tip backward. Always pull from the tractor drawbar.

Be careful when driving through door openings or under low overhead objects. Make sure there is sufficient clearance for the roll bar to clear the structure or object.

ADJUSTING THE SEAT BELT

To lengthen the belt, tip the buckle end down and pull on the buckle until the ends can be joined.

To shorten the belt, buckle it, then pull on the loose end until the belt is snug.

If the seat belt is to be cleaned, use soap and water. Do not use carbon tetrachloride, naphtha, etc., as these will weaken the webbing. For the same reason, do not bleach or redye the webbing. Replace seat belt if worn or damaged.

LIGHTING

FLASHER WARNING LAMP

Your Ford tractor is equipped with flasher warning lamps, Figure 3. The switch for the warning lamps is located on the right side of the instrument panel.

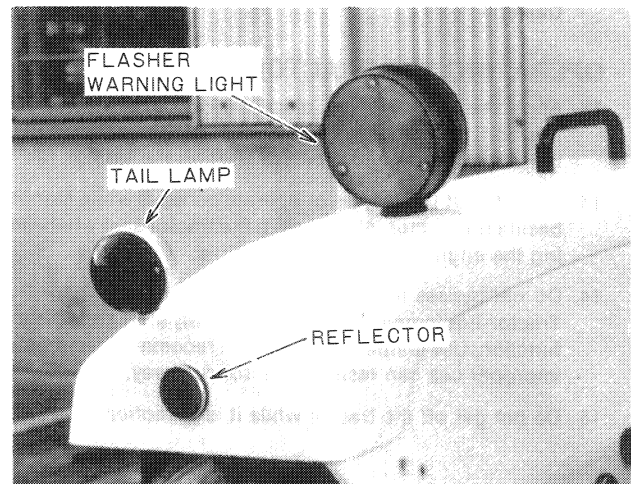


Figure 3 — Flasher Warning Lamp

CONTROLS AND INSTRUMENTS

The light switch must be in the "ON" positions before the flasher will operate.

For your protection, use the flasher warning lamp when traveling on public roads, day or night.

LIGHT SWITCH

The light switch, shown in Figure 4, is a push-pull type switch. Its positions are:

Full in	Off
Intermediate	Headlights (high beam), Instruments, and Tail Lamp
Full out	Headlights (low beam), Instruments, and Tail Lamp

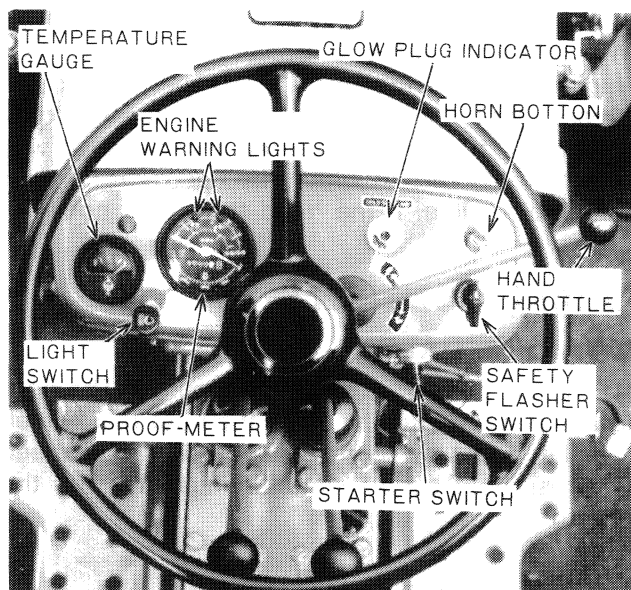


Figure 4 — Instrument Panel

INSTRUMENT PANEL

STARTER SWITCH

The starter switch is shown in Figure 4. Turning the key to the left will activate the cold-start plug. Turning the key to the right to the "on" position will activate the warning lights and instruments. Turning the key further right to the "start" position will start the engine. Upon release, the key will spring return to the "on" position.

The starting circuit can only be activated when the clutch is fully depressed. Always check to make certain the transmission main shift lever and PTO lever are in neutral before attempting to start the engine. Refer to page 13 for complete starting instructions.

IMPORTANT: The starter switch must remain in the ON position while operating the engine. The warning lights and battery charging system will not function with the switch in the OFF position.

FUEL GAUGE

The fuel gauge is shown in Figure 5. The amount of fuel in the gauge indicates the amount of fuel in the tank. If the fuel level is at the lowest point, the tank is empty.

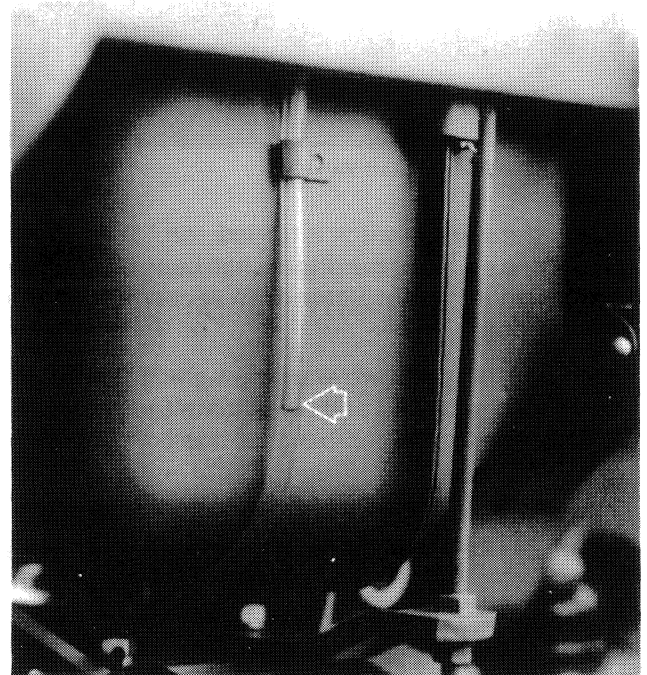


Figure 5 — Fuel Gauge

FUEL SHUTOFF VALVE

The fuel shutoff valve is shown in Figure 6. To open the fuel shutoff valve, move the handle so that it points straight up and down. To close the fuel shutoff valve, move the handle to the horizontal position. Always shut off the valve when servicing any portion of the fuel system.

TEMPERATURE GAUGE

The engine coolant temperature gauge is shown in Figure 4. When the needle is in the middle area, the engine is at its normal operating temperature. The needle at the "H" end indicates an overheated engine.

WARNING LIGHTS

The engine oil pressure and charge indicator warning lights are located as shown in Figure 4.

CONTROLS AND INSTRUMENTS

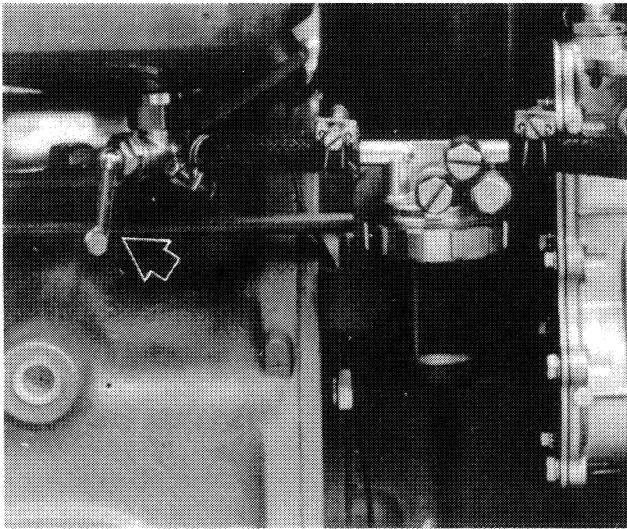


Figure 6 — Fuel Shutoff Valve

When the starter switch is turned "on," these lights will come on. After the engine has been started, the lights should go out within a few seconds. If they do not go out:

- Engine oil pressure warning light: Stop the engine immediately and investigate the cause. It is important to remember that this light indicates oil pressure only. The operator must regularly check the crankcase for proper oil level.
- Charge indicator warning light: This is an indication that the charging system is not operating normally. Investigate the cause as soon as possible, otherwise the battery will become fully discharged.

PROOF-METER

The Proof-Meter is located on the left side of the instrument panel, Figure 4. The Proof-Meter indicates:

- The hours and portions of hours your tractor has operated, based on an average engine speed of 2240 rpm. Engine speeds below 2240 rpm accumulate engine hours at a slower rate than clock hours. Engine speeds above 2240 rpm accumulate engine hours faster than clock hours. Use the Proof-Meter as a guide to determine hourly service and maintenance intervals.
- Use the engine revolutions per minute scale on the lower half of the Proof-Meter when operating PTO driven equipment. PTO driven equipment must be operated at an engine speed not to exceed 2455 rpm as shown by the PTO symbol on the rpm scale. Additional information on PTO operation can be found on page 15.

- The scales on the upper half of the Proof-Meter indicate ground speeds in miles per hour (MPH) for 3rd, 6th, 9th and 12th gears. Additional ground speed information can be found on page 47.

THROTTLE CONTROLS

HAND THROTTLE AND ENGINE STOP CONTROL

The hand throttle is shown in Figure 4. Pull the throttle down to increase engine rpm. Push the throttle forward to decrease engine rpm. Push the throttle full forward to stop the engine.

FOOT THROTTLE

The foot throttle, shown in Figure 7, can be used separately, or in conjunction with the hand throttle. With the hand throttle control lever set at a selected engine rpm, the foot throttle can be used to increase engine rpm to its maximum speed. Upon release of the foot throttle, the engine speed will return to the rpm at which the hand throttle has been set or idle, if the hand throttle is not at a pre-set position.

BRAKE CONTROLS

BRAKE PEDALS

The brake pedals are shown in Figure 7. The right brake pedal is used to brake the right rear wheel. The left pedal is used to brake the left rear wheel. Depress both pedals simultaneously to stop the tractor.

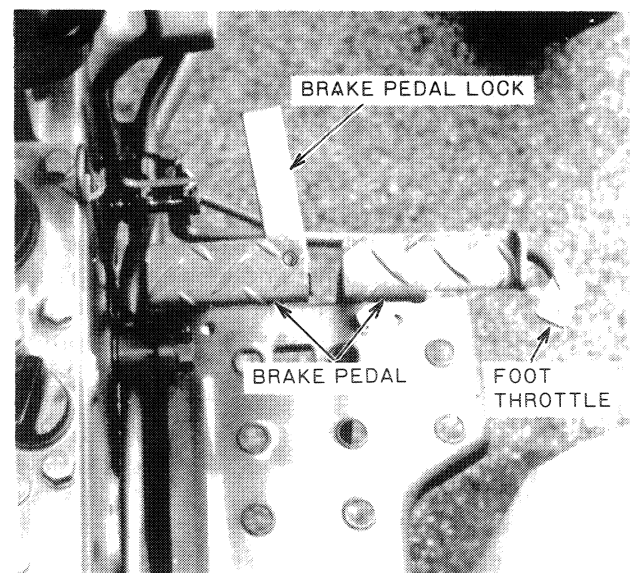


Figure 7 — Foot Throttle and Brake Controls

Thank you so much for reading.
Please click the “Buy Now!”
button below to download the
complete manual.



After you pay.

You can download the most
perfect and complete manual in
the world immediately.

Our support email:

ebooklibonline@outlook.com