

FARMALL® 45A
FARMALL® 55A
Compact Tractor

OPERATOR'S MANUAL

Part number 47538442

1st edition English

August 2013

Replaces part number 84281942



Contents

1 GENERAL INFORMATION

Note to the Owner	1-1
General information and safety - General information and safety	1-3
Product identification	1-4
Electro-magnetic compatibility (EMC)	1-6
Machine orientation.....	1-7
Fuel saving tips for optimum performance	1-8

2 SAFETY INFORMATION

Personal safety	2-1
Safety rules	2-2
Proposition 65	2-9
Ecology and the environment.....	2-10
Safety decals	2-11
Instructional decals	2-22
International symbols	2-29
Roll Over Protective Structure (ROPS) frame - Basic instructions	2-30

3 CONTROLS/INSTRUMENTS

ACCESS TO OPERATOR'S PLATFORM

Before operating.....	3-1
-----------------------	-----

OPERATOR'S SEAT

Operator's seat	3-1
Seat belt	3-2

FORWARD CONTROLS

Instrument panel.....	3-3
Hand controls and switches	3-5

LEFT-HAND SIDE CONTROLS

Clutch pedal	3-7
Front-wheel drive lever	3-7
Transmission controls	3-8
Power take-off	3-9

RIGHT-HAND SIDE CONTROLS

Park brake and brake pedals.....	3-10
Foot throttle pedal	3-11
Differential lock pedal.....	3-11
Main transmission shift lever	3-12

4 OPERATING INSTRUCTIONS

STARTING THE UNIT

Starting the tractor	4-1
Starting the tractor with jumper cables	4-6

STOPPING THE UNIT

Shut off the engine	4-7
---------------------------	-----

5 TRANSPORT OPERATIONS

ROAD TRANSPORT

Towing attachments	5-1
--------------------------	-----

RECOVERY TRANSPORT

Towing the tractor.....	5-2
-------------------------	-----

6 WORKING OPERATIONS

GENERAL INFORMATION

Field operation	6-1
Power take-off (PTO) operation	6-2
3-point linkage	6-5
Attaching 3-point implements.....	6-6
3-point lift rods, lower links and top link	6-8
Tractor hydraulics.....	6-10
Wheel tread settings.....	6-13
Ballasting and tires	6-19

7 MAINTENANCE

GENERAL INFORMATION

Lubrication and maintenance general information	7-1
Refueling the tractor	7-2
Biodiesel fuel	7-4
Guards and access panels	7-5
Consumables	7-6
Protecting the electrical system during charging or welding	7-7
General battery maintenance.....	7-8

MAINTENANCE CHART

Maintenance chart.....	7-9
------------------------	-----

Every 10 hours of operation or daily

Engine oil level	7-11
------------------------	------

Engine cooling system	7-11
Steering reservoir oil level	7-12

After the first 50 hours of operation

Clutch pedal free play	7-13
Brake pedal free play	7-13
Wheels and tires	7-13
Fan belt tension	7-13
Engine oil and filter	7-13
Fuel filter	7-13
Hydraulic oil filter	7-13
Fluid levels inspection	7-13

Every 50 hours

Clutch pedal free play	7-14
Brake pedal free play	7-15
Wheels and tires	7-16
Fan belt tension	7-16
Lubrication points	7-17
Transmission/hydraulics oil level	7-20
Front axle differential oil level	7-20
Front wheel hub oil level (FWD)	7-21
Air cleaner	7-21

Every 100 hours

Fuel filter	7-23
-------------------	------

Every 300 hours

Engine oil and filter	7-23
Engine air cleaner outer element	7-25
Fuel filter	7-28
Hydraulic oil filter	7-29
PTO clutch	7-30

Every 600 hours

Transmission breather	7-31
Front wheel bearings - (2WD)	7-31
Fuel injectors - servicing	7-32

Every 1200 hours

Transmission/hydraulics oil level	7-33
Engine coolant	7-34
Steering oil reservoir	7-35
Front axle differential oil (FWD)	7-36
Front wheel hub oil (FWD)	7-36
Air filter	7-37
Engine valves clearance	7-39

As required

Fuel injection system	7-40
Engine idle speed	7-41
Fuses	7-42
Fusible link	7-43
Bulbs	7-43

STORAGE

Tractor storage	7-44
-----------------------	------

8 TROUBLESHOOTING

SYMPTOM(S)

Engine - Troubleshooting	8-1
Electrical systems - Troubleshooting	8-3
Hydraulic systems - Troubleshooting	8-4
Brakes and controls - Troubleshooting	8-5

9 SPECIFICATIONS

General specifications	9-1
Consumables	9-7
Tractor dimensions - General	9-8

10 FORMS AND DECLARATIONS

Predelivery report - Owner copy	10-1
Predelivery report - Dealer copy	10-3

1 - GENERAL INFORMATION

Note to the Owner

This manual contains information concerning the adjustment and maintenance of the Farmall 45A and Farmall 55A tractors. You have purchased a dependable machine, but only by proper care and operation can you expect to receive the performance and long service built into this equipment. Please have all operators read this manual carefully and keep it available for ready reference.

Your CASE IH dealer will instruct you in the general operation of your new equipment. (Refer to the 'Delivery Report' at the back of this manual.) Your dealer's staff of factory-trained service technicians will be glad to answer any questions that may arise regarding the operation of your tractor. Case IH Max Service is also available. Call 1-877-4CASEIH (1-877-422-7344) or email maxservice.na@cnh.com.

Your CASE IH dealer carries a complete line of genuine CASE IH service parts. These parts are manufactured and carefully inspected to insure high quality and accurate fitting of any necessary replacement parts. Be prepared to give your dealer the model and product identification number of your new equipment when ordering parts. Locate these numbers now and record them below. Refer to the 'General Information' section of this manual for the location of the model and product identification numbers of your machine.

PLEASE RECORD THE FOLLOWING INFORMATION


Model

Product Identification Number (PIN)

Date Purchased

Attachment Model

Attachment Model

	<p>This is the safety alert symbol. It is used with and without signal words to alert you to potential personal injury hazards. Obey all safety messages that follow this symbol to avoid possible death or injury.</p>
---	---

⚠ WARNING

**Illustrations in this manual may show protective shielding open or removed to better illustrate a particular feature or adjustment.
Replace all shields before operating the machine.
Failure to comply could result in death or serious injury.**

W0012A

IMPROVEMENTS

CNH America LLC is continually striving to improve its products. We reserve the right to make improvements or changes when it becomes practical and possible to do so, without incurring any obligation to make changes or additions to the equipment sold previously.

Intended use

DO NOT use this machine for any purpose or in any manner other than as described in the manual, decals, or other product safety information provided with the machine. These materials define the machine's intended use.

Use only approved accessories and attachments designed for your machine. Consult your dealer on changes, additions or modifications that may be required for your machine. Do not make any unauthorized modifications to your machine.

ATTENTION: *The engine and fuel system on your machine is designed and built to government emissions standards. Tampering by dealer, customers, operators and users is strictly prohibited by law. Failure to comply could result in government fines, rework charges, invalid warranty, legal action and possible confiscation of the machine until rework to original condition is completed. Engine service and/or repairs must be done by a certified technician only!*

Operator's age

All persons who will be operating this machine shall possess a valid local vehicle operating permit and/or other applicable local age work permits.

WARNING

IMPROPER OPERATION OF THIS MACHINE CAN CAUSE DEATH OR SERIOUS INJURY.

MAKE SURE THAT EVERY OPERATOR:

-is instructed in the safe and proper use of this machine.

-reads and understands the operator's manual for this machine.

-reads and understands ALL safety signs on the machine.

Failure to comply could result in death or serious injury.

W0188A

Read and thoroughly understand this manual before operating this machine. If you are an inexperienced operator, study this manual and receive operating instructions from an experienced operator. Your dealer can assist you in learning machine operation and show you proper operating procedures. Keep this manual readily available, preferably with the machine. If the original manual is damaged, order a new one from your dealer.

General information and safety - General information and safety

GENERAL

This Manual has been prepared to assist you in the correct procedure for running-in, driving and operating and for the maintenance of your new tractor. Your tractor, which was designed to power and propel itself, is intended for use in normal and customary agricultural applications.

Read this Manual carefully and keep it in a convenient place for future references. If at any time you require advice concerning your tractor, do not hesitate to contact your Authorized Dealer. He has company trained personnel, genuine manufacturers' parts and the necessary equipment to carry out all your service requirements.

Your tractor has been designed and built to give maximum performance, economy and ease of operation under a wide variety of operating conditions. Prior to delivery, the tractor was carefully inspected, both at the factory and by your dealer to ensure that it reaches you in optimum condition. To maintain this condition and trouble-free operation, it is important that the routine services, as specified in Section 4 of this manual, are carried out at the recommended intervals.

CLEANING THE TRACTOR

When cleaning the tractor, particularly if using a high pressure washing machine, precaution has to be taken to safeguard electrical / electronic components and connections. The pressure generated by some of these machines is such that complete protection against water ingress cannot be guaranteed.

While washing the tractor, using a high pressure washing machine, do not stand too close to the tractor and avoid directing the jet at electrical connections, breathers,

seals, filler caps, etc. Never direct a cold water jet at a hot engine or exhaust.

SAFETY

Refer to 2-2 which include the list of precautions to be observed to ensure your safety and the safety of others. Read the safety precautions and follow the advice offered before operating the tractor.

SERVICE PARTS

It should be pointed out that genuine parts have been examined and approved by the company. The installation and/or usage of 'non-genuine' products could have negative effects upon the design characteristics of your tractor and thereby affect it's safety. The Company is not liable for any damage caused by the use of 'non-genuine' parts and accessories.

Only Genuine Case IH replacement parts should be used. The use of non-genuine parts may invalidate legal approvals associated with this product.

It is prohibited to carry out any modifications to the tractor unless specifically authorized, in writing, by the After Sales Service department of the Company.

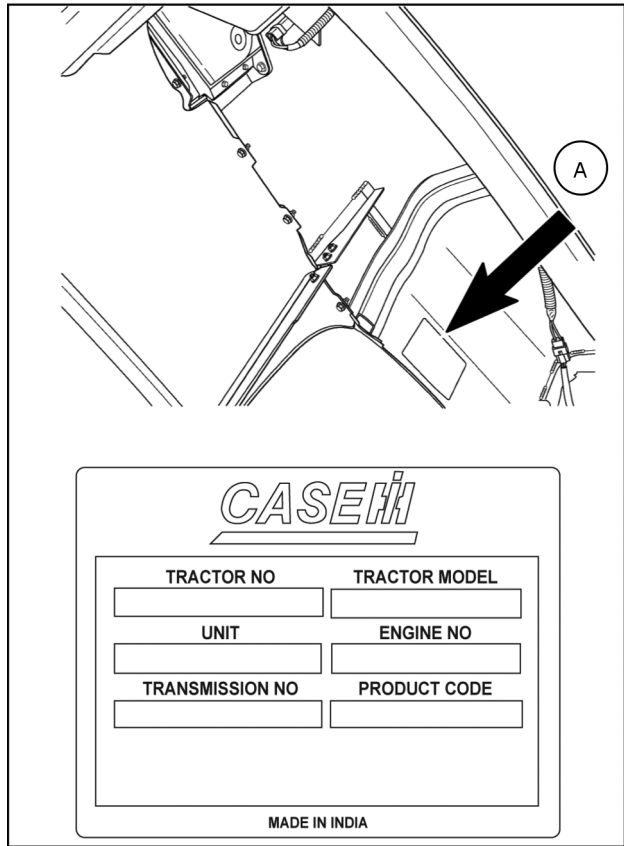
WARRANTY

Your tractor is warranted according to the current legislation in our country and with contractual agreements reached with the dealer at the time of sale. However, the warranty is no longer valid if the rules and instructions for the use and maintenance of the tractor described in this manual are not observed.

Product identification

Tractor Identification Decal

The tractor identification decal (**A**) is located on the right-hand underneath side of the tractor hood. The first line represents tractor serial number and model while the second line represents unit code and engine serial number followed by transmission serial number. Record the information the information that is on the decal for quick reference.

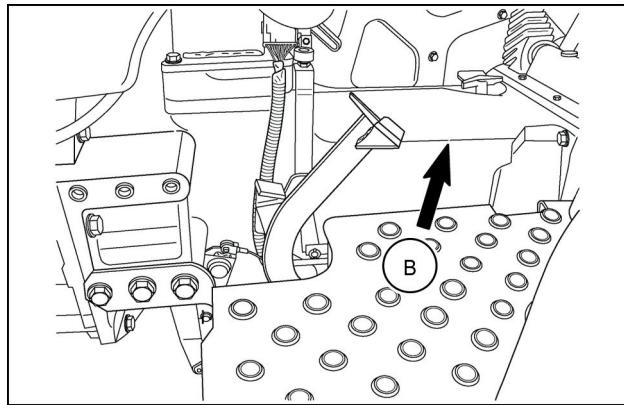


NHIL13CT00716BA 1

Tractor Identification Location (Stamped)

The tractor serial number, unit code and engine number are stamped on the top of the transmission housing at (**B**). These numbers are also repeated on the vehicle identification decal reproduced above.

Tractor Serial No.....

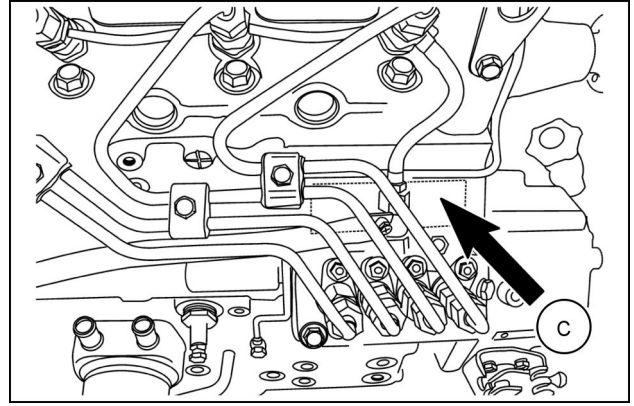


86090118NNN 2

Engine Identification

The engine serial number **(C)** stamped on right side of the engine cylinder block, behind the fuel injection pump. This number is repeated on tractor identification decal and also stamped on clutch box. Record the engine Serial No. below for quick reference.

Engine Serial No.....

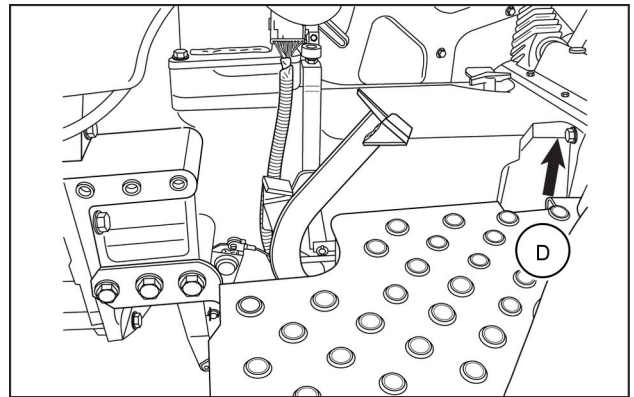


20108777 3

Transmission Identification

The transmission serial number **(D)** is stamped on left side of transmission housing below driver seat. This information is repeated on tractor identification decal. Record the Transmission Serial No. below for quick reference.

Transmission Serial No.....



NHIL13CT00547AA 4

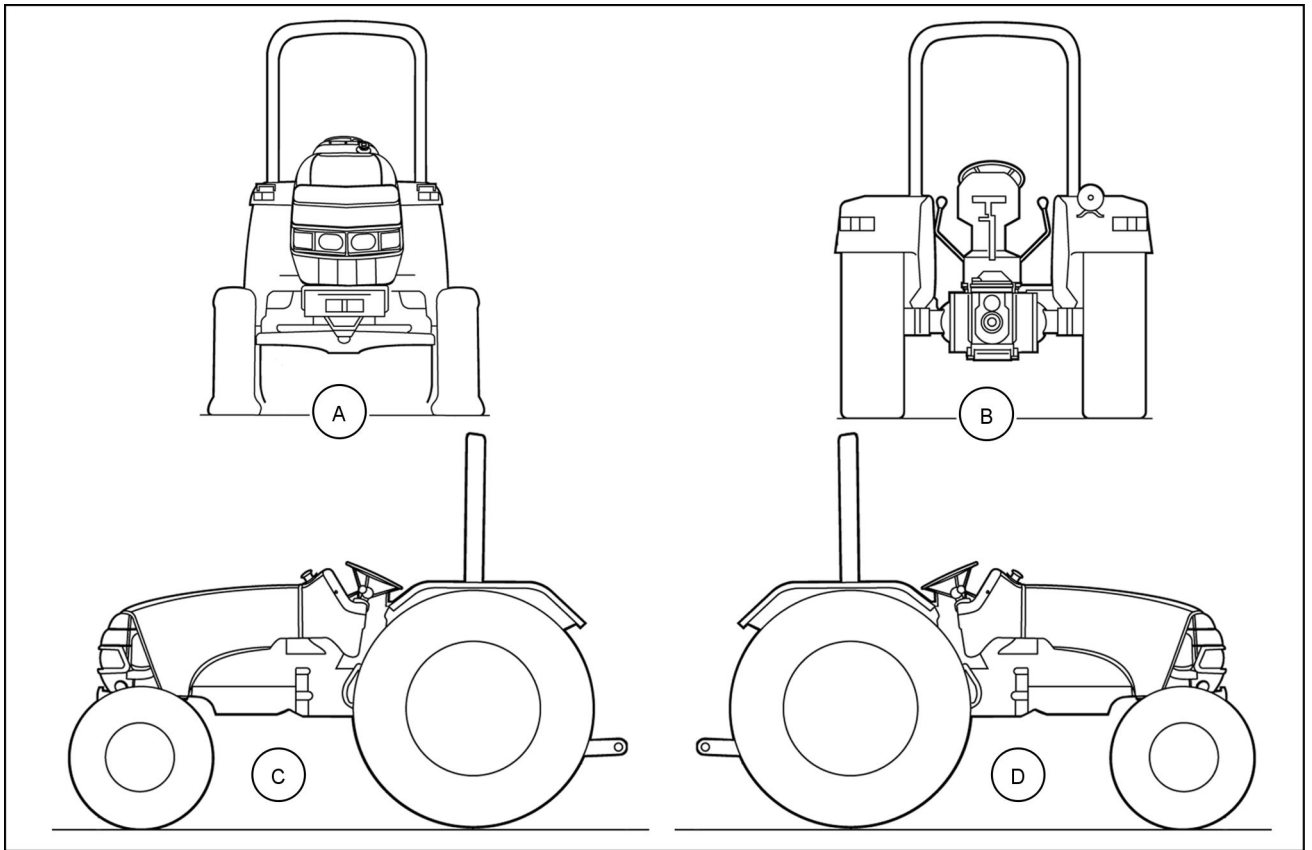
Electro-magnetic compatibility (EMC)

Interference may arise as a result of add-on equipment that may not necessarily meet the required standards. As such interference can result in serious malfunction of the unit and/or create unsafe situations, you must observe the following:

- The maximum power of emission equipment (radio, telephones, etc.) must not exceed the limits imposed by the national authorities of the country where you use the machine
- The electro-magnetic field generated by the add-on system should not exceed **24 V/m** at any time and at any location in the proximity of electronic components
- The add-on equipment must not interfere with the functioning of the on board electronics

Failure to comply with these rules will render the CASE IH warranty null and void.

Machine orientation



NHIL13CT00731FA 1

(A) Front
(C) Left-hand side

(B) Rear
(D) Right-hand side

Fuel saving tips for optimum performance

Proper maintenance of Tractor reduces fuel consumption to a greater extent.

1. Store fuel in properly cleaned, rust and contamination free containers.
2. Always fill the tank at the end of each day to reduce overnight condensation of moisture in the air, in turn to avoid damage to the fuel system.
3. Fuel filters should be replaced as per recommended time schedule as the filtering capacity is not retained after this specified time. It may allow harmful contamination and damage the fuel injection system. Follow the service schedule for draining the water from the filters and cleaning the feed pump filter.
4. Always use genuine fuel filters available from your Authorized Dealers.
5. Stop diesel leakage, if any, immediately.
6. Dirt particles entering the engine causes early wear of liners and piston rings, resulting in loss of power, engine oil & fuel consumption. Clean the pre-cleaner bowl daily and change the air cleaner oil as mentioned in service schedule. Ensure that there is no leakage through hoses and the air cleaner bowl seal is in good condition, keep hose clamps tight.
7. Check the Radiator coolant level daily and top-up with clean water only. Radiator fins should always be kept clean. Should it be necessary to replace radiator cap, use only genuine cap of the specified pressure. Never try to remove the thermostat. Check and adjust fan belt tension regularly. Ignoring these, will result in engine over heating and heavy diesel consumption.
8. Follow the running-in procedure given in this manual for optimum performance of your tractor.
9. Do not run the engine in idle condition for more than two minutes. It may result in wastage of fuel.
10. Do not rest your foot on clutch pedal, as this will cause clutch slippage, loss of engine power and increased fuel consumption. Maintain the specified clutch pedal free play.
11. Always drive the tractor in proper gear.
12. Use a lower gear while driving down a slope and use brakes sparingly.
13. Maintain proper tire pressures for field work as well as for roadwork. Refer the tire pressure chart given in this manual. Worn out tires causes wheel slippage and waste fuel. Re-tread or replace the tires if they are badly worn out. Adhere to tire ballasting as and when required to reduce wheel slippage and fuel consumption.
14. Always use matching implements to cut down the diesel wastage. Implements should be maintained in good condition, as usage of worn out implements will waste fuel.
15. Always plow length wise and plan your field run to reduce fuel consumption. Adjust the wheel track to suit the implement and avoid overlap when working in the field.
16. When using a PTO driven equipment, operate the engine at the recommended speed to reduce fuel consumption.

Buy Now



Our support email:

ebooklibonline@outlook.com