

# OPERATOR'S MANUAL

---

**Boomer™ 20**

**Boomer™ 25**

**Compact Tractor**

**Part number 47708986**

2<sup>nd</sup> edition English

June 2014

*Replaces part number 84423061*



# Contents

---

## 1 GENERAL INFORMATION

Note to the Owner .....	1-1
Tractor intended use.....	1-2
Product identification .....	1-4
Machine orientation.....	1-5
General specification - Biodiesel fuels .....	1-6

## 2 SAFETY INFORMATION

Precautionary statements .....	2-1
Safety rules.....	2-2
Do not operate tag.....	2-11
Ecology and the environment .....	2-12
Safety signs .....	2-13
Instructional signs .....	2-22
International symbols.....	2-29
Proposition 65 .....	2-30

## 3 CONTROLS AND INSTRUMENTS

### OPERATOR'S SEAT

Seat belt .....	3-1
Seat controls .....	3-1
Roll Over Protective Structure (ROPS) .....	3-2

### FORWARD CONTROLS

Instrument panel.....	3-4
Brake pedal .....	3-6
Park brake .....	3-7
Hand throttle.....	3-8
Power Take-Off (PTO) switch.....	3-8
Key switch .....	3-8
Differential lock pedal.....	3-9
Hydrostatic transmission (HST) control pedal .....	3-10
Multifunctional light switch .....	3-10

### LEFT-HAND SIDE CONTROLS

Transmission range selector lever.....	3-11
Front wheel drive selector lever .....	3-11

### RIGHT-HAND SIDE CONTROLS

Hydraulic power lift (HPL) .....	3-12
Hydraulic power lift (HPL) drop rate control valve .....	3-12
Rear remote hydraulic valve .....	3-13
Mid mount two spool hydraulic valve (optional) .....	3-14
Power take off (PTO) selection lever .....	3-16

---

## EXTERIOR CONTROLS

Hood latch .....	3-17
------------------	------

## 4 OPERATING INSTRUCTIONS

### COMMISSIONING THE UNIT

Engine break-in procedure .....	4-1
Power take off (PTO) operation .....	4-2
Three-point hitch .....	4-4
Attaching three-point hitch equipment .....	4-5
Drawbar Hitch .....	4-8
Hydraulic lift rocker .....	4-8

### STARTING THE UNIT

Key switch .....	4-9
Cold starting aids .....	4-9
Starting the engine .....	4-10
Starting the tractor with jumper cables .....	4-12

### STOPPING THE UNIT

Stopping the engine .....	4-13
Emergency stopping .....	4-14
Brake controls .....	4-15

### MOVING THE UNIT

Steering operation .....	4-16
Hydrostatic transmission (HST) operation .....	4-17
Transmission operation at low ambient temperatures .....	4-20

### PARKING THE UNIT

Brakes and controls - Park .....	4-21
----------------------------------	------

## 5 TRANSPORT OPERATIONS

### ROAD TRANSPORT

External lighting - Identification .....	5-1
Hazard warning light operation .....	5-2
Turn signal operation .....	5-3
Headlight/work light operation .....	5-4
Brake light operation .....	5-6
Rear work light (optional) .....	5-7
Driving the vehicle .....	5-8

### SHIPPING TRANSPORT

Carrying the tractor on a transporter .....	5-9
---	-----

---

## RECOVERY TRANSPORT

Towing .....	5-9
--------------	-----

## 6 WORKING OPERATIONS

### GENERAL INFORMATION

Tractor ballasting .....	6-1
Tractor ballasting weights .....	6-2
Liquid ballast .....	6-4

## 7 MAINTENANCE

### GENERAL INFORMATION

General information .....	7-1
Safety rules diesel fuel .....	7-3
Biodiesel fuel - approved blend ratio .....	7-3
Refueling the tractor .....	7-4
Organic Acid Technology (OAT) coolant .....	7-5
Consumables .....	7-6

### MAINTENANCE CHART

Maintenance Chart .....	7-7
-------------------------	-----

#### Every 10 hours or daily

Engine oil level .....	7-8
Engine cooling system .....	7-10

#### After the first 50 hours of operation

Engine oil and filter .....	7-11
Fuel filter .....	7-12
Hydraulic oil filter .....	7-13
Hydrostatic (HST) oil filter .....	7-13
Roll Over Protective Structure (ROPS) .....	7-14
Wheels bolt/nut .....	7-16

#### Every 50 hours

Grease fittings .....	7-17
Transmission fluid level .....	7-18
Brake pedal free play .....	7-18
Hydrostatic Transmission (HST) neutral adjustment .....	7-18
Fan belt .....	7-18
Tires and wheels .....	7-19
Front axle differential fluid level .....	7-21
Air cleaner .....	7-22

#### Every 100 hours

Fuel filter .....	7-24
-------------------	------

---

## Every 300 hours

Engine oil and filter .....	7-25
Hydraulic filter .....	7-25
Hydrostatic (HST) oil filter .....	7-25
Fuel filter.....	7-25
Fan belt.....	7-25
Roll Over Protective Structure (ROPS) .....	7-25
Wheels bolt/nut .....	7-25
Front wheels toe-in .....	7-26
Air cleaner element.....	7-27
HST transmission cooling fins and fan .....	7-29

## Every 600 hours

Front axle differential fluid .....	7-30
Transmission fluid .....	7-30

## Every 1000 hours

Engine coolant .....	7-32
----------------------	------

## General maintenance

Fuel injection system - Bleed.....	7-33
Fuel injectors - Bleed .....	7-35
Hydrostatic Transmission (HST) neutral adjustment .....	7-36
Fan belt.....	7-38
Roll Over Protective Structure (ROPS) .....	7-38
Battery.....	7-39
Alternator .....	7-40
Fuses.....	7-41
Maxi fuse .....	7-42
Headlight bulb .....	7-42
Tail/brake light bulb .....	7-44
Turn signal/hazard light bulb .....	7-45
Wheels bolt/nut .....	7-46
Front wheels toe-in .....	7-47
Brake pedal free play.....	7-47

## STORAGE

Storing the tractor .....	7-48
Removal of tractor from storage .....	7-49

## 8 TROUBLESHOOTING

### SYMPTOM(S)

Engine - Troubleshooting.....	8-1
Hydraulic service brakes - Troubleshooting .....	8-2
Hydraulic Lift System - Troubleshooting.....	8-2
Steering - Troubleshooting .....	8-2
Hydrostatic transmission - Troubleshooting .....	8-3
Electrical system - Troubleshooting .....	8-4

---

## 9 SPECIFICATIONS

Wheel tread settings.....	9-1
Tire inflation pressures .....	9-2
General specifications .....	9-3
Tractor dimensions .....	9-5

## 10 FORMS AND DECLARATIONS

Delivery report - owner copy .....	10-3
Delivery report - dealer copy .....	10-5

---

# 1 - GENERAL INFORMATION

## Note to the Owner

This manual contains information concerning the adjustment and maintenance of your new equipment. You have purchased a dependable machine, but only by proper care and operation can you expect to receive the performance and long service built into this equipment. Please have all operators read this manual carefully and keep it available for ready reference.

Your NEW HOLLAND dealer will instruct you in the general operation of your new equipment. (Refer to the 'Delivery Report' at the back of this manual.) Your dealer's staff of factory-trained service technicians will be glad to answer any questions that may arise regarding the operation of your machine. New Holland Top Service is also available. Call 1-866-NEWHLND (1-866-639-4563) or email [na.topservice@cnh.com](mailto:na.topservice@cnh.com).

Your NEW HOLLAND dealer carries a complete line of genuine NEW HOLLAND service parts. These parts are manufactured and carefully inspected to insure high quality and accurate fitting of any necessary replacement parts. Be prepared to give your dealer the model and product identification number of your new equipment when ordering parts. Locate these numbers now and record them below. Refer to the 'General Information' section of this manual for the location of the model and product identification numbers of your machine.

### PLEASE RECORD THE FOLLOWING INFORMATION

**Model**

---

**Product Identification Number (PIN)**

---

**Date Purchased**


---

**Engine Model**

---

**Engine (PIN)**

---

	<p>This is the safety alert symbol. It is used with and without signal words to alert you to potential personal injury hazards. Obey all safety messages that follow this symbol to avoid possible death or injury.</p>
---	---

### **⚠ WARNING**

**Illustrations in this manual may show protective shielding open or removed to better illustrate a particular feature or adjustment.  
 Replace all shields before operating the machine.  
 Failure to comply could result in death or serious injury.**

W0012A

**ATTENTION:** *The engine and fuel system on your machine is designed and built to government emission standards. Tampering by dealer, customers, operators, and end users is strictly prohibited by law. Failure to comply*

*could result in government fines, rework charges, invalid warranty, legal action, and possible confiscation of the machine until rework to original condition is completed. Engine service and/or repairs must be done by a certified technician only!*

### IMPROVEMENTS

CNH America LLC is continually striving to improve its products. We reserve the right to make improvements or changes when it becomes practical and possible to do so, without incurring any obligation to make changes or additions to the equipment sold previously.

## Tractor intended use

### INTENDED USE OF YOUR TRACTOR

Your tractor is designed and made to pull, to carry, and to power a variety of mounted or towed equipment, although within some physical limits. The working speed and performance may depend on a number of various parameters, such as weather and terrain conditions. Though the tractor is designed to perform in combination with a variety of equipment in most crops and conditions, there may be a number of combinations of above parameters, for which there is severe degradation of performance of the tractor and/or its mounted or trailed equipment. If you notice degradation of performance, contact your dealer for assistance. He may have useful information for improvements, or a kit may be available to enhance the performance.

- Do not use the tractor for another purpose than intended by the manufacturer and outlined in this manual.
- Do not use the tractor beyond its limits of terrain gradient and stability as outlined further in this manual. Using the tractor beyond these limits may result in roll-over or tip-over. Observe the recommendations in this manual.
- Use only approved accessories and attachments designed for your machine. Consult your dealer on changes, additions or modifications that may be required for your machine. Do not make any unauthorized modifications to your machine.
- Do not use the tractor on higher speeds than allowed by the load and the environment. A wet surface or other low adherence conditions may increase the braking distance or result in vehicle instability. Always adapt your traveling speed according to the load of the vehicle and the characteristics of the road.
- Do not use the tractor near or on soft verges of canals and brooks or banks and verges that are undermined by rodents. The tractor may sink sideways and roll-over.
- Do not use the tractor on brittle bridge heads and poor bridge floors. These constructions may collapse and cause roll-over of the tractor. Always check out the condition and carrying capacity of bridges and ramps prior to engage.
- Do not use the tractor without wearing the seat restraint system during activities where roll-over or tip-over hazards exist. The Roll Over Protection Structure (ROPS) cab or ROPS structure will only be fully effective when the driver remains attached to his seat.
- Do not use equipment mounted on the tractor which is not correctly matching and firmly fixed. Such equipment may increase the risk for roll-over and hit the tractor when coming loose. Ensure that the dimensions of the three-point linkage interface of both the tractor and the equipment are matching according to the categories defined in ISO 730. Ensure that the dimensions and speed of the Power Take-Off (PTO) shaft on the tractors are matching those of the equipment.
- Do not use the tractor in combination with equipment, without having consulted the specific Operators Manual provided with the equipment. The tractor is a universal tool to carry, tow, and drive a variety of equipment. This manual alone cannot provide you with all the information required for the safe operation of the combination.
- Do not use the tractor beyond its limits of dynamic stability. High speed, abrupt maneuvers, and fast and short cornering will increase the risk of roll-over.
- Do not use the tractor for pulling work, in cases where you do not know whether the load will yield, for instance when pulling stumps. The tractor may flip over when the stump is not yielding.
- Be cautious that the center of gravity of the tractor may increase when loads on the front-end loader or the three-point linkage are raised. In these conditions, the tractor may roll-over earlier than expected.
- Do not step down from the tractor without shutting down the PTO, shifting the transmission to park or neutral and applying the park brake, unless continued PTO operation is required for some equipment, such as pumps or wood chippers. The latter equipment may have an emergency stop device on the equipment itself, as human intervention is needed during operation. But other equipment, engaged and driven by the tractor will have no means to stop the power transmission, other than the PTO clutch of the tractor.
- You shall take the necessary precautions to always be aware of the possible presence of bystanders, certainly when maneuvering in confined areas, such as the farm yard and sheds. Keep people away from the tractor during work; ask bystanders to leave the field. There is not only the risk to be overrun by the tractor, but objects ejected by some equipment mounted on the tractor, such as a rotary mower, may cause harm. Stones may be thrown further than the mowed crop. Pay the necessary attention while operating next to public roads or footpaths. Thrown objects can get projected outside the field and hit unprotected people like bikers or pedestrians. Wait to cut the edge of the field till it is clear of bystanders.
- Do not allow riders on the tractor; do not allow people standing on the access way or step to the cab when the tractor is moving. Your view to the left will be obstructed and a rider risks to fall from the tractor during unforeseen or abrupt movements.
- Always stay clear from implements operating area and especially do not stand between tractor and trailed vehicle either three-point linkage when operating lift controls; ensure no bystanders are near these operating areas.

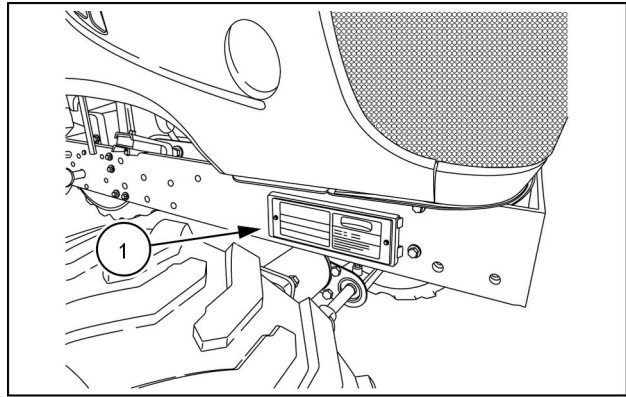


- Your tractor may be equipped with a number of sensors to control safety functions. Tripping these sensors will result in a safe operation mode. Do not attempt to bypass any function on the tractor. You will be exposed to serious hazards, and moreover, the behavior of the tractor may become unpredictable.
- A tractor has only one operator station and is a one man operated vehicle. Other people on or around the tractor during normal operation are not allowed.
- All persons who will be operating this machine shall possess a valid local vehicle operating permit and/or other applicable local age work permits.
- The machine is designed and produced exclusively for agricultural use.
- The machine is not designed for light/heavy forestry applications; usage is prohibited for forestry applications.
- All other use will be considered to be contrary to the use specified by CNH INDUSTRIAL AMERICA LLC, who cannot be held liable for damage to property or the machine, or for personal injuries which may result.
- Persons who risk improper use will therefore assume the responsibility for any consequences arising from such use.
- Compliance with the instructions for use, maintenance and repairs described in this manual, are the essential preconditions for the use specified by CNH INDUSTRIAL AMERICA LLC.
- The machine must only be used, serviced, or repaired by personnel trained in the relevant working methods and safety regulations and who have been authorized to work on the machine.
- The engine and fuel system on your machine is designed and built to government emissions standards. Tampering by dealer, customers, operators and users is strictly prohibited by law. Failure to comply could result in government fines, rework charges, invalid warranty, legal action and possible confiscation of the machine until rework to original condition is completed. Engine service and/or repairs must be done by a certified technician only!
- The user must also observe the rules concerning general safety and accident prevention, including the Highway Code when driving on public highways.
- Any arbitrary modifications made to this machine will release CNH INDUSTRIAL AMERICA LLC from any liability resulting from damage or injury.
- CNH INDUSTRIAL AMERICA LLC and all its distribution organizations, inclusive of, but not restricted to, national, regional, or local distributors, cannot be held liable for damage resulting from the malfunction of parts and/or components not approved by CNH INDUSTRIAL AMERICA LLC.
- Under no circumstances will a guarantee be issued for products made or sold by CNH INDUSTRIAL AMERICA LLC that are damaged as a result of the malfunction of parts and/or components not approved by CNH AMERICA LLC.

## Product identification

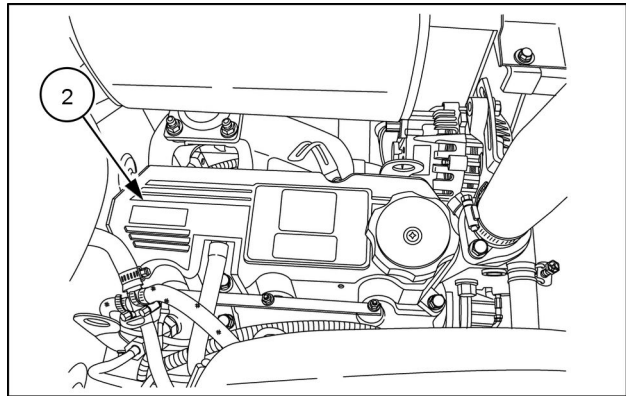
The Product Identification Plate **(1)** is located on the right-hand front side of the frame.

The numbers on the plate are important in the event your tractor should require future service.



83115276 1

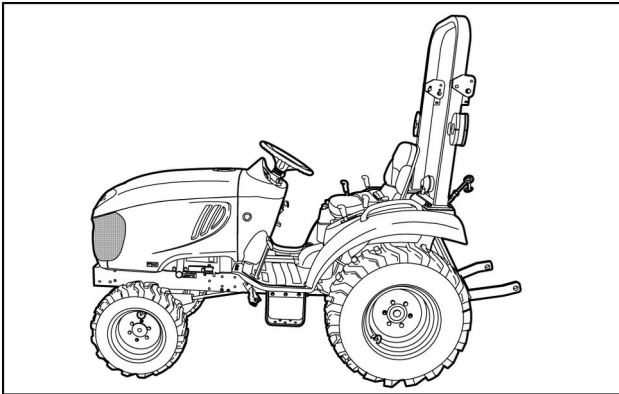
The engine identification information plate **(2)** is located on the rearward end of the engine valve cover.



83114160 2

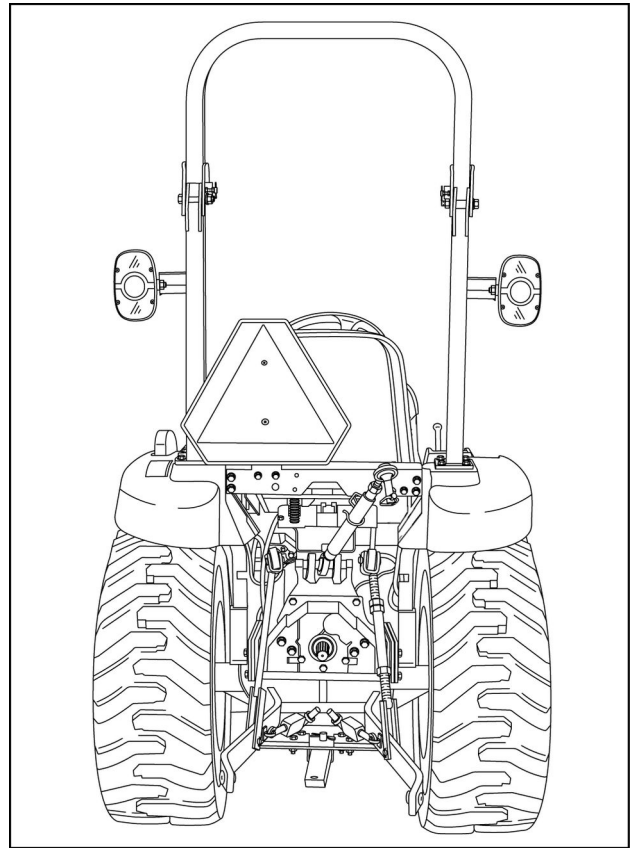
## Machine orientation

**NOTE:** On this equipment, left-hand and right-hand are determined by standing behind the unit, looking in the direction of travel.



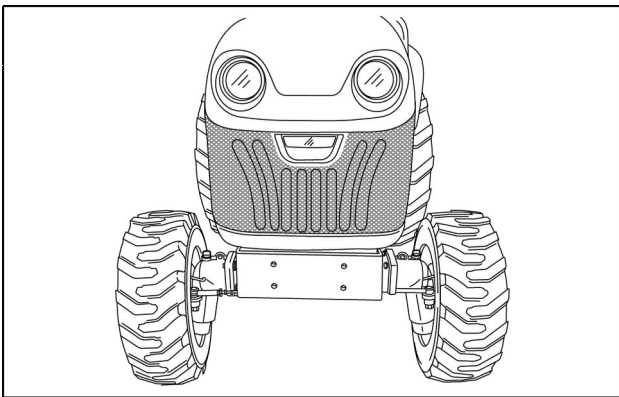
83114210 1

**Left-hand view**



83114164A 2

**Rear view**



83118708 3

**Front view**

## General specification - Biodiesel fuels

Fatty Acid Methyl Ester Biodiesel (Biodiesel Fuel) consists of a family of fuels derived from vegetable oils treated with methyl esters.

**NOTICE:** *Biodiesel Fuel blends are approved for your engine only if they comply with EN14214 Specification Standards or ASTM D6751.*

**NOTICE:** *It is imperative that you check which blend is approved for your engine with your NEW HOLLAND dealer. Be aware that the use of Biodiesel Fuel that does not comply with the Standards mentioned above could lead to severe damage to the engine and fuel system of your machine. The use of fuels that are not approved may void NEW HOLLAND Warranty coverage.*

### Biodiesel Fuel Usage Conditions

**NOTICE:** *The Biodiesel Fuel must meet the fuel Specification mentioned above.*

Biodiesel Fuel must be purchased from a trusted supplier that understands the product and maintains good fuel quality. Biodiesel Fuel must be pre-blended by the supplier. Mixing Biodiesel Fuels on-site can result incorrect mixture that can lead to problems with both engine and fuel system.

Engine performance is affected by the use of Biodiesel Fuel. There may be up to **12 %** reduction in power or torque depending on the blend used.

**NOTICE:** *DO NOT modify the engine and/or injection pump settings to recover the reduced performance.*

The reduced power must be accepted if using any Biodiesel Fuel blend.

Some modification may be required to allow your engine to run Biodiesel Fuel. Consult you dealer for complete information on these modifications.

Biodiesel Fuel has a higher cloud point than Diesel Fuel.

**NOTICE:** *The use of high Biodiesel Fuel blends are not recommended in cold weather conditions.*

With Biodiesel Fuels, it may be necessary to change the engine oil, engine oil filter and fuel filter elements more frequently than with Diesel Fuels. Biodiesel Fuel can remove rust and particles from the inside of on-site fuel storage tanks that would normally adhere to the sides of the tank. Like particle deposits that commonly occur with Diesel Fuel, these particles can become trapped by the machine fuel filters, causing blockage and shortening filter life. In cold weather, this is more likely to happen. Consult your NEW HOLLAND dealer for information on cold weather operation and proper maintenance intervals when using any Biodiesel Fuel blend.

When handling Biodiesel Fuel, care must be taken not to allow water into the fuel supply. Biodiesel Fuel will actually attract moisture from the atmosphere.

Fuel tanks must be kept as full as possible to limit the amount of air and water vapors in them. It may be necessary to drain the fuel filter water tap more frequently.

Potential oxidation and stability could be a problem with the fuel stored in the machine.

**NOTICE:** *Machines must not be stored for more than three months with Biodiesel Fuel blends in the fuel system.*

If long storage periods are necessary, the engine must run on Diesel Fuel for 20 hours to flush the Biodiesel Fuel out of the engine fuel system prior to storage.

**NOTICE:** *Biodiesel Fuel must not be stored in on-site storage tanks for more than three months.*

Any spillage of Biodiesel Fuel must be cleaned up immediately before it can cause damage to the environment and the paint finish of the machine.

Before using Biodiesel Fuel blends you should consult with your dealer to receive full information about the approved blend for your machine and any detailed conditions of its usage.

**NOTICE:** *Be aware that not fulfilling the requirements and conditions of Biodiesel Fuel usage will void your machine's NEW HOLLAND Warranty coverage.*

## 2 - SAFETY INFORMATION

### Precautionary statements

#### Personal safety



This is the safety alert symbol. It is used to alert you to potential personal injury hazards. Obey all safety messages that follow this symbol to avoid possible death or injury.

Throughout this manual and on machine safety signs, you will find the signal words DANGER, WARNING, and CAUTION followed by special instructions. These precautions are intended for the personal safety of you and those working with you.

Read and understand all the safety messages in this manual before you operate or service the machine.

**!** DANGER indicates a hazardous situation that, if not avoided, will result in death or serious injury. The color associated with DANGER is RED.

**!** WARNING indicates a hazardous situation that, if not avoided, could result in death or serious injury. The color associated with WARNING is ORANGE.

**!** CAUTION indicates a hazardous situation that, if not avoided, could result in minor or moderate injury. The color associated with CAUTION is YELLOW.

### **FAILURE TO FOLLOW DANGER, WARNING, AND CAUTION MESSAGES COULD RESULT IN DEATH OR SERIOUS INJURY.**

#### Machine safety

**NOTICE:** Notice indicates a situation that, if not avoided, could result in machine damage or property damage. The color associated with Notice is BLUE.

Throughout this manual you will find the signal word Notice followed by special instructions to prevent machine damage or property damage. The word Notice is used to address practices not related to personal safety.

#### Information

**NOTE:** Note indicates additional information that clarifies steps, procedures, or other information in this manual.

Throughout this manual you will find the word Note followed by additional information about a step, procedure, or other information in the manual. The word Note is not intended to address personal safety or property damage.

## Safety rules

### General safety rules

Read this manual carefully before starting, using carrying out maintenance, refueling or performing any other type of operation on the tractor.

Read all the safety decals on the tractor and follow the instructions thereon before starting, operating, refueling or carrying out maintenance on the tractor. Promptly replace any decals that are damaged, lost or illegible. Clean the decals if they are covered by mud or debris.

The tractor must only be used by responsible personnel, trained in tractor use and authorized to operate the tractor.

Use caution when operating the tractor on slopes. Raised equipment, full tanks and other loads will change the center of gravity of the tractor. The tractor can tip or roll over when near ditches and embankments or uneven surfaces.

Avoid using the tractor in unsuitable physical conditions, stop work instead.

Never permit anyone other than the operator to ride on the tractor.

Never operate the tractor under the influence of alcohol, drugs, or while otherwise impaired.

When digging or using ground engaging attachments be aware of buried cables. Contact local utilities to determine the locations of services.

Pay attention to overhead power lines and hanging obstacles. High voltage lines may require significant clearance for safety.

Hydraulic oil or diesel fuel leaking under pressure can penetrate the skin, causing serious injury or infection.

- DO NOT use your hand to check for leaks. Use a piece of cardboard or paper.
- Stop engine, remove key and relieve the pressure before connecting or disconnecting fluid lines.
- Make sure all components are in good condition and tighten all connections before starting the engine or pressurizing the system.
- If hydraulic fluid or diesel fuel penetrates the skin, seek medical attention immediately.
- Continuous long term contact with hydraulic fluid may cause skin cancer. Avoid long term contact and wash the skin promptly with soap and water.
- Before removing any hydraulic tubing, check that the system is not pressurized.

Do not alter the calibration of the pressure relief valves in the various hydraulic circuits (steering, hydraulic lift, auxiliary distributors, etc.).

Keep clear of moving parts. Loose clothing, jewelry, watches, long hair, and other loose or hanging items can become entangled in moving parts.

Wear protective equipment when appropriate.

DO NOT attempt to remove material from any part of the tractor while it is being operated or components are in motion.

Make sure all guards and shields are in good condition and properly installed before operating the tractor. Never operate the tractor with shields removed. Always close access doors or panels before operating the tractor.

Enter and leave the tractor using the steps and handles provided. Dirty or slippery steps, ladders, walkways, and platforms can cause falls. Make sure these surfaces remain clean and clear of debris.

A person or pet within the operating area of a tractor can be struck or crushed by the tractor or its equipment. DO NOT allow anyone to enter the work area.

Raised equipment and/or loads can fall unexpectedly and crush persons underneath. Never allow anyone to enter the area underneath raised equipment during operation.

Never operate engine in enclosed spaces as harmful exhaust gases may build up.

Before starting the tractor, be sure that all controls are in neutral or park lock position.

Before starting the engine, make sure that all attached implements are lowered to the ground.

Start the engine only from the operator's seat. If the safety start switch is bypassed, the engine can start with the transmission in gear. Do not connect or short across terminals on the starter solenoid. Attach jumper cables as described in the manual. Starting in gear may cause death or serious injury.

Always keep windows, mirrors, all lighting, and Slow Moving Vehicle (SMV) emblem clean to provide the best possible visibility while operating the tractor.

Operate controls only when seated in the operator's seat, except for those controls expressly intended for use from other locations.

Thank you so much for reading.  
Please click the “Buy Now!”  
button below to download the  
complete manual.



After you pay.

You can download the most  
perfect and complete manual in  
the world immediately.

Our support email:

[ebooklibonline@outlook.com](mailto:ebooklibonline@outlook.com)