

ORIGINAL INSTRUCTIONS

OPERATOR'S MANUAL

6810

Tier 3

Tractor

Part number 48032414

1st edition English

February 2019



Contents

1 GENERAL INFORMATION

Note to the owner.....	1-1
Intended use.....	1-2
Electro-Magnetic Compatibility (EMC)	1-3
Product identification	1-4
Operator's manual storage on the machine	1-7
Machine orientation.....	1-8
Machine components.....	1-9

2 SAFETY INFORMATION

Safety rules and signal word definitions	2-1
Safety rules.....	2-2
Ecology and the environment	2-11
Safety features	2-12
Safety signs	2-15
Informational decals	2-21

3 CONTROLS AND INSTRUMENTS

Access to operator's platform

Proper entry and exit	3-1
-----------------------------	-----

Operator's seat

Operator seat adjustments	3-2
Seat belt operation	3-3

Forward controls

Instrument panel.....	3-4
Front console	3-5
Foot pedals	3-6
Transmission controls	3-7

Left-hand side controls

Power Take-Off (PTO).....	3-8
---------------------------	-----

Right-hand side controls

Parking brake.....	3-9
Differential lock pedal.....	3-10
Hydraulic controls	3-11

Rearward controls

Rear work light	3-12
-----------------------	------

Display

Analog/Digital Instrument Cluster (ADIC)	3-13
Warning and status indicators	3-15

4 OPERATING INSTRUCTIONS

Commissioning the unit

Run in period of a new machine	4-1
Multifunctional light switch	4-2

Starting the unit

Starting the engine	4-3
---------------------------	-----

Stopping the unit

Stopping the tractor	4-6
----------------------------	-----

Moving the unit

General transmission operation	4-7
Steering control	4-7

5 TRANSPORT OPERATIONS

Road transport

Basic instructions	5-1
High visibility position markers	5-2

Recovery transport

Towing the tractor	5-3
--------------------------	-----

6 WORKING OPERATIONS

Tires and wheels

Tire load and inflation charts	6-1
Tractor ballasting	6-6
Liquid ballast	6-8
Front wheel tread settings	6-9
Rear wheel tread settings	6-12

Driveline

Creeper gears	6-14
Four-Wheel Drive (4WD)	6-16
Differential lock	6-17
Front axle oscillation	6-18

Hydraulic system

Hydraulic Power Lift (HPL)	6-19
Open center remote valves	6-20
Hydraulic remote control valves	6-20
Connecting remote cylinders	6-21
Bleeding remote cylinders	6-22
Operating single-acting hydraulic cylinders	6-23
Operating double-acting hydraulic cylinders	6-24
Closed center (Deluxe) remote valves	6-25
Hydraulic remote control valves	6-25
Connecting remote cylinders	6-27
Bleeding remote cylinders	6-29
Operating single-acting hydraulic cylinders	6-30
Operating double-acting hydraulic cylinders	6-31
Operating continuous flow hydraulic equipment	6-32

Implements

Adjusting the drawbar	6-34
Hitch operation	6-37
Power Take-Off (PTO) operation	6-43

7 MAINTENANCE

General information

Safety rules – Machine service access	7-1
Warranty notice	7-1
Jacking points	7-1
Opening the hood	7-3
Fueling the machine	7-4
General specification - Biodiesel fuels	7-5
Torque - Minimum tightening torques for normal assembly	7-6
Standard torque data for hydraulics	7-11
Organic Acid Technology (OAT) coolant	7-15
Fluid capacities and lubricants	7-16
Engine oil - Recommended engine oil for operating temperature ranges	7-18

Maintenance planning

Maintenance chart	7-19
-------------------------	------

Warning light on

Engine air filter (outer element) - Clean	7-21
Water separator - Drain fluid	7-24

Every 10 hours or daily

Engine oil - Level make up	7-26
Radiator, oil cooler, and air cooler - Clean	7-27
Engine cooling system - Level make up	7-28

Water separator - Drain fluid	7-29
-------------------------------------	------

First 50 hours

Transmission and hydraulic oil filter - Replace	7-30
Engine oil and oil filter - Change	7-32

Every 50 hours

Tire pressure - Check	7-36
Transmission, rear axle, and hydraulic system oil - Level make up	7-36
Four-Wheel Drive (4WD) front axle differential oil - Level make up	7-37
Four-Wheel Drive (4WD) front axle hub oil - Level make up	7-38
Fuel filter water separator - Drain fluid	7-39
Wheel hardware - Check	7-40
Grease points - Grease	7-41
Clutch pedal free play - Adjust	7-48

Every 300 hours

Transmission, rear axle, and hydraulic system oil - Change fluid	7-49
Transmission and hydraulic oil filter - Replace	7-51
Engine oil and oil filter - Change	7-53
Final drive housing oil - Level make up	7-54
Clutch pedal free play - Adjust	7-55
Parking brake - Adjust	7-56
Brake pedal - Adjust	7-57
Alternator drive belt - Adjust	7-58
Fuel filter - Replace	7-60

Every 600 hours

Transmission, rear axle, and hydraulic system oil - Change fluid	7-63
Front axle hubs (2WD) - Clean	7-65
Engine air filter (outer element) - Replace	7-66

Every 1200 hours or annually

Engine air filter (inner element) - Replace	7-68
Four-Wheel Drive (4WD) front axle differential oil - Change fluid	7-71
Four-Wheel Drive (4WD) front axle hub oil - Change fluid	7-72
Final drive housing oil - Change fluid	7-73
Engine valves clearance - Check and adjust	7-74

Every 2000 hours

Fuel injector spray - Check	7-75
-----------------------------------	------

Every 4000 hours or four years

Engine coolant - Change fluid	7-75
-------------------------------------	------

As required

Headlight bulb - Replace	7-78
Work light bulb - Replace	7-81
Front light bulb - Replace	7-85
Rear light bulb - Replace	7-86
Steering stops - Adjust	7-87
Steering toe-in - Adjust	7-88
Parking brake - Adjust	7-90

Fuse and relay locations

Chassis fuse box	7-91
------------------------	------

Storage

Preparing for storage	7-92
Removal from storage	7-92

8 TROUBLESHOOTING

Symptom(s)

Engine	8-1
Transmission	8-3
Electrical system	8-4
Hydraulic system	8-5
Hydraulic remote control valves	8-6
Three-point hitch	8-7

9 SPECIFICATIONS

Length and height	9-1
Width	9-1
Ground clearance	9-3
Weight	9-5
Engine	9-6
Cooling system	9-6
Transmission	9-7
Ground speeds	9-7
Maximum side slope operation	9-11
Power Take-Off (PTO)	9-12
Hydraulic system	9-13
Three-point linkage	9-13
Brake system	9-13
Steering system	9-13
Electrical system	9-14
Fluid capacities and lubricants	9-15

10 ACCESSORIES

Roll Over Protective Structure (ROPS)	10-1
Hitch	10-2

Fuel filter water separator 10-3

11 FORMS AND DECLARATIONS

Delivery report - Owner copy 11-1

Delivery report - Dealer copy 11-2



1 - GENERAL INFORMATION

Note to the owner

This manual contains information concerning the adjustment and maintenance of your new equipment. You have purchased a dependable machine, but only by proper care and operation can you expect to receive the performance and long service built into this equipment. Please have all operators read this manual carefully and keep it available for ready reference.

ATTENTION: *The engine and fuel system on your machine is designed and built to government emission standards. Tampering by dealer, customers, operators, and end users is strictly prohibited by law. Failure to comply could result in government fines, rework charges, invalid warranty, legal action, and possible confiscation of the machine until rework to original condition is completed. Engine service and/or repairs must be done by a certified technician only!*

Your NEW HOLLAND dealer will instruct you in the general operation of your new equipment. (Refer to the 'Delivery Report' at the back of this manual.) Your dealer's staff of factory-trained service technicians will be glad to answer any questions that may arise regarding the operation of your machine. New Holland Top Service is also available. Go to www.newholland.com.

Your NEW HOLLAND dealer carries a complete line of genuine NEW HOLLAND service parts. These parts are manufactured and carefully inspected to insure high quality and accurate fitting of any necessary replacement parts. Be prepared to give your dealer the model and product identification number of your new equipment when ordering parts. Locate these numbers now and record them below. Refer to the 'General Information' section of this manual for the location of the model and product identification numbers of your machine.

Please record the following information

Model


Product Identification Number (PIN)

Date purchased

Header width (as applicable)

Engine model (as applicable)

Engine PIN (as applicable)

	This is the safety alert symbol. It is used with and without signal words to alert you to potential personal injury hazards. Obey all safety messages that follow this symbol to avoid possible death or injury.
---	--

WARNING

Illustrations in this manual may show protective shielding open or removed to better illustrate a particular feature or adjustment.

Replace all shields before operating the machine.

Failure to comply could result in death or serious injury.

W0012A

Improvements

CNH Industrial America LLC is continually striving to improve its products. We reserve the right to make improvements or changes when it becomes practical and possible to do so, without incurring any obligation to make changes or additions to the equipment sold previously.

Intended use

This tractor, with standard equipment and authorized attachments, is intended to be used for customary farming and related agriculture operations. Farming implements and attachments for loading and moving materials can be used on the tractor where recommended and approved by NEW HOLLAND. Installation of utility (dozer) blades, tile plows, or push bars on the tractor is not recommended. Any tractor damage resulting from the installation and/or use of such equipment is not covered by the tractor warranty.

Though the machine is designed to perform in most agricultural conditions, there may be a number of combinations for which there is severe degradation of performance of the machine or systems thereof. The machine performance depends on a number of limitative parameters, such as weather and terrain conditions, agricultural demands, and harvesting demands. If you notice degradation of performance, contact your NEW HOLLAND dealer for assistance. They may have useful information for improvements, or a kit may be available to enhance the performance.

Prior to delivery, all machines are carefully inspected by your local authorized NEW HOLLAND dealer, ensuring that the machine reaches the user in perfect condition. To maintain the tractor in this condition and ensure trouble-free operation, the routine maintenance described in section 7-19 of this manual must be carried out at the specified intervals.

Prohibited usage

Consult an authorized NEW HOLLAND dealer about changes, additions, or modifications that can be required for this machine to comply with various regulations and safety requirements. Unauthorized modifications will cause serious injury or death. Anyone making such unauthorized modifications is responsible for the consequences.

NOTICE: *DO NOT use this machine for any purpose or in any manner other than as described in the manual, decals, or other product safety information provided with the machine. These materials define the intended use of the machine.*

ATTENTION: *The engine and fuel system on your machine is designed and built to government emissions standards. Tampering by dealer, customers, operators, and users is strictly prohibited by law. Failure to comply could result in government fines, rework charges, invalid warranty, legal action, and possible confiscation of the machine until rework to original condition is completed. Engine service and/or repairs must be done by a certified technician only!*

NOTICE: *All persons who will be operating this tractor shall possess a valid local vehicle operating permit and/or other applicable local age work permits.*

Electro-Magnetic Compatibility (EMC)

Interference may arise as a result of add-on equipment that may not necessarily meet the required standards. As such interference can result in serious malfunction of the unit and/or create unsafe situations, you must observe the following:

- The maximum power of emission equipment (radio, telephones, etc.) must not exceed the limits imposed by the national authorities of the country where you use the machine
- The electro-magnetic field generated by the add-on system should not exceed **24 V/m** at any time and at any location in the proximity of electronic components
- The add-on equipment must not interfere with the functioning of the on board electronics

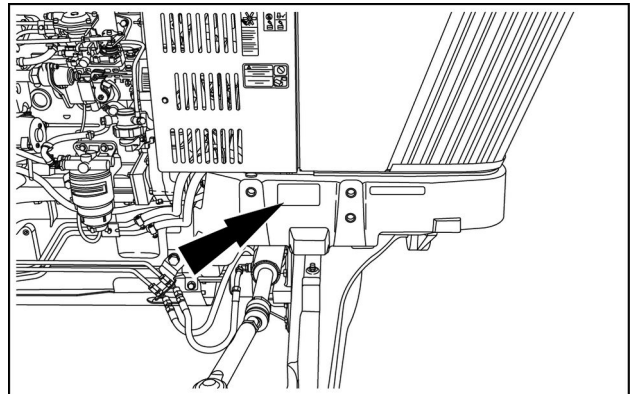
Failure to comply with these rules will render the NEW HOLLAND warranty null and void.

Product identification

The machine is identified with a Product Identification Number (PIN) plate which contains 17 digits, as well as a serial number. You should supply the machine PIN plate data to your NEW HOLLAND dealer when requesting parts or service. The PIN is also used to identify the machine in case of theft.

Product Identification Number (PIN) plate

The Product Identification Number (PIN) plate is located on the right-hand side of the front axle support.

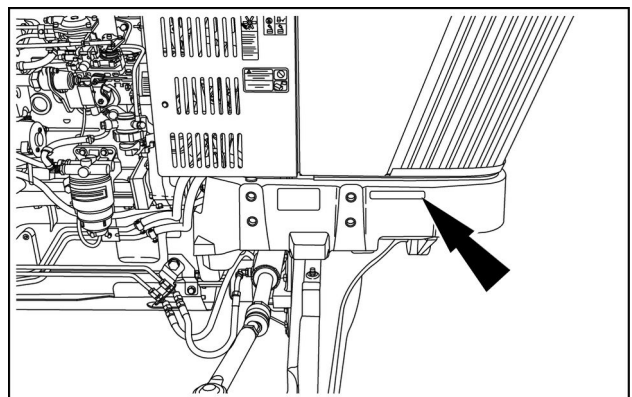


NHIL17TR00884AA 1



NHIL18TR00003AA 2

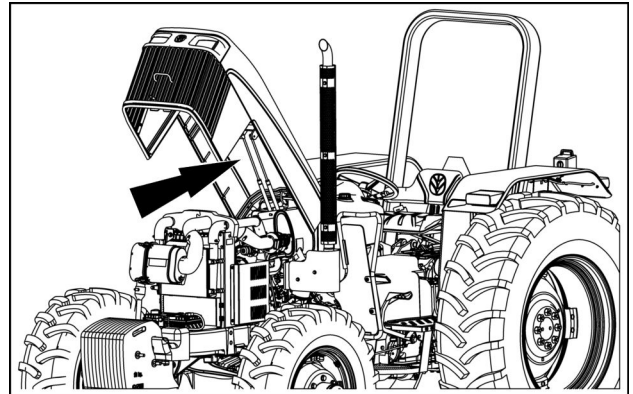
The PIN is also stamped on the right-hand side of the front axle support.



NHIL17TR00884AA 3

Serial Number decal

The serial number decal is located on the internal part of the hood.



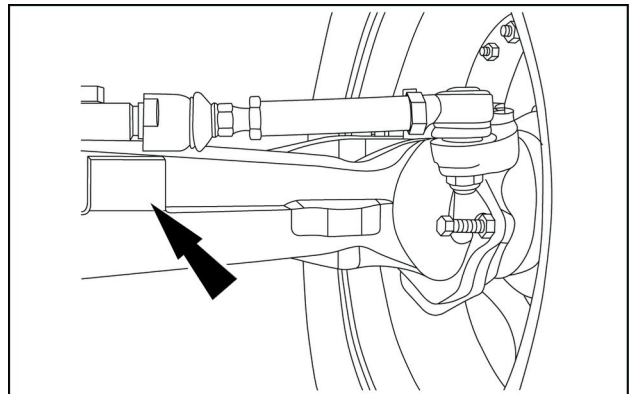
NHIS18TR00277AA 4

CNH Industrial S.A de C.V. MADE IN MEXICO		
TRACTOR NUMBER	MODEL	UNIT
<input type="text"/>	<input type="text"/>	<input type="text"/>
ENGINE	TRANSMISSION	REAR AXLE
<input type="text"/>	<input type="text"/>	<input type="text"/>
HYDRAULIC PUMP	HYDRAULIC LIFT	ENGINE DATE
<input type="text"/>	<input type="text"/>	<input type="text"/>
SPECIAL ORDER	MAKE:	
<input type="text"/>		

NHIL14TR0006AA 5

Four-Wheel Drive (4WD) front axle Product Identification Number (PIN) plate

The Four-Wheel Drive (4WD) front axle PIN plate is located on the rear right-hand side of the front axle housing.



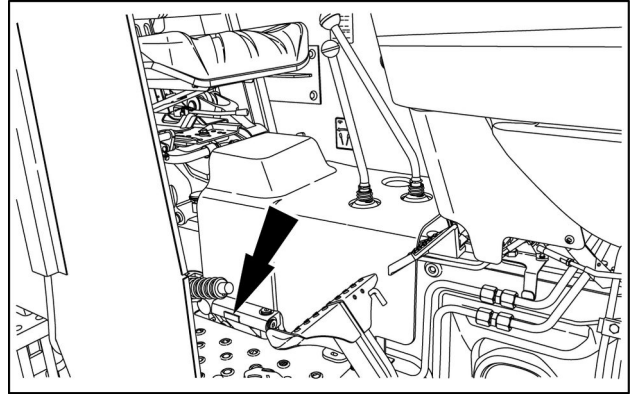
NHIL14TR00240AA 6

○ COMPONENT SERIAL NUMBER ○	
<input type="text"/>	<input type="text"/>
CNH PART NUMBER	TOTAL RATIO
<input type="text"/>	<input type="text"/>
INPUT ROTATION	DIFFERENTIAL TYPE
<input type="text"/>	<input type="text"/>
C.W.	
	OIL SPECIFICATION LIT.
DFF.	SEE OPERATOR'S MANUAL
PLANET(each)	SEE OPERATOR'S MANUAL
CASE NEW HOLLAND	
MADE IN INDIA, CNH Industrial	
○	

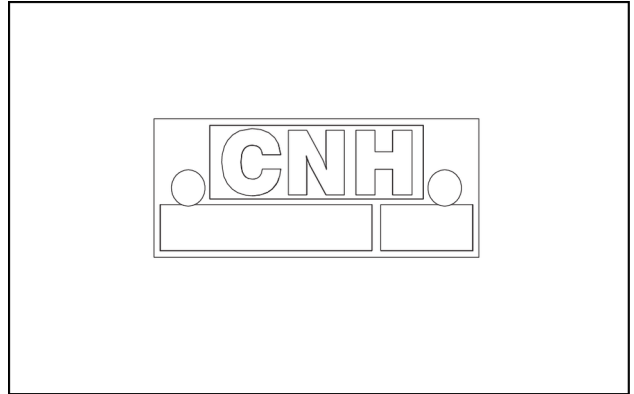
NHIL17TR00158AA 7

Hydraulic pump serial number

The hydraulic pump serial number plate is located above the hydraulic oil filter on the right-hand side of the machine.



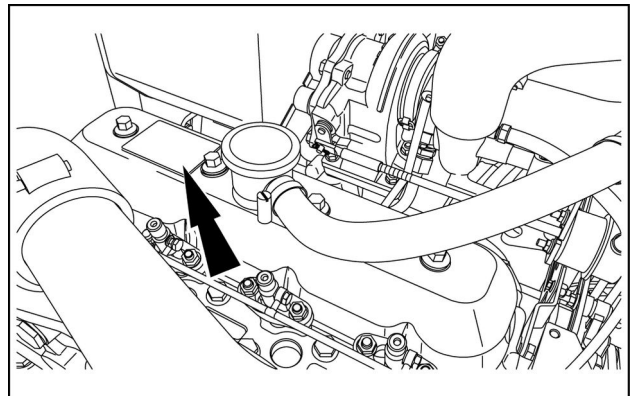
NHIL17TR00577AA 8



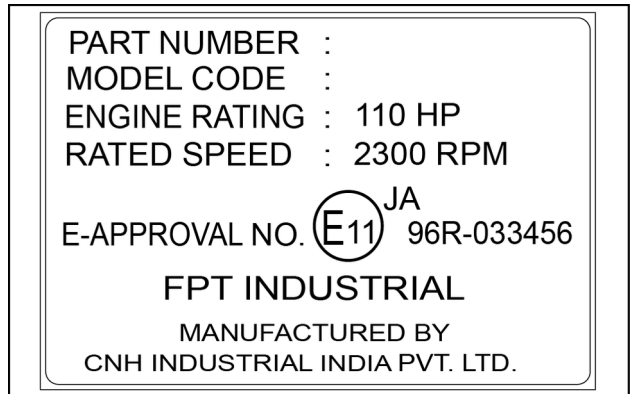
NHIL17TR00555AA 9

Engine serial number

The engine serial number decal is located on the top of the engine valve cover.



NHIL17TR00349AA 10



NHIL17TR00885AA 11

Thank you so much for reading.
Please click the “Buy Now!”
button below to download the
complete manual.



After you pay.

You can download the most
perfect and complete manual in
the world immediately.

Our support email:

ebooklibonline@outlook.com