

ORIGINAL INSTRUCTIONS

L360A
Loader

OPERATOR'S MANUAL

Part number 48124917

2nd edition English

July 2017

Replaces part number 48083528



Contents

1 GENERAL INFORMATION

Note to the owner.....	1-1
Product Identification Number (PIN).....	1-3
Machine orientation.....	1-4
Product overview	1-5

2 SAFETY INFORMATION

Safety rules.....	2-1
Safety rules.....	2-2
Foreword	2-6
Decals and plates - Safety signs	2-7

3 OPERATING INSTRUCTIONS

Commissioning the unit

Machine preparation.....	3-1
Installing the loader.....	3-2
Installing the quick-attach plate.....	3-7
Installing the quick-attach bucket.....	3-9
Installing the bucket level indicator	3-11
Connecting the hydraulics at the tractor.....	3-13

Parking the unit

Removing the quick-attach bucket	3-14
Removing the quick-attach plate	3-15
Removing the loader	3-16

4 WORKING OPERATIONS

General information

Operating the loader.....	4-1
Front remote control valve.....	4-10

5 MAINTENANCE

General information

Basic instructions.....	5-1
Daily inspection.....	5-2
Hydraulics	5-3
Consumables.....	5-4

Maintenance planning

Maintenance planning	5-5
----------------------------	-----

Daily maintenance

Front loader and bucket - Check	5-5
Front loader and bucket - Grease	5-6

First 10 hours

Front loader and bucket - Check	5-7
---------------------------------------	-----

Every 50 hours

Front loader and bucket - Check	5-7
---------------------------------------	-----

6 TROUBLESHOOTING

Symptom(s)

Front loader and bucket - Troubleshooting	6-1
---	-----

7 SPECIFICATIONS

Loader specifications	7-1
Tractor ballasting	7-3
Front loader and bucket - Weight.....	7-4
Tire pressure	7-5

8 ACCESSORIES

Accessories.....	8-1
------------------	-----

9 FORMS AND DECLARATIONS

Delivery report - Owner copy - Owner copy	9-1
Delivery report - Dealer copy - Dealer copy	9-2

1 - GENERAL INFORMATION

Note to the owner

This manual contains information concerning the adjustment and maintenance of your new equipment. You have purchased a dependable machine, but only by proper care and operation can you expect to receive the performance and long service built into this equipment. Please have all operators read this manual carefully and keep it available for ready reference.

Your CASE IH dealer will instruct you in the general operation of your new equipment. (Refer to the 'Delivery Report' at the back of this manual.) Your dealer's staff of factory-trained service technicians will be glad to answer any questions that may arise regarding the operation of your machine. Case IH Max Service is also available. Call 1-877-4CASEIH (1-877-422-7344) or email maxservice.na@cnh.com.

Your CASE IH dealer carries a complete line of genuine CASE IH service parts. These parts are manufactured and carefully inspected to insure high quality and accurate fitting of any necessary replacement parts. Be prepared to give your dealer the model and product identification number of your new equipment when ordering parts. Locate these numbers now and record them below. Refer to the 'General Information' section of this manual for the location of the model and product identification numbers of your machine.

PLEASE RECORD THE FOLLOWING INFORMATION


Loader Model

Product Identification Number (PIN)

Date Purchased

Attachment Model

Attachment Model

	<p>This is the safety alert symbol. It is used with and without signal words to alert you to potential personal injury hazards. Obey all safety messages that follow this symbol to avoid possible death or injury.</p>
---	---

WARNING

Illustrations in this manual may show protective shielding open or removed to better illustrate a particular feature or adjustment.

Replace all shields before operating the machine.

Failure to comply could result in death or serious injury.

W0012A

Improvements

CNH America LLC is continually striving to improve its products. We reserve the right to make improvements or changes when it becomes practical and possible to do so, without incurring any obligation to make changes or additions to the equipment sold previously.

Intended use

The loader was designed to mount on CASE IH approved tractors. The loader is designed to load and move materials with a variety of buckets and approved CASE IH attachments.

DO NOT use this machine for any purpose or in any manner other than as described in the manual, decals, or other product safety information provided with the machine. These materials define the machine's intended use.

Use only approved accessories and attachments designed for your machine. Consult your dealer on changes, additions or modifications that may be required for your machine. Do not make any unauthorized modifications to your machine.

Installation and operation instructions for certain hydraulic valve sets, attachments and accessories may not be included in this operator's manual.

Use the publication received with the specific item. In the case of hydraulic valves, refer to the tractor operator's manual.

NOTICE: *Loader frames are designed for specific tractor models. Do not install a loader frame on a different model than specified, without obtaining approval from CNH America LLC.*

Operator's age

All persons who will be operating this machine shall possess a valid local vehicle operating permit and/or other applicable local age work permits.

WARNING

IMPROPER OPERATION OF THIS MACHINE CAN CAUSE DEATH OR SERIOUS INJURY. MAKE SURE THAT EVERY OPERATOR:

-is instructed in the safe and proper use of this machine.

-reads and understands the operator's manual for this machine.

-reads and understands ALL safety signs on the machine.

Failure to comply could result in death or serious injury.

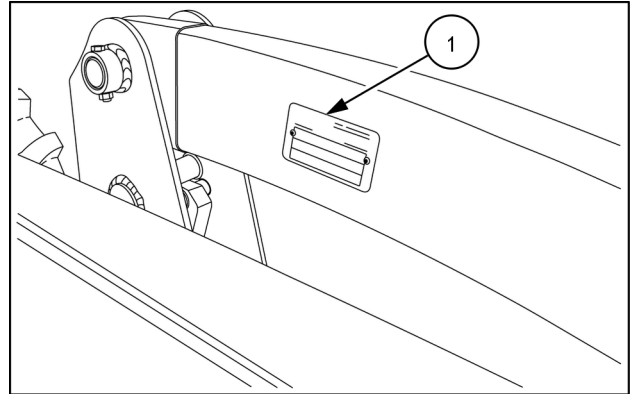
W0188A

Read and thoroughly understand this manual before operating this machine. If you are an inexperienced operator, study this manual and receive operating instructions from an experienced operator. Your dealer can assist you in learning machine operation and show you proper operating procedures. Keep this manual readily available, preferably with the machine. If the original manual is damaged, order a new one from your dealer.

Product Identification Number (PIN)

PRODUCT IDENTIFICATION PLATE

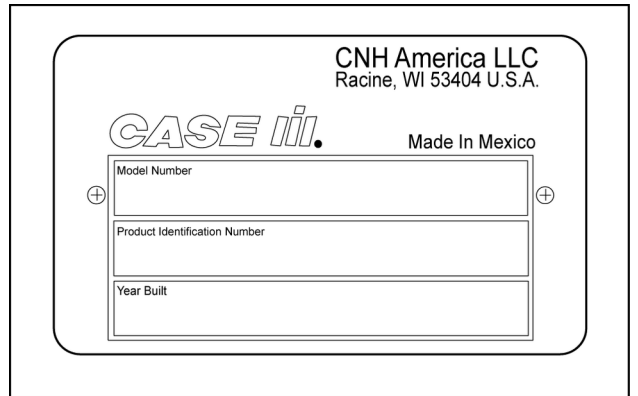
A product identification plate (1) is located on the inside of the left-hand loader frame.



NHIL14CT00112AA 1

Thin mount style (Left side loader arm)

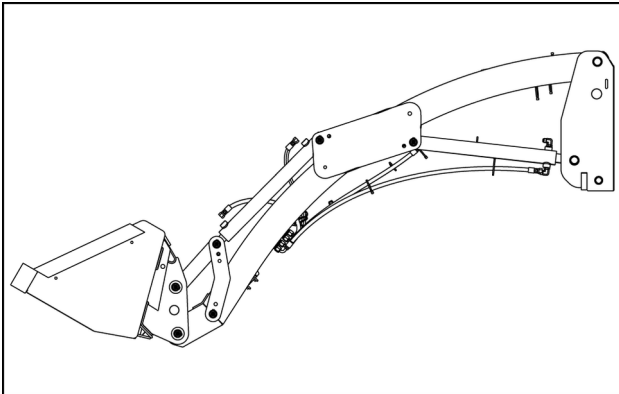
The identification numbers on this plate are important in the event that your loader should require future service.



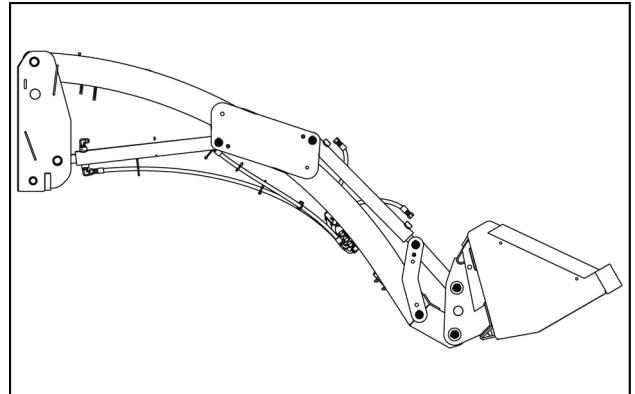
NHIL13CT00935AA 2

Machine orientation

NOTE: On this equipment, left-hand and right-hand are determined by standing behind the unit, looking in the direction of travel.

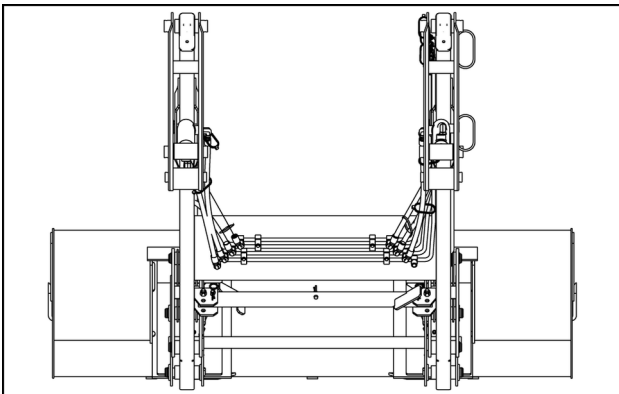


NHIL14CT00042AA 1



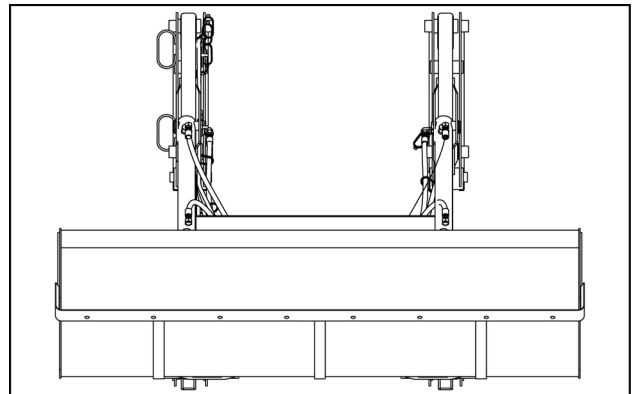
NHIL14CT00044AA 2

Left-hand view



NHIL14CT00043AA 3

Right-hand view



NHIL14CT00041AA 4

Rear view

Front view

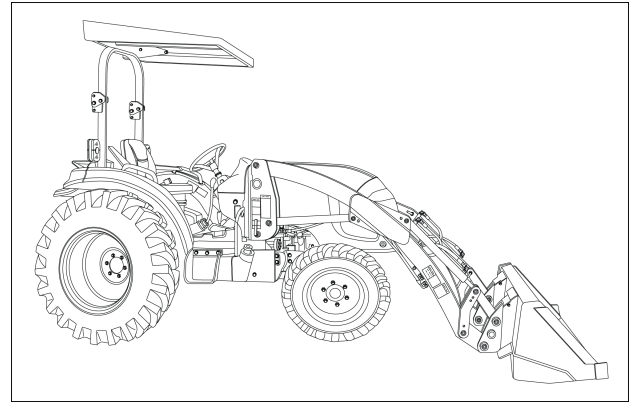
Product overview

The L360A loader and attachments are designed to be compatible with the following compact tractors.

Farmall®

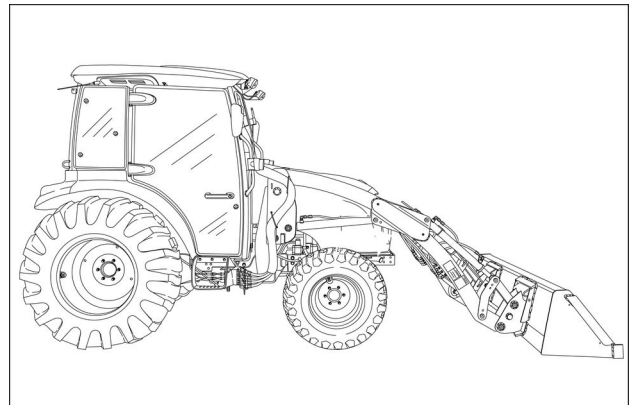
- Mechanical or Hydro-Static Transmission (HST)
 - 40C, 45C, 50C, 55C

The loader is a quick attach unit, and no tools are required to mount or dismount the loader from the tractor. The loader also has its own park stand. A pallet fork and a complete line of heavy duty and material buckets are available. As the capacities of the buckets have been matched to tractor size, the operator can choose the bucket best suited for the tractor and the job. Bucket recommendations are listed in the Specifications section of this manual.



NHIL17CT00035FA 1

Farmall® Roll-Over Protective Structure (ROPS)



NHIL16CT01406FA 2

Farmall® Cab

Buy Now



Our support email:

ebooklibonline@outlook.com