

# OPERATOR'S MANUAL

---

## New Holland 5630 TX Plus<sup>+</sup> Tractor

**Part number 48134660**

1<sup>st</sup> edition English

July 2017



# Contents

---

## 1 GENERAL INFORMATION

|                                      |     |
|--------------------------------------|-----|
| Note to the Owner .....              | 1-1 |
| General information and safety ..... | 1-2 |
| Product identification .....         | 1-4 |
| Ecology and the Environment .....    | 1-6 |

## 2 SAFETY INFORMATION

|  |      |
|--|------|
| Safety rules .....                             | 2-1  |
| Personal safety .....                          | 2-2  |
| Driving the tractor .....                      | 2-3  |
| Operating the tractor .....                    | 2-4  |
| Operating the Power Take-Off (PTO) .....       | 2-5  |
| Servicing the tractor .....                    | 2-6  |
| Diesel fuel .....                              | 2-7  |
| Instructions for driving on road .....         | 2-9  |
| International symbols .....                    | 2-12 |
| Fuel saving tips for optimum performance ..... | 2-14 |
| Trailer hitching .....                         | 2-15 |
| General and Safety Decals .....                | 2-17 |

## 3 CONTROLS AND INSTRUMENTS

### Access to operator's platform

|                        |     |
|------------------------|-----|
| Before operating ..... | 3-1 |
|------------------------|-----|

### Operator's seat

|                               |     |
|-------------------------------|-----|
| Operator seat - Adjust .....  | 3-2 |
| Seat belt (If equipped) ..... | 3-3 |

### Forward controls

|   |     |
|---|-----|
| Instrument cluster - Control identification ..... | 3-4 |
| Hand controls and switches .....                  | 3-7 |

### Left-hand side controls

|                            |     |
|----------------------------|-----|
| Clutch .....               | 3-9 |
| Power Take-Off (PTO) ..... | 3-9 |

---

|                 |      |
|-----------------|------|
| 4WD Lever ..... | 3-10 |
|-----------------|------|

## Right-hand side controls

|                               |      |
|-------------------------------|------|
| Foot Accelerator .....        | 3-11 |
| Differential lock pedal ..... | 3-11 |
| Brake pedal .....             | 3-12 |
| Parking Brake .....           | 3-12 |

## Transmission

|                           |      |
|---------------------------|------|
| Transmission .....        | 3-12 |
| Transmission speeds ..... | 3-14 |

# 4 OPERATING INSTRUCTIONS

## Commissioning the unit

|                            |     |
|----------------------------|-----|
| Before operating .....     | 4-1 |
| Running-In Procedure ..... | 4-1 |

## Starting the unit

|   |     |
|---|-----|
| Starting the tractor with jumper cables ..... | 4-3 |
| Starting the engine .....                     | 4-4 |

## Stopping the unit

|                           |     |
|---------------------------|-----|
| Stopping the engine ..... | 4-6 |
|---------------------------|-----|

# 5 TRANSPORT OPERATIONS

## Road transport

|   |     |
|---|-----|
| Carrying the tractor on a transporter ..... | 5-1 |
|---|-----|

## Recovery transport

|                          |     |
|--------------------------|-----|
| Towing the tractor ..... | 5-2 |
|--------------------------|-----|

# 6 WORKING OPERATIONS

## Intercooler and turbocharger

|                    |     |
|--------------------|-----|
| Turbocharger ..... | 6-1 |
|--------------------|-----|

---

## POWER TAKE OFF (PTO)

|   |     |
|---|-----|
| Power Take-Off (PTO) operating precautions . . . . .    | 6-2 |
| Attaching PTO driven equipment. . . . .                 | 6-3 |
| Connecting the Power Take-Off (PTO). . . . .            | 6-4 |
| Power Take-Off (PTO) protective cap and guard . . . . . | 6-4 |
| Power Take-Off (PTO) - Operating . . . . .              | 6-5 |
| Ground speed PTO . . . . .                              | 6-6 |

## THREE-POINT LINKAGE

|   |      |
|---|------|
| Three-point linkage . . . . .                 | 6-7  |
| Attaching 3-point implements. . . . .         | 6-7  |
| Lift rods, lower links and top link . . . . . | 6-9  |
| Remote control valves. . . . .                | 6-12 |
| Auxiliary hydraulic valve . . . . .           | 6-13 |
| Towing attachments . . . . .                  | 6-14 |

## HYDRAULIC SYSTEM

|   |      |
|---|------|
| Hydraulic system . . . . .                                  | 6-17 |
| Position control operation . . . . .                        | 6-18 |
| Draft Control Operation . . . . .                           | 6-19 |
| Combined position and Draft control Mixed Control . . . . . | 6-20 |
| Float Operation. . . . .                                    | 6-20 |
| Lift-O-Matic Button . . . . .                               | 6-21 |
| Height Limiter - Lift -O-Matic (If equipped). . . . .       | 6-22 |
| Sensitivity Control . . . . .                               | 6-22 |
| Response Control or Drop rate Control . . . . .             | 6-23 |
| Tap-off valve and external supply port . . . . .            | 6-23 |

## WHEEL TRACK ADJUSTMENT

|   |      |
|---|------|
| Front axle system - Adjust . . . . .                                | 6-24 |
| Track Rod - Hydrostatic Steering Right side - illustrated . . . . . | 6-25 |
| Reassembly After Setting Track Width. . . . .                       | 6-26 |
| Front wheel track adjustment . . . . .                              | 6-27 |
| Front wheels toe-in . . . . .                                       | 6-28 |
| Rear wheel track adjustment . . . . .                               | 6-29 |

## BALLASTING AND TIRES

|   |      |
|---|------|
| Ballasting of Tires Selecting ballast . . . . . | 6-30 |
| Rear wheel weights . . . . .                    | 6-32 |

---

|                             |      |
|-----------------------------|------|
| Front end weights . . . . . | 6-32 |
| Liquid ballast . . . . .    | 6-33 |
| Tire inflation . . . . .    | 6-33 |
| Tire pressure . . . . .     | 6-34 |

## 7 MAINTENANCE

### General information

|  |     |
|--|-----|
| Introduction . . . . .                         | 7-1 |
| Safety precautions . . . . .                   | 7-1 |
| During the first 50 hour operation . . . . .   | 7-1 |
| The First 50 Hours Service . . . . .           | 7-2 |
| Preventing System Contamination . . . . .      | 7-2 |
| Flexibility of Maintenance Intervals . . . . . | 7-2 |
| Lubrication and maintenance chart . . . . .    | 7-2 |
| Fueling the tractor . . . . .                  | 7-3 |
| General specification . . . . .                | 7-3 |
| Fuel storage . . . . .                         | 7-4 |
| Guards . . . . .                               | 7-5 |

### Maintenance planning

|   |     |
|---|-----|
| Maintenance - Maintenance chart . . . . . | 7-7 |
|---|-----|

### EVERY 10 HOURS OF OPERATION OR DAILY

|  |      |
|--|------|
| Check engine oil level . . . . .                 | 7-9  |
| Radiator coolant level check . . . . .           | 7-10 |
| Hydrostatic steering oil level . . . . .         | 7-10 |
| Fuel filters - Drain fluid . . . . .             | 7-11 |
| Fuel-water separator filter - Cleaning . . . . . | 7-11 |

### EVERY 50 HOURS

|   |      |
|---|------|
| Clutch Pedal Free Play - Check . . . . .                            | 7-12 |
| Brake pedals - Adjust . . . . .                                     | 7-13 |
| Parking brake or parking lock - Check . . . . .                     | 7-13 |
| Wheel hub - Check . . . . .   | 7-14 |
| Tire Pressures and Condition Tyre Pressures and Condition . . . . . | 7-14 |
| Fan/alternator belt - adjustment . . . . .                          | 7-14 |
| Grease fittings . . . . .   | 7-15 |
| Battery - Check . . . . .   | 7-17 |
| Four-Wheel Drive (4WD) axle - Check . . . . .                       | 7-17 |

---

## EVERY 300 HOURS

|  |      |
|--|------|
| Air cleaner - Cleaning .....                           | 7-18 |
| Fuel filters - Replace .....                           | 7-22 |
| Fuel Feed Pump Filter .....                            | 7-23 |
| Hydrostatic steering oil filter .....                  | 7-23 |
| Engine - Change fluid .....                            | 7-24 |
| Engine oil filter - Replace .....                      | 7-25 |
| Transmission/hydraulics oil level .....                | 7-25 |
| Hydraulic filter - cleaning .....                      | 7-26 |
| Front Axle Reduction Hubs - 4WD .....                  | 7-26 |
| 4WD front axle swivel bearings .....                   | 7-27 |
| Drive Shaft Sleeve for 4WD Front Axle Connection ..... | 7-27 |

## EVERY 600 HOURS

|  |      |
|--|------|
| Fuel filters - Replace .....                           | 7-27 |
| Camshaft Tappets - Adjust .....                        | 7-28 |
| Transmission oil vapor breather - clean .....          | 7-28 |
| Clean, Re-grease and Adjust Front Wheel Bearings ..... | 7-29 |
| Service Fuel Injectors .....                           | 7-30 |
| Front wheel toe-in - adjust .....                      | 7-30 |

## EVERY 1200 HOURS

|   |      |
|---|------|
| Change Transmission/Hydraulics Oil .....                      | 7-30 |
| Change the final drive oil .....                              | 7-31 |
| Radiator - Drain fluid .....                                  | 7-31 |
| Steering oil reservoir - change fluid .....                   | 7-33 |
| Front Axle Housing Oil Level - 4WD .....                      | 7-33 |
| Draining the Oil from the Front Axle Final Drives - 4WD ..... | 7-34 |
| Final drive - 4 WD .....                                      | 7-34 |
| Fuel tanks - Cleaning .....                                   | 7-34 |

## GENERAL MAINTENANCE

|                                     |      |
|-------------------------------------|------|
| Fuel injection system - Bleed ..... | 7-35 |
| Engine idle speed .....             | 7-35 |
| Headlight - Adjust .....            | 7-36 |
| Work light - Adjust .....           | 7-36 |
| Stop/Turn/Position Lights .....     | 7-36 |
| Canopy lights - Adjust .....        | 7-37 |
| Fuses - replacement .....           | 7-37 |
| Electrical systems - Charging ..... | 7-39 |

---

## Storage

|                       |      |
|-----------------------|------|
| Vehicle Storage ..... | 7-43 |
|-----------------------|------|

## 8 TROUBLESHOOTING

### Fault code resolution

|                                     |     |
|-------------------------------------|-----|
| Maintenance - Troubleshooting ..... | 8-1 |
|-------------------------------------|-----|

## 9 SPECIFICATIONS

|   |     |
|---|-----|
| General specifications .....                          | 9-1 |
| Engine - Technical Data .....                         | 9-3 |
| Engine cooling system - General specification .....   | 9-3 |
| Clutch - Technical Data .....                         | 9-3 |
| Power Take-Off (PTO) - Technical Data .....           | 9-3 |
| Rear three-point hitch linkage - Technical Data ..... | 9-4 |
| Hydraulic systems - Technical Data .....              | 9-4 |
| Electrical system - Technical Data .....              | 9-4 |
| Steering - Technical Data .....                       | 9-4 |
| Brakes and controls - Technical Data .....            | 9-5 |
| Maintenance - General specification .....             | 9-5 |

---

# 1 - GENERAL INFORMATION

## Note to the Owner

Congratulations on your purchase of a 5630 TX Plus+ tractor. You are now a proud owner of the world's premium brand tractor and one that is also a firm favorite of Indian farmers.

The 3032 / 3037 / 3230, 3510 / 4010 / 4510 / 4710, 3630TX Plus+ / 3630TX Super / 3600-2TX, 3600-2TX All Rounder Plus+, 5630 TX Plus+, 5500 / 6500 / 7500 and 6010 / 6510 / 7510 / 8010 / 9010 tractors are manufactured by CNH Industrial (India), the World's leading manufacturer of agricultural tractors, combine harvesters and other agricultural equipment. NEW HOLLAND operates in more than 160 countries and nearly 4 crore machines are at work worldwide. Our global network is made up of nearly 12,000 dealers extending product support, customer service and spare parts back-up to our customers.

The company's mission is "to be a customer-driven organization". Together with our dealer network we will provide you the best customer support to make sure trouble-free performance and enable you to maximize tractor productivity. Each dealer is trained by NEW HOLLAND and is equipped to give you the best possible service support.

The following pages of the operator's manual will provide you detailed information on operating the tractor, safety and regular maintenance. Your dealer will personally install your new tractor, explain the company's warranty policy and give full details of your tractor care. However, in case you have any further specific product or service related requirement, kindly contact as under.

Service department

CNH Industrial (India) Pvt. Ltd.

Industrial plot number 3,

Udyog Kendra, Greater Noida

District. : Gautam Budh Nagar (Uttar Pradesh) - 201 306

Customer care toll free : 1800-419-0124 (Timings 10.00 a.m to 6.00 p.m)

Website : [www.newhollandindia.co.in](http://www.newhollandindia.co.in)

CIN : U29220MH1992PTC069675

We look forward to a long beneficial relationship.



## General information and safety

### General

This Manual has been prepared to assist you in the correct procedure for running-in, driving, operating and for the maintenance of your new tractor. Your tractor, which is designed to power and propel itself, is intended for use in normal and customary agricultural applications.

Read this Manual carefully and keep it in a convenient place for future references. If at any time you require advice concerning your tractor, do not hesitate to contact your Authorised Dealer. He has company trained personnel, genuine manufacturers' parts and the necessary equipment to carry out all your service requirements.

Your tractor has been designed and built to give maximum performance, economy and ease of operation under a wide variety of operating conditions. Prior to delivery, the tractor was carefully inspected, both at the factory and by your dealer to ensure that it reaches you in best condition. To maintain this condition and trouble-free operation, it is important that the routine services, as specified in chapter - 7 of this manual, are carried out at the recommended intervals.

### Cleaning the tractor

While cleaning the tractor, particularly when using a high pressure tractor washing equipment precaution has to be taken to safeguard the electronic components and the electrical connections. The pressure generated by some of these machines is such that complete protection against water ingress cannot be guaranteed. While washing the tractor, using a high pressure washing machine, do not stand too close to the tractor and avoid directing the jet

at electrical connections, breathers, seals, filler caps, etc. Never direct a cold water jet at a hot engine or exhaust.

### Safety

Chapter - 2 includes the list of precautions to be observed to ensure your safety and safety of others. Read the safety precautions and follow the advice offered before operating the tractor

### First 50 hour service

After you have operated the tractor for 50 hours, take your tractor, together with warranty booklet to your dealer. He will then perform the manufacturer recommended 50 hour service and complete the service report. Ensure the completion of the coupon and signature of service manager or the dealer.

### Service parts

It should be pointed out that genuine parts have been examined and approved by the company. The installation and usage of 'non-genuine' products can have negative effects upon the design characteristics of your tractor and thereby affect its safety. The company is not liable for any damage caused by the use of 'non-genuine' parts and accessories.

Only Genuine New Holland replacement parts should be used. Use of non-genuine parts may invalidate legal approvals associated with this product.

It is prohibited to carry out any modifications in the tractor unless specifically authorised, in writing, by the service department of the company.

## **Warranty**

Your tractor is warranted according to the current legislation in our country and with contractual agreements reached with the dealer at the time of sale. However, the warranty is no longer valid if the rules and instructions for the use and maintenance of the tractor described in this manual are

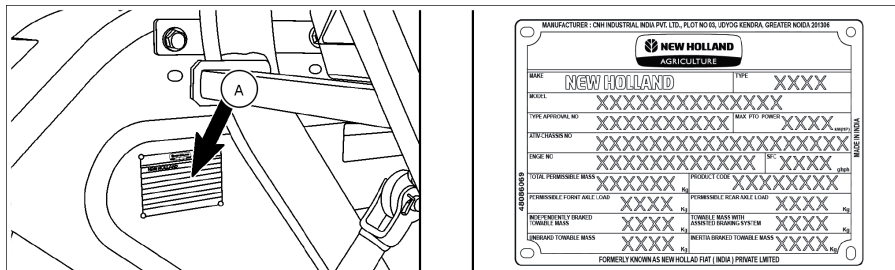
not observed. For more details on warranty, please refer warranty booklet supplied along with this operator's manual.

**NOTE:** *Reference positions (left, right, front, and rear) of components and decals indicated in this operator's manual are taken with a view when operator is seated on the operator's seat.*

## Product identification

### Vehicle identification plate (VIP)

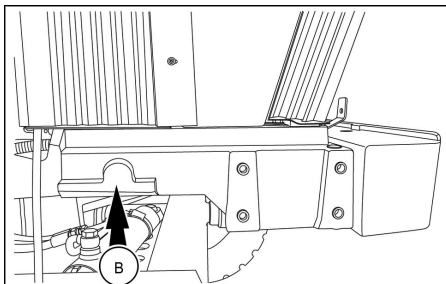
The VIP decal (A) is located on the left hand side fender. The VIP contains the tractor serial number, model, engine number, product code and other necessary details. Record the information given in decal for quick reference.



GNIL17TR00111FA 1

### Vehicle Identification number (VIN)

The VIN (B) or tractor serial number is stamped on the right-hand side of the front axle support. These numbers are also repeated on the VIP.



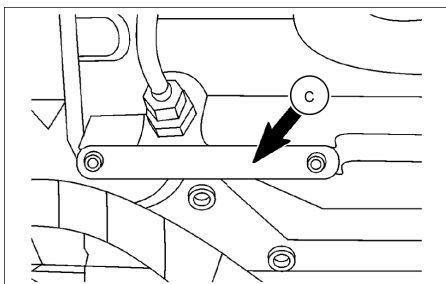
GNIL15TR00143AA 2

### Engine identification

The engine serial number (C) is stamped on the left-hand side of the engine cylinder block. The engine serial number is also repeated on VIP. Record the engine serial number below for quick reference.

Engine serial number :- \_\_\_\_\_

—



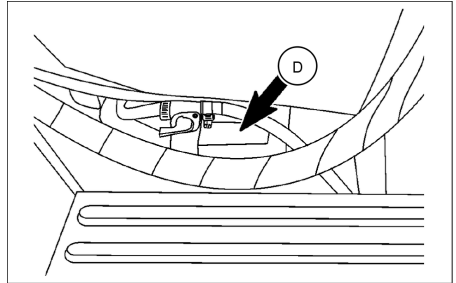
GNIL16TR00107AA 3

### Transmission identification

The transmission serial number **(D)** is stamped on the right-hand side of the transmission housing below the fuel tank. Record the transmission serial number below for quick reference.

Transmission serial number :-

\_\_\_\_\_



GNIL16TR00108AA

## Ecology and the Environment

Soil, air and water are vital factors of agriculture and life in general. Where legislation does not yet rule the treatment of some of the substances which are required by advanced technology, common sense should govern the use and disposal of products of a chemical and petrochemical nature.

The following are recommendations which may be of assistance:

1. Become acquainted with and ensure that you understand the relative legislation applicable to your country.
2. Where no legislation exists, obtain information from suppliers of oils, filters, batteries, fuels, cleaning agents, etc., with regard to their effect on man and nature and how to safely store, use and dispose of these substances.

### Helpful hints

1. Avoid filling tanks using open containers or inappropriate pressurized fuel delivery systems which may cause excessive spillage.
2. In general, avoid skin contact with all fuels, oils, acids, solvents, etc. Most of them

contain substances which can be harmful to your health

3. Modern oils contain additives. Do not burn contaminated fuels and waste oils in ordinary heating systems.
4. Avoid spillage while draining off used engine coolant mixtures, engine oil, gearbox and hydraulic oil, brake fluids, etc. Do not mix drained brake fluids or fuels with lubricants. Store them safely until they can be disposed of in a proper way to comply with local legislation and available resources.
5. Modern coolant mixtures, i.e. antifreeze and other additives, should be replaced every 12 months or **1200 h**. They should not be allowed to get into the soil but should be collected and disposed of safely.
6. Repair any leaks or defects in the engine cooling or hydraulic system immediately.
7. Do not increase the pressure in a pressurized circuit as this may lead to the component explosion.
8. Protect hoses during welding as penetration of weld splatter may burn a hole or weaken them, causing the loss of oils, coolant, etc.

Thank you so much for reading.  
Please click the “Buy Now!”  
button below to download the  
complete manual.



After you pay.

You can download the most  
perfect and complete manual in  
the world immediately.

Our support email:

[ebooklibonline@outlook.com](mailto:ebooklibonline@outlook.com)