

OPERATOR'S MANUAL

3032

Tractor

Part number 48134665

1st edition English

June 2017



Contents

1 GENERAL INFORMATION

| | |
|-----------------------------------|-----|
| Note to the Owner | 1-1 |
| Product identification | 1-2 |
| Ecology and the Environment | 1-4 |

2 SAFETY INFORMATION

| | |
|--|------|
| Safety rules | 2-1 |
| Personal safety | 2-2 |
| Driving the tractor | 2-3 |
| Operating the tractor | 2-4 |
| Operating the Power Take-Off (PTO) | 2-5 |
| Servicing the tractor | 2-6 |
| Diesel fuel | 2-7 |
| Trailer hitching | 2-9 |
| Instructions for Driving on Road | 2-11 |
| General and Safety Decals | 2-14 |
| International symbols | 2-18 |
| Fuel saving tips for optimum performance | 2-20 |

3 CONTROLS AND INSTRUMENTS

Access to operator's platform

| | |
|------------------------|-----|
| Before operating | 3-1 |
|------------------------|-----|

Operator's seat

| | |
|-------------------------------|-----|
| Operator seat - Adjust | 3-2 |
| Seat belt (If equipped) | 3-3 |

Forward controls

| | |
|---|-----|
| Instrument cluster - Control identification | 3-4 |
| Hand controls and switches | 3-6 |

Left-hand side controls

| | |
|--------------------|-----|
| Clutch pedal | 3-8 |
| PTO Lever | 3-8 |

Right-hand side controls

| | |
|-------------------------------|------|
| Parking brake | 3-9 |
| Foot Accelerator | 3-9 |
| Brake pedal | 3-10 |
| Differential lock pedal | 3-10 |

Transmission

| | |
|---|------|
| Transmission - Control identification | 3-11 |
|---|------|

4 OPERATING INSTRUCTIONS

Commissioning the unit

| | |
|----------------------------|-----|
| Before operating | 4-1 |
| Running-in procedure | 4-1 |

Starting the unit

| | |
|---|-----|
| Starting the tractor with jumper cables | 4-3 |
| Engine - Start | 4-4 |

Stopping the unit

| | |
|---------------------|-----|
| Engine - Stop | 4-6 |
|---------------------|-----|

5 TRANSPORT OPERATIONS

Road transport

| | |
|---|-----|
| Carrying the tractor on a transporter | 5-1 |
|---|-----|

Recovery transport

| | |
|--------------------------|-----|
| Towing the tractor | 5-2 |
|--------------------------|-----|

6 WORKING OPERATIONS

Power Take-Off (PTO)

| | |
|--|-----|
| Power Take-Off (PTO) - Overview | 6-1 |
| Power Take-Off (PTO) - Operating | 6-1 |
| Towing attachments | 6-3 |

THREE-POINT LINKAGE

| | |
|---------------------------|-----|
| Three-point linkage | 6-5 |
|---------------------------|-----|

| | |
|---|-----|
| Attaching 3-point implements | 6-5 |
| Lift rods, lower links and top link | 6-7 |

Hydraulic systems

| | |
|---|------|
| Hydraulic systems - Check | 6-10 |
| Position control operation | 6-11 |
| Draft Control Operation | 6-12 |
| Combined position and Draft control. | 6-12 |
| Float Operation | 6-13 |
| Lift-O-Matic Button | 6-13 |
| Sensitivity Control | 6-14 |
| Response Control or Drop rate Control | 6-14 |
| Diverter valve | 6-15 |
| Hydraulic trailer coupling. | 6-16 |

WHEEL TRACK ADJUSTMENT

| | |
|--|------|
| Front wheel track adjustment (two wheel drive) | 6-17 |
| front wheels toe-in adjustment | 6-17 |
| Rear wheel track adjustment | 6-18 |
| Mechanical Steering | 6-19 |
| Hydrostatic Steering | 6-19 |

BALLASTING AND TIRES

| | |
|---|------|
| Ballasting of Tires – Selecting ballast | 6-20 |
| Rear wheel weights | 6-22 |
| Front end weights. | 6-22 |
| Liquid ballast | 6-23 |
| Tire inflation. | 6-23 |
| Front wheels - Tire pressure. | 6-24 |
| Rear wheel - Tire pressure | 6-25 |

7 MAINTENANCE

General information

| | |
|--|-----|
| Introduction | 7-1 |
| Safety precautions | 7-1 |
| During the first 50 hour operation | 7-1 |
| The First 50 Hours Service | 7-1 |
| Preventing System Contamination | 7-2 |
| Flexibility of Maintenance Intervals | 7-2 |

| | |
|--|-----|
| Maintenance chart | 7-2 |
| Fuelling The Tractor | 7-2 |
| Fuel Requirements | 7-3 |
| Diesel fuel quality specifications | 7-3 |
| Fuel storage | 7-4 |
| Filling the fuel tank | 7-4 |
| Guards | 7-5 |

Maintenance planning

| | |
|-------------------------|-----|
| Maintenance chart | 7-7 |
|-------------------------|-----|

Every 10 Hours of Operation or Daily (Whichever Occurs First)

| | |
|-------------------------------------|------|
| Check engine oil level | 7-8 |
| Engine cooling system - Check | 7-9 |
| Air pre-cleaner - Cleaning | 7-9 |
| Air Cleaner Oil Bowl- Clean | 7-10 |
| Power steering oil | 7-10 |
| Drain water from Fuel Filter | 7-11 |

EVERY 50 HOURS

| | |
|--|------|
| Air pre-cleaner - Cleaning | 7-11 |
| Clutch pedal free play - check | 7-11 |
| Brake pedal free play - check | 7-12 |
| Wheel nut and bolt torque | 7-12 |
| Tire pressure and condition | 7-13 |
| Fan / alternator belt tension adjust | 7-13 |
| Maintenance - Grease | 7-13 |
| Battery - Check | 7-16 |
| Fuel Injection Pump Oil level-Check | 7-16 |

EVERY 300 HOURS

| | |
|---|------|
| Fuel filters - Replace | 7-16 |
| Fuel Feed Pump Strainer- Clean | 7-17 |
| Fuel Injection Pump Oil-Change | 7-18 |
| Change engine oil | 7-18 |
| Engine oil filter - Replace | 7-19 |
| Power steering oil | 7-19 |
| Transmission/hydraulics oil level | 7-20 |
| Final drive oil level | 7-20 |
| Hydraulic oil filter | 7-20 |
| Rocker arm - Adjust | 7-21 |

EVERY 600 HOURS

| | |
|---|------|
| Fuel filters - Replace | 7-21 |
| Transmission oil vapor breather - Cleaning | 7-21 |
| Clean, re-grease and adjust the front wheel bearing | 7-22 |
| Fuel injectors - servicing | 7-23 |
| Toe-in adjustment | 7-23 |

EVERY 1200 HOURS

| | |
|---|------|
| Transmission/Hydraulic oil - change fluid | 7-23 |
| Final Drive Oil - Change | 7-24 |
| Radiator - Drain fluid | 7-24 |
| Power steering oil | 7-26 |
| Steering oil reservoir - change fluid | 7-26 |

GENERAL MAINTENANCE

| | |
|-------------------------------------|------|
| Fuel injection system - Bleed | 7-27 |
| Engine idle speed | 7-27 |
| Headlight - Adjust | 7-28 |
| Work light - Check | 7-28 |
| Bulb replacement | 7-28 |
| Fuse replacement | 7-29 |
| Battery charge - Check | 7-30 |

Vehicle Storage

| | |
|-----------------------|------|
| Tractor storage | 7-33 |
|-----------------------|------|

8 TROUBLESHOOTING

Fault code resolution

| | |
|-------------------------------------|-----|
| Maintenance - Troubleshooting | 8-1 |
|-------------------------------------|-----|

9 SPECIFICATIONS

| | |
|-------------------------------|-----|
| Maintenance - Dimension | 9-1 |
| Engine | 9-2 |
| Cooling system | 9-2 |
| Clutch System | 9-3 |
| Power Take-Off (PTO) | 9-3 |
| Three-point linkage | 9-3 |

| | |
|-----------------------------------|-----|
| Hydraulic system | 9-3 |
| Electrical systems | 9-3 |
| Steering system | 9-4 |
| Brakes | 9-4 |
| Lubrication and maintenance | 9-4 |



1 - GENERAL INFORMATION

Note to the Owner

Congratulations on your purchase of a NEW HOLLAND 3032 tractor. You are now a proud owner of the world's premium brand tractor and one that is also a firm favorite of the Indian farmer.

The 3037 / 3230, 3510 / 4010 / 4510 / 4710, 3630TX Plus+ / 3630TX Super / 3600-2TX, 3600-2TX All Rounder Plus+, 5630 TX Plus+, 5500 / 6500 / 7500 and 6010 / 6510 / 7510 / 8010 / 9010 tractors are manufactured by CNH Industrial (India), the World's leading manufacturer of agricultural tractors, combine harvesters and other agricultural equipment. NEW HOLLAND operates in more than 160 countries and nearly 4 crore machines are at work worldwide. Our global network is made up of nearly 12,000 dealers extending product support, customer service and spare parts back-up to our customers.

The Company's mission is "to be a customer-driven organization". Together with our dealer network we will provide you the best in customer support to ensure trouble free performance and enable you to maximise tractor productivity. Each dealer is trained by New Holland and is equipped to give you the best possible service support.

The following pages of the operator's manual will provide you detailed information on operating the tractor, safety and regular maintenance. Your Dealer will personally install your new tractor, explain the Company's warranty policy and give full details of your tractor care. However, in case you have any further specific product or service related requirement, kindly contact as under

Service Department

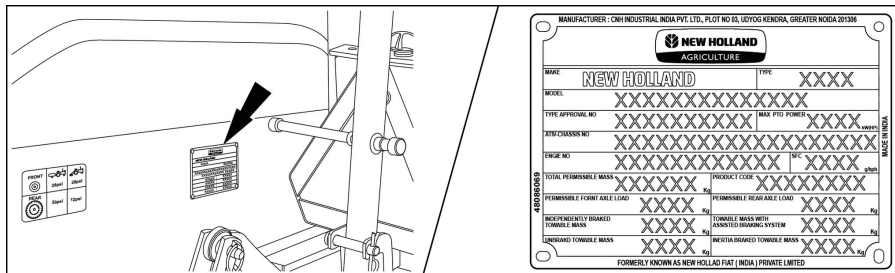
CNH Industrial (India) Pvt. Ltd.

Industrial Plot No. 3 ,
Udyog Kendra, Greater Noida,
Distt. : Gautam Budh Nagar (Uttar Pradesh) - 201 306
Customer Care Toll Free : 1800-419-0124 (Timings 10.00 a.m to 6.00 p.m)
Website : www.newhollandindia.co.in
CIN : U29220MH1992PTC069675
We look forward to a long beneficial relationship.

Product identification

Vehicle identification plate (VIP)

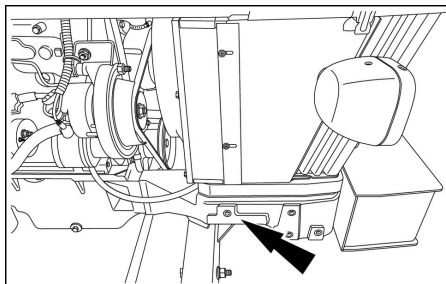
The VIP decal is located on the left hand side of the fender. The first line represents the tractor make followed by type, while the second line represents the model. The fourth line represents the chassis number. The fifth line represents the engine number followed by specific fuel consumption. Record the information in image 1 for quick reference.



GNIL17TRO0065FA 1

Vehicle identification number (VIN)

The tractor serial number, unit code and engine number are stamped on the right-hand side of the front axle support. These numbers are also repeated on the “vehicle identification plate”.

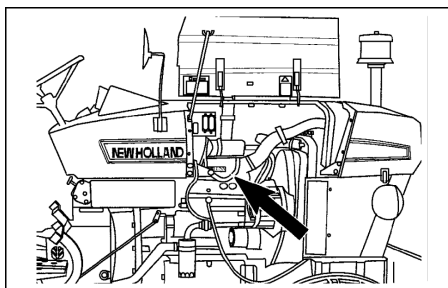


GNIL15TR00149AA 2

Engine Identification

The engine serial number stamped on right side of the engine cylinder block. Record the engine serial no. below for quick reference.

Engine serial no. _____



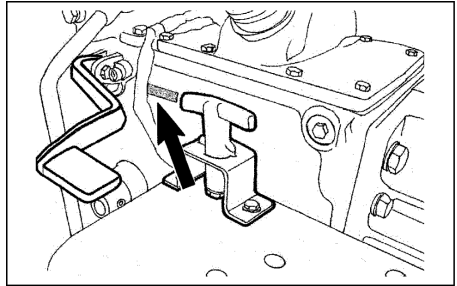
GNIL15TR00053AA 3

Transmission Identification

The transmission serial number is stamped on right side of transmission housing below driver seat. This information is repeated on tractor identification decal. Record the transmission serial number below for quick reference.

Transmission serial number

— _____



GNIL15TR00054AA 4

Ecology and the Environment

Soil, air and water are vital factors that impact agriculture and life in general. Where legislation does not yet rule the treatment of some of the substances which are required by advanced technology, common sense should govern the use and disposal of products of a chemical and petrochemical nature.

The following are recommendations which may be of assistance:

- Become acquainted with and ensure that you understand the legislation applicable to your country.
- Where no legislation exists, obtain information from suppliers of oils, filters, batteries, fuels, cleaning agents, etc., with regard to their effect on man and nature and how to safely store, use and dispose off these substances.

Helpful hints

1. Avoid filling tanks using open containers or inappropriate pressurized fuel delivery systems which may cause excessive spillage. They contain substances which can be harmful to your health.
2. Modern oils contain additives. Do not burn contaminated fuels and/or waste oils in ordinary heating systems.
3. Avoid spillage while draining used engine coolant mixtures, engine, gearbox and hydraulic oils, brake fluids, etc. Do not mix drained brake fluids or fuels with lubricants. Store them safely until they can be disposed off in a proper way to comply with local legislation.
4. Modern coolant mixtures, i.e. antifreeze and other additives, should be replaced every 12 months or 1200 Hours. They should not be allowed to get into the soil but should be collected and disposed off safely.
5. Repair any leaks or defects in the engine cooling or hydraulic system immediately.
6. Protect hoses during welding as penetration of weld splatter may burn a hole or weaken them, causing the losses of oil, coolant etc.

2 - SAFETY INFORMATION

Safety rules

A careful operator is the best operator. Most accidents can be avoided by observing certain precautions. To help prevent accidents, read and take the following precautions before driving, operating or servicing the tractor. Equipment should be operated only by those who are responsible, trained & authorized to do so.

Precautionary statements

Throughout this manual you will see text, preceded by the words NOTE, ATTENTION, CAUTION, WARNING or DANGER. Such text has the following significance

Machine Safety

NOTE: *This text stresses a correct operating technique or procedure.*

NOTICE: *This text informs the reader about something that he needs to know to prevent minor machine damage if a certain procedure is not followed*

General safety rules

Modifications made to this machine may increase the likelihood or potential for debris accumulations that would normally not be present. Modifications include frame-mounted attachments, plates, screens, or other aftermarket equipment. Operators of modified machines must be aware of accumulations of organic debris and/or material and overall machine cleanliness.

Modified machines require additional and more frequent inspection and cleaning during usage. The machine may require inspection and cleaning multiple times per day during usage. Operators must be aware of the operating environment and conditions. Operators must take appropriate actions to maintain the machines during use. In particular, pay attention to the following machine areas:

1. In and around the engine compartment
2. Hot exhaust components
3. Moving, turning, or rotating machine components

Operators that operate the machine in a typical applications and/or conditions must be aware of accumulations of organic debris and/or material and overall machine cleanliness. Pay particular attention where material accumulations are possible or may result.

Machines that operate in a typical applications or conditions require additional and more frequent inspection and cleaning during usage. The machine may require inspection and cleaning multiple times per day during usage. Operators must be aware of the operating

environment and conditions. Operators must take appropriate actions to maintain the machines during use. In particular, pay attention to the following machine areas:

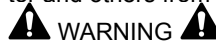
1. In and around the engine compartment
2. Hot exhaust components
3. Moving, turning, or rotating machine components

Personal safety



CAUTION

The word CAUTION is used where a safe behavioral practice, according to operating & maintenance instructions and common safety practices will protect the operator and others from accident involvement.



WARNING

The word WARNING denotes a potential or hidden hazard which could possibly cause serious injury. It is used to warn.



DANGER

The word DANGER denotes a forbidden practice in connection with a serious hazard

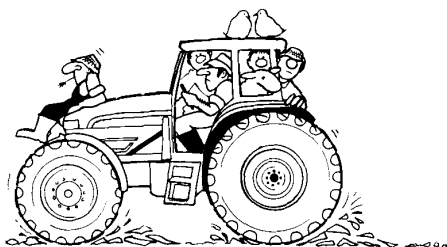
Failure to follow the CAUTION, WARNING and DANGER instructions may result in serious injury to body or even death.

THE TRACTOR

Throughout this manual you will see text, preceded by the words NOTE, ATTENTION, IMPORTANT, CAUTION, WARNING or DANGER. Such text has the following significance:

1. Read this Operator's Manual carefully before using the tractor. Lack of operating knowledge can lead to accidents.
2. To prevent falls, use the hand rails and step plates while getting on and off the tractor. Keep steps and platform clear of mud and debris

3. Replace all missing, illegible or damaged safety decals.
4. Keep safety decals free of dirt or grime.



1D0B2014015

1

5. Do not permit anyone, except the operator to ride the tractor. It is unsafe for extra passengers to travel.
6. Always keep children away from the tractor and farm machinery
7. You or any body else should not modify or alter tractor or any of its components without consulting your authorized dealer.
8. Install all guards before starting the engine or operating the tractor.
9. Tractor wheels are very heavy. Handle with care and ensure while storing that they should not topple down and cause injury to anybody.

Thank you so much for reading.
Please click the “Buy Now!”
button below to download the
complete manual.



After you pay.

You can download the most
perfect and complete manual in
the world immediately.

Our support email:

ebooklibonline@outlook.com