

ORIGINAL INSTRUCTIONS

OPERATOR'S MANUAL

100LC

Loader

Part number 51410108

1st edition English

December 2017



Contents

1 GENERAL INFORMATION

Note to the Owner	1-1
Intended use.....	1-2
Product Identification Number (PIN).....	1-4
Operator's manual storage on the machine	1-5
Machine orientation.....	1-6
Machine components.....	1-7

2 SAFETY INFORMATION

Safety rules and signal word definitions	2-1
Safety rules.....	2-2
Do not operate tag.....	2-6
Ecology and the environment	2-7
Safety signs	2-8
Instructional signs	2-12

3 CONTROLS AND INSTRUMENTS

Forward controls

Two-spool loader control valve lever	3-1
--	-----

4 OPERATING INSTRUCTIONS

Commissioning the unit

Machine preparation.....	4-1
Installing the loader.....	4-2
Installing the bucket	4-7

Parking the unit

Removing the loader	4-8
Removing the bucket.....	4-11

5 WORKING OPERATIONS

General information

Operating the two-spool loader control valve.....	5-1
Bucket level indicator.....	5-2
Operating the loader.....	5-3
Ballast weight requirements	5-12
Ballast options	5-13

6 MAINTENANCE

General information

Basic instructions	6-1
--------------------------	-----

Daily inspection	6-2
Consumables	6-3

Maintenance planning

Maintenance chart	6-4
-------------------------	-----

Every 8 hours or daily

Front loader and bucket - Check	6-5
Front loader and bucket - Grease	6-6

First 10 hours

Front loader and bucket - Check	6-7
---------------------------------------	-----

Every 25 hours

Front loader and bucket - Check	6-7
---------------------------------------	-----

7 TROUBLESHOOTING

Symptom(s)

Troubleshooting - Foreword	7-1
Front loader and bucket - Troubleshooting	7-1

8 SPECIFICATIONS

Loader specifications	8-1
Tire inflation pressures	8-3

9 FORMS AND DECLARATIONS

Pre-delivery report - Dealer's copy	9-1
Pre-delivery report - Owner's copy	9-3

1 - GENERAL INFORMATION

Note to the Owner

This manual contains information concerning the adjustment and maintenance of your new equipment. You have purchased a dependable machine, but only by proper care and operation can you expect to receive the performance and long service built into this equipment. Please have all operators read this manual carefully and keep it available for ready reference.

Your NEW HOLLAND dealer will instruct you in the general operation of your new equipment. (Refer to the 'Delivery Report' at the back of this manual.) Your dealer's staff of factory-trained service technicians will be glad to answer any questions that may arise regarding the operation of your machine. New Holland Top Service is also available. Call 1-866-NEWHLND (1-866-639-4563) or email na.topservice@cnh.com.

Your NEW HOLLAND dealer carries a complete line of genuine NEW HOLLAND service parts. These parts are manufactured and carefully inspected to insure high quality and accurate fitting of any necessary replacement parts. Be prepared to give your dealer the model and product identification number of your new equipment when ordering parts. Locate these numbers now and record them below. Refer to the 'General Information' section of this manual for the location of the model and product identification numbers of your machine.

PLEASE RECORD THE FOLLOWING INFORMATION


Loader Model

Product Identification Number (PIN)

Date Purchased

Attachment Model

Attachment Model

	<p>This is the safety alert symbol. It is used with and without signal words to alert you to potential personal injury hazards. Obey all safety messages that follow this symbol to avoid possible death or injury.</p>
---	---

⚠ WARNING

Illustrations in this manual may show protective shielding open or removed to better illustrate a particular feature or adjustment.

Replace all shields before operating the machine.

Failure to comply could result in death or serious injury.

W0012A

Improvements

CNH America LLC is continually striving to improve its products. We reserve the right to make improvements or changes when it becomes practical and possible to do so, without incurring any obligation to make changes or additions to the equipment sold previously.

Intended use

⚠ CAUTION

**Equipment failure could cause accident or injury!
Never exceed the maximum safe working load of the loader.
Failure to comply could result in minor or moderate injury.**

C0161A

Your loader is designed and made to move material(s), dig, grade, and level, although within some physical limits. The working speed and performance may depend on a number of various parameters, such as weather and terrain conditions. Though the machine is designed to perform satisfactory in most materials and conditions, there may be a number of combinations of above parameters, for which there is severe degradation of performance of the machine. If you notice degradation of performance, contact your NEW HOLLAND dealer for assistance. He may have useful information for improvements, or a kit may be available to enhance the performance.

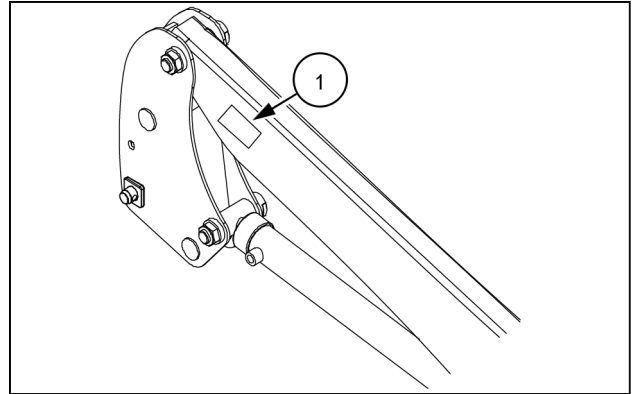
- The loader was designed to mount on NEW HOLLAND approved tractors. The loader is designed to load and move materials with a variety of buckets and approved NEW HOLLAND attachments.
- Do not use the machine for another purpose than intended by the manufacturer and outlined in this manual.
- Do not use the machine beyond its limits of terrain gradient and stability as outlined further in this manual. Using the machine beyond these limits may result in roll-over or tip-over. Observe the recommendations in this manual.
- Use only approved accessories and attachments that are designed for your machine. Consult your dealer on changes, additions or modifications that may be required for your machine. Do not make any unauthorized modifications to your machine.
- Do not use the machine near or on soft verges of canals and brooks or banks and verges that are undermined by rodents. The machine may sink sideways and roll-over.
- Do not use the machine on brittle bridge heads and poor bridge floors. These constructions may collapse and cause roll-over of the machine. Always check out the condition and carrying capacity of bridges and ramps prior to engage.
- Do not use the machine without wearing the seat restraint system during activities where roll-over or tip-over hazards exist. The Roll Over Protection Structure (ROPS) structure will only be fully effective when the driver remains attached to his seat.
- Do not use the machine beyond its limits of dynamic stability. High speed, abrupt maneuvers, and fast and short cornering will increase the risk of roll-over.
- Be cautious that the center of gravity of the machine may increase when loads on the bucket or attachment are raised. In these conditions, the machine may roll-over earlier than expected.
- You shall take the necessary precautions to always be aware of the possible presence of bystanders, certainly when maneuvering in confined areas, such as the farm yard and sheds. Keep people away from the machine during work; ask bystanders to leave the field. There is not only the risk to be overrun by the machine, but objects may be dropped from a loader. The path of the fallen objects are unknown. Keep bystanders away from the work area.
- Do not allow riders on the machine.
- A machine has only one operator station and is a one man operated vehicle. Other people on or around the machine during normal operation are not allowed.
- All persons who will be operating this machine shall possess a valid local vehicle operating permit and/or other applicable local age work permits.
- The machine is designed and produced exclusively for agricultural use.
- The machine is not designed for light/heavy forestry applications; usage is prohibited for forestry applications.
- All other use will be considered to be contrary to the use specified by CNH INDUSTRIAL AMERICA LLC, who cannot be held liable for damage to property or the machine, or for personal injuries which may result.
- Persons who risk improper use will therefore assume the responsibility for any consequences arising from such use.
- Compliance with the instructions for use, maintenance and repairs described in this manual, are the essential pre-conditions for the use specified by CNH INDUSTRIAL AMERICA LLC.

- The machine must only be used, serviced, or repaired by personnel trained in the relevant working methods and safety regulations and who have been authorized to work on the machine.
- The user must also observe the rules concerning general safety and accident prevention, including the Highway Code when driving on public highways.
- Any arbitrary modifications made to this machine will release CNH INDUSTRIAL AMERICA LLC from any liability resulting from damage or injury.
- CNH INDUSTRIAL AMERICA LLC and all its distribution organizations, inclusive of, but not restricted to, national, regional, or local distributors, cannot be held liable for damage resulting from the malfunction of parts and/or components not approved by CNH INDUSTRIAL AMERICA LLC.
- Under no circumstances will a guarantee be issued for products made or sold by CNH INDUSTRIAL AMERICA LLC that are damaged as a result of the malfunction of parts and/or components not approved by CNH INDUSTRIAL AMERICA LLC.

Product Identification Number (PIN)

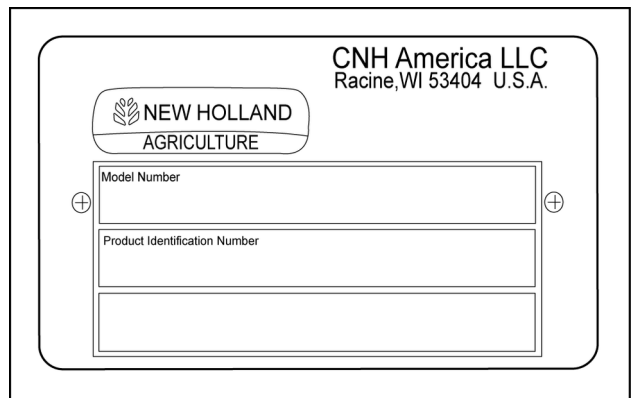
Product identification plate

A product identification plate (1) is located on the inside of the left-hand loader arm.



NHIL17CT01800AA 1

The identification numbers on this plate are important in the event that your loader should require future service.



NHIL13CT00932AA 2

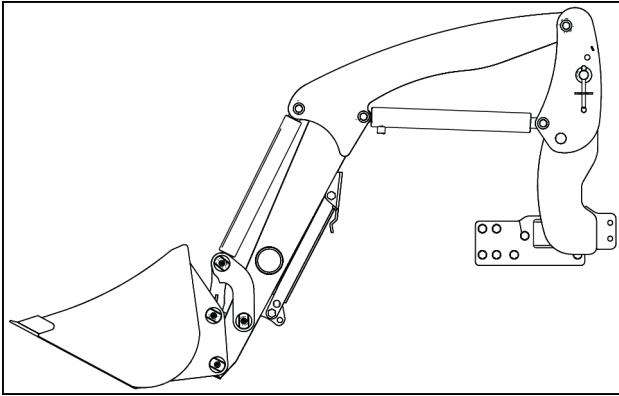
Operator's manual storage on the machine

There is no operator's manual storage on the machine.
Keep the operator's manual in a safe place and have it available for use by all operators.

Machine orientation

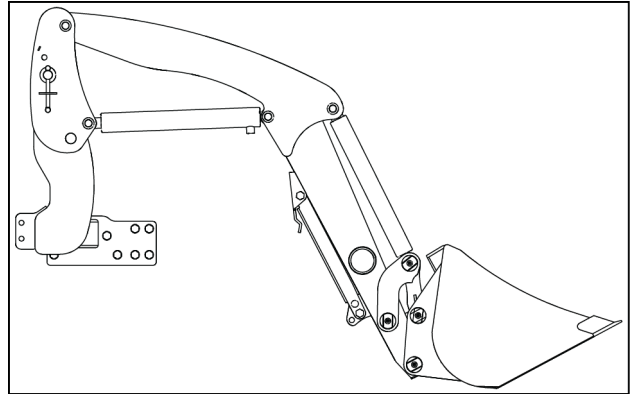
NOTE: On this equipment, left-hand and right-hand are determined by standing behind the unit, looking in the direction of travel.

Left-hand view



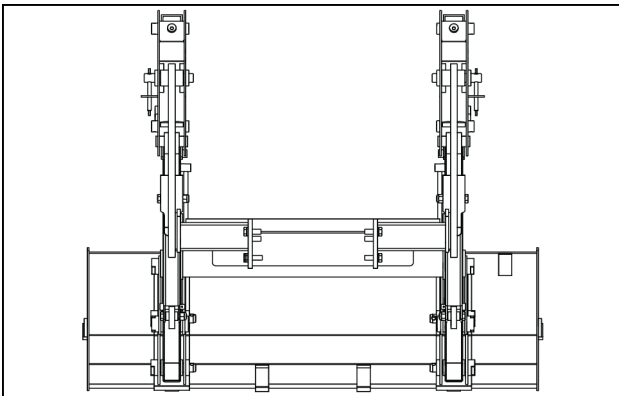
NHIL17CT01812AA 1

Right-hand view



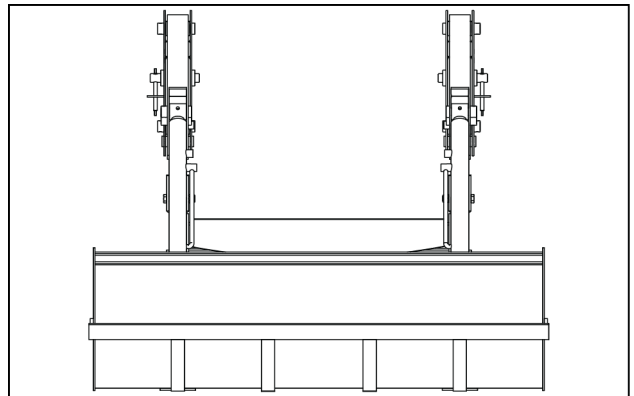
NHIL17CT01813AA 2

Rear view



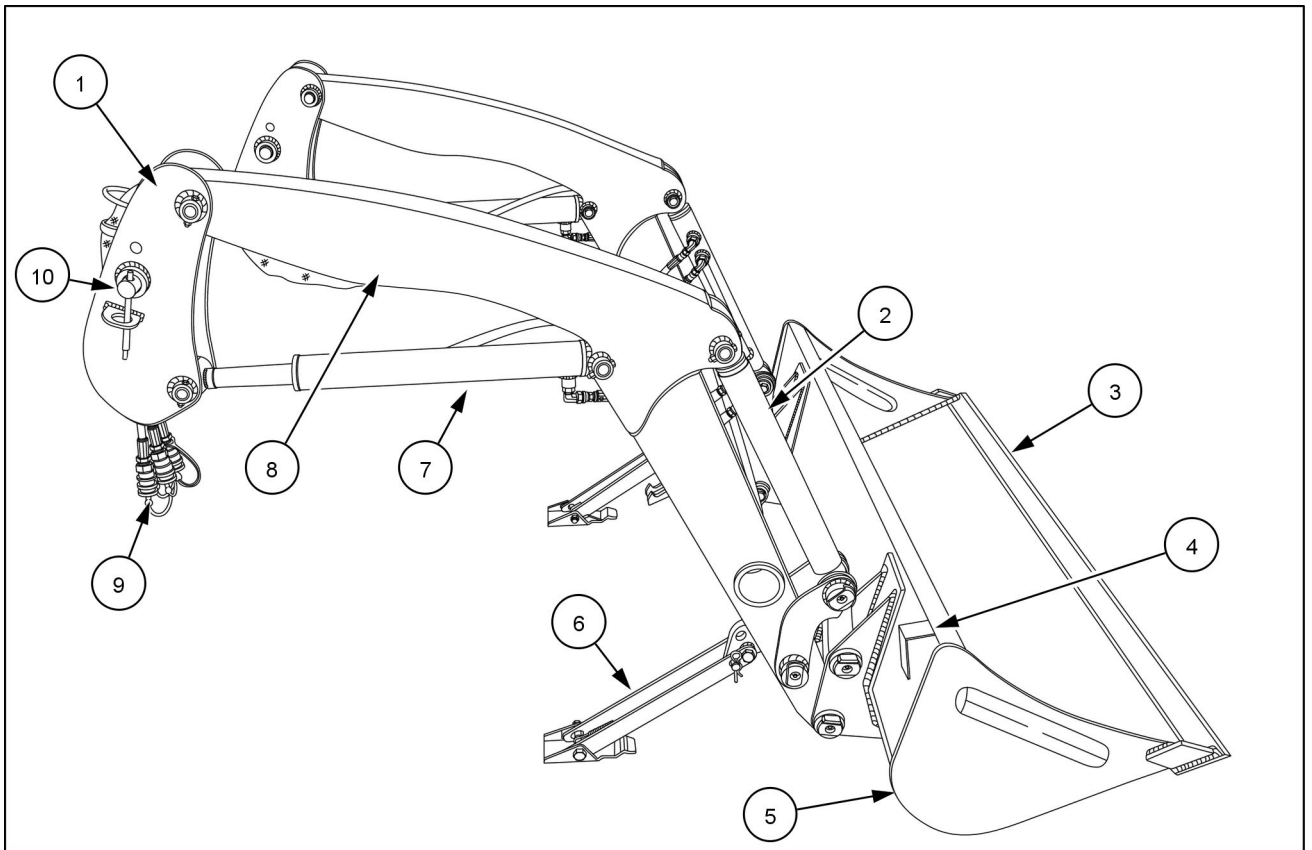
NHIL17CT01815AA 3

Front view



NHIL17CT01814AA 4

Machine components



NHIL17CT01816AA 1

Machine components	
(1) Loader tower	(6) Parking stand
(2) Bucket cylinder	(7) Boom cylinder
(3) Cutting edge	(8) Loader arm
(4) Bucket level indicator	(9) Hydraulic hoses
(5) Bucket	(10) Mounting pin

2 - SAFETY INFORMATION

Safety rules and signal word definitions


Personal safety





This is the safety alert symbol. It is used to alert you to potential personal injury hazards. Obey all safety messages that follow this symbol to avoid possible death or injury.

Throughout this manual you will find the signal words DANGER, WARNING, and CAUTION followed by special instructions. These precautions are intended for the personal safety of you and those working with you.

Read and understand all the safety messages in this manual before you operate or service the machine.

 DANGER indicates a hazardous situation that, if not avoided, will result in death or serious injury.

 WARNING indicates a hazardous situation that, if not avoided, could result in death or serious injury.

 CAUTION indicates a hazardous situation that, if not avoided, could result in minor or moderate injury.

FAILURE TO FOLLOW DANGER, WARNING, AND CAUTION MESSAGES COULD RESULT IN DEATH OR SERIOUS INJURY.

Machine safety

NOTICE: Notice indicates a situation that, if not avoided, could result in machine or property damage.

Throughout this manual you will find the signal word Notice followed by special instructions to prevent machine or property damage. The word Notice is used to address practices not related to personal safety.

Information

NOTE: Note indicates additional information that clarifies steps, procedures, or other information in this manual.

Throughout this manual you will find the word Note followed by additional information about a step, procedure, or other information in the manual. The word Note is not intended to address personal safety or property damage.

Safety rules

General safety rules

Use caution when you operate the machine on slopes. Raised equipment, full tanks and other loads will change the center of gravity of the machine. The machine can tip or roll over when near ditches and embankments or uneven surfaces.

Never permit anyone other than the operator to ride on the machine.

Never operate the machine under the influence of alcohol or drugs, or while you are otherwise impaired.

When digging or using ground-engaging attachments, be aware of buried cables. Contact local utilities to determine the locations of services.

Pay attention to overhead power lines and hanging obstacles. High voltage lines may require significant clearance for safety.

Hydraulic oil or diesel fuel leaking under pressure can penetrate the skin, causing serious injury or infection.

- DO NOT use your hand to check for leaks. Use a piece of cardboard or paper.
- Stop the engine, remove the key, and relieve the pressure before you connect or disconnect fluid lines.
- Make sure that all components are in good condition. Tighten all connections before you start the engine or pressurize the system.
- If hydraulic fluid or diesel fuel penetrates the skin, seek medical attention immediately.
- Continuous long term contact with hydraulic fluid may cause skin cancer. Avoid long term contact and wash the skin promptly with soap and water.

Keep clear of moving parts. Loose clothing, jewelry, watches, long hair, and other loose or hanging items can become entangled in moving parts.

Wear protective equipment when appropriate.

DO NOT attempt to remove material from any part of the machine while it is being operated or while components are in motion.

Make sure that all guards and shields are in good condition and properly installed before you operate the machine. Never operate the machine with shields removed. Always close access doors or panels before you operate the machine.

Dirty or slippery steps, ladders, walkways, and platforms can cause falls. Make sure these surfaces remain clean and clear of debris.

A person or pet within the operating area of a machine can be struck or crushed by the machine or its equipment. DO NOT allow anyone to enter the work area.

Raised equipment and/or loads can fall unexpectedly and crush persons underneath. Never allow anyone to enter the area underneath raised equipment during operation.

Always keep windows, mirrors, all lighting, and Slow-Moving Vehicle (SMV) emblem clean to provide the best possible visibility while you operate the machine.

Operate controls only when seated in the operator's seat, except for those controls expressly intended for use from other locations.

Before you leave the machine:

1. Park the machine on a firm, level surface.
2. Put all controls in neutral or park lock position.
3. Engage the parking brake. Use wheel chocks if required.
4. Lower all hydraulic equipment — Implements, header, etc.
5. Turn off the engine and remove the key.

When, due to exceptional circumstances, you would decide to keep the engine running after you leave the operator's station, then you must follow these precautions:

1. Bring the engine to low idle speed.
2. Disengage all drive systems.

3. **WARNING**

Some components may continue to run down after you disengage drive systems.

Make sure all drive systems are fully disengaged.

Failure to comply could result in death or serious injury.

W0113A

Shift the transmission into neutral.

4. Apply the parking brake.

General maintenance safety

Keep the area used for servicing the machine clean and dry. Clean up spilled fluids.

Service the machine on a firm, level surface.

Install guards and shields after you service the machine.

Close all access doors and install all panels after servicing the machine.

Do not attempt to clean, lubricate, clear obstructions, or make adjustments to the machine while it is in motion or while the engine is running.

Always make sure that working area is clear of tools, parts, other persons and pets before you start operating the machine.

Unsupported hydraulic cylinders can lose pressure and drop the equipment, causing a crushing hazard. Do not leave equipment in a raised position while parked or during service, unless the equipment is securely supported.

Jack or lift the machine only at jack or lift points indicated in this manual.

Incorrect towing procedures can cause accidents. When you tow a disabled machine follow the procedure in this manual. Use only rigid tow bars.

Stop the engine, remove the key, and relieve pressure before you connect or disconnect fluid lines.

Stop the engine and remove the key before you connect or disconnect electrical connections.

Scalding can result from incorrect removal of coolant caps. Cooling systems operate under pressure. Hot coolant can spray out if you remove a cap while the system is hot. Allow the system to cool before you remove the cap. When you remove the cap, turn it slowly to allow

pressure to escape before you completely remove the cap.

Replace damaged or worn tubes, hoses, electrical wiring, etc.

The engine, transmission, exhaust components, and hydraulic lines may become hot during operation. Take care when you service such components. Allow surfaces to cool before you handle or disconnect hot components. Wear protective equipment when appropriate.

When welding, follow the instructions in the manual. Always disconnect the battery before you weld on the machine. Always wash your hands after you handle battery components.

Make sure that tires are correctly inflated. Do not exceed any recommended load or pressure. Follow the instructions in the manual for proper tire inflation.

Tires are heavy. Handling tires without proper equipment could cause death or serious injury.

Never weld on a wheel with a tire installed. Always remove the tire completely from the wheel prior to welding.

Always have a qualified tire technician service the tires and wheels. If a tire has lost all pressure, take the tire and wheel to a tire shop or your dealer for service. Explosive separation of the tire can cause serious injury.

DO NOT weld to a wheel or rim until the tire is completely removed. Inflated tires can generate a gas mixture with the air that can be ignited by high temperatures from welding procedures performed on the wheel or rim. Removing the air or loosening the tire on the rim (breaking the bead) will NOT eliminate the hazard. This condition can exist whether tires are inflated or deflated. The tire MUST be completely removed from the wheel or rim prior to welding the wheel or rim.

Driving on public roads and general transportation safety

Comply with local laws and regulations.

Use appropriate lighting to meet local regulations.

Make sure that the SMV emblem is visible.

Make sure that the brake pedal latch is engaged. You must lock brake pedals together for road travel.

Use safety chains for trailed equipment when safety chains are provided with machine or equipment.

Lift implements and attachments high enough above ground to prevent accidental contact with road.

When you transport equipment or a machine on a transport trailer, make sure that it is properly secured. Be sure

the SMV on the equipment or machine is covered while being transported on a trailer.

Be aware of overhead structures or power lines and make sure that the machine and/or attachments can pass safely under.

Travel speed should be such that you maintain complete control and machine stability at all times.

Slow down and signal before turning.

Pull over to allow faster traffic to pass.

Follow correct towing procedure for equipment with or without brakes.

Thank you so much for reading.
Please click the “Buy Now!”
button below to download the
complete manual.



After you pay.

You can download the most
perfect and complete manual in
the world immediately.

Our support email:

ebooklibonline@outlook.com