

ORIGINAL INSTRUCTIONS

OPERATOR'S MANUAL

160GMS Mower Deck

Part number 51410112
1st edition English
December 2017



Contents

1 GENERAL INFORMATION

Note to the Owner	1-1
Intended use.....	1-3
Product Identification Number (PIN).....	1-4
Operator's manual storage on the machine	1-5
Machine orientation.....	1-6
Machine components.....	1-7

2 SAFETY INFORMATION

Safety rules and signal word definitions	2-1
Safety rules.....	2-2
Do not operate tag.....	2-6
Ecology and the environment	2-7
Safety signs	2-8
Instructional signs	2-13

3 WORKING OPERATIONS

General information

Mower deck - Operating	3-1
Mower deck - Install	3-3
Mower deck - Removal	3-6
Cutting height - Adjust.....	3-9
Mower deck - Lock-up.....	3-11
Mower deck levelness - Adjust	3-12
Blades - Replace	3-15
Blade - Remove	3-16
Blade - Sharpen	3-17
Blade - Install	3-19
Belt - Remove	3-20
Belt - Install	3-21
Power Take-Off (PTO) shaft - Install.....	3-23
Power Take-Off (PTO) shaft - Remove.....	3-24
Common mowing problems	3-25

4 MAINTENANCE

General information

Safety rules.....	4-1
-------------------	-----

Maintenance planning

Mower deck attachment - Maintenance chart	4-2
---	-----

Every 10 hours or daily

Grease fittings - Lubricate	4-2
Gearbox oil level - Check.....	4-3

Initial 50 hours
Gearbox oil – Change fluid 4-3

Every 200 hours
Mower deck belt - Replace 4-4

Every 800 hours
Mower deck attachment - Drain fluid 4-4

Storage
Storing the mower deck 4-5

5 TROUBLESHOOTING

Symptom(s)
Troubleshooting - Foreword 5-1
Mower deck attachment - Troubleshooting 5-1

6 SPECIFICATIONS

General specifications 6-1

7 FORMS AND DECLARATIONS

Delivery report - Dealer copy 7-1
Delivery report - Owner copy 7-3

1 - GENERAL INFORMATION

Note to the Owner

This manual contains information concerning the adjustment and maintenance of your new equipment. You have purchased a dependable machine, but only by proper care and operation can you expect to receive the performance and long service built into this equipment. Please have all operators read this manual carefully and keep it available for ready reference.

Your NEW HOLLAND dealer will instruct you in the general operation of your new equipment. (Refer to the 'Delivery Report' at the back of this manual.) Your dealer's staff of factory-trained service technicians will be glad to answer any questions that may arise regarding the operation of your machine. New Holland Top Service is also available. Call 1-866-NEWHLND (1-866-639-4563) or email na.topservice@cnh.com.

Your NEW HOLLAND dealer carries a complete line of genuine NEW HOLLAND service parts. These parts are manufactured and carefully inspected to insure high quality and accurate fitting of any necessary replacement parts. Be prepared to give your dealer the model and product identification number of your new equipment when ordering parts. Locate these numbers now and record them below. Refer to the 'General Information' section of this manual for the location of the model and product identification numbers of your machine.

PLEASE RECORD THE FOLLOWING INFORMATION


Loader Model

Product Identification Number (PIN)

Date Purchased

Attachment Model

Attachment Model

	<p>This is the safety alert symbol. It is used with and without signal words to alert you to potential personal injury hazards. Obey all safety messages that follow this symbol to avoid possible death or injury.</p>
---	---

⚠ WARNING

**Illustrations in this manual may show protective shielding open or removed to better illustrate a particular feature or adjustment.
Replace all shields before operating the machine.
Failure to comply could result in death or serious injury.**

W0012A

Improvements

CNH America LLC is continually striving to improve its products. We reserve the right to make improvements or changes when it becomes practical and possible to do so, without incurring any obligation to make changes or additions to the equipment sold previously.

Intended use

The loader was designed to mount on NEW HOLLAND approved tractors. The loader is designed to load and move materials with a variety of buckets and approved NEW HOLLAND attachments.

DO NOT use this machine for any purpose or in any manner other than as described in the manual, decals, or other product safety information provided with the machine. These materials define the machine's intended use.

Use only approved accessories and attachments designed for your machine. Consult your dealer on changes, additions or modifications that may be required for your machine. Do not make any unauthorized modifications to your machine.

Installation and operation instructions for certain hydraulic valve sets, attachments and accessories may not be included in this operator's manual.

Use the publication received with the specific item. In the case of hydraulic valves, refer to the tractor operator's manual.

NOTICE: *Loader frames are designed for specific tractor models. Do not install a loader frame on a different model than specified, without obtaining approval from CNH America LLC.*

Operator's age

All persons who will be operating this machine shall possess a valid local vehicle operating permit and/or other applicable local age work permits.

WARNING

IMPROPER OPERATION OF THIS MACHINE CAN CAUSE DEATH OR SERIOUS INJURY. MAKE SURE THAT EVERY OPERATOR:

-is instructed in the safe and proper use of this machine.

-reads and understands the operator's manual for this machine.

-reads and understands ALL safety signs on the machine.

Failure to comply could result in death or serious injury.

W0188A

Read and thoroughly understand this manual before operating this machine. If you are an inexperienced operator, study this manual and receive operating instructions from an experienced operator. Your dealer can assist you in learning machine operation and show you proper operating procedures. Keep this manual readily available, preferably with the machine. If the original manual is damaged, order a new one from your dealer.

Intended use

General information

▲ CAUTION

Improper operation or service of this machine can result in an accident.

1. Before you operate the machine, read the operator's manual for complete instructions and safety information.
 2. Make sure that everyone is clear of the machine and equipment before you start operation.
 3. Keep all riders off the machine and equipment.
- Failure to comply could result in minor or moderate injury.

C0152A

This operator's manual describes the operation and maintenance of the machine. The information in the operator's manual was correct at the time this manual was printed. Please contact your dealer if there is anything you do not understand in the manual.

One operator's manual is supplied with every machine in order to show operator how to operate and maintain the machine properly. Read and use the information to enable you to use the machine in a safe way in combination with short downtime. This machine is designed with simple service in mind, and it can be maintained with normal hand tools.

Read and study the text in the operator's manual thoroughly before you begin to use the machine. If you are not an experienced operator, study the operator's manual and ask an experienced operator to explain things to you. Your dealer can help you by teaching you about operation and suitable work methods. Keep this operator's manual readily available, preferably with the tractor. Contact your dealer to obtain a replacement manual, if the original manual is damaged or missing.


NOTE: Read through the operator's manual before you start to use the machine.

Product Identification Number (PIN)

A product identification label is provided for your mower. The numbers on this label are important if your mower should require dealer service or if you need additional information on the equipment. Prior to using the mower for the first time, record the numbers from the identification label in the appropriate spaces provided below.

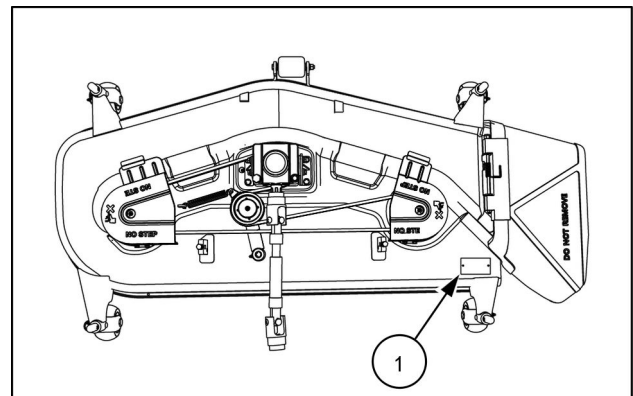
Model number :

Product Identification Number (PIN):

	CNH Industrial America LLC Racine, WI 53404 U.S.A.
Model Number	
Product Identification Number	

NHIL16CT01760AA 1

Product Identification Number (PIN) plate location (1),
60 in mower deck:

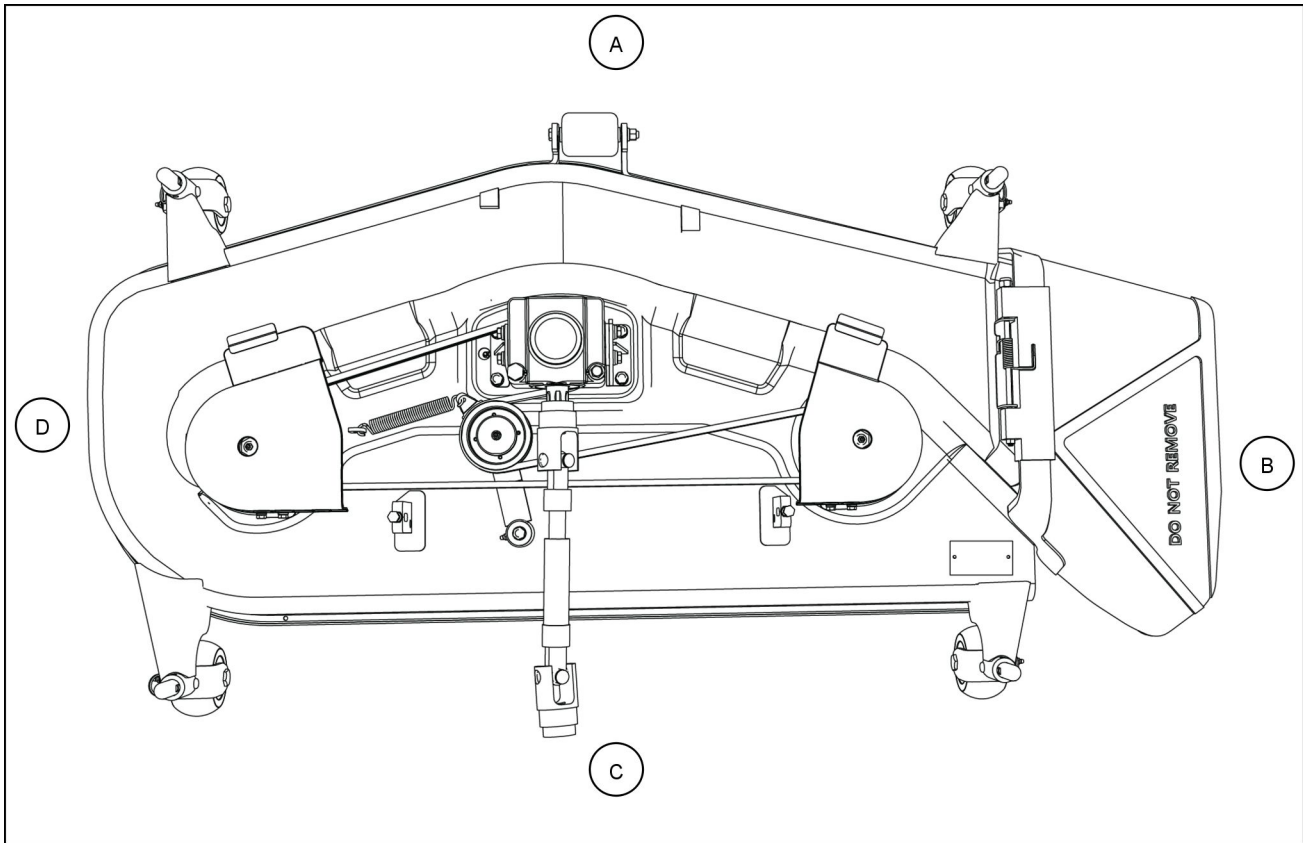


NHIL17CT01840AA 2

Operator's manual storage on the machine

There is no operator's manual storage on the machine.
Keep the operator's manual in a safe place and have it available for use by all operators.

Machine orientation



NHIL17CT01843FA 1

60 in mower deck

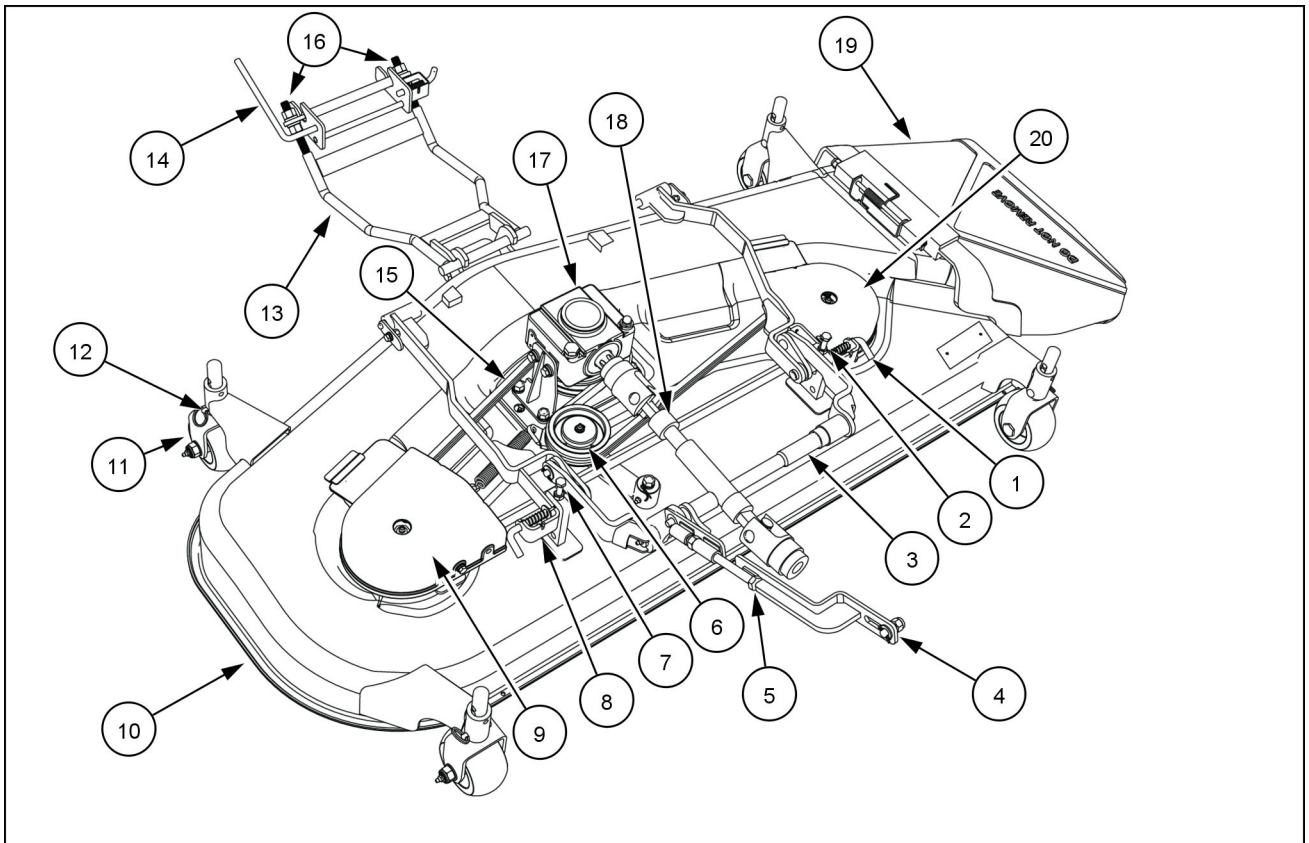
(A) Front side

(B) Right-hand side

(C) Rear side

(D) Left-hand side

Machine components



NHIL17CT01852FA 1

Machine components		
(1) Right-hand draft link	(8) Left-hand draft link	(15) Belt
(2) Right-hand deck adjustment bolt	(9) Left-hand pulley cover	(16) Front hanger adjustment nuts
(3) Lift shaft	(10) Mower deck non discharge side	(17) Gear box assembly
(4) Lift link	(11) Deck wheel, one of four	(18) Drive shaft assembly
(5) Lift link adjustment nut	(12) Deck wheel adjustment pin and retainer	(19) Discharge chute
(6) Idler pulley	(13) Front hanger	(20) Right-hand pulley cover
(7) Left-hand deck adjustment bolt	(14) Front hanger latch assembly	

2 - SAFETY INFORMATION

Safety rules and signal word definitions


Personal safety





This is the safety alert symbol. It is used to alert you to potential personal injury hazards. Obey all safety messages that follow this symbol to avoid possible death or injury.

Throughout this manual you will find the signal words DANGER, WARNING, and CAUTION followed by special instructions. These precautions are intended for the personal safety of you and those working with you.

Read and understand all the safety messages in this manual before you operate or service the machine.

 DANGER indicates a hazardous situation that, if not avoided, will result in death or serious injury.

 WARNING indicates a hazardous situation that, if not avoided, could result in death or serious injury.

 CAUTION indicates a hazardous situation that, if not avoided, could result in minor or moderate injury.

FAILURE TO FOLLOW DANGER, WARNING, AND CAUTION MESSAGES COULD RESULT IN DEATH OR SERIOUS INJURY.

Machine safety

NOTICE: Notice indicates a situation that, if not avoided, could result in machine or property damage.

Throughout this manual you will find the signal word Notice followed by special instructions to prevent machine or property damage. The word Notice is used to address practices not related to personal safety.

Information

NOTE: Note indicates additional information that clarifies steps, procedures, or other information in this manual.

Throughout this manual you will find the word Note followed by additional information about a step, procedure, or other information in the manual. The word Note is not intended to address personal safety or property damage.

Safety rules

General safety rules

Use caution when you operate the machine on slopes. Raised equipment, full tanks and other loads will change the center of gravity of the machine. The machine can tip or roll over when near ditches and embankments or uneven surfaces.

Never permit anyone other than the operator to ride on the machine.

Never operate the machine under the influence of alcohol or drugs, or while you are otherwise impaired.

When digging or using ground-engaging attachments, be aware of buried cables. Contact local utilities to determine the locations of services.

Pay attention to overhead power lines and hanging obstacles. High voltage lines may require significant clearance for safety.

Hydraulic oil or diesel fuel leaking under pressure can penetrate the skin, causing serious injury or infection.

- DO NOT use your hand to check for leaks. Use a piece of cardboard or paper.
- Stop the engine, remove the key, and relieve the pressure before you connect or disconnect fluid lines.
- Make sure that all components are in good condition. Tighten all connections before you start the engine or pressurize the system.
- If hydraulic fluid or diesel fuel penetrates the skin, seek medical attention immediately.
- Continuous long term contact with hydraulic fluid may cause skin cancer. Avoid long term contact and wash the skin promptly with soap and water.

Keep clear of moving parts. Loose clothing, jewelry, watches, long hair, and other loose or hanging items can become entangled in moving parts.

Wear protective equipment when appropriate.

DO NOT attempt to remove material from any part of the machine while it is being operated or while components are in motion.

Make sure that all guards and shields are in good condition and properly installed before you operate the machine. Never operate the machine with shields removed. Always close access doors or panels before you operate the machine.

Dirty or slippery steps, ladders, walkways, and platforms can cause falls. Make sure these surfaces remain clean and clear of debris.

A person or pet within the operating area of a machine can be struck or crushed by the machine or its equipment. DO NOT allow anyone to enter the work area.

Raised equipment and/or loads can fall unexpectedly and crush persons underneath. Never allow anyone to enter the area underneath raised equipment during operation.

Always keep windows, mirrors, all lighting, and Slow-Moving Vehicle (SMV) emblem clean to provide the best possible visibility while you operate the machine.

Operate controls only when seated in the operator's seat, except for those controls expressly intended for use from other locations.

Before you leave the machine:

1. Park the machine on a firm, level surface.
2. Put all controls in neutral or park lock position.
3. Engage the parking brake. Use wheel chocks if required.
4. Lower all hydraulic equipment — Implements, header, etc.
5. Turn off the engine and remove the key.

When, due to exceptional circumstances, you would decide to keep the engine running after you leave the operator's station, then you must follow these precautions:

1. Bring the engine to low idle speed.
2. Disengage all drive systems.

3. **WARNING**

Some components may continue to run down after you disengage drive systems.

Make sure all drive systems are fully disengaged.

Failure to comply could result in death or serious injury.

W0113A

Shift the transmission into neutral.

4. Apply the parking brake.

Thank you so much for reading.
Please click the “Buy Now!”
button below to download the
complete manual.



After you pay.

You can download the most
perfect and complete manual in
the world immediately.

Our support email:

ebooklibonline@outlook.com