

ORIGINAL INSTRUCTIONS

OPERATOR'S MANUAL

TI 254B

TI 404B

Tractor

Part Number 51426551

2nd edition English

December 2017

Replaces part number 48063745

CNH Industrial (Harbin) Machinery Co. Ltd.
No. 78 Songhua Road, Core District Hanan New Industry Zone,
Harbin City, Heilongjiang Province, P.R. China
+86 4008676600 (for customer in the areas other than Xinjiang Province)/
+86 4000991805 (for customer in Xinjiang Province)



Contents

1 GENERAL INFORMATION

Metric and imperial units abbreviations.....	1-1
To the owner.....	1-3
Product Identification.....	1-5
Engine identification.....	1-6
Drive line identification.....	1-7
Product identification plate.....	1-8
Ecology and the environment.....	1-9
Safety rules.....	1-11
Personal safety.....	1-12
Driving the tractor.....	1-13
Operating the tractor.....	1-14
Fire extinguisher.....	1-19
Safety decals.....	1-21
International symbols.....	1-28
Airborne noise emission.....	1-29
Tractor vibration level information sheet.....	1-30
Machine stability.....	1-31
About this manual.....	1-35
Programming tractor functions.....	1-36
Before operating.....	1-37
Instructor's seat.....	1-38

2 SAFETY INFORMATION

Safety precautions.....	2-1
Safety decals.....	2-3
Safety rules.....	2-12
Fire or explosion prevention.....	2-18
Fire extinguisher.....	2-19
Protection offered by the tractor.....	2-20
Intended use statement.....	2-23

3 CONTROLS AND INSTRUMENTS

ACCESS TO OPERATOR'S PLATFORM

Cab and platform - Access/Exit.....	3-1
Cab air recirculation filter.....	3-8
Cable and harness routing.....	3-9
Mobile telephone usage.....	3-9
Implement monitor installation.....	3-10
Cab pressurization monitor (where fitted).....	3-11
Running-in procedure.....	3-12

OPERATOR'S SEAT

Seat belt and operator presence switch (where fitted).....	3-13
--	------

FORWARD CONTROLS

Key start switch.....	3-14
Hazard warning light operation.....	3-14
Lights and turn indicator lever.....	3-15
Windshield wiper and washer controls.....	3-16
Foot brakes.....	3-17
Steering column.....	3-17
Adjustable air vents.....	3-18

LEFT-HAND SIDE CONTROLS

Handbrake.....	3-19
----------------	------

RIGHT-HAND SIDE CONTROLS

Switch panel.....	3-20
-------------------	------

REARWARD CONTROLS

Right-hand side cab 'C' pillar.....	3-21
-------------------------------------	------

OVERHEAD CONTROLS

Radio or audio system.....	3-21
----------------------------	------

INSTRUMENT CLUSTER

Instrument cluster.....	3-22
Gauges.....	3-23
Indicator and warning lights.....	3-24
Displays.....	3-26
Tractor ground speed display.....	3-30
Calibrating the ground speed display.....	3-31
Warning and advisory symbols.....	3-34

4 OPERATING INSTRUCTIONS

COMMISSIONING THE UNIT

Refueling the tractor.....	4-1
----------------------------	-----

STARTING THE UNIT

Starting the engine.....	4-2
Fuel heater (where fitted).....	4-7
Coolant immersion heater (where fitted).....	4-7
Transmission oil heater (where fitted).....	4-8
Booster battery procedure.....	4-9

STOPPING THE UNIT

Engine shutdown.....	4-10
----------------------	------

MOVING THE UNIT

Operating in cold temperatures.....	4-10
-------------------------------------	------

5 TRANSPORT OPERATIONS

PREPARING FOR ROAD TRANSPORT

Carrying the tractor on a transporter	5-1
---	-----

RECOVERY TRANSPORT

Towing the tractor.....	5-1
-------------------------	-----

6 WORKING OPERATIONS

GENERAL INFORMATION

Differential control	6-1
Four wheel drive.....	6-3

TRANSMISSION

Full powershift transmission	6-5
Clutch pedal	6-5
Foot throttle pedal	6-6
Hand throttle lever.....	6-6
Transmission operation.....	6-7
Shuttle lever	6-13
Driving the tractor.....	6-14
Speed matching	6-16

REAR POWER TAKE-OFF

PTO operation safety rules	6-19
Attaching Power-Take Off (PTO) driven equipment	6-19
PTO operation	6-21
Two-speed, shiftable P.T.O (where fitted)	6-24
Three-speed, shiftable P.T.O. (where fitted).....	6-27

REAR HITCH

Electronic Draft Control (EDC)	6-30
Electronic Draft Control (EDC)	6-34

HYDRAULIC REMOTE CONTROL VALVES

ELECTRO-HYDRAULIC REMOTE CONTROL VALVES (where fitted).....	6-39
Operating continuous flow hydraulic equipment.....	6-40
Connecting remote cylinders	6-42
Rear Axle Hydraulic Oil Level	6-45

HYDRAULIC POWER BEYOND PORT

Hydraulic Power Beyond Port for External Services (where fitted).....	6-47
Power Beyond Selector Control	6-48

THREE POINT HITCH

Three-point hitch	6-56
Lift rods	6-58
Top link	6-60
Quick hitch	6-62
Linkage Stabilisers	6-64

DRAWBARS AND TOWING ATTACHMENTS

Drawbars and towing attachments	6-67
Swinging drawbars	6-69

WHEEL TRACK ADJUSTMENT

Front wheels	6-71
Front wheel alignment	6-75
Steering stops	6-76
Front axle oscillation stops	6-76
Dynamic Front Fenders (where fitted)	6-77
Rear wheel track adjustment	6-79

BALLASTING AND TIRES

Ballasting and tires	6-84
Cast iron weights (where fitted)	6-87
Liquid Ballast	6-88
Tire care	6-89
Tire pressures and permissible loads	6-90

AUXILIARY POWER CONNECTIONS

Seven pin electrical power outlet	6-92
Internal power connectors	6-93
External power connectors	6-95
SEATS	6-96

7 MAINTENANCE

GENERAL INFORMATION

General Information	7-1
Preventing system contamination	7-1
Diesel Fuel Requirements	7-2
Biodiesel fuels	7-3
Guards	7-4
Lubricants and coolants	7-6
Tractor jacking points	7-8
Lubricant, fuel and coolant specifications	7-9

MAINTENANCE CHART

Maintenance chart	7-10
-------------------------	------

WHEN THE WARNING LAMP LIGHTS

Engine air cleaner	7-12
Drain the fuel system water separator.....	7-14
Check the brake fluid level	7-15

EVERY 10 HOURS OR EACH DAY

Check engine coolant level.....	7-16
Check engine oil level	7-17
Check windscreen washer reservoir	7-18

FIRST 50 HOURS

The First 50-Hour Service	7-19
---------------------------------	------

EVERY 50 HOURS

Clean the cab air filters	7-21
Clean the radiator, oil cooler and air conditioner condenser cores	7-23
Grease fittings	7-25
Check the front and the rear wheel nuts	7-28
Tire inflation pressures	7-28

EVERY 100 HOURS

Airconditioning compressor drive belt	7-29
Inspect the poly V-belt.....	7-29

EVERY 300 HOURS

Battery	7-30
4WD Suspension cylinder upper bearing.....	7-31
Parking brake - Adjust.....	7-32
Check transmission/rear axle and hydraulic oil level	7-33

EVERY 600 HOURS

Engine oil and filters	7-34
Fuel filters	7-37
Change the engine air cleaner outer element	7-38
Transmission / hydraulic oil filters	7-39
Check the engine air intake connections	7-41

EVERY 1200 HOURS OR ANNUALLY

Cab air filters	7-42
Changing the transmission and Hydraulic oil filters with argo filter	7-43
Change transmission, rear axle and hydraulic oil and filters	7-45
Four wheel drive lubrication	7-46
Front axle - hubs	7-47
Front Power Take-Off (PTO).....	7-48

EVERY 1200 HOURS OR EVERY 2 YEARS

Battery	7-49
Engine air cleaner	7-51
Check the valve tappet clearance	7-53
Change the air brake drier reservoir	7-54
Clean and reset fuel injectors	7-55

EVERY 3600 HOURS OR EVERY 4 YEARS

Cooling system - OAT type coolant	7-56
---	------

EVERY 36 MONTHS

Service the air conditioner system	7-60
--	------

GENERAL MAINTENANCE

Cleaning the tractor	7-61
Fuel pre-filter (where fitted)	7-63
Fuel system bleeding	7-63
Brake pedals	7-64
Engine idle speed	7-65
Lighting system	7-67
Bulb replacement	7-68
Fuses and relays	7-70
Protection of the electronic modules during welding operations	7-76

STORAGE

Tractor storage	7-77
Removal of tractor from storage	7-77

8 TROUBLESHOOTING

FAULT CODE RESOLUTION

Introduction	8-1
--------------------	-----

SYMPTOM(S)

Engine	8-2
Transmission	8-3
Hydraulics	8-4
Three-point hitch	8-4
Brakes	8-4
Cab	8-5
Electrical system	8-5

9 SPECIFICATIONS

General dimensions	9-1
Frame - General specification	9-1
Capacities	9-6
Engine	9-7

Cooling system	9-8
Hydraulic system	9-9
Remote control valves	9-10
Lift capacities	9-12
Brakes	9-13
Steering system	9-13
Tightening torques.....	9-15

10 ACCESSORIES

Front-end loader fixation points	10-1
--	------

11 FORMS AND DECLARATIONS

Service record - 1st 50 hour, Dealer copy	11-1
Service record - 1st 50 hour, Owner copy	11-3



1 - GENERAL INFORMATION

Metric and imperial units abbreviations

Typical applications	Metric unit		Imperial unit	
	Name	Symbol	Name	Symbol
Area (Land area)				
	hectare	ha	acre	ac
	square meter	m ²	square foot	ft ²
	square millimeter	mm ²	square inch	in ²
			square inch	in ²
Electricity				
	ampere	A	ampere	A
	volt	V	volt	V
	microfarad	μF	microfarad	μF
	ohm	Ω	ohm	Ω
Force				
	kilonewton	kN	pound	lb
	newton	N	pound	lb
Force per length				
	newton per meter	N/m	pound per foot	lb/ft
			pound per inch	lb/in
Frequency				
	megahertz	MHz	megahertz	MHz
	kilohertz	kHz	kilohertz	kHz
	hertz	Hz	hertz	Hz
Frequency-Rotational				
	revolution per minute	r/min	revolution per minute	r/min ^a
		rpm		rpm
Length				
	kilometer	km	mile	mi
	meter	m	foot	ft
	centimeter	cm	inch	in
	millimeter	mm	inch	in
	micrometer	μm		
Mass				
	kilogram	kg	pound	lb
	gram	g	ounce	oz
	milligram	mg		
Mass per mass				
	milligram per kilogram	mg/ kg	parts per million	ppm
Power				
	kilowatt	kW	horsepower	Hp
	watt	W	Btu per hour	Btu/hr
			Btu per minute	Btu/min
Pressure or stress (Force per area)				
	kilopascal	kPa	pound per square inch	psi
			inch of mercury	inHg
	pascal	Pa	inch of water	inH ₂ O
	megapascal	MPa	pound per square inch	psi
	millibar	mbar		
	bar	bar		

1 - GENERAL INFORMATION

Typical applications	Metric unit		Imperial unit	
	Name	Symbol	Name	Symbol
Temperature (other than thermodynamic)				
	degrees Celsius	°C	degrees Fahrenheit	°F
Time				
	hour	h	hour	h
	minute	min	minute	min
	second	s	second	s
Torque (includes bending moment, moment of force, and moment of a couple)				
	newton meter	N m	pound foot	lb ft
			pound foot	lb in
Velocity				
	kilometer per hour	km/h	mile per hour	mph
	meter per second	m/s	foot per second	ft/s
	millimeter per second	mm/s	inch per second	in/s
	meter per minute	m/min	foot per minute	ft/min
Volume (includes capacity)				
	cubic meter	m ³	cubic yard	yd ³
				cu yd
	liter	l	cubic inch	in ³
	liter	l	US gallon	US gal
			UK gallon	UK gal
			US quart	US qt
			UK quart	UK qt
	milliliter	ml	fluid ounce	fl oz
Volume per time (includes discharge and flow rate)				
	cubic meter per minute	m ³ /min	cubic foot per minute	ft ³ /min
	liter per minute	l/min	US gallon per minute	US gal/min
	milliliter per minute	ml/min	UK gallon per minute	UK gal/min
Sound power level and sound pressure level				
	decibel	dB	decibel	dB
Water hardness				
	German hardness	°dH	English hardness	°e
	French hardness	°fH	parts per million	ppm

Glossary

Acronym	Definition
DEF	Diesel Exhaust Fluid
ISO	International Organization for Standardization
MSDS	Material Safety Data Sheet
NOx	Nitrogen Oxide
PPE	Personal Protective Equipment
SCR	Selective Catalytic Reduction
ULSD	Ultra Low Sulfur Diesel
%	Percent
<	Less than
>	Greater than

To the owner

General information

This Manual has been prepared to assist you in the correct procedure for running-in, driving and operating and for the maintenance of your new tractor. Read this Manual carefully. Your tractor is intended for use in normal and customary agricultural applications.

If at any time you require advice concerning your tractor, do not hesitate to contact your authorised dealer. He has factory trained personnel, genuine manufacturers parts and the necessary equipment to carry out all your service requirements.

Your tractor has been designed and built to give maximum performance, economy and ease of operation under a wide variety of operating conditions. Prior to delivery, the tractor was carefully inspected, both at the factory and by your dealer to make sure that it reaches you in optimum condition. To maintain this condition and make sure trouble-free operation, it is important that the routine services, as specified in Maintenance of this Manual, are carried out at the recommended intervals.

Operators manual

The Operators Manual supplied with your tractor is an important source of information and should be stored safely.

The manual is prepared specifically for your tractor so it is important that you make a note of the print number and issue date which can be found on the cover. In the event the manual is lost or damaged it can be replaced with the correct version.

A storage pocket for the Operators Manual can be found on the rear of the seat. The manual should be kept in this pocket at all times when not in use.

Safety

The pages in Section 2 list the precautions to be observed to ensure your safety and the safety of others. Read the safety precautions and follow the advice offered before operating the tractor.

Cleaning the tractor

Your tractor is a state-of-the-art machine with sophisticated, electronic controls. This should be taken into consideration when cleaning the tractor, particularly if using a high pressure washer. Even though every precaution has been taken to safeguard electronic components and connections, the pressure generated by some of these machines is such that complete protection against water ingress cannot be guaranteed.

When using a high pressure washer, do not stand too close to the tractor and avoid directing the jet at electronic components, electrical connections, breathers, seals,

filler caps, etc. Never direct a cold water jet at a hot engine or exhaust.

Failure to comply with these rules will render the warranty null and void.

Electro magnetic interference(EMC)

This tractor complies strictly with the European regulations on electro-magnetic emissions. However, interference may arise as a result of add on equipment which may not necessarily meet the required standards. As such interference can result in serious malfunction of the unit and/or create unsafe situations, you must observe the following:

- Make sure that each piece of non-New Holland equipment fitted to the tractor bears the CE mark.
- The maximum power of emission equipment (radio, telephones, etc,) must not exceed the limits imposed by the national authorities of the country where you use the tractor.
- The electro-magnetic field generated by the add on system should not exceed **24 V/m** at any time and at any location in the proximity of electronic components.

Failure to comply with these rules will render the New Holland warranty null and void.

First 50 hour service

In Section 11, at the back of this Manual, you will find the **50 h** service reports.

NOTICE: *It is important the 50 h service is carried out as recommended to make sure your tractor provides optimum performance and efficiency.*

After you have operated the tractor for **50 h**, take your tractor, together with this Manual, to your dealer. He will then perform the factory recommended **50 h** service and complete the service report sheets. The first sheet (page) is your copy of the service performed. The second sheet (page) is the dealer's copy and should be removed by the dealer after the service has been carried out. Make sure that you and the dealer sign both copies.

Service parts

It should be pointed out that genuine parts have been examined and approved by the company. The installation and/or use of 'non-genuine' products could have negative effects upon the design characteristics of your tractor and thereby affect it's safety. The Company is not liable for any damage caused by the use of 'non-genuine' parts and accessories. Only genuine replacement parts should be used. The use of non-genuine parts may invalidate legal approvals associated with this product.

It is prohibited to carry out any modifications to the tractor unless specifically authorised, in writing, by the After Sales Service department of the Company.

Warranty

Your tractor is warranted according to legal rights in your country and the contractual agreement with the selling dealer. No warranty shall, however, apply if the tractor has not been used, adjusted and maintained according to the instructions given in the Operator's Manual.

Use of biodiesel fuels

NOTICE: Before using Biodiesel fuels in your tractor, refer to the information on page regarding the storage and use of Biodiesel fuels.

Emission controls

NOTE: The engine and fuel system on your machine is designed and built to government emissions standards. Tampering by dealers, customers, operators and users is strictly prohibited by law. Failure to comply could result in government fines, rework charges, invalid warranty, legal action and possible confiscation of the machine until rework to original condition is completed. Engine service and/or repairs must be done by a certified technician only!

Product Identification

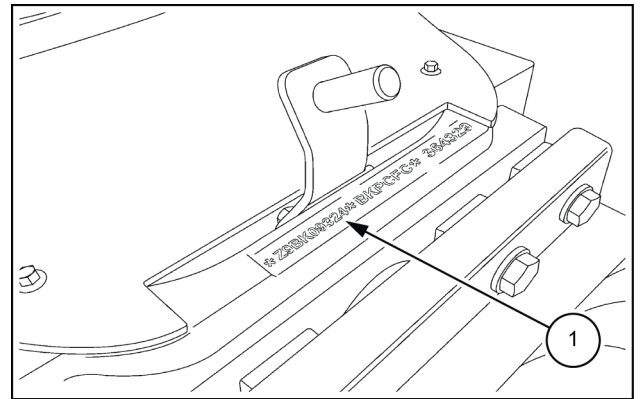
The tractor and major components are identified using serial numbers and/or manufacturing codes.

Tractor identification data must be supplied to the dealer when requesting parts or service and will also be needed to aid in identifying the tractor if it is ever stolen.

The following provides the locations of the identification data.

Tractor Identification

The serial number and model identification information is stamped on the front support **(1)**. These numbers are also repeated on the vehicle identification plate reproduced above.



HAIL17TRO3881AB 1

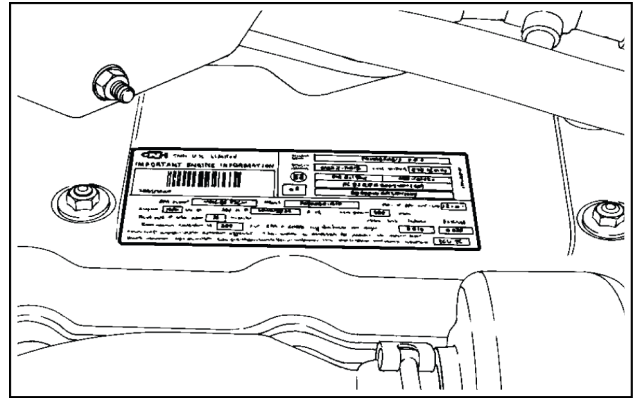
Engine identification

The engine serial number and date code are stamped on the engine identification plate.

The identification plate is located on top of the engine attached to the valve cover. The plate also provides information on engine adjustments and compliance with Emission Regulations where required.

Record the information below for quick reference.

Engine Serial No. _____

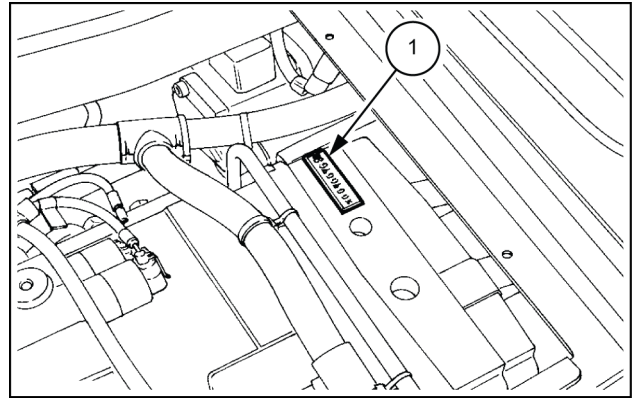


HAIL17TRO3882AA 1

Drive line identification

The serial number plate **(1)** is located on top of the transmission casing. Access to the number can be gained by removing the plate in the floor of the cab as shown in the illustration. This number is repeated on the vehicle identification plate. Record the information below for quick reference.

Drive line Serial No. _____



HAIL17TRO3883AB 1

Thank you so much for reading.
Please click the “Buy Now!”
button below to download the
complete manual.



After you pay.

You can download the most
perfect and complete manual in
the world immediately.

Our support email:

ebooklibonline@outlook.com