

ORIGINAL INSTRUCTIONS

# OPERATOR'S MANUAL

---

**TD5.65**

**TD5.75**

**TD5.80**

**TD5.90**

**TD5.100**

**TD5.110**

Tractor

**Part number 51598759**

2<sup>nd</sup> edition English

March 2019

*Replaces part number 47918128*



# Contents

---

## 1 GENERAL INFORMATION

|   |     |
|---|-----|
| METRIC AND IMPERIAL UNITS ABBREVIATIONS ..... | 1-1 |
| TO THE OWNER .....                            | 1-3 |
| PRODUCT IDENTIFICATION .....                  | 1-5 |
| ECOLOGY AND THE ENVIRONMENT .....             | 1-8 |

## 2 SAFETY INFORMATION

|   |      |
|---|------|
| SAFETY PRECAUTIONS .....                | 2-1  |
| Commission Directive 2010/52/EU .....   | 2-3  |
| WORKING SAFELY .....                    | 2-10 |
| GENERAL MAINTENANCE SAFETY .....        | 2-14 |
| PROTECTION OFFERED BY THE TRACTOR ..... | 2-17 |
| Dimensions .....                        | 2-20 |
| Dimensions .....                        | 2-21 |
| TRACTOR JACKING POINTS .....            | 2-22 |
| PREVENTION OF FIRE OR EXPLOSION .....   | 2-23 |
| Getting in and out of the machine ..... | 2-24 |
| EMERGENCY EXIT .....                    | 2-24 |
| INTENDED USE STATEMENT .....            | 2-25 |
| SAFETY DECALS .....                     | 2-27 |
| GUARDS .....                            | 2-32 |
| INTERNATIONAL SYMBOLS .....             | 2-35 |
| NOISE LEVEL INFORMATION SHEET .....     | 2-36 |
| VIBRATION LEVEL INFORMATION SHEET ..... | 2-37 |

## 3 CONTROLS AND INSTRUMENTS

### ACCESS TO OPERATOR'S PLATFORM

|                                     |      |
|-------------------------------------|------|
| INTRODUCTION .....                  | 3-1  |
| INSTRUMENT CLUSTER .....            | 3-2  |
| Cab controls and adjustments .....  | 3-3  |
| STEERING COLUMN .....               | 3-3  |
| CAB Access/Exit .....               | 3-4  |
| ADJUST THE MIRRORS .....            | 3-6  |
| SUN PROTECTION .....                | 3-6  |
| CONTROL ELEMENTS/SIDE CONSOLE ..... | 3-7  |
| RADIO (option) .....                | 3-8  |
| TEMPERATURE CONTROLS, CAB .....     | 3-8  |
| CAB AIR FILTERS .....               | 3-9  |
| AIR CONDITIONING SYSTEM .....       | 3-10 |
| Air conditioning .....              | 3-11 |

### OPERATOR'S SEAT

|                             |      |
|-----------------------------|------|
| DOCUMENTATION STORAGE ..... | 3-13 |
| OPERATOR'S SEAT .....       | 3-13 |
| SEAT BELT .....             | 3-15 |

### INSTRUCTOR'S SEAT

|   |      |
|---|------|
| INSTRUCTIONAL SEAT (where fitted) ..... | 3-15 |
|---|------|

---

## FORWARD CONTROLS

|   |      |
|---|------|
| LIGHT-/ TURN LEVER .....  | 3-16 |
| KEY- START SWITCH .....   | 3-17 |
| STEERING COLUMN .....   | 3-17 |
| 12 x 4 SYNCHROMESH TRANSMISSION .....   | 3-19 |
| 12 x 12 SYNCHRO SHUTTLE TRANSMISSION .....  | 3-21 |
| 12 X 12 POWER SHUTTLE TRANSMISSION .....  | 3-23 |
| TRANSMISSION WITH CREEPER AND SHUTTLE TRANSMISSION WITH CREEPER<br>AND SHUTTLE – 30 km/h (19 mph) ..... | 3-26 |
| FOUR WHEEL DRIVE .....  | 3-28 |
| ELECTRO-HYDRAULICALLY OPERATED FOUR-WHEEL DRIVE .....   | 3-29 |
| MECHANICAL DIFFERENTIAL LOCK .....  | 3-30 |
| LIMITED SLIP DIFFERENTIAL LOCK .....  | 3-31 |
| Electrohydraulic differential lock .....  | 3-32 |
| DIFFERENTIAL LOCK OPERATING .....   | 3-33 |

## LEFT-HAND SIDE CONTROLS

|                                 |      |
|---------------------------------|------|
| LEFT-HAND SIDE CONTROLS .....   | 3-34 |
| REAR POWER TAKE-OFF (PTO) ..... | 3-34 |

## RIGHT-HAND SIDE CONTROLS

|                                |      |
|--------------------------------|------|
| RIGHT-HAND SIDE CONTROLS ..... | 3-35 |
|--------------------------------|------|

## ANALOGUE/ DIGITAL INSTRUMENT CLUSTER

|                                    |      |
|------------------------------------|------|
| INSTRUMENT CLUSTER .....           | 3-36 |
| GAUGES .....                       | 3-38 |
| INDICATOR AND WARNING LIGHTS ..... | 3-39 |

## 4 OPERATING INSTRUCTIONS

### STARTING THE UNIT

|   |     |
|---|-----|
| BEFORE OPERATING THE TRACTOR .....              | 4-1 |
| BOOSTING THE TRACTOR BATTERY .....              | 4-1 |
| STARTING THE ENGINE .....                       | 4-2 |
| GRID HEATER COLD START AID (where fitted) ..... | 4-3 |

### STOPPING THE UNIT

|                           |     |
|---------------------------|-----|
| STOPPING THE UNIT .....   | 4-4 |
| STOPPING THE ENGINE ..... | 4-4 |

## 5 TRANSPORT OPERATIONS

### PREPARING FOR ROAD TRANSPORT

|   |     |
|---|-----|
| CARRYING THE TRACTOR ON A TRANSPORTER LOADING THE TRACTOR ONTO A<br>TRANSPORTER ..... | 5-1 |
|---|-----|

### RECOVERY TRANSPORT

|                          |     |
|--------------------------|-----|
| TOWING THE TRACTOR ..... | 5-2 |
|--------------------------|-----|

---

## 6 WORKING OPERATIONS

### Rear mechanical control

|  |      |
|--|------|
| P.T.O. OPERATING PRECAUTIONS.....                            | 6-1  |
| P.T.O. OPERATING PRECAUTIONS.....                            | 6-2  |
| P.T.O. OPERATING PRECAUTIONS.....                            | 6-4  |
| INDEPENDENT POWER TAKE OFF (PTO) POWER TAKE-OFF OPERATION .. | 6-5  |
| GROUND DRIVE P.T.O. (where fitted) .....                     | 6-7  |
| INDEPENDENT POWER TAKE OFF (PTO) .....                       | 6-8  |
| INDEPENDENT POWER TAKE-OFF SERVO ASSIST PTO .....            | 6-9  |
| GROUND DRIVE P.T.O. (where fitted) .....                     | 6-10 |
| POWER TAKE OFF (PTO) SPEEDS.....                             | 6-11 |
| Two speed Power Take-Off (PTO) systems .....                 | 6-12 |
| Two speed PTO systems .....                                  | 6-12 |
| HYDRAULIC LIFT .....   | 6-21 |
| EXTERNAL HYDRAULIC POWER LIFT CONTROLS (where fitted) .....  | 6-22 |
| HYDRAULIC LIFT .....   | 6-23 |
| HYDRAULIC LIFT -CONDITIONS OF USE .....                      | 6-26 |
| THREE POINT HITCH .....                                      | 6-27 |
| THREE POINT HITCH .....                                      | 6-27 |
| EQUIPMENT MOUNTING POINTS.....                               | 6-30 |
| Lower links .....  | 6-31 |
| REMOTE CONTROL VALVES .....                                  | 6-32 |
| REMOTE CONTROL VALVES .....                                  | 6-35 |

### WHEEL TRACK ADJUSTMENT

|  |      |
|--|------|
| FRONT WHEEL TRACK ADJUSTMENT (two wheel drive).....        | 6-38 |
| WHEEL TRACK ADJUSTMENT - 4WD FRONT WHEEL AND REAR WHEEL .. | 6-40 |
| Adjustment of the steering angles .....                    | 6-43 |
| FRONT WHEEL FENDERS .....                                  | 6-44 |

### Wheels

|                                  |      |
|----------------------------------|------|
| Tires .....                      | 6-45 |
| TIRES - GENERAL INFORMATION..... | 6-47 |
| Tire combinations.....           | 6-49 |

### BALLASTING AND TIRES

|  |      |
|--|------|
| IRON WEIGHTS (where fitted) .....      | 6-51 |
| LIQUID BALLAST LIQUID BALLASTING ..... | 6-51 |
| LIQUID BALLAST .....                   | 6-52 |
| MAXIMUM PERMITTED WEIGHTS .....        | 6-55 |
| STATIC WEIGHT DISTRIBUTION .....       | 6-57 |

## 7 MAINTENANCE

### GENERAL INFORMATION

|   |     |
|---|-----|
| INTRODUCTION .....                              | 7-1 |
| DIESEL FUEL QUALITY SPECIFICATIONS.....         | 7-2 |
| MISCELLANEOUS CHECKS .....                      | 7-3 |
| PROTECTIVE DEVICES .....                        | 7-4 |
| Engine cooling system - Basic instructions..... | 7-6 |

---

## MAINTENANCE CHART

|                         |     |
|-------------------------|-----|
| MAINTENANCE CHART ..... | 7-7 |
|-------------------------|-----|

### As required maintenance

|   |      |
|---|------|
| Engine clutch .....   | 7-9  |
| Brake pedal adjustment Adjusting height of service brake pedals ..... | 7-9  |
| Alternator belt .....   | 7-10 |
| Air conditioner compressor belt .....                                 | 7-10 |
| Air filter dust valve .....   | 7-10 |
| Transmission oil cooler .....   | 7-11 |
| Tire pressures .....  | 7-11 |
| Wheel nuts tightening torque .....                                    | 7-11 |

### Warning light on

|                                      |      |
|--------------------------------------|------|
| Main cartridge, dry air filter ..... | 7-12 |
| Brake fluid reservoir level .....    | 7-13 |
| Fuel filter water drain .....        | 7-14 |

### EVERY 10 HOURS OR EACH DAY

|  |      |
|--|------|
| Engine oil level .....                                   | 7-15 |
| Battery .....  | 7-15 |
| Radiator expansion tank .....                            | 7-16 |
| Windscreen washer bottle .....                           | 7-16 |
| Cab air filter .....                                     | 7-16 |
| Cab recirculated air filter .....                        | 7-17 |
| Radiator, oil cooler and air conditioner condenser ..... | 7-18 |
| Radiator, oil cooler and air conditioner condenser ..... | 7-19 |
| Cab air-conditioning system .....                        | 7-19 |

### EVERY 50 HOURS

|                                  |      |
|----------------------------------|------|
| Hydraulic lift and linkage ..... | 7-20 |
| 4WD steering cylinders .....     | 7-20 |
| 4WD front axle rear pivot .....  | 7-21 |
| 4WD front axle front pivot ..... | 7-21 |
| 2WD steering cylinder .....      | 7-21 |
| 2WD right-hand stub axle .....   | 7-22 |
| 2WD left-hand stub axle .....    | 7-22 |
| 2WD front axle pivot .....       | 7-22 |

### EVERY 100 HOURS

|                                 |      |
|---------------------------------|------|
| Air conditioner condenser ..... | 7-23 |
| Intercooler .....               | 7-23 |

### EVERY 300 HOURS

|   |      |
|---|------|
| Change engine oil and filter .....                  | 7-24 |
| Transmission and hydraulic circuit oil filter ..... | 7-25 |
| Engine air cleaner outer element .....              | 7-25 |

---

|  |      |
|--|------|
| Check final drives fluid level .....                 | 7-25 |
| Rear transmission and hydraulic lift oil level ..... | 7-26 |
| Front Axle Housing Oil Level - 4WD .....             | 7-26 |
| Handbrake .....                                      | 7-27 |
| Front Axle Reduction Hubs - 4WD .....                | 7-27 |
| 2WD front wheels .....                               | 7-27 |
| 4WD front axle swivel bearings .....                 | 7-28 |
| Alternator belt .....                                | 7-28 |
| Transmission oil filter .....                        | 7-28 |

## EVERY 500 HOURS

|                      |      |
|----------------------|------|
| Fuel filter .....    | 7-29 |
| Fuel prefilter ..... | 7-30 |

## EVERY 1200 HOURS OR ANNUALLY

|  |      |
|--|------|
| Cab air filter .....                                   | 7-31 |
| Air cleaner .....                                      | 7-31 |
| Fuel tank .....  | 7-31 |
| Drive Shaft Sleeve for 4WD Front Axle Connection ..... | 7-32 |

## EVERY 1200 HOURS OR EVERY 2 YEARS

|  |      |
|--|------|
| Front axle housing oil, 4WD .....          | 7-32 |
| Front axle final drive hubs oil, 4WD ..... | 7-33 |
| Engine valves .....                        | 7-33 |
| Transmission and hydraulic oil .....       | 7-33 |
| Rear axle final reduction oil .....        | 7-34 |

## EVERY 1800 HOURS

|                      |      |
|----------------------|------|
| Fuel injectors ..... | 7-35 |
|----------------------|------|

## EVERY 3600 HOURS

|  |      |
|--|------|
| Engine cooling system - Change fluid ..... | 7-35 |
|--|------|

## GENERAL MAINTENANCE

|  |      |
|--|------|
| Bleeding the fuel injection system ..... | 7-36 |
| Bleeding the brake system .....          | 7-37 |
| Battery fluid level .....                | 7-37 |
| Fuses and relay box .....                | 7-39 |
| Headlights - adjust .....                | 7-42 |
| Replacing front headlight bulbs .....    | 7-42 |
| Cleaning the tractor .....               | 7-44 |

## STORAGE

|                       |      |
|-----------------------|------|
| TRACTOR STORAGE ..... | 7-47 |
|-----------------------|------|

## 8 TROUBLESHOOTING

### FAULT CODE RESOLUTION

|                    |     |
|--------------------|-----|
| Introduction ..... | 8-1 |
|--------------------|-----|

## ALARM(S)

|   |     |
|---|-----|
| ENGINE .....                                | 8-2 |
| Electrical System .....                     | 8-4 |
| Hydraulic System .....                      | 8-5 |
| THREE POINT HITCH .....                     | 8-6 |
| BRAKES .....                                | 8-7 |
| CAB .....                                   | 8-7 |
| Front loader bucket - troubleshooting ..... | 8-8 |

## 9 SPECIFICATIONS

|   |      |
|---|------|
| Introduction .....                                  | 9-1  |
| Fluid capacities and lubricant specifications ..... | 9-1  |
| Consumables .....                                   | 9-2  |
| Front-end loader .....                              | 9-3  |
| General dimensions .....                            | 9-5  |
| Weights .....                                       | 9-7  |
| Tractor weights .....                               | 9-8  |
| Engine specifications .....                         | 9-8  |
| Engine cooling system .....                         | 9-9  |
| Fuel system .....                                   | 9-9  |
| Clutch .....  | 9-10 |
| Transmission .....                                  | 9-10 |
| Power take-off .....                                | 9-11 |
| Hydraulic lift .....                                | 9-11 |
| Hydraulic lift .....                                | 9-11 |
| Three point hitch - capacities .....                | 9-13 |
| Three-point hitch .....                             | 9-13 |
| Front wheels .....                                  | 9-13 |
| Steering .....                                      | 9-13 |
| Brakes .....  | 9-14 |
| Cab .....   | 9-14 |
| Towing devices .....                                | 9-15 |
| Electrical system .....                             | 9-15 |
| Instruments and accessories .....                   | 9-16 |

## 10 ACCESSORIES

|  |       |
|--|-------|
| ACCESSORIES .....                            | 10-1  |
| ROTATING BEACON .....                        | 10-1  |
| QUICK HITCH .....                            | 10-2  |
| SWINGING DRAWBARS .....                      | 10-4  |
| HYDRAULIC TRAILER BRAKES .....               | 10-7  |
| HYDRAULIC TRAILER BRAKES .....               | 10-9  |
| Joystick .....                               | 10-10 |
| Front-end loader .....                       | 10-11 |
| Front end loader operation .....             | 10-16 |
| HITCH AND WORKING TOOLS - ADJUSTMENT .....   | 10-17 |
| Front end loader operation .....             | 10-19 |
| Front end loader - installation .....        | 10-24 |
| Front end loader - removal .....             | 10-26 |
| Front end loader bucket - installation ..... | 10-27 |

---

|   |       |
|---|-------|
| Front end loader bucket - removal .....   | 10-28 |
| Front end loader maintenance .....        | 10-29 |
| MINIMUM HARDWARE TIGHTENING TORQUES ..... | 10-32 |

## 11 FORMS AND DECLARATIONS

|  |      |
|--|------|
| Service record - 1st 50 hour, Owner copy 1st 50 hour, Owner copy .....     | 11-1 |
| Service record - 1st 50 hour, Dealer copy 1st 50 hour, Dealer's copy ..... | 11-3 |





# 1 - GENERAL INFORMATION

## METRIC AND IMPERIAL UNITS ABBREVIATIONS

| Typical applications                       | Metric unit            |                 | Imperial unit         |                    |
|--|------------------------|-----------------|-----------------------|--------------------|
|  | Name                   | Symbol          | Name                  | Symbol             |
| <b>Area (Land area)</b>                    |                        |                 |                       |                    |
|  | hectare                | ha              | acre                  | ac                 |
|  | square meter           | m <sup>2</sup>  | square foot           | ft <sup>2</sup>    |
|  | square millimeter      | mm <sup>2</sup> | square inch           | in <sup>2</sup>    |
|  |                        |                 | square inch           | in <sup>2</sup>    |
| <b>Electricity</b>                         |                        |                 |                       |                    |
|  | ampere                 | A               | ampere                | A                  |
|  | volt                   | V               | volt                  | V                  |
|  | microfarad             | μF              | microfarad            | μF                 |
|  | ohm                    | Ω               | ohm                   | Ω                  |
| <b>Force</b>                               |                        |                 |                       |                    |
|  | kilonewton             | kN              | pound                 | lb                 |
|  | newton                 | N               | pound                 | lb                 |
| <b>Force per length</b>                    |                        |                 |                       |                    |
|  | newton per meter       | N/m             | pound per foot        | lb/ft              |
|  |                        |                 | pound per inch        | lb/in              |
| <b>Frequency</b>                           |                        |                 |                       |                    |
|  | megahertz              | MHz             | megahertz             | MHz                |
|  | kilohertz              | kHz             | kilohertz             | kHz                |
|  | hertz                  | Hz              | hertz                 | Hz                 |
| <b>Frequency - Rotational</b>              |                        |                 |                       |                    |
|  | revolution per minute  | r/min           | revolution per minute | r/min <sup>a</sup> |
|  |                        | rpm             |                       | rpm                |
| <b>Length</b>                              |                        |                 |                       |                    |
|  | kilometer              | km              | mile                  | mi                 |
|  | meter                  | m               | foot                  | ft                 |
|  | centimeter             | cm              | inch                  | in                 |
|  | millimeter             | mm              | inch                  | in                 |
|  | micrometer             | μm              |                       |                    |
| <b>Mass</b>                                |                        |                 |                       |                    |
|  | kilogram               | kg              | pound                 | lb                 |
|  | gram                   | g               | ounce                 | oz                 |
|  | milligram              | mg              |                       |                    |
| <b>Mass per Mass</b>                       |                        |                 |                       |                    |
|  | milligram per kilogram | mg/ kg          |                       |                    |
| <b>Power</b>                               |                        |                 |                       |                    |
|  | kilowatt               | kW              | horsepower            | Hp                 |
|  | watt                   | W               | Btu per hour          | Btu/hr             |
|  |                        |                 | Btu per minute        | Btu/min            |
| <b>Pressure or stress (Force per area)</b> |                        |                 |                       |                    |
|  | kilopascal             | kPa             | pound per square inch | psi                |
|  |                        |                 | inch of mercury       | inHg               |
|  | pascal                 | Pa              | inch of water         | inH <sub>2</sub> O |
|  | megapascal             | MPa             | pound per square inch | psi                |

1 - GENERAL INFORMATION

| Typical applications  | Metric unit            |                     | Imperial unit         |                      |
|---|------------------------|---------------------|-----------------------|----------------------|
|   | Name                   | Symbol              | Name                  | Symbol               |
| Temperature (other than Thermodynamic)                                    |                        |                     |                       |                      |
|   | degrees Celsius        | °C                  | degrees Fahrenheit    | °F                   |
| Time  |                        |                     |                       |                      |
|   | hour                   | h                   | hour                  | h                    |
|   | minute                 | min                 | minute                | min                  |
|   | second                 | s                   | second                | s                    |
| Torque (includes Bending moment, Moment of force, and Moment of a couple) |                        |                     |                       |                      |
|   | newton meter           | N m                 | pound foot            | lb ft                |
|   |                        |                     | pound foot            | lb in                |
| Velocity  |                        |                     |                       |                      |
|   | kilometer per hour     | km/h                | mile per hour         | mph                  |
|   | meter per second       | m/s                 | foot per second       | ft/s                 |
|   | millimeter per second  | mm/s                | inch per second       | in/s                 |
|   | meter per minute       | m/min               | foot per minute       | ft/min               |
| Volume (includes Capacity)  |                        |                     |                       |                      |
|   | cubic meter            | m <sup>3</sup>      | cubic yard            | yd <sup>3</sup>      |
|   |                        |                     |                       | cu yd                |
|   | liter                  | l                   | cubic inch            | in <sup>3</sup>      |
|   | liter                  | l                   | US gallon             | US gal               |
|   |                        |                     | UK gallon             | UK gal               |
|   |                        |                     | US quart              | US qt                |
|   |                        |                     | UK quart              | UK qt                |
|   | milliliter             | ml                  | fluid ounce           | fl oz                |
| Volume per time (includes Discharge and Flow rate)                        |                        |                     |                       |                      |
|   | cubic meter per minute | m <sup>3</sup> /min | cubic foot per minute | ft <sup>3</sup> /min |
|   | liter per minute       | l/min               | US gallon per minute  | US gal/min           |
|   | milliliter per minute  | ml/min              | UK gallon per minute  | UK gal/min           |
| Sound power level and Sound pressure level                                |                        |                     |                       |                      |
|   | decibel                | dB                  | decibel               | dB                   |

## TO THE OWNER

### TO THE OWNER

#### GENERAL

This Manual has been prepared to assist you in the correct procedure for running-in, driving and operating and for the maintenance of your new tractor. Read this Manual carefully. Your tractor is intended for use in normal and customary agricultural applications.

If at any time you require advice concerning your tractor, do not hesitate to contact your NEW HOLLAND dealer. He has factory trained personnel, genuine manufacturers' parts and the necessary equipment to carry out all your service requirements.

Your tractor has been designed and built to give maximum performance, economy and ease of operation under a wide variety of operating conditions. Prior to delivery, the tractor was carefully inspected, both at the factory and by your dealer to ensure that it reaches you in optimum condition. To maintain this condition and ensure trouble-free operation, it is important that the routine services, as specified in 7-1 of this Manual, are carried out at the recommended intervals.

#### CLEANING THE TRACTOR

Your tractor is a state-of-the-art machine with user friendly controls. This should be borne in mind when cleaning the tractor, particularly if using a high pressure washer. Even though every precaution has been taken to safeguard electrical components and connections, the pressure generated by some of these machines is such that complete protection against water ingress cannot be guaranteed.

When using a high pressure washer, do not stand too close to the tractor and avoid directing the jet at electronic components, electrical connections, breathers, seals, filler caps, etc. Never direct a cold water jet at a hot engine or exhaust.

#### SAFETY

2-1 lists the precautions to be observed to ensure your safety and the safety of others. Read the safety precautions and follow the advice offered before operating the tractor.

#### FIRST 50 HOUR SERVICE

In Section 11, at the back of this Manual, you will find the 50-hour service reports.

After you have operated the tractor for 50 hours, take your tractor, together with this Manual, to your dealer. He will then perform the factory recommended 50-hour service and complete the service report sheets 11-1. The first

sheet (page 11-1) is the dealer's copy and should be removed by the dealer after the service has been carried out. The second sheet (page 11-3) is your copy of the service performed. Ensure that you and the dealer sign both copies.

#### SERVICE PARTS

It should be pointed out that genuine parts have been examined and approved by the Company. The installation and/or use of 'non-genuine' products could have negative effects upon the design characteristics of your tractor and thereby affect its safety. The Company is not liable for any damage caused by the use of 'non-genuine' parts and accessories. Only genuine replacement parts should be used. The use of non-genuine parts may invalidate legal approvals associated with this product.

It is prohibited to carry out any modifications to the tractor unless specifically authorised, in writing, by the After Sales Service department of the Company.

#### WARRANTY

Your tractor is warranted according to legal rights in your country and the contractual agreement with the selling dealer. No warranty shall, however, apply if the tractor has not been used, adjusted and maintained according to the instructions given in the Operator's Manual.

#### ABOUT THIS MANUAL

This Manual gives information for use of this tractor, as intended and under the conditions foreseen by the manufacturer during normal operation and routine service and maintenance.

- Normal operation means the use of the tractor for the purpose intended by the manufacturer by an operator familiar with the tractor and the mounted or towed equipment and complying with the information for operation and safe practices, as specified by the manufacturer in this Manual and by the signs on the tractor and the equipment.
- Normal operation includes the preparation and storage of the tractor, swinging components into work position and vice versa, adding or removing ballast and picking up and setting off attachments
- Normal operation includes the adjustment and setting of the tractor and equipment, for the specific condition of the field and/or the crop
- Routine service and maintenance means activities that must be done daily by an operator familiar with the tractor characteristics and complying with the information for routine service and safe practices, as specified by the manufacturer in this Manual and by signs on the tractor, in order to maintain its proper function. Routine service includes activities such as fueling, cleaning,

washing, topping up fluid levels, greasing, replacing of consumable articles such as lamp bulbs

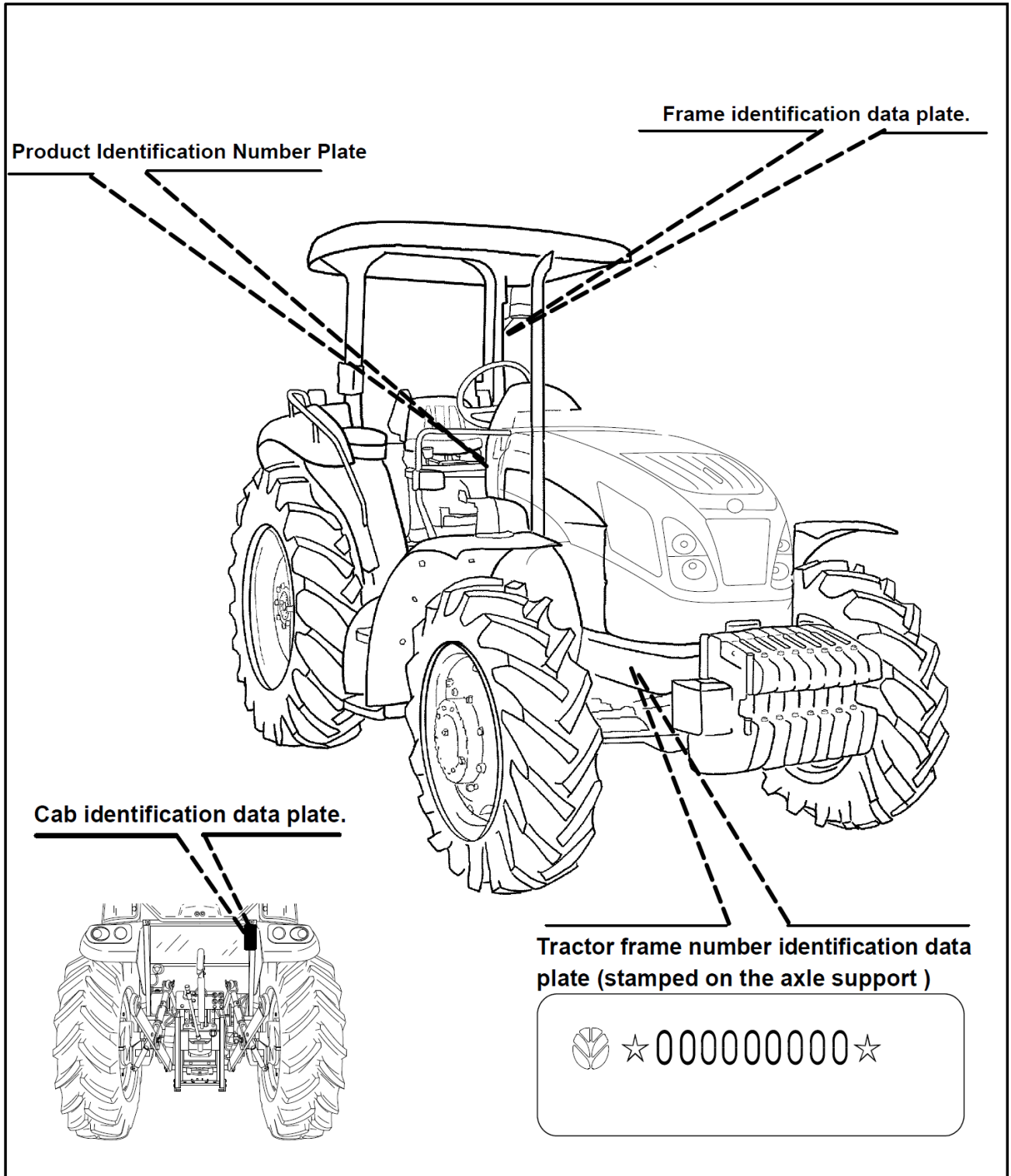
- This Manual is not giving all the information related to periodical service, converting and repairs to be carried out by professional service personnel. For some of the latter activities, there may be a need for appropriate facilities, technical skills and tools which are not supplied with the tractor, please refer to your dealer or authorised workshop
- Periodical service means activities that must be done at defined intervals by trained personnel familiar with the tractor characteristics and which are complying with the information for periodical service and safe practices, as partly specified by the manufacturer in this Manual and in other Company literature, in order to maintain the expected life time of the tractor
- Converting means activities that must be done by professional service personnel familiar with the tractor characteristics and complying with the information for converting, as partly specified by the manufacturer in this Manual, in assembly instructions or in other Company literature, in order to fit the tractor to a specific configuration
- Repair means activities that must be done by professional service personnel only familiar with the tractor characteristics and complying with the information for repair, as specified by the manufacturer in the dealer's workshop Manual, in order to restore the proper function of the tractor after a failure or degradation of performance

# PRODUCT IDENTIFICATION

## TRACTOR IDENTIFICATION PLATES

Serial numbers identify the tractor and its main components. The identification data must be supplied by the

dealer for requests for spare parts or service operations. Identification data is of fundamental importance in the event of theft of the tractor. The location of the various identification data is shown below.



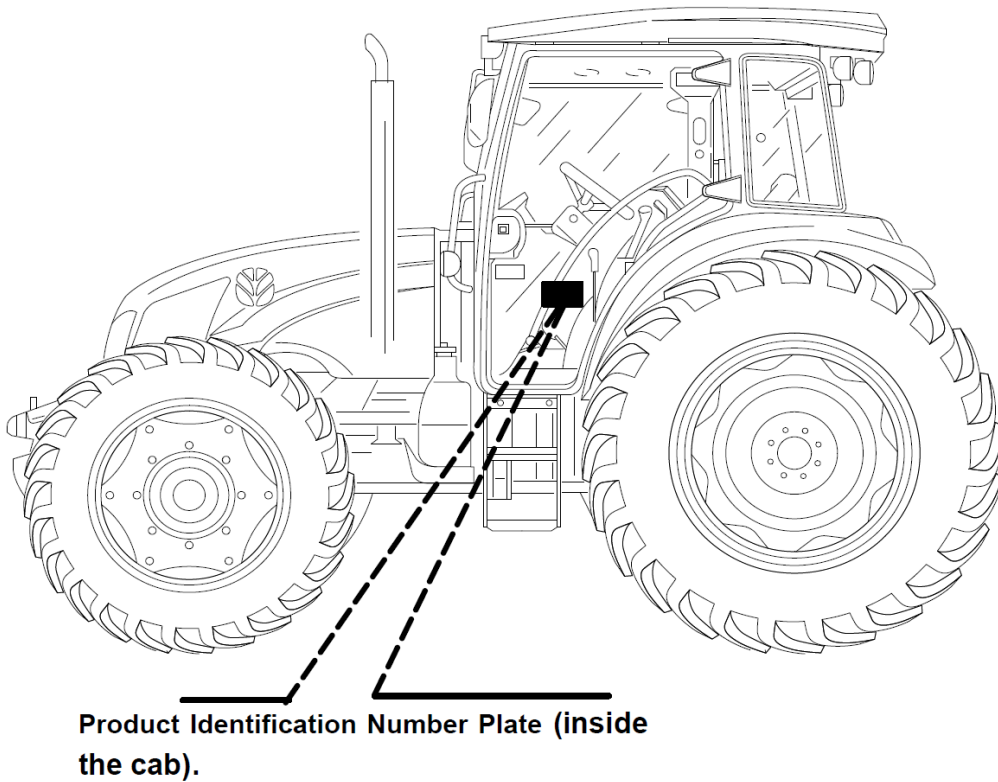
TD\_IR\_GENEL 1

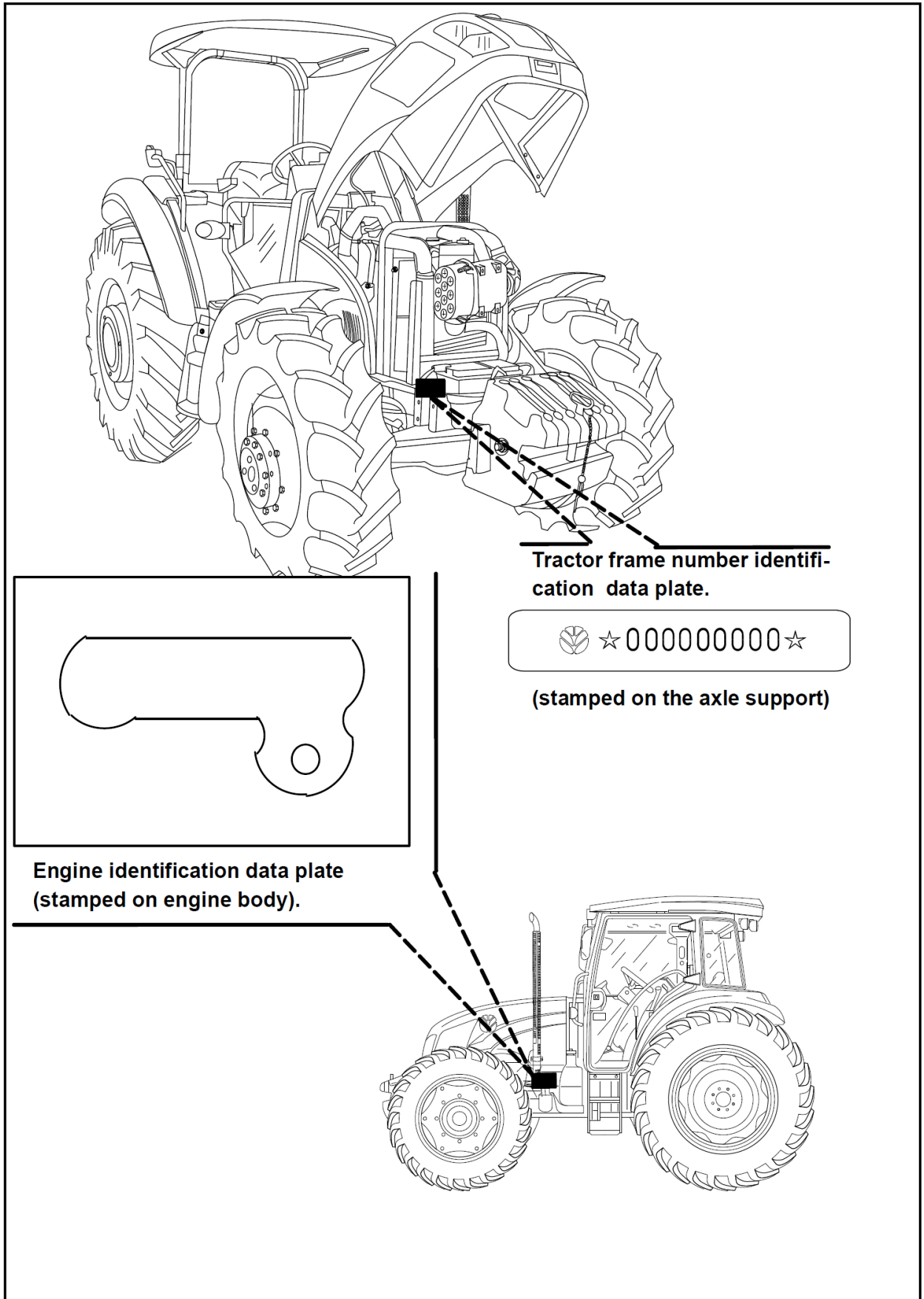
## Product Identification Number Plate

The Product Identification Number plate provides important information on tractor and towed equipment weight combinations. This plate can be found on the right-hand side of the cab exterior trim panel, below the rear window. The figures shown are the maximum permissible vehicle and towing weights and should not be exceeded, to do so may affect the safe operation of the tractor. See **10-4**.

| CNH EUROPE HOLDING S. A.  |   |
|---|---|
| TYPE :  |   |
| HOMOLOGATION :  |   |
| IDENTIFICATION :  |   |
| <b>WEIGHTS (Kg)</b>   |   |
| TOTAL PERMISSIBLE MASS  |   |
| PERMISSIBLE FRONT AXLE LOAD   |   |
| PERMISSIBLE REAR AXLE LOAD  |   |
| PERMISSIBLE TOWABLE MASS  |   |
| - UNBRAKED TOWABLE MASS   |   |
| - INDEPENDENTLY BRAKED TOWABLE MASS   |   |
| - DEFER BRAKED TOWABLE MASS   |   |
| - TOWABLE MASS FITTED WITH AN ASSISTED BRAKING SYSTEM   |   |
|  Made in Turkey |  |

000002 2





Thank you so much for reading.  
Please click the “Buy Now!”  
button below to download the  
complete manual.



After you pay.

You can download the most  
perfect and complete manual in  
the world immediately.

Our support email:

[ebooklibonline@outlook.com](mailto:ebooklibonline@outlook.com)