

**Model SI
Industrial Tractor**
Operators Manual

5669

Reprinted

CASE III






THIS SAFETY ALERT SYMBOL INDICATES IMPORTANT SAFETY MESSAGES IN THIS MANUAL. WHEN YOU SEE THIS SYMBOL, CAREFULLY READ THE MESSAGE THAT FOLLOWS AND BE ALERT TO THE POSSIBILITY OF PERSONAL INJURY OR DEATH.

M171B

If Safety Decals on this machine use the words **Danger, Warning or Caution**, which are defined as follows:

- **DANGER:** Indicates an immediate hazardous situation which if not avoided, will result in death or serious injury. The color associated with Danger is RED.
- **WARNING:** Indicates an potentially hazardous situation which if not avoided, will result in serious injury. The color associated with Warning is ORANGE.
- **CAUTION:** Indicates an potentially hazardous situation which if not avoided, may result in minor or moderate injury. It may also be used to alert against unsafe practices. The color associated with Caution is YELLOW.

If Safety Decals on this machine are ISO two panel Pictorial, decals are defined as follows:

- The first panel indicates the nature of the hazard.
- The second panel indicates the appropriate avoidance of the hazard.
- Background color is YELLOW.
- Prohibition symbols such as   and  if used, are RED.



WARNING

IMPROPER OPERATION OF THIS MACHINE CAN CAUSE INJURY OR DEATH. BEFORE USING THIS MACHINE, MAKE CERTAIN THAT EVERY OPERATOR:

- Is instructed in safe and proper use of the machine.
- Reads and understands the Manual(s) pertaining to the machine.
- Reads and understands ALL Safety Decals on the machine.
- Clears the area of other persons.
- Learns and practices safe use of machine controls in a safe, clear area before operating this machine on a job site.

It is your responsibility to observe pertinent laws and regulations and follow Case Corporation instructions on machine operation and maintenance.

TO PURCHASERS OF CASE INDUSTRIAL TRACTORS

Congratulations on your purchase of a Case Tractor and welcome to the ever-increasing number of satisfied Case Owners.

The dependability and economical performance of your new Case Tractor will prove that you were wise in making this choice.

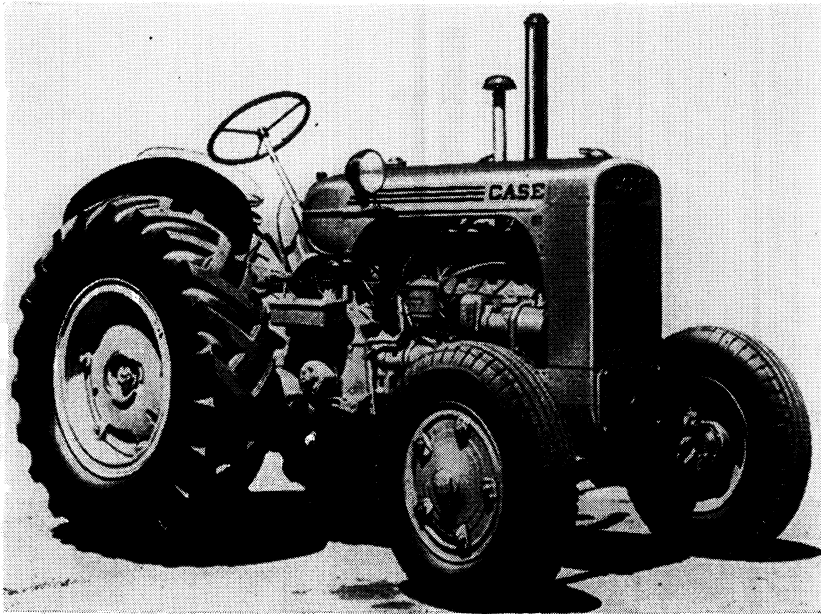
The organization back of your tractor has been building quality equipment for more than a century. Your Case Tractor was built in one of the largest and best equipped plants in the world. In this factory quality materials, precision machinery, high grade workmanship, thorough inspection, and complete testing equipment are combined to give you the best in performance and economical operation.

The care which you give your tractor will have a great deal to do with the service and satisfaction you get from it. By observing the precautions and suggestions in this manual, your Case Tractor will serve you well for many years. Make this manual your guide. Should you need information not covered here, or should your tractor require special servicing, contact your Case Dealer. He has trained men who are kept informed on the best methods of servicing CASE Industrial Equipment in the field or in his shop.

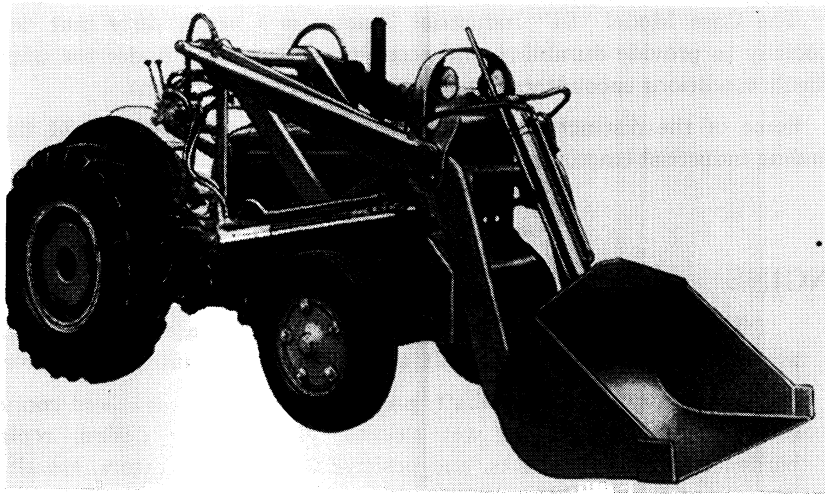
When it becomes necessary, after long use, to replace certain parts on your tractor, be sure to use only genuine Case Parts, insuring proper fit and continued good service. These may be obtained from your Case Dealer. It is always helpful to provide him with the Model and Serial Number of your tractor in addition to a description and part number, if available, of the parts required.

TABLE OF CONTENTS

	Page
SERIAL NUMBER	6
GENERAL SPECIFICATIONS	7
LUBRICATION	17
Recommended Engine and Transmission Lubricants	19
Hydraulic System Capacities and Oil Recommendations	20
Lubrication Chart	20
Engine Lubrication	24
Transmission Lubrication	28
Hydraulic Control	30
OPERATING INSTRUCTIONS	33
Run-In Procedure	35
Important Pre-Starting Information	36
Starting Instructions	37
Wheel and Tire Equipment	44
Drawbar	46
Steering The Tractor	46
Hydraulic Control System	47
Constant Running Power Take-Off	49
Belt Pulley Work	52
Fuel and Fuel Storage	53
Low Cost Fuel Equipped Tractors	55
Cold Weather Operation	58
Periodic Checks During Operation	59
SERVICE SUGGESTIONS	61
PREVENTIVE MAINTENANCE	69
Lubrication	71
Cooling System	72
Air Cleaner	78
Fuel Strainer	79
Carburetor	80
Governor and Engine Speed	82
Valve (Tappet) Clearance	83
Oil Pump	84
Crankcase Breather	85
Transmission Breather	86
Spark Plugs	86
Magneto	87
Starting and Lighting Equipment	91
Foot Clutch Adjustment	95
Belt Pulley Adjustment	96
Adjusting Differential Brakes	96
Servicing Front Wheel Bearings	97
Adjusting the Steering Mechanism	98
Adjusting Power Take-Off Clutch	100
Tractor Storage	101
EXTRA AND OPTIONAL EQUIPMENT	105
INDEX	114
WARRANTY	119

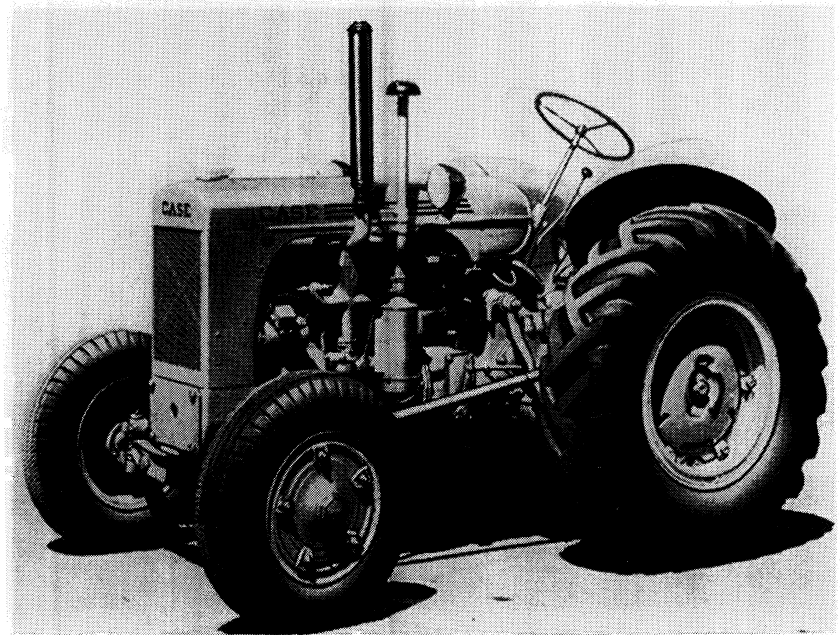


Right Hand View of Model SI Tractor



Right Hand View of Model 30 Powerloader which uses the
SI Tractor as the Power Unit

INTRODUCTION



Left Hand View of Model SI Tractor

The Case Model "SI" Industrial Tractor is a heavy duty unit designed especially to provide durability and economy of operation under the unusually difficult conditions encountered in commercial type applications.

Some of the distinctive features that make the Case Model SI the outstanding industrial tractor in its size class are:

ENGINE

The four cylinder Case designed and manufactured engine is built to provide continuous service with a minimum of maintenance and repair.

The heavy duty crankshaft, precision type fitted main and connecting rod bearings, replaceable wet sleeves, valve-in-head design, replaceable hardened valve seat inserts, and positive type valve rotators, are all items included as Standard Equipment, which add to the length of service life and the economy of operation.

Dependable ignition spark is supplied by the dust and moisture protected Model 41 Case Magneto.

HEAVY DUTY TRANSMISSION

The transmission gears are mounted on short heavy cross shafts. This transmission design prevents distortion and lengthens the transmission service life under difficult operating conditions. The spiral bevel gears are approximately equal in size and are mounted at the front of the transmission case ahead of the reduction gears. The front location of the spiral bevel gears reduces the tooth loading and lengthens gear life.

Heavy duty roller chains are used in the final drive. The overall design of the transmission, plus the roller chain final drive, reduces transmission power loss to a minimum.

EASY STEERING

The irreversible type of Worm and Gear Steering eliminates "Steering Wheel Fight" when driving the tractor over rough or rocky ground. The ease of steering reduces operator fatigue.

CONVENIENT LOCATION OF CONTROLS

The foot throttle, traction clutch, foot brake, steering wheel, and instrument panel are conveniently located so that the operator has positive control of the unit from a comfortable seated position.

CASE COMFORT SEAT

The Case Comfort Seat utilizes adjustable torsion type rubber shock absorbers to provide a "floating" ride.

The two way action of the shock absorbers smoothes out the bumps resulting in a smooth ride even when the tractor is operated over the roughest ground conditions.

DOUBLE DISC INDEPENDENT DIFFERENTIAL BRAKES

The double disc, self energizing type differential brakes utilize the momentum of the tractor in applying powerful braking action.

Individual pedals are provided so that each rear wheel can be braked separately for steering assistance. The brake pedals can be latched together for safe road travel or for use as parking brakes.

One simple adjustment is provided for each assembly to take up normal lining wear.

EASILY ADAPTED FOR USE WITH ALLIED EQUIPMENT

The Case Model SI Industrial Tractor can be used with many different types of mounted and pull behind equipment. A constant running power take-off and hydraulic system, as well as a belt pulley, can be purchased as extra equipment for additional power sources.

NOTE: The terms "Right Hand" and "Left Hand" whenever used in this manual apply to the tractor when facing in the direction the tractor will move in forward operation.

SERIAL NUMBER

When ordering parts from your Authorized Case Industrial Dealer and in all contacts or correspondence with your dealer relative to the tractor, always specify the serial number and model of your tractor.

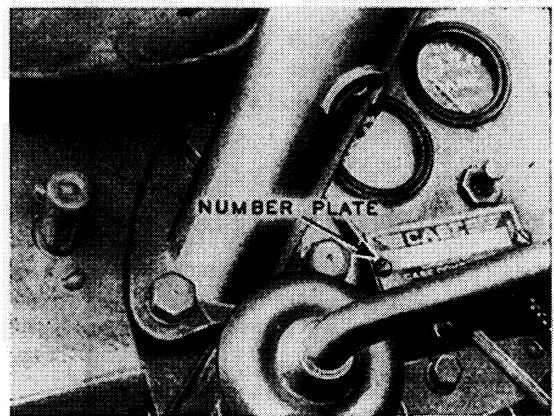


Figure 1.



Figure 2.

The serial number is stamped on the number plate located on the instrument panel, Figure 1, and is also stamped on the left rear side of the engine block near the air cleaner, Figure 2.

I

**GENERAL SPECIFICATIONS
OF CASE MODEL SI
INDUSTRIAL TRACTOR**

Buy Now



Our support email:

ebooklibonline@outlook.com