

**500 Tractor**  
Operators Manual

5676








*THIS SAFETY ALERT SYMBOL INDICATES IMPORTANT SAFETY MESSAGES IN THIS MANUAL. WHEN YOU SEE THIS SYMBOL, CAREFULLY READ THE MESSAGE THAT FOLLOWS AND BE ALERT TO THE POSSIBILITY OF PERSONAL INJURY OR DEATH.*

M171B

If Safety Decals on this machine use the words **Danger, Warning or Caution**, which are defined as follows:

- **DANGER:** Indicates an immediate hazardous situation which if not avoided, will result in death or serious injury. The color associated with Danger is RED.
- **WARNING:** Indicates an potentially hazardous situation which if not avoided, will result in serious injury. The color associated with Warning is ORANGE.
- **CAUTION:** Indicates an potentially hazardous situation which if not avoided, may result in minor or moderate injury. It may also be used to alert against unsafe practices. The color associated with Caution is YELLOW.

If Safety Decals on this machine are ISO two panel Pictorial, decals are defined as follows:

- The first panel indicates the nature of the hazard.
- The second panel indicates the appropriate avoidance of the hazard.
- Background color is YELLOW.
- Prohibition symbols such as   and  if used, are RED.



# WARNING

IMPROPER OPERATION OF THIS MACHINE CAN CAUSE INJURY OR DEATH. BEFORE USING THIS MACHINE, MAKE CERTAIN THAT EVERY OPERATOR:

- Is instructed in safe and proper use of the machine.
- Reads and understands the Manual(s) pertaining to the machine.
- Reads and understands ALL Safety Decals on the machine.
- Clears the area of other persons.
- Learns and practices safe use of machine controls in a safe, clear area before operating this machine on a job site.

It is your responsibility to observe pertinent laws and regulations and follow Case Corporation instructions on machine operation and maintenance.

## **TO PURCHASERS OF CASE DIESEL TRACTORS**

Congratulations on your purchase of a Case Diesel Tractor and welcome to the ever-increasing number of satisfied Case Owners.

The dependability and economical performance of your new Case Tractor will prove that you were wise in making this choice.

The organization back of your tractor has been building quality farm equipment for more than a century. Your Case Diesel Tractor was built in one of the largest and best equipped plants in the world. In this factory quality materials, precision machinery, high grade workmanship, thorough inspection, and complete testing equipment are combined to give you the best in performance and economical operation.

The care which you give your tractor will have a great deal to do with the service and satisfaction you get from it. By observing the precautions and suggestions in this manual, your Case Tractor will serve you well for many years. Make this manual your guide. Should you need information not covered here, or should your tractor require special servicing, contact your Case Dealer. He has trained men who are kept informed on the best methods of servicing Case Farming Equipment in the field or in his shop.

When it becomes necessary, after long use, to replace certain parts on your tractor, be sure to use only genuine Case Parts, which insure proper fit and continued good service. These may be obtained from your Case Dealer. It is always helpful to provide him with the Model and Serial Number of your tractor in addition to a description and part number, if available, of the parts required.

# TABLE OF CONTENTS

	Page
<b>Serial Number</b> .....	5
<b>General Specifications</b> .....	8
<b>Diesel Engine Fuel</b> .....	16
Fuel Specifications For a Suitable Number 2 Diesel Fuel.....	17
Fuel Recommendations For Cold Weather Operation.....	20
Fuel Handling and Storage.....	21
<b>Lubrication</b> .....	28
Pressure Fittings.....	31
Fuel Injection Pump.....	32
Engine Lubrication.....	33
Transmission Lubrication.....	39
Hydraulic Control System.....	41
Independent Power Take-off.....	43
Hydraulic Power Steering Attachment.....	44
<b>Operating Instructions</b> .....	47
Run-In Procedure.....	48
Operating Controls and Instrument Guide.....	50
Diesel Engine Starting Procedure.....	56
Stopping Engine.....	57
Cold Weather Operation.....	58
Rear Tire Sizes.....	64
Rear Wheel Weights.....	65
Drawbar.....	66
Independent Power Take-Off.....	68
Belt Pulley Work.....	72
Hydraulic Control Operation.....	73
Important Checks During Operation.....	77
<b>Service Suggestions</b> .....	80
<b>Preventive Maintenance</b> .....	90
Fuel System.....	92
Bleeding The Fuel System.....	94
Fuel Pressure Gauge.....	95
Checking Condition of Fuel Filters.....	96
Servicing Fuel Filters.....	97 thru 100
Air Cleaner.....	102
Crankcase Breathers.....	105
Cooling System.....	107
Power Steering Drive Belt.....	113
Starting and Lighting Equipment.....	114
Valve Tappet Clearance.....	122
Traction Clutch Adjustment.....	124
Power Take off Clutch Adjustment.....	126
Differential Brake Adjustment.....	127

Steering Mechanism Adjustment.....	128
Hydraulic Power Steering.....	129
Repacking and Adjusting Front Wheel Bearing.....	130
Transmission.....	131
Tractor Storage.....	132

<b>Index.....</b>	<b>134</b>
-------------------	------------

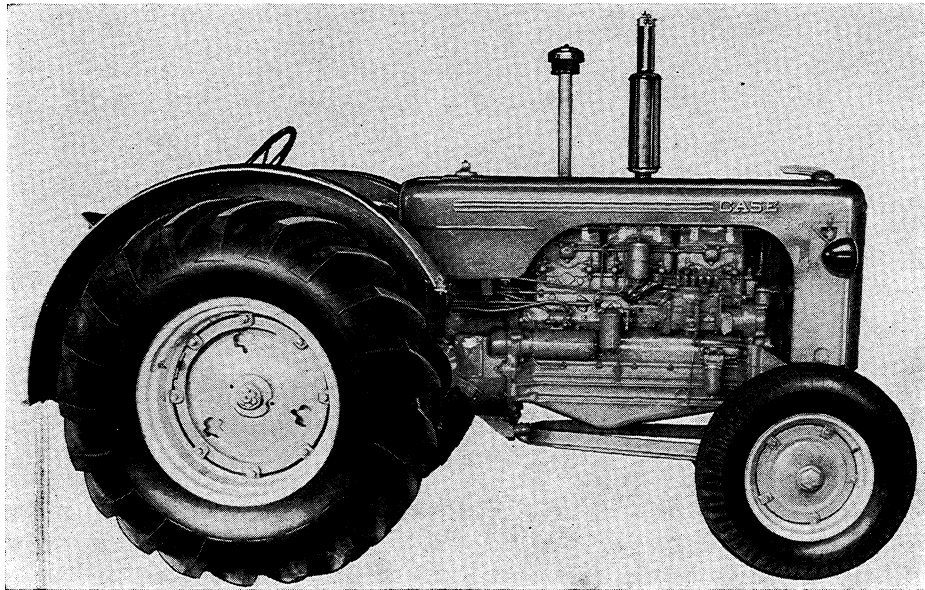


Figure 1. Model 500 Diesel Tractor Right Hand Side Showing Fuel Filters and Fuel Injection System

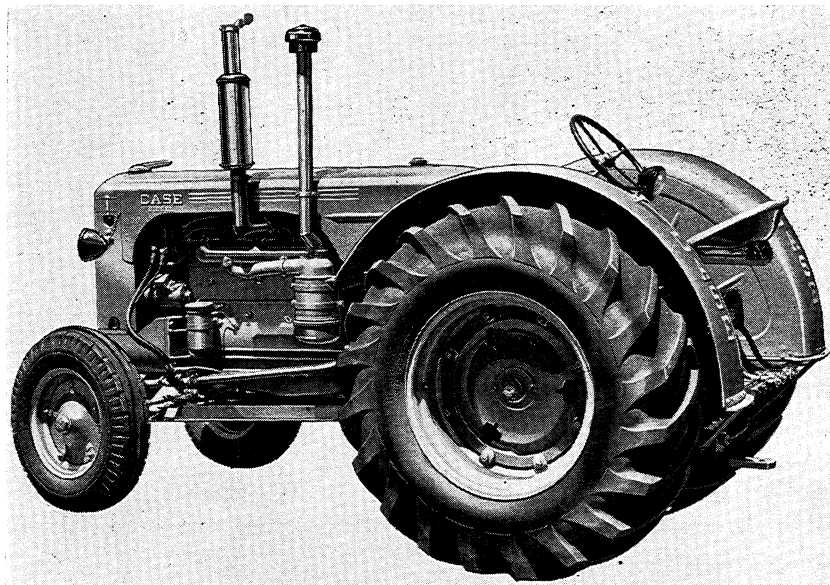


Figure 2. Model 500 Diesel Tractor Left Hand Side Showing Power Steering

## INTRODUCTION



The Case Model 500 Diesel Tractor is powered by a rugged six cylinder full diesel engine that is noted for its quiet operating characteristics and economy of operation.

Advanced engineering includes the **CASE POWRCEL** combustion system which produces all of the available power out of each charge of injected fuel. To protect the closely fitted precision parts, the finest filters available have been provided to clean the fuel, the intake air and the crankcase oil.

The four basic rules of Diesel Engine operation, which are the deciding factors in determining the service life and economy of operation that you will receive from your tractor, are as follows:

### 1. CLEAN FUEL

- (a) Use only Number 2 Diesel Fuel that meets the specifications listed in this manual.
- (b) Follow the instructions regarding the recommended precautions when handling and storing fuel.

### 2. AIR CLEANER

Service the air cleaner regularly.

### 3. CRANKCASE OIL

Diesel Engines require the use of a heavy duty engine oil. Select oil that meets the proper service designations recommended in the lubrication section of this manual.

#### 4. PERIODIC CHECKUPS

Your authorized Case Dealer has the service knowledge necessary to keep your tractor in top running condition.

Arrange to have him check your tractor at regular intervals.

**NOTE:** The terms "Right Hand" and "Left Hand" whenever used in this manual apply to the tractor when facing in the direction the tractor will move in forward operation.

### SERIAL NUMBER

When ordering parts from your Authorized Case Dealer and in all contacts or correspondence with your dealer relative to the tractor, always specify the Serial Number and Model of your tractor.

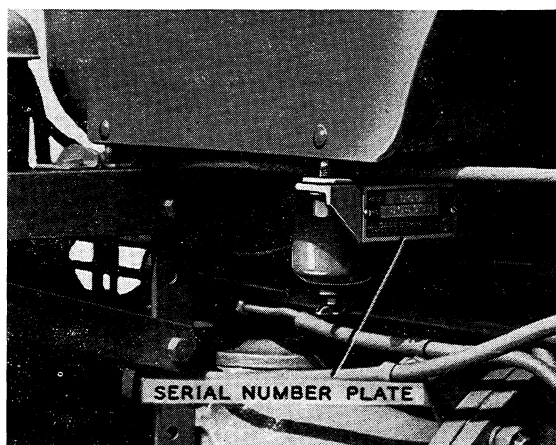


Figure 3

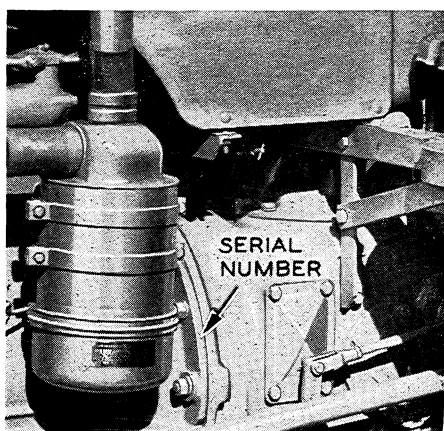


Figure 4

The serial number is stamped on the number plate located near the fuel tank water trap, Figure 3, and on the left rear side of the engine block near the air cleaner, Figure 4.

For reference, fill in the Serial number of your Model 500 Diesel Tractor in the space provided here.

*Serial No.*.....

## **PREVENT ACCIDENTS**

**When operating tractors or self-propelled farm machines, or when trailing a farm machine or implement over a public thoroughfare after dark — —**

- 1. Be sure the unit is equipped with headlights and that they are adjusted for highway use.**
- 2. Place suitable red lights and reflectors on the rear and sides of the unit so that its outline is well defined.**
- 3. COMPLY WITH YOUR STATE AND LOCAL LAWS GOVERNING LIGHTING REGULATIONS AND MAXIMUM WIDTH REGULATIONS.**



**Buy Now**



Our support email:

[ebooklibonline@outlook.com](mailto:ebooklibonline@outlook.com)