

Spark Ignition 400 Series Tractor

Operators Manual

5689

Reprinted








THIS SAFETY ALERT SYMBOL INDICATES IMPORTANT SAFETY MESSAGES IN THIS MANUAL. WHEN YOU SEE THIS SYMBOL, CAREFULLY READ THE MESSAGE THAT FOLLOWS AND BE ALERT TO THE POSSIBILITY OF PERSONAL INJURY OR DEATH.

M171B

If Safety Decals on this machine use the words **Danger, Warning or Caution**, which are defined as follows:

- **DANGER:** Indicates an immediate hazardous situation which if not avoided, will result in death or serious injury. The color associated with Danger is RED.
- **WARNING:** Indicates an potentially hazardous situation which if not avoided, will result in serious injury. The color associated with Warning is ORANGE.
- **CAUTION:** Indicates an potentially hazardous situation which if not avoided, may result in minor or moderate injury. It may also be used to alert against unsafe practices. The color associated with Caution is YELLOW.

If Safety Decals on this machine are ISO two panel Pictorial, decals are defined as follows:

- The first panel indicates the nature of the hazard.
- The second panel indicates the appropriate avoidance of the hazard.
- Background color is YELLOW.
- Prohibition symbols such as   and  if used, are RED.



WARNING

IMPROPER OPERATION OF THIS MACHINE CAN CAUSE INJURY OR DEATH. BEFORE USING THIS MACHINE, MAKE CERTAIN THAT EVERY OPERATOR:

- Is instructed in safe and proper use of the machine.
- Reads and understands the Manual(s) pertaining to the machine.
- Reads and understands ALL Safety Decals on the machine.
- Clears the area of other persons.
- Learns and practices safe use of machine controls in a safe, clear area before operating this machine on a job site.

It is your responsibility to observe pertinent laws and regulations and follow Case Corporation instructions on machine operation and maintenance.

Operator's Instruction Manual

CASE



400 SERIES TRACTORS

Spark Ignition

Gasoline - Low Cost Fuel - LP Gas

Third Edition

J. I. Case Co.

RACINE, WISCONSIN - U. S. A.



NOTICE!

At the time your Case Dealer delivers your new tractor, he will acquaint you with its operation and maintenance as outlined in the "Dealer's Delivery Service Report". When your Dealer has completed these instructions, he will ask you to sign the report and will then hand you the yellow copy for your records.

NOTE: The "Dealer's Delivery Service Report" also contains a record of the Pre-Delivery Checkup which your Dealer made on your tractor.

AFTER DELIVERY CHECKUP

The Authorized Case Dealer from whom you purchased your new tractor will perform the "After Delivery Checkup" outlined on the following page, if you will arrange to bring your tractor to his Service Shop within - - -

60 days after date of delivery or 200 hours of operation (whichever occurs first).

NOTE: The only charge your dealer will make for this inspection will be for oil, filters or other accessories.

TO PURCHASERS OF CASE TRACTORS

Congratulations on your purchase of a Case Tractor and welcome to the ever-increasing number of satisfied Case Owners.

The dependability and economical performance of your new Case Tractor will prove that you were wise in making this choice.

The organization back of your tractor has been building quality equipment for more than a century. Your Case Tractor was built in one of the largest and best equipped plants in the world. In this factory quality materials, precision machinery, high grade workmanship, thorough inspection, and complete testing equipment are combined to give you the best in performance and economical operation.

The care which you give your tractor will have a great deal to do with the service and satisfaction you get from it. By observing the precautions and suggestions in this manual, your Case Tractor will serve you well for many years. Make this manual your guide. Should you need information not covered here, or should your tractor require special servicing, contact your Case Dealer. He has trained men who are kept informed on the best methods of servicing CASE Equipment in the field or in his shop.

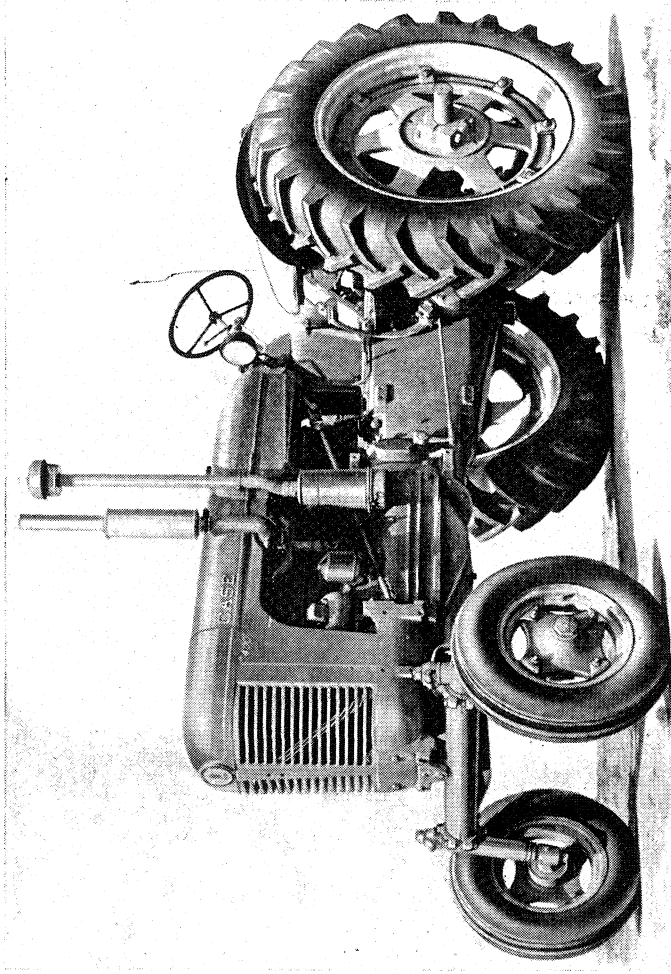
When it becomes necessary, after long use, to replace certain parts on your tractor, be sure to use only genuine Case Parts, insuring proper fit and continued good service. These may be obtained from your Case Dealer. It is always helpful to provide him with the Model and Serial Number of your tractor in addition to a description and part number, if available, of the parts required.

TABLE OF CONTENTS

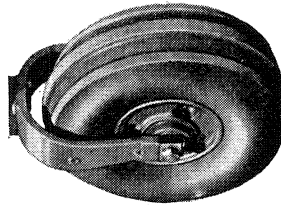
	Page
Serial Number.....	8
General Specifications.....	9 thru 26
Lubrication.....	27 thru 49
Pressure Fittings.....	30 thru 34
Engine Lubrication.....	37 thru 41
Transmission Lubrication.....	42 thru 44
Hydraulic Control System.....	45
Independent Power Take-off.....	47
Hydraulic Power Steering Attachment.....	48 and 49
Operating Instructions.....	51 thru 111
Run-In Procedure.....	52
Operating Controls and Instrument Guide.....	54 and 55
Engine Starting Procedure.....	58
Stopping Engine.....	59
Cold Weather Operation.....	60
Case Powr-range Transmission.....	62 and 63
Rear Tire Sizes.....	65
Rear Wheel and Front End Weights.....	66
Drawbar.....	67 thru 69
Belt Pulley.....	70 thru 72
Independent Power Take-Off.....	73 thru 76
Constant Hydraulic Control Operation.....	77 thru 88
Rear Wheel Tread Spacings.....	89 thru 97
Front Wheel Tread Spacings.....	98 thru 103
Fuels and Fuel Storage.....	104 and 105
Low Cost Fuel Equipped Tractors.....	106 and 107
Implement Warning Lamp.....	108
Important Checks During Operation.....	110 and 111
Service Suggestions.....	114 thru 123
Preventive Maintenance.....	125 thru 171
Cooling System.....	127 thru 134
Air Cleaner.....	135 thru 137
Crankcase Breather.....	138
Transmission Breather.....	138
Fuel System.....	139 thru 141
Starting and Lighting Equipment.....	142 thru 158
Governor and Engine Speed.....	159
Steering Gear.....	159
Transmission.....	159
Valve Tappet Clearance.....	160 and 161
Traction Clutch Adjustment.....	162 thru 164
Adjusting Power Take-off Clutch.....	166
Differential Brake.....	165
Repacking and Adjusting Front Wheel Bearing.....	167 thru 169
Tractor Storage.....	170 and 171
LP Gas Equipment.....	173 thru 187

**MODEL 411
GENERAL
PURPOSE
TRACTOR**

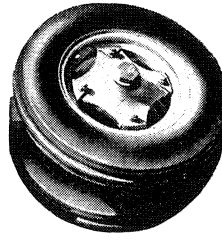
3 *Tractors In* **1**



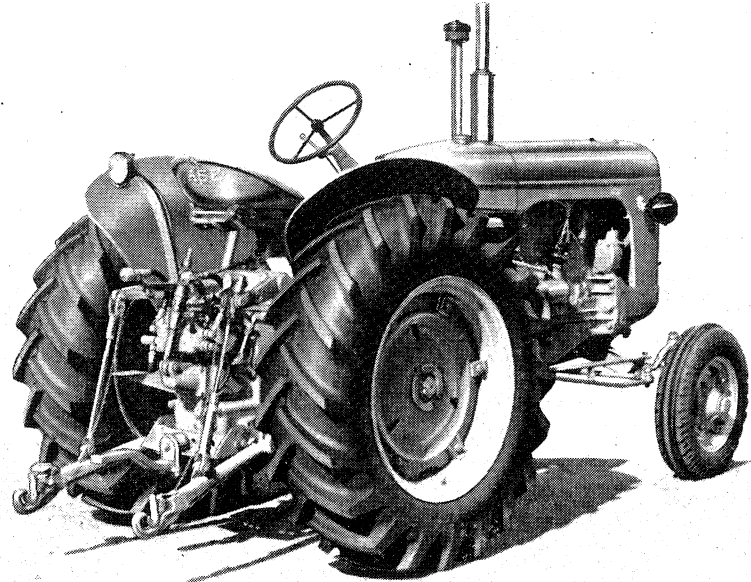
Adjustable
Front Axle
Attachment



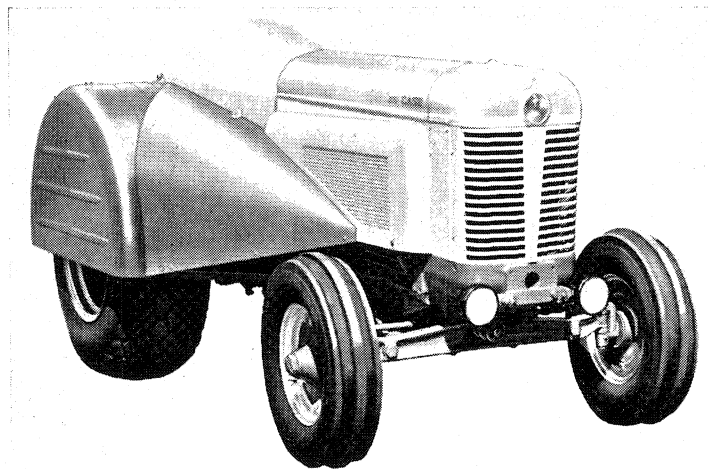
Single
Front
Wheel
Attachment



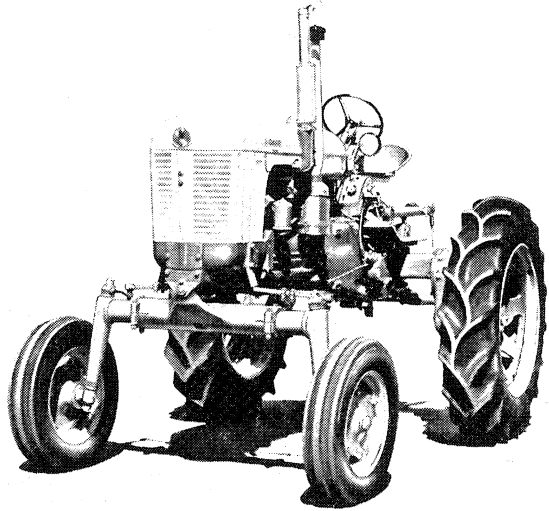
Dual
Front
Wheel
Attachment



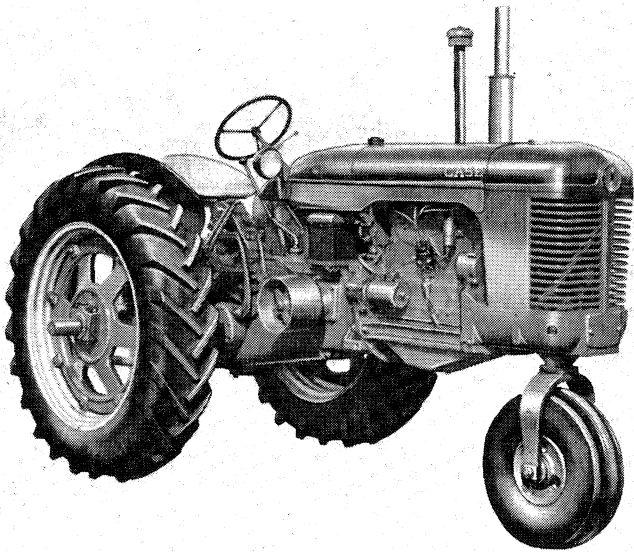
Model 410 Standard 4 Wheel Tractor Equipped With Eagle Hitch



Model 412 Orchard Grove Tractor

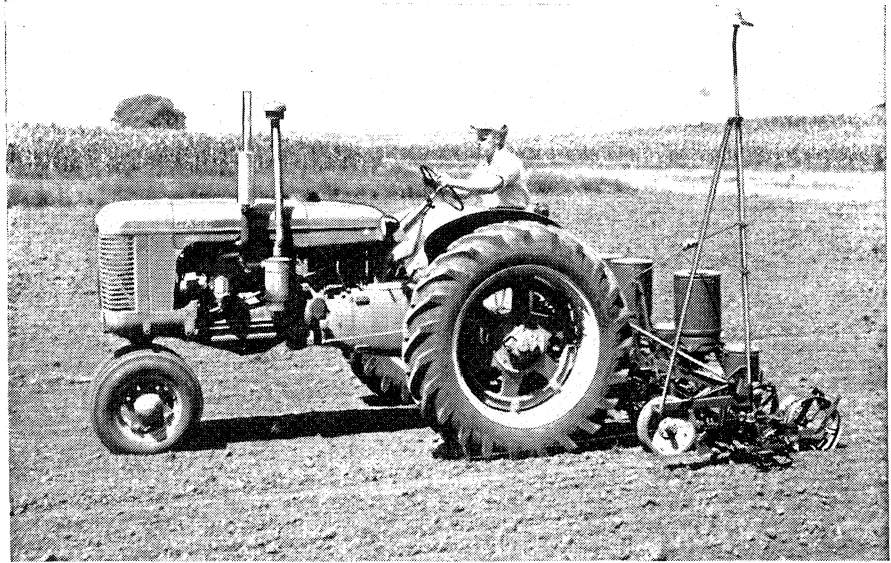


400 Series High Clearance Tractor



Model 411 General Purpose Tractor (Single Front Wheel)

INTRODUCTION



Model 411 General Purpose Tractor (Dual Front End)

The Case 400 Series Tractor is powered by a rugged four cylinder spark ignition engine which features heavy duty precision type construction usually found only in diesel engines. This engine is noted for its quiet operating characteristics and economy of operation.

Advanced engineering also includes the following outstanding features on the 400 Series Tractors.

Powr-range Transmission

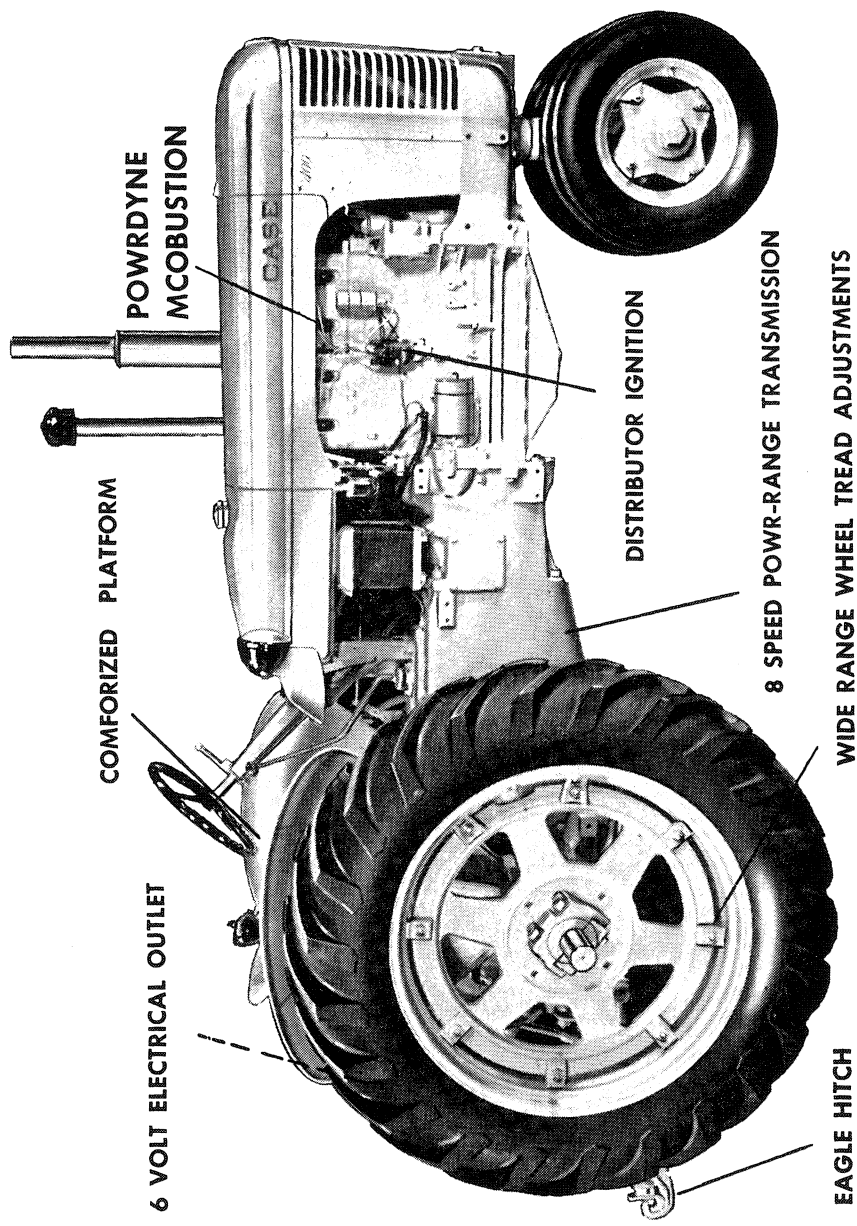
The Case Powr-range transmission, 8 speeds forward and 2 reverse, provides a working speed for every job on the farm in any type or condition of soil. The high speed (8th) road gear brings your fields closer to the farm yard in terms of non-productive time spent on the road.

“Comforized” Platform

The “Comfort Seat” easily accessible operating controls, lighted EZ-Read instruments; all features designed with the operator’s comfort in mind are standard equipment on Case 400 Series Tractors.

Wide Range of Easily Adjustable Wheel Spacings

Both front and rear wheel treads can be adjusted on all 400 Series Tractors for the various row spacings in a matter of minutes. One man can easily move the tire and rim to any of the tread positions.



6 VOLT ELECTRICAL OUTLET

COMFORIZED PLATFORM

POWRDYNE
MCOBUSTION

DISTRIBUTOR IGNITION

8 SPEED POWR-RANGE TRANSMISSION

WIDE RANGE WHEEL TREAD ADJUSTMENTS

EAGLE HITCH

SERIAL NUMBER

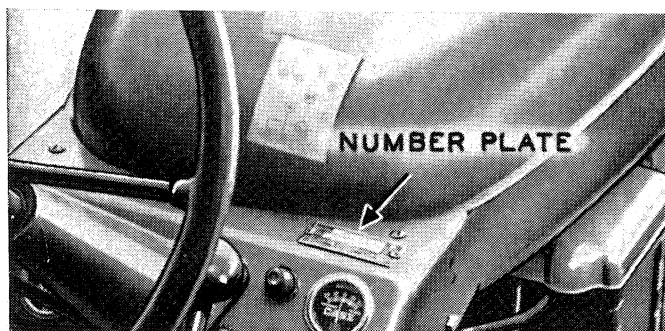


Figure 1

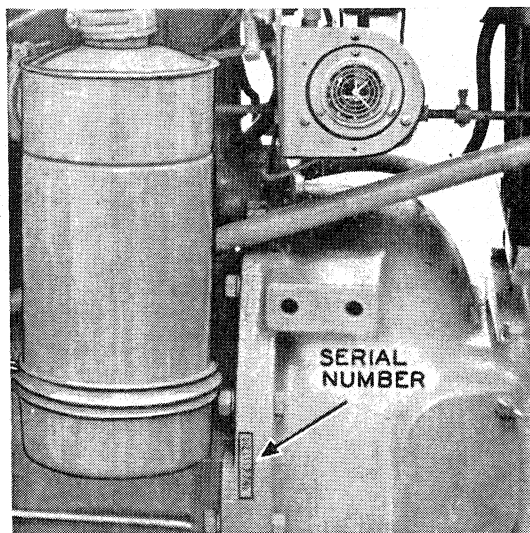


Figure 2

When ordering parts from your Authorized Case Dealer and in all contacts or correspondence with your dealer relative to the tractor, always specify the Serial Number and Model of your tractor.

The model and serial number are stamped on the number plate located on the instrument panel Figure 1. The serial number is also stamped on the left rear side of the engine block near the air cleaner, Figure 2.

For reference, fill in the Serial number and Model of your 400 Series Tractor in the space provided below.

Model No.....

Serial No.....

Buy Now



Our support email:

ebooklibonline@outlook.com