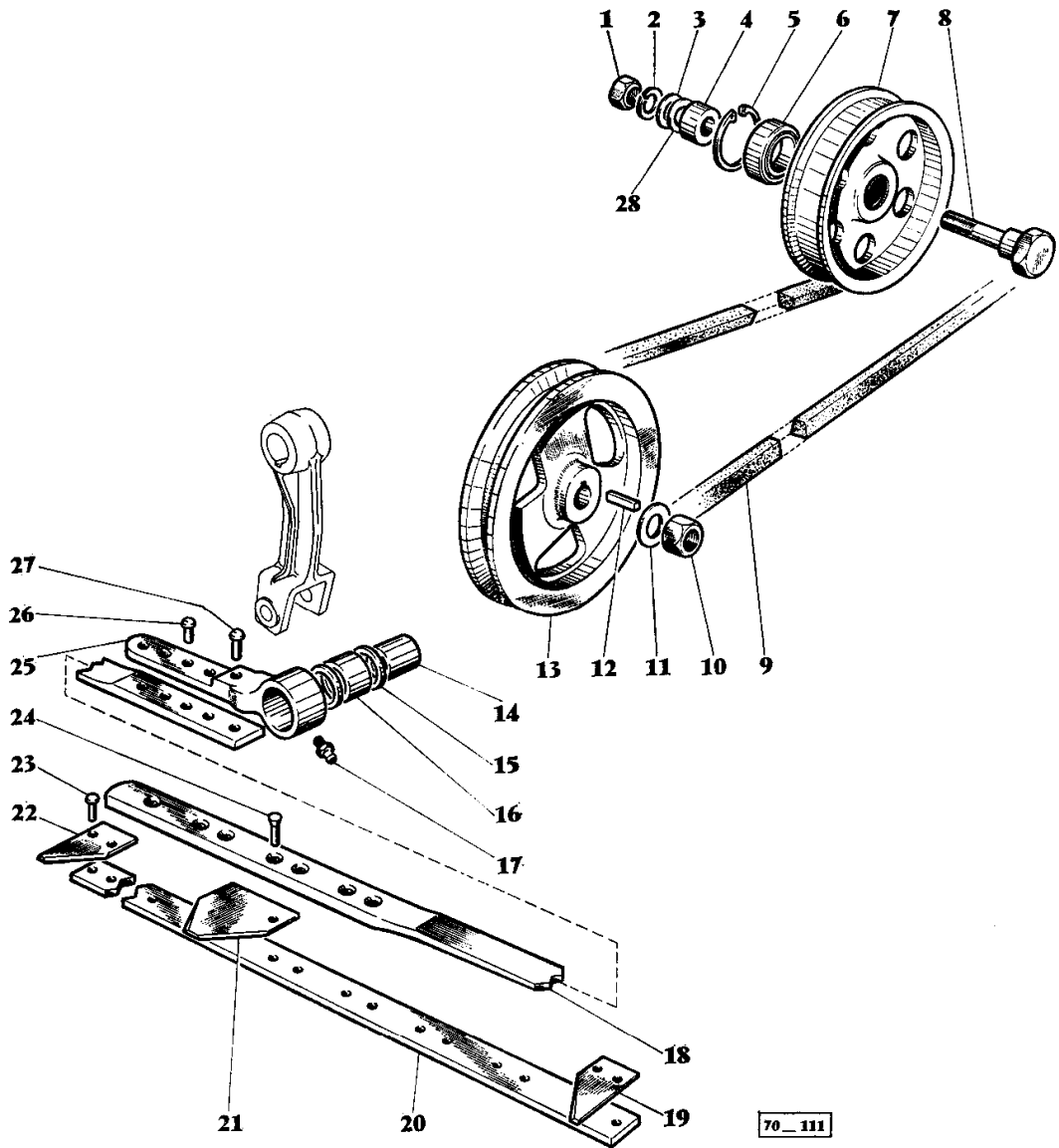


Page Title	Page Number
KNIFE AND DRIVE ARRANGEMENT	3
DRIVE ARRANGEMENT	4
REAR SHAFT - VARIATOR - REAR SHAFT - VARIATOR	7
.	8
VARIATOR MOVING BACK TO ZERO - VARIATOR	11
REEL ARM	12
REEL ARM	13C
PICK UP REEL	15
TABLE AUGER SHAFT DRIVE	19
TABLE AUGER	20
TABLES	24
GUARD ASSEMBLIES TABLE	31
GUARD REAR SHAFT	32
DIVIDERS	35
FLOATING EXTENSION	37B
TABLE WITH AUTOMATIC HEIGHT CONTROL	39
TABLE ELEVATOR HOUSING	40
ELEVATOR TO CYLINDER - TOP SHAFT	44
ELEVATOR TO CYLINDER - LOWER SHAFT	47
ANTIWIND KIT	48
TABLE THROW OUT CLUTCH	51
CYLINDER HOUSING	52
CLUTCH AND COUNTER - SHAFT	56
LUBRICATING ASSY	60
CYLINDER DRIVE AND CONTROL	63
CYLINDER DRIVE GEARBOX	64
CYLINDER	68
CONCAVE FIXED RODS AND DRUM DEFLECTOR	71
CONCAVE ASSEMBLY REMOVABLE RODS	75
CONCAVE CONTROL	76
GRAIN PAN	79
SHAKER SHOE	83
CLEANING FAN	87
SCREEN KIT CLEANING FAN	91
AUGERS, GRAIN AND RETURN	92
RETURN ELEVATOR	96
STRAW WALKERS AND GRAIN PANS	100
FRAME - FRONT AXLE AND WHEELS	104
REAR HOOD	108
GRAIN ELEVATOR	111
GRAIN TANK	115
UNLOADER DRIVE AND CONTROLS	119
UNLOADING AUGERS	120
UNLOADING AUGERS EXTENSION	124
COOLING AIR INTAKE	127
RADIATOR AND FAN	131
FUEL TANK AND TUBES	132
MANIFOLDS AND AIR FILTER	136
AIR FILTER AND PRE-FILTER (ITALY)	139
ELECTRIC WIRING AND BATTERY	140
ENGINE POWER OUT PUT SHAFT - DIESEL	144
VARIABLE SPEED PULLEYS	147
TRACTION CLUTCH	148
GEAR SHIFT LEVERS	152
GEAR BOX AND DIFFERENTIAL	156
FINAL DRIVE	160
BRAKES	163
BRAKE FLUID CONTAINER	164
BRAKE CYLINDER	167
BRAKE PEDALS	168
OPERATOR'S PLATFORM	172
SEAT	176
CONTROL BOX	179
CONTROL BOX FOR AUTOMATIC TABLE HEIGHT CONTROL	183
INSTRUMENT PANEL	187
WIRING ALARM - FUEL PUMP AND GAUGE	188

TABLE OF CONTENT

STEERING GEAR	191
STEERING GEAR	195
POWER STEERING LINKAGE	196
FRONT AXLE AND FINAL DRIVE	199
REAR AXLE AND WHEELS	203
PUMP BRACKET - PULLEY	207
HYDRAULIC PUMP	208
FOUR SPOOL UNI - BODY VALVE	211
HYDRAULIC OIL TANK AND VALVE	212
HYDRAULIC - TABLE, VARIATOR, STEERING	215
HYDRAULIC - POWER STEERING	220
HYDRAULIC TO TABLE	223
HYDRAULIC ON TABLE	227
HYDRAULIC - SPOUT UNLOADER	232
HYDRAULIC VALVE - CYLINDER - UNLOADER SPOUT	236
RAMS - TABLE LIFT	239
HYDRAULIC ACCUMULATORS	240
RAMS	243
LIGHTING EQUIPMENT	244
LIGHTING EQUIPMENT EXPORT	255
LIGHTING EQUIPMENT - CORN HEAD 33/43	259
BELTS	260
CHAINS	263
CONVEYORS	267
TRANSFER AND PLATES	268
STRAW SPREADER	272
AUGER AND SLIP CLUTCH - CASCADE SEPARATOR	276
CYLINDER AND DRIVES - CASCADE SEPARATOR	280
GRAIN ELEVATOR - CASCADE SEPARATION	284
MISCELLANEOUS TOOLS	288

LAME ET COMMANDE DE LAME
KNIFE AND DRIVE ARRANGEMENT



Imprimé en France
Printed in France

MOISSONNEUSE-BATTEUSE 510-8, 515-8
510-8, 515-8 COMBINE

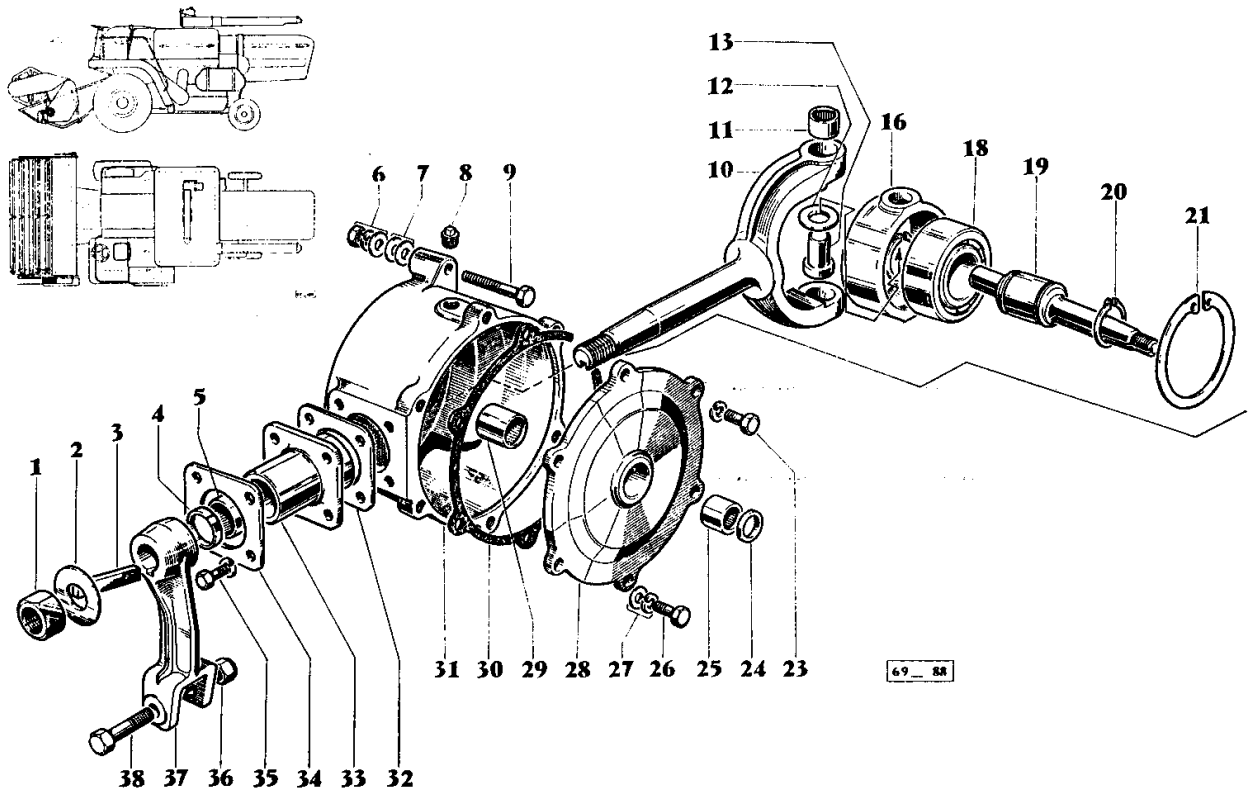
957 387 M2 - Emission 2 - VI/70
957 387 M2 - Issue 2 - VI/70

KNIFE AND DRIVE ARRANGEMENT

Item	Part Number	Qty	Description	Comments
1	353427X1	1	Nut Unf	
2	353433X1	1	Lock Washer	
3	353760X1	1	Flat Washers	
4	786039M2	1	Spacer	
5	208230M1	1	Ring	
6	22258X	1	Bearing Assy	
7	910086M1	1	Pulley	
8	227964M1	1	Bolt	Repairs and replaces 213736M1
9	785585M1	1	Belt	
10	353427X1	1	Nut Unf	
11	833196M1	1	Washer	
12	10721X	1	Key	
13	236258M2	1	Pulley	
14	239242M1	1	Roller	
15	831225M1	2	Seal	
16	833083M1	1	Bearing Needle	
17	13811X	1	Grease Nipple	
18	785583M1	1	Spring	(A)
19	647116M1	1	Section	Left Hand
20	785582M1	1	Stem	10'
	234660M1	1	Knife Back	12'
	234661M1	1	Knife Back	14'
21	206236M1	39	Section	10'
	206236M1	47	Section	12'
	206236M1	55	Section	14'
22	790863M1	1	Section	Right Hand
23	49598X	74	Rivet	10'
	49598X	90	Rivet	12'
	49598X	106	Rivet	14'
24	36493X	8	Rivet	Alternative
	10410X	8	Rivet	Alternative
25	785584M1	1	Head	(A)
	785572M91	1	Knife	10'
				INCL. REF. 14 - 27
	785574M91	1	Knife	12'
				INCL. REF. 14 - 27
	785576M91	1	Knife	14'
				INCL. REF. 14 - 27
26	29140X	4	Rivet	
27	29142X	1	Rivet	
28	353774X1	1	Washer	
				(A)
				FOR CHANGE ORDER 911695M91

4

COMMANDE DE LAME
DRIVE ARRANGEMENT



Imprimé en France
Printed in France

MOISSONNEUSE-BATTEUSE 510-8, 515-8
510-8, 515-8 COMBINE

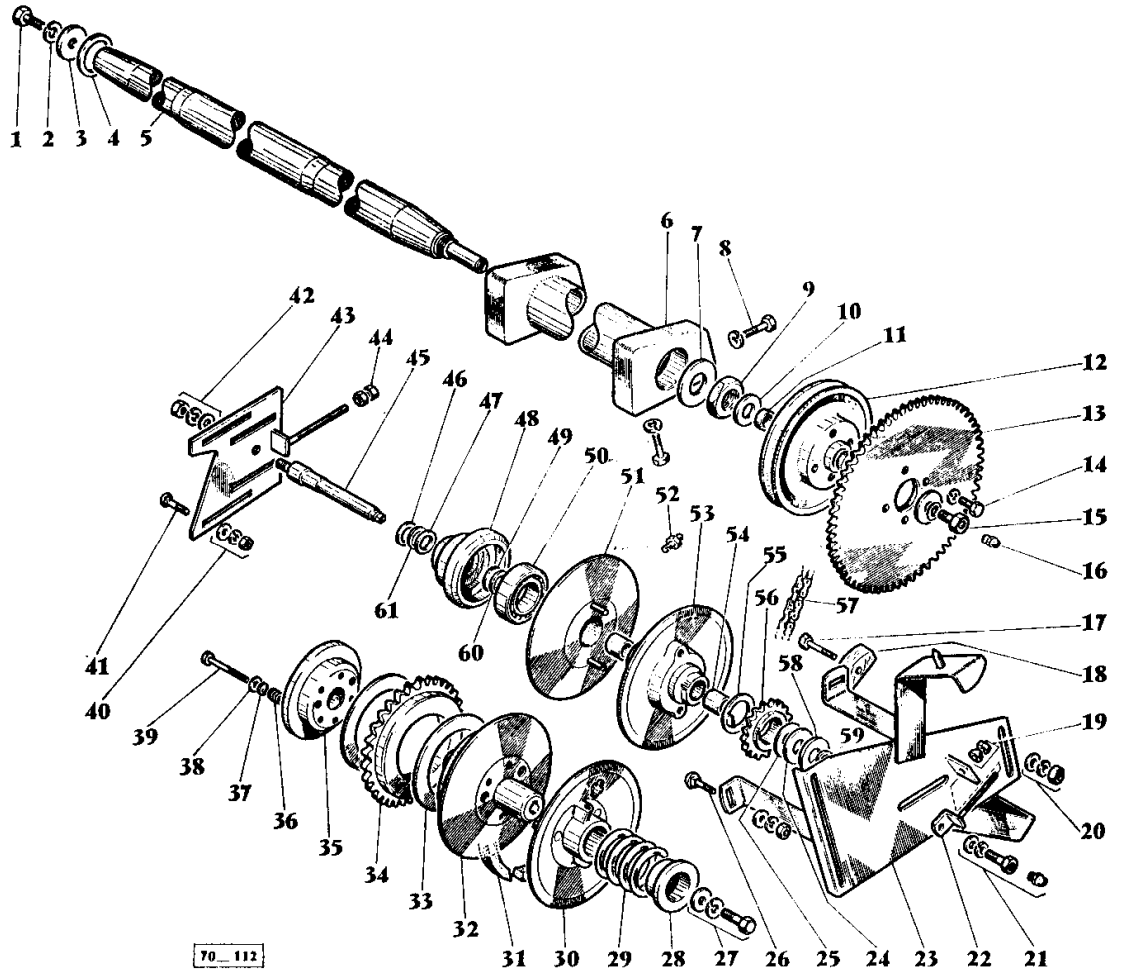
957 387 M2 - Emission 1 - VI/70
957 387 M2 - Issue 1 - VI/70

DRIVE ARRANGEMENT

Item	Part Number	Qty	Description	Comments
1	355646X1	1	Nut Unf	
2	239497M1	1	Washer	
3	49378X	1	Key	
4	831225M1	2	Seal	
5	831224M1	2	Needle	
6	353772X1	2	Washer	
	353432X1	2	Lock Washer	
	353426X1	2	Nut Unf	
7	353757X1	2	Washer	
	361096X1	2	Washer	
8	375181X1	2	Plug	
9	353569X1	2	Bolt Unf	
10	236569M2	1	Yoke	
11	832879M1	2	Bearing	
12	236584M1	2	Bearing	
13	239149M2	2	Pin	(B)
16	239865M1	1	Bearing	(A)
	239148M3	1	Bearing	(B)
18	833309M1	1	Bearing	
19	239598M2	1	Shaft	
20	364553X1	2	Ring	
21	366126X1	1	Circlip	(B)
23	353678X1	4	Screw Unc	
	353446X1	2	Lock Washer	
24	831135M1	2	Seal	
25	353243X1	1	Bearing Assy	
26	353679X1	2	Screw Unc	
27	353446X1	2	Lock Washer	
	353755X1	4	Washer	
28	236568M1	1	Cover	
29	831823M1	1	Bearing Assy	
30	236567M1	1	Gasket	
31	236566M1	1	Housing	INCL REF. 1, 2, 4, 5, 8, 10 - 33
	787910M92	1	Housing	
32	236579M1	1	Gasket	
33	787483M1	1	Housing	
34	785613M1	2	Spacer	
35	362484X1	4	Screw	
	353432X1	4	Lock Washer	
36	376449X1	1	Nut Unf	
37	239160M2	1	Arm	
38	238499M1	1	Bolt	

(A)
 Up to Serial or Engine Number 18095
 TABLE 10'
 Up to Serial or Engine Number 19502
 TABLE 12'
 Up to Serial or Engine Number 22153
 TABLE 14'
 Not serviced, order 911874M91
 (B)
 From Serial or Engine Number 18096, 18106, 18108,
 180110
 TABLE 10'
 From Serial or Engine Number 19503, 19505, 19507
 TO 19511, 19513 TO
 19555, 19557
 TABLE 12'
 From Serial or Engine Number 22154
 TABLE 14'

ARBRE AR. DE RABATTEUR - VARIATEUR
 REAR SHAFT - VARIATOR



Imprimé en France
 Printed in France

MOISSONNEUSE-BATTEUSE 510-8, 515-8
 510-8, 515-8 COMBINE

957 387 M2 - Emission 2 - VI/70
 957 387 M2 - Issue 2 - VI/70

REAR SHAFT - VARIATOR - REAR SHAFT - VARIATOR

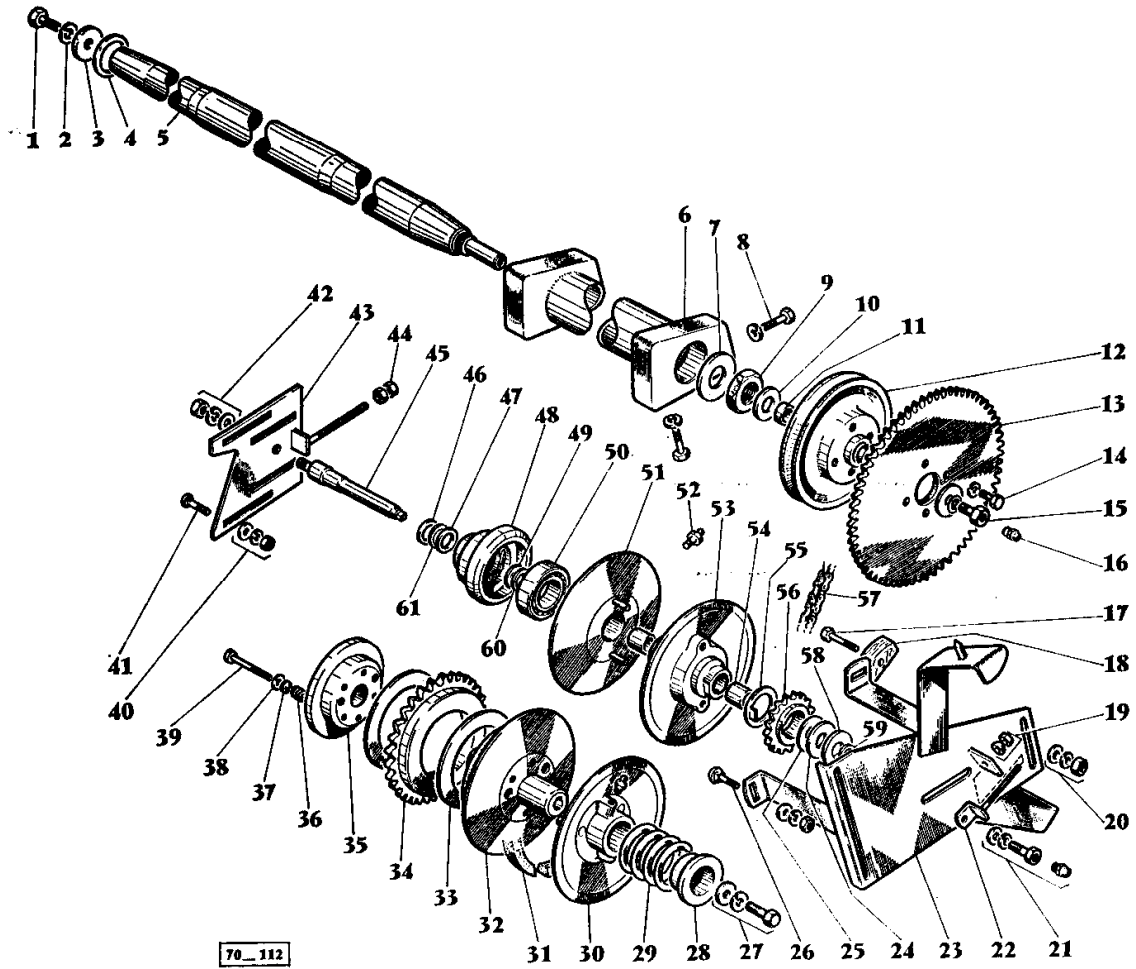
Item	Part Number	Qty	Description	Comments
REAR SHAFT - VARIATOR				
1	354751X1	1	Screw Unf	
2	353440X1	1	Lock Washer	
3	911887M1	1	Washer	
4	785897M1	1	Spacer	
5	911729M91	1	Shaft	(A) 10'
	911730M91	1	Shaft	(B) 12'
	911731M91	1	Shaft	(C) 14'
	911884M92	1	Shaft	(D) 10'
	911884M92	1	Shaft	(E) 12'
	911886M92	1	Shaft	(E) 14'
6	785911M1	2	Bearing	
7	911536M1	1	Washer	
8	353519X1	12	Screw Unf	
	353446X1	12	Lock Washer	
	355618X1	10	Washer	
9	911537M1	1	Nut	
10	785900M1	1	Washer	
11	785752M1	2	Bearing	
12	789197M91	1	Pulley	INCL. REF. 11
13	785901M1	1	Sprocket	Number of teeth/spines 40
	787398M1	1	Sprocket	Number of teeth/spines 35
	785902M1	1	Sprocket	Number of teeth/spines 69
14	353691X1	4	Screw Unc	
	353434X1	4	Lock Washer	
15	791122M1	1	Bolt	Repairs and replaces 354746X1
	359405X1	1	Washer	
	786446M1	1	Washer	
16	13811X	1	Grease Nipple	
17	353544X1	1	Screw Unf	Repairs and replaces 353543X1
18	785844M1	1	Tightener	
19	787075M1	1	Washer	
	375109X1	1	Nut Unc	
20	353756X1	1	Washer	
	353434X1	1	Lock Washer	
	353430X1	1	Nut Unf	
21	783707M1	1	Screw	Repairs and replaces 353595X1
	353439X1	1	Lock Washer	
	783708M1	1	Washer	Repairs and replaces 353758X1
22	787071M91	1	Bracket	(G)
	783700M91	1	Bracket	(H)
23	913519M92	1	Support	(G)
	913864M91	1	Bearer	(H)
24	787594M1	1	Washer	
25	787595M1	1	Washer	
26	353794X1	2	Bolt Unf	
	353755X1	2	Washer	
	353446X1	2	Lock Washer	
	353916X1	2	Nut Unf	
27	353614X1	1	Screw Unf	Repairs and replaces 353612X1
	353760X1	1	Flat Washers	
	353433X1	1	Lock Washer	
28	788706M2	1	Flange	
29	913455M1	1	Spring	Repairs and replaces 786241M1
	913456M1	1	Spring	Repairs and replaces 788705M1
30	785894M94	1	Pulley	
	13811X	1	Grease Nipple	
31	789853M1	1	Belt	Repairs and replaces 785806M1
32	785893M3	1	Pulley	
33	790844M2	2	Washer	
34	785890M1	1	Sprocket	Number of teeth/spines 41
	786147M1	1	Sprocket	Number of teeth/spines 49
35	794504M91	1	Disc	
36	215873M1	5	Spring	

REAR SHAFT - VARIATOR - REAR SHAFT - VARIATOR

Item	Part Number	Qty	Description	Comments
37	790845M1	5	Guide	
38	353756X1	5	Washer	
39	911508M1	5	Screw	
40	353755X1	4	Washer	
	353916X1	4	Nut Unf	
	353446X1	4	Lock Washer	
41	353794X1	4	Bolt Unf	
42	353776X1	1	Washer	
	353442X1	1	Washer	
	353920X1	1	Nut Unf	
43	785852M91	1	Plate	
44	375109X1	2	Nut Unc	
45	785797M1	1	Shaft	(G)
	783684M1	1	Shaft	(H)
46	785886M1	1	Seal	
47	359306X1	1	O Ring	
48	785889M1	1	Housing	(G)
	782630M1	1	Housing	(H)
49	359300M1	1	O Ring	Repairs and replaces 359302X1
50	785885M1	1	Bearing	
51	911648M94	1	Pulley	INCL. 789446M1
	789446M1	2	Retainer	Repairs and replaces 785883M2
52	13811X	1	Grease Nipple	
53	785735M92	1	Pulley	(G)
				INCL. REF. 54
	783852M91	1	Pulley	(H)
				INCL. REF. 54
54	785907M1	2	Bush	
55	785733M1	1	Washer	(G)
	789227M1	1	Washer	(H)
56	785732M1	1	Sprocket	(G)
				Number of teeth/spines 13
	789228M1	1	Sprocket	(H)
				Number of teeth/spines 15
57	785843M91	1	Chain	
58	783800M1	1	Bearing Assy	
59	783801M1	1	Washer	
60	195920M1	1	Washer	
61	361171X1	1	Washer	
				(A)
				Up to Serial or Engine Number 18203
				Not serviced, order 911889M91
				(B)
				Up to Serial or Engine Number 20418
				Not serviced, order 911890M91
				(C)
				Up to Serial or Engine Number 22323
				Not serviced, order 911891M91
				(D)
				From Serial or Engine Number 18204
				(E)
				From Serial or Engine Number 20419
				(F)
				From Serial or Engine Number 22324
				(G)
				Up to Serial or Engine Number
				(H)
				From Serial or Engine Number

8

ARBRE AR. DE RABATTEUR - VARIATEUR
REAR SHAFT - VARIATOR



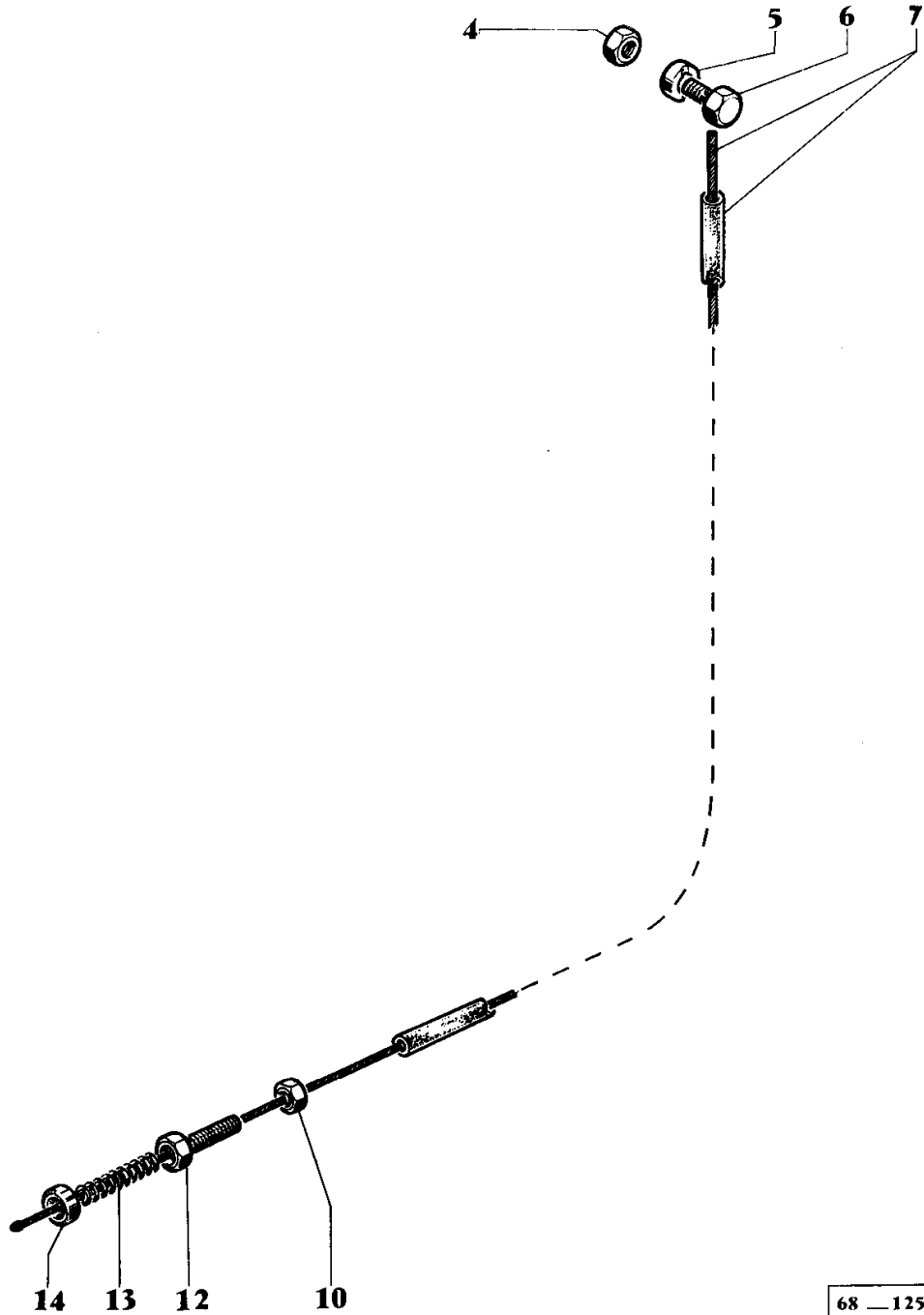
Imprimé en France
Printed in France

MOISSONNEUSE-BATTEUSE 510-8, 515-8
510-8, 515-8 COMBINE

957 387 M2 - Emission 2 - VI/70
957 387 M2 - Issue 2 - VI/70

Description

RETOUR A ZERO DU VARIATEUR
VARIATOR MOVING BACK TO ZERO



68 — 125

Imprimé en France
Printed in France

MOISSONNEUSE-BATTEUSE 510-8
510-8 COMBINE

957 387 M2 - Emission 1 - V/69
957 387 M2 - Issue 1 - V/69

MASSEY FERGUSON**MF 510/515 COMBINES, |-> (FR) - 957387****957387****VARIATOR MOVING BACK TO ZERO - VARIATOR****11**

Item	Part Number	Qty	Description	Comments
				VARIATOR
4	353431X1	1	Nut Unf	
5	911185M1	1	Washer	
6	911156M2	1	Bolt	
7	911167M92	1	Cable	
10	353431X1	1	Nut Unf	
12	911160M1	1	Bolt	
13	911162M2	1	Spring	
14	911507M1	1	Retainer	Alternative 911159M1
	911159M1	1	Cup	

Buy Now



Our support email:

ebooklibonline@outlook.com