

OPERATOR'S MANUAL

WOOD CHIPPER

WC1105



FRONTIER

5PQ990102 (10/08/2014)

To the Owner;

Thank-You for choosing a quality product from Frontier Equipment. We strive to give you the best equipment and the best level of service of any company. With a little care and maintenance this machine will do your work for you for many years. In this manual, we make an effort to get you better acquainted with the machine so you can achieve maximum performance. We design and build all of our equipment with the end user in mind so we welcome any suggestions or ideas for improvement. Please note that it is within our rights to make changes or improvements to our equipment without updating the equipment that was manufactured before the change took place.

Please take a few minutes to fill out the area below. This information will be valuable to you when ordering parts or requesting service from your dealer.

Dealer Name: _____

Dealer Phone Number: _____

Service Manager/Technician: _____

Model# and Description: _____

Serial Number: _____

Date of Purchase: _____

TABLE OF CONTENTS

Introduction	3
Intended Use	3
Serial Number	3
Specifications	3
Safety	4
Driveline Safety.....	5
Safety Decals	6
Inspection and Set-up	7
Operation	8
Startup	8
Chipping Tips	8
Chip Chute Adjustments	9
Deflector	9
Maintenance & Service	10
Belt Tension	10
Replacing the Belts	10
Knives	11
Anvil	11
Lubrication	12
Bearings	12
Warranty	13
Illustrated Parts Breakdown	14
Base Assembly Parts	15
Main Assembly Parts	16
Decals & Labels	18
Notes	19

INTRODUCTION

Intended Use

Frontier Chippers are designed to chip natural, untreated wood only. Materials that are processed may contain chemicals or by-products that could corrode the machine, damage the blades, or spontaneously combust. Frontier Equipment will not cover under warranty any chipper that has been used for anything besides natural wood.

Serial Number

The chipper's serial number is located on the inside of the base. This number helps us to track changes and improvements and must be mentioned when ordering parts or requesting service. For your convenience, a space has been provided inside the front cover of this manual to record the serial number, model number, purchase date, and dealer name.

Specifications



Specifications	WC1103	WC1105	WC1205
Chip Opening	3 x 5.5 in. (7.5 x 14cm)	5.5 x 8 in. (14 x 20cm)	
Drive System	PTO		PTO
Engine	N/A		N/A
Transport	3 Point Hitch		3 Point Hitch
HP Required	16	35+	
Rotor Size	65 lbs.	165 lbs.	
Knives	(2) 2.5 x 3.25 x 5/16 in.	(4) 2.5 x 3.25 x 5/16 in.	
Knife Bolts	3/8" Recessed Head Hardened Bolts		
Feed System	Manual		Hydraulic
Hydraulic Requirement	N/A		6 GPM
Feed Roller	N/A		15" (37.5cm)
Hopper Opening	25 x 18 in. (62.5 x 45cm)	28 x 28 in. (70 x 70cm)	
Feed Height	38" (95cm)	41" (102.5cm)	21" (52.5cm)
Weight (lbs.)	375	650	775

SAFETY



Do not operate this machine until this manual has been read and fully understood; serious injury or death can occur if these safety warnings are ignored!



Never allow more than one person to operate this machine at one time. If two people are working together it will increase the chance of your workmate engaging the machine or causing you to fall into the machine.



Wood is much harder than human flesh! If your hand is ever near the chipping or feeding area serious injury can occur. NEVER place your hands on the machine while it is chipping.



Never place your hands or feet on or near the machine while it is engaged.



Never place your hands or feet on or near the material while it is feeding.



DO NOT wear loose clothing, jewelry, or anything that can catch a branch that is feeding into the chipper.



DO NOT stand directly in front of the infeed hopper when loading material into the hopper; always load from the side of the hopper. This will not allow any part of your body to be pulled into the machine.



Always wear safety hearing protection, eye wear, gloves, and long pants when operating the chipper.



Never place your hands beyond the opening of the hopper while the chipper is running.



Never allow children, disabled, or untrained persons to operate the chipper.



Do not operate the chipper near bystanders, public roads, or anywhere that the debris may travel far enough to injure another person.



Never move the chipper while it is running.



Shut off the tractor and allow the chipper to come to a complete stop before removing any debris.



Never perform any maintenance or repair while the chipper is running.

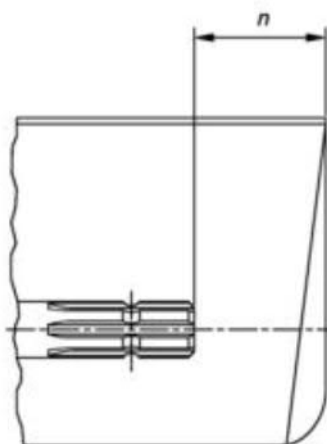


The SMV (Slow Moving Vehicle) Triangle must be visible at all times when traveling on public roads.

Stay Clear of Rotating Drivelines



TS1644-UN-22AUG95



H96219-UN-29APR10

Entanglement in rotating driveline can cause serious injury or death.

Keep tractor master shield and driveline shields in place at all times. Make sure rotating shields turn freely.

Wear close fitting clothing. Stop the engine and be sure that PTO driveline is stopped before making adjustments, connections, or cleaning out PTO driven equipment.

Do not install any adapter device between the tractor and the primary implement PTO drive shaft that will allow a 1000 rpm tractor shaft to power a 540 rpm implement at speeds higher than 540 rpm.

Do not install any adapter device that results in a portion of the rotating implement shaft, tractor shaft, or the adapter to be unguarded. The tractor master shield shall overlap the end of the splined shaft and the added adaptor device as outlined in the table.

PTO Type	Diameter	Splines	$n \pm 5 \text{ mm (0.20 in.)}$
1	35 mm (1.378 in.)	6	85 mm (3.35 in.)
2	35 mm (1.378 in.)	21	85 mm (3.35 in.)
3	45 mm (1.772 in.)	20	100 mm (4.00 in.)

Buy Now



Our support email:

ebooklibonline@outlook.com