

OPERATOR'S MANUAL

BOX BLADES

BB3272

BB3284

BB3296



FRONTIER
EQUIPMENT

TO THE DEALER:

Assembly and proper installation of this product is the responsibility of the Frontier dealer. Read manual instructions and safety rules. Make sure all items on the Dealer's Pre-Delivery and Delivery Check Lists in the Owner's/Operator's Manual are completed before releasing equipment to the owner.

The dealer must complete the Warranty Registration located on the Frontier website.

TO THE OWNER:

Read this manual before operating your Frontier equipment. The information presented will prepare you to do a better and safer job. Keep this manual handy for ready reference. Require all operators to read this manual carefully and become acquainted with all the adjustment and operating procedures before attempting to operate. Replacement manuals can be obtained from your selling dealer.

The equipment you have purchased has been carefully engineered and manufactured to provide dependable and satisfactory use. Like all mechanical products, it will require cleaning and upkeep. Lubricate the unit as specified. Observe all safety information in this manual and safety decals on the equipment.

For service, your authorized Frontier dealer has trained mechanics, genuine Frontier service parts, and the necessary tools and equipment to handle all your needs.

Use only genuine Frontier service parts. Substitute parts will void the warranty and may not meet standards required for safe and satisfactory operation. Record the model number and serial number of your equipment in the spaces provided:

Model: _____ Date of Purchase: _____

Serial Number: (see Safety Decal section for location) _____

Provide this information to your dealer to obtain correct repair parts.

Throughout this manual, the term **IMPORTANT** is used to indicate that failure to observe can cause damage to equipment. The terms **CAUTION**, **WARNING** and **DANGER** are used in conjunction with the Safety-Alert Symbol, (a triangle with an exclamation mark), to indicate the degree of hazard for items of personal safety.



This Safety-Alert Symbol indicates a hazard and means **ATTENTION! BECOME ALERT! YOUR SAFETY IS INVOLVED!**

DANGER

Indicates an imminently hazardous situation that, if not avoided, will result in death or serious injury.

WARNING

Indicates a potentially hazardous situation that, if not avoided, could result in death or serious injury, and includes hazards that are exposed when guards are removed.

CAUTION

Indicates a potentially hazardous situation that, if not avoided, may result in minor or moderate injury.

IMPORTANT NOTE

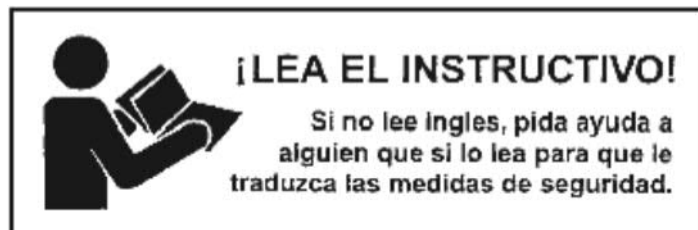
Indicates that failure to observe can cause damage to equipment.

Indicates helpful information.

Introduction ii

TABLE OF CONTENTS

INTRODUCTION	ii
SPECIFICATIONS / GENERAL INFORMATION	1
SAFETY DECALS	2 - 3
SAFETY RULES	4 - 6
DEALER INSTRUCTIONS	7
OPERATION	8 - 10
OWNER SERVICE	11 - 12
PARTS CATALOG	13 - 14
BOLT SIZE AND BOLT TORQUE CHART	15
NOTES	16



SPECIFICATIONS

	BB3272	BB3284	BB3296
3-Point Hitch	Category I and II Quick Hitch (iMatch Compatible)	Category I and II Quick Hitch (iMatch Compatible)	Category I and II Quick Hitch (iMatch Compatible)
Working Width	72"	84"	96"
Tractor HP (MAX)	80 HP	80 HP	80 HP
Shipping Weight	856 lbs.	970 lbs.	1086 lbs.
Approximate Operating Weight	816 lbs.	911 lbs.	1036 lbs.
Beam Type	Tubular Scarifier Beam	Tubular Scarifier Beam	Tubular Scarifier Beam
Scarifier Shanks	Notched Four Position	Notched Four Position	Notched Four Position
Points	Heat Treated Points	Heat Treated Points	Heat Treated Points
Capacity	21 cu. ft.	24.50 cu. ft.	28 cu. ft.
Cutting Edges	(2) 1/2" x 6' Reversible	(2) 1/2" x 6' Reversible	(2) 1/2" x 6' Reversible
Beam Size	4" x 4" x 3/8"	4" x 4" x 3/8"	4" x 4" x 3/8"
End Plate Thickness	1/2"	1/2"	1/2"
Height	20"	20"	20"
Depth	26 1/2"	26 1/2"	26 1/2"
Tailgate	Floating	Floating	Floating
Assembly Time	15 min.	15 min.	15 min.
Moldboard Thickness	1/4"	1/4"	1/4"

GENERAL INFORMATION

The purpose of this manual is to assist you in operating and maintaining your Box Blade. Read it carefully. It furnishes information and instructions that will help you achieve years of dependable performance.

These instructions have been compiled from field experience and engineering data. Some information may be general in nature, due to unknown and varying operating conditions. However, through experience and these instructions, you should be able to develop procedures suitable to your particular situation.

The illustrations and data used in this manual were current at the time of printing. However, due to possible inline production changes, your machine may vary slightly in detail. We reserve the right to redesign and change the machines as may be necessary without notification.

Throughout this manual, references are made to right and left direction. These are determined by standing behind the tractor facing the direction of forward travel.

1 Specifications

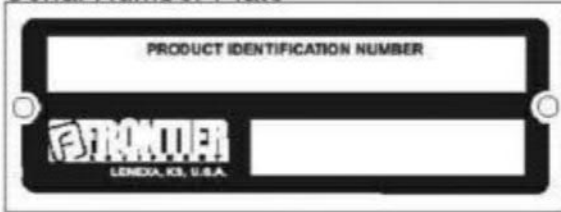
SAFETY & INSTRUCTIONAL DECALS

ATTENTION! BECOME ALERT! YOUR SAFETY IS INVOLVED!

FAILURE TO FOLLOW THESE INSTRUCTIONS COULD RESULT IN SERIOUS INJURY OR DEATH

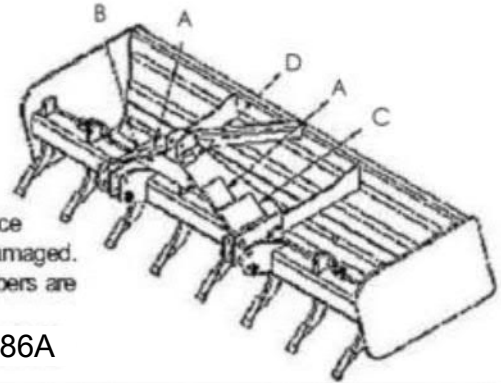
Replace Decals Immediately If Damaged!

D- Serial Number Plate



5TL15286B

Check that all safety decals are installed and in good condition. Replace if decals are worn or damaged. Replacement Part numbers are listed here.





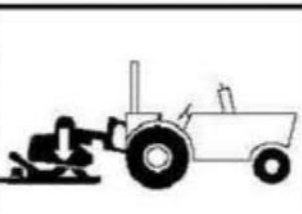
5TL15286A

 WARNING
<p>TO AVOID SERIOUS INJURY OR DEATH:</p> <ul style="list-style-type: none"> ■ Read Operator's Manual before operating, servicing or repairing equipment. Follow all safety rules and instructions. (Manuals are available from your selling dealer.) ■ Never allow riders. ■ Keep bystanders away from equipment during operation. ■ Operate from tractor seat only. ■ Keep all shields in place and in good condition. ■ Lower equipment to ground, stop engine, remove key and set brake before dismounting tractor. ■ Never allow children or untrained persons to operate equipment. ■ Do not transport towed or semi-mounted units over 20 MPH. <p>FAILURE TO FOLLOW THESE INSTRUCTIONS CAN RESULT IN INJURY OR DEATH.</p>

5TL15286C

 WARNING

<p>CRUSHING AND PINCHING HAZARD</p> <ul style="list-style-type: none"> ■ Be extremely careful handling various parts of the machine. They are heavy and hands, fingers, feet, and other body parts could be crushed or pinched between tractor and implement. ■ Operate tractor controls from tractor seat only. ■ Do not stand between tractor and implement when tractor is in gear. ■ Make sure parking brake is engaged before going between tractor and implement. ■ Stand clear of machine while in operation or when it is being raised or lowered. <p>FAILURE TO FOLLOW THESE INSTRUCTIONS COULD RESULT IN SERIOUS INJURY OR DEATH.</p> <p style="text-align: right;">TL15286</p>

 WARNING	
	<p>FALLING OFF CAN RESULT IN BEING RUN OVER.</p> <ul style="list-style-type: none"> ■ Tractor must be equipped with ROPS (or ROPS CAB) and seat belt. Keep foldable ROPS systems in "locked up" position at all times. ■ Buckle Up! Keep seat belt securely fastened. ■ Allow no riders.
	<p>RAISED IMPLEMENT CAN DROP AND CRUSH.</p> <ul style="list-style-type: none"> ■ Never go underneath raised implement which can drop from equipment or tractor 3-point hitch hydraulic leak down, hydraulic system failures, movement of control levers or mechanical linkage failures. ■ Service work does not require going underneath implement. Read manual instructions. <p>FALLING OFF OR GOING UNDERNEATH IMPLEMENT CAN RESULT IN SERIOUS INJURY OR DEATH.</p> <p style="text-align: right;">TL15286</p>

Buy Now



Our support email:

ebooklibonline@outlook.com