

# 8880HP Windrower Tractor

Operators Manual

Rac 6-24950

Reprinted

**CASE III**



*THIS SAFETY ALERT SYMBOL INDICATES IMPORTANT SAFETY MESSAGES IN THIS MANUAL. WHEN YOU SEE THIS SYMBOL, CAREFULLY READ THE MESSAGE THAT FOLLOWS AND BE ALERT TO THE POSSIBILITY OF PERSONAL INJURY OR DEATH.*

M171B

## IMPORTANT

If This Machine Is Used By An Employee Or Is Loaned Or Rented, Make Certain That The Operator(s), Prior To Operating:

1. Is Instructed In Safe And Proper Use.
2. Reviews And Understands The Manual(s) Pertaining To The Machine.



## 8880HP Windrower Tractor



855WT-98J-52

### TO OUR CUSTOMER

We appreciate your confidence in CASE IH Farm Equipment and thank you for your patronage. In preparing this manual, we hope we have furnished you with a valuable tool for operating and maintaining this fine machine. Use this manual as your guide. Practicing the instructions given here will result in many years of dependable service from your machine.

Your Dealer can give you assistance with CASE IH parts and specially trained personnel to assist you in repair and maintenance.

Call your Dealer if you need any assistance or information.

**CALIFORNIA**  
**Proposition 65 Warning**

**WARNING:** Diesel engine exhaust and some of its constituents are known to the State of California to cause cancer, birth defects, and other reproductive harm.

**WARNING:** Battery posts, terminals and related accessories contain lead and lead compounds, chemicals known to the State of California to cause cancer, birth defects, and other reproductive harm. **Wash hands after handling.**

# TABLE OF CONTENTS

SPECIFICATIONS .....	IV
SERIAL NUMBERS .....	VI
CHECKLISTS .....	VII
SAFETY PRECAUTIONS .....	IX
GENERAL INFORMATION .....	1
DESCRIPTION .....	5
SERVICING .....	17
PREPARATION .....	42
OPERATION .....	45
MAINTENANCE .....	71
TROUBLESHOOTING .....	121
STORAGE .....	123
EXTRA EQUIPMENT .....	125
ALPHABETICAL INDEX .....	127

## SPECIFICATIONS

# SPECIFICATIONS

*(Specifications and design are subject to change without notice and without liability therefore.)*

**MODEL** ..... 8880HP Windrower Tractor

### DIMENSIONS AND WEIGHTS

Length, overall with header ..... 6500 mm (255.9 IN)  
wheel base ..... 3556 mm (140 IN)

### Height

top of cab ..... 3388 mm (133.4 IN)  
clearance under walking beam ..... 1034 mm (40.7 IN)  
clearance under frame ..... 1042 mm (41.0 IN)

### Width

outside of hubs ..... 3034 mm (119.5 IN)  
outside of tires ..... 3868 mm (152.3 IN)

Tread width, drive tires ..... 3274 mm (128.9 IN)

### Tread width, tailwheels

minimum ..... 2144 mm (84.4 IN)  
maximum ..... 3048 mm (120 IN)

### Weight (approximate)

without header ..... 4110 kg (9060 LB)  
with rotary header ..... 6051 kg (13340 L)

### TIRES

Drive wheels ..... 23.1 x 26 turf tread  
wheel nuts ..... 5/8-18  
torque ..... 271 N-m (200 LB-FT)

Tailwheels ..... 14L-16.1, 6-ply implement rib  
wheel bolts and nuts ..... 9/16-18  
torque ..... 165 N-m (120 LB-FT)

### Tire pressure

Drive wheels ..... 138 kPa (20 psi)  
Tailwheels ..... 70 kPa (10 psi)

### ENGINE

Model ..... Case 6T-590

Horsepower ..... 165 @ 2500 r/min (rpm)

High idle ..... 2700 r/min (rpm)

Displacement ..... 5.9 L (359 CU IN)

### Cooling system

radiator ..... 2.8 fins/cm (7 fins/IN)

capacity ..... 34.1 L (36 U.S. quarts)

fan diameter ..... 622 mm (24.5 IN)

number of fan blades ..... 8

Fuel ..... ASTM No. 2 Diesel

Fuel tank capacity ..... 303 L (80 U.S. gallons)

### ELECTRICAL SYSTEM

System voltage ..... 12 volts

Grounding ..... negative

### Batteries

quantity ..... 2

capacity, each ..... 12 volt, 450 amp  
minimum cranking capacity @ 0°F

type ..... SAE J537, Group Size 24 or 27, top post

### Alternator

manufacturer ..... Robert Bosch

output ..... 95 amperes

### GROUND DRIVE SYSTEM

#### Final drive

Type ..... roller chain/planetary

Chain ..... No. 50

Tandem pump ..... Vickers Model 19, piston

Motors ..... Vickers Model MVE19, variable displacement

#### Speed, approximate

FIELD range ..... 0 to 16 km/h (0 to 10 mph)

ROAD range ..... 0 to 24 km/h (0 to 15 mph)

## SPECIFICATIONS

### HEADER DRIVE SYSTEM

Pump ..... Vickers Model PVH98, piston  
Motors ..... Vickers Model MFE19, fixed displacement

### HYDRAULIC SYSTEM

Ground drive system  
relief pressure ..... 37 925 kPa (5500 psi)  
Header drive system  
maximum pressure ..... 27 580 kPa (4000 psi)  
Header lift system  
relief pressure ..... 17 237 kPa (2500 psi)

### HEADER FLOTATION SYSTEM

Type ..... hydraulic with accumulator,  
adjustable from cab  
Accumulator charge pressure ..... 6206 kPa (900 psi)

### CAB

Cab glass ..... tinted, 6.8 m<sup>2</sup> (73 sq ft)  
Steering column ..... adjustable pivot and tilt  
Gages ..... fourteen function monitor  
analog flotation pressure gage  
digital speedometer

### AIR CONDITIONING

System size ..... 22 000 BTU/hr  
Refrigerant ..... HFC 134a  
Capacity ..... 1.8 kg (4.0 LBS)  
Compressor ..... Sanden 507H  
displacement ..... 154.9 cc (9.5 CU IN)

### ACCESSORIES

Lighting ..... 5 lamps front, rectangular halogen  
1 lamp rear, enhanced rectangular halogen  
flashers on header and tractor  
2 lamps side, tail light, turn signals  
Rear view mirrors, right and left ..... deluxe  
Controls ..... Shape-coded handles

### LUBRICATION

Grease Fittings  
lubricant ..... CASE IH 251 HEP Lithium Grease  
Wheel Bearings  
lubricant ..... CASE IH 251 HEP Lithium Grease  
Engine Oil  
quantity with filter change ..... 15 L (16 U.S. quarts)  
type of fluid ..... Case IH No. 1 Engine Oil,  
SAE 15W 40, API CE, CDII/CF-4

### Hydraulic System

quantity  
total system ..... 98.4 L (26 U.S. gallons)  
reservoir ..... 76 L (20 U.S. gallons)  
type of fluid ..... Engine Oil, SAE 15W 40  
type of fluid, alternate ..... Case IH Hy-Tran Plus  
*NOTE: Hy-Tran Plus can be added to factory-installed  
fluid, but to get the full benefit of the qualities of  
Hy-Tran Plus a complete oil replacement is required.*

### Chaincases, Final Drive

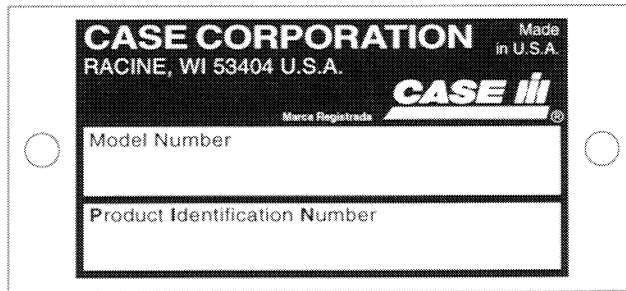
quantity, each ..... 3.8 L (8 pints)  
lubricant ..... Case IH 135H EP Gear Lube 85W 140  
Planetary Gearbox  
quantity, each ..... 1.1 L (2.4 pints)  
lubricant ..... Case IH 135H EP Gear Lube 85W 140

**SERIAL NUMBERS**

# SERIAL NUMBERS

When parts or assistance are needed, or when writing to your Authorized Case IH Dealer, always give this information:

1. Model Number of the Machine
2. Product Identification Number



**MODEL NUMBER AND PRODUCT IDENTIFICATION NUMBER PLATE**

**FOR LOCATION OF THE PRODUCT IDENTIFICATION NUMBER PLATE ON THIS MACHINE, SEE "GENERAL INFORMATION" SECTION IN THIS MANUAL.**

Write the serial numbers of your machine on the lines below.

**MODEL NUMBER** \_\_\_\_\_

**PRODUCT IDENTIFICATION NUMBER** \_\_\_\_\_

# CHECKLISTS



Use good safety practices when working around this machine.

## DAILY CHECKLIST

- \_\_\_ Do the lubrication and service items required. See the Service Checklist in the Servicing section for lubrication and service points. See the Preparation section for additional items to check while lubricating and servicing the machine.
- \_\_\_ Check pulleys and components for looseness and alignment.
- \_\_\_ Look for loose or missing bolts or parts.
- \_\_\_ Check the hydraulic system connections for leaks.
- \_\_\_ If the machine is to be transported on a road or highway at night or during the day, accessory lights, warning devices and slow moving vehicle emblem must be used for adequate warning to operators of other vehicles. Make sure all warning lights are operational. Observe local governmental regulations concerning movement of slow and wide vehicles.

## BEFORE EACH SEASON

- \_\_\_ Do all the items on the Daily checklist
- \_\_\_ Review the Safety Precautions section.
- \_\_\_ Remove accumulated dirt, trash, and crop material from machine. Make sure the area between the forming shields and the tractor mainframe is clean.
- \_\_\_ Replace primary and secondary air cleaner elements.
- \_\_\_ Lubricate all lubrication points as required. Visually inspect all lubrication points to make sure lubrication is being received. See the Servicing section for service points.
- \_\_\_ Check the level of the coolant in the coolant recovery tank.
- \_\_\_ Check the radiator for dirt and trash. Clean as required.
- \_\_\_ Replace hydraulic reservoir breather air filter.
- \_\_\_ With windrower operating in a stationary position, have an assistant observe the operation of moving parts. Watch for any signs of faulty operation, overheated bearings, and listen for any unusual sounds.
- \_\_\_ Make sure the proper operating adjustments have been made for your crop.
- \_\_\_ See the Extra Equipment section for extra equipment that will help you do a better job.



# SAFETY PRECAUTIONS

## Safety Information

Understand that your safety and the safety of other persons is measured by how you service and operate this machine. Know the positions and operations of all controls before you try to operate this machine. **MAKE SURE YOU CHECK ALL CONTROLS IN A SAFE AREA BEFORE STARTING YOUR WORK.**

**READ THIS MANUAL COMPLETELY** and make sure you understand the controls. All equipment has a limit. Make sure you understand the speed, brakes, steering, stability, and load characteristics of this machine before you start to operate the machine.

The safety information given in this manual does not replace safety codes, insurance needs, state and local laws. Make sure your machine has the correct equipment needed by the local laws and regulations.



**THIS SAFETY ALERT SYMBOL INDICATES IMPORTANT SAFETY MESSAGES IN THIS MANUAL. WHEN YOU SEE THIS SYMBOL, CAREFULLY READ THE MESSAGE THAT FOLLOWS AND BE ALERT TO THE POSSIBILITY OF PERSONAL INJURY OR DEATH.**

## SAFETY PRECAUTIONS

Read and understand all operating instructions and precautions before attempting to operate or service the machine.

After using the Operator's Manual, return the manual to the container provided on the machine.

Before doing any maintenance or service work on the tractor or the header you must:

- Park the machine on a solid level surface.
- Put all controls in NEUTRAL.
- Apply the parking lock.
- Center and lock the steering wheel.
- When working on the tractor, lower the header all the way.
- When working on the header, raise the header all the way.
- Stop the engine and take the key with you.
- Look and Listen! Make sure all moving parts have stopped.
- If the header is raised, install the cylinder safety stop on the left-hand header lift cylinder.

When the header is raised for service or maintenance work, the cylinder safety stop must be installed on the left-hand header lift cylinder to prevent lowering of the header.

Never check drive belts while the machine is running.

After lubricating, servicing or adjusting the machine, make sure all tools and equipment have been removed.

All shields, guards, and curtains must be in position before operating the machine.

Emphasize the importance of safety when working around and operating the machine.

Entanglement in rotating drive shafts can cause serious injury or death. Do not operate the machine with drive shafts shields open or removed.

Caution others, especially children, about climbing on the machine or being too close while machine is operating.

Never permit riders on the machine at any time except in the instructional seat.

Extra riders, especially children, are not permitted on the equipment.

The operator instruction seat is to be used only for instructing operators.

The operator instruction seat is only intended for short periods of use.

The instructional seat can be used when training a new operator or when a service technician is diagnosing a mechanical problem.

When the instructional seat is occupied, the following precautions must be taken:

- Machine must be driven at a slower speed and on level ground.
- Avoid driving on highways or public roads.
- Avoid quick starts and stops.
- Avoid sharp turns.
- Always wear seat belts.

Make sure all persons are away from the machine before operating the machine.

Never stand near the header while the machine is operating.

Never stand behind tractor while the header is running.

Do not attempt to remove foreign objects from rotary mower conditioner while the machine is running. Allow the rotating discs to stop completely before leaving the tractor seat. Listen for evidence of rotation.

Rocks and other debris can be thrown from the machine during operation possibly resulting in injury. Be careful when operating along the side of a road or buildings.

Tilt header back in fields where stones and foreign objects are present to raise the cutting knives and minimize debris being thrown by rotating knives.

Always keep the curtains in good condition. Do not remove curtains from the machine.

Regularly check that disc and knife bolts are tight, especially after striking foreign objects.

Never operate the machine at high speeds in crowded places.

Never suddenly reverse wheels to stop or backup.

Always remain seated and have seat belt fastened while operating machine.

Before starting the engine, make sure seat belts are securely fastened. The seat belt can help insure your safety if used and maintained. Never wear a seat belt loosely or with slack in the belt system. Never wear the seat belt in a twisted condition or pinched between the seat structural members.

A frequent cause of personal injury or death is persons falling off and being run over. DO NOT permit others to ride, except in designated operator instruction seat. The person in the instructional seat must wear the seat belt.

Any time the engine is running and the parking lock is disengaged, the machine will turn if the steering wheel is moved, even though the travel control lever is in neutral.

Always lower the header all the way when parking.

Always apply the parking lock when parking, and center and lock the steering wheel.

Always park crosswise to the slope when parking on a hill.

Always keep hands, feet, and clothing away from moving parts.

Never remove the cap from a hot radiator; escaping steam and hot fluids can cause personal injury.

Bypass starting can override the neutral start switch causing death or serious injury. The neutral start system is designed for operator protection. Any manual override of this system can cause death or serious injury. Never attach booster cables to the starter terminals or short across the starter terminals.

When connecting a booster battery or auxiliary power source to the windrower battery as a starting aid, ALWAYS attach the jumper cables as follows to prevent possible explosion of hydrogen gas released by the batteries.

## SAFETY PRECAUTIONS

Gas given off by batteries is explosive! To avoid personal injury or damage to battery, avoid sparks near batteries.

**BATTERY ACID CAUSES SEVERE BURNS.** Batteries contain sulfuric acid. Avoid contact with skin, eyes, or clothing. Antidote: **EXTERNAL** - Flush with water. **INTERNAL** - Drink large quantities of water or milk. **DO NOT** induce vomiting. Seek medical attention immediately. **EYES** - Flush with water for 15 minutes and seek medical attention immediately. **BATTERIES PRODUCE EXPLOSIVE GASES.** Keep sparks, flame, cigars, and cigarettes away. Ventilate when charging or using in an enclosed area. Always wear eye protection when working near batteries. Wash hands after handling. **KEEP OUT OF REACH OF CHILDREN.**

Hydraulic fluid escaping under pressure can have sufficient force to penetrate the skin, causing serious injury. Be sure to relieve all pressure from hydraulic lines before disconnecting them. Before applying pressure to the system, make sure all connections are tight and that hoses and lines have not been damaged.

Hydraulic fluid escaping from a very small hole can be almost invisible. Always use a piece of cardboard or wood, rather than hands, to search for suspected leaks. If injured by escaping hydraulic fluid, see a doctor immediately.

Do not transport or drive the machine with header up and safety stop in safety position.

Always travel with the header as low as possible.

**BE AWARE** of the width of the machine. Be careful when roading or transporting the machine on narrow roads and across narrow bridges. See Specifications for the overall dimensions.

Always use ample safety warnings and adequate lights when roading or transporting the machine on public roads. Be sure the SMV emblem is visible. Check with your local law enforcement agencies for specific requirements.

See the Operation Section for information for safe moving or towing of the machine.

Thank you so much for reading.  
Please click the “Buy Now!”  
button below to download the  
complete manual.



After you pay.

You can download the most  
perfect and complete manual in  
the world immediately.

Our support email:

[ebooklibonline@outlook.com](mailto:ebooklibonline@outlook.com)