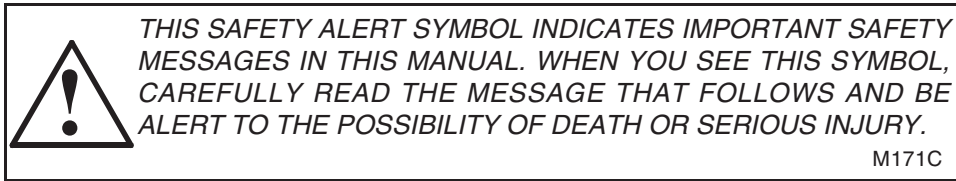


# **MX Series Magnum Tractors MX210 and MX240**

## **Operators Manual**

Rac 6-36200ENG




**CASE** *ih*



If Safety Decals on this machine use the words **Danger, Warning or Caution**, which are defined as follows:

- **DANGER:** Indicates an immediate hazardous situation that, if not avoided, will result in death or serious injury. The color associated with Danger is RED.
- **WARNING:** Indicates a potentially hazardous situation that, if not avoided, could result in death or serious injury. The color associated with Warning is ORANGE.
- **CAUTION:** Indicates an potentially hazardous situation that, if not avoided, may result in minor or moderate injury. It may also be used to alert against unsafe practices. The color associated with Caution is YELLOW.

If Safety Decals on this machine are ISO two panel Pictorial, decals are defined as follows:

- The first panel indicates the nature of the hazard.
- The second panel indicates the appropriate avoidance of the hazard.
- Background color is YELLOW.
- Prohibition symbols such as   and  if used, are RED.



# WARNING

IMPROPER OPERATION OF THIS MACHINE CAN CAUSE DEATH OR SERIOUS INJURY. BEFORE USING THIS MACHINE, MAKE CERTAIN THAT EVERY OPERATOR:

- Is instructed in safe and proper use of the machine.
- Reads and understands the Manual(s) pertaining to the machine.
- Reads and understands ALL Safety Decals on the machine.
- Clears the area of other persons.
- Learns and practices safe use of machine controls in a safe, clear area before operating this machine on a job site.

It is your responsibility to observe pertinent laws and regulations and follow Case, LLC instructions on machine operation and maintenance.

# GENERAL TABLE OF CONTENTS

<b>1 – TO THE OWNER</b> .....	<b>1</b>
STATEMENT OF TRACTOR INTENDED USE .....	1
OPERATOR MANUAL STORAGE COMPARTMENT .....	1
PRODUCT IDENTIFICATION AND SERIAL NUMBERS .....	3
MACHINE COMPONENTS .....	5
<b>2 – SAFETY/DECALS</b> .....	<b>7</b>
SAFETY RULES .....	7
PERSONAL SAFETY .....	10
INSTRUCTIONAL SEAT SAFETY .....	10
MAINTENANCE SAFETY .....	11
FIRE SAFETY .....	11
BATTERY SAFETY .....	12
MACHINE OPERATION AND ROLL-OVER SAFETY .....	12
HAZARDOUS CHEMICALS .....	13
SAFETY DECALS .....	14
ROLL OVER PROTECTIVE STRUCTURE (ROPS) .....	17
CLEANING CAB WINDOWS .....	18
INTERIOR REAR VIEW MIRROR .....	18
SEAT BELTS .....	19
TRACTOR WARNING LAMPS AND SMV SYMBOL .....	20
IMPLEMENT WARNING LAMPS AND SMV SYMBOL .....	23
SAFETY CHAIN .....	24
<b>3 – OPERATING CONTROLS</b> .....	<b>25</b>
TRACTOR ACCESS .....	25
OPERATORS SEAT WITH AIR SUSPENSION .....	26
INSTRUCTIONAL SEAT (IF EQUIPPED) .....	28
CD PLAYER – 6-DISC (IF EQUIPPED) .....	28
STEERING COLUMN CONTROLS .....	29
FOOT PEDALS .....	31
CENTER CONSOLE CONTROLS .....	32
RIGHT HAND CONSOLE CONTROLS .....	34
ARMREST CONSOLE CONTROLS .....	42
RIGHT HAND FENDER CONTROLS (WITH STANDARD TEMPERATURE CONTROL) .....	45
AUTOMATIC TEMPERATURE CONTROL SYSTEM (IF EQUIPPED) .....	49
REAR WINDOW .....	52
DOME LAMP .....	52
RADIO (IF EQUIPPED) .....	53
SUN SHADE (IF EQUIPPED) .....	53
INTERIOR REAR VIEW MIRROR .....	53
EXTENDABLE MIRRORS (IF EQUIPPED) .....	54
UTILITY CONSOLE .....	54
<b>4 – INSTRUMENTATION</b> .....	<b>55</b>
TRACTOR INSTRUMENTATION .....	55
INSTRUMENT CLUSTER (PANEL 1) .....	56
FUNCTIONAL DATA AND PROGRAMMABLE DISPLAY (PANEL 2) .....	57
PROGRAMMING THE DISPLAY MONITOR .....	61
WARNING DISPLAYS (PROGRAMMABLE DISPLAY) .....	75
<b>5 – OPERATING INSTRUCTIONS</b> .....	<b>81</b>
BEFORE STARTING THE ENGINE .....	81
SERVICE INDICATOR LAMPS AND BAR GRAPH DISPLAYS .....	82
SEAT BELTS .....	83
NORMAL ENGINE STARTING PROCEDURE .....	84

STOPPING THE ENGINE .....	86
COLD TEMPERATURE OPERATION .....	87
POWER SHIFT TRANSMISSION .....	92
TRANSMISSION .....	93
SHUTTLE SHIFTING .....	96
AUTOSHIFT OPERATION (IF EQUIPPED) .....	98
CREEPER SPEED OPERATION (IF EQUIPPED) .....	101
CUSHION HITCH RIDE CONTROL OPERATION (IF EQUIPPED) .....	103
TOWING THE TRACTOR .....	105
HOW TO TRANSPORT THE TRACTOR .....	108
<b>6 – FIELD OPERATION .....</b>	<b>109</b>
GENERAL PROCEDURES FOR CONNECTING IMPLEMENTS .....	109
POWER TAKEOFF (PTO) .....	111
THREE POINT HITCH .....	124
HITCH OPERATION .....	140
DRAWBAR PREPARATION .....	150
REMOTE HYDRAULICS .....	155
CHEMICAL TANK MOUNTING .....	170
AUXILIARY POWER CONNECTIONS .....	172
MONITOR MOUNTING .....	174
GROUND SPEED SENSOR CONNECTOR .....	175
TRAILER BRAKE CONNECTOR (IF EQUIPPED) .....	176
CAB STEPS .....	177
<b>7 – IN-FIELD PERFORMANCE .....</b>	<b>179</b>
DIFFERENTIAL LOCK .....	179
MFD OPERATION (IF EQUIPPED) .....	182
BALLASTING YOUR TRACTOR FOR OPTIMUM PERFORMANCE .....	185
WHEEL SLIP .....	205
POWER HOP .....	206
MECHANICAL FRONT DRIVE (MFD) TRACTORS .....	207
MFD STEERING AND OSCILLATION STOPS .....	212
FRONT WHEEL FENDERS (IF EQUIPPED) .....	216
REAR AXLE .....	220
TRACTOR JACKING POINTS .....	223
REAR WHEEL TREAD SETTING - SINGLES .....	224
REAR WHEEL TREAD SETTING - DUALS .....	226
<b>8 – LUBRICATION/FILTERS/FLUIDS/MAINTENANCE .....</b>	<b>233</b>
ENVIRONMENT .....	233
PLASTIC AND RESIN PARTS .....	233
TOOL BOX (IF EQUIPPED) .....	233
SYSTEM CAPACITIES .....	234
HOOD AND SERVICE DOOR ACCESS .....	238
LUBRICATION/MAINTENANCE CHART .....	241
<b>9 – ELECTRICAL SYSTEM .....</b>	<b>285</b>
SPECIFICATIONS .....	285
RADIO REGIONAL PROGRAMMING .....	289
BATTERY SYSTEM SERVICING .....	290
BULB AND LAMP REPLACEMENT .....	293
<b>10 – SPECIFICATIONS .....</b>	<b>307</b>
DIESEL ENGINE .....	307
POWER TRAIN .....	308
TRAVEL SPEEDS .....	311
MAXIMUM RECOMMENDED OPERATING WEIGHTS .....	313



## TO THE OWNER

This manual contains important information about the safe operation, adjustment and routine maintenance of your Case IH MX Magnum Series Tractor. The manual is divided into ten sections as outlined in the General Table of Contents Page(s). Refer to the Detail Index at the end of this manual for locating specific items about your tractor.

DO NOT operate or permit anyone to operate or service this machine until you or the other persons have read this manual. Use only trained operators who have demonstrated the ability to operate and service this machine correctly and safely.

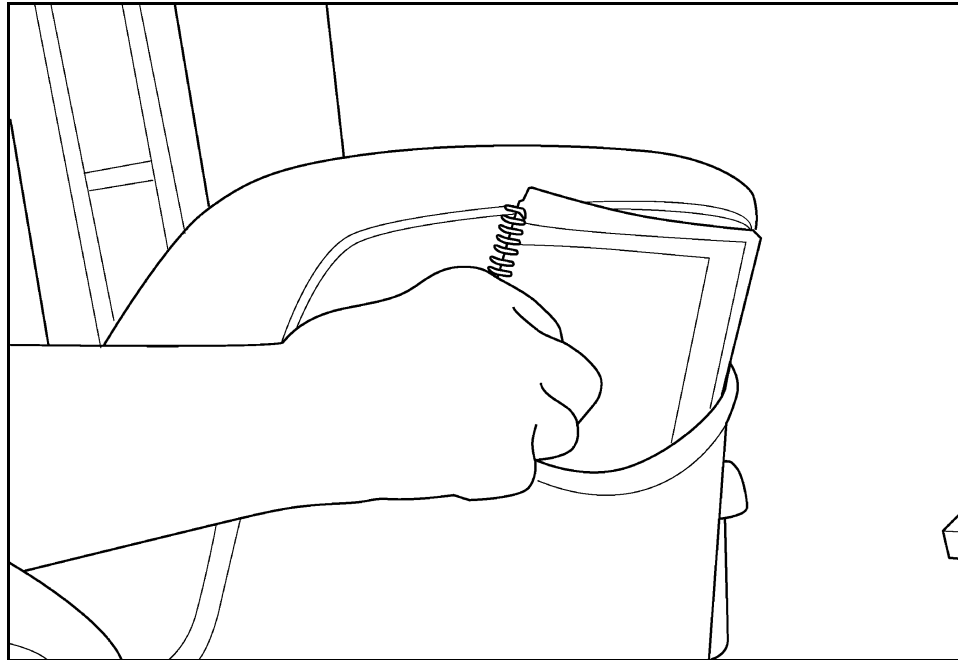
This operators manual is to be stored in the manual compartment equipped on this machine. Make sure this manual is in good condition. Contact your Case IH dealer to obtain additional manuals. Contact your dealer for any further information or assistance about your machine. Your dealer has Case IH approved service parts. Your dealer has technicians with special training that know the best methods of repair and maintenance for your tractor.

### STATEMENT OF TRACTOR INTENDED USE

The Case IH MX Magnum Series Tractor, with standard equipment and authorized attachments, is intended to be used for customary farming, land leveling and related agriculture operations. Do not use this machine for any purpose other than those described in this manual.

Consult an authorized dealer or Case on changes, additions or modifications that can be required for this machine to comply with various regulations and safety requirements. Unauthorized modifications will cause serious injury or death. Anyone making such unauthorized modifications is responsible for the consequences.

### OPERATOR MANUAL STORAGE COMPARTMENT

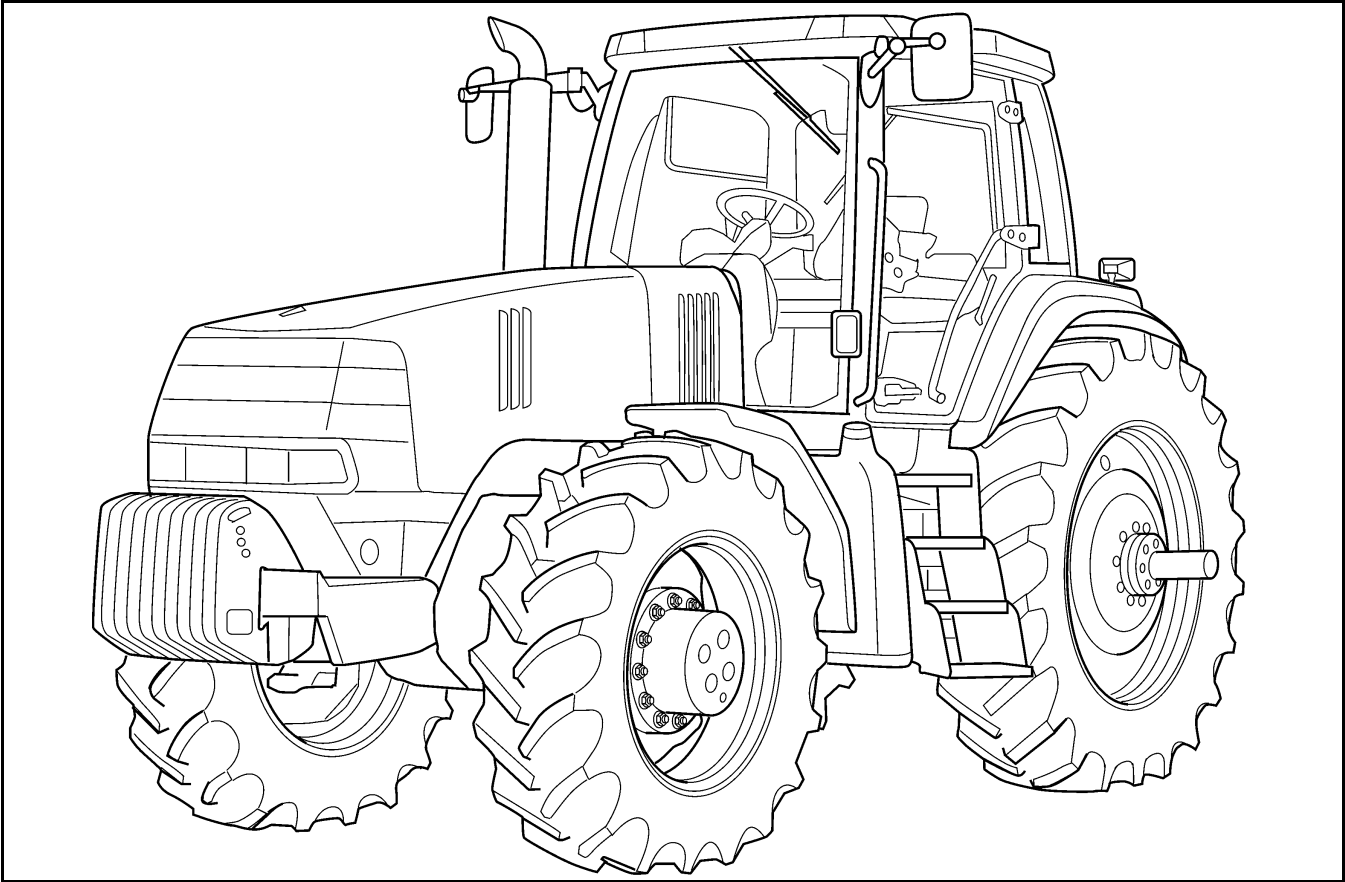


MK99H025

Keep the Operators Manual in the storage compartment provided on your tractor. The Operators Manual must be available for use by all operators.

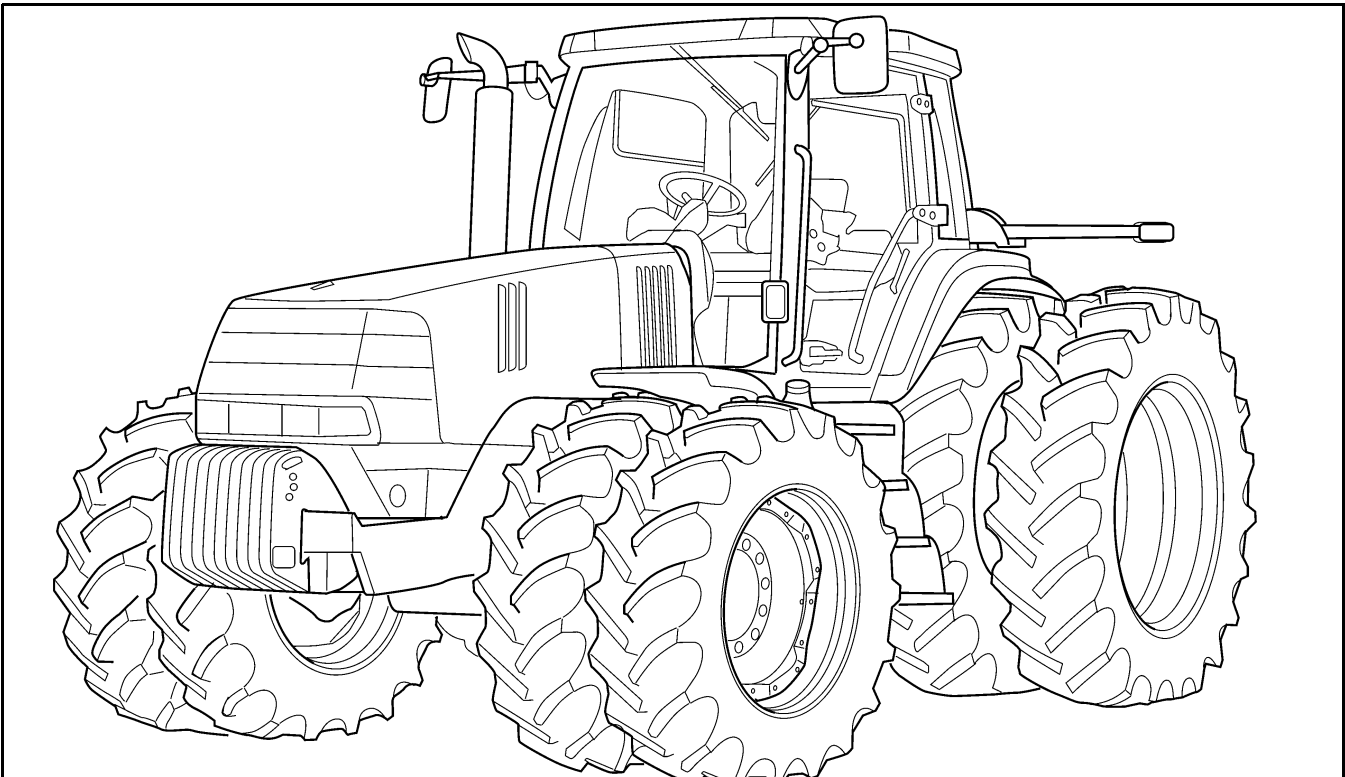
**NOTE:** *The right hand and left hand side of the tractor used in this manual are the same as your right hand and left hand when sitting in the tractor seat looking forward.*

**MX SERIES MAGNUM TRACTOR**



**MX Magnum Tractor with MFD**

RH02H168



**MX Magnum MFD Tractor with Front and Rear Duals**

RH02H170

## PRODUCT IDENTIFICATION AND SERIAL NUMBERS

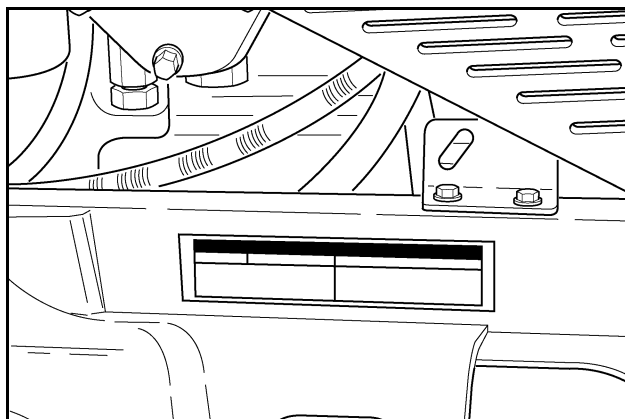
Write your machine Model Number, Product Identification Number (P.I.N.) and Serial Numbers of major components on the lines provided. If needed, give these numbers to your Case IH dealer when you need parts or information for your machine.

### TRACTOR MODEL AND PRODUCT IDENTIFICATION NUMBER

Model: \_\_\_\_\_

P.I.N. \* JJA: \_\_\_\_\_

Located on right hand front casting.

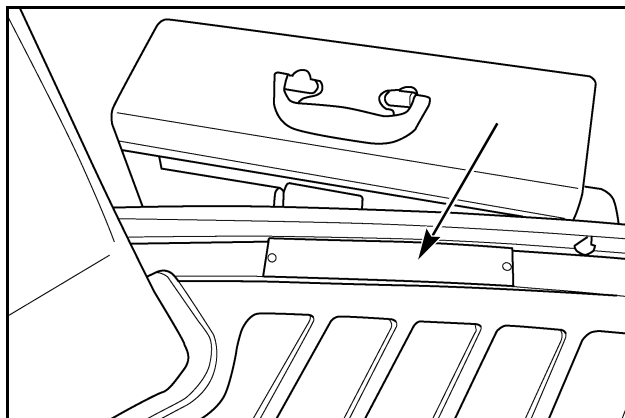


RH02H283

### ROPS SERIAL NUMBER

\_\_\_\_\_

Located on the right hand cab floor.

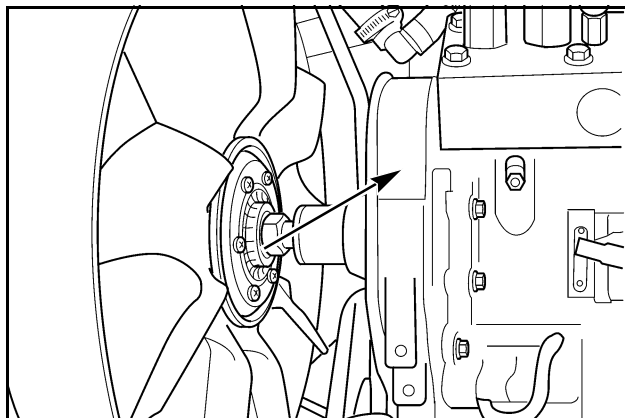


RH02H174

### ENGINE SERIAL NUMBER

\_\_\_\_\_

Located on front left hand side of engine.



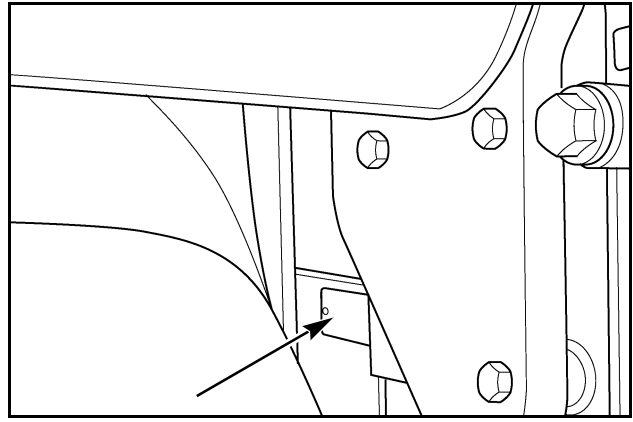
RH02G267



TRANSMISSION SERIAL NUMBER

\_\_\_\_\_

Located on the right hand side of the transmission behind the fuel tank and to the left of the ground stud.

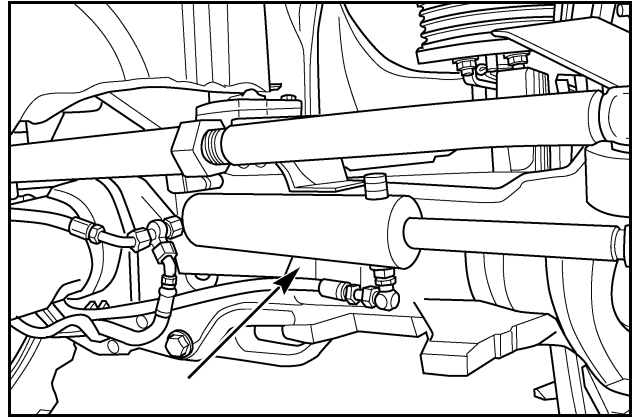


RH02H176

AXLE SERIAL NUMBER

\_\_\_\_\_

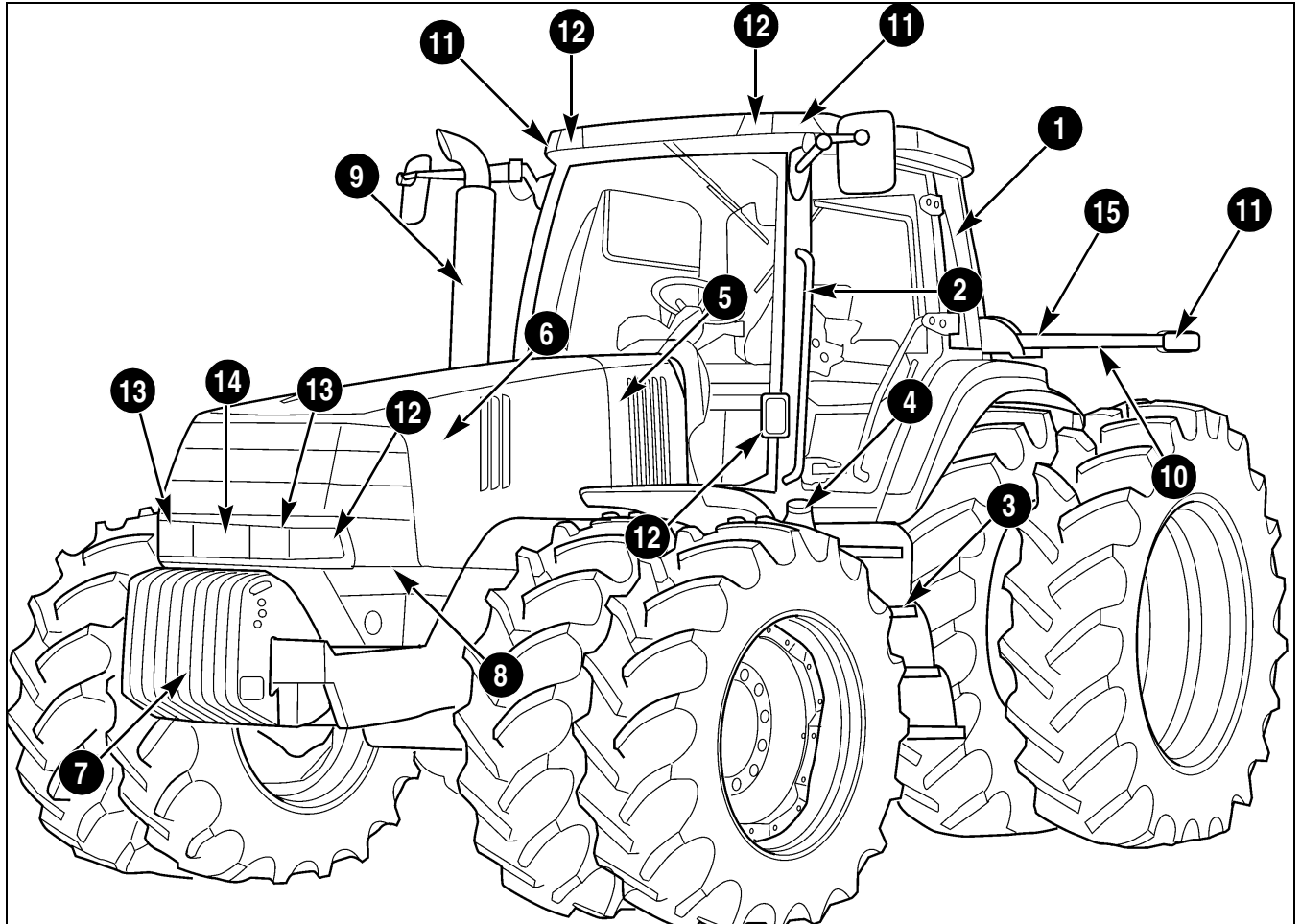
MFD AXLE: Located on the rear right hand side of the axle housing.



RH02H178

**MFD Axle**

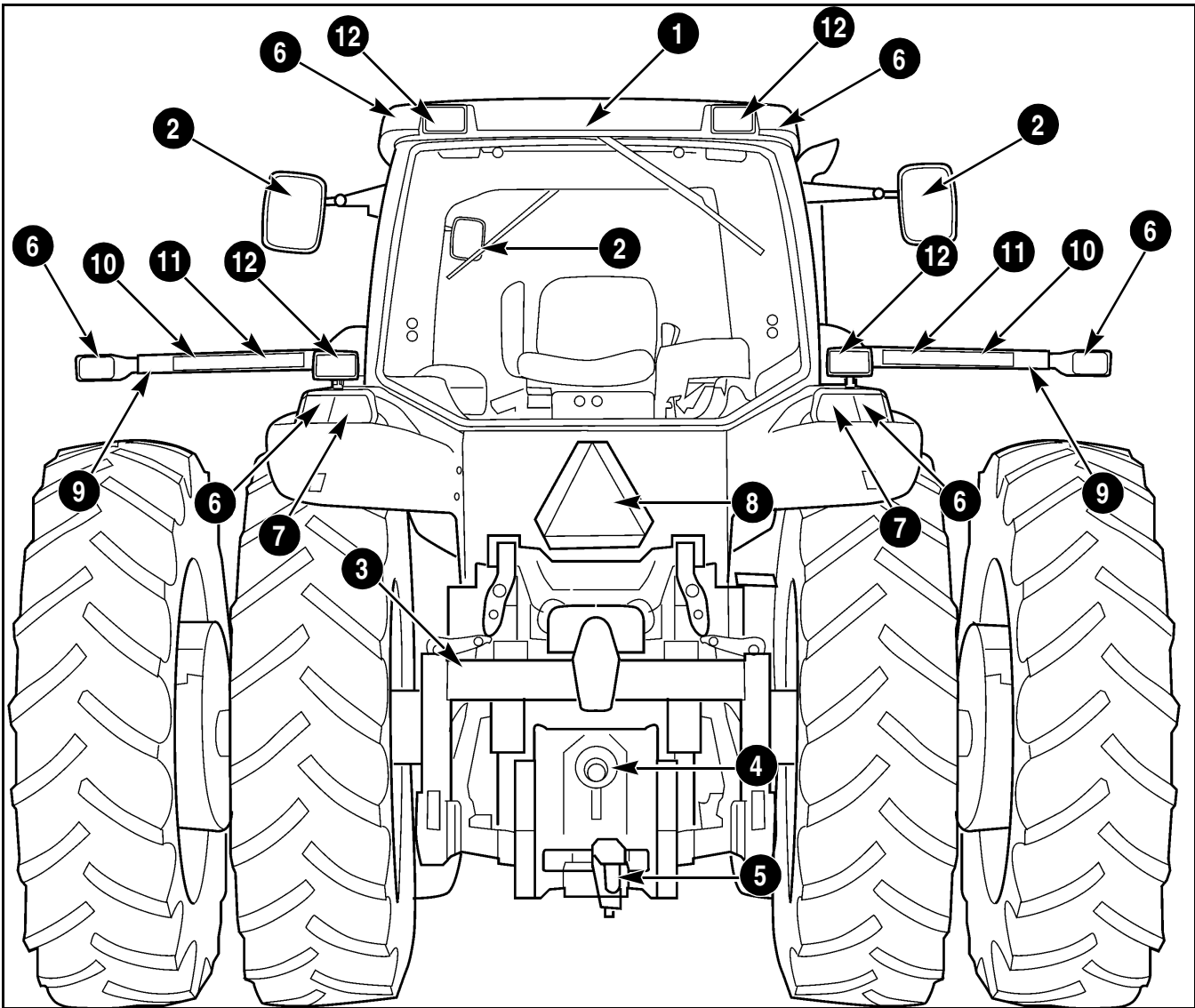
## MACHINE COMPONENTS



RH02H170

- |              |  |                           |                    |
|--------------|--|---------------------------|--------------------|
| 1. ROPS CAB  | 5. SERVICE DOOR  | 9. EXHAUST STACK          | 12. WORK LAMP      |
| 2. HAND RAIL | 6. HOOD  | 10. WIDE TRANSPORT MARKER | 13. ROAD/WORK LAMP |
| 3. STEPS     | 7. FRONT WEIGHTS   | 11. AMBER WARNING LAMP    | 14. HID LAMP       |
| 4. FUEL TANK | 8. FUEL COOLER/CONDENSER, AIR COOLER, OIL COOLER, RADIATOR | 15. AMBER REFLECTOR       |                    |

1 - TO THE OWNER



RH02H171

- |                     |                        |                          |                                |
|---------------------|------------------------|--------------------------|--------------------------------|
| 1. ROPS CAB         | 4. POWER TAKEOFF (PTO) | 7. TAIL AND BRAKE LAMP   | 10. RED REFLECTOR              |
| 2. REAR VIEW MIRROR | 5. DRAWBAR             | 8. SMV SYMBOL            | 11. ORANGE REFLECTOR           |
| 3. REAR HITCH       | 6. AMBER WARNING LAMP  | 9. WIDE TRANSPORT MARKER | 12. ROOF AND FENDER WORK LAMPS |

**This section gives important safety information for your tractor.**

## SAFETY

Understand that your safety and the safety of other persons is measured by how you service and operate this machine. Know the positions and operation of all controls before you try to operate. **MAKE SURE YOU CHECK ALL CONTROLS IN A SAFE AREA BEFORE STARTING YOUR WORK.**

READ THIS MANUAL COMPLETELY and make sure you understand the controls. All equipment has limits. Make sure you understand the speed, brakes, steering stability and load characteristics of this machine before you start to operate.

The safety information given in this manual does not replace safety codes, insurance needs, federal, state and local laws. Make sure your machine has the correct equipment needed by the local laws and regulations.

We are continuing to work for your safety by making tractors with better protection and by providing these rules for safe operation.

**WARNING:** *THIS SAFETY ALERT SYMBOL INDICATES IMPORTANT SAFETY MESSAGES IN THIS MANUAL. WHEN YOU SEE THIS SYMBOL, CAREFULLY READ THE MESSAGE THAT FOLLOWS AND BE ALERT TO THE POSSIBILITY OF PERSONAL INJURY OR DEATH.*

SM171B



### SAFETY RULES



- Before starting the engine, be sure all operating controls are in neutral or park lock position. This will eliminate accidental movement of the machine or start up of power driven equipment. R106E
- Operate controls only when seated in the operators seat. R137A
- Securely fasten your seat belt. Your machine is equipped with a ROPS cab for your protection. The seat belt can help insure your safety if it is used and maintained. Never wear a seat belt loosely or with slack in the belt system. Never wear the belt in a twisted condition or pinched between the seat structural members. Inspect seat belt webbing, buckle and retractors to ensure they are not damaged. If damage is apparent, repair before operating the tractor. M437A
- A frequent cause of death or serious injury is persons falling off machinery and being run over. Keep cab door closed. Instructional seat is used only for instructing or service diagnosing only. DO NOT permit others to ride, especially children. Seat belt (if equipped) must be worn at all times. M488C
- Before leaving the tractor, stop the engine, put all controls in neutral or park lock position, remove the key from the key switch. R301B
- Stay off slopes too steep for safe operation. Shift down before you start up or down a hill with a heavy load. Avoid “free wheeling”. R123A
- Do not drive on roads, or at high speed anywhere, with the differential lock engaged. Difficult steering will occur and can result in an accident. In field operation, use the differential lock for traction improvement, but release for turning at row ends. R116A

**SAFETY RULES**

- Travel speed should be such that complete control and machine stability is maintained at all times. Where possible, avoid operating near ditches, embankments and holes. Reduce speed when turning, crossing slopes, and on rough, slick or muddy surfaces. R109B
- Collision of high speed road traffic and slow moving machines can cause personal injury or death. On roads, use flasher lights according to local laws. Keep SMV emblem visible. Pull over to let faster traffic pass. Slow down and signal before turning off. R110E
- Brake pedals must be locked together for road travel. This will insure uniform brake application and maximum stopping ability. R112A
- For speeds up to 16 km/h (10 MPH), make sure that the weight of a trailed vehicle that is not equipped with brakes does NOT EXCEED two times the tractor weight. For speeds up to 40 km/h (25 MPH), make sure that the weight of a trailed vehicle that is not equipped with brakes, does NOT EXCEED the weight of the tractor. Stopping distance increases with increasing speed as the weight of the towed load increases, especially on hills and slopes. M814
- Extra weight and bad traction conditions such as mud or ice increase your stopping distance. Remember that liquid in the tires, weights on the machine or wheels, tanks filled with fertilizer, herbicides or insecticides - all these add weight and increase the distance you need in which to stop. R138B
- PTO driven machinery can cause serious injury. Before working on or near the PTO shaft, or servicing or clearing the driven machine, put the PTO lever in the DISENGAGE position and STOP the engine. R154A
- Whenever a PTO driven machine is in operation, the PTO guard must be in place for most operations to prevent injury to the operator or bystanders. Where attachments, such as pumps, are installed on the PTO shaft (especially if the tractor PTO guard is moved upward or removed), extended shielding equivalent to the PTO guard must be installed with the attachment. Install the PTO guard to its original position immediately when the attachment is removed. R273A
- When doing stationary PTO work and dismounting from the tractor with the PTO running, keep clear of all moving parts as they are a potential safety hazard. R127A
- Never operate the engine in a closed building. Proper ventilation is required under all circumstances. R142A
- Never refuel the machine when the engine is hot or running. Never smoke while refueling. R139C
- Check and service cooling system according to the maintenance instructions. Hot coolant can spray out if the deaeration tank cap is removed while system is hot. To remove the deaeration tank cap, let system cool, turn to first notch, then wait until all pressure is released. Scalding can result from fast removal of the cap. R141C
- Hydraulic oil or diesel fuel leaking under pressure can penetrate the skin and cause infection or other injury. To Prevent Personal Injury: Relieve all pressure before disconnecting fluid lines. Before applying pressure, make sure all connections are tight and components are in good condition. Never use your hand to check for suspected leaks under pressure. Use a piece of cardboard or wood for this purpose. If injured by leaking fluid, see your doctor immediately. R149B
- Rear upset can result if pulling from wrong location on tractor. Hitch only to the drawbar. Use three point hitch only with the implements designed for its use - not as a drawbar. R119A
- Battery explosion and/or damage to electrical components can result from improper connection of booster batteries or charger. Connect positive to positive and negative to negative. Externally, battery acid can cause burns and blindness, and taken internally it is poisonous. R146B
- It is good practice to carry a fire extinguisher on the machine. Be sure that the extinguisher is properly maintained and be familiar with its proper use. R102B

Thank you so much for reading.  
Please click the “Buy Now!”  
button below to download the  
complete manual.



After you pay.

You can download the most  
perfect and complete manual in  
the world immediately.

Our support email:

[ebooklibonline@outlook.com](mailto:ebooklibonline@outlook.com)