

CASE
400 Series
251 Cu. In.
Spark Ignition and
Diesel Engine Units

Supplement to Operator's Manual
Forms 5688 or 5689

Operator's Manual
6225

Reprinted

CASE






THIS SAFETY ALERT SYMBOL INDICATES IMPORTANT SAFETY MESSAGES IN THIS MANUAL. WHEN YOU SEE THIS SYMBOL, CAREFULLY READ THE MESSAGE THAT FOLLOWS AND BE ALERT TO THE POSSIBILITY OF PERSONAL INJURY OR DEATH.

M171B

If Safety Decals on this machine use the words **Danger, Warning or Caution**, which are defined as follows:

- **DANGER:** Indicates an immediate hazardous situation which if not avoided, will result in death or serious injury. The color associated with Danger is RED.
- **WARNING:** Indicates an potentially hazardous situation which if not avoided, will result in serious injury. The color associated with Warning is ORANGE.
- **CAUTION:** Indicates an potentially hazardous situation which if not avoided, may result in minor or moderate injury. It may also be used to alert against unsafe practices. The color associated with Caution is YELLOW.

If Safety Decals on this machine are ISO two panel Pictorial, decals are defined as follows:

- The first panel indicates the nature of the hazard.
- The second panel indicates the appropriate avoidance of the hazard.
- Background color is YELLOW.
- Prohibition symbols such as   and  if used, are RED.



WARNING

IMPROPER OPERATION OF THIS MACHINE CAN CAUSE INJURY OR DEATH. BEFORE USING THIS MACHINE, MAKE CERTAIN THAT EVERY OPERATOR:

- Is instructed in safe and proper use of the machine.
- Reads and understands the Manual(s) pertaining to the machine.
- Reads and understands ALL Safety Decals on the machine.
- Clears the area of other persons.
- Learns and practices safe use of machine controls in a safe, clear area before operating this machine on a job site.

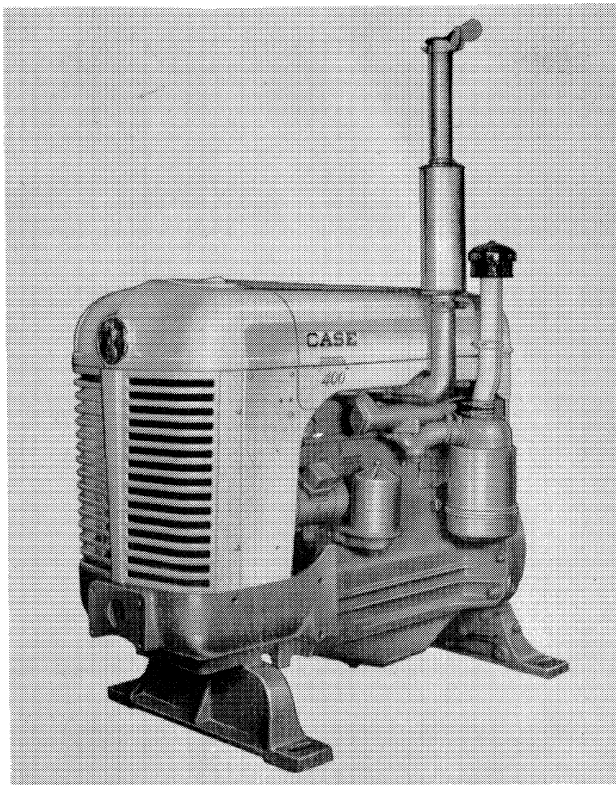
It is your responsibility to observe pertinent laws and regulations and follow Case Corporation instructions on machine operation and maintenance.

CASE

400 SERIES *251 Cu. In.*

SPARK IGNITION AND DIESEL ENGINE UNITS

**Supplement To Operator's Manuals
Forms 5688 or 5689**



This Supplement contains only the Specific Engine Information for the 400 Series CASE Engine Units not covered in the Tractor Operator's Manual.



**be careful.....
avoid accidents**



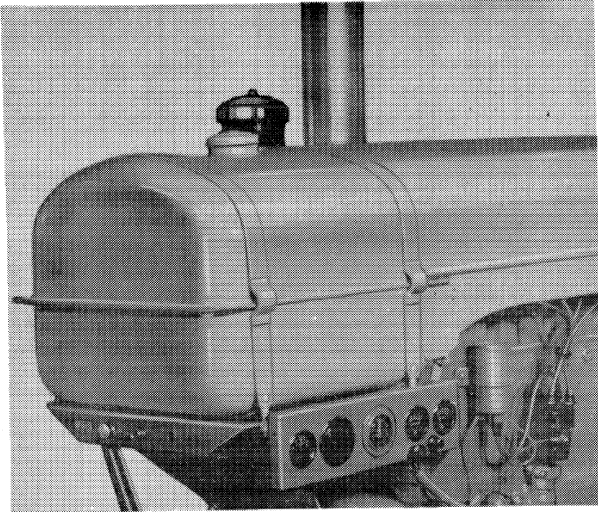


Figure 1. 400 Series Spark Ignition Engine Unit Equipped with Fuel Tank - Right Hand Side



Figure 2. 400 Series Spark Ignition Engine Unit - Left Hand Side

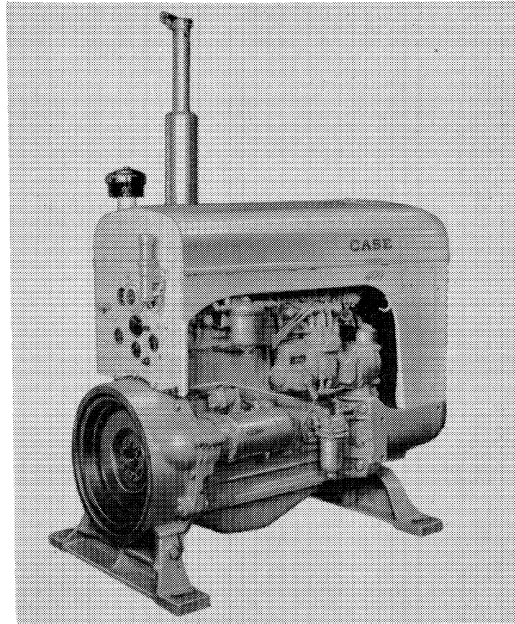


Figure 3. 400 Series Diesel Engine Unit less Fuel tank and clutch.

Note: Clutch Adapter housing is an SAE No. 3 housing.

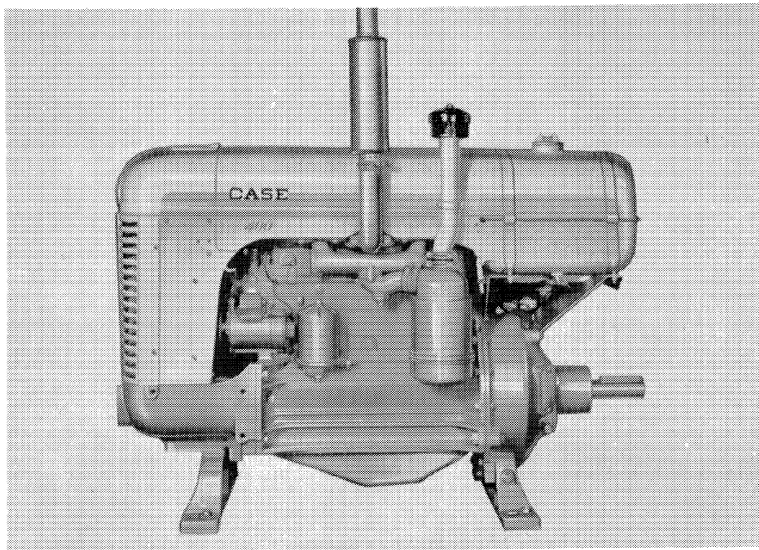


Figure 4. 400 Series Diesel Engine Unit Equipped with Fuel Tank.

SERIAL NUMBER

When ordering parts from your Authorized Case Dealer and in all contacts or correspondence with your dealer relative to the engine, always specify the Serial Number and Model of your engine unit.

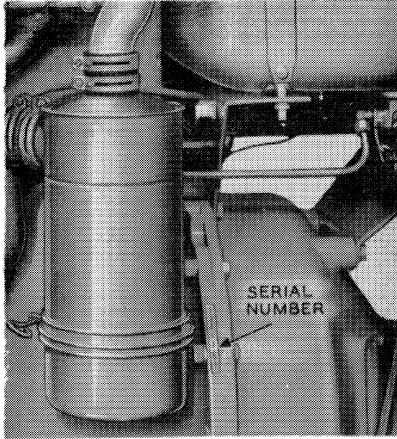


Figure 5

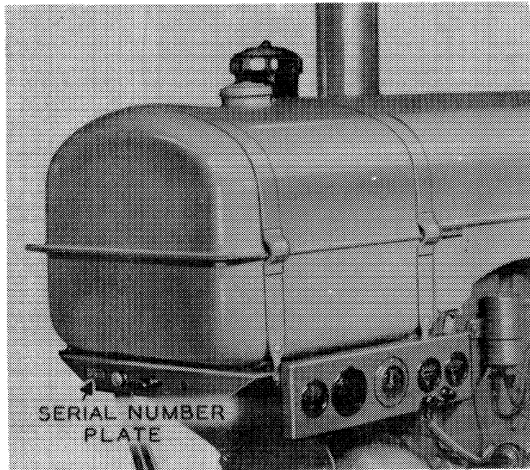


Figure 6

The Model and Serial Number are stamped on the number plate located at the rear of the engine, Figure 6. The serial number is also stamped on the left rear side of the engine block near the air cleaner, Figure 5.

For reference, fill in the serial number and model of your 400 Series Engine Unit provided below.

Model No. _____ Serial No. _____

Buy Now



Our support email:

ebooklibonline@outlook.com