

Page Title	Page Number
CYLINDER BLOCK AND TIMING GEAR COVER - GAS AND L.P.	2
CRANKSHAFT AND BEARINGS, FLYWHEEL, CAMSHAFT AND TIMING GEARS - GAS AND L.P.	4
PISTONS, RINGS, CONNECTING RODS AND BEARINGS - GAS AND L.P.	6
CYLINDER HEAD AND COVER, VALVES AND ROCKER ARMS - GAS AND L.P.	8
ENGINE GASKET SETS - GAS AND L.P.	10
OIL PUMP, OIL PAN, OIL FILTER - GAS AND L.P.	12
RADIATOR AND ATTACHING PARTS, WATER PUMP - GAS AND L.P.	14
MANIFOLD AND MUFFLER - GAS AND L.P.	16
FUEL TANK AND FUEL FILTER - GAS	18
CARBURETER - GAS	20
FUEL TANK AND LINES, VAPORIZER - L.P.	22
FUEL TANK AND LINES, VAPORIZER - L.P.	24
CARBURETOR - L.P.	26
THROTTLE, CHOKE, GOVERNOR - GAS AND L.P.	28
CYLINDER BLOCK - DIESEL	30
TIMING GEAR COVER - DIESEL	32
BALANCER - DIESEL	34
CRANKSHAFT AND BEARINGS, FLYWHEEL, CAMSHAFT AND TIMING GEARS - DIESEL	36
PISTONS, RINGS, CONNECTING RODS AND BEARINGS - DIESEL	38
CYLINDER HEAD AND COVER, VALVES AND ROCKER ARMS - DIESEL	40
ENGINE GASKET SETS - DIESEL	42
OIL PUMP, OIL PAN, OIL FILTER - DIESEL	44
RADIATOR AND ATTACHING PARTS, WATER PUMP - DIESEL	46
MANIFOLD AND MUFFLER - DIESEL	48
FUEL TANK AND LINES - DIESEL	50
FUEL TANK AND LINES - DIESEL	52
FUEL TANK AND LINES - DIESEL	54
FUEL PUMPS - DIESEL	56
FUEL INJECTION SYSTEM - DIESEL	58
FUEL FILTERS - DIESEL	60
INJECTION PUMP	62
COLD WEATHER STARTING EQUIPMENT - DIESEL	64
THROTTLE AND FUEL SHUT-OFF - DIESEL	66
AIR CLEANERS - GAS AND L.P.	68
UPPER INSTRUMENT PANEL AND INSTRUMENTS - GAS AND L.P.	70
LOWER INSTRUMENT PANEL AND SWITCHES - GAS AND L.P.	72
UPPER INSTRUMENT PANEL AND INSTRUMENTS - DIESEL	74
LOWER INSTRUMENT PANEL AND SWITCHES - DIESEL	76
MULTI-POWER SHIFT CONTROL	78
ELECTRICAL WIRING - GAS AND L.P.	80
ELECTRICAL WIRING - DIESEL	82
DISTRIBUTOR - GAS AND L.P.	84
GENERATOR - GAS AND L.P.	86
GENERATOR - DIESEL	88
GENERATOR - NEVER USED IN PRODUCTION, SERVICE REPLACEMENT ONLY	90
STARTER - GAS AND L.P.	92
STARTER	94
STARTER - DIESEL	96
LIGHTING EQUIPMENT - HOOD MOUNTED	98
LIGHTING EQUIPMENT - FENDER MOUNTED	100
FRONT AXLE - STANDARD AND HI-ARCH	102

TABLE OF CONTENT

00

FRONT AXLE - WHEAT AND RICE	104
STEERING GEAR	106
EXTERNAL POWER STEERING LINES - USED TRANSMISSION SERIAL NOS (REGULAR TRANSMISSION) DS627, (MULTI-POWER TRANSMISSION) DR16957 AND U	108
EXTERNAL POWER STEERING LINES - USED PRIOR TO TRANSMISSION SERIAL NOS (REGULAR TRA NS.) DS627 AND (MULTI-POWER TRANS.) DR16957	110
INTERNAL OIL LINES - USED W/REGULAR TRANSMISSION	112
INTERNAL OIL LINES - USED W/MULTI-POWER TRANSMISSION	114
POWER STEERING FILTER	116
TRANSMISSION PUMP	118
POWER STEERING CYLINDER	120
GEAR SHIFT	122
REGULAR TRANSMISSION	124
MULTI-POWER TRANSMISSION	128
MULTI-POWER TRANSMISSION COVER AND VALVES	132
TRANSMISSION AND CENTER HOUSING	134
CLUTCH AND CONTROLS - REGULAR TRANSMISSION	136
TRANSMISSION HOUSING, CLUTCH AND CONTROLS - MULTI-POWER	138
DIFFERENTIAL - WITHOUT LOCK	140
DIFFERENTIAL AND LOCK - LO-CLR. AND WESTERN MODELS (RIGHT HAND MOUNTED LOC K) ILLUSTRATED	142
POWER TAKE-OFF	144
P.T.O. VALVE AND CONTROLS	146
BRAKES - INCL. ITEMS 3 THRU 5	148
REAR AXLE - HI-CLR.	150
REAR AXLE - LO-CLR. AND WESTERN	152
FRONT WHEELS - SUPER 90	154
FRONT WHEELS - 90 WHEAT AND RICE	156
REAR WHEELS - POWER ADJUSTABLE	158
REAR WHEELS - POWER ADJUSTABLE	160
SHEET METAL - GAS	162
SHEET METAL - L.P.	164
SHEET METAL - DIESEL	166
FENDERS - HI-CLEARANCE	168
PLATFORM AND STEP PLATES - HI-CLEARANCE AND LO-CLEARANCE	170
SEAT	172
SEAT	174
DECALS AND MISCELLANEOUS ACCESSORIES - GAS, L.P., AND DIESEL	176
LOWER LINK CONTROL AND DRAWBAR - SUPER 90	178
HYDRAULIC LIFT CONTROLS - SUPER 90	180
HYDRAULIC LIFT COVER AND SHAFT - SUPER 90	184
HYDRAULIC LIFT LINKS - SUPER 90	186
HYDRAULIC LEVELING LINKS - SUPER 90	188
HYDRAULIC PUMP - SUPER 90	190
HYDRAULIC PUMP - SUPER 90	194
HYDRAULIC PUMP - 90 W & R	198
HYDRAULIC PUMP - 90 W & R	200
HYDRAULIC SWITCH VALVE AND LINES - SUPER 90	202
CENTER HOUSING AND HYDRAULIC LINES - 90 W & R	204
ACCESSORIES - FRONT END AND WHEEL ACCESSORIES	206
ACCESSORIES - REAR WHEEL ACCESSORIES	208
ACCESSORIES - COUPLER AND HOSE, SINGLE	210
ACCESSORIES - AUXILIARY VALVE (TWO SPOOL)	212
ACCESSIBLE OIL FILLER PIPE - AUXILIARY VALVE (SINGLE SPOOL)	214
TWO SPOOL VALVE REPLACEMENT KIT	216

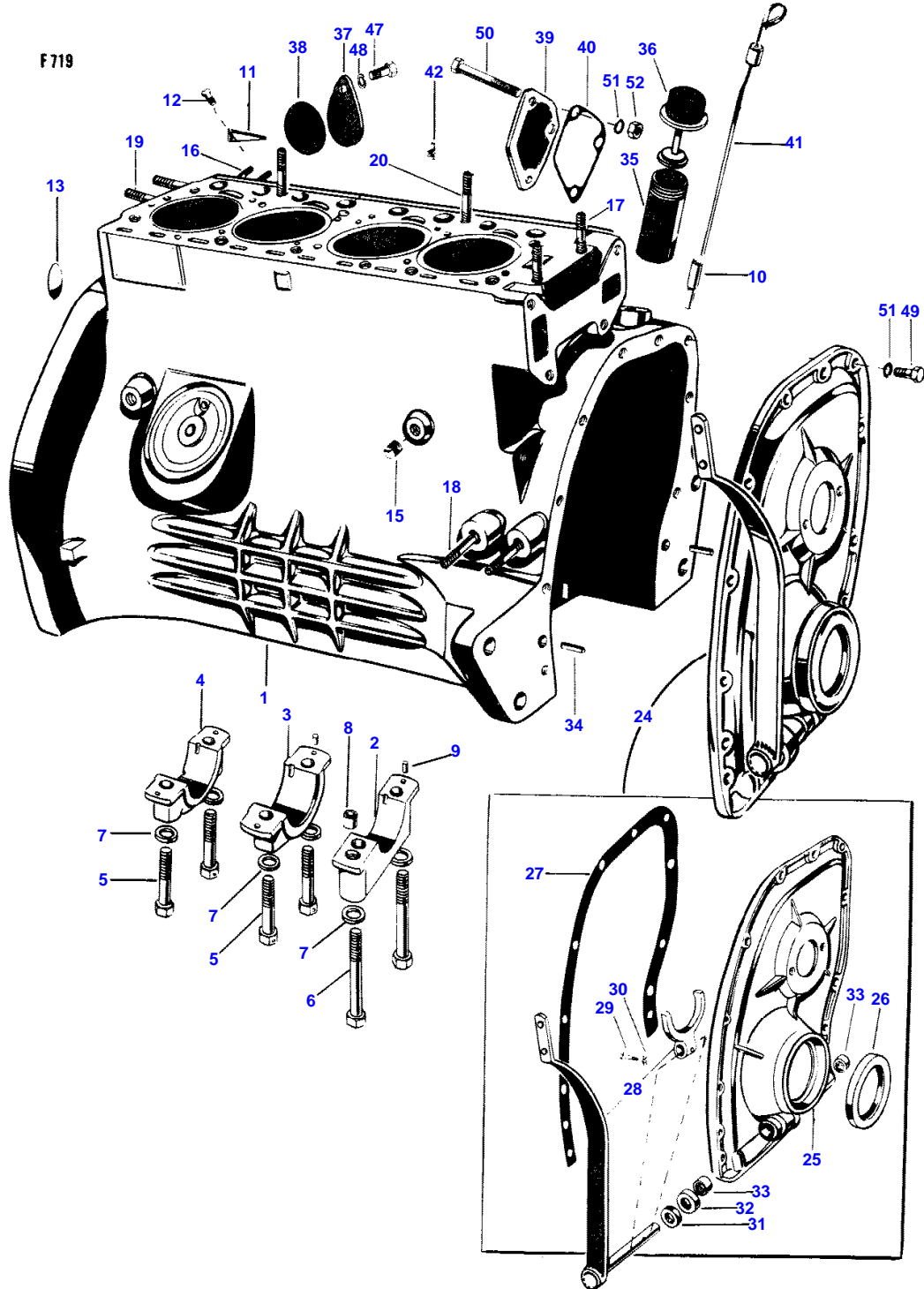
TABLE OF CONTENT

00

ACCESSORIES - 2-1/2 X 8 PULL BEHIND CYLINDERS	218
ACCESSORIES - HYDRAULIC BREAKAWAY COUPLING (DOUBLE)	220
ACCESSORIES - SWINGING DRAWBAR (677300)	222
ACCESSORIES - LEVELING BOX (677249-250)	224
ACCESSORIES - BELT PULLEY AND DRIVE (677160)	226
ACCESSORIES - ELECTRICAL ACCESSORIES	228
ACCESSORIES - PRE-CLEANER KIT I (677325)	230
ACCESSORIES - ENGINE HEATER (677399)	232

2

CYLINDER BLOCK AND TIMING GEAR COVER



1st Print

651 108 M93 (Issue 1) 12/65

MASSEY FERGUSON

MF SUPER 90 TRACTOR - 651108EA

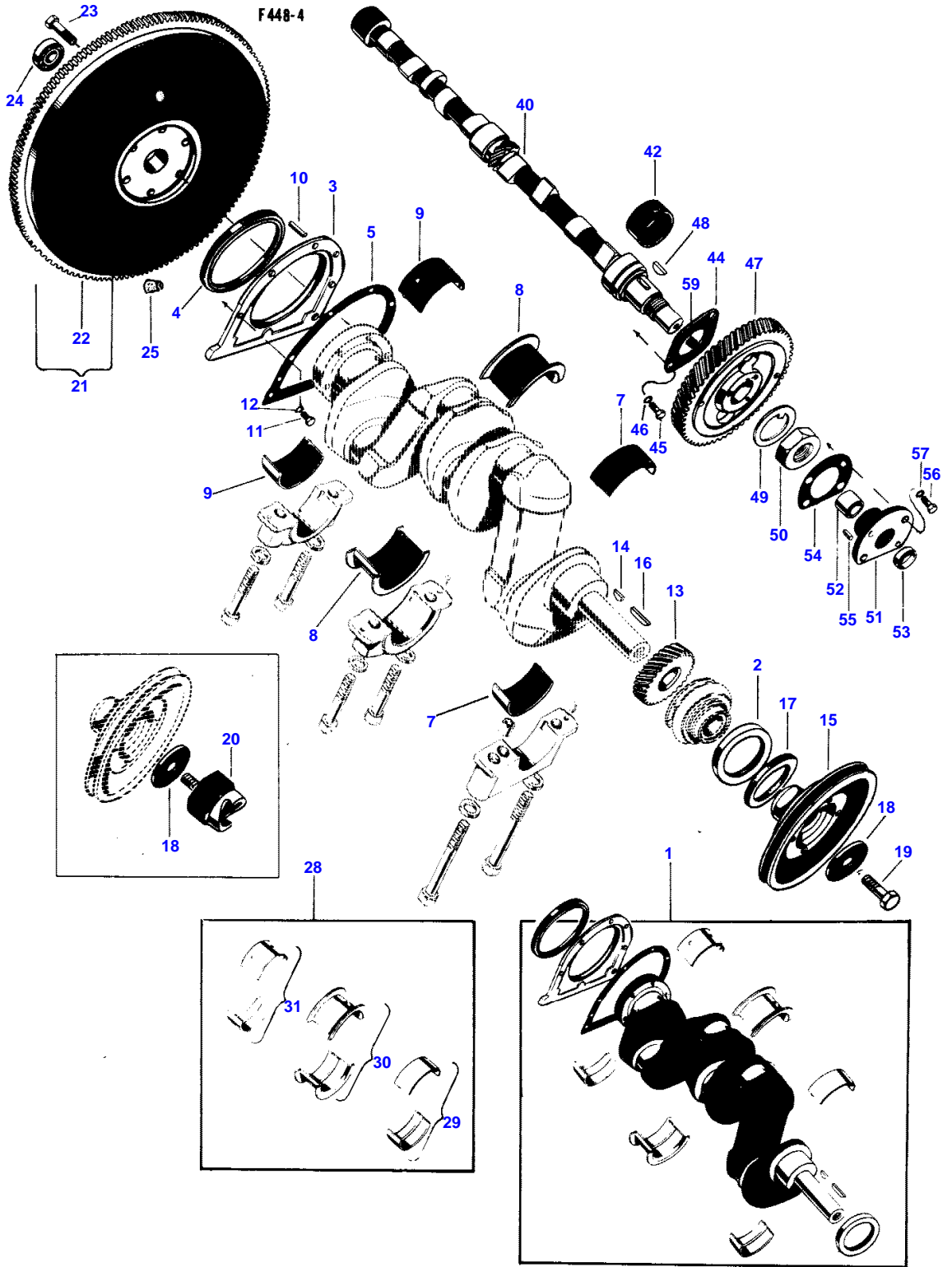
651108EA

CYLINDER BLOCK AND TIMING GEAR COVER - GAS AND L.P.

2

Item	Part Number	Qty	Description	Comments
	1754961M91	1	Block	GAS AND L.P. GAS INCL. STRIPPED BLOCK, CONNECTING RODS AND BEARINGS , CRANKSHAFT AND BEARINGS, PISTON ASSEMBLY, OIL PAN, TIMING GEARS AND CAMSHAFT
	1024478M91	1	Block	L.P. INCL. STRIPPED BLOCK, CONNECTING RODS AND BEARINGS , CRANKSHAFT AND BEARINGS, PISTON ASSEMBLY, OIL PAN, TIMING GEARS AND CAMSHAFT
1	1754962M92	1	Block	
2	1005847M1	1	Cap	
3	1005848M1	1	Cap	
4	1005849M1	1	Cap	
5	760398M1	4	Bolt	
6	761533M1	2	Bolt	
7	1007519M1	6	Washer	
8	0171170A	1	Dowel	
9	760402M1	5	Pin	
10	017595A	1	Support	
11	1754747M1	1	Pointer	
12	1754748M1	2	Screw	
13	014708X	1	Plug	
	1000148M1	2	Plug	
15	022769X	1	Plug	
16	001958X	2	Stud	
17	015247X	2	Stud	
18	1751908M1	2	Stud	
19	1754786M1	2	Stud	
20	1006416M1	2	Stud	
24	1754746M91	1	Kit, Cover	
25	1754577M1	1	Cover	
26	017627A	1	Seal	
27	1754578M1	1	Gasket	
28	1754579M91	1	Kit, Arm	
29	1753829M1	1	Screw	
30	1753828M1	1	Washer	
31	1005973M1	1	Seal	
32	018567X	1	Seal	
33	831535M1	2	Bearing	
34	191314M1	2	Centraliser	
35	1017936M1	1	Body	
36	015345A	1	Kit, Cap	
37	1754586M1	1	Cover	
38	1754979M1	1	Gasket	
39	1751846M1	1	Cover	
40	191469M1	1	Gasket	
41	1754585M1	1	Indicator	
42	763716M1	1	Cock	
47	353666X1	AR	Screw Unc	
48	353441X1	AR	Lock Washer	
49	1754906M1	AR	Bolt	
50	029937X	AR	Bolt	
51	353434X1	AR	Lock Washer	
52	355566X1	AR	Nut Unc	

4 CRANKSHAFT AND BEARINGS, FLYWHEEL, CAMSHAFT AND TIMING GEARS



1st Print

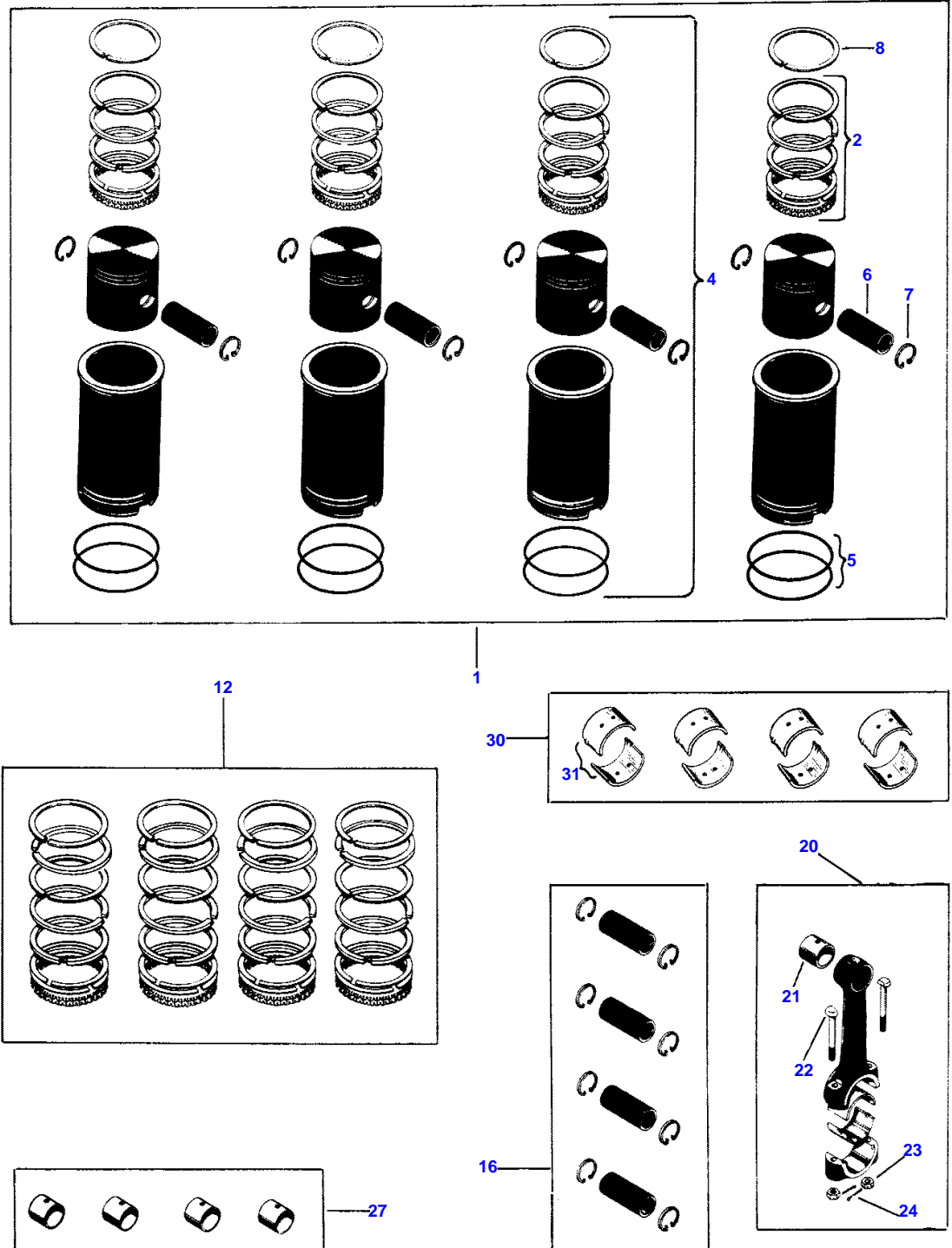
651 108 M93 (Issue 1) 12/65

Item	Part Number	Qty	Description	Comments
				GAS AND L.P.
1	830966M91	1	Kit, Crankshaft	
2	017627A	1	Seal	
3	1754822M91	1	Retainer	
4	1020124M1	1	Seal	
5	1005883M1	1	Gasket	
	830914M91	1	Insert	SEE ITEM 28
7	1754692M91	1	Kit	INSERT
8	1754696M91	1	Kit	INSERT
9	1754700M91	1	Kit	INSERT
10	760402M1	2	Pin	
11	353677X1	7	Screw Unc	
12	353446X1	7	Lock Washer	
13	1754555M1	1	Gear	
	1754713M1	AR	Gear	
	1754715M1	AR	Gear	
	1754714M1	AR	Gear	
	1754716M1	AR	Gear	
14	355468X1	1	Key Door	
15	1754580M1	1	Pulley	
16	1754583M1	1	Key	
17	760520M1	1	Seal	
18	1754582M1	1	Washer	
19	353609X1	1	Bolt	(D)
20	1754581M1	1	Jaw	(C)
21	1754588M91	1	Flywheel Assy.	(A)
22	1754589M1	1	Gear	
23	1754590M1	6	Bolt	(A)
24	832960M2	1	Bearing	(A)
25	017406X	AR	Plug	
28	830915M91	AR	Insert	
29	1754693M91	1	Kit	INSERT
30	1754697M91	1	Kit	INSERT
31	1754701M91	1	Kit	INSERT
28	830916M91	AR	Insert	
29	1754694M91	1	Kit	INSERT
30	1754698M91	1	Kit	INSERT
31	1754702M91	1	Kit	INSERT
28	830917M91	AR	Kit	INSERT
29	1754695M91	1	Kit	INSERT
30	1754699M91	1	Kit	INSERT
31	17547003M91	1	Kit	INSERT
40	1754904M1	1	Camshaft	
42	1754553M1	1	Bush	See Page - Reference Number 830933M91
44	1006802M1	1	Plate	
45	353690X1	2	Screw Unc	
46	022464X	2	Washer	
47	1028482M1	1	Gear	
	1028483M1	1	Gear	
	1028485M1	1	Gear	
	1028484M1	1	Gear	
	1028486M1	1	Gear	
48	002169X	1	Key	
49	1753793M1	1	Washer	
50	1753794M1	1	Nut	
51	1754142M91	1	Kit, Support	
52	1753832M1	1	Bush	See Page - Reference Number 830933M91
53	1753833M1	1	Plug	
54	1753831M1	1	Gasket	
55	760402M1	2	Pin	
56	353691X1	2	Screw Unc	
57	353434X1	2	Lock Washer	
	830933M91	1	Bush	INCL. 1 - 1754553M1 & 1 - 1753832M1
59	355542X1	1	Plug	(A) SEE PAGE 138 FOR MULTI-POWER TRANSMISSION FLYWHEEL (C) USED ENGINE SERIAL NO. 3117 AND UP. (D) USED PRIOR TO ENGINE SERIAL NO. 3117.

6

PISTONS AND RINGS, CONNECTING RODS AND BEARINGS

F364-53



68-75

651 108 M93 (Issue 2) 9/68

MASSEY FERGUSON

MF SUPER 90 TRACTOR - 651108EA

651108EA

PISTONS, RINGS, CONNECTING RODS AND BEARINGS - GAS AND L.P.

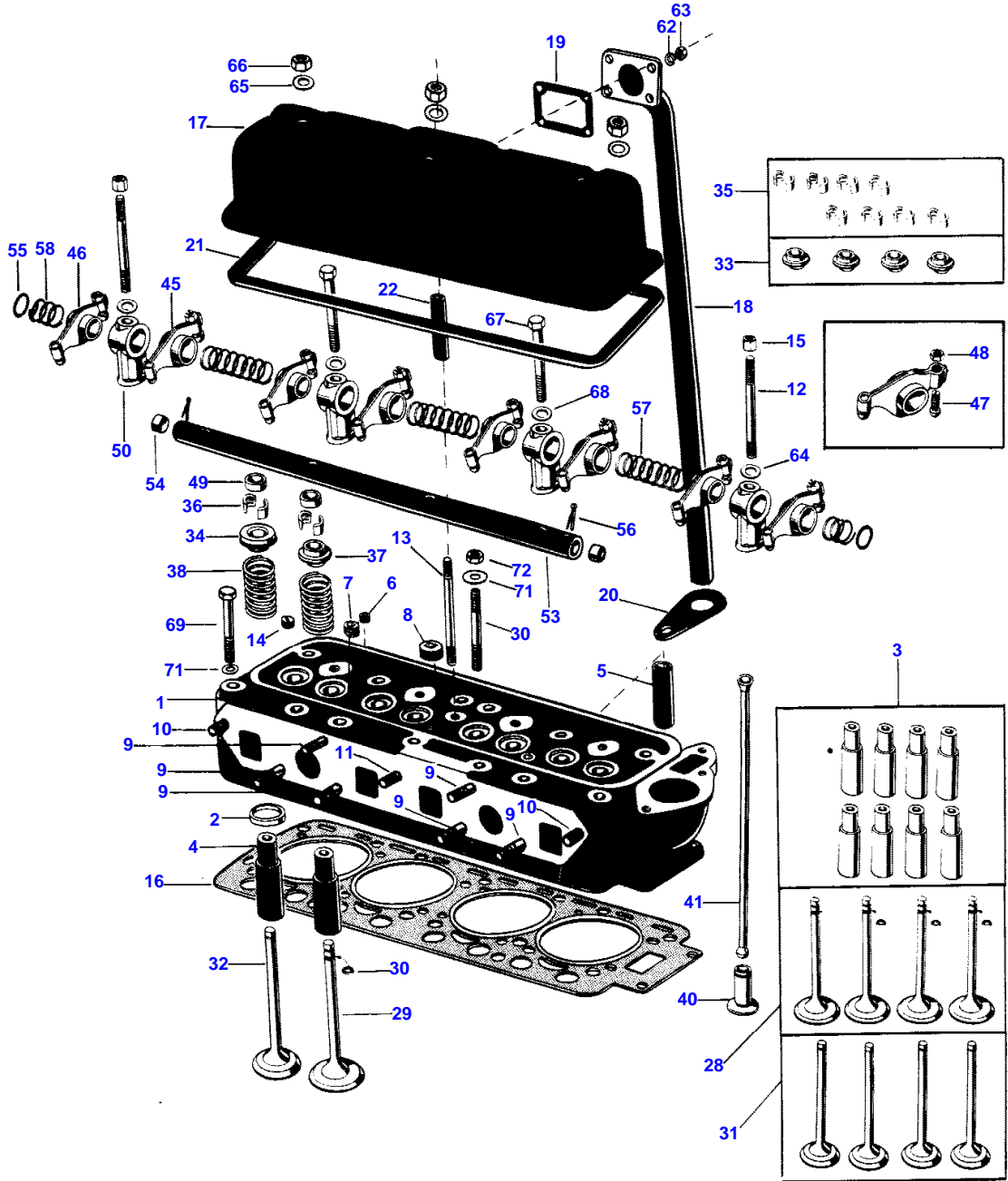
6

Item	Part Number	Qty	Description	Comments
				GAS AND L.P.
1	830967M92	1	Piston	GAS
2		1	Ring	SEE ITEM 12
	830971M91	1	Shim	INCL. 6 SHIMS .0015" AND 6 SHIMS .003"
4	1754963M92	4	Kit, Piston	INCLUDES RINGS
5	1005853M1	2	Ring	
6	1005856M1	1	Pin	
7	017675A	2	Ring	
8	1754903M1	1	Insert	Top
1	835518M92	1	Piston	L.P.
2		1	Ring	SEE ITEM 12
	830971M91	1	Shim	INCL. 6 SHIMS .0015" AND 6 SHIMS .003"
4	1017246M92	4	Kit, Piston	INCLUDES RINGS
5	1005853M1	2	Ring	
6	1005856M1	1	Pin	
7	017675A	2	Ring	
8	1754903M1	1	Insert	Top
12	836129M91	AR	Ring	
16	841018M91	AR	Pin-Ring Assy	
	841019M91	AR	Pin-Ring Assy	
	841020M91	AR	Pin-Ring Assy	
20	1754704M91	4	Kit, Rod	
21	1005861M1	1	Bush	
22	017609A	2	Bolt	
23	353925X1	2	Nut Unf	
24	354048X1	2	Pin	
27	841021M91	AR	Bush	
30	830922M91	1	Insert	
31	1754705M91	4	Kit	INSERT
30	830923M91	1	Insert	
31	1754706M91	4	Kit	INSERT
30	830924M91	1	Insert	
31	1754707M91	4	Kit	INSERT
30	830925M91	1	Insert	
31	1754708M91	4	Kit	INSERT

8

CYLINDER HEAD AND COVER, VALVES AND ROCKER ARMS

F446-5



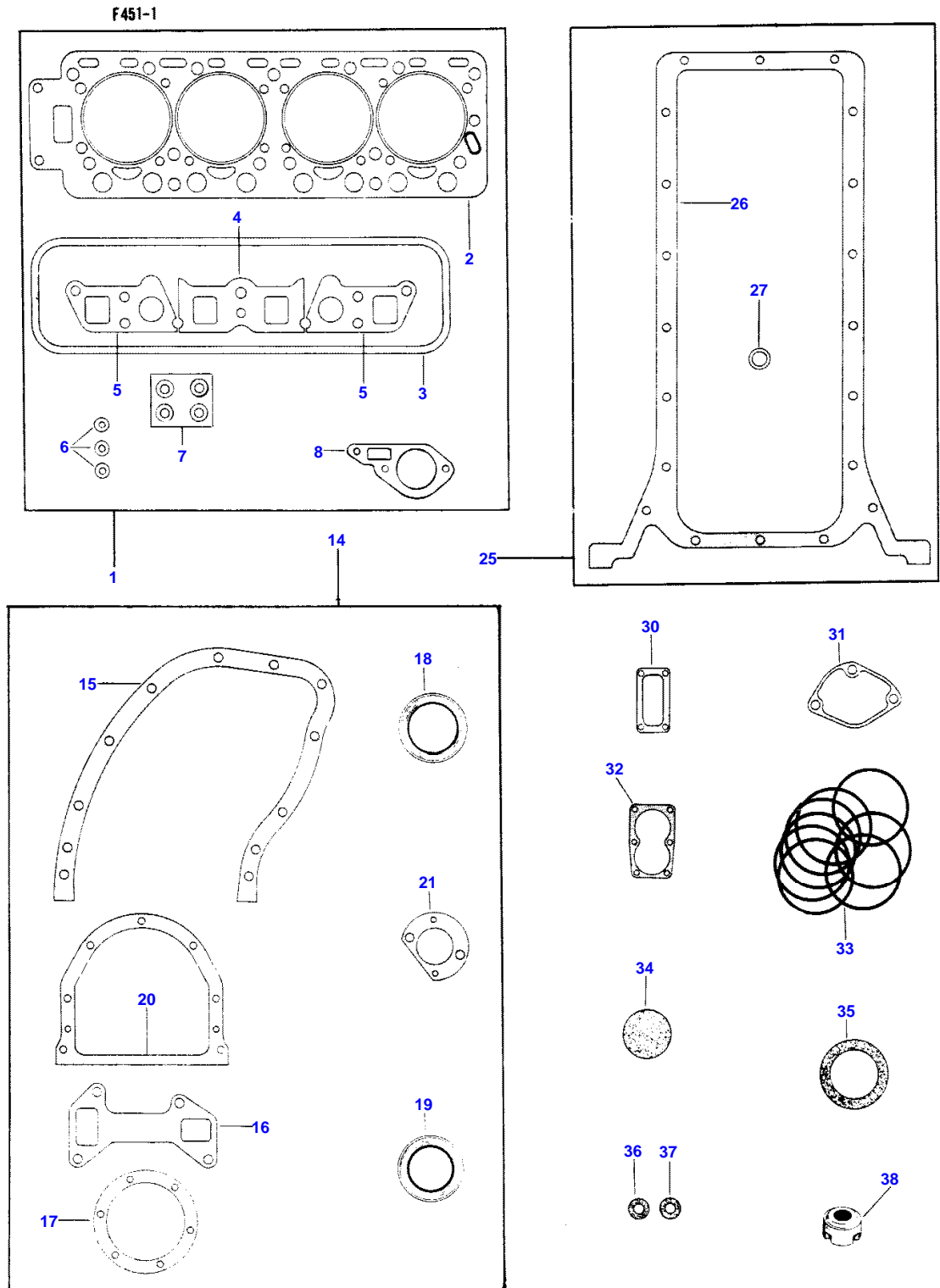
1st Print

651 108 M93 (Issue 1) 12/65

Item	Part Number	Qty	Description	Comments
				GAS AND L.P.
1	1754691M91	1	Head	GAS
	1754898M91	1	Head	L.P.
2	1010419M1	4	Insert	GAS
	1010462M1	4	Insert	L.P.
3	830935M91	1	Guide	
4	1754827M1	8	Guide	
5	1007488M1	8	Tube	
6	355542X1	1	Plug	
7	022771X	2	Plug	
8	355543X1	1	Plug	
9	017737A	6	Stud	
10	1005913M1	2	Stud	
11	1005914M1	1	Stud	
12	1754751M1	2	Stud	
13	1754750M1	1	Stud	
14	017617A	1	Plug	
15	1006812M1	2	Nut	
16	1754567M1	1	Gasket	
17	1754564M91	1	Kit, Cover	
18	1754565M91	1	Breather	
19	1750006M1	1	Gasket	
20	1754566M1	1	Bracket	
21	1005929M1	1	Gasket	
22	1754905M1	1	Spacer	
29	1754826M1	4	Valve	GAS
30	1005917M1	4	Seal	
28		1	Kit, Valve	L.P.
				ORDER 1754900M1
29	1754900M1	4	Valve	
31		1	Kit, Valve	ORDER (4) 1009598M91
32	1009598M1	4	Valve	
33		1	Kit, Retainer	GAS
				ORDER (4) 1005502M91
34	1005502M91	4	Cap	
35	841375M91	1	Lock	
36		16	Lock	ORDER 841375M91
37	1005920M1	4	Retainer	GAS
	1005920M1	8	Retainer	L.P.
39	1010268M1	8	Spring	
40	1007486M1	8	Tappet	
41	1005942M1	8	Rod	
45	1754562M91	4	Arm	INCL. ITEMS 47 AND 48 Right Hand
46	1754563M91	4	Arm	INCL. ITEMS 47 AND 48 Left Hand
47	1005935M1	1	Screw	
48	353916X1	1	Nut Unf	
49	1005937M1	8	Socket	
50	760182M1	4	Support	
53	1018397M1	1	Shaft	
54	1006412M1	2	Plug	
55	1006411M1	2	Washer	
56	354063X1	2	Pin	
57	760204M1	3	Spring	
58	760154M1	2	Spring	
62	353441X1	AR	Lock Washer	
63	355564X1	AR	Nut Unc	
64	353756X1	AR	Washer	
65	011277X	AR	Washer	
66	358658X1	AR	Nut	
67	016312X	AR	Bolt	
68	353757X1	AR	Washer	
69	375005X1	AR	Screw	
70	375006X1	AR	Stud	
71	365381X1	AR	Washer	
72	355566X1	AR	Nut Unc	

10

ENGINE GASKET SETS



68-75

651 108 M93 (Issue 2) 9/68

Item	Part Number	Qty	Description	Comments
				GAS AND L.P. SEE NOTE "A"
1	836316M91	1	Gasket	
2	1754567M1	1	Gasket	
3	1005929M1	1	Gasket	
4	1754569M1	1	Gasket	
5	1754570M1	2	Gasket	
6	011277X	3	Gasket	
7	1005917M1	4	Seal	
8	760113M1	1	Gasket	
14	836318M91	1	Gasket	
15	1754578M1	1	Gasket	
16	1754576M1	1	Gasket	
17	760237M1	1	Gasket	
18	017627A	1	Seal	
19	1020124M1	1	Seal	
20	1005883M1	1	Gasket	
21	1753831M1	1	Gasket	
25	836319M91	1	Gasket	
26		1	Gasket	ORDER 836319M91, GASKET SET
27	1750118M1	1	Gasket	
30	1750006M1	1	Gasket	
31	191469M1	1	Gasket	
32	1005959M1	1	Gasket	
33	1005853M1	8	Packing	
34	1754979M1	1	Gasket	
35	760520M1	1	Seal	
36	018567X	1	Seal	
37	1005973M1	1	Seal	
38	1750084M91	1	Bush	

(A)
INDIVIDUAL GASKET NUMBERS INCLUDED IN KITS MAY DIFFER FROM GASKET NUMBERS SHOWN ON OTHER PAGES FOR THIS ENGINE. THESE GASKETS ARE SERVICE REPLACEMENTS FOR THEM.

Buy Now



Our support email:

ebooklibonline@outlook.com