

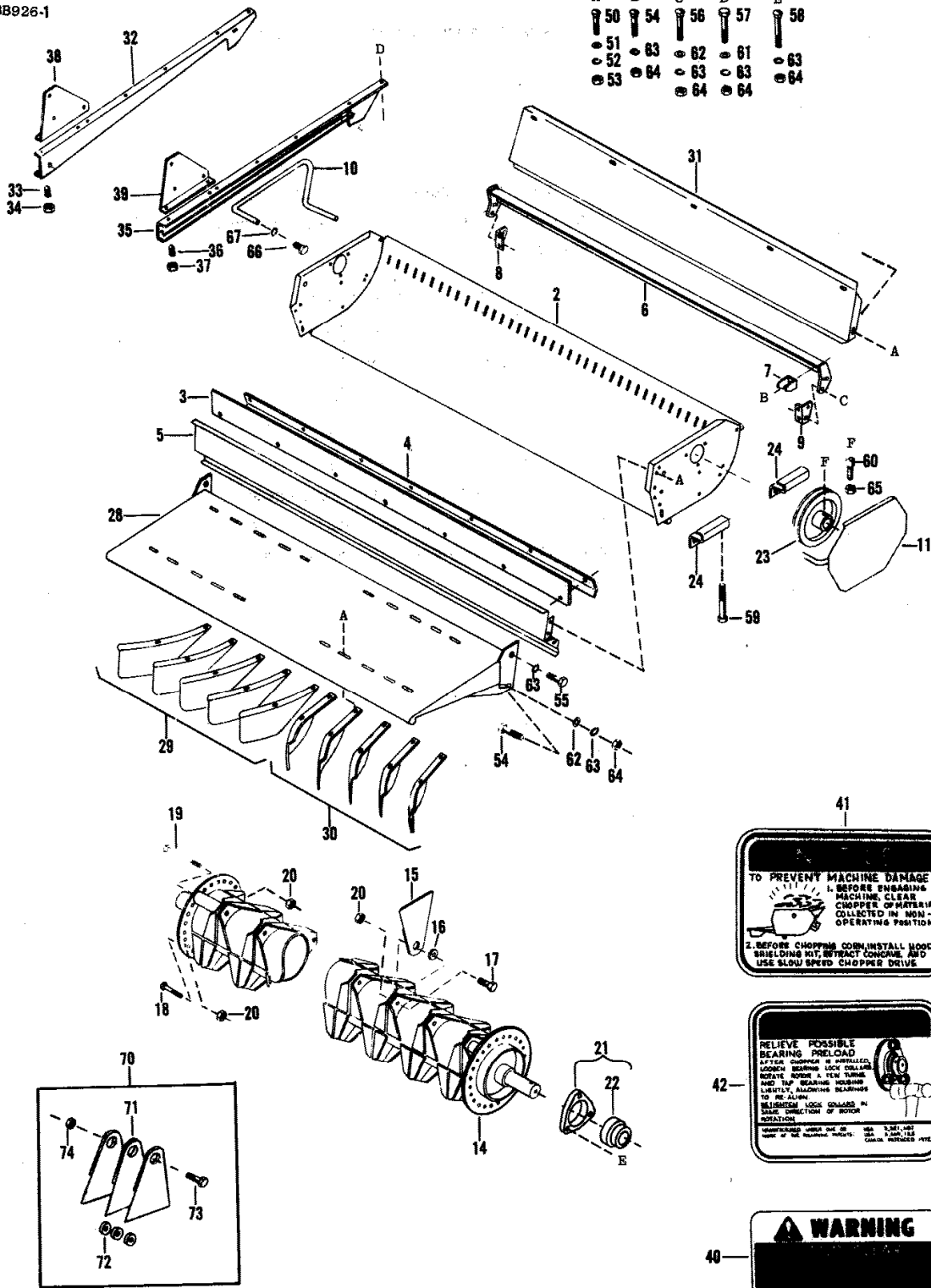
Page Title	Page Number
HOUSING, ADAPTER AND ROTOR - MF750 COMBINE SERIAL NUMBER 169611018 AND UP	2
HOUSING, ADAPTER AND ROTOR - USED PRIOR TO MF 750 COMBINE SERIAL NUMBER 1696110 18	5
HOUSING, ADAPTER AND ROTOR - USED LATE PRODUCTION 740E COMBINE	6
HOUSING, ADAPTER AND ROTOR - USED ALL EARLY PRODUCTION 740E COMBINES	9
HOUSING, ADAPTER AND ROTOR - MF 760 COMBINE	10
STRAW CHOPPER DRIVE	13
STRAW CHOPPER DRIVE - USED PRIOR TO 750 COMBINE SERIAL NUMBER 169609674	17
STRAW CHOPPER DRIVE - MF 751 COMBINE	21
REAR DRIVE SHIELDS - USED 750 COMBINE SERIAL NUMBER 169609674 AND UP	25
CHOPPER ALARM SYSTEM - USED ALL COMBINES	26
CORN KIT - WITH SLOW DOWN	29
HOUSING, ADAPTER AND ROTOR - MF 550 COMBINE	30
STRAW CHOPPER DRIVE - MF 550 COMBINE	33
SHIELDS AND SENSOR - MF 550 COMBINE	34
CORN KIT - W/SLOW DOWN	37
HOUSING, ADAPTER AND ROTOR - 540 COMBINE	38
STRAW CHOPPER DRIVE - MF 540 COMBINE	41
CORN KIT - W/SLOW DOWN	42
HOUSING, ADAPTER AND ROTOR	45
HOUSING, ADAPTER AND ROTOR - USED 510 COMBINE SERIAL NUMBER 12014509 TO 1201316 90	46
HOUSING, ADAPTER AND ROTOR - USED 510 COMBINE SERIAL NUMBER 12019156 TO 1201145 09	49
STRAW CHOPPER DRIVE - USED 510 COMBINE SERIAL NUMBER 12019156 AND UP	50
HOUSING, ADAPTER AND ROTOR - USED 510 COMBINE SERIAL NUMBER 12016018 TO 1201915 6	53
HOUSING, ADAPTER AND ROTOR - USED PRIOR TO 510 COMBINE SERIAL NUMBER 12016018	54
STRAW CHOPPER DRIVE - USED PRIOR TO 510 COMBINE SERIAL NUMBER 12019156	57
HOUSING, ADAPTER AND ROTOR - USED 510 RICE COMBINE ONLY, SEE NOTE A)	58
STRAW CHOPPER DRIVE - USED 510 RICE COMBINE ONLY, SEE NOTE A)	61
HOUSING, ADAPTER AND ROTOR - USED 410 COMBINE SERIAL NUMBER 120015177 AND UP	62
HOUSING, ADAPTER AND ROTOR - USED 410 COMBINE SERIAL NUMBER 120011753 TO 120015 177	65
STRAW CHOPPER DRIVE - USED 410 COMBINE SERIAL NUMBER 120011753 AND UP	66
HOUSING, ADAPTER AND ROTOR - USED 410 RICE COMBINE ONLY, SEE NOTE A	69
STRAW CHOPPER DRIVE - USED PRIOR TO 410 COMBINE SERIAL NUMBER 120011753	70
HOUSING, ADAPTER AND ROTOR - USED LATE PRODUCTION 300 COMBINE AFTER SERIAL NUMB ER 116711450	73
HOUSING, ADAPTER AND ROTOR - USED EARLY PRODUCTION 300 COMBINE AFTER SERIAL NUM BER 116711450	74
STRAW CHOPPER DRIVE - USED 300 COMBINE SERIAL NUMBER 116711450 AND UP	77
HOUSING, ADAPTER AND ROTOR	78
STRAW CHOPPER DRIVE	81
STRAW CHOPPER DRIVE - USED 300 COMBINE SERIAL NUMBER 11672253 TO 1167571 7	82
STRAW CHOPPER DRIVE - USED PRIOR TO 300 COMBINE SERIAL NUMBER 11672253	85
HOUSING, ADAPTER AND ROTOR - USED 205 COMBINE SERIAL NUMBER 13981527 AND UP	86
HOUSING, ADAPTER AND ROTOR - USED PRIOR TO 205 COMBINE SERIAL NUMBER 13981527	89
STRAW CHOPPER DRIVE - 205 COMBINE	90
HOUSING, ADAPTER AND ROTOR - USED 405 COMBINE SERIAL NUMBER 13301090 AND UP	93
HOUSING, ADAPTER AND ROTOR - USED 405 COMBINE SERIAL NUMBER 13300486 TO 1330109 0	94
STRAW CHOPPER DRIVE - USED 405 COMBINE SERIAL NUMBER 13300486 AND UP	97
HOUSING, ADAPTER AND ROTOR - USED PRIOR TO 405 COMBINE SERIAL NUMBER 13300486	98
STRAW CHOPPER DRIVE	101
CORN KIT - USED 300, 410 AND 510 COMBINES	102
WARNING KIT - USED 205, 405, 300, 410 AND 510 COMBINES	105

# MF 760 STRAW CHOPPER (US) - 651243EA

2

## HOUSING, ADAPTER AND ROTOR

BB926-1



41

**TO PREVENT MACHINE DAMAGE**

1. BEFORE OVERHAULING MACHINE, CLEAR CHOPPER OF MATERIAL COLLECTED IN HOUSING OPERATING POSITION

2. BEFORE CHOPPING COB, INSTALL HOOD SWELDING HIT, RETRACT CONSOLE, AND USE SLOW SPEED CHOPPER DRIVE

42

**RELIEVE POSSIBLE BEARING PRELOAD**

AFTER COLLAR IS INSTALLED, LOOSEN BEARING LOCK COLLAR, ROTATE ROTOR A FEW THIRDS AND TAP BEARING HOUSING LIGHTLY, BEARING BECOMES TO RE-ALIGN. RE-TIGHTEN LOCK COLLAR IN SAME DIRECTION OF ROTOR ROTATION.

SEE 7-261, USE UNIFORMED WHEN OUT OF CASE. 7-261, 7-22 CASE, 7-261, 7-22 CASE, 7-261, 7-22 CASE, 7-261, 7-22 CASE.

40

**WARNING**

1st Print

651 243 M95 (Issue 1) 4/79

Item	Part Number	Qty	Description	Comments
				MF750 COMBINE SERIAL NUMBER 169611018 AND UP USED ALL MF751 COMBINES MF760 COMBINE SERIAL NUMBER 174606028 AND UP
	259501M91	1	Straw Chopper	(A, B, C)
	265450M91	1	Straw Chopper	(A, D)
2	1048577M91	2	Housing	(B, C)
	1048593M91	1	Housing	(D)
3	1048578M1	1	Filler	(B, C)
	1048594M1	1	Gasket	(D)
4	1051072M1	1	Bar	(B, C)
	1051073M1	1	Bar	(D)
5	1048580M1	1	Panel	(B, C)
	1048597M1	1	Panel	(D)
6	1048581M91	1	Concave	(B, C)
	1048595M91	1	Plate	(D)
7	1041155M1	17	Tooth	(B, C)
	1041155M1	17	Tooth	(D)
8	1048582M1	1	Bracket	Left Hand (B, C, D)
9	1048583M1	1	Bracket	Right Hand (B, C, D)
10	1040626M1	1	Bar	Left Hand (B, C, D)
11	1045974M91	1	Cowl	Right Hand (B, C, D)
14	1040785M91	1	Rotor	INCL. REF. 15-20 (B, C)
14	1039461M91	1	Rotor	(D)
15	1039462M1	35	Blade	Not serviced, order 837030M92 See Page - Reference Number 70 (B, C)
15	1039462M1	41	Blade	Not serviced, order 837030M92 See Page - Reference Number 70 (D)
16	1033058M2	35	Bush	(B, C)
	1033058M2	35	Bush	(D)
17	353538X1	31	Screw Unf	(B, C)
	353538X1	31	Screw Unf	(D)
18	353550X1	2	Bolt Unf	(B, C, D)
19	354513X1	2	Bolt Unf	(B, C, D)
20	195586M1	35	Nut	(B, C)
	195586M1	35	Nut	(D)
21	1048584M91	2	Bearing	(B, C, D)
22	834066M1	1	Bearing Assy	(B, C, D)
23	1048585M1	1	Pulley	(B, C, D)
24	1048586M1	4	Bearer	(B, C, D)
28	1048588M91	1	Plate	(B, C)
	1048596M91	1	Plate	(D)
29	1036953M1	5	Fin	Left Hand (B, C)
29	1036953M1	5	Fin	Left Hand (D)
30	1036952M1	5	Fin	Left Hand (B, C)
30	1036952M1	5	Fin	Right Hand (D)
31	1043605M1	1	Chute	(B, C)
	1043604M1	1	Plate	(D)
	1053584M91	1	Slide	Left Hand (B, C, D)
32	1048592M91	1	Plate	(B, C, D)
33	354126X1	1	Screw Unc	(B, C, D)
34	355564X1	1	Nut Unc	(B, C, D)
	1053583M91	1	Slide	Right Hand (B, C, D)
35	1048591M91	1	Plate	(B, C, D)
36	354126X1	1	Screw Unc	(B, C, D)
37	355564X1	1	Nut Unc	(B, C, D)
38	1044492M1	1	Gusset	Left Hand (B, C, D)

MASSEY FERGUSON

MF 760 STRAW CHOPPER (US) - 651243EA

651243EA

HOUSING, ADAPTER AND ROTOR - MF750 COMBINE SERIAL NUMBER 169611018 AND UP

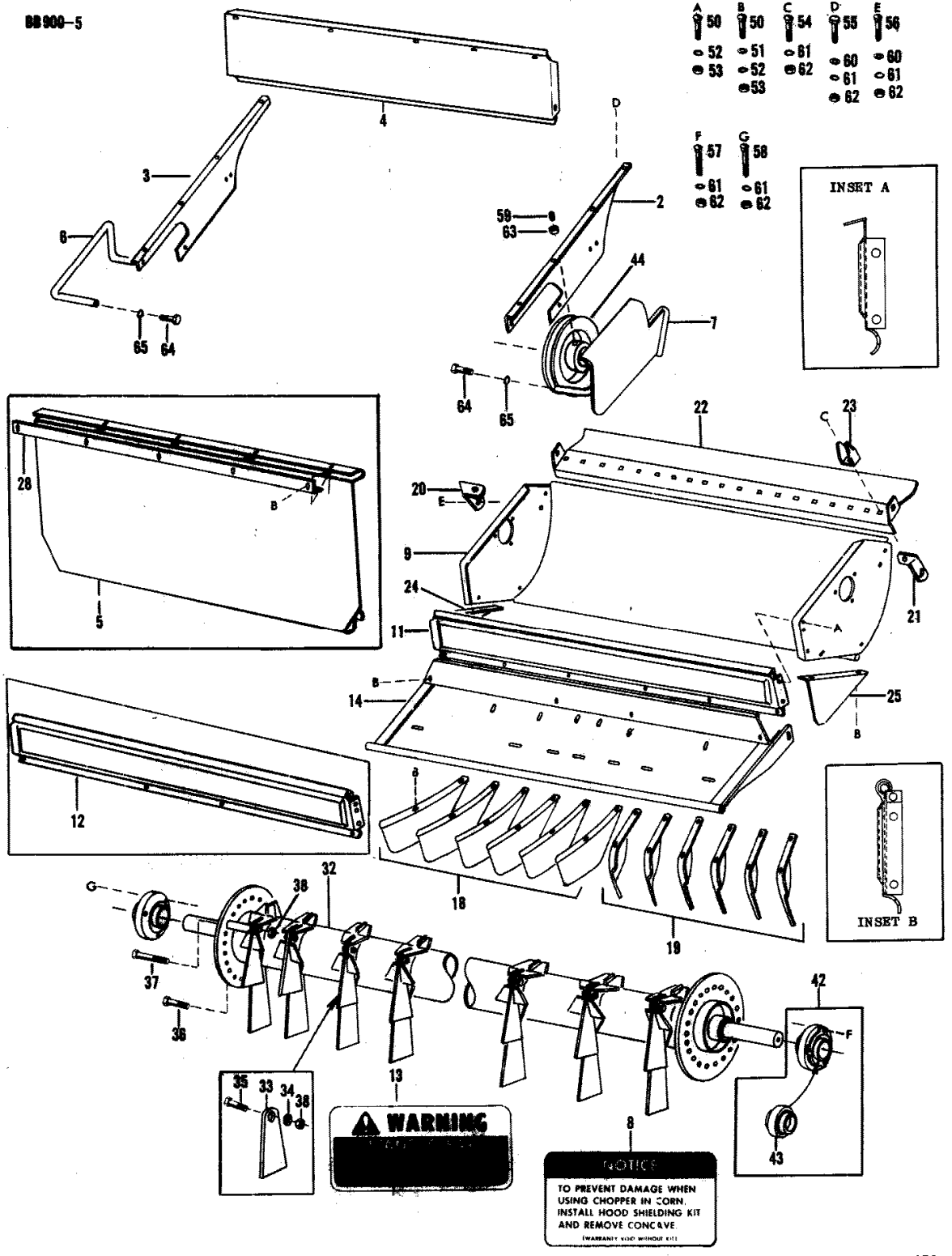
2

Item	Part Number	Qty	Description	Comments
39	1044493M1	1	Gusset	Right Hand (B, C, D)
40	1050047M1	3	Decal	(B, C, D)
41	1050963M1	1	Decal	(B, C, D)
42	1050965M1	1	Decal	(B, C, D)
	353665X1	AR	Screw Unc	(B, C, D)
	353441X1	AR	Lock Washer	1/4" (B, C, D)
	355564X1	AR	Nut Unc	(B, C, D)
50	368196X1	AR	Bolt Unc	(B, C, D)
51	353755X1	AR	Washer	5/16" (B, C, D)
52	353446X1	AR	Lock Washer	5/16" (B, C, D)
53	355565X1	AR	Nut Unc	(B, C, D)
54	365416X1	AR	Bolt	(B, C, D)
55	353689X1	AR	Screw Unc	(B, C, D)
56	364964X1	AR	Bolt Unc	(B, C, D)
57	353691X1	AR	Screw Unc	(B, C, D)
58	363770X1	AR	Bolt Unc	(B, C, D)
59	354264X1	AR	Bolt Unc	(B, C, D)
60	357751X1	AR	Screw Unc	(B, C, D)
61	353756X1	AR	Washer	3/8" (B, C, D)
62	355619X1	AR	Washer	3/8" (B, C, D)
63	353434X1	AR	Lock Washer	3/8" (B, C, D)
64	355566X1	AR	Nut Unc	(B, C, D)
65	365758X1	AR	Nut	(B, C, D)
66	354404X1	AR	Bolt	(B, C, D)
67	353439X1	AR	Lock Washer	1/2" (B, C, D)
70	837030M92	AR	Knife	(B, C, D)
71	1039462M1	3	Blade	Not serviced, order 837030M92 (B, C, D)
72	1033058M2	3	Bush	(B, C, D)
73	353538X1	3	Screw Unf	(B, C, D)
74	195586M1	3	Nut	(B, C, D)

(A)  
PART NUMBER SHOWN FOR REFERENCE ONLY  
(B)  
MF 750  
(C)  
MF 751  
(D)  
MF 760

HOUSING, ADAPTER AND ROTOR

5



1st Print

651 243 M95 (Issue 1) 4/79

Item	Part Number	Qty	Description	Comments
				USED PRIOR TO MF 750 COMBINE SERIAL NUMBER 1696110 18
				USED PRIOR TO MF 760 COMBINE SERIAL NUMBER 1746060 28
	258521M91	1	Straw Chopper	(A, F)
	271310M91	1	Straw Chopper	(A, G)
2	1039449M2	1	Panel	Right Hand (F, G)
3	1039450M2	1	Panel	Left Hand (F, G)
4	1043605M1	1	Chute	(B, F)
	1043604M1	1	Plate	(B, G)
5		1	Chute	Not serviced, order 1043605M1 (C, F)
5		1	Chute	Not serviced, order 1043604M1 (C, G)
6	1040626M1	1	Bar	Left Hand (F, G)
7	1040528M91	1	Bar	Right Hand (F, G)
8	1050962M1	1	Decal	(F, G)
9	1041964M91	1	Housing	(F)
	1041152M91	1	Frame	(G)
11	1043606M92	1	Panel	INCL. 1043605M1 INCL. REF. 13 (B, D, F)
11	1043599M92	1	Panel	INCL. 1043604M1 INCL. REF. 13 (B, D, G)
12		1	Panel	INCL. REF 5 (1ST) Not serviced, order 1043606M92 (C, E, F)
12		1	Panel	INCL. REF. 5 (2ND) Not serviced, order 1043599M92 (C, E, G)
13	1050047M1	1	Decal	(F, G)
14	1040780M91	1	Board	INCL. REF. 1-13 (F)
14	1040625M91	1	Plate	INCL. REF. 1-13 (G)
	1050047M1	1	Decal	See Page - Reference Number 13 (F, G)
18	1036953M1	5	Fin	Left Hand (F)
18	1036953M1	6	Fin	Left Hand (G)
19	1036952M1	5	Fin	Right Hand (F)
19	1036952M1	6	Fin	Right Hand (G)
20	1041156M1	1	Bearer	Left Hand (F, G)
21	1041157M1	1	Bearer	Right Hand (F, G)
22	1041965M1	1	Plate	(F, G)
23	1041155M1	16	Tooth	(F)
	1041155M1	20	Tooth	(G)
24	1040527M1	1	Cowl	Left Hand (F, G)
25	1040526M1	1	Cowl	Right Hand (F, G)
	1050047M1	1	Decal	See Page - Reference Number 13 (F, G)
28		1	Angle	Not serviced, order 1043605M1 (C, F)
28		1	Angle	Not serviced, order 1043604M1 (C, G)
32	1040785M91	1	Rotor	INCL. REF. 33-38 (F)
33		35	Blade	Not serviced, order 837030M92 See Page - Reference Number 3/70 (F)

MASSEY FERGUSON

MF 760 STRAW CHOPPER (US) - 651243EA

651243EA

HOUSING, ADAPTER AND ROTOR - USED PRIOR TO MF 750 COMBINE SERIAL NUMBER 1696110 18

5

Item	Part Number	Qty	Description	Comments
33		41	Blade	Not serviced, order 8370030M92 See Page - Reference Number 3/70 (G)
34	1033058M2	34	Bush	(F)
34	1033058M2	41	Bush	(G)
35	353538X1	31	Screw Unf	(F, G)
36	353550X1	2	Bolt Unf	(F, G)
37	354513X1	2	Bolt Unf	(F, G)
38	195586M1	35	Nut	(F)
38	195586M1	41	Nut	(G)
42	1041815M91	2	Bearing Carrier	(F, G)
43	834066M1	1	Bearing Assy	(F, G)
44	1041158M1	1	Pulley	(F, G)
50	368196X1	AR	Bolt Unc	(F, G)
51	353755X1	AR	Washer	5/16" (F, G)
52	353446X1	AR	Lock Washer	5/16" (F, G)
53	355565X1	AR	Nut Unc	(F, G)
54	365416X1	AR	Bolt	(F, G)
55	353691X1	AR	Screw Unc	(F, G)
56	364964X1	AR	Bolt Unc	(F, G)
57	363770X1	AR	Bolt Unc	(F, G)
58	363906X1	AR	Bolt Unc	(F, G)
59	357751X1	AR	Screw Unc	(F, G)
60	353756X1	AR	Washer	3/8" (F, G)
61	353434X1	AR	Lock Washer	3/8" (F, G)
62	355566X1	AR	Nut Unc	(F, G)
63	365758X1	AR	Nut	(F, G)
64	354404X1	AR	Bolt	(F, G)
65	353439X1	AR	Lock Washer	1/2" (F, G)

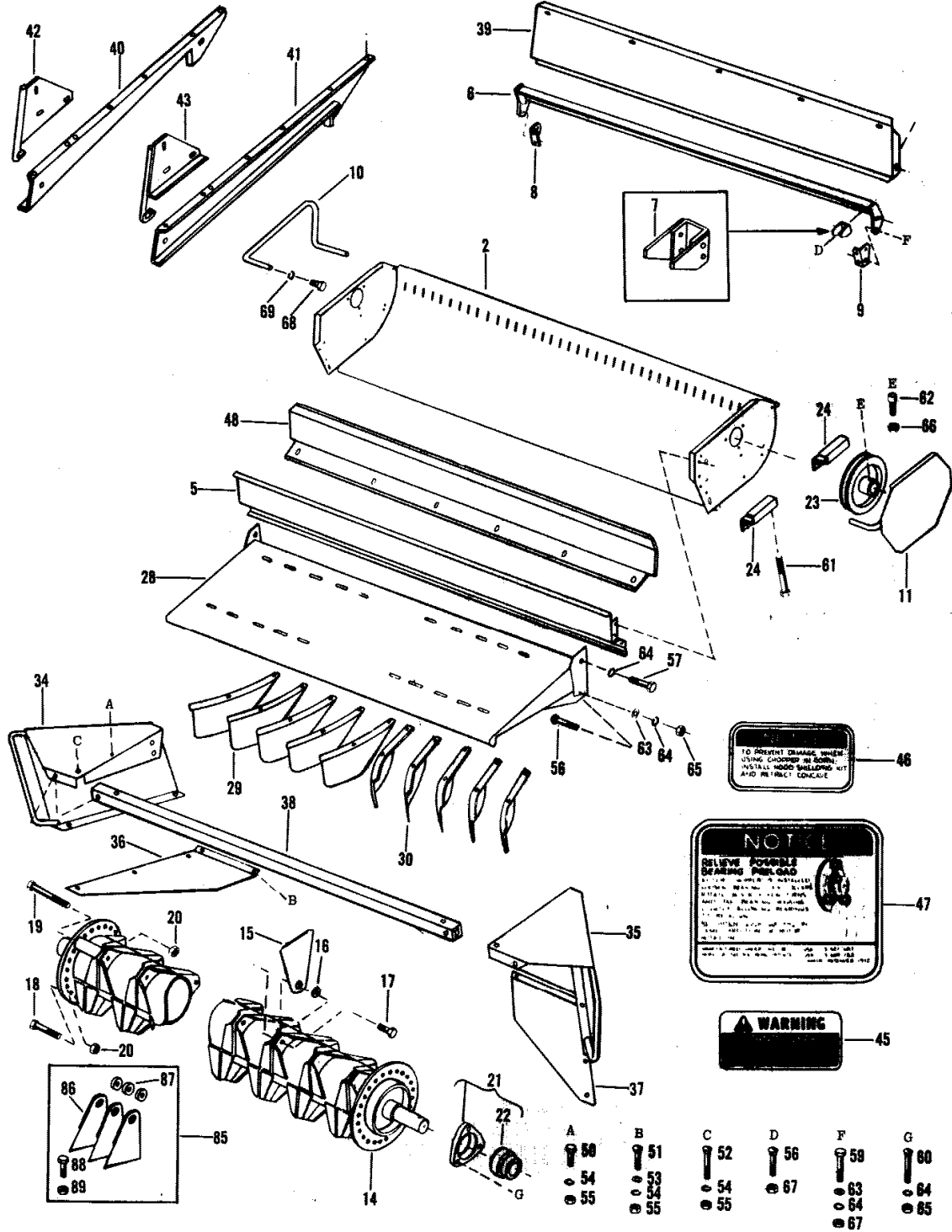
(A)  
PART NUMBER SHOWN FOR REFERENCE ONLY  
(B)  
USED LATE PRODUCTION MACHINES.  
(C)  
USED EARLY PRODUCTION MACHINES.  
(D)  
USED MACHINE INSTALLED WITH QUICK DETACHKIT  
(E)  
USED MACHINE INSTALLED WITHOUT QUICK DETACH KIT  
(F)  
MF 750  
(G)  
MF 760

# MF 760 STRAW CHOPPER (US) - 651243EA

6

## HOUSING, ADAPTER AND ROTOR

BB921-1



1st Print

651 243 M95 (Issue 1) 4/79

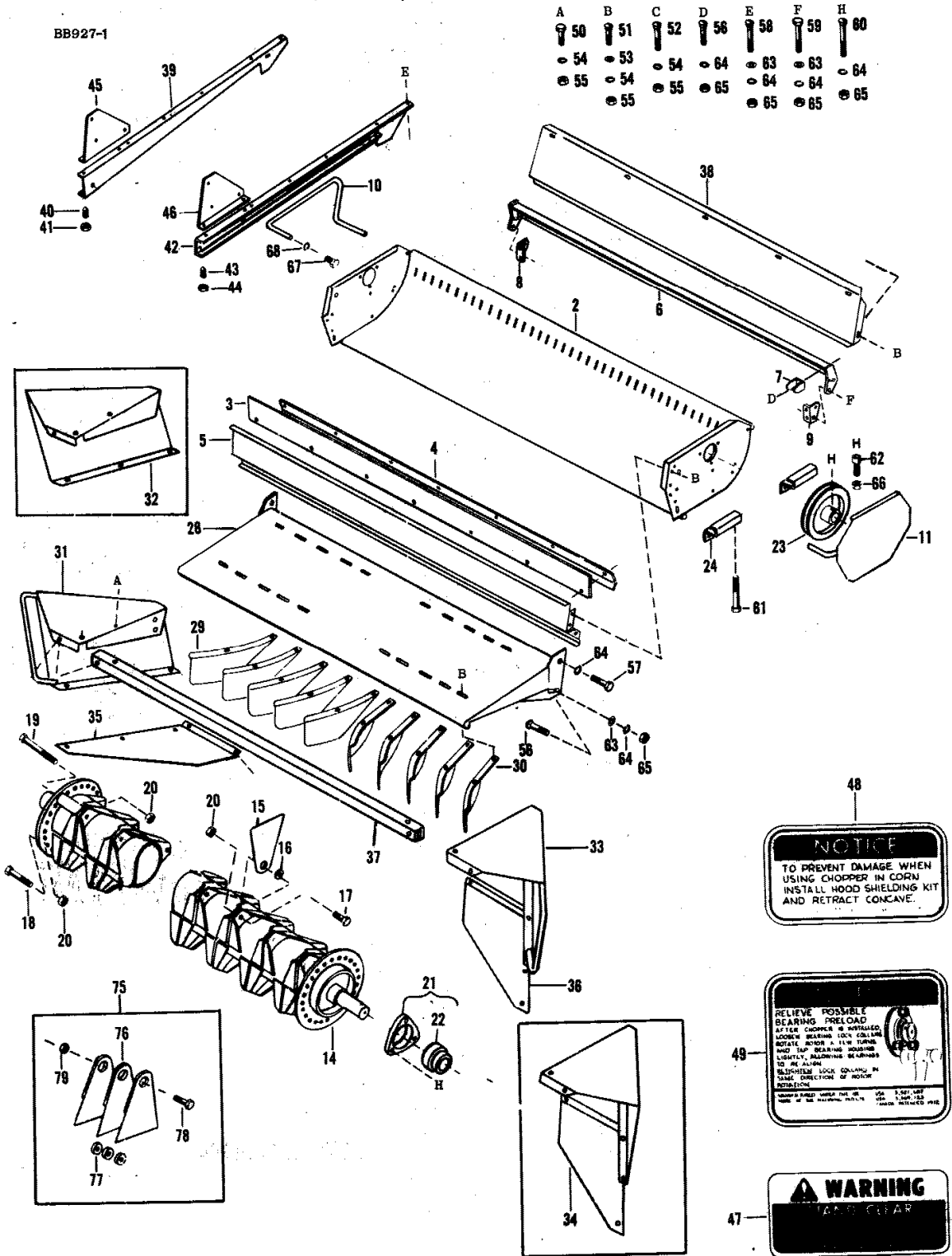


Item	Part Number	Qty	Description	Comments
				USED LATE PRODUCTION 740E COMBINE
				USED LATE PRODUCTION 750E COMBINE AFTER SERIAL NUMBER 169611195
				USED LATE PRODUCTION 760E COMBINE AFTER SERIAL NUMBER 17465829
	259939M91	1	Straw Chopper	(A, B, C)
	259938M91	1	Straw Chopper	(A, D)
2	1048577M91	1	Housing	(B, C)
	1048593M91	1	Housing	(D)
5	1048580M1	1	Panel	(B, C)
	1048597M1	1	Panel	(D)
6	1048581M91	1	Concave	(B, C)
	1048595M91	1	Plate	(D)
7	1052793M91	17	Blade Cutter	(B, C)
	1052793M91	17	Blade Cutter	(D)
8	1052794M1	1	Bearer	Left Hand (B, C, D)
9	1052795M1	1	Bearer	Right Hand (B, C, D)
10	1040626M1	1	Bar	Left Hand (B, C, D)
11	1045974M91	1	Cowl	Right Hand (B, C, D)
14	1048587M91	1	Rotor	INCL. REF. 15-20 (B, C)
14	1046198M91	1	Rotor	(D)
15	1046199M1	35	Blade	Not serviced, order 837113M91 See Page - Reference Number 85 (B, C)
15	1046199M91	41	Blade	Not serviced, order 837113M91 See Page - Reference Number 85 (D)
16	1033058M2	35	Bush	(B, C)
	1033058M2	41	Bush	(D)
17	353538X1	31	Screw Unf	(B, C)
	353538X1	37	Screw Unf	(D)
18	353550X1	2	Bolt Unf	(B, C, D)
19	354513X1	2	Bolt Unf	(B, C, D)
20	195586M1	35	Nut	(B, C, )
21	1048584M91	2	Bearing	(D)
22	834066M1	1	Bearing Assy	(B, C, D)
23	1048585M1	1	Pulley	(B, C, D)
24	1048586M1	4	Bearer	(B, C, D)
28	1048588M91	1	Plate	(B, C)
	1048596M91	1	Plate	(D)
29	1036953M1	5	Fin	Left Hand (B, C)
29	1036953M1	6	Fin	Left Hand (D)
30	1036952M1	5	Fin	Right Hand (B, C)
30	1036952M1	6	Fin	Right Hand (D)
34	1052796M91	1	Cowl	Left Hand (B, C, D)
35	1052797M91	1	Cowl	Right Hand (B, C, D)
36	1048589M1	1	Cowl	Left Hand (B, C, D)
37	1048590M1	1	Cowl	Right Hand (B, C, D)
38	1053572M1	1	Rail	(B, C)
	1046205M1	1	Slipper	(D)
39	1052798M1	1	Panel	(B, C)
	1052804M1	1	Chute	(D)
40	1052799M91	1	Cowl	Left Hand (B, C, D)
41	1052800M91	1	Cowl	Right Hand (B, C, D)
42	1052801M91	1	Gusset	Left Hand (B, C, D)
43	1052802M91	1	Gusset	Right Hand

Item	Part Number	Qty	Description	Comments
				(B, C, D)
45	1050047M1	3	Decal	(B, C, D)
46	1050963M1	1	Decal	(B, C, D)
47	1050965M1	1	Decal	(B, C, D)
48	1052803M1	1	Panel	(B, C,)
48	1052805M1	1	Blade	(D)
50	353677X1	AR	Screw Unc	(B, C, D)
51	368196X1	AR	Bolt Unc	(B, C, D)
52	364955X1	AR	Bolt	(B, C, D)
53	353755X1	AR	Washer	5/16" (B, C, D)
54	353446X1	AR	Lock Washer	5/16" (B, C, D)
55	355565X1	AR	Nut Unc	(B, C, D)
56	365416X1	AR	Bolt	(B, C, D)
57	353689X1	AR	Screw Unc	(B, C, D)
59	353691X1	AR	Screw Unc	(B, C, D)
60	363770X1	AR	Bolt Unc	(B, C, D)
61	354264X1	AR	Bolt Unc	(B, C, D)
62	357751X1	AR	Screw Unc	(B, C, D)
63	355619X1	AR	Washer	3/8" (B, C, D)
64	353434X1	AR	Lock Washer	3/8" (B, C, D)
65	355566X1	AR	Nut Unc	(B, C, D)
66	365758X1	AR	Nut	(B, C, D)
67	358647X1	AR	Nut Unc	(B, C, D)
68	354404X1	AR	Bolt	(B, C, D)
69	353439X1	AR	Lock Washer	1/2" (B, C, D)
85	837113M92	AR	Knife	(B, C, D)
86	1046199M1	3	Blade	Not serviced, order 837113M492 (B, C, D)
87	1033058M2	3	Bush	(B, C, D)
88	353538X1	3	Screw Unf	(B, C, D)
89	195586M1	3	Nut	(B, C, D)

(A)  
PART NUMBER SHOWN FOR REFERENCE ONLY  
(B)  
740E  
(C)  
750E  
(D)  
760E

HOUSING, ADAPTER AND ROTOR



1st Print

651 243 M95 (Issue 1) 4/79

**NOTICE**  
TO PREVENT DAMAGE WHEN USING CHOPPER IN CORN INSTALL HOOD SHIELDING KIT AND RETRACT CONCAVE.

**RELIEVE POSSIBLE BEARING PRELOAD**  
AFTER CHOPPER IS STOPPED LOCKEN BEARING LOCK COLLAR. ROTATE ROTOR A FEW TURNS AND TOP BEARING HOUSING LIGHTLY, ALLOWING BEARINGS TO SET. ALWAYS LOCK COLLAR IN SAME DIRECTION OF ROTOR ROTATION.  
49

**WARNING**  
KEEP CLEAR

Item	Part Number	Qty	Description	Comments
				USED ALL EARLY PRODUCTION 740E COMBINES
				USED EARLY PRODUCTION 750E COMBINE AFTER SERIAL NUMBER 1696111195
				USED EARLY PRODUCTION 760E COMBINE AFTER SERIAL NUMBER 174605829
	259502M91	1	Straw Chopper	(A, D, E)
	265451M91	1	Straw Chopper	(A, F)
2	1050961M91	1	Housing	(D, E)
	1048593M91	1	Housing	(F)
3	1048578M1	1	Filler	(D, E)
	1048594M1	1	Gasket	(F)
4	1051072M1	1	Bar	(D, E)
	1051073M1	1	Bar	(F)
5	1048580M1	1	Panel	(D, E)
	1048597M1	1	Panel	(F)
6	1048581M91	2	Concave	(D, E)
	1048595M91	1	Plate	(F)
7	1041155M1	34	Tooth	(D, E)
	1041155M1	20	Tooth	(F)
8	1048582M1	2	Bracket	Left Hand (D, E)
8	1048582M1	1	Bracket	Left Hand (F)
9	1048583M1	2	Bracket	Left Hand (D, E)
9	1048583M1	1	Bracket	Right Hand (F)
10	1040626M1	1	Bar	Left Hand (D, E, F)
11	1045974M91	1	Cowl	Right Hand (D, E, F)
14	1048587M91	1	Rotor	(D, E)
	1046198M91	1	Rotor	(F)
15	1046199M1	35	Blade	Not serviced, order 837113M91 See Page - Reference Number 75 (D, E)
15	1046199M1	41	Blade	Not serviced, order 837113M91 See Page - Reference Number 75 (F)
16	1033058M2	35	Bush	(D, E)
	1033058M2	41	Bush	(F)
17	353538X1	31	Screw Unf	(D, E)
	353538X1	37	Screw Unf	(F)
18	353550X1	2	Bolt Unf	(D, E, F)
19	354513X1	2	Bolt Unf	(D, E, F)
20	195586M1	35	Nut	(D, E)
	195586M1	41	Nut	(F)
21	1048584M91	2	Bearing	(D, E, F)
22	834066M1	1	Bearing Assy	(D, E, F)
23	1048585M1	1	Pulley	(D, E, F)
24	1048586M1	4	Bearer	(D, E, F)
28	1048588M91	1	Plate	(D, E)
	1048596M91	1	Plate	(F)
29	1036953M1	5	Fin	Left Hand (D, E)
29	1036953M1	6	Fin	Left Hand (F)
30	1036952M1	5	Fin	Right Hand (D, E)
30	1036952M1	6	Fin	Right Hand (F)
31	1052796M91	1	Cowl	Left Hand (B, D, E, F)
32	1046201M1	1	Cowl	Left Hand (C, D, E, F)
33	1052797M91	1	Cowl	Right Hand (B, D, E, F)
34	1046202M1	1	Cowl	Right Hand

Item	Part Number	Qty	Description	Comments
35	1048589M1	1	Cowl	(C, D, E, F) Left Hand
36	1048590M1	1	Cowl	(D, E, F) Right Hand
37	1053572M1	1	Rail	(D, E, F)
37	1046205M1	1	Slipper	(F)
38	1043605M1	1	Chute	(D, E)
38	1043604M1	1	Plate	(F)
	1053584M91	1	Slide	Left Hand (D, E, F)
39	1048592M91	1	Plate	(D, E, F)
40	354126X1	1	Screw Unc	(D, E, F)
41	355564X1	1	Nut Unc	(D, E, F)
	1053583M91	1	Slide	Right Hand (D, E, F)
42	1048591M91	1	Plate	(D, E, F)
43	354126X1	1	Screw Unc	(D, E, F)
44	355564X1	1	Nut Unc	(D, E, F)
45	1044492M1	1	Gusset	Left Hand (D, E, F)
46	1044493M1	1	Gusset	Right Hand (D, E, F)
47	1050047M1	3	Decal	(D, E, F)
48	1050963M1	1	Decal	(D, E, F)
49	1050965M1	1	Decal	(D, E, F)
50	353677X1	AR	Screw Unc	(D, E, F)
51	368196X1	AR	Bolt Unc	(D, E, F)
52	364955X1	AR	Bolt	(D, E, F)
53	353755X1	AR	Washer	5/16" (D, E, F)
54	353446X1	AR	Lock Washer	5/16" (D, E, F)
55	355565X1	AR	Nut Unc	(D, E, F)
56	365416X1	AR	Bolt	(D, E, F)
57	353689X1	AR	Screw Unc	(D, E, F)
58	364964X1	AR	Bolt Unc	(D, E, F)
59	353691X1	AR	Screw Unc	(D, E, F)
60	363770X1	AR	Bolt Unc	(D, E, F)
61	354264X1	AR	Bolt Unc	(D, E, F)
62	357751X1	AR	Screw Unc	(D, E, F)
63	355619X1	AR	Washer	3/8" (D, E, F)
64	353434X1	AR	Lock Washer	3/8" (D, E, F)
65	355566X1	AR	Nut Unc	(D, E, F)
66	365758X1	AR	Nut	(D, E, F)
67	354404X1	AR	Bolt	(D, E, F)
68	353439X1	AR	Lock Washer	1/2" (D, E, F)
75	837113M92	AR	Knife	(D, E, F)
76	1046199M1	3	Blade	Not serviced, order 837113M92 (D, E, F)
77	1033058M2	3	Bush	(D, E, F)
78	353538X1	3	Screw Unf	(D, E, F)
79	195586M1	3	Nut	(D, E, F)

(A)  
PART NUMBER SHOWN FOR REFERENCE ONLY  
(B)  
USED LATE PRODUCTION MACHINES.  
(C)  
USED EARLY PRODUCTION MACHINES.  
(D)  
740E  
(E)  
750E  
(F)  
760E

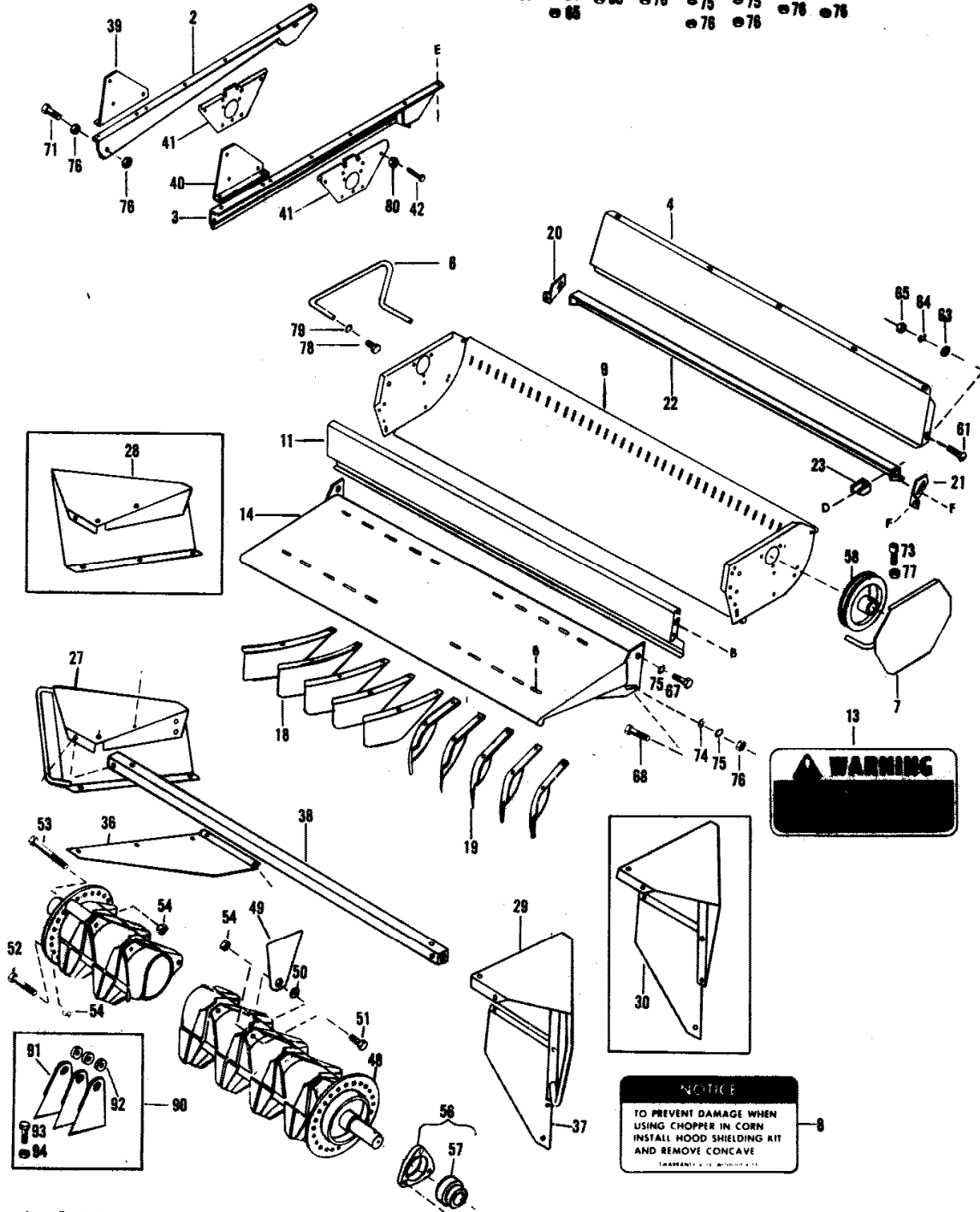
# MF 760 STRAW CHOPPER (US) - 651243EA

10

## HOUSING, ADAPTER AND ROTOR

BB932-1

A	B	C	D	E	F	G	H
80	81	82	86	88	89	70	72
84	83	84	75	74	74	75	75
85	84	85	76	75	75	76	76
	86			76	76		



1st Print

651 243 M95 (Issue 1) 4/79

**Buy Now**



Our support email:

[ebooklibonline@outlook.com](mailto:ebooklibonline@outlook.com)