

Page Title	Page Number
TABLE - RIGID CUTTER BAR	2
TABLE PLATES, SHIELDS AND DIVIDERS - RIGID CUTTER BAR	5
TABLE - RIGID CUTTER BAR	6
TABLE PLATES, SHIELDS AND DIVIDERS - RIGID CUTTER BAR	9
TABLE - FLOATING CUTTER BAR	9A
DIVIDERS AND SHIELDS - FLOATING CUTTER BAR	9E
SHIELDS, SUPPORTS, BRACKETS - FLOATING CUTTER BAR	9H
COUNTER BALANCE, ARM, IDLER, SPRING ASSEMBLY - FLOATING CUTTER BAR	9J
AUGER	10
AUGER	14
KNIFE - RIGID CUTTER BAR	18
KNIFE - RIGID CUTTER BAR	21
CUTTER BAR - FLOATING CUTTER BAR	21A
LOOP DIVIDER, FLOATING DIVIDER - FLOATING CUTTER BAR	21D
WOBBLE KNIFE DRIVE	22
WOBBLE KNIFE DRIVE	25
DRIVE, TABLE AND REEL	26
DRIVE, TABLE AND REEL	30
DRIVE, TABLE AND REEL - CHAIN DRIVE	34
ELECTRIC VARIABLE SPEED PICK-UP REEL DRIVE	38
HYDROSTATIC VARIABLE SPEED REEL DRIVE	41
ELECTRIC MOTOR AND WIRING	42
HYDROSTATIC REEL DRIVE HYDRAULICS	45
HYDRAULIC MOTOR	46
REEL AND SUPPORTS	49
REEL AND SUPPORTS	50
MF 67 PICK-UP (DRUM) - FRAME, DRUM, GRAIN PAN	53
MF 67 PICK-UP (DRUM) - WINDBAR, WHEELS	54
MF 67 PICK-UP (DRUM) - DRIVE, DRIVE EXTENSION, GUARDS	57
MF 67 PICK-UP (DRAPER) - FRAME, ROLLER, GRAIN PAN, BELTS	58
MF 67 PICK-UP (DRAPER) - WINDBAR, WHEELS	61
MF 67 PICK-UP (DRAPER) - DRIVE, DRIVE EXTENSION, GUARDS	62
MF 61 PICK UP - 7 APRON	65
MF 61 PICK UP - 7 APRON	66
MF 61 PICK UP - 7 APRON	69
MF 61 PICK UP - WHEELS AND LOWERING KIT	70
MF 61 PICK UP - 6 APRON	73
MF 61 PICK UP - 6 APRON	74
MF 61 PICK UP - 6 APRON	77
MF 61 PICK UP - VARIABLE SPEED AND DIRECT DRIVE	78
ELEVATOR DRIVE	81
ELEVATOR HOUSING REPAIR	82
ELEVATOR SHIELDS - REGULAR AND LONG ELEVATOR	85
ELEVATOR SHAFT, DRIVE AND PADDLES	86
ELEVATOR SHAFTS AND DRIVES	90
ELEVATOR DRIVE SHAFT AND CLUTCH	93
ELEVATOR TOP SHAFT AND DRIVE - PADDLE TO SLAT CONVERSION	95B
ELEVATOR TABLE TO CYLINDER - PADDLE TO SLAT CONVERSION	95C
ELEVATOR CLUTCHES - ELECTRO MAGNETIC HEADER THROW-OUT	97
ELEVATOR EXTENSION - RICE TRACK	98
CYLINDER HOUSING	101
CYLINDER HOUSING	102
CYLINDER DRIVE	104A
CYLINDER DRIVE	104B
CYLINDER DRIVE	106
CYLINDER DRIVE	110
VARIABLE SPEED DRIVE CONTROL	114
VARIABLE SPEED DRIVE CONTROL - USED PRIOR TO MACHINE SERIAL NUMBER 169604597	117
CYLINDER (RASP-BAR) - REGULAR	118
EDIBLE BEAN ATTACHMENT	121
CYLINDER (SPIKE TOOTH)	122
CONCAVE (RASP-BAR)	125
CONCAVE (SPIKE TOOTH)	126
CONCAVE CONTROL	129
CONCAVE CONTROL	130
CONCAVE CONTROL	133

TABLE OF CONTENT

STONE TRAP, FEED PLATE	134
FRONT BEATER	137
REAR BEATER	138
REAR BEATER	141
SHAKER SHOE AND SIEVES	142
GRAIN PAN AND SHAKER SHAFT	145
SCREENS - SHAKER SHOE	146
STRAW WALKERS	149
STRAW WALKERS - MF EUROPE ONLY	150
STRAW WALKERS AND RETURNS ELEVATOR DRIVE	153
RETURNS ELEVATOR	154
RETURNS ELEVATOR CARRIERS	157
RETURNS ELEVATOR SHIELDS	158
GRAIN ELEVATOR	161
GRAIN ELEVATOR DRIVE	162
GRAIN TANK	165
GRAIN TANK - EUROPE ONLY	166
GRAIN TANK UNLOADER EXTENSION - 48 EXTENSION	169
GRAIN TANK UNLOADER TOP	170
GRAIN TANK UNLOADER TOP	173
GRAIN TANK UNLOADER BOTTOM	174
GRAIN TANK UNLOADER BOTTOM	175B
GRAIN TANK UNLOADER BOTTOM	177
GRAIN TANK UNLOADER DRIVE	178
GRAIN TANK UNLOADER DRIVE SHIELDS	182
FANNING MILL	185
LEFT HAND DRIVE - FANNING MILL	186
LEFT HAND DRIVE IDLERS - FANNING MILL	189
HOOD, CURTAIN AND DEFLECTOR	190
HOOD, CURTAIN AND DEFLECTOR - EUROPE ONLY	193
STRAW SPREADER	194
STRAW SPREADER DRIVE	197
MAIN FRAME	198
MAIN FRAME	201
FRONT AXLE AND WHEELS	202
MAIN DRIVE	205
TRACTION CLUTCH - USED MACHINE SERIAL NUMBER 1696009674 AND UP.	206
TRACTION CLUTCH - USED MACHINED SERIAL NUMBER 1696005956 TO 16960096 74	210
TRACTION CLUTCH	213
TRACTION DRIVE - HYDROSTATIC TRANSMISSION	214
TRACTION DRIVE - HYDROSTATIC TRANSMISSION	215B
VARIABLE SPEED TRACTION DRIVE - 4 SPEED TRANSMISSION	217
VARIABLE SPEED TRACTION DRIVE - 4 SPEED TRANSMISSION	219B
LEFT FRONT SHIELDS - MUD SHIELDS	221
GEAR SHIFT - CONSTANT MESH TRANSMISSION	222
GEAR SHIFT	225
GEAR SHIFT	226
CONSTANT MESH TRANSMISSION - 4 SPEED, NORTH AMERICA ONLY	229
TRANSMISSION - 4 SPEED	233
CONSTANT MESH TRANSMISSION - HYDROSTATIC, NORTH AMERICA ONLY	237
TRANSMISSION - HYDROSTATIC	241
CONSTANT MESH TRANSMISSION - 4 SPEED, EUROPE ONLY	245
CONSTANT MESH TRANSMISSION - HYDROSTATIC, EUROPE ONLY	249
HYDRAULIC CONTROLS - 4 SPEED AND HYDROSTATIC	251B
HYDRAULIC CONTROLS - 4 SPEED AND HYDROSTATIC	253
HYDRAULIC CONTROLS - 4 SPEED AND HYDROSTATIC	254
HYDROSTATIC TRANSMISSION CONTROLS - CONSTANT MESH TRANSMISSION	257
HYDROSTATIC TRANSMISSION CONTROLS	258
HYDROSTATIC PRESSURE RELEASE CONTROLS	261
HYDROSTATIC PRESSURE RELEASE CONTROLS - EUROPE ONLY	262
HYDROSTATIC TRANSMISSION CONTROLS	263B
HYDROSTATIC TRANSMISSION CONTROLS	265
CONTROL BOX	265A
CONTROL BOX	266
CONTROL BOX	269
HYDROSTATIC PUMP DRIVE AND MOTOR - CONSTANT MESH TRANSMISSION	270
HYDROSTATIC PUMP DRIVE AND MOTOR - CONSTANT MESH TRANSMISSION	271B
HYDROSTATIC PUMP AND MOTOR	273

TABLE OF CONTENT

HYDROSTATIC PUMP	274
HYDROSTATIC PUMP	277A
CONTROL VALVE, CHARGING PUMP - HYDROSTATIC PUMP	277E
PUMP DRIVE MOTOR	278
PUMP DRIVE MOTOR	279B
AUXILIARY EQUIPMENT HYDROSTATIC TRANSMISSIONS - CONSTANT MESH	281
AUXILIARY EQUIPMENT HYDROSTATIC TRANSMISSIONS	282
FINAL DRIVE - GRAIN & RICE RUBBER	285
FINAL DRIVE - RICE-TRACK	289
TURNING BRAKES	289A
TURNING BRAKES	290
TURNING BRAKES	293
PARKING BRAKE CONTROL - NORTH AMERICA AND EUROPE	294
BRAKE CYLINDER, BRAKE ASSEMBLY	297
TRACK, FRAME AND AXLE	298
TRACK, IDLER AND ROLLERS	301
A FRAME, FIXED REAR AXLE, WHEELS	302
A FRAME, FIXED REAR AXLE, WHEELS - GRAIN	305A
A FRAME, FIXED REAR AXLE, WHEELS - GRAIN	306
ADJUSTABLE REAR AXLE - GRAIN	309A
ADJUSTABLE REAR AXLE - GRAIN	310
REAR WHEEL DRIVE - AXLE, TIE ROD, WHEELS	311B
REAR WHEEL DRIVE - ELECTRICAL WIRING	311C
REAR WHEEL DRIVE - HYDRAULIC	311F
REAR WHEEL DRIVE - VALVES, SOLENOID	311G
REAR WHEEL DRIVE - AXLE KNEE, MOTOR HOUSING	311K
REAR WHEEL DRIVE - WHEEL HUB, CYLINDER BLOCK, HOUSING	311L
REAR WHEEL DRIVE - PLANET PINION, CARRIER, HOUSING	311P
REAR WHEEL DRIVE - WHEEL MANIFOLD	311Q
WALKER BODY	313
WALKER BODY EXTENSION - EUROPE ONLY	314
OPERATOR'S PLATFORM AND LADDER	315B
OPERATOR'S PLATFORM AND LADDER	317
SEAT - CLOTH AND VINYL	318
SEAT - VINYL	321
ENGINE COVER	322
ENGINE COVER	325
ENGINE COVER EXTENSION AND CYCLONE AIR INTAKE	325A
ENGINE COVER EXTENSION AND CYCLONE AIR INTAKE	326
ENGINE COVER EXTENSION	329
ENGINE COVER EXTENSION	330
AIR INTAKE	333
STEERING PEDESTAL	333A
STEERING PEDESTAL	334
STEERING PEDESTAL	337
STEERING GEAR	338
GREASE HARNESS	339B
GREASE HARNESS	341
GREASE HARNESS	342
INSTRUMENTS AND SWITCHES	343C
INSTRUMENTS	345
MONITOR SYSTEM - WITH CAB	345A
MONITOR SYSTEM - EUROPE ONLY	345E
ELECTRICAL WIRING - GAS	346
ELECTRICAL WIRING - A6-372 DIESEL	347B
ELECTRICAL WIRING	347C
ELECTRICAL WIRING	349
ELECTRICAL WIRING - AT6-354 DIESEL	349A
ELECTRICAL WIRING	349D
ELECTRICAL WIRING	350
ELECTRICAL WIRING	353
LIGHTING	353D
LIGHTING	354
LIGHTS, RAILS	357
LIGHTS	358
ROAD LIGHTS - EUROPE ONLY	359C
ROAD LIGHTS - EUROPE ONLY	361
ELECTRICAL WIRING - ROAD LIGHTS	362

TABLE OF CONTENT

LIGHTS - EUROPE ONLY	365
HOURLY METER, WARNING HORN	366
TOOL BOX, FUEL TANK AND LINES	369
TOOL BOX, FUEL TANK AND LINES	370
TOOL BOX, FUEL TANK AND LINES	371B
TOOL BOX, FUEL TANK AND LINES	373
TOOL BOX, FUEL TANK AND LINES	374
TOOL BOX, FUEL TANK AND LINES	377
THROTTLE CONTROL, FUEL SHUT-OFF	378
THROTTLE CONTROL, FUEL SHUT-OFF	379B
THROTTLE CONTROL, FUEL SHUT-OFF	381
REEL LIFT HYDRAULICS	382
REEL LIFT HYDRAULICS	385
HYDROSTATIC REEL DRIVE AND HYDRAULICS	385A
HYDROSTATIC REEL DRIVE HYDRAULICS - HYDRAULIC PRESSURE AND RETURN LINES	386
HYDROSTATIC REEL DRIVE AND HYDRAULICS - HYDRAULIC PRESSURE AND RETURN LINES	389
HYDROSTATIC REEL DRIVE HYDRAULICS	390
HYDRAULIC CONTROL REEL FORE AND AFT - EUROPE ONLY	391B
TABLE LIFT HYDRAULICS	391C
TABLE LIFT HYDRAULICS	393
TANK UNLOADER HYDRAULICS	394
TANK UNLOADER HYDRAULICS	397
TANK UNLOADER HYDRAULICS	398
TANK UNLOADER HYDRAULICS	401
VARIABLE SPEED HYDRAULICS - 4 SPEED	402
VARIABLE SPEED HYDRAULICS - 4 SPEED	405
HYDRAULIC PRESSURE AND RETURN LINES	405A
HYDRAULIC PRESSURE AND RETURN LINES	406
HYDRAULIC PRESSURE AND RETURN LINES	409
HYDRAULIC PRESSURE AND RETURN LINES	410
HYDRAULIC PRESSURE AND RETURN LINES	413
STEERING HYDRAULICS	413A
STEERING HYDRAULICS	414
STEERING HYDRAULICS	417
STEERING HYDRAULICS	418
HYDRAULIC TANK	421
HYDRAULIC PUMP DRIVE AND ENGINE SUPPORTS	422
HYDRAULIC OIL PUMP	425
MAIN CONTROL VALVE - USED MACHINE SERIAL NUMBER 169613713 AND UP.	426
HYDRAULIC CONTROL VALVE - 4 SPEED AND HYDROSTATIC	429
HYDRAULIC CONTROL VALVE - 4 SPEED	430
HYDRAULIC CONTROL VALVE - HYDROSTATIC DRIVE	433
TANK UNLOADER SWING CONTROLS - USED MACHINE SERIAL NO. 1696016539 AND UP	433A
TANK UNLOADER SWING CONTROLS - USED MACHINE SERIAL NUMBER 1696014236 THRU 1696016539.	434
UNLOADER SPOUT CONTROLS - USED MACHINE SERIAL NUMBER 1696007694 TO 169614236	437
UNLOADER SPOUT CONTROLS - USED PRIOR TO MACHINE SERIAL NUMBER 1696007694.	438
HYDRAULIC CYLINDERS - SEE NOTE G	441
HYDRAULIC CYLINDERS - MACHINE	442
HYDRAULIC CYLINDERS	445
STEERING CONTROL UNIT - MACHINE	445A
HYDROSTATIC STEERING PUMP - MACHINE	446
HYDRAULIC STEERING CYLINDER	449
HYDRAULIC OIL FILTER AND CONTROL VALVE	450
TABLE HEIGHT CONTROL - FLOATING CUTTER BAR	451B
TABLE HEIGHT CONTROL - RIGID CUTTER BAR	451C
TABLE HEIGHT CONTROL - MACHINE	453
TABLE HEIGHT CONTROL - MACHINE	454
TABLE HEIGHT CONTROL - FLOATING CUTTER BAR	455B
TABLE HEIGHT CONTROL - RIGID CUTTER BAR	455C
TABLE HEIGHT CONTROL - RIGID CUTTER BAR	457
TABLE HEIGHT CONTROL - MACHINE	458
TABLE HEIGHT HYDRAULICS - MACHINE	461
ADAPTING PARTS FOR CORN HEAD - DRIVE	462
REAR MOTOR HOUSING	465
BELTS	466
CHAINS	470
CHAINS	473

TABLE OF CONTENT

CHAINS	477
CONVEYOR CHAINS	478
CHAINS - ELEVATOR EXTENSION	481
EMBLEMS AND LABELS - MACHINE	481A
EMBLEMS AND LABELS - MACHINE	482
EMBLEMS AND LABELS - MACHINE	483B
EMBLEMS AND LABELS - MACHINE	483C
EMBLEMS AND LABELS	483F
ALTERNATOR - MACHINE	485
ALTERNATOR - MACHINE	486
STARTER - GAS	489
STARTER - NEVER USED IN PRODUCTION, SERVICE REPLACEMENT ONLY	490
SOLENOID	493
ENGINE ASSEMBLY, CYLINDER BLOCK - GAS	494
CRANKSHAFT & FLYWHEEL - GAS	497
PISTONS, RINGS, CONNECTING RODS - GAS	498
CYLINDER HEAD, CAMSHAFT - GAS	501
OIL PUMP, OIL PAN - GAS	502
GASKETS - GAS	505
WATER PUMP	506
RADIATOR, FAN, DRIVE - GAS	509
MANIFOLD EXHAUST - GAS	510
AIR CLEANER - GAS	513
ELECTRIC FUEL PUMP - GAS	514
DISTRIBUTOR - GAS	517
CARBURETOR - GAS	518
GOVERNOR	521
CYLINDER BLOCK - A6-372 DIESEL	521A
PISTON RINGS AND RODS - A6-372 DIESEL	521D
CRANKSHAFT AND FLYWHEEL - A6-372 DIESEL	521E
CAMSHAFT AND TIMING GEARS - A6-372 DIESEL	521H
CYLINDER HEAD - A6-372 DIESEL	521J
CYLINDER HEAD COVER - A6-372 DIESEL	521M
OIL PAN, PUMP AND FILTER - A6-372 DIESEL	521N
GASKET SETS - A6-372 DIESEL	521R
WATER PUMP - A6-372 DIESEL	521S
MANIFOLDS - A6-372 DIESEL	521V
INJECTION SYSTEM - A6-372 DIESEL	521W
FUEL INJECTION PUMP - A6-372 DIESEL	521Z
CYLINDER BLOCK - A6-372 DIESEL	522
PISTON RINGS AND RODS - A6-372 DIESEL	525
CRANKSHAFT AND FLYWHEEL - A6-372 DIESEL	526
TIMING GEAR - A6-372 DIESEL	529
CYLINDER HEAD - A6-372 DIESEL	530
CYLINDER HEAD COVER - A6-372 DIESEL	533
OIL PAN, PUMP AND FILTER - A6-372 DIESEL	534
GASKET SETS - A6-372 DIESEL	537
WATER PUMP - A6-372 DIESEL	538
MANIFOLDS - A6-372 DIESEL	541
INJECTION SYSTEM - A6-372 DIESEL	542
FUEL INJECTION PUMP - A6-372 DIESEL	545
FUEL FILTER AND FUEL PUMP - A6-372 DIESEL	546
CYLINDER BLOCK - AT6-354 DIESEL	547B
CRANKSHAFT, FLYWHEEL, INSERTS - AT6-354 DIESEL	547C
PISTONS, RINGS AND RODS - AT6-354 DIESEL	547F
CYLINDER HEAD - AT6-354 DIESEL	547G
CYLINDER HEAD COVER - AT6-354 DIESEL	547K
TIMING GEAR AND CAMSHAFT - AT6-354 DIESEL	547L
OIL PAN OIL PUMP - AT6-354 DIESEL	547P
OIL COOLER AND FILTER	547Q
GASKET SETS - AT6-354 DIESEL	547T
WATER PUMP AND ATTACHING PARTS - AT6-354 DIESEL	547U
MANIFOLDS - AT6-354 DIESEL	547W
INJECTION SYSTEM - AT6-354 DIESEL	547Y
CYLINDER BLOCK - AT6-354 DIESEL	549
PISTONS, RINGS AND RODS - AT6-354 DIESEL	550
CRANKSHAFT AND FLYWHEEL - AT6-354 DIESEL	553
TIMING GEARS - AT6-354 DIESEL	554



TABLE OF CONTENT

CYLINDER HEAD - AT6-354 DIESEL	557
CYLINDER HEAD COVER - AT6-354 DIESEL	558
OIL PAN, PUMP AND FILTER - AT6-354 DIESEL	561
GASKET SET - AT6-354 DIESEL	562
WATER PUMP - AT6-354 DIESEL	565
MANIFOLDS - AT6-354 DIESEL	566
INJECTION SYSTEM - AT6-354 DIESEL	569
FUEL INJECTION PUMP - AT6-354 DIESEL	570
FUEL FILTER AND FUEL PUMP - AT6-354 DIESEL	573
AIR INTAKE AND EXHAUST - MACHINE	573D
AIR INTAKE AND EXHAUST - MACHINE	574
AIR INTAKE AND EXHAUST - MACHINE	575C
AIR INTAKE AND EXHAUST - MACHINE	577
RADIATOR, FAN, DRIVE - A6-372 DIESEL	577D
SCREENS - RADIATOR, FAN, DRIVE	577H
RADIATOR, FAN, DRIVE - A6-372 DIESEL	578
RADIATOR, FAN, DRIVE - A6-372 DIESEL	581
RADIATOR, FAN, DRIVE - AT6-354 DIESEL	581A
RADIATOR, FAN, DRIVE - AT6-354 DIESEL	582
RADIATOR, FAN, DRIVE - AT6-354 DIESEL	585
PRE-CLEANER, PRE-SCREENER - EXTREME DUSTY CONDITIONS	586
ALTERNATOR - USED ALL AT6-354 DIESEL AND A6-372 DIESEL MACHINE SERIAL NUMBER 169602151 AND UP.	589
ALTERNATOR - USED A6-372 DIESEL PRIOR TO MACHINES SERIAL NUMBER 169602151	590
STARTER - DIESEL	591B
SOLENOID	591C
STARTER - DIESEL	593
SOLENOID - DIESEL	594
ELECTRIC ETHER STARTING KIT	597
COLD WEATHER START KIT	598
STRAW CHOPPER - DRIVE ASSEMBLY	599B
DRIVE ASSEMBLY	601
DRIVE ASSEMBLY	603B
STRAW CHOPPER - DRIVE ASSEMBLY	603F
DRIVE ASSEMBLY - USE PRIOR TO COMBINE SERIAL NUMBER 1696016539	603K
DRIVE ASSEMBLY - STRAW CHOPPER	603L
REAR DRIVE SHIELDS - STRAW CHOPPER	605
CHOPPER ALARM SYSTEM	606
HOUSING, ADAPTER AND ROTOR - STRAW CHOPPER	607B
HOUSING, ADAPTER AND ROTOR - STRAW CHOPPER	607C
HOUSING, ADAPTER AND ROTOR	607F
STRAW CHOPPER - HOUSING, ADAPTER AND ROTOR	607G
STRAW CHOPPER - CORN KIT	607K
CAB - SHEET METAL, WINDOWS	607L
CAB - SHEET METAL, WINDOWS	609
CAB - SEALING AND TRIM	609A
CAB - SEALING AND TRIM	610
CAB - SEALING STRIPS	613
COMPRESSOR - MACHINE	613A
COMPRESSOR - MACHINE	614
COMPRESSOR, EVAPORATOR, CONDENSOR - MACHINE	617
COMPRESSOR, EVAPORATOR, CONDENSOR - MACHINE	618
AIR CONDITIONING LINES	619B
AIR CONDITIONING LINES	619C
AIR CONDITIONING LINES	621
AIR CONDITIONING LINES - MACHINE	622
AIR CONDITIONING LINES - USED PRIOR TO COMBINE SERIAL NUMBER 169603516	623B
CAB ELECTRICAL WIRING - MACHINE	625
CAB ELECTRICAL WIRING - MACHINE	625A
CAB ELECTRICAL WIRING - MACHINE	625D
CAB ELECTRICAL WIRING - MACHINE	626
CAB ELECTRICAL WIRING - MACHINE	629
PRESSURIZER - MACHINE	629A
PRESSURIZER - MACHINE	630
HEATER	633
WINDSHIELD WIPER - EUROPE ONLY	633D
WINDSHIELD WIPER - EUROPE ONLY	634
PICK-UP REEL - GRAIN - 6 SPACING - 5 BAT	635D

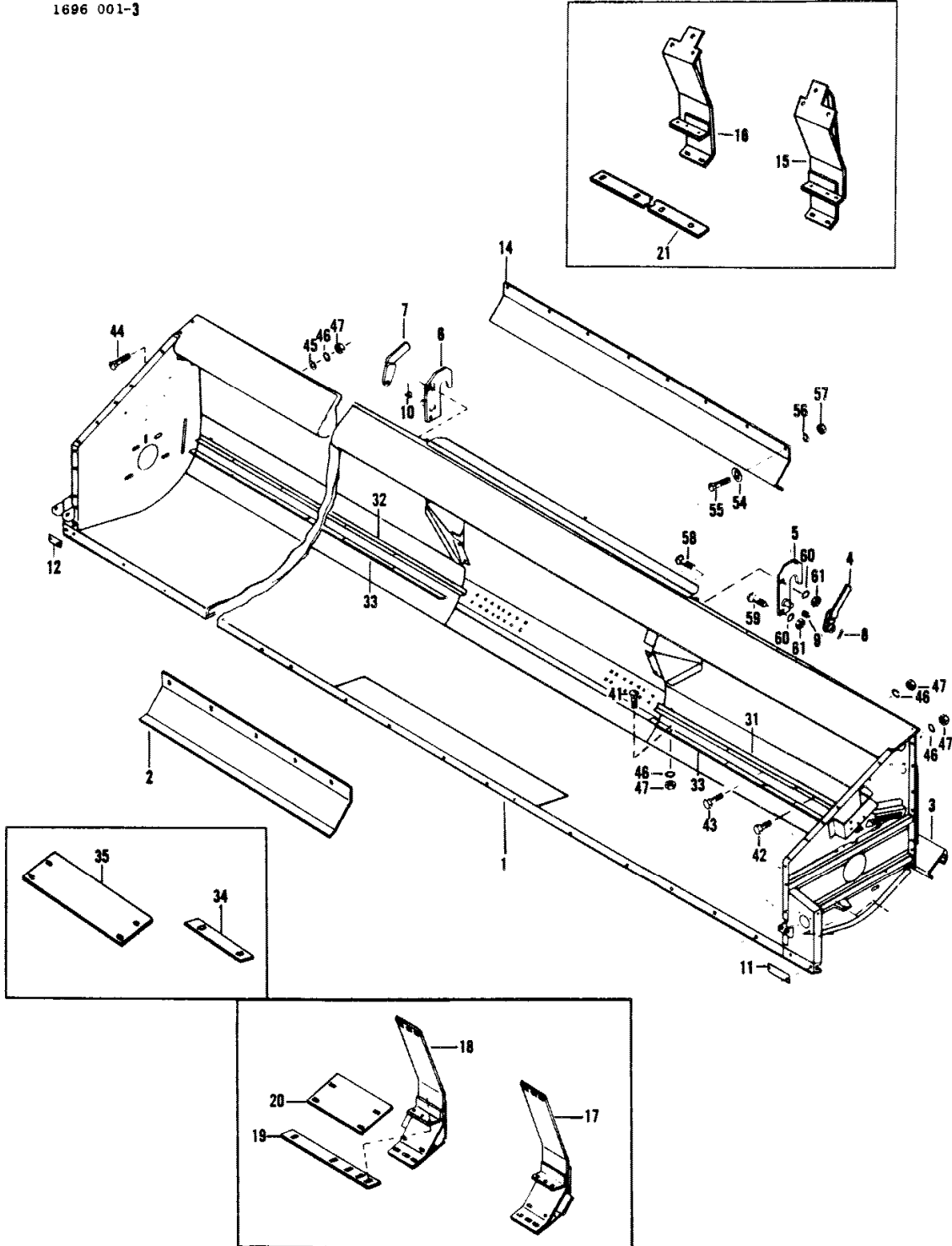
TABLE OF CONTENT

PICK-UP REEL - GRAIN - 6 SPACING - 6 BA1	635E
PICK-UP REEL - GRAIN OR RICE - 4 SPACING - 6 BAT	635H
PICK-UP REEL - GRAIN AND RICE	638
PICK-UP REEL - GRAIN	642
PICK-UP REEL - RICE	646
PICK-UP REEL - GRAIN	650
PICK-UP REEL - EXPORT ONLY	654
PICK-UP REEL - RICE	658
CLUTCH - COMBINE PICK-UP REEL	662
DRAPER TABLE	665
AUGER - DRAPER TABLE	669
WOBBLE KNIFE DRIVE	670
DRIVES, KNIFE AND AUGER - DRAPER TABLE	673
DRAPER AND DRIVE	674
REEL ARMS DIVIDERS AND SHIELDS - DRAPER TABLE	677
PICK-UP REEL - DRAPER TABLE	678
CLUTCH - PICK-UP REEL - DRAPER TABLE	681
REEL DRIVE HYDRAULICS - DRAPER TABLE	682
REEL LIFT, HYDRAULICS - DRAPER TABLE	685
CONTROL VALVE - HEADER HEIGHT	686
CONTROL VALVE - HEADER HEIGHT	689
CONTROL VALVE - EUROPE ONLY	690
FUEL FILTERS AND LINES - A6-372 DIESEL	521AA
INJECTION PUMP AND INJECTOR - AT6-354 DIESEL	547BB
TURBOCHARGER - AT6-354 DIESEL	547CC
FUEL FILTERS AND LINES - AT6-354 DIESEL	547FF
LIFT PUMP AND FUEL FILTER - AT6-354 DIESEL	547GG

2

TABLE

1696 001-3



1st Print

651 331 M95 (Issue 1) 12/77



MASSEY FERGUSON

MF 750 COMBINE, ->| 1696019595 - 651331EA

651331EA

TABLE - RIGID CUTTER BAR

2

Item	Part Number	Qty	Description	Comments
				RIGID CUTTER BAR
1	264450M91	1	Table	(A, D) INCL. REF. 2 AND 3
1	261571M91	1	Table	(B, D)
2	261580M1	1	Extension	(D)
3	261581M1	1	Support	(D)
1	264453M91	1	Table	(A, E)
	264042M91	1	Table	(B, E)
	264454M91	1	Table	(A, F)
	264042M91	1	Table	(B, F)
4	262013M92	1	Cam	(D, E, F)
5	261516M91	1	Plate	(D, E, F)
6	261517M91	1	Plate	(D, E, F)
7	262012M92	1	Cam	(D, E, F)
8	363307X1	2	Pin	(D, E, F) 3/16 X 1-1/8"
9	261641M1	1	Spring	(D, E, F) Left Hand
10	261640M1	1	Spring	(D, E, F) Right Hand
11	369141X1	1	Plate	
12	369142X1	1	Plate	
14	264022M91	1	Cowl	
15	281984M91	1	Plate	(C, D, E, F) Left Hand
16	281983M91	1	Plate	(C, D, E, F) Right Hand
17	272131M92	1	Plate	(D, E, F) Left Hand
18	272137M92	1	Plate	(D, E, F) Right Hand
19	272141M1	2	Plate	(D, E, F)
20	272142M1	2	Plate	(D, E, F)
21	282020M1	2	Strap	(C, D, E, F)
31	261573M1	1	Anglepiece	(D) Left Hand
31	261694M1	1	Angle	(E) Left Hand
31	264057M1	1	Angle	(F) Left Hand
32	261572M1	1	Anglepiece	(D) Right Hand
32	261696M1	1	Angle	(E) Right Hand
32	264059M1	1	Angle	(F) Right Hand
33	261574M1	2	Strap	(D)
	261695M1	2	Strap	(E)
	264058M1	2	Strap	(F)
34	272144M1	2	Plate	(D, E, F)
35	272143M1	2	Plate	(D, E, F)
41	364352X1	AR	Bolt Unc	(D, E, F)
42	353677X1	AR	Screw Unc	(D, E, F)
43	353678X1	AR	Screw Unc	(D, E, F)
44	364533X1	AR	Bolt	(D, E, F)
45	353755X1	AR	Washer	(D, E, F) 5/16"
46	353446X1	AR	Lock Washer	(D, E, F) 5/16"
47	355565X1	AR	Nut Unc	(D, E, F)
54	049307X	AR	Washer	(D, E, F) 7/16"
55	360513X1	AR	Screw	(D, E, F)
56	353434X1	AR	Lock Washer	(D, E, F) 3/8"
57	355566X1	AR	Nut Unc	(D, E, F)
58	261006M1	AR	Bolt	(D, E, F)
59	363423X1	AR	Bolt	(D, E, F)
60	353433X1	AR	Lock Washer	(D, E, F) 5/8"

MASSEY FERGUSON

MF 750 COMBINE, ->| 1696019595 - 651331EA

651331EA

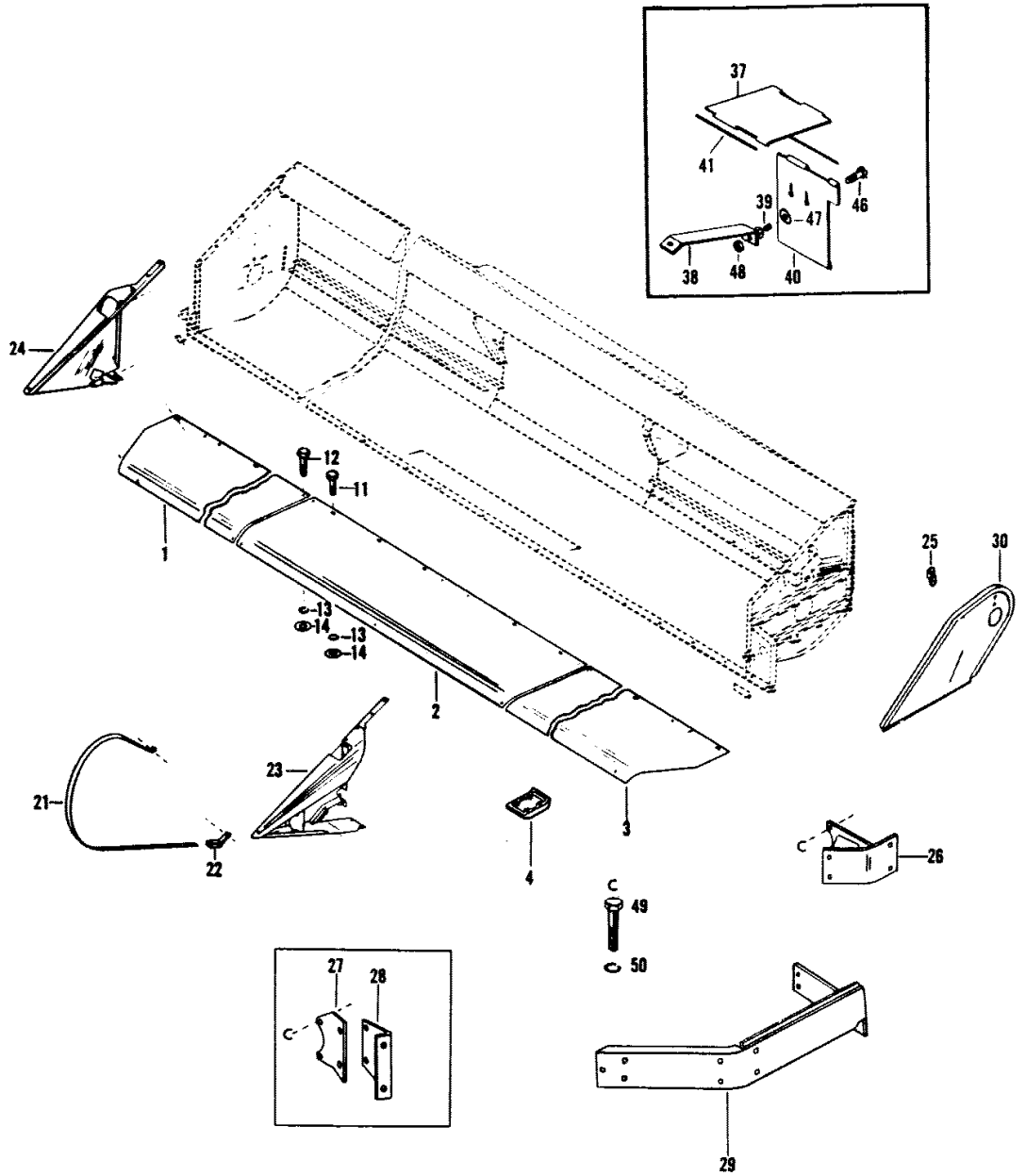
TABLE - RIGID CUTTER BAR

2

Item	Part Number	Qty	Description	Comments
61	375099X1	AR	Nut Unc	(D, E, F) (A) From Serial or Engine Number 1859032098 (B) Up to Serial or Engine Number 1859032098 (C) EUROPE ONLY (D) 13' (E) 14' (F) 15'

TABLE

1696 002-3



1st Print

651 331 M95 (Issue 1) 12/77

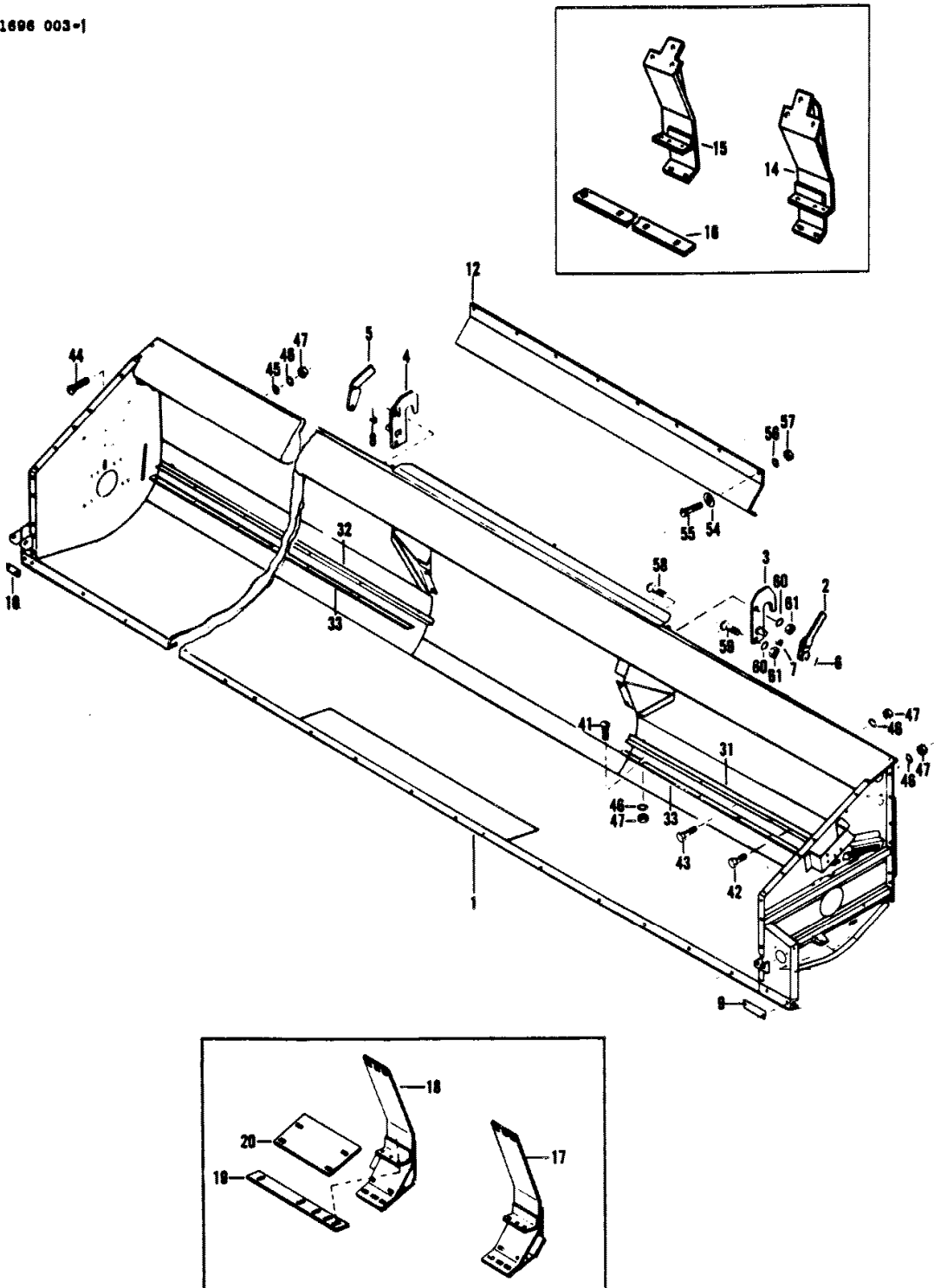
TABLE PLATES, SHIELDS AND DIVIDERS - RIGID CUTTER BAR

Item	Part Number	Qty	Description	Comments
				RIGID CUTTER BAR
1	261596M91	1	Plate	(D, F) Right Hand
1	261664M91	1	Plate	(E) Right Hand
1	264038M91	1	Plate	(F) Left Hand
2	261562M91	1	Plate	(E, F)
3	264029M91	1	Plate	(D) Left Hand
3	261665M91	1	Plate	(E) Left Hand
3	264040M91	1	Plate	(F) Right Hand
4	261568M1	5	Shoe	(D, E)
	261568M1	6	Shoe	(F)
11	353689X1	AR	Screw Unc	(D, E, F)
12	353691X1	AR	Screw Unc	(D, E, F)
13	353434X1	AR	Lock Washer	(D, E, F) 3/8"
14	353756X1	AR	Washer	(D, E, F) 3/8"
21	239746M1	2	Cowl	(D, E, F)
22	236125M91	2	Bearer	(D, E, F)
23	260683M94	1	Divider	(D, E, F) Left Hand
24	260676M94	1	Divider	(D, E, F) Right Hand
25	261408M1	1	Bearer	(D, E, F)
26	264446M91	1	Support	(A, D, E, F)
27	261729M1	1	Bearer	(B, D, E, F)
28	261728M1	1	Bearer	(B, D, E, F)
29	261726M91	1	Cowl	(D, E, F)
30	261409M91	1	Cowl	(D, E, F)
37	261623M1	2	Cowl	(C, D, E, F)
38	261624M1	2	Bearer	(C, D, E, F)
39	261625M1	2	Spring	(C, D, E, F)
40	261626M1	2	Cowl	(C, D, E, F)
41	365695X1	4	Pin	(C, D, E, F) 1/4 X 5-3/4"
46	355156X1	AR	Screw Unc	(C, D, E, F)
47	368371X1	AR	Washer	(C, D, E, F) 11/32 X 1-1/4 X .075"
48	375108X1	AR	Nut Unc	(C, D, E, F)
49	353725X1	AR	Bolt Unc	(A, D, E, F)
	353701X1	AR	Screw Unc	(B, D, E, F)
50	353439X1	AR	Lock Washer	(A, D, E, F)
	353432X1	AR	Lock Washer	(B, D, E, F) (A) From Serial or Engine Number 1859032098 (B) Up to Serial or Engine Number 1859032098 (C) PICK UP 13' (D) 13' (E) 14' (F) 15'

6

TABLE

1886 003-1



1st Print

651 331 M95 (Issue 1) 12/77

TABLE - RIGID CUTTER BAR

Item	Part Number	Qty	Description	Comments
				RIGID CUTTER BAR
1	264456M91	1	Table	(A, D)
	261487M91	1	Table	(B, D)
	264458M91	1	Table	(A, E)
	261672M91	1	Table	(B, E)
	264459M91	1	Table	(A, F)
	261500M91	1	Table	(B, F)
	264460M91	1	Table	(A, G)
	470142M91	1	Table	(B, G)
	264461M91	1	Table	(A, H)
	261746M91	1	Table	(B, H)
2	262013M92	1	Cam	(D, E, F, G, H)
3	261516M91	1	Plate	(D, E, F, G, H)
4	261517M91	1	Plate	(D, E, F, G, H)
5	262012M92	1	Cam	(D, E, F, G, H)
6	363307X1	2	Pin	(D, E, F, G, H) 3/16 X 1-1/18"
7	261641M1	1	Spring	(D, E, F, G, H) Left Hand
8	261640M1	1	Spring	(D, E, F, G, H) Right Hand
9	369141X1	1	Plate	(D, E, F, G, H)
10	369142X1	1	Plate	(D, E, F, G, H)
12	264022M91	1	Cowl	(D, E, F, G, H)
14	281984M91	1	Plate	(C, D, E, F, G, H) Left Hand
15	281983M91	1	Plate	(C, D, E, F, G, H) Right Hand
16	282020M1	2	Strap	(C, D, E, F, G, H)
17	272131M92	1	Plate	(D, E, F, G, H) Left Hand
18	272137M92	1	Plate	(D, E, F, G, H) Right Hand
19	272141M1	2	Plate	(D, E, F, G, H)
20	272142M1	2	Plate	(D, E, F, G, H)
31	261534M1	1	Anglepiece	(D) Left Hand
31	261674M1	1	Anglepiece	(E) Left Hand
31	261520M1	1	Anglepiece	(F) Left Hand
31	470138M1	1	Angle	(G) Left Hand
31	261770M1	1	Angle	(H) Left Hand
32	261535M1	1	Anglepiece	(D) Right Hand
32	261673M1	1	Anglepiece	(E) Right Hand
32	261518M1	1	Anglepiece	(F) Right Hand
32	470137M1	1	Angle	(G) Right Hand
32	261768M1	1	Angle	(H) Right Hand
33	261488M1	2	Plate	(D)
	261675M1	2	Plate	(E)
	261521M1	2	Strap	(F)
	470135M1	1	Strap	(G) Right Hand
33	470136M1	1	Strap	(G) Left Hand
33	261771M1	2	Strap	(H)
41	364352X1	AR	Bolt Unc	(D, E, F, G, H)
42	353677X1	AR	Screw Unc	(D, E, F, G, H)
43	353678X1	AR	Screw Unc	(D, E, F, G, H)
44	364533X1	AR	Bolt	(D, E, F, G, H)
45	353755X1	AR	Washer	(D, E, F, G, H) 5/16"
46	353446X1	AR	Lock Washer	(D, E, F, G, H)

**Buy Now**



Our support email:

[ebooklibonline@outlook.com](mailto:ebooklibonline@outlook.com)