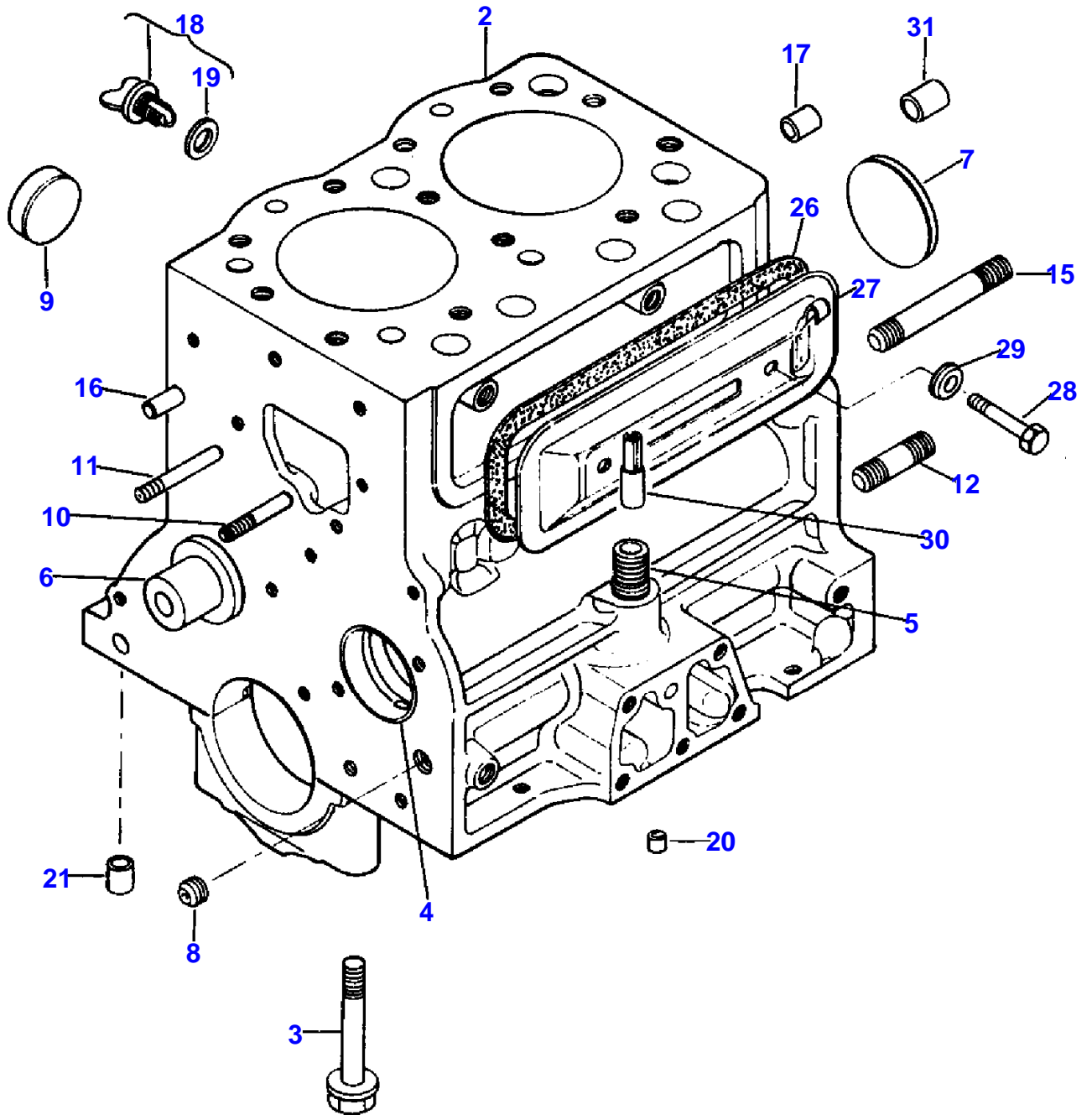


Page Title	Page Number
CYLINDER BLOCK - 210, 210-4	2
CAMSHAFT, TIMING GEAR - 210, 210-4	5
PISTONS, CONNECTING RODS, CRANKSHAFT AND FLYWHEEL - 210, 210-4	6
CYLINDER HEAD - 210, 210-4	9
LUBRICATING SYSTEM - 210, 210-4	10
GASKET SETS - 210, 210-4	13
RADIATOR AND WATER PUMP - 210, 210-4	14
AIR INTAKE AND EXHAUST - 210, 210-4	17
FUEL TANK AND SHUT-OFF - 210, 210-4	18
FUEL SYSTEM - 210, 210-4	21
THROTTLE LINKAGE - 210, 210-4	22
ELECTRICAL WIRING - 210, 210-4	25
ALTERNATOR - 210, 210-4	26
STARTER - LATE PRODUCTION	27B
STARTER - EARLY PRODUCTION	29
INSTRUMENT PANEL - 210, 210-4	30
INSTRUMENTS, SWITCHES AND HORN - 210, 210-4	33
LIGHTING - 210, 210-4	34
FRONT AXLE - TWO WHEEL DRIVE	37
FRONT AXLE - FOUR WHEEL DRIVE	38
FRONT AXLE - FOUR WHEEL DRIVE	41
FRONT AXLE - FOUR WHEEL DRIVE	42
FRONT AXLE - FOUR WHEEL DRIVE	45
STEERING - TWO WHEEL DRIVE	46
STEERING - FOUR WHEEL DRIVE	49
GEAR SHIFT AND CONTROLS - 210, 210-4	50
TRANSMISSION HOUSING - 210, 210-4	53
TRANSMISSION - TWO WHEEL DRIVE	54
TRANSMISSION - TWO WHEEL DRIVE	57
TRANSMISSION - FOUR WHEEL DRIVE	58
TRANSMISSION - FOUR WHEEL DRIVE	61
TRANSMISSION - FOUR WHEEL DRIVE	62
CLUTCH - 210, 210-4	65
DIFFERENTIAL HOUSING - 210, 210-4	66
GASKET KITS - POWER TRAIN	69
DIFFERENTIAL - 210, 210-4	70
DIFFERENTIAL LOCK - 210, 210-4	73
P.T.O. AND HI-LO RANGE CONTROL - 210, 210-4	74
POWER TAKE-OFF - SHAFT AND SHAFT EXTENSION	77
FRONT DRIVE CONTROL - 210-4	78
REAR AXLE - 210, 210-4	81
CLUTCH AND BRAKE PEDALS - 210, 210-4	82
BRAKES - 210, 210-4	85
HYDRAULIC PUMP AND LINES - 210, 210-4	86
HYDRAULIC PUMP - 210, 210-4	89
HYDRAULIC LIFT COVER - 210, 210-4	90
HYDRAULIC LIFT LINKAGE - 210, 210-4	93
HYDRAULIC CONTROL VALVE AND LIFT HOUSING COVER - 210, 210-4	94
HYDRAULIC LIFT CYLINDER AND PISTON - 210, 210-4	97
HOOD AND GRILLE - 210, 210-4	98
MAIN FRAME AND WEIGHT CARRIER	99C
MAIN FRAME AND WEIGHT CARRIER	101
FENDERS AND STEP PLATES - 210, 210-4	102
P.T.O. GUARD AND DRAWBAR - 210, 210-4	105
LIFT LINKAGE - THREE POINT HITCH	106
SEAT - 210, 210-4	109
WHEELS AND WHEEL WEIGHTS - FRONT AND REAR	110
R.O.P.S. AND S.M.V. - 210, 210-4	113
EMBLEMS AND LABELS - 210, 210-4	114
PAINT AND OIL - 210, 210-4	117
MANIFOLD BLOCK KIT - 210, 210-4	118
ACCESSORIES - 210, 210-4	121
ACCESSORIES - 210, 210-4	122
ELECTRIC P.T.O. CLUTCH - 2878901	125
ELECTRIC P.T.O. CLUTCH - 10481A91	125A
AUXILIARY HYDRAULICS	127

TABLE OF CONTENT

SINGLE SPOOL VALVE	128	00
TWO SPOOL VALVE - LATE PRODUCTION	131	
AUXILIARY VALVE KIT - 10553A91	132	
AUXILIARY VALVE - 210, 210-4	135	

2746 001



MASSEY FERGUSON

MF 210/210-4 COMPACT TRACTOR - 651425EA

651425EA

CYLINDER BLOCK - 210, 210-4

2

Item	Part Number	Qty	Description	Comments
		1	Kit	210, 210-4 ENGINE (A)
2	3280523M91	1	Block	
3	3280112M1	6	Bolt	
4	3280117M1	2	Bearing	
5	3280551M1	1	Connector	
6	3280118M1	1	Shaft	
7	3280119M1	1	Plug	Diameter 58MM
8	3280120M1	2	Plug	
9	3280121M1	3	Plug	Diameter 40MM
10		3	Stud	Not serviced, order 390789X1
11	390789X1	2	Stud	
12	3280940M1	4	Stud	
15	3280944M1	4	Stud	
16	1440690X1	2	Pin	
17	3280932M1	1	Pin	
18	3280102M1	1	Plug	
19	3280784M1	1	Gasket	
20	3280115M1	2	Plug	
21	3280500M1	2	Pin	
26	3280093M1	1	Gasket	
27	3280550M1	1	Cover	
28	1440712X1	2	Screw	
29	3280072M1	2	Washer	
30	3280549M1	1	Rod	
31	3280934M1	1	Pin	(A) NOT SERVICED



**MASSEY FERGUSON****MF 210/210-4 COMPACT TRACTOR - 651425EA**

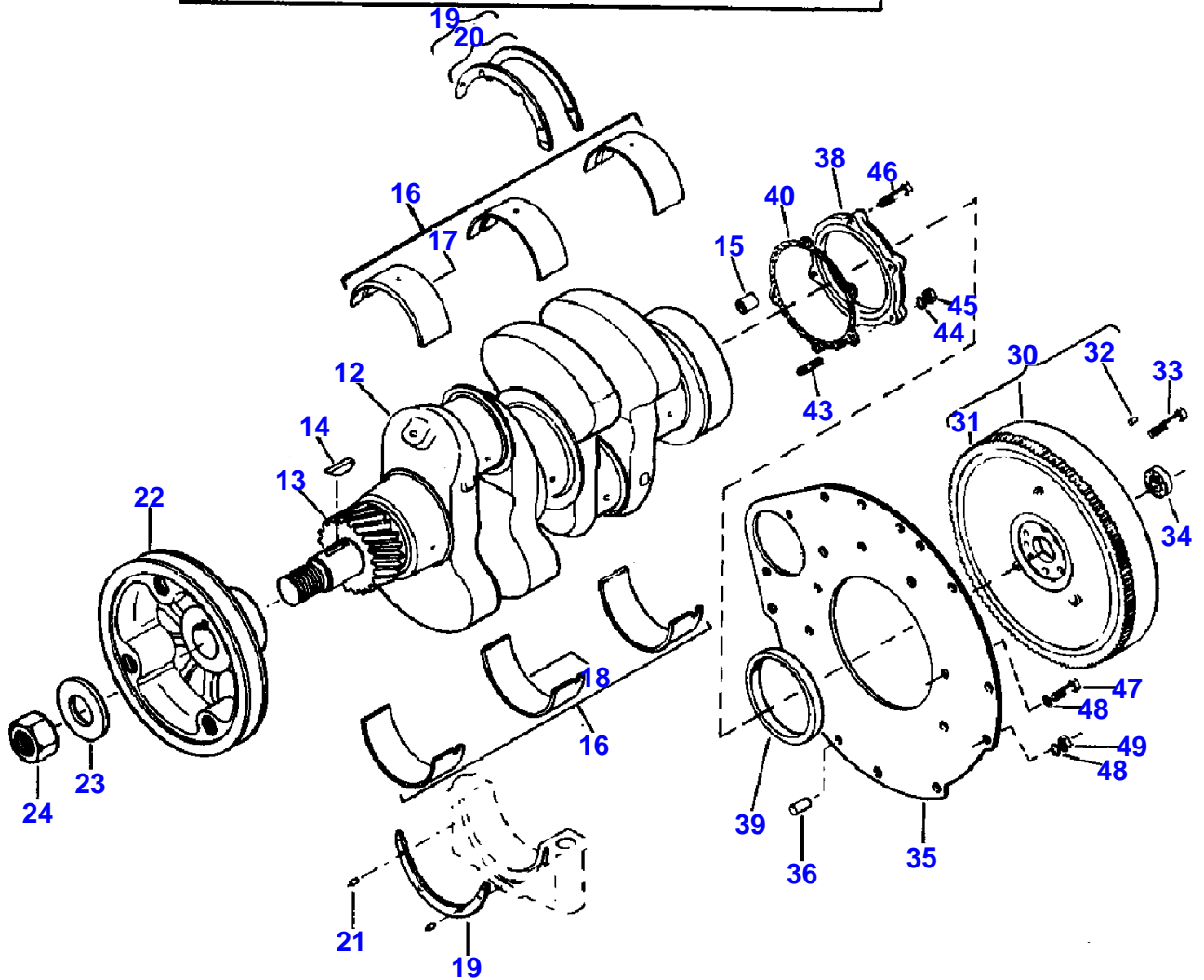
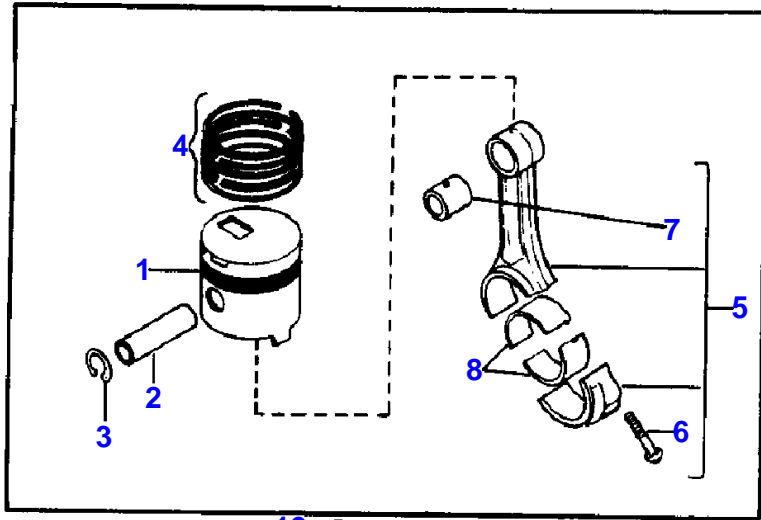
651425EA

**CAMSHAFT, TIMING GEAR - 210, 210-4**

5

Item	Part Number	Qty	Description	Comments
				210, 210-4
1	3282486M1	1	Camshaft	
2	3280929M1	1	Key	
3	3280154M1	1	Plate	
4	339123X1	2	Screw Metric	
5	3280153M1	1	Gear	
6	1442558X1	1	Bolt	
7	339376X1	1	Lock Washer	
8	3280148M1	1	Washer	
14	3280149M91	1	Gear	
15		1	Gear	Not serviced, order 3280149M91
16	3280151M1	1	Bearing	
17	3280146M1	1	Washer	
18	1442558X1	1	Bolt	
19	339376X1	1	Lock Washer	
23	3280100M91	1	Cover	
24		1	Cover	Not serviced, order 3280100M91
25	3280091M1	1	Seal	
26	391000X1	4	Stud	
27	3280092M1	1	Point	
28	3280103M91	1	Plate	
29	3280101M1	1	Injector	
30	3004509X1	1	Plough Bolt	
31	3280090M1	1	Gasket	
32	3280089M1	1	Gasket	
33	391000X1	3	Stud	
34	339123X1	3	Screw Metric	
35	339374X1	3	Lock Washer	
36	3280196M1	1	Bracket	
37	339368X1	1	Bolt Metric	
38	339374X1	10	Lock Washer	
39	1440203X1	8	Nut Metric	
40	339337X1	4	Screw Metric	
41	339374X1	4	Lock Washer	
42	339011X1	2	Bolt Metric	
43	339291X1	5	Bolt Metric	
44	390972X1	14	Washer Metric	

2746 003



Item	Part Number	Qty	Description	Comments
				210, 210-4
1	3280524M1	2	Piston	
	3280921M1	2	Piston	
2	3280131M1	2	Pin	
3	3280132M1	4	Ring	
4	3280133M1	2	Segment	
	3280134M1	2	Segment	
5	3281925M91	2	Rod End	
6	3280573M1	2	Bolt	
7	3280138M1	1	Bush	
8	3280135M1	4	Bearing	
	3280136M1	4	Bearing	
	3280137M1	4	Bearing	
12	3280143M91	1	Crankshaft	
13	3280144M1	1	Gear	
14	3280001M1	2	Key	
15	3280931M1	1	Pin	
16	3280122M1	1	Kit, Bearing	
17		3	Bearing	Not serviced, order 3280122M1
18		3	Bearing	Not serviced, order 3280122M1
16	3280123M1	1	Kit, Bearing	
17		3	Bearing	Not serviced, order 3280123M1
18		3	Bearing	Not serviced, order 3280123M1
16	3280124M1	1	Kit, Bearing	
17		3	Bearing	Not serviced, order 3280124M1
18		3	Bearing	Not serviced, order 3280124M1
19	3280125M1	1	Parts Pack	
20		4	Flange	Not serviced, order 3280125M1
19	3280978M1	1	Parts Pack	
20		4	Flange	Not serviced, order 3280978M1
21	3280947M1	4	Pin	
22	3280525M1	1	Pulley	
23	3280140M1	1	Washer	
24	1441611X1	1	Nut Metric	
30	3280142M1	1	Flywheel	
31	3280141M1	1	Gear	
32	3280930M1	3	Pin	
33	1442558X1	6	Bolt	
34	3436488M1	1	Bearing	(A)
	1440487X1	1	Bearing Assy	(B)
35	3280097M1	1	Plate	
36	3280933M1	1	Pin	
38	3280095M1	1	Cover	
39	3280098M1	1	Seal	
40	3280096M1	1	Gasket	
43	391001X1	3	Stud	
44	339374X1	3	Lock Washer	
45	1440203X1	3	Nut Metric	
46	339337X1	3	Screw Metric	
47	339187X1	3	Bolt Metric	
48	339369X1	7	Lock Washer	
49	1440218X1	4	Nut Metric	

(A)

USED 2 WHEEL DRIVE TRACTOR SERIAL NUMBER 04933 AND UP.

USED 4 WHEEL DRIVE TRACTOR SERIAL NUMBER 02289 AND UP.

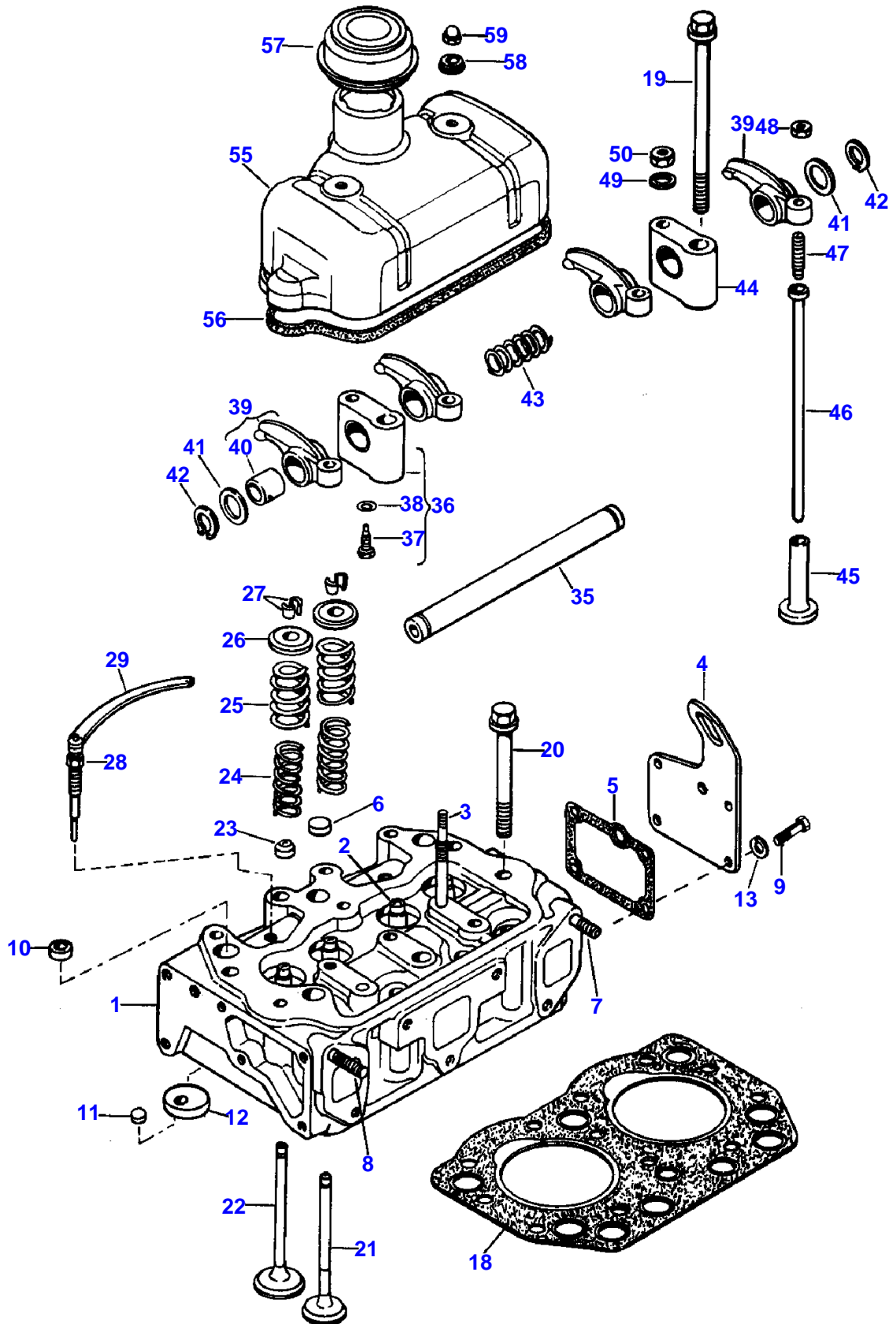
(B)

USED PRIOR TO 2 WHEEL DRIVE TRACTOR SERIAL NUMBER 04933.

USED PRIOR TO 4 WHEEL DRIVE TRACTOR SERIAL NUMBER 02289.



2746 004 -2



CYLINDER HEAD - 210, 210-4

Item	Part Number	Qty	Description	Comments
				210, 210-4
1	3280519M91	1	Head	
2	3280057M1	4	Guide	
3	3280054M1	2	Stud	
4	3280055M1	1	Cover	
5	3280056M1	1	Gasket	
6	3280058M1	3	Plug	Diameter 18MM
7	3280059M1	6	Stud	
8	3280060M1	1	Stud	
9	390379X1	4	Bolt Metric	
10	3280312M1	4	Plug	Diameter 20MM
11	3280547M1	2	Pin	
12	3280923M1	2	Valve	
13	353446X1	4	Lock Washer	
18	3280518M1	1	Gasket	
19	3280053M1	2	Bolt	
20	3280052M1	10	Bolt	
21	3280046M1	2	Valve	
22	3281972M1	2	Valve	
23	3280051M1	4	Seal	
24	3280049M1	4	Spring	
25	3280048M1	4	Spring	
26	3280050M1	4	Retainer	
27	3280023M1	8	Lock	
28	3280558M1	2	Thermostat	
29	3280559M1	1	Plate	
		1	Kit	ROCKER ORDER COMPONENTS
35	3280062M1	1	Shaft	
36	3280064M91	1	Bracket	
37	3280068M1	1	Bolt	
38	1443847X1	1	Ring	
39	3280063M91	4	Arm	
40	3280975M1	1	Bush	
41	3280069M1	2	Plate	
42	1441970X1	2	Circlip	
43	3280066M1	1	Spring	
44	3280065M1	1	Bracket	
45	3280145M1	4	Valve	
46	3280147M1	4	Stem	
47	3280067M1	4	Bolt	
48	3280070M1	4	Nut	
49	339376X1	2	Lock Washer	
50	1441409X1	2	Nut Metric	
55	3280647M91	1	Cover	
56	3280071M1	1	Gasket	
57	3280074M1	1	Cap	
58	3280072M1	2	Washer	
59	3005908X1	2	Nut	

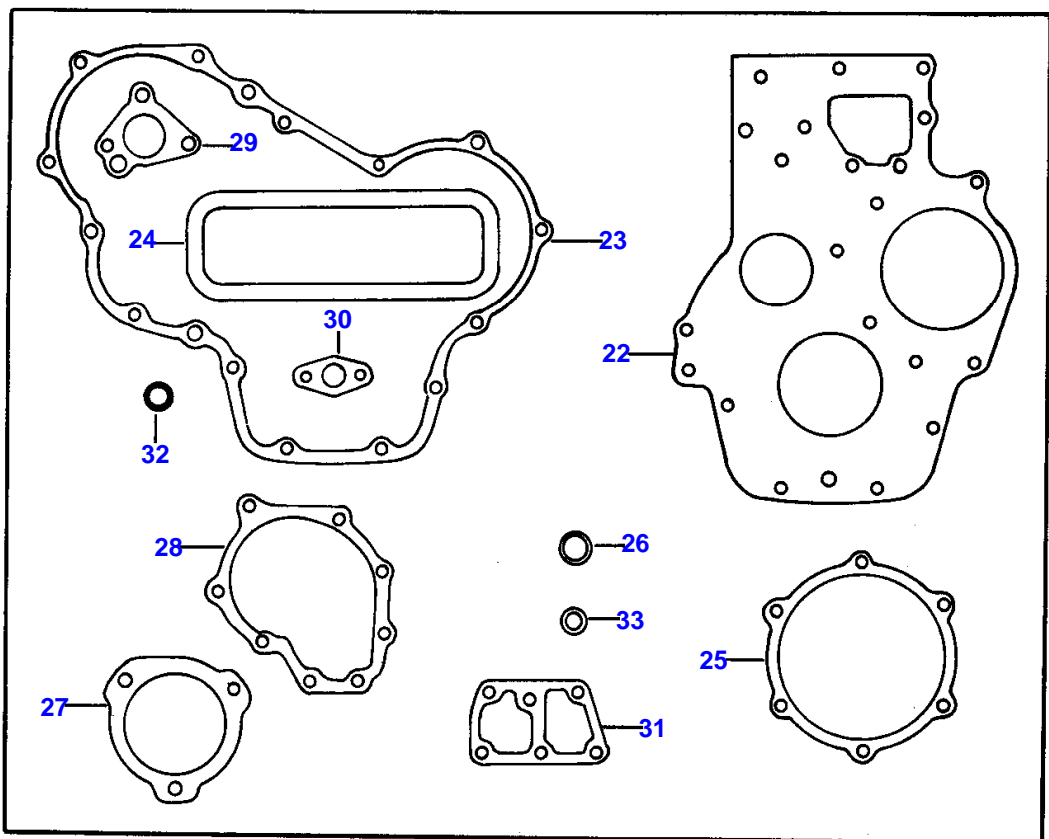
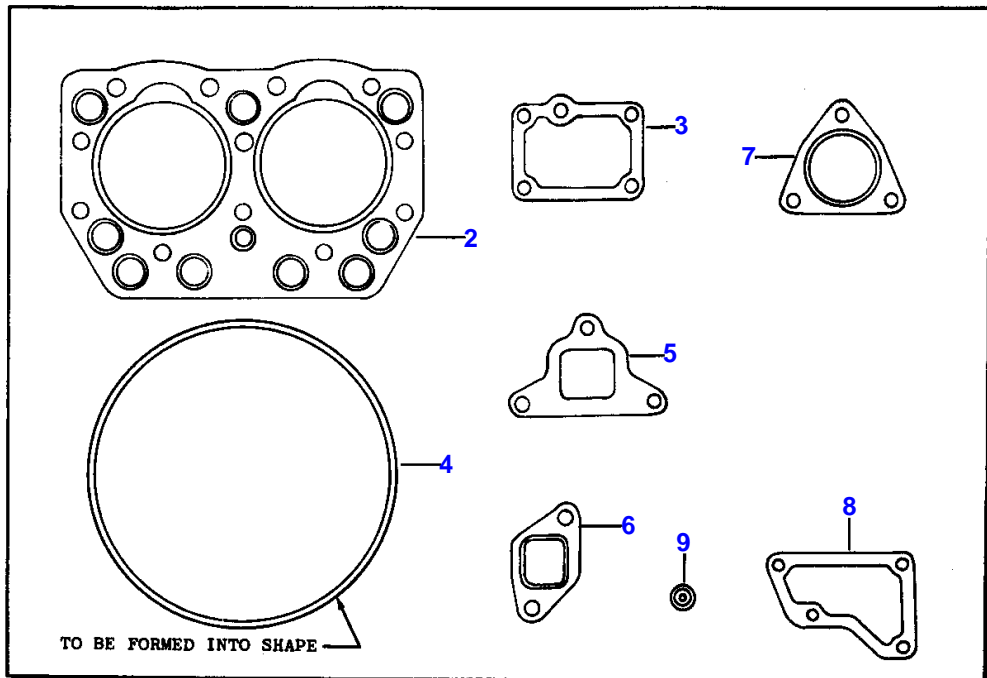


LUBRICATING SYSTEM - 210, 210-4

Item	Part Number	Qty	Description	Comments
				210, 210-4
1	3280189M91	1	Head	
2		1	Housing	Not serviced, order 3280189M91
3	3280191M1	1	Insert	
4	3280192M1	1	Spring	
5	3280193M1	1	Bolt	
6	3280194M1	1	O Ring	
7	3280187M1	1	Gasket	
8	1440712X1	3	Screw	
9	391898X1	2	Bolt Metric	
10	390972X1	5	Washer Metric	
11	353446X1	5	Lock Washer	
12	3280185M91	1	Filter	
13	3280195M1	1	Tube	
14	1444745X1	4	Ring	
15	3280188M1	2	Bolt	
16	3280026M1	1	Switch,Indirect	
	3280556M91	1	Oil Pump	
21	3280179M1	1	Body	
22	3280180M1	1	Cover	
23	3280557M91	1	Shaft	
24		1	Shaft	Not serviced, order 3280557M91
25	3280181M1	1	Parts Pack	
26	3280184M1	1	Pin	
27	3280183M1	1	Pin	
28	3280182M1	1	Gear	
29	3437357M1	2	Screw	
30	353441X1	2	Lock Washer	
31	3280177M1	1	Gasket	
32	3280915M1	1	Tube	210
33	3281378M91	1	Tube	210-4
34	3282201M1	1	Gasket	210
	3282201M1	1	Gasket	210-4
35	339123X1	2	Screw Metric	
36	353446X1	2	Lock Washer	
37	339132X1	3	Screw	
38	353446X1	3	Lock Washer	
43	3282441M91	1	Housing	210 (A)
43	3280094M91	1	Housing	210 (B)
44	3281926M1	6	Stud	210 (A)
44	3280945M1	6	Stud	210 (B)
45	3280498M1	1	Adaptor	210
46	391001X1	3	Stud	210
47	3281904M91	1	Housing	210-4
48	3281926M1	6	Stud	210-4
49	3280498M1	1	Adaptor	210-4
50	391001X1	3	Stud	210-4
51	3280104M1	1	Plug	
52	3280105M1	1	Gasket	
53	3280499M1	1	Gauge	210
54	3281377M1	1	Gauge	210-4
55	339084X1	7	Bolt Metric	210
	339084X1	9	Bolt Metric	210-4
56	353446X1	13	Lock Washer	
57	3281144M1	6	Screw	210 (A)
57	339008X1	5	Bolt Metric	210 (B)
58	3281144M1	4	Screw	210-4 (A)

USED MF 210 TRACTOR SERIAL NUMBER 01245 AND UP.  
(B)  
USED PRIOR TO MF 210 TRACTOR SERIAL NUMBER 01245.

2746 006-1



**Buy Now**



Our support email:

[ebooklibonline@outlook.com](mailto:ebooklibonline@outlook.com)