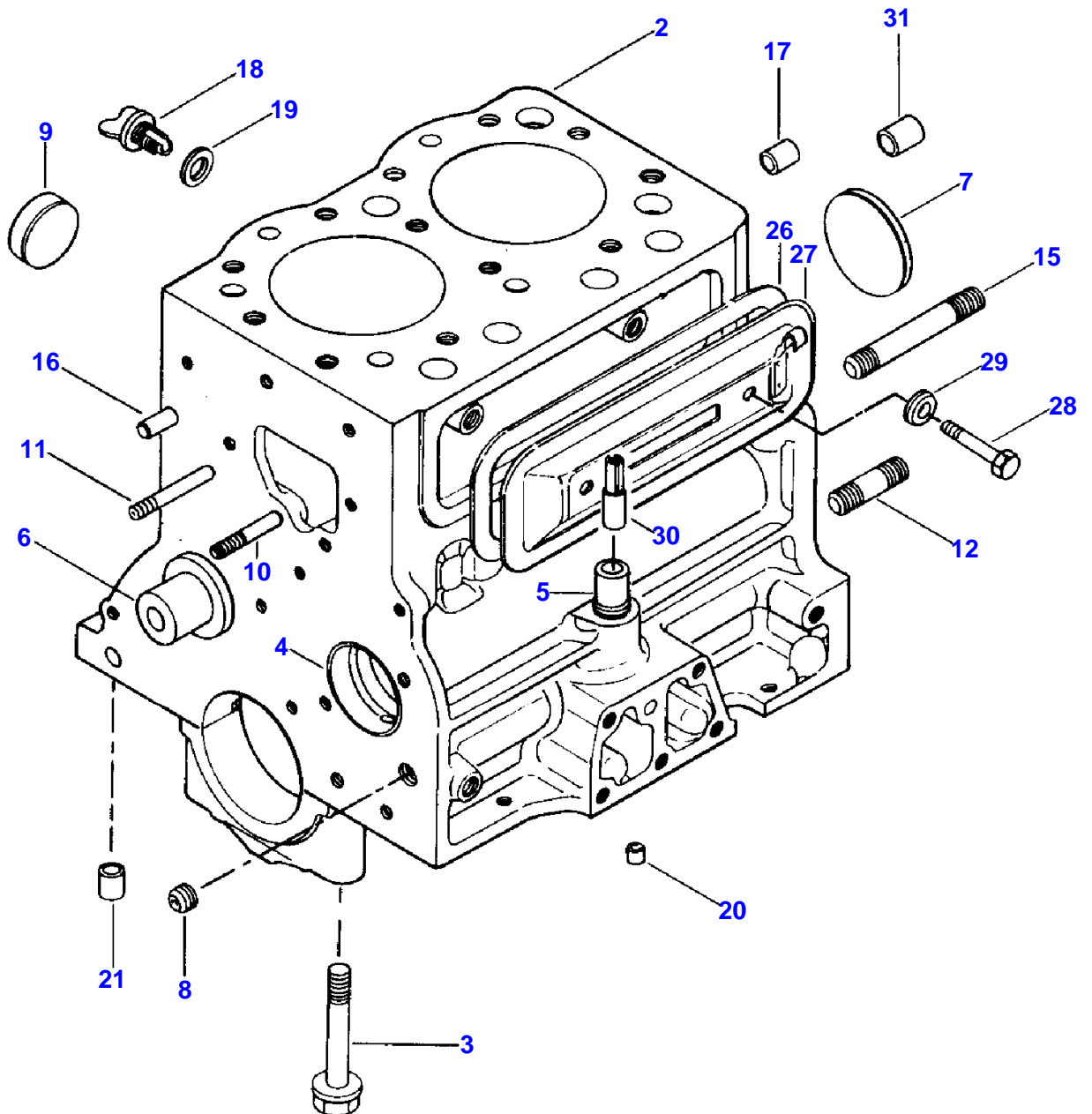


Page Title	Page Number
CYLINDER BLOCK - 220, 220-4	2
CAMSHAFT AND TIMING GEAR - 220, 220-4	5
PISTONS, CONNECTING RODS, CRANKSHAFT AND FLYWHEEL - 220, 220-4	6
CYLINDER HEAD - 220, 220-4	9
LUBRICATING SYSTEM - 220, 220-4	10
GASKET KITS (ENGINE) - 220, 220-4	13
RADIATOR AND WATER PUMP - 220, 220-4	14
AIR INTAKE AND EXHAUST - 220, 220-4	17
FUEL TANK AND SHUT-OFF - 220, 220-4	18
FUEL SYSTEM - 220, 220-4	21
THROTTLE LINKAGE - 220, 220-4	22
ELECTRICAL WIRING - 220, 220-4	25
ALTERNATOR (35 AMP.) - 220, 220-4	26
STARTER - LATE PRODUCTION	29
STARTER - EARLY PRODUCTION	30
INSTRUMENT PANEL - 220, 220-4	33
INSTRUMENTS, SWITCHES AND HORN - 220, 220-4	34
LIGHTING - 220, 220-4	37
FRONT AXLE - TWO WHEEL DRIVE	38
FRONT AXLE - FOUR WHEEL DRIVE	41
FRONT AXLE - FOUR WHEEL DRIVE	42
FRONT AXLE - FOUR WHEEL DRIVE	45
FRONT AXLE - FOUR WHEEL DRIVE	46
STEERING - TWO WHEEL DRIVE	49
STEERING - FOUR WHEEL DRIVE	50
GEAR SHIFT AND CONTROLS - 220, 220-4	53
TRANSMISSION HOUSING - 220, 220-4	54
TRANSMISSION - TWO WHEEL DRIVE	57
TRANSMISSION - TWO WHEEL DRIVE	58
TRANSMISSION - FOUR WHEEL DRIVE	61
TRANSMISSION - FOUR WHEEL DRIVE	62
TRANSMISSION - FOUR WHEEL DRIVE	65
CLUTCH - 220, 220-4	66
DIFFERENTIAL HOUSING - 220, 220-4	69
GASKET KITS - POWER TRAIN	70
DIFFERENTIAL - 220, 220-4	73
DIFFERENTIAL LOCK - 220, 220-4	74
P.T.O. AND HI-LO RANGE CONTROL - 220, 220-4	77
POWER TAKE OFF - SHAFT AND SHAFT EXTENSION	78
FRONT DRIVE CONTROL - 220-4	81
REAR AXLE - 220, 220-4	82
CLUTCH AND BRAKE PEDALS - 220, 220-4	85
BRAKES - 220, 220-4	86
HYDRAULIC PUMP AND LINES - 220, 220-4	89
HYDRAULIC PUMP - 220, 220-4	90
HYDRAULIC LIFT COVER AND LIFT LEVER - 200, 200-4	93
DRAFT CONTROL - 220, 220-4	94
DRAFT CONTROL - 220, 220-4	97
HYDRAULIC CONTROL VALVE AND LIFT HOUSING COVER - 220, 220-4	98
HYDRAULIC LIFT CYLINDER AND PISTON - 220, 220-4	101
HOOD AND GRILLE - 220, 220-4	102
FRONT FRAME AND WEIGHT CARRIER - 220, 220-4	105
FENDERS AND STEP PLATES - 220, 220-4	106
P.T.O. GUARD AND DRAWBAR - 220, 220-4	109
LIFT LINKAGE - THREE POINT HITCH	110
SEAT - 220, 220-4	113
WHEELS AND WHEEL WEIGHTS - 220, 220-4	114
R.O.P.S., SEAT BELTS AND S.M.V. - 220, 220-4	117
EMBLEMS AND LABELS - 220, 220-4	118
PAINT AND OIL - 220, 220-4	121
MANIFOLD BLOCK KIT - 220, 220-4	122
ACCESSORIES - 220, 220-4	125
ACCESSORIES - 220, 220-4	126
ELECTRIC P.T.O. CLUTCH - (2878901), LATE PRODUCTION	129
ELECTRIC P.T.O. CLUTCH - (10481A91) EARLY PRODUCTION	130
AUXILIARY HYDRAULICS	133

TABLE OF CONTENT

SINGLE SPOOL VALVE - SINGLE SPOOL	134	00
TWO SPOOL VALVE - 2 SPOOL	137	
AUXILIARY VALVE KIT - 220, 220-4	138	
AUXILIARY VALVE - 220, 220-4	141	

2746-500



MASSEY FERGUSON

MF 220/220-4 COMPACT TRACTOR - 651426EA

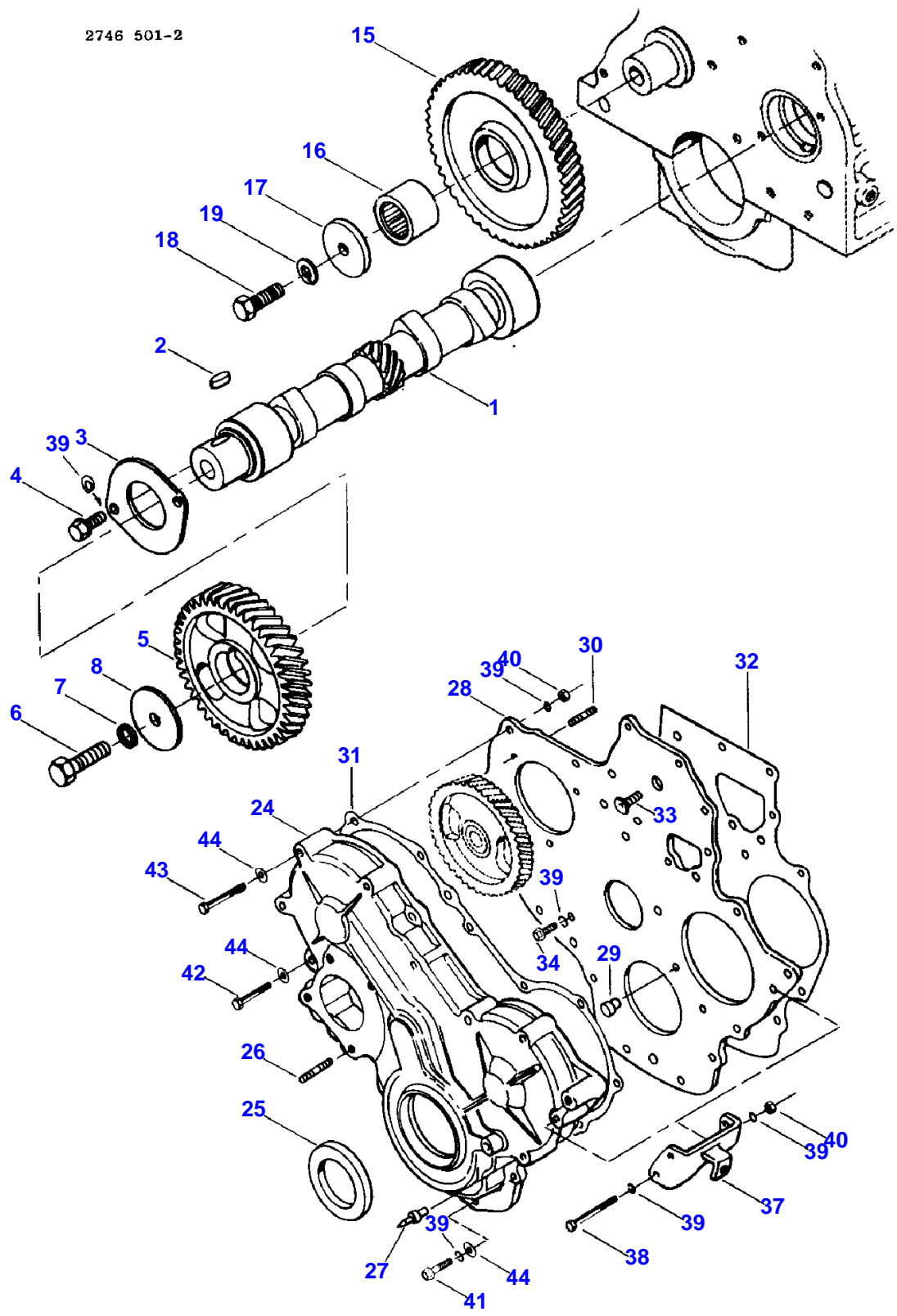
651426EA

CYLINDER BLOCK - 220, 220-4

2

Item	Part Number	Qty	Description	Comments
		1	Kit	220, 220-4 DIESEL ENGINE (A)
	3439720M91	1	Short Engine	
2	3282289M91	1	Cylinder Block	
3	3280112M1	6	Bolt	
4	3280117M1	2	Bearing	
5	3280551M1	1	Connector	
6	3280118M1	1	Shaft	
7	3280119M1	1	Plug	Diameter 58MM
8	3280120M1	2	Plug	Diameter 14MM
9	3280121M1	3	Plug	Diameter 40MM
10	390789X1	3	Stud	
11	390789X1	2	Stud	
12	3280940M1	4	Stud	
15	3280944M1	4	Stud	
16	1440690X1	2	Pin	
17	3280932M1	1	Pin	
18	3280102M1	1	Plug	
19	3280784M1	1	Gasket	
20	3280115M1	2	Plug	
21	3280500M1	2	Pin	
26	3280093M1	1	Gasket	
27	3280550M1	1	Cover	
28	1440712X1	2	Screw	
29	3280072M1	2	Washer	
30	3280549M1	1	Rod	
31	3280934M1	1	Pin	

(A)
NOT SERVICED



MASSEY FERGUSON

MF 220/220-4 COMPACT TRACTOR - 651426EA

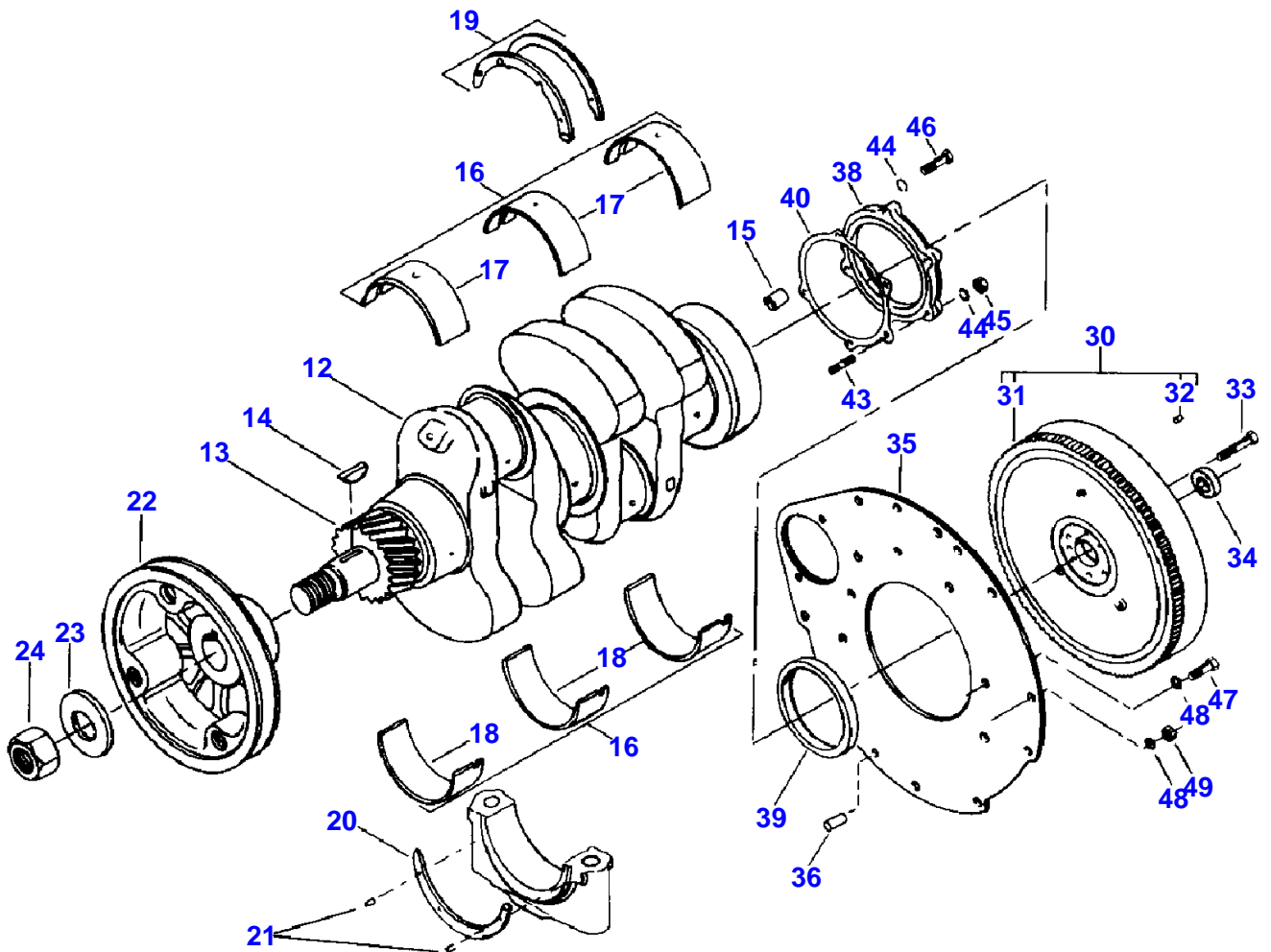
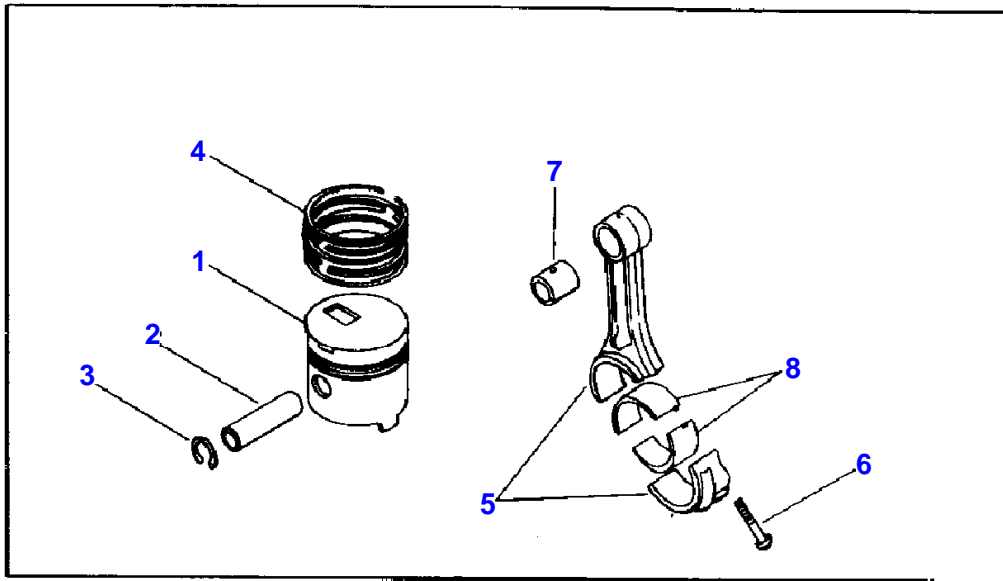
651426EA

CAMSHAFT AND TIMING GEAR - 220, 220-4

5

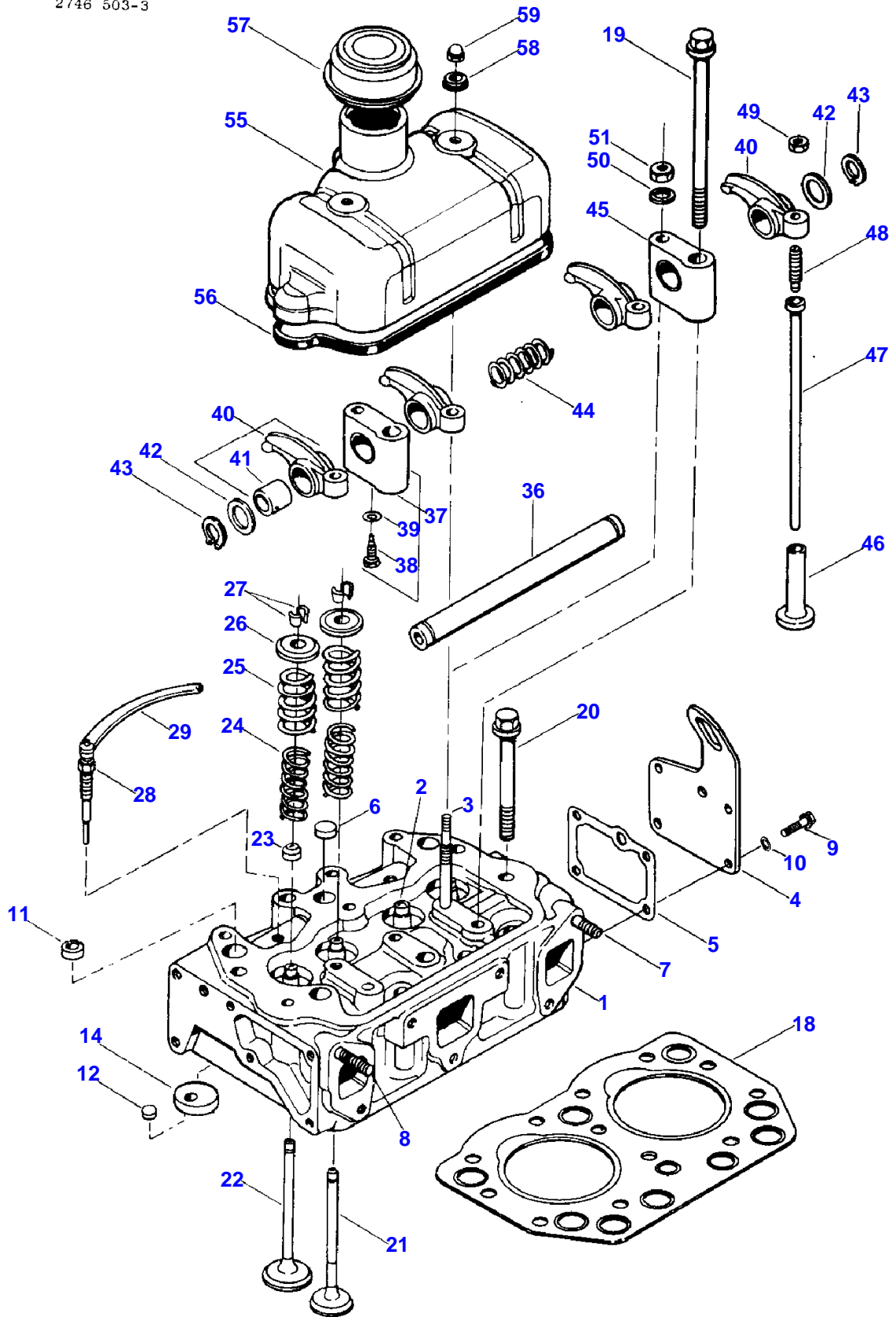
Item	Part Number	Qty	Description	Comments
				220, 220-4
1	3282486M1	1	Camshaft	
2	3280929M1	1	Key	
3	3280154M1	1	Plate	
4	339123X1	2	Screw Metric	
5	3280153M1	1	Gear	
6	1442558X1	1	Bolt	
7	339376X1	1	Lock Washer	
8	3280148M1	1	Washer	
	3280149M91	1	Gear	
		1	Gear	Not serviced, order 3280149M91
16	3280151M1	1	Bearing	
17	3280146M1	1	Washer	
18	1442558X1	1	Bolt	
19	339376X1	1	Lock Washer	
	3280100M91	1	Cover	
24		1	Cover	Not serviced, order 3280100M91
25	3280091M1	1	Seal	
26	391000X1	4	Stud	
27	3280092M1	1	Point	
28	3280103M91	1	Plate	
29	3280101M1	1	Injector	
30	391000X1	3	Stud	
31	3280090M1	1	Gasket	
32	3280089M1	1	Gasket	
33	3004509X1	1	Plough Bolt	
34	339123X1	3	Screw Metric	
37	3280196M1	1	Bracket	
38	339368X1	1	Bolt Metric	
39	353446X1	AR	Lock Washer	
40	1440203X1	8	Nut Metric	
41	339008X1	4	Bolt Metric	
42	339011X1	2	Bolt Metric	
43	339291X1	5	Bolt Metric	
44	390972X1	14	Washer Metric	

2746 302-1



Item	Part Number	Qty	Description	Comments
				220, 220-4
1	3281193M1	2	Piston	
	3281194M1	2	Piston	
2	3281148M1	2	Piston Pin	
3	3280132M1	4	Ring	
4	3439721M91	2	Ring	
	3281196M91	2	Kit, Ring	
5	3281925M91	2	Rod End	
6	3280573M1	2	Bolt	
7	3280138M1	1	Bush	
8	3280135M1	4	Bearing	
	3280136M1	4	Bearing	
	3280137M1	4	Bearing	
12	3281149M91	1	Crankshaft	
13	3280144M1	1	Gear	
14	3280001M1	2	Key	
15	3280931M1	1	Pin	
16	3280122M1	1	Kit, Bearing	
17		3	Bearing	Not serviced, order 3280122M1
18		3	Bearing	Not serviced, order 3280122M1
16	3280123M1	1	Kit, Bearing	
17		3	Bearing	Not serviced, order 3280123M1
18		3	Bearing	Not serviced, order 3280123M1
16	3280124M1	1	Kit, Bearing	
17		3	Bearing	Not serviced, order 3280124M1
18		3	Bearing	Not serviced, order 3280124M1
19	3280125M1	1	Parts Pack	
20		4	Flange	Not serviced, order 3280125M1
19	3280978M1	1	Parts Pack	
20		4	Flange	Not serviced, order 3280978M1
21	3280947M1	4	Pin	
22	3280525M1	1	Pulley	
23	3280140M1	1	Washer	
24	1441611X1	1	Nut Metric	
30	3280142M1	1	Flywheel	
31	3280141M1	1	Gear	
32	3280930M1	3	Pin	
33	1442558X1	6	Bolt	
34	3436488M1	1	Bearing	
35	3280097M1	1	Plate	
36	3280933M1	1	Pin	
38	3280095M1	1	Cover	
39	3280098M1	1	Seal	
40	3280096M1	1	Gasket	
43	391001X1	3	Stud	
44	353446X1	3	Lock Washer	
45	1440203X1	3	Nut Metric	
46	339008X1	3	Bolt Metric	
47	339187X1	3	Bolt Metric	
48	339369X1	7	Lock Washer	
49	1440218X1	4	Nut Metric	

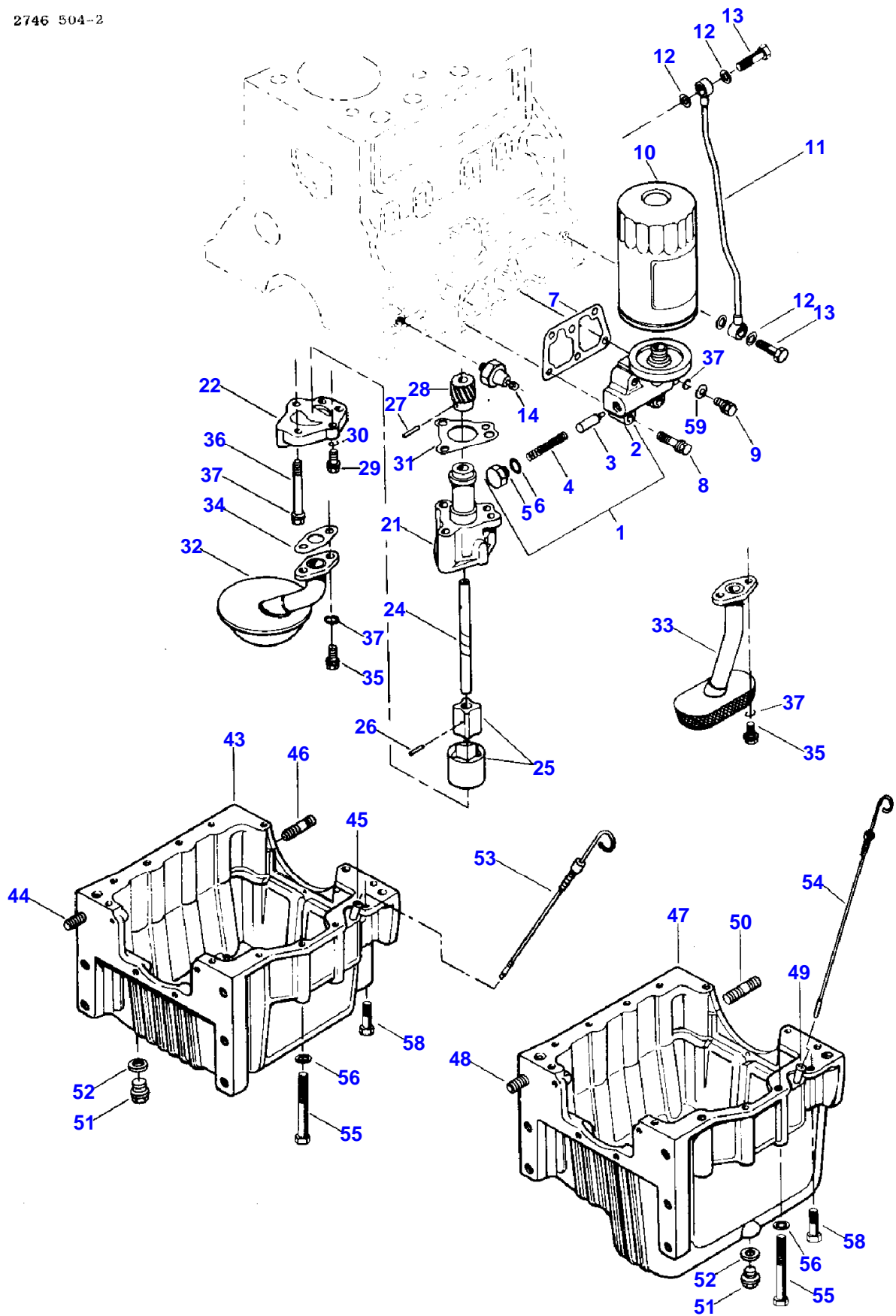
2746 503-3



CYLINDER HEAD - 220, 220-4

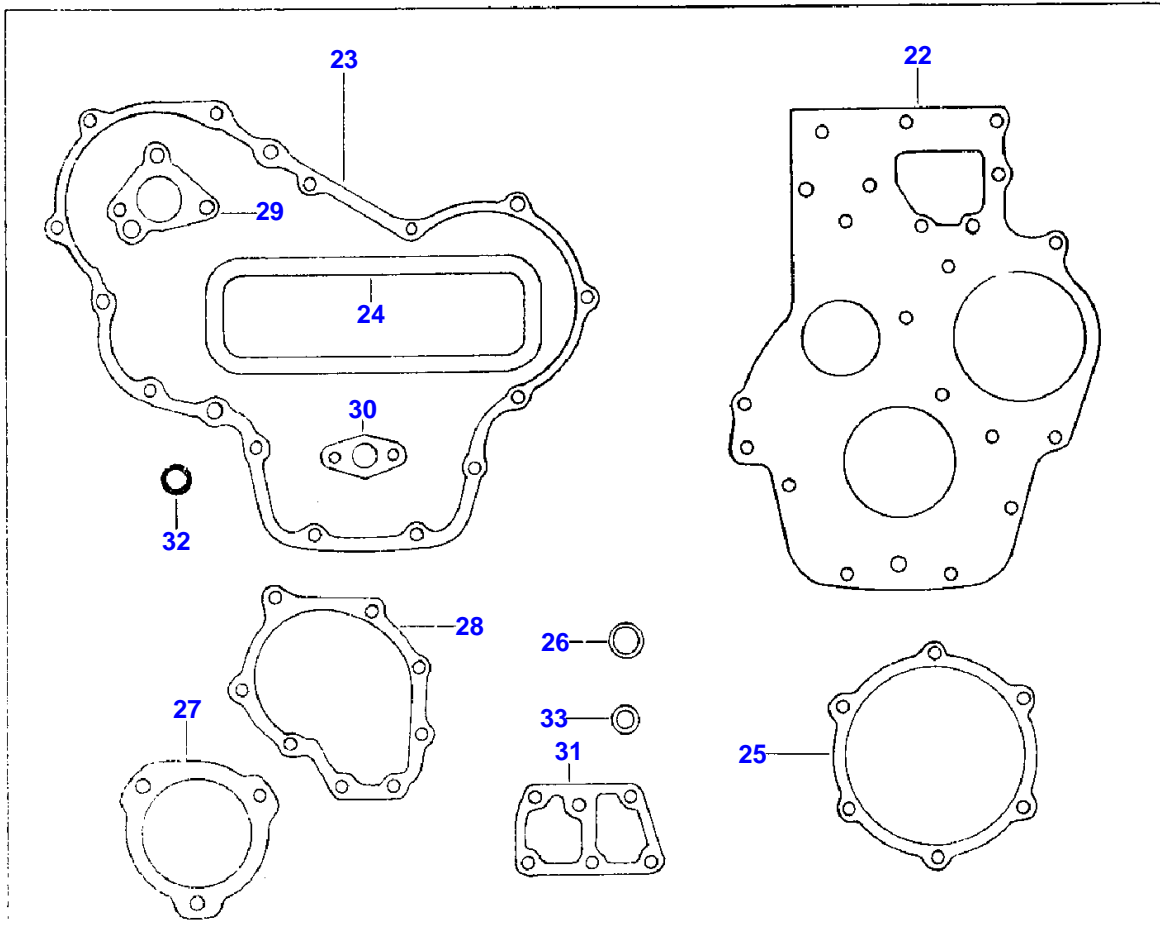
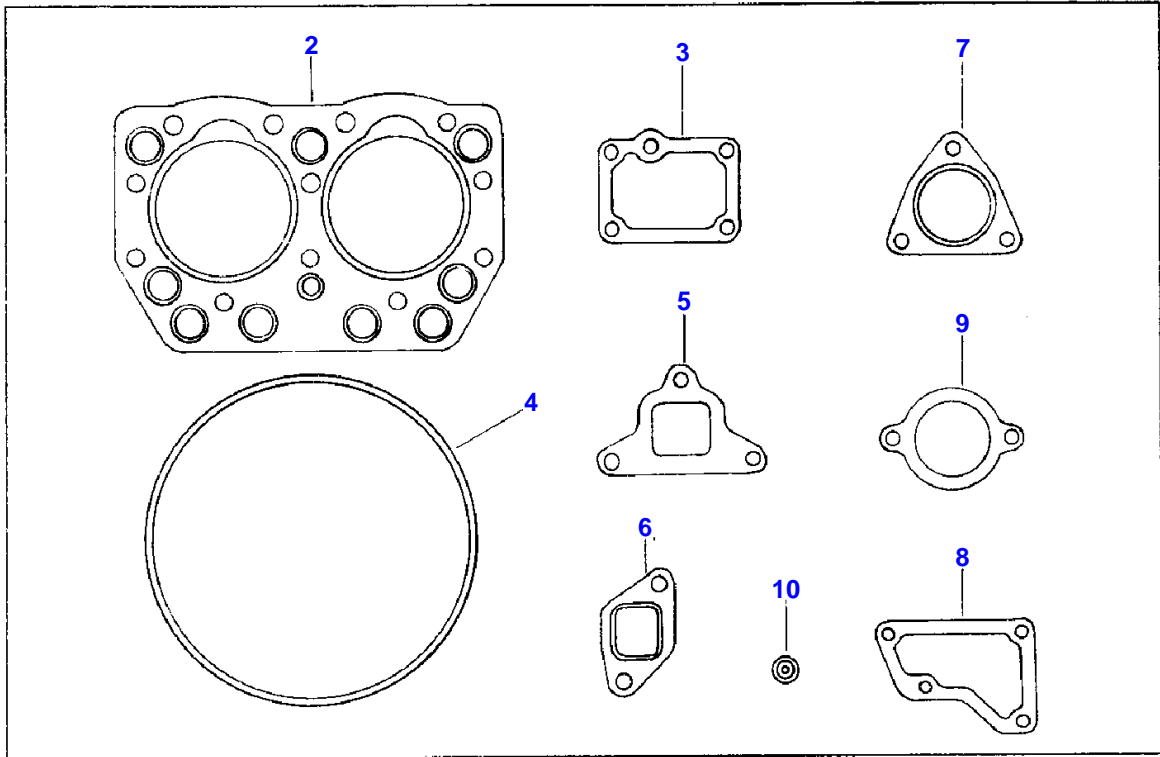
Item	Part Number	Qty	Description	Comments
				220, 220-4
1	3281190M91	1	Cylinder Head	
2	3280057M1	4	Guide	
3	3280054M1	2	Stud	
4	3280055M1	1	Cover	
5	3280056M1	1	Gasket	
6	3280058M1	3	Plug	Diameter 18MM
7	3280059M1	6	Stud	
8	3280060M1	1	Stud	
9	390379X1	4	Bolt Metric	
10	353446X1	4	Lock Washer	
11	3280312M1	4	Plug	Diameter 20MM
12	3280547M1	2	Pin	
14	3280923M1	2	Valve	
18	3284919M1	1	Gasket	
19	3280053M1	2	Bolt	
20	3280052M1	10	Bolt	
21	3280046M1	2	Valve	
22	3281972M1	2	Valve	
23	3280051M1	4	Seal	
24	3280049M1	4	Spring	
25	3280048M1	4	Spring	
26	3280050M1	4	Retainer	
27	3280023M1	8	Lock	
28	3280558M1	2	Thermostat	
29	3280559M1	1	Plate	
	3280061M91	1	Valve	
36	3280062M1	1	Shaft	
37	3280064M91	1	Bracket	
38	3280068M1	1	Bolt	
39	1443847X1	1	Ring	
40	3280063M91	4	Arm	
41	3280975M1	1	Bush	
42	3280069M1	2	Plate	
43	1441970X1	2	Circlip	
44	3280066M1	1	Spring	
45	3280065M1	1	Bracket	
46	3280145M1	4	Valve	
47	3280147M1	4	Stem	
48	3280067M1	4	Bolt	
49	3280070M1	4	Nut	
50	339376X1	2	Lock Washer	
51	1441409X1	2	Nut Metric	
55	3281587M91	1	Cover	
56	3280071M1	1	Gasket	
57	3280074M1	1	Cap	
58	3280072M1	2	Washer	
59	3005908X1	2	Nut	

2746 504-2



Item	Part Number	Qty	Description	Comments
				220, 220-4
1	3280189M91	1	Head	
2		1	Housing	Not serviced, order 3280189M91
3	3280191M1	1	Insert	
4	3280192M1	1	Spring	
5	3280193M1	1	Bolt	
6	3280194M1	1	O Ring	
7	3280187M1	1	Gasket	
8	1440712X1	3	Screw	
9	391898X1	2	Bolt Metric	
10	3280185M91	1	Filter	
11	3281969M91	1	Tube	
12	1444745X1	4	Ring	
13	3280188M1	2	Bolt	
14	3280026M1	1	Switch, Indirect	
	3280556M91	1	Oil Pump	
21	3280179M1	1	Body	
22	3280180M1	1	Cover	
	3280557M91	1	Shaft	
24		1	Shaft	Not serviced, order 3280557M91
25	3280181M1	1	Parts Pack	
26	3280184M1	1	Pin	
27	3280183M1	1	Pin	
28	3280182M1	1	Gear	
29	339666X1	2	Screw Metric	
30	353441X1	2	Lock Washer	
31	3280177M1	1	Gasket	
32	3280915M1	1	Tube	220
33	3281378M91	1	Tube	220-4
34	3282201M1	1	Gasket	
35	339123X1	2	Screw Metric	
36	339132X1	3	Screw	
37	353446X1	5	Lock Washer	
43	3282441M91	1	Housing	220 INCL. REF. 44 TO 46 (A)
43	3282200M91	1	Housing	220 (B, C)
44	3281926M1	6	Stud	220
45	3280498M1	1	Adaptor	220
46	391001X1	3	Stud	220
47	3281904M91	1	Housing	220-4
48	3281926M1	6	Stud	220-4
49	3280498M1	1	Adaptor	220-4
50	391001X1	3	Stud	220-4
51	3280104M1	1	Plug	
52	3280105M1	1	Gasket	
53	3280499M1	1	Gauge	220
54	3281377M1	1	Gauge	220-4
55	339084X1	7	Bolt Metric	220
	339084X1	9	Bolt Metric	220-4
56	353446X1	13	Lock Washer	
58	3281144M1	6	Screw	220
	3281144M1	4	Screw	220-4
59	390972X1	5	Washer Metric	(A) From Serial or Engine Number 00354 (B) Up to Serial or Engine Number 00354 (C) Repairs and replaces 3282441M91

2746-505



Buy Now



Our support email:

ebooklibonline@outlook.com