

Page Title	Page Number
TABLE - RIGID CUTTER BAR	2
TABLE PLATES, SHIELDS AND DIVIDERS - RIGID CUTTER BAR	5
TABLE - RIGID CUTTER BAR	6
TABLE PLATES, SHIELDS AND DIVIDERS - RIGID CUTTER BAR	9
TABLE - 30 FOOT RIGID	10
TABLE DIVIDERS AND SHIELDS - 30 FOOT RIGID	13
TABLE - FLOATING CUTTER BAR	14
TABLE - FLOATING CUTTER BAR	17
DIVIDERS AND SHIELDS - FLOATING CUTTER BAR	18
SHIELDS AND BRACKETS - FLOATING CUTTER BAR	21
COUNTER BALANCE, IDLER, SPRING PIVOT ASSEMBLY - FLOATING CUTTER BAR	22
FLOATING DIVIDERS - FLOATING CUTTER BAR	25
FLOATING DIVIDERS - FLOATING CUTTER BAR	26
FLOATING DIVIDER - FLOATING CUTTER BAR	29
AUGER	30
AUGER	34
AUGER - 30' TABLE	38
KNIFE - RIGID CUTTER BAR	42
KNIFE - FLOATING CUTTER BAR	45
CUTTER BAR - FLOATING CUTTER BAR	46
WOBBLE KNIFE DRIVE	49
DRIVE, TABLE AND REEL - BELT DRIVE	50
DRIVE, TABLE AND REEL - BELT DRIVE	54
DRIVE, TABLE AND REEL - CHAIN DRIVE	58
DRIVE, TABLE - 30' TABLE	62
ELECTRIC VARIABLE SPEED REEL DRIVE - 13' THRU 24' TABLES	65
ELECTRIC MOTOR AND WIRING	66
HYDROSTATIC REEL DRIVE HYDRAULICS - 15', 16', 18' AND 20' TABLES	69
HYDROSTATIC REEL DRIVE HYDRAULICS - 16', 18' AND 20' TABLE	70
HYDROSTATIC REEL DRIVE AND HYDRAULICS - 30' TABLE	73
HYDRAULIC PUMP AND RESERVOIR - 30' TABLE	74
HYDRAULIC MOTOR	77
HYDRAULIC MOTOR	78
REEL AND SUPPORTS - 15' THRU 24' TABLES	81
REEL AND SUPPORTS - 30' TABLE	82
REEL LIFT - 15' THRU 24' TABLES	85
REEL LIFT CYLINDERS - 15' THRU 24' TABLES	86
REEL LIFT HYDRAULICS - 30' TABLE	89
REEL LIFT CYLINDERS - 30' TABLE ONLY	90
MF 67 PICK-UP (DRUM) - FRAME, DRUM, GRAIN PAN	93
MF 67 PICK-UP (DRUM) - WINDBAR, WHEELS	94
MF 67 PICK-UP (DRUM) - DRIVE, DRIVE EXTENSION, GUARDS	97
MF 67 PICK-UP (DRAPER) - FRAME, ROLLER, GRAIN PAN, BELTS	98
MF 67 PICK-UP (DRAPER) - WINDBAR WHEELS	101
MF 67 PICK-UP (DRAPER) - DRIVE, DRIVE EXTENSION, GUARDS	102
ELEVATOR TO TABLE DRIVE - PADDLE	105
ELEVATOR SHAFTS AND DRIVES - PADDLE	106
ELEVATOR, TABLE TO CYLINDER - PADDLE	109
ELEVATOR EXTENSION AND DRIVE - PADDLE ELEVATOR	110
ELEVATOR AND EXTENSION - SLAT, WITH 3 ROW CONVEYOR	113
ELEVATOR, TABLE TO CYLINDER - SLAT WITH 2 ROW CONVEYOR	114
ELEVATOR TOP SHAFT AND DRIVE - SLAT ELEVATOR W/3 ROW CONVEYOR	117
ELEVATOR TOP SHAFT AND DRIVE - SLAT ELEVATOR W/2 ROW CONVEYOR	121
ELEVATOR CLUTCH - ELECTRO MAGNETIC HEADER THROW-OUT	122
ELEVATOR DRIVE SHIELDS - COMBINE	125
ELEVATOR DRIVE SHIELDS - COMBINE	126
CYLINDER HOUSING	129
CYLINDER DRIVE - TWO SPEED	130
CYLINDER DRIVE - TWO SPEED	133
VARIABLE SPEED DRIVE CONTROL	137
CYLINDER, RASP BAR - HIGH INERTIA	138
CYLINDER (SPIKE TOOTH)	141
CONCAVE (RASP-BAR)	142
CONCAVE (SPIKE TOOTH)	145
CONCAVE CONTROL	146
STONE TRAP, FEED PLATE	149

TABLE OF CONTENT

FRONT BEATER	150
REAR BEATER	153
WALKER BODY	154
STRAW WALKERS	157
STRAW WALKERS AND RETURNS ELEVATOR DRIVE	161
GRAIN PAN AND SHAKER SHAFT	162
FANNING MILL	165
SHAKER SHOE	166
SCREENS	169
HOOD	170
STRAW SPREADER	173
STRAW SPREADER DRIVE	174
LEFT HAND DRIVE	177
LEFT HAND DRIVE IDLERS	178
GRAIN TANK	181
GRAIN ELEVATOR	182
GRAIN ELEVATOR DRIVE	185
GRAIN TANK UNLOADER BOTTOM	186
GRAIN TANK UNLOADER TOP	189
GRAIN TANK UNLOADER DRIVE	190
RETURNS ELEVATOR	194
RETURNS ELEVATOR CARRIERS	197
MAIN FRAME	201
FRONT AXLE, SHAFTS AND COUPLINGS	202
FRONT AXLE, SHAFTS AND COUPLINGS	205
FRONT WHEELS	206
MAIN DRIVE	209
TRACTION DRIVE - HYDROSTATIC TRANSMISSION	210
VARIABLE SPEED TRACTION DRIVE - 4 SPEED TRANSMISSION	213
TRACTION CLUTCH - 4 SPEED TRANSMISSION	217
GEAR SHIFT - 4 SPEED TRANSMISSION	221
GEAR SHIFT - HYDROSTATIC TRANSMISSION	222
TRANSMISSION - 4 SPEED WITH 2 PINION PLANETARY	225
TRANSMISSION - 4 SPEED, WITH 4 PINION PLANETARY	229
TRANSMISSION - 4 SPEED, WITH 4 PINION PLANETARY	233
TRANSMISSION - HYDROSTATIC	237
TRANSMISSION - HYDROSTATIC	241
HYDROSTATIC CONTROLS - COMBINE	245
HYDROSTATIC CONTROLS - COMBINE	246
HYDROSTATIC PRESSURE RELEASE CONTROLS	249
HYDROSTATIC PUMP DRIVE AND MOTOR - SUNDSTRAND	250
HYDROSTATIC PUMP DRIVE AND MOTOR - SUNDSTRAND	253
HYDROSTATIC PUMP DRIVE AND MOTOR - EATON PUMP AND MOTOR	254
HYDROSTATIC PUMP DRIVE AND MOTOR - EATON	257
HYDROSTATIC PUMP - SUNDSTRAND	258
HYDROSTATIC PUMP - EATON	262
CONTROL VALVE, CHARGING PUMP - HYDROSTATIC PUMP	266
PUMP DRIVE MOTOR - SUNDSTRAND	269
PUMP DRIVE MOTOR - EATON	270
HYDROSTATIC COOLING SYSTEM	273
FINAL DRIVE	274
FINAL DRIVE - RICE TRACK ONLY	277
PARKING BRAKE CONTROL - NORTH AMERICA AND EUROPE	278
TURNING BRAKES - NORTH AMERICA AND EUROPE	281
TURNING BRAKES - NORTH AMERICA AND EUROPE	285
BRAKE CYLINDER, BRAKE ASSEMBLY	289
TRACK, FRAME AND AXLE	290
TRACK, IDLER AND ROLLERS	293
A FRAME AND REAR WHEELS	294
ADJUSTABLE REAR AXLE	297
A FRAME, FIXED REAR AXLE, WHEELS - EUROPE ONLY	298
REAR WHEEL DRIVE, ADJUSTABLE AXLE - AXLE, TIE ROD, WHEELS	301
REAR WHEEL DRIVE HYDRAULICS	302
REAR WHEEL DRIVE HYDRAULICS	305
MOTOR ASSEMBLY - MOTOR HOUSING AND AXLE YOKE	306
MOTOR ASSEMBLY - WHEEL HUB, CYLINDER HOUSING AND BLOCK	309
MOTOR ASSEMBLY - WHEEL MANIFOLD	310
MOTOR ASSEMBLY - PLANET PINION, CARRIER, HOUSING	313

TABLE OF CONTENT

REAR WHEEL DRIVE CONTROL VALVE	314
REAR WHEEL DRIVE WIRING	317
OPERATOR'S PLATFORM AND LADDER	318
CONTROL BOX	321
INSTRUMENTS AND SWITCHES	322
MONITOR SYSTEM	325
MONITOR SYSTEM	326
BATTERY AND WIRING - AT6-354 ENGINE	329
ELECTRICAL WIRING - AV8-540 ENGINE	330
ALTERNATOR	333
STARTER - AT6-354 ENGINE	334
SOLENOID - AT6-354 ENGINE	337
STARTER - AV8-540 ENGINE	338
SOLENOID - AV8-540 ENGINE	341
LIGHTING	342
LIGHTING - ROAD LIGHTS, EUROPE ONLY	345
FLOODLIGHTS	346
LIGHTS	349
LIGHTS - EUROPE ONLY	350
ELECTRIC ETHER STARTING KIT	353
SEAT	354
STEERING PEDESTAL	357
STEERING WHEEL, COLUMN AND CONTROL UNIT	358
ENGINE COVER	361
ENGINE COVER EXTENSION AND CYCLONE INTAKE - AT6-354 ENGINE	362
ENGINE COVER EXTENSION AND CYCLONE INTAKE - AT6-354 ENGINE	365
ENGINE COVER EXTENSION AND CYCLONE INTAKE - AV8-540 ENGINE	366
ENGINE COVER EXTENSION AND CYCLONE INTAKE - AV8-540 ENGINE	369
FRONT SHIELDS - LEFT SIDE	370
REAR SHIELDS - RIGHT SIDE	373
FUEL TANK, LINES, SUPPORTS AND TOOL BOX	374
HYDRAULIC CONTROLS	377
HYDRAULIC CONTROLS	378
MAIN HYDRAULIC CONTROL VALVE - 3 SPOOL	381
HYDROSTATIC REEL DRIVE HYDRAULICS	382
HYDRAULIC PRESSURE AND RETURN LINES	386
HYDRAULIC PUMP - MAIN HYDRAULICS	389
HYDRAULIC TANK	390
REEL LIFT HYDRAULICS	393
HYDRAULIC CONTROL REEL FORE AND AFT - EUROPE ONLY	394
TABLE LIFT HYDRAULICS	397
TABLE LIFT CYLINDERS	398
TANK UNLOADER SWING CONTROLS	401
TANK UNLOADER SWING CONTROLS	402
TANK UNLOADER HYDRAULICS	405
UNLOADER CYLINDER	406
VARIABLE SPEED HYDRAULICS - 4 SPEED	409
VARIABLE SPEED CYLINDER	410
STEERING HYDRAULICS	413
STEERING HYDRAULICS - EUROPE ONLY	414
STEERING CYLINDER	417
TABLE HEIGHT CONTROL - RIGID CUTTER BAR	418
TABLE HEIGHT CONTROL - FLOATING CUTTER BAR	421
TABLE HEIGHT CONTROL - RIGID CUTTER BAR	422
TABLE HEIGHT CONTROL - FLOATING CUTTER BAR	425
CONTROL VALVE - TABLE HEIGHT	426
CONTROL VALVE - TABLE HEIGHT, REEL FORE AND AFT	429
CONTROL VALVE SECTION - EUROPE ONLY	430
HYDRAULIC PUMP DRIVE AND ENGINE SUPPORTS	433
GREASE HARNESS	434
REAR MOTOR HOUSING	437
REAR MOTOR HOUSING	438
BELTS - LEFT SIDE	441
CHAINS	442
CHAINS	445
CHAINS	446
CHAINS - PADDLE ELEVATOR	449
CHAINS - SLAT ELEVATOR	450

TABLE OF CONTENT

00

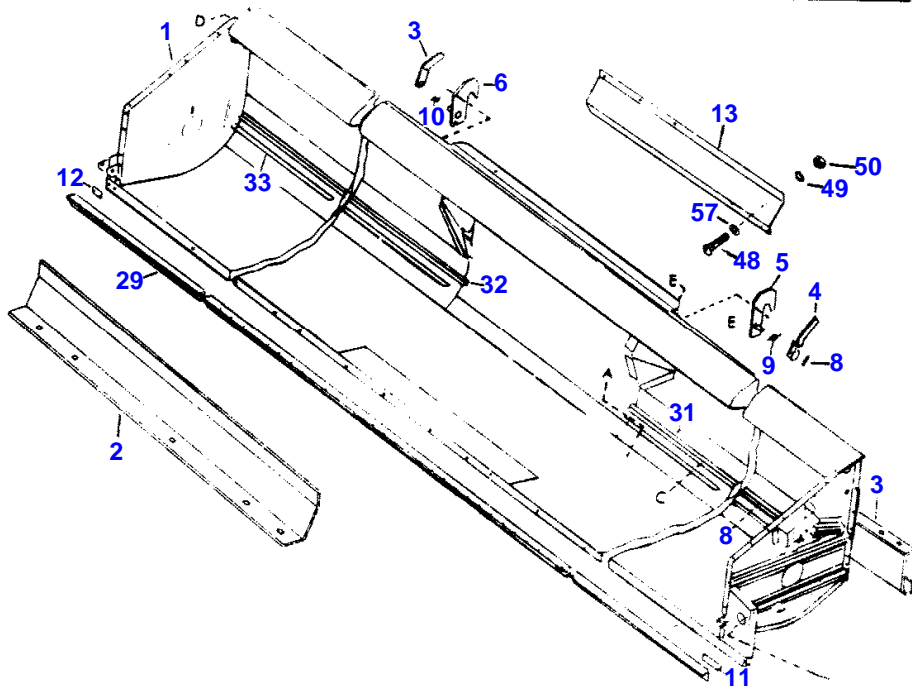
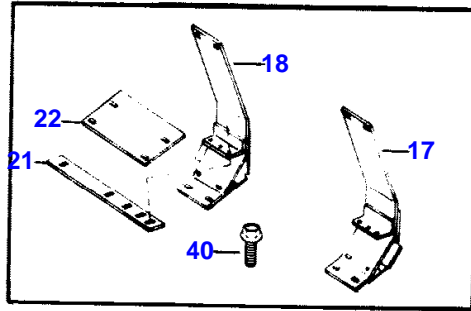
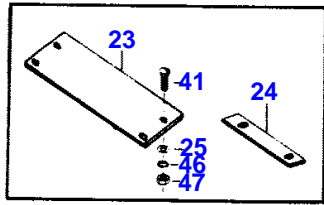
ADAPTING PARTS FOR CORN HEAD	453
CONVEYOR CHAIN	454
EMBLEMS AND LABELS	457
EMBLEMS AND LABELS - FRENCH CANADIAN	458
EMBLEMS AND LABELS	461
CYLINDER BLOCK - AT6-3544 DIESEL	462
CRANKSHAFT, FLYWHEEL, INSERTS - AT6-3544 DIESEL	465
PISTONS, RINGS AND RODS - AT6-3544 DIESEL	466
TIMING GEAR AND CAMSHAFT - AT6-3544 DIESEL	469
CYLINDER HEAD COVER - AT6-3544 DIESEL	470
CYLINDER HEAD - AT6-3544 DIESEL	473
OIL PAN, PUMP AND FILTER - AT6-3544 DIESEL	474
OIL COOLER AND FILTER - AT6-3544 DIESEL	477
GASKET SETS - AT6-3544 DIESEL	478
WATER PUMP AND ATTACHING PARTS - AT6-3544 DIESEL	481
MANIFOLDS - AT6-3544 DIESEL	482
AIR INTAKE AND EXHAUST - AT6-3544 DIESEL ENGINE	485
PRE-CLEANER, PRE-SCREENER	486
THROTTLE CONTROL, FUEL SHUT-OFF - AT6-3544 DIESEL ENGINE ONLY	489
INJECTION SYSTEM - AT6-3544 DIESEL	490
INJECTION PUMP AND INJECTOR - AT6-3544 DIESEL	493
FUEL FILTERS AND LINES - AT6-3544 DIESEL	494
LIFT PUMP AND FUEL FILTER - AT6-3544 DIESEL	497
TURBOCHARGER - AT6-3544 DIESEL	498
RADIATOR FAN DRIVE - AT6-3544 DIESEL	501
CYLINDER BLOCK - AV8-540 DIESEL	502
CRANKSHAFT FLYWHEEL AND BEARINGS - AV8-540 DIESEL	505
CYLINDER HEAD AND VALVES - AV8-540 DIESEL	506
CYLINDER HEAD COVER AND ROCKER SHAFT - AV8-540 DIESEL	509
CAMSHAFT AND TIMING GEARS - AV8-540 DIESEL	510
OIL PAN, PUMP AND COOLER - AV8-540 DIESEL	513
OIL PUMP - AV8-540 DIESEL ENGINE	514
LUBRICATION OIL FILTER - AV8-540 DIESEL	517
ENGINE GASKETS SETS - AV8-540 DIESEL	518
WATER PUMP - AV8-540 DIESEL	521
THROTTLE CONTROL, FUEL SHUT-OFF - AV8-540 DIESEL ENGINE	522
FUEL INJECTION LINES - AV8-540 DIESEL	525
INJECTION PUMP	529
FUEL FILTER AND INJECTION PUMP	530
AUXILIARY DRIVE	533
AIR INTAKE - AV8-540 DIESEL ENGINE	534
EXHAUST SYSTEM	537
INTAKE AND EXHAUST MANIFOLDS - AV8-540 DIESEL ENGINE	538
RADIATOR FAN DRIVE - AV8-540 DIESEL	541
STRAW CHOPPER - DRIVE ASSEMBLY	545
STRAW CHOPPER - DRIVE ASSEMBLY	549
HOUSING, ADAPTER AND ROTOR	553
HOUSING, ADAPTER AND ROTOR - EUROPE ONLY	554
CORN KIT - WITH SLOW DOWN SHEAVE	557
CHOPPER ALARM SYSTEM - NORTH AMERICA	558
CAB - SHEET METAL, WINDOWS	561
CAB - SEALING STRIPS	562
COMPRESSOR EVAPORATOR AND CONDENSOR	565
COMPRESSOR	566
AIR CONDITIONING AND LINES	569
CAB ELECTRICAL WIRING	570
PRESSURIZER	573
HEATER - ORDER WHOLE GOODS NO. 1750011	574
WINDSHIELD WIPER - EUROPE ONLY	577
PICK-UP REEL - GRAIN OR RICE - 6 SPACING - 5 BAT	580
PICK-UP REEL - GRAIN - 6 SPACING - 6 BAT	583
PICK UP REEL - GRAIN OR RICE - 4 SPACING - 6 BAT	584
PICK UP REEL - GRAIN - 6 STAGGERED SPACING - 5 BAT	587
PICK UP REEL - EXPORT ONLY	591
PICK UP REEL - GRAIN AND RICE - 4 SPACING - 6 BAT	595
CLUTCH AND ANTI-WRAP SHIELD - 5 AND 6 BAT REELS	599
DRAPER TABLE	600
TABLE BRACES	603

TABLE OF CONTENT

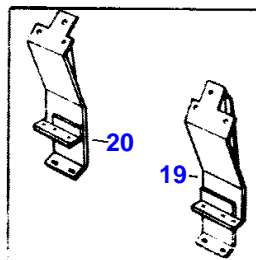
AUGER - DRAPER TABLE	604
WOBBLE KNIFE DRIVE - DRAPER TABLE	607
DRIVES, KNIFE AND AUGER - DRAPER TABLE	608
DRAPER AND DRIVE - DRAPER TABLE	611
REEL ARMS DIVIDERS AND SHIELDS - DRAPER TABLE	612
PICK UP REEL - DRAPER TABLE	615
PICK UP REEL - DRAPER TABLE	616
CLUTCH - PICK-UP REEL - DRAPER TABLE	619
REEL DRIVE HYDRAULICS - DRAPER TABLE	620
REEL LIFT, HYDRAULICS - DRAPER TABLE	623
HYDRAULIC MOTOR - DRAPER TABLE	624
HYDRAULIC CYLINDER - DRAPER TABLE	627
ACCESSORIES - PAINT	628

TABLE

1746 360-2



- | | | | | |
|----|----|----|----|----|
| A | B | C | D | E |
| 41 | 42 | 43 | 44 | 63 |
| 46 | 46 | 46 | 45 | 64 |
| 43 | 43 | 47 | 46 | 65 |
| | | | 47 | |



1st Print

651 429 M93 (Issue 1), 10/87

TABLE - RIGID CUTTER BAR

Item	Part Number	Qty	Description	Comments
				RIGID CUTTER BAR
1	264450M92	1	Table	(A) INCL. REF. 2, 3
2	261580M1	1	Extension	(A)
3	261581M2	1	Support	(A)
1	264454M91	1	Table	(B)
	264456M92	1	Table	(C)
4	262013M92	1	Cam	(A, B, C) Left Hand
5	261516M91	1	Plate	(A, B, C) Left Hand
6	261517M91	1	Plate	(A, B, C) Right Hand
7	262012M92	1	Cam	(A, B, C) Right Hand
8	363307X1	2	Pin	3/16 X 1-1/8" (A, B, C)
9	261641M1	1	Spring	Left Hand (A, B, C)
10	261640M1	1	Spring	Right Hand (A, B, C)
11	369141X1	1	Plate	Left Hand (A, B, C)
12	369142X1	1	Plate	Right Hand (A, B, C)
13	264022M91	1	Cowl	(A, B, C)
16	264446M91	1	Support	(B, C)
17	272131M92	1	Plate	Left Hand 4-3/16" (A, B, C)
18	272137M92	1	Plate	Right Hand 4-3/16" (A, B, C)
19	281982M91	1	Plate	Left Hand 3-3/4" (A, B, C)
20	281981M91	1	Plate	EUROPE ONLY Right Hand 3-3/4" (A, B, C)
21	272141M1	2	Plate	EUROPE ONLY Length 12-3/16" 5 HOLES (A, B, C)
22	272142M1	2	Plate	Length 10" 4 HOLES (A, B, C)
23	272143M1	2	Plate	Length 14-3/16" 4 HOLES (A, B, C)
24	272144M1	2	Plate	Length 8" 2 HOLES (A, B, C)
25	353755X1	16	Washer	11/32 X 11/16 X 1/16" (A, B, C)
29	260707M1	1	Anglepiece	(A)
	260802M2	1	Knife	(B)
	260803M2	1	Anglepiece	(C)
31	261573M1	1	Anglepiece	Left Hand (A)
31	264057M1	1	Angle	Left Hand (B)
31	261534M1	1	Anglepiece	Left Hand (C)
32	261572M1	1	Anglepiece	Right Hand (A)
32	264059M1	1	Angle	Right Hand (B)
32	261535M1	1	Anglepiece	Right Hand

TABLE - RIGID CUTTER BAR

Item	Part Number	Qty	Description	Comments
				(C)
33	261574M1	2	Strap	(A)
33	264058M1	2	Strap	(B)
33	261488M1	2	Plate	(C)
40	365008X1	AR	Screw Unc	5/16 X 5/8" NC (A, B)
41	364352X1	AR	Bolt Unc	5/16 X 3/4" NC (A, B, C)
42	353677X1	AR	Screw Unc	5/16 X 3/4" NC (A, B, C)
43	353678X1	AR	Screw Unc	5/16 X 7/8" NC (A, B, C)
44	364533X1	AR	Bolt	5/16 X 1-1/4" NC (A, B, C)
45	353755X1	AR	Washer	5/16" (A, B, C)
46	353446X1	AR	Lock Washer	5/16" (A, B, C)
47	355565X1	AR	Nut Unc	(A, B, C)
48	360513X1	AR	Screw	(A, B, C)
49	353434X1	AR	Lock Washer	3/8" (A, B, C)
50	355566X1	AR	Nut Unc	(A, B, C)
57	049307X	AR	Washer	7/16" (A, B, C)
58	353725X1	AR	Bolt Unc	(A, B, C)
59	353439X1	AR	Lock Washer	1/2" (A, B, C)
63	363423X1	AR	Bolt	(A, B, C)
64	353433X1	AR	Lock Washer	5/8" (A, B, C)
65	375099X1	AR	Nut Unc	(A, B, C) (A) 13' (B) 15' (C) 16'

TABLE PLATES, SHIELDS AND DIVIDERS

1746 364-2

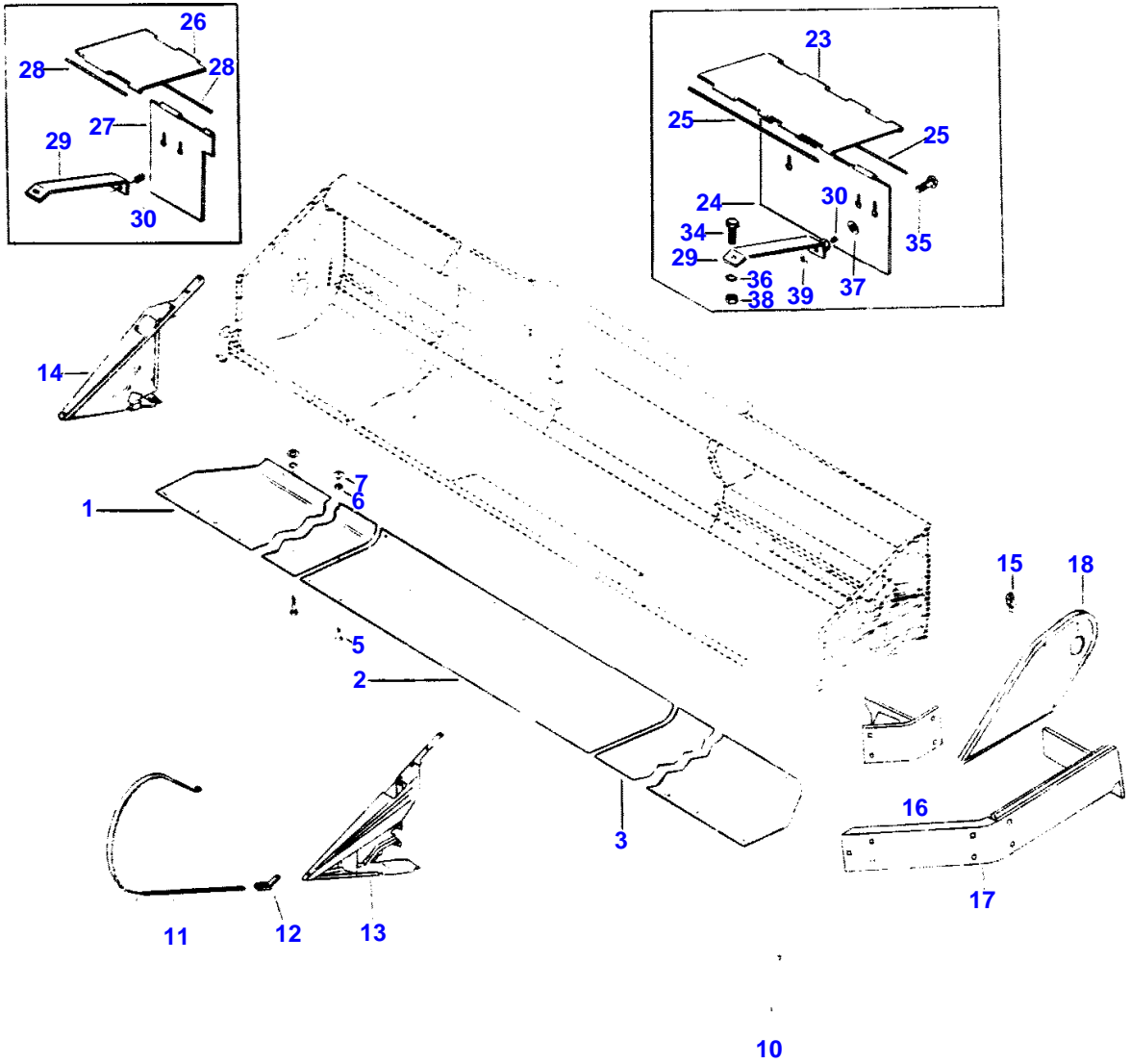
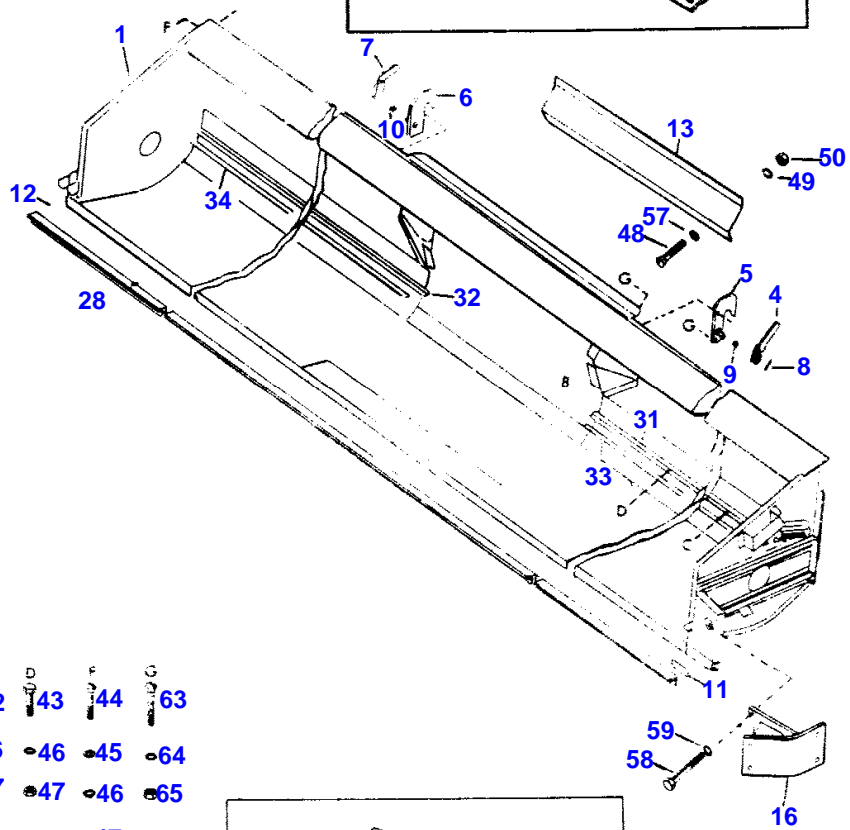
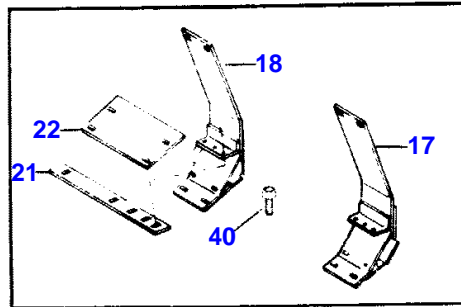
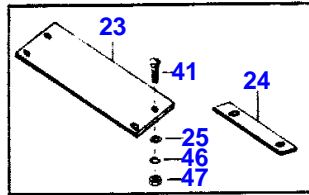


TABLE PLATES, SHIELDS AND DIVIDERS - RIGID CUTTER BAR

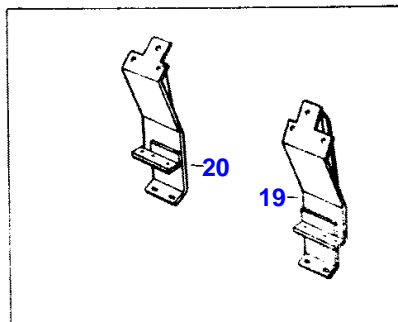
Item	Part Number	Qty	Description	Comments
				RIGID CUTTER BAR
1	264040M91	1	Plate	Right Hand (E)
2	261564M91	1	Plate	Right Hand (F)
2	261562M91	1	Plate	(E, F)
3	261565M91	1	Plate	Left Hand (F)
3	264038M91	1	Plate	Left Hand (E)
5	353691X1	AR	Screw Unc	(E, F)
6	353434X1	AR	Lock Washer	3/8" (E, F)
7	353756X1	AR	Washer	3/8" (E, F)
10	261568M1	7	Shoe	(E, F)
11	239746M1	2	Cowl	(E, F)
12	236125M91	2	Bearer	(E, F)
13	260683M95	1	Divider	Left Hand (E, F)
14	260676M95	1	Divider	Right Hand (E, F)
15	261408M1	1	Bearer	(E, F)
16	264446M91	1	Support	(E, F)
17	261726M91	1	Cowl	(E, F)
18	261409M91	1	Cowl	(E, F)
23	245924M1	1	Shield	Left Hand (A, D, E, F)
24	245925M1	1	Shield	Left Hand (A, D, E, F)
25	360985X1	2	Rod	1/4 X 12-1/16" (A, D, E, F)
26	261623M1	1	Cowl	(B, D, E, F)
27	261626M1	1	Cowl	(B, D, E, F)
28	365695X1	2	Pin	1/4 X 5-3/4" (C, D, E, F)
29	261624M1	3	Bearer	(B, D, E, F)
30	261625M1	3	Spring	(B, D, E, F)
34	353678X1	AR	Screw Unc	(D, E, F)
35	355156X1	AR	Screw Unc	(D, E, F)
36	353446X1	AR	Lock Washer	5/16" (D, E, F)
37	355618X1	AR	Washer	5/16" (D, E, F)
38	355565X1	AR	Nut Unc	(D, E, F)
39	375108X1	AR	Nut Unc	(D, E, F)
				(A)
				USED LATE PRODUCTION TABLE
				(B)
				QUANTITY WAS 2 ON EARLY PRODUCTION TABLES.
				(C)
				QUANTITY WAS 4 ON EARLY PRODUCTION TABLES
				(D)
				13'
				(E)
				15'
				(F)
				18'

TABLE

1746 362-2



- | | | | | |
|----|----|----|----|----|
| 41 | 42 | 43 | 44 | 63 |
| 46 | 46 | 46 | 45 | 64 |
| 47 | 47 | 47 | 46 | 65 |
| | | | 47 | |



1st Print

651 429 M93 Issue 10 10 99

TABLE - RIGID CUTTER BAR

Item	Part Number	Qty	Description	Comments
				RIGID CUTTER BAR
1	264458M92	1	Table	(A)
	264459M93	1	Table	(B)
	264460M92	1	Table	(C)
	264461M92	1	Table	(D)
4	262013M92	1	Cam	Left Hand (A) (B) (C) (D)
5	261516M91	1	Plate	Left Hand (A) (B) (C) (D)
6	261517M91	1	Plate	Right Hand (A) (B) (C) (D)
7	262012M92	1	Cam	Right Hand (A) (B) (C) (D)
8	363307X1	2	Pin	3/16 X 1-1/8" (A) (B) (C) (D)
9	261641M1	1	Spring	Left Hand (A) (B) (C) (D)
10	261640M1	1	Spring	Right Hand (A) (B) (C) (D)
11	369141X1	1	Plate	Left Hand (A) (B) (C) (D)
12	369142X1	1	Plate	Right Hand (A) (B) (C) (D)
13	264022M91	1	Cowl	(A) (B) (C) (D)
16	264446M91	1	Support	(A) (B) (C) (D)
17	272131M92	1	Plate	Left Hand 4-3/16" (A) (B) (C) (D)
18	272137M92	1	Plate	Right Hand 4-3/16" (A) (B) (C) (D)
19	281982M91	1	Plate	Left Hand 3-3/4" (A) (B) (C) (D)
20	281981M91	1	Plate	EUROPE ONLY Right Hand 3-3/4" (A) (B) (C) (D)
21	272141M1	2	Plate	EUROPE ONLY Length 12-3/16" (A) (B) (C) (D)
22	272142M1	2	Plate	Length 10" (A) (B) (C) (D)
23	272143M1	2	Plate	Length 14-3/16" (A) (B) (C) (D)
24	272144M1	2	Plate	Length 8" (A) (B) (C) (D)
25	353755X1	16	Washer	11/32 X 11/16 X 1/16" (A) (B) (C) (D)
28	260861M2	1	Anglepiece	(A)
	260862M3	1	Anglepiece	(B) (C)
	261769M1	1	Angle	(C)
31	261674M1	1	Anglepiece	Left Hand (A)
31	261520M1	1	Anglepiece	Left Hand (B)
31	470138M1	1	Angle	Left Hand (C)
31	261770M1	1	Angle	Left Hand (D)
32	261673M1	1	Anglepiece	Left Hand (A)
32	261518M1	1	Anglepiece	Right Hand (B)
32	470137M1	1	Angle	Right Hand (C)
32	261768M1	1	Angle	Right Hand (D)
33	261675M1	2	Plate	Left Hand

TABLE - RIGID CUTTER BAR

Item	Part Number	Qty	Description	Comments
33	261521M1	2	Strap	(A) Left Hand
33	470136M1	1	Strap	(B) Left Hand
33	470135M1	1	Strap	(C) Right Hand
33	261771M1	2	Strap	(C) Left Hand
40	365008X1	AR	Screw Unc	(D) (A) (B) (C) (D)
41	364352X1	AR	Bolt Unc	(A) (B) (C) (D)
42	353677X1	AR	Screw Unc	(A) (B) (C) (D)
43	353678X1	AR	Screw Unc	(A) (B) (C) (D)
44	364533X1	AR	Bolt	(A) (B) (C) (D)
45	353755X1	AR	Washer	5/16" (A) (B) (C) (D)
46	353446X1	AR	Lock Washer	5/16" (A) (B) (C) (D)
47	355565X1	AR	Nut Unc	(A) (B) (C) (D)
48	360513X1	AR	Screw	(A) (B) (C) (D)
49	353434X1	AR	Lock Washer	3/8" (A) (B) (C) (D)
50	355566X1	AR	Nut Unc	(A) (B) (C) (D)
57	049307X	AR	Washer	7/16" (A) (B) (C) (D)
48	353725X1	AR	Bolt Unc	(A) (B) (C) (D)
59	353439X1	AR	Lock Washer	1/2" (A) (B) (C) (D)
63	363423X1	AR	Bolt	(A) (B) (C) (D)
64	353433X1	AR	Lock Washer	5/8" (A) (B) (C) (D)
65	375099X1	AR	Nut Unc	(A) (B) (C) (D) (A) 18' (B) 20' (C) 20' OFFSET (D) 24'

Buy Now



Our support email:

ebooklibonline@outlook.com