

| Page Title   | Page Number |
|--|-------------|
| TABLE (RIGID CUTTER BAR) (13', 15', 16')                     | 2           |
| TABLE PLATES, SHIELDS AND DIVIDERS (RIGID CUTTER BAR)        | 5           |
| TABLE PLATES, SHIELDS AND DIVIDERS (RIGID CUTTER BAR)        | 9           |
| TABLE (RIGID CUTTER BAR) (18', 20', 20', 24')                | 6           |
| TABLE (FLOATING CUTTER BAR)                                  | 10          |
| DIVIDERS AND SHIELDS (FLOATING CUTTER BAR)                   | 14          |
| SHIELDS, SUPPORTS, BRACKETS (FLOATING CUTTER BAR)            | 17          |
| FLOATING DIVIDERS (LONG) (FLOATING CUTTING BAR)              | 17A         |
| FLOATING DIVIDERS (FLOATING CUTTER BAR) (EARLY PRODUCTION)   | 17D         |
| FLOATING DIVIDERS (LONG) (FLOATING CUTTER BAR)               | 17E         |
| COUNTER BALANCE, ARM, IDLER, SPRING ASSEMBLY                 | 18          |
| AUGER (13', 15', 16')  | 21          |
| AUGER (18', 20', 24')  | 25          |
| KNIFE (RIGID CUTTER BAR) (13', 15', 16', 18', 20', 24')      | 29          |
| KNIFE (FLOATING CUTTER BAR) (15', 16', 18', 20')             | 30          |
| CUTTER BAR (FLOATING) (15', 16', 18', 20')                   | 33          |
| WOBBLE KNIFE DRIVE (13' TABLE)                               | 34          |
| WOBBLE KNIFE DRIVE (15', 16', 18', 20' AND 24' TABLE)        | 37          |
| TABLE DRIVE (13', 15' AND 16' TABLE)                         | 38          |
| TABLE DRIVE (18', 20' AND 24' TABLE)                         | 41          |
| TABLE DRIVE (BELT) (REEL DRIVE)                              | 45          |
| REEL DRIVE (CHAIN)   | 46          |
| REEL DRIVE (ELECTRICAL VARIABLE SPEED)                       | 50          |
| ELECTRIC VARIABLE SPEED REEL DRIVE                           | 53          |
| ELECTRIC MOTOR AND WIRING                                    | 54          |
| HYDROSTATIC REEL DRIVE HYDRAULICS (2 MOTOR DRIVE)            | 57          |
| HYDROSTATIC REEL DRIVE HYDRAULICS                            | 57A         |
| HYDROSTATIC REEL DRIVE HYDRAULICS                            | 337         |
| HYDRAULIC MOTOR  | 58          |
| REEL AND SUPPORTS  | 61          |
| MF 67 PICK-UP (DRUM) (FRAME, DRUM GRAIN PAN) (10' AND 12')   | 65          |
| MF 67 PICK-UP (DRUM) (WINDBAR, WHEELS) (10', 12')            | 66          |
| MF 67 PICK-UP (DRUM) (DRIVE, DRIVE EXTENSION, GUARDS)        | 69          |
| MF 67 PICK-UP (DRAPER) (FRAME, ROLLER, GRAIN PAN, BELTS)     | 70          |
| MF 67 PICK-UP (DRAPER) (WINDBAR, WHEELS) (10', 12')          | 73          |
| MF 67 PICK-UP (DRAPER) (DRIVE, DRIVE EXTENSION, GUARDS)      | 74          |
| ELEVATOR TO TABLE DRIVE                                      | 77          |
| ELEVATOR HOUSING REPAIR                                      | 78          |
| ELEVATOR SHIELDS (PADDLE SLAT GRAIN, PADDLE RICE, SLAT RICE) | 81          |
| ELEVATOR SHAFT, DRIVE AND PADDLES                            | 82          |
| ELEVATOR TABLE TO CYLINDER (DRIVE SHAFT AND CLUTCH)          | 85          |
| ELEVATOR, EXTENSION, TABLE TO CYLINDER (SLAT)                | 86          |
| ELEVATOR TOP SHAFT AND DRIVE (SLAT)                          | 89          |
| ELEVATOR TOP SHAFT AND DRIVE (PADDLE TO SLAT CONVERSION)     | 90          |
| ELEVATOR, TABLE TO CYLINDER (PADDLE TO SLAT CONVERSION)      | 93          |
| ELEVATOR CLUTCHES (ELECTRO MAGNETIC HEADER THROW-OUT)        | 94          |
| ELEVATOR EXTENSION (PADDLE)                                  | 97          |
| CYLINDER HOUSING   | 101         |
| CYLINDER DRIVE (SINGLE) (DOUBLE)                             | 102         |
| CYLINDER DRIVE (SINGLE, DOUBLE)                              | 105         |
| VARIABLE SPEED DRIVE CONTROL                                 | 109         |
| CYLINDER (RASP BAR) (REGULAR)                                | 110         |
| EDIBLE BEAN ATTACHMENT                                       | 114         |
| CYLINDER (SPIKE TOOTH)                                       | 117         |
| CONCAVE (RASP BAR)   | 118         |
| CONCAVE (SPIKE TOOTH)  | 121         |
| CONCAVE CONTROL  | 122         |
| STONE, TRAP, FEED PLATE                                      | 125         |
| FRONT BEATER   | 126         |
| REAR BEATER  | 129         |
| SHAKERSHOE, SIDE HILL PERFORMANCE KIT AND SIEVES             | 130         |
| GRAIN PAN AND SHAKER SHAFT                                   | 133         |
| SCREENS (SHAKER SHOE)  | 134         |
| STRAW WALKERS (GRAIN, RICE)                                  | 137         |
| STRAW WALKERS (MF EUROPE ONLY)                               | 141         |
| STRAW WALKERS AND RETURNS ELEVATOR DRIVE                     | 142         |
| RETURNS ELEVATOR   | 145         |
| RETURNS ELEVATOR CARRIERS                                    | 146         |

TABLE OF CONTENT

|  |      |
|--|------|
| RETURNS ELEVATOR SHIELDS                                     | 149  |
| GRAIN ELEVATOR   | 150  |
| GRAIN ELEVATOR DRIVE   | 153  |
| GRAIN TANK   | 154  |
| GRAIN TANK (EUROPE ONLY)                                     | 157  |
| GRAIN TANK UNLOADER TOP                                      | 161  |
| GRAIN TANK UNLOADER BOTTOM                                   | 162  |
| GRAIN TANK UNLOADER DRIVE                                    | 165  |
| GRAIN TANK UNLOADER DRIVE SHIELDS                            | 169  |
| FANNING MILL   | 170  |
| LEFT HAND DRIVE (FANNING MILL)                               | 173  |
| LEFT HAND DRIVE IDLERS (FANNING MILL)                        | 174  |
| HOOD, CURTAIN AND DEFLECTOR                                  | 177  |
| HOOD, CURTAIN AND DEFLECTOR (EUROPE ONLY)                    | 178  |
| STRAW SPREADER   | 181  |
| STRAW SPREADER DRIVE   | 182  |
| MAIN FRAME   | 185  |
| FRONT AXLE AND WHEELS (4 SPEED TRANSMISSION)                 | 186  |
| FRONT AXLE (HYDROSTATIC TRANSMISSION)                        | 187B |
| FRONT WHEELS   | 187C |
| MAIN DRIVE   | 189  |
| TRACTION CLUTCH (4 SPEED TRANSMISSION)                       | 190  |
| TRACTION DRIVE (HYDROSTATIC TRANSMISSION)                    | 194  |
| VARIABLE SPEED TRACTION DRIVE (4 SPEED TRANSMISSION)         | 197  |
| LEFT FRONT SHIELDS (MUD)                                     | 201  |
| GEAR SHIFT (VARIABLE SPEED TRANSMISSION)                     | 202  |
| GEAR SHIFT (HYDROSTATIC TRANSMISSION)                        | 205  |
| CONSTANT MESH TRANSMISSION (4 SPEED, NORTH AMERICA ONLY)     | 206  |
| CONSTANT MESH TRANSMISSION (HYDROSTATIC, NORTH AMERICA ONLY) | 210  |
| CONSTANT MESH TRANSMISSION (4 SPEED, EUROPE ONLY)            | 214  |
| CONSTANT MESH TRANSMISSION (HYDROSTATIC, EUROPE ONLY)        | 218  |
| HYDRAULIC CONTROLS (4 SPEED AND HYDROSTATIC) (STD., HYD.)    | 222  |
| HYDROSTATIC PRESSURE RELEASE CONTROLS                        | 225  |
| HYDROSTATIC PRESSURE RELEASE CONTROLS (EUROPE ONLY)          | 226  |
| HYDROSTATIC TRANSMISSION CONTROLS                            | 229  |
| CONTROL BOX  | 230  |
| HYDROSTATIC PUMP DRIVE AND MOTOR (SUNDSTRAND PUMP AND MOTOR) | 233  |
| HYDROSTATIC PUMP DRIVE AND MOTOR (EATON PUMP AND MOTOR)      | 234  |
| HYDROSTATIC PUMP   | 237  |
| HYDROSTATIC PUMP (EATON)                                     | 241  |
| CONTROL VALVE, CHARGING PUMP (HYDROSTATIC PUMP) (EATON)      | 245  |
| PUMP DRIVE MOTOR   | 246  |
| PUMP DRIVE MOTOR   | 249  |
| AUXILIARY EQUIPMENT HYDROSTATIC TRANSMISSIONS                | 250  |
| FINAL DRIVE (GRAIN AND RICE - RUBBER) (LEFT, RIGHT)          | 253  |
| FINAL DRIVE (RICE - TRACKS) (LEFT, RIGHT)                    | 257  |
| TURNING BRAKES   | 258  |
| PARKING BRAKE CONTROLS (NORTH AMERICA AND EUROPE)            | 261  |
| BRAKE CYLINDER, BRAKE ASSEMBLY                               | 262  |
| TRACK FRAME AND AXLE (CONVERSION - WHEELS TO TRACK)          | 265  |
| TRACK, IDLER AND ROLLERS (CONVERSION - WHEELS TO TRACK)      | 266  |
| "A" FRAME, FIXED REAR AXLE, WHEELS (RICE)                    | 269  |
| "A" FRAME, FIXED REAR AXLE, WHEELS (GRAIN)                   | 270  |
| ADJUSTABLE REAR AXLE (GRAIN)                                 | 273  |
| REAR WHEEL DRIVE (AXLE, TIE ROD, WHEELS)                     | 274  |
| REAR WHEEL DRIVE (ELECTRICAL WIRING)                         | 277  |
| REAR WHEEL DRIVE HYDRAULICS (CONTROL VALVE, CHARGING PUMP)   | 278  |
| REAR WHEEL DRIVE (HYDRAULICS)                                | 279B |
| REAR WHEEL DRIVE (VALVES, SOLENOID)                          | 281  |
| MOTOR ASSEMBLY (MOTOR HOUSING AND AXLE YOKE)                 | 282  |
| MOTOR ASSEMBLY (WHEEL HUB, CYLINDER HOUSING AND BLOCK)       | 285  |
| MOTOR ASSEMBLY (PLANET PINION, CARRIER, HOUSING)             | 286  |
| MOTOR ASSEMBLY (WHEEL MANIFOLD)                              | 289  |
| WALKER BODY  | 290  |
| WALKER BODY EXTENSION (EUROPE ONLY)                          | 293  |
| OPERATOR'S PLATFORM AND LADDER                               | 294  |
| SEAT (CLOTH AND VINYL)                                       | 297  |
| ENGINE COVER   | 298  |
| ENGINE COVER EXTENSION AND CYCLONE AIR INTAKE                | 301  |
| -----  | ---  |

## TABLE OF CONTENT

|   |     |
|---|-----|
| STEERING PEDESTAL                               | 302 |
| STEERING GEAR                                   | 305 |
| GREASE HARNESS                                  | 306 |
| INSTRUMENTS AND SWITCHES                        | 309 |
| MONITOR SYSTEM                                  | 310 |
| ELECTRICAL WIRING (A6 - 372 DIESEL)             | 314 |
| ELECTRICAL WIRING (AT6 - 354 DIESEL)            | 317 |
| LIGHTING  | 318 |
| FIELD LIGHTING                                  | 321 |
| LIGHTS  | 322 |
| ROAD LIGHTS (EUROPE ONLY)                       | 325 |
| LIGHTS (EUROPE ONLY)                            | 326 |
| CLOCK, WARNING HORN                             | 329 |
| TOOL BOX, FUEL TANK AND LINES (DIESEL)          | 330 |
| THROTTLE CONTROL, FUEL SHUT-OFF                 | 333 |
| REEL LIFT HYDRAULICS                            | 334 |
| HYDROSTATIC REEL DRIVE SHIELDS AND SUPPORT      | 338 |
| HYDRAULIC CONTROL REEL FORE AND AFT             | 341 |
| TABLE LIFT HYDRAULICS (GRAIN, RICE)             | 342 |
| TANK UNLOADER HYDRAULICS                        | 345 |
| VARIABLE SPEED HYDRAULICS (4 SPEED)             | 346 |
| HYDRAULIC PRESSURE AND RETURN LINES             | 349 |
| STEERING HYDRAULICS                             | 350 |
| HYDRAULIC TANK (WITH HYD. AND LESS HYD.)        | 353 |
| HYDRAULIC PUMP DRIVE AND ENGINE SUPPORTS        | 354 |
| HYDRAULIC OIL PUMP                              | 357 |
| MAIN CONTROL VALVE                              | 358 |
| TANK UNLOADER SWING CONTROLS                    | 361 |
| HYDRAULIC CYLINDERS                             | 362 |
| HYDRAULIC CYLINDERS                             | 365 |
| HYDRAULIC CYLINDERS                             | 366 |
| STEERING CONTROL UNIT (GRAIN AND RICE)          | 369 |
| HYDROSTATIC STEERING PUMP AND CYLINDER          | 370 |
| HYDRAULIC OIL FILTER                            | 373 |
| TABLE HEIGHT CONTROL (FLOATING CUTTER BAR)      | 374 |
| TABLE HEIGHT CONTROL (FLOATING CUTTER BAR)      | 378 |
| TABLE HEIGHT CONTROL (RIGID CUTTER BAR)         | 377 |
| TABLE HEIGHT CONTROL (RIGID CUTTER BAR)         | 381 |
| REAR MOTOR HOUSING                              | 382 |
| BELTS   | 385 |
| CHAINS  | 386 |
| CHAINS  | 389 |
| CHAINS  | 390 |
| CHAINS  | 394 |
| CONVEYOR CHAINS                                 | 393 |
| EMBLEMS AND LABELS (NORTH AMERICA)              | 398 |
| EMBLEMS AND LABELS (FRENCH CANDIAN)             | 401 |
| EMBLEMS AND LABELS                              | 402 |
| CYLINDER BLOCK (A6-372.4 DIESEL)                | 405 |
| PISTON RINGS AND RODS (A6-372.4 DIESEL)         | 406 |
| CRANKSHAFT AND FLYWHEEL (A6-372.4 DIESEL)       | 409 |
| CAMSHAFT AND TIMING GEAR (A6-372.4 DIESEL)      | 410 |
| CYLINDER HEAD (A6-372.4 DIESEL)                 | 413 |
| CYLINDER HEAD COVER (A6-372.4 DIESEL)           | 414 |
| OIL PAN, PUMP AND FILTER (A6-372.4 DIESEL)      | 417 |
| GASKET SETS (A6-372.4 DIESEL)                   | 418 |
| WATER PUMP (A6-372.4 DIESEL)                    | 421 |
| MANIFOLDS (A6-372.4 DIESEL)                     | 422 |
| INJECTION SYSTEM (A6-372.4 DIESEL)              | 425 |
| FUEL INJECTION PUMP (A6-372.4 DIESEL)           | 426 |
| FUEL FILTERS AND LINES (A6-372.4 DIESEL)        | 429 |
| CYLINDER BLOCK (AT6-354.4 DIESEL)               | 430 |
| CRANKSHAFT, FLYWHEEL INSERTS (AT6-354.4 DIESEL) | 433 |
| PISTONS, RINGS AND RODS (AT6-354.4 DIESEL)      | 434 |
| CYLINDER HEAD (AT6-354.4 DIESEL)                | 437 |
| CYLINDER HEAD COVER (AT6-354.4 DIESEL)          | 438 |
| TIMING GEAR AND CAMSHAFT (AT6-354.4 DIESEL)     | 441 |
| OIL PAN, FILTER AND PUMP (AT6-354.4 DIESEL)     | 442 |
| OIL COOLER AND FILTER (AT6-3544 DIESEL)         | 445 |
| GASKET SETS (AT6-354.4 DIESEL)                  | 446 |

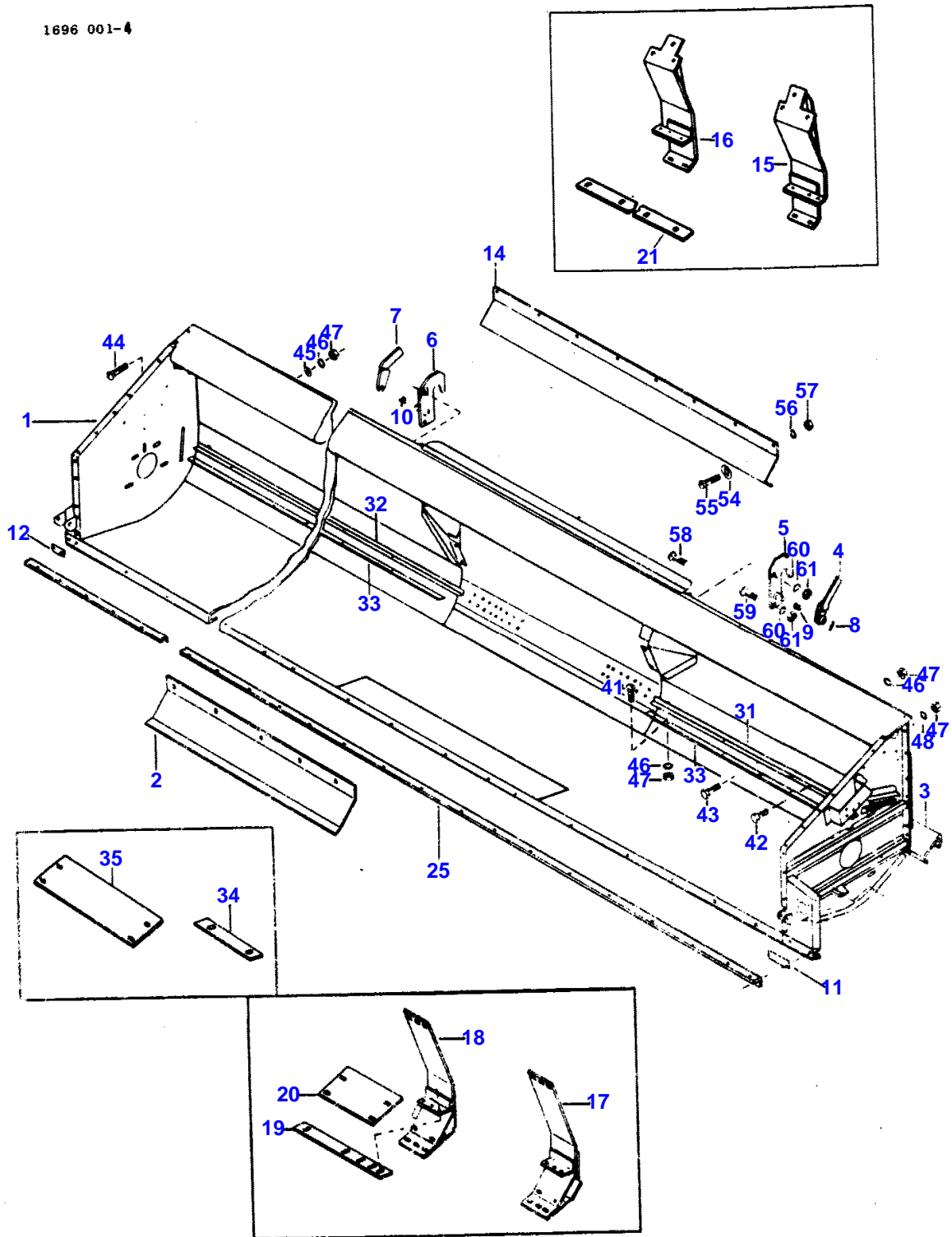
TABLE OF CONTENT

|  |      |
|--|------|
| WATER PUMP AND ATTACHING PARTS (AT6-3544 DIESEL)             | 449  |
| MANIFOLDS (AT6-354.4 DIESEL)                                 | 450  |
| INJECTION SYSTEM (AT6-354.4 DIESEL)                          | 453  |
| INJECTION PUMP AND INJECTOR (AT6-354.4 DIESEL)               | 454  |
| TURBOCHARGER (AT6-354.4 DIESEL)                              | 457  |
| FUEL FILTERS AND LINES (AT6-3544 DIESEL)                     | 458  |
| LIFT PUMP AND FUEL FILTER (AT6-354.4 DIESEL)                 | 461  |
| AIR INTAKE AND EXHAUST (A6-372.4 DIESEL)                     | 462  |
| AIR INTAKE AND EXHAUST (AT6-354.4 DIESEL)                    | 465  |
| RADIATOR, FAN, DRIVE (A6-372.4 DIESEL)                       | 466  |
| SCREENS (RADIATOR, FAN, DRIVE) (UNITED KINGDOM)              | 470  |
| RADIATOR, FAN, DRIVE (AT6-354.4 DIESEL)                      | 473  |
| PRE-CLEANER, PRE-SCREENER (EXTREME DUSTY CONDITIONS)         | 477  |
| ALTERNATOR   | 478  |
| STARTER  | 481  |
| SOLENOID   | 482  |
| ELECTRIC ETHER STARTING KIT                                  | 485  |
| COLD WEATHER START KIT                                       | 486  |
| STRAW CHOPPER (DRIVE ASSEMBLY)                               | 489  |
| STRAW CHOPPER - DRIVE ASSEMBLY (EUROPE)                      | 493  |
| STRAW CHOPPER - DRIVE ASSEMBLY (EUROPE)                      | 494  |
| STRAW CHOPPER - REAR DRIVE SHIELDS                           | 497  |
| CHOPPER ALARM SYSTEM   | 498  |
| STRAW CHOPPER - HOUSING, ADAPTER AND ROTOR                   | 501  |
| HOUSING, ADAPTER AND ROTOR (EUROPE ONLY)                     | 502  |
| STRAW CHOPPER - CORN KIT (W/SLOW DOWN)                       | 505  |
| CAB (SHEET METAL, WINDOWS)                                   | 506  |
| CAB (SEALING AND TRIM)                                       | 509  |
| COMPRESSOR, EVAPORATOR, CONDENSOR                            | 510  |
| COMPRESSOR   | 511B |
| AIR CONDITIONING LINES                                       | 513  |
| CAB ELECTRICAL WIRING  | 514  |
| PRESSURIZER  | 517  |
| HEATER   | 518  |
| WINDSHIELD WIPER (EUROPE ONLY)                               | 521  |
| PICK-UP REEL (GRAIN - 6" SPACING - 5 BAT)                    | 525  |
| PICK-UP REEL (GRAIN - 6" SPACING - 6 BAT)                    | 526  |
| PICK-UP REEL (RICE - 4" SPACING - 6 BAT)                     | 529  |
| PICK-UP REEL (DRAPER TABLE) (RICE - 6" SPACING - 6 BAT)      | 530  |
| CLUTCH (COMBINE PICK-UP REEL)                                | 533  |
| CLUTCH, END SHIELDS - PICK-UP REEL (DRAPER TABLE)            | 534  |
| DRAPER TABLE   | 537  |
| AUGER (DRAPER TABLE)   | 541  |
| WOBBLE KNIFE DRIVE   | 542  |
| DRIVES, KNIFE AND AUGER (DRAPER TABLE)                       | 545  |
| DRAPER AND DRIVE   | 546  |
| REEL ARMS DIVIDERS AND SHIELDS (DRAPER TABLE) (LEFT & RIGHT) | 549  |
| REEL DRIVE HYDRAULICS (DRAPER TABLE)                         | 550  |
| REEL LIFT, HYDRAULICS (DRAPER TABLE)                         | 553  |
| CONTROL VALVE (HEADER HEIGHT)                                | 554  |
| CONTROL VALVE - TABLE HEIGHT, REEL FORE AND AFT              | 557  |
| CONTROL VALVE - CONTROL VALVE SECTION (EUROPE ONLY)          | 558  |
| ACCESSORIES (PAINT)  | 561  |

2

TABLE

1696 001-4



80-49

651 435 M91 (Issue 2) 5/80

| Item | Part Number | Qty | Description                                   |
|------|-------------|-----|---|
| 1    | 245965M91   | 1   | (A) Table Assembly (13')                      |
| 2    | 264450M91   | 1   | (B) Table Assembly (13')                      |
|      | 261580M1    | 1   | Extension, Bottom (Centered Table) (13')      |
| 3    | 261581M1    | 1   | Support (13')                                 |
| 1    | 264454M91   | 1   | Table Assembly (15')                          |
|      | 264456M92   | 1   | Table Assembly (16')                          |
| 4    | 262013M92   | 1   | Cam Assembly, Left                            |
| 5    | 261516M91   | 1   | Hanger Assembly, Left                         |
| 6    | 261517M91   | 1   | Hanger Assembly, Right                        |
| 7    | 262012M92   | 1   | Cam Assembly, Right                           |
| 8    | 363307X1    | 2   | Pin (3/16 x 1-1/8" Groove)                    |
| 9    | 261641M1    | 1   | Spring, Left                                  |
| 10   | 261640M1    | 1   | Spring, Right                                 |
| 11   | 369141X1    | 1   | Strap (2-Hole)                                |
| 12   | 369142X1    | 1   | Strap (2 Hole)                                |
| 14   | 264022M91   | 1   | Shield Assembly                               |
| 15   | 281984M91   | 1   | (C) Plate Assembly, Filler (Left)             |
| 16   | 281983M91   | 1   | (C) Plate Assembly, Filler (Right)            |
| 17   | 272131M92   | 1   | Filler Plate (Left)(4-3/16")                  |
| 18   | 272137M92   | 1   | Filler Plate (Right)(4-3/16")                 |
| 19   | 272141M1    | 2   | Strap (12-3/16" Long - 5 Holes)               |
| 20   | 272142M1    | 2   | Plate (10" Long - 4 Holes)(W/Filler Plates)   |
| 21   | 282020M1    | 2   | (C) Strap, Cut-Off                            |
| 25   | 260707M1    | 1   | Angle, Table Front (13')                      |
|      | 260802M2    | 1   | Angle, Table Front (15')                      |
|      | 260803M2    | 1   | Angle, Table Front (16')                      |
| 31   | 261573M1    | 1   | Angle, Left (49-7/16") (13')                  |
|      | 264057M1    | 1   | Angle, Left (61-7/16") (15')                  |
|      | 261534M1    | 1   | Angle, Left (67-7/16") (16')                  |
| 32   | 261572M1    | 1   | Angle, Right (49-7/16") (13')                 |
|      | 264059M1    | 1   | Angle, Right (61-7/16") (15')                 |
|      | 261535M1    | 1   | Angle, Right (67-7/16") (16')                 |
| 33   | 261574M1    | 2   | Strap, Support (41-7/16" Long)(4 Holes) (13') |
|      | 264058M1    | 2   | Strap(53-7/16" Long) (15')                    |
|      | 261488M1    | 2   | Strap, Support (59-7/16") (16')               |
| 34   | 272144M1    | 2   | Strip (8" Long - 2 Holes)(W/O Filler Plates)  |
| 35   | 272143M1    | 2   | Plate (14-3/16" Long - 4 Holes)               |
| 41   | 364352X1    | AR  | Bolt (5/16 x 3/4" NC, Carr.)                  |
| 42   | 353677X1    | AR  | Bolt (5/16 x 3/4" NC, Hex.)                   |
| 43   | 353678X1    | AR  | Bolt (5/16 x 7/8" NC, Hex.)                   |
| 44   | 364533X1    | AR  | Bolt (5/16 x 1-1/4" NC, Carr.)                |
| 45   | 353755X1    | AR  | Washer (11/32 x 11/16 x 5/64" Flat)           |
| 46   | 353446X1    | AR  | Washer (5/16" Lock)                           |
| 47   | 355565X1    | AR  | Nut (5/16" NC, Hex.)                          |
| 54   | 49307X      | AR  | Washer (7/16" Sq. Hole Flat)                  |
| 55   | 360513X1    | AR  | Bolt (3/8 x 3/4" NC. Carr.)                   |
| 56   | 353434X1    | AR  | Washer (3/8" Lock)                            |
| 57   | 355566X1    | AR  | Nut (3/8" NC, Hex.)                           |
| 58   | 261006M1    | AR  | Bolt (3/8 x 2" NC, Special)                   |
| 59   | 363423X1    | AR  | Bolt (5/8 x 2" NC, Carr.)                     |
| 60   | 353433X1    | AR  | Washer (5/8" Lock)                            |
| 61   | 375099X1    | AR  | Nut (5/8" NC, Hex.)                           |

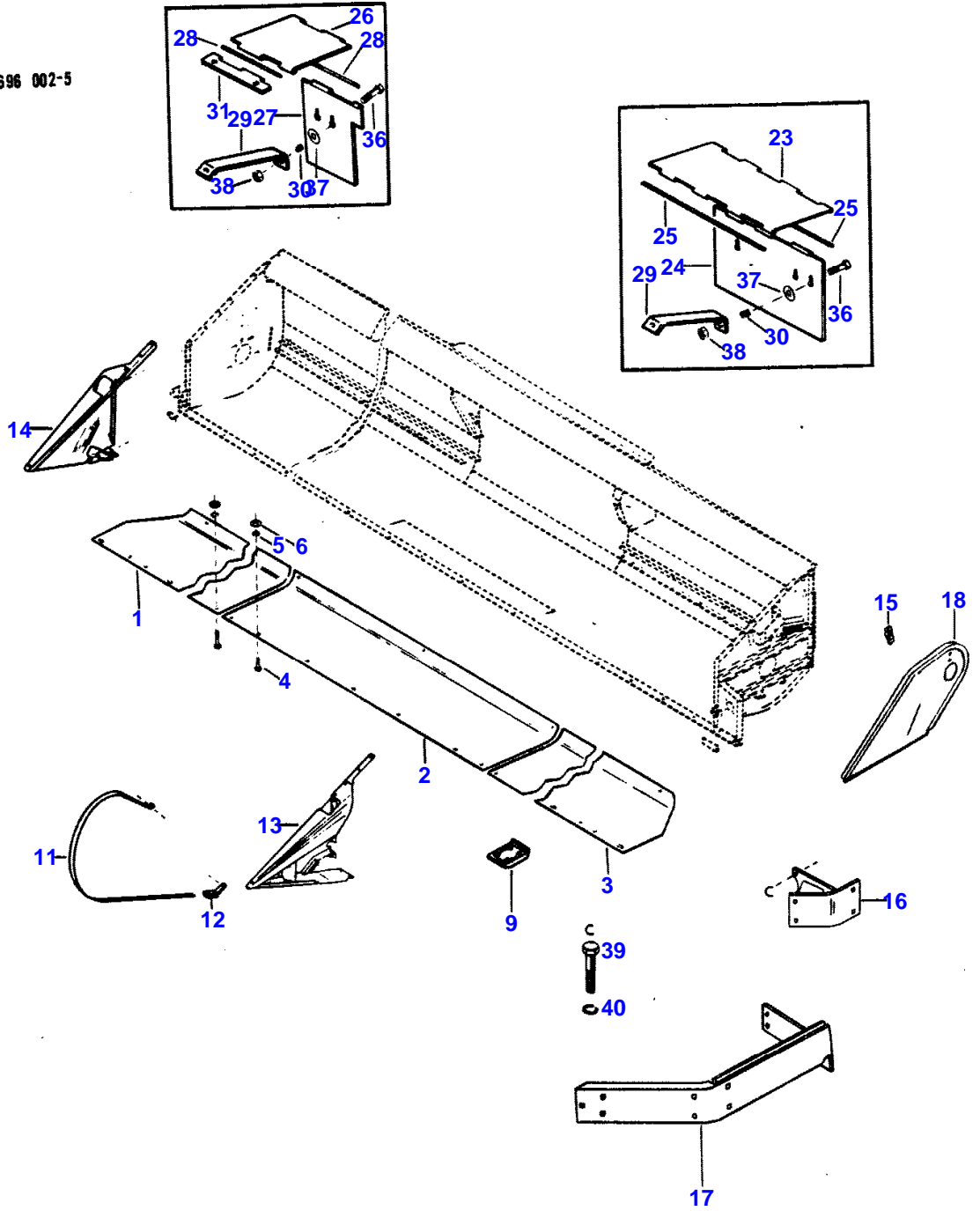
\*\*\*\*\*

(A) - Used Table Serial Number  
1859063877 And Up  
(B) - Used Prior To Table Serial Number  
1859063877.  
(C) - Europe Only.

TABLE PLATES, SHIELDS AND DIVIDERS

5

1696 002-5



80-49

651 435 M91 (Issue 2) 5/80

| Item  | Part Number | Qty | Description<br>(13', 15', 16')             |
|-------|-------------|-----|--|
| ***** |             |     |  |
| 1     | 261596M91   | 1   | Plate Assembly, Table Bottom (Right) (13') |
|       | 264040M91   | 1   | Plate Assembly, Right (15')                |
|       | 261564M91   | 1   | Plate Assembly, Right (16')                |
| 2     | 261562M91   | 1   | Plate Assembly, Center (15', 16')          |
| 3     | 261597M91   | 1   | Plate Assembly, Table Bottom (Left) (13')  |
|       | 264038M91   | 1   | Plate Assembly, Left (15')                 |
|       | 261565M91   | 1   | Plate Assembly, Left (16')                 |
| 4     | 353691X1    | 26  | Bolt (3/8 x 1" NC, Hex.) (13')             |
|       | 353691X1    | 30  | Bolt (3/8 x 1" NC, Hex.) (15')             |
|       | 353691X1    | 32  | Bolt (3/8 x 1" NC, Hex.) (16')             |
| 5     | 353434X1    | 26  | Washer (3/8" Lock) (13')                   |
|       | 353434X1    | 30  | Washer (3/8" Lock) (15')                   |
|       | 353434X1    | 32  | Washer (3/8" Lock) (16')                   |
| 6     | 353756X1    | 26  | Washer (13/32 x 13/16 x 1/16" Flat) (13')  |
|       | 353756X1    | 30  | Washer (13/32 x 13/16 x 1/16" Flat) (15')  |
|       | 353756X1    | 32  | Washer (13/32 x 13/16 x 1/16" Flat) (16')  |
| 9     | 261568M1    | 5   | Shoe (13')                                 |
|       | 261568M1    | 6   | Shoe (15')                                 |
|       | 261568M1    | 7   | Shoe (16')                                 |
| 11    | 239746M1    | 2   | Guard                                      |
| 12    | 236125M91   | 2   | Bracket Assembly                           |
| 13    | 260683M95   | 1   | Divider Assembly, Left                     |
| 14    | 260676M95   | 1   | Divider Assembly, Right                    |
| 15    | 261408M1    | 1   | Bracket, Lift Arm                          |
| 16    | 264446M91   | 1   | Bracket Assembly                           |
| 17    | 261726M91   | 1   | Shield Assembly                            |
| 18    | 261409M91   | 1   | Shield Assembly                            |
| 23    | 245924M1    | 1   | (A) Shield, Left                           |
| 24    | 245925M1    | 1   | (A) Shield, Left                           |
| 25    | 360985X1    | 2   | (A) Rod (1/4 x 12-1/16")                   |
| 26    | 261623M1    | 1   | (B) Shield, Right                          |
| 27    | 261626M1    | 1   | (B) Shield, Right                          |
| 28    | 365695X1    | 2   | (C) Pin (1/4 x 5-3/4" Headless)            |
| 29    | 261624M1    | 3   | (B) Support                                |
| 30    | 261625M1    | 3   | (B) Spring                                 |
| 31    | 261622M1    | 1   | (B) Hinge, Shield                          |
| 36    | 355156X1    | AR  | Bolt (5/16 x 1-1/2" NC, Sltd. Truss Hd.)   |
| 37    | 368371X1    | AR  | Washer (11/32 x 1-1/4 x 1/8")              |
| 38    | 375108X1    | AR  | Nut (5/16" NC, Half Hex.)                  |
| 39    | 353725X1    | AR  | Bolt (1/2 x 1-3/4" NC, Hex.) (15', 16')    |
| 40    | 353439X1    | AR  | Washer (1/2" Lock) (15', 16')              |

\*\*\*\*\*

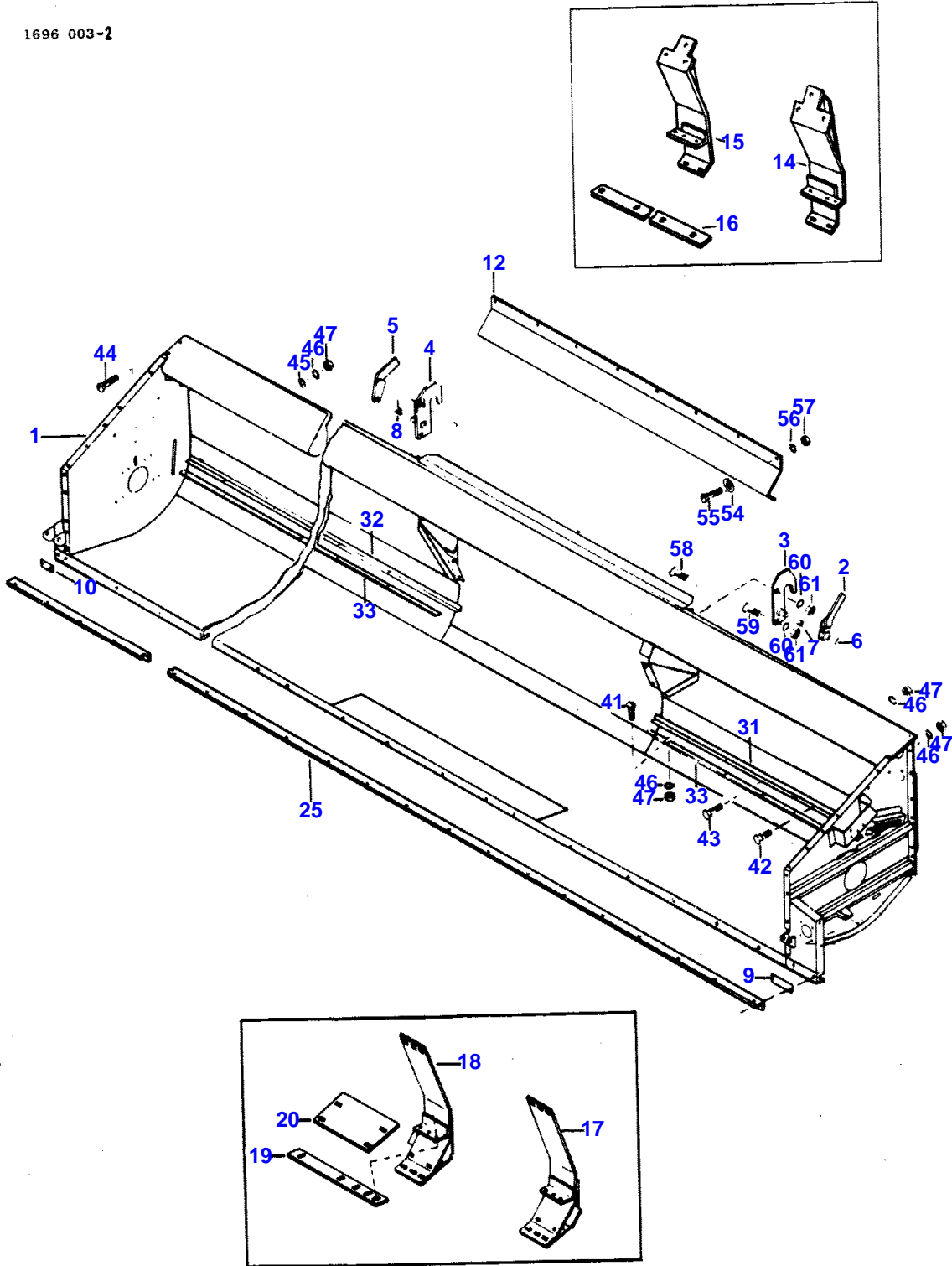
(A) - Used Late Production Tables.  
 (B) - Quantity Was 2 On Early Production Tables.  
 (C) - Quantity Was 4 On Early Production Tables.



6

TABLE

1696 003-2



80-49

651 435 M91 (Issue 2) 5/80

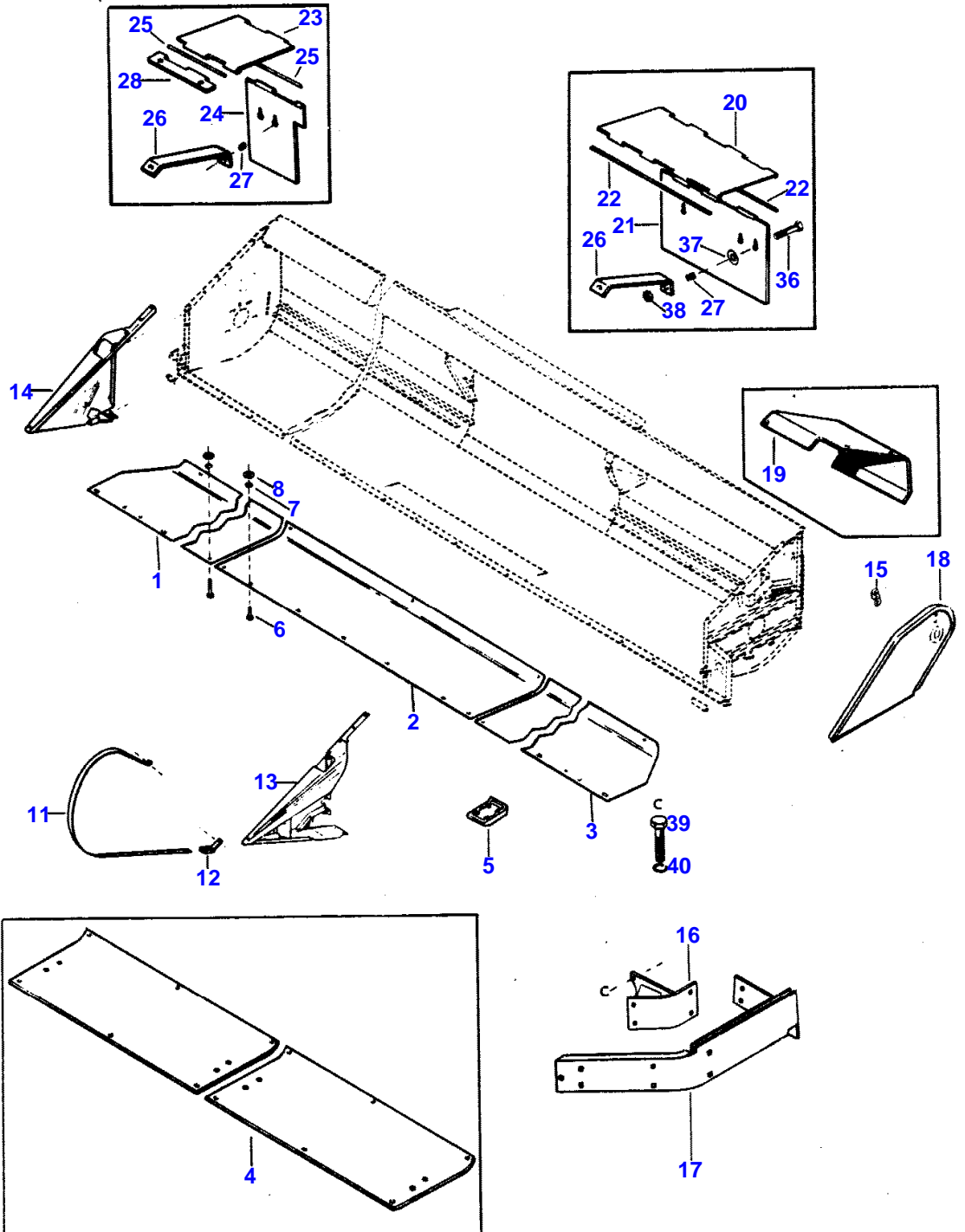
| Item | Part Number | Qty | Description                                 |
|------|-------------|-----|---|
| 1    | 264458M92   | 1   | Table Assembly (18')                        |
|      | 264459M92   | 1   | Table Assembly (20')                        |
|      | 264460M92   | 1   | Table Assembly (Offset) 20'                 |
|      | 264461M92   | 1   | Table Assembly                              |
| 2    | 262013M92   | 1   | Cam Assembly, Left                          |
| 3    | 261516M91   | 1   | Hanger Assembly, Left                       |
| 4    | 261517M91   | 1   | Hanger Assembly, Right                      |
| 5    | 262012M92   | 1   | Cam Assembly, Right                         |
| 6    | 363307X1    | 2   | Pin (3/16 x 1-1/8" Groove)                  |
| 7    | 261641M1    | 1   | Spring, Left                                |
| 8    | 261640M1    | 1   | Spring, Right                               |
| 9    | 369141X1    | 1   | Strap (2-Hole)                              |
| 10   | 369142X1    | 1   | Strap (2 Hole)                              |
| 12   | 264022M91   | 1   | Shield Assembly                             |
| 14   | 281984M91   | 1   | (A) Plate Assembly, Filler (Left)           |
| 15   | 281983M91   | 1   | (A) Plate Assembly, Filler (Right)          |
| 16   | 282020M1    | 2   | (A) Strap, Cut-Off                          |
| 17   | 272131M92   | 1   | Filler Plate (Left)(4-3/16")                |
| 18   | 272137M92   | 1   | Filler Plate (Right)(4-3/16")               |
| 19   | 272141M1    | 2   | Strap (12-3/16" Long - 5 Holes)             |
| 20   | 272142M1    | 2   | Plate (10" Long - 4 Holes)(W/Filler Plates) |
| 25   | 260861M2    | 1   | Angle, Table Front (18')                    |
|      | 260862M3    | 1   | Angle, Table Front (20')                    |
|      | 261769M1    | 1   | Bar, Knife (24')                            |
| 31   | 261674M1    | 1   | Angle, Left (79-7/16") (18')                |
|      | 261520M1    | 1   | Angle, Left (91-7/16") (20')                |
|      | 470138M1    | 1   | Angle (Offset)(72-7/16") (20')              |
|      | 261770M1    | 1   | Angle, Left (24')                           |
| 32   | 261673M1    | 1   | Angle, Right (79-7/16") (18')               |
|      | 261518M1    | 1   | Angle, Right (91-7/16") (20')               |
|      | 470137M1    | 1   | Angle, (Offset) (20')                       |
|      | 261768M1    | 1   | Angle, Right (24')                          |
| 33   | 261675M1    | 2   | Strap, Support (71-7/16") (18')             |
|      | 261521M1    | 2   | Strap (83-7/16") (20')                      |
|      | 470135M1    | 1   | Strap, Right (Offset) (20')                 |
|      | 470136M1    | 1   | Strap (Offset)(64-7/16") (20')              |
|      | 261771M1    | 2   | Strap, Table (24')                          |
| 41   | 364352X1    | AR  | Bolt (5/16 x 3/4" NC, Carr.)                |
| 42   | 353677X1    | AR  | Bolt (5/16 x 3/4" NC, Hex.)                 |
| 43   | 353678X1    | AR  | Bolt (5/16 x 7/8" NC, Hex.)                 |
| 44   | 364533X1    | AR  | Bolt (5/16 x 1-1/4" NC, Carr.)              |
| 45   | 353755X1    | AR  | Washer (11/32 x 11/16 x 5/64" Flat)         |
| 46   | 353446X1    | AR  | Washer (5/16" Lock)                         |
| 47   | 355565X1    | AR  | Nut (5/16" NC, Hex.)                        |
| 54   | 49307X      | AR  | Washer (7/16" Sq. Hole Flat)                |
| 55   | 360513X1    | AR  | Bolt (3/8 x 3/4" NC. Carr.)                 |
| 56   | 353434X1    | AR  | Washer (3/8" Lock)                          |
| 57   | 355566X1    | AR  | Nut (3/8" NC, Hex.)                         |
| 58   | 261006M1    | AR  | Bolt (3/8 x 2" NC, Special)                 |
| 59   | 363423X1    | AR  | Bolt (5/8 x 2" NC, Carr.)                   |
| 60   | 353433X1    | AR  | Washer (5/8" Lock)                          |
| 61   | 375099X1    | AR  | Nut (5/8" NC, Hex.)                         |

\*\*\*\*\*

(A) - Europe Only.

TABLE

1696 004-4



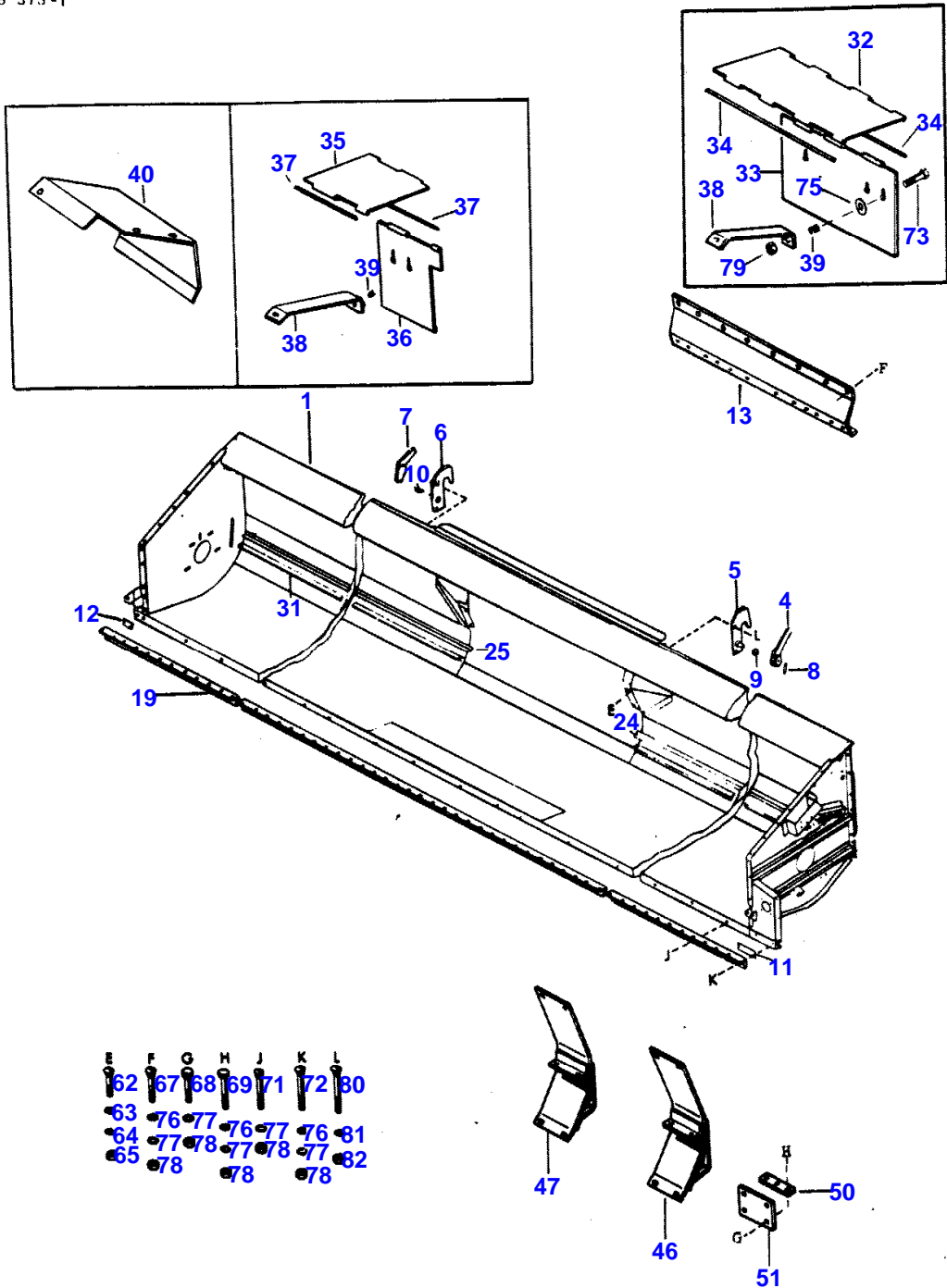
| Item | Part Number | Qty | Description<br>(18', 20', 24')                   |
|------|-------------|-----|--|
|      |             |     | *****  |
| 1    | 261668M91   | 1   | Plate Assembly, Right (18', 24')                 |
|      | 261600M91   | 1   | Plate Assembly, Table Bottom, (Right) (20')      |
|      | 470150M91   | 1   | Plate Assembly, Right (20' Offset)               |
| 2    | 261562M91   | 1   | Plate Assembly, Center                           |
| 3    | 261669M91   | 1   | Plate Assembly, Left (18', 24')                  |
|      | 261601M91   | 1   | Plate Assembly, Table Bottom, Left (20')         |
|      | 470152M91   | 1   | Plate Assembly, Left (Offset) (20')              |
| 4    | 261744M91   | 1   | Plate Assembly, Right and Left (20', 24')        |
| 5    | 261568M1    | 7   | Shoe (18', 20')                                  |
|      | 261568M1    | 8   | Shoe (20' Offset)                                |
|      | 261568M1    | 9   | Shoe (24')                                       |
| 6    | 353691X1    | 28  | Bolt (3/8 x 1" NC, Hex.) (18', 20')              |
|      | 353691X1    | 32  | Bolt (3/8 x 1" NC, Hex.) (20' Offset)            |
|      | 353691X1    | 36  | Bolt (3/8 x 1" NC, Hex.) (24')                   |
| 7    | 353434X1    | 28  | Washer (3/8" Lock) (18', 20')                    |
|      | 353434X1    | 32  | Washer (3/8" Lock) (20' Offset)                  |
|      | 353434X1    | 36  | Washer (3/8" Lock) (24')                         |
| 8    | 353756X1    | 28  | Washer (13/32 x 13/16 x 1/16" Flat) (18', 20')   |
|      | 353756X1    | 32  | Washer (13/32 x 13/16 x 1/16" Flat) (20' Offset) |
|      | 353756X1    | 36  | Washer (13/32 x 13/16 x 1/16" Flat) (24')        |
| 11   | 239746M1    | 2   | Guard  |
| 12   | 236125M91   | 2   | Bracket Assembly                                 |
| 13   | 260683M95   | 1   | Divider Assembly, Left                           |
| 14   | 260676M95   | 1   | Divider Assembly, Right                          |
| 15   | 261408M1    | 1   | Bracket, Lift Arm                                |
| 16   | 264446M91   | 1   | Bracket Assembly                                 |
| 17   | 261726M91   | 1   | Shield Assembly                                  |
| 18   | 261409M91   | 1   | Shield Assembly                                  |
| 19   | 261627M1    | 1   | Shield   |
| 20   | 245924M1    | 1   | (A) Shield, Left                                 |
| 21   | 245925M1    | 1   | (A) Shield, Left                                 |
| 22   | 360985X1    | 2   | (A) Rod (1/4 x 12-1/16")                         |
| 23   | 261623M1    | 1   | (B) Shield, Right                                |
| 24   | 261626M1    | 1   | (B) Shield, Right                                |
| 25   | 365695X1    | 2   | (C) Pin (1/4 x 5-3/4" Headless)                  |
| 26   | 261624M1    | 3   | (B) Support                                      |
| 27   | 261625M1    | 3   | (B) Spring                                       |
| 28   | 261622M1    | 1   | (B) Hinge, Shield                                |
| 36   | 355156X1    | AR  | Bolt (5/16 x 1-1/2" NC, Sltd. Truss Hd.)         |
| 37   | 368371X1    | AR  | Washer (11/32 x 1-1/4 x 1/8")                    |
| 38   | 375108X1    | AR  | Nut (5/16" NC, Half Hex.)                        |
| 39   | 353725X1    | AR  | Bolt (1/2 x 1-3/4" NC, Hex.)                     |
| 40   | 353439X1    | AR  | Washer (1/2" Lock)                               |

\*\*\*\*\*  
 (A) - Used Late Production Tables  
 (B) - Quantity Was 2 On Early Production Tables.  
 (C) - Quantity Was 4 On Early Production Tables.

10

TABLE

1696 373-1



80-49

651 435 M91 (Issue 2) 5/80

| Item | Part Number | Qty | Description                                  |
|------|-------------|-----|--|
|      |             |     | (15', 16', 18', 20')                         |
|      |             |     | *****  |
| 1    | 245504M92   | 1   | Table Assembly (Centered) (15')              |
|      | 245505M91   | 1   | Table Assembly (Centered) (16')              |
|      | 245510M91   | 1   | Table Assembly (Centered)(1859 Series) (18') |
|      | 245511M92   | 1   | Table Assembly (Centered) (20')              |
|      | 245516M91   | 1   | Table Assembly (Offset) (20')                |
| 4    | 262013M92   | 1   | Cam Assembly, Left                           |
| 5    | 261516M91   | 1   | Hanger Assembly, Left                        |
| 6    | 261517M91   | 1   | Hanger Assembly, Right                       |
| 7    | 262012M92   | 1   | Cam Assembly, Right                          |
| 8    | 363307X1    | 2   | Pin (3/16 x 1-1/8" Groove)                   |
| 9    | 261641M1    | 1   | Spring, Left                                 |
| 10   | 261640M1    | 1   | Spring, Right                                |
| 11   | 369141X1    | 1   | Strap (2-Hole)                               |
| 12   | 369142X1    | 1   | Strap (2 Hole)                               |
| 13   | 264022M91   | 1   | Shield Assembly                              |
| 19   | 245508M1    | 1   | Angle, Knife (180-1/2") (15')                |
|      | 245509M1    | 1   | Angle, Knife (192-1/2") (16')                |
|      | 245514M1    | 1   | Angle, Knife (216-1/2") (18')                |
|      | 245515M1    | 1   | Angle, Knife (240-1/2") (20' Offset, 20')    |
| 24   | 264057M1    | 1   | Angle, Left (61-7/16") (15')                 |
|      | 261534M1    | 1   | Angle, Left (67-7/16") (16')                 |
|      | 261674M1    | 1   | Angle, Left (79-7/16") (18')                 |
|      | 261520M1    | 1   | Angle, Left (91-7/16") (20')                 |
|      | 470138M1    | 1   | Angle (Offset)(72-7/16") (20')               |
| 25   | 264059M1    | 1   | Angle, Right (61-7/16") (15')                |
|      | 261535M1    | 1   | Angle, Right (67-7/16") (16')                |
|      | 261673M1    | 1   | Angle, Right (79-7/16") (18')                |
|      | 261518M1    | 1   | Angle, Right (91-7/16") (20')                |
|      | 470137M1    | 1   | Angle, (Offset) (20')                        |
|      |             |     | *****  |
|      |             |     | USED 1859 SERIES TABLE - 54" OPENING         |
|      |             |     | *****  |
| 31   | 264058M1    | 2   | Strap (15')                                  |
|      | 261488M1    | 2   | Strap, Support (59-7/16") (16')              |
|      | 261675M1    | 2   | Strap, Support (71-7/16") (18')              |
|      | 470135M1    | 1   | Strap, Right (Offset) (20')                  |
|      | 470136M1    | 1   | Strap (Offset)(64-7/16") (20')               |
|      | 261521M1    | 2   | Strap (83-7/16") (20' Offset, 20')           |
| 32   | 245924M1    | 1   | (A) Shield, Left                             |
|      | 245925M1    | 1   | (A) Shield, Left                             |
| 34   | 360985X1    | 2   | (A) Rod (1/4 x 12-1/16")                     |
| 35   | 261623M1    | 1   | (B) Shield, Right                            |
| 36   | 261626M1    | 1   | (B) Shield, Right                            |
| 37   | 365695X1    | 2   | (C) Pin (1/4 x 5-3/4" Headless)              |
| 38   | 261624M1    | 3   | (B) Support                                  |
| 39   | 261625M1    | 3   | (B) Spring                                   |
| 40   | 261627M1    | 2   | Shield (18', 20' Offset, 20')                |
| 46   | 249921M91   | 1   | Filler Assembly, Left (6-3/4" Wide)          |
|      | 249520M91   | 1   | Filler Assembly, Left (2" Wide)              |
| 47   | 249917M91   | 1   | Filler Assembly, Right (6-3/4" Wide)         |
|      | 249519M91   | 1   | Filler Assembly, Right (2" Wide)             |
| 50   | 249922M1    | 2   | Strap  |
| 51   | 249923M1    | 2   | Plate  |
|      | 249525M1    | 2   | Plate (6-1/8" Between Holes)                 |
| 61   | 365695X1    | AR  | Pin (1/4 x 5-3/4" Headless)                  |
| 62   | 360487X1    | AR  | Bolt (1/4 x 5/8" NC, Carr.)                  |
| 63   | 353754X1    | AR  | Washer (9/32 x 5/8 x 1/16" Flat)             |
| 64   | 353441X1    | AR  | Washer (1/4" Lock)                           |
| 65   | 355564X1    | AR  | Nut (1/4" NC, Hex.)                          |
| 67   | 360500X1    | AR  | Bolt (5/16 x 5/8" NC, Carr.)                 |
| 68   | 353676X1    | AR  | Bolt (5/16 x 5/8" NC, Hex.)                  |
| 69   | 364352X1    | AR  | Bolt (5/16 x 3/4" NC, Carr.)                 |
| 71   | 364954X1    | AR  | Bolt (5/16 x 7/8" NC, Carr.)                 |
| 72   | 364533X1    | AR  | Bolt (5/16 x 1-1/4" NC, Carr.)               |
| 73   | 355156X1    | AR  | Bolt (5/16 x 1-1/2" NC, Sltd. Truss)         |
| 75   | 355618X1    | AR  | Washer (5/16" Flat)                          |
| 76   | 33755X1     | AR  | Washer (5/16" Flat)                          |
| 77   | 353446X1    | AR  | Washer (5/16" Lock)                          |
| 78   | 355565X1    | AR  | Nut (5/16" NC, Hex.)                         |

**Buy Now**



Our support email:

[ebooklibonline@outlook.com](mailto:ebooklibonline@outlook.com)