

Page Title	Page Number
TABLE - RIGID CUTTER BAR	2
TABLE PLATES, SHIELDS AND DIVIDERS - RIGID CUTTER BAR	5
TABLE - RIGID CUTTER BAR	6
TABLE PLATES, SHIELDS AND DIVIDERS - RIGID CUTTER BAR	9
TABLE - FLOATING CUTTER BAR	10
DIVIDERS AND SHIELDS - FLOATING CUTTER BAR	14
SHIELDS, SUPPORTS, BRACKETS - FLOATING CUTTER BAR	17
FLOATING DIVIDERS (LONG) - FLOATING CUTTER BAR	17A
FLOATING DIVIDERS - FLOATING CUTTER BAR	17D
FLOATING DIVIDERS (LONG) - FLOATING CUTTER BAR	17E
COUNTER BALANCE, ARM, IDLER, SPRING ASSEMBLY - FLOATING CUTTER BAR	18
AUGER	21
AUGER	25
KNIFE - RIGID CUTTER BAR	29
KNIFE - FLOATING CUTTER BAR	30
CUTTER BAR - FLOATING	33
WOBBLE KNIFE DRIVE - 13' TABLE	34
WOBBLE KNIFE DRIVE - 15', 16', 18', 20' AND 24' TABLE	37
TABLE DRIVE - 13', 15' AND 16' TABLE	38
TABLE DRIVE - 18', 20' AND 24' TABLE	41
REEL DRIVE-HYDRAULIC ADJUSTING - BELT	45
REEL DRIVE-HYDRAULIC ADJUSTING - CHAIN	46
REEL DRIVE-HYDRAULIC ADJUSTING - ELECTRIC VARIABLE SPEED	50
ELECTRIC VARIABLE SPEED REEL DRIVE	53
ELECTRIC MOTOR AND WIRING	54
HYDROSTATIC REEL DRIVE HYDRAULICS - 2 MOTOR DRIVE	57
HYDROSTATIC REEL DRIVE HYDRAULICS - 15', 16', 18' AND 20' TABLES	57A
HYDRAULIC MOTOR	58
REEL AND SUPPORTS	61
MF 67 PICK-UP (DRUM) - FRAME, DRUM, GRAIN PAN	65
MF 67 PICK-UP (DRUM) - WINDBAR, WHEELS	66
MF 67 PICK-UP (DRUM) - DRIVE, DRIVE EXTENSION, GUARDS	69
MF 67 PICK-UP (DRAPER) - FRAME, ROLLER, GRAIN PAN, BELTS	70
MF 67 PICK-UP (DRAPER) - WINDBAR, WHEELS	73
MF 67 PICK-UP (DRAPER) - DRIVE, DRIVE EXTENSION, GUARDS	74
ELEVATOR TO TABLE DRIVE	77
ELEVATOR HOUSING	78
ELEVATOR SHIELDS	81
ELEVATOR SHAFT, DRIVE AND PADDLES	82
ELEVATOR DRIVE SHAFT AND CLUTCH	85
ELEVATOR, EXTENSION, TABLE TO CYLINDER - SLAT	86
ELEVATOR TOP SHAFT AND DRIVE - SLAT	89
ELEVATOR TOP SHAFT AND DRIVE - PADDLE TO SLAT CONVERSION	90
ELEVATOR, TABLE TO CYLINDER - PADDLE TO SLAT CONVERSION	93
ELEVATOR CLUTCHES	94
ELEVATOR EXTENSION - PADDLE	97
CYLINDER HOUSING	101
CYLINDER DRIVE - SPEED SINGLE	102
CYLINDER DRIVE	105
VARIABLE SPEED DRIVE CONTROL	109
CYLINDER (RASP-BAR) - REGULAR	110
EDIBLE BEAN ATTACHMENT	114
CYLINDER (SPIKE TOOTH)	117
CONCAVE (RASP-BAR)	118
CONCAVE (SPIKE TOOTH)	121
CONCAVE CONTROL	122
STONE, TRAP, FEED PLATE	125
FRONT BEATER	126
REAR BEATER	129
SHAKER SHOE AND SIEVES	130
GRAIN PAN AND SHAKER SHAFT	133
SCREENS - SHAKER SHOE	134
STRAW WALKERS	137
STRAW WALKERS - MF EUROPE ONLY	141
STRAW WALKERS AND RETURNS ELEVATOR DRIVE	142
RETURNS ELEVATOR	145

TABLE OF CONTENT

RETURNS ELEVATOR CARRIERS	146
RETURNS ELEVATOR SHIELDS	149
GRAIN ELEVATOR	150
GRAIN ELEVATOR DRIVE	153
GRAIN TANK	154
GRAIN TANK - EUROPE ONLY	157
GRAIN TANK UNLOADER EXTENSION	158
GRAIN TANK UNLOADER TOP	161
GRAIN TANK UNLOADER BOTTOM	162
GRAIN TANK UNLOADER DRIVE	165
GRAIN TANK UNLOADER DRIVE SHIELDS	169
FANNING MILL	170
LEFT HAND DRIVE - FANNING MILL	173
LEFT HAND DRIVE IDLERS - FANNING MILL	174
HOOD, CURTAIN AND DEFLECTOR	177
HOOD, CURTAIN AND DEFLECTOR - EUROPE ONLY	178
STRAW SPREADER	181
STRAW SPREADER DRIVE	182
MAIN FRAME	185
FRONT AXLE - 4 SPEED TRANSMISSION	186
FRONT AXLE - HYDROSTATIC TRANSMISSION	187B
FRONT WHEELS	187C
MAIN DRIVE	189
TRACTION CLUTCH - 4 SPEED TRANSMISSION	190
TRACTION DRIVE - HYDROSTATIC TRANSMISSION	194
VARIABLE SPEED TRACTION DRIVE - 4 SPEED TRANSMISSION	197
LEFT FRONT SHIELDS	201
GEAR SHIFT - VARIABLE SPEED TRANSMISSION	202
GEAR SHIFT - HYDROSTATIC TRANSMISSION	205
CONSTANT MESH TRANSMISSION - 4 SPEED, NORTH AMERICA ONLY	206
CONSTANT MESH TRANSMISSION - HYDROSTATIC, NORTH AMERICA ONLY	210
CONSTANT MESH TRANSMISSION - 4 SPEED, EUROPE ONLY	214
CONSTANT MESH TRANSMISSION - HYDROSTATIC, EUROPE ONLY	218
HYDRAULIC CONTROLS - 4 SPEED AND HYDROSTATIC	222
HYDROSTATIC PRESSURE RELEASE CONTROLS	225
HYDROSTATIC PRESSURE RELEASE CONTROLS - EUROPE ONLY	226
HYDROSTATIC TRANSMISSION CONTROLS	229
CONTROL BOX	230
HYDROSTATIC PUMP DRIVE AND MOTOR - SUNDSTRAND PUMP AND MOTOR	233
HYDROSTATIC PUMP DRIVE AND MOTOR - EATON PUMP AND MOTOR	234
HYDROSTATIC PUMP	237
HYDROSTATIC PUMP - EATON	241
CONTROL VALVE, CHARGING PUMP - HYDROSTATIC PUMP	245
PUMP DRIVE MOTOR	246
PUMP DRIVE MOTOR	249
AUXILIARY EQUIPMENT HYDROSTATIC TRANSMISSIONS - CONSTANT MESH	250
FINAL DRIVE - GRAIN AND RICE	253
FINAL DRIVE - RICE-TRACK	257
TURNING BRAKES	258
PARKING BRAKE CONTROL	261
BRAKE CYLINDER, BRAKE ASSEMBLY	262
TRACK FRAME AND AXLE	265
TRACK, IDLER AND ROLLERS - CONVERSION - WHEELS TO TRACK	266
A FRAME, FIXED REAR AXLE, WHEELS - RICE	269
A FRAME, FIXED REAR AXLE, WHEELS - GRAIN	270
ADJUSTABLE REAR AXLE - GRAIN	273
REAR WHEEL DRIVE - AXLE, TIE ROD, WHEELS	274
REAR WHEEL DRIVE - ELECTRICAL WIRING	277
CONTROL VALVE, CHARGING PUMP - USED COMBINE SERIAL NUMBER 1696020321 AND UP	278
REAR WHEEL DRIVE - HYDRAULIC	279B
REAR WHEEL DRIVE - VALVES, SOLENOID	281
MOTOR ASSEMBLY - MOTOR HOUSING AND AXLE YOKE	282
MOTOR ASSEMBLY - WHEEL HUB, CYLINDER HOUSING AND BLOCK	285
MOTOR ASSEMBLY - PLANET PINION, CARRIER, HOUSING	286
MOTOR ASSEMBLY - WHEEL MANIFOLD	289
WALKER BODY	290
WALKER BODY EXTENSION - EUROPE ONLY	293
OPERATOR'S PLATFORM AND LADDER	294

TABLE OF CONTENT

SEAT - CLOTH AND VINYL	297
ENGINE COVER	298
ENGINE COVER EXTENSION AND CYCLONE AIR INTAKE	301
STEERING PEDESTAL	302
STEERING GEAR	305
GREASE HARNESS	306
INSTRUMENTS AND SWITCHES	309
MONITOR SYSTEM	310
ELECTRICAL WIRING - A6-372 DIESEL	314
ELECTRICAL WIRING - AT6 - 354 DIESEL	317
LIGHTING	318
FIELD LIGHTING	321
LIGHTS	322
ROAD LIGHTS - EUROPE ONLY	325
LIGHTS - EUROPE ONLY	326
CLOCK, WARNING HORN	329
TOOL BOX, FUEL TANK AND LINES - DIESEL	330
THROTTLE CONTROL, FUEL SHUT-OFF	333
REEL LIFT HYDRAULICS	334
HYDROSTATIC REEL DRIVE HYDRAULICS	337
HYDROSTATIC REEL DRIVE SHIELDS AND SUPPORT	338
HYDRAULIC CONTROL REEL FORE AND AFT - EUROPE ONLY	341
TABLE LIFT HYDRAULICS	342
TANK UNLOADER HYDRAULICS	345
VARIABLE SPEED HYDRAULICS - 4 SPEED	346
HYDRAULIC PRESSURE AND RETURN LINES	349
STEERING HYDRAULICS	350
HYDRAULIC TANK	353
HYDRAULIC PUMP DRIVE AND ENGINE SUPPORTS	354
HYDRAULIC OIL PUMP	357
MAIN CONTROL VALVE	358
TANK UNLOADER SWING CONTROLS	361
HYDRAULIC CYLINDERS	362
HYDRAULIC CYLINDERS	365
HYDRAULIC CYLINDERS	366
STEERING CONTROL UNIT	369
HYDROSTATIC STEERING CYLINDER	370
HYDRAULIC OIL FILTERS	373
TABLE HEIGHT CONTROL - FLOATING CUTTER BAR	374
TABLE HEIGHT CONTROL - RIGID CUTTER BAR	377
TABLE HEIGHT CONTROL - FLOATING CUTTER BAR	378
TABLE HEIGHT CONTROL - RIGID CUTTER BAR	381
REAR MOTOR HOUSING	382
BELTS	385
CHAINS	386
CHAINS	389
CHAINS	390
CHAINS - CONVEYOR	393
CHAINS	394
EMBLEMS AND LABELS - NORTH AMERICA	398
EMBLEMS AND LABELS - FRENCH CANADIAN	401
EMBLEMS AND LABELS	402
CYLINDER BLOCK - A6-372.4 DIESEL	405
PISTONS, RINGS AND RODS - A6-372.4 DIESEL	406
CRANKSHAFT & FLYWHEEL - A6-372.4 DIESEL	409
CAMSHAFT AND TIMING GEARS - A6-372.4 DIESEL	410
CYLINDER HEAD - A6-372.4 DIESEL	413
CYLINDER HEAD COVER - A6-372.4 DIESEL	414
OIL PAN, PUMP AND FILTER - A6-372.4 DIESEL	417
GASKET SETS - A6-372.4 DIESEL	418
WATER PUMP - A6-372.4 DIESEL	421
MANIFOLDS - A6-372.4 DIESEL	422
INJECTION SYSTEM - A6-372.4 DIESEL	425
FUEL INJECTION PUMP - A6-372.4 DIESEL	426
FUEL FILTERS AND LINES	429
CYLINDER BLOCK - AT6-354.4 DIESEL	430
CRANKSHAFT, FLYWHEEL, INSERTS - AT6-354.4 DIESEL	433
PISTONS, RINGS AND RODS - AT6-354.4 DIESEL	434

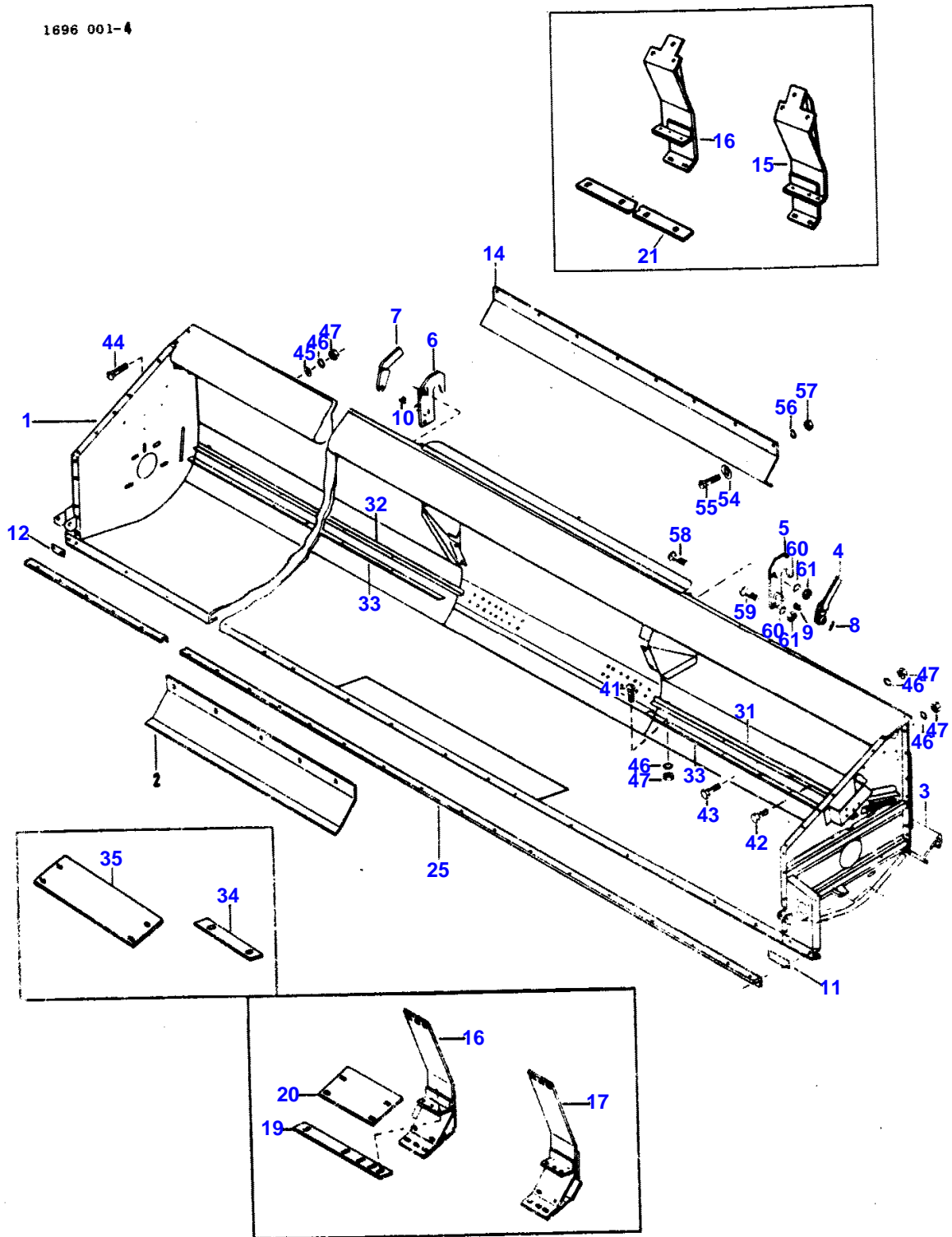
TABLE OF CONTENT

CYLINDER HEAD - AT6-354.4 DIESEL	437
CYLINDER HEAD COVER - AT6-354.4 DIESEL	438
TIMING GEAR AND CAMSHAFT - AT6-354.4 DIESEL	441
OIL PAN, PUMP AND FILTER - AT6-354.4 DIESEL	442
OIL COOLER AND FILTER - AT6-354.4 DIESEL	445
GASKET SETS - AT6-354.4 DIESEL	446
WATER PUMP AND ATTACHING PARTS - AT6-354.4 DIESEL	449
MANIFOLDS - AT6-354.4 DIESEL	450
INJECTION SYSTEM - AT6-354.4 DIESEL	453
INJECTION PUMP AND INJECTOR - AT6-354.4 DIESEL	454
TURBOCHARGER - AT6-354.4 DIESEL	457
FUEL FILTERS AND LINES - AT6-354.4 DIESEL	458
LIFT PUMP AND FUEL FILTER - AT6-354.4 DIESEL	461
AIR INTAKE AND EXHAUST - A6-372.4 DIESEL	462
AIR INTAKE AND EXHAUST - AT6-354.4 DIESEL	465
RADIATOR, FAN, DRIVE - A6-372.4 DIESEL	466
SCREENS - RADIATOR, FAN, DRIVE	470
RADIATOR, FAN, DRIVE - AT6-354.4 DIESEL	473
PRE-CLEANER AND PRE-SCREENER - EXTREME DUSTY CONDITIONS	477
ALTERNATOR	478
STARTER	481
SOLENOID	482
ELECTRIC ETHER STARTING KIT	485
COLD WEATHER START KIT	486
STRAW CHOPPER - DRIVE ASSEMBLY	489
STRAW CHOPPER - DRIVE ASSEMBLY	493
STRAW CHOPPER - REAR DRIVE SHIELDS	497
CHOPPER ALARM SYSTEM	498
STRAW CHOPPER	501
HOUSING, ADAPTER AND ROTOR - EUROPE ONLY	502
STRAW CHOPPER - CORN KIT	505
CAB - SHEET METAL, WINDOWS	506
CAB - SEALING AND TRIM	509
COMPRESSOR, EVAPORATOR, CONDENSOR	510
COMPRESSOR	511B
AIR CONDITIONING LINES	513
CAB ELECTRICAL WIRING	514
PRESSURIZER	517
HEATER	518
WINDSHIELD WIPER - EUROPE ONLY	521
PICK-UP REEL - GRAIN - 6 SPACING - 5 BAT	525
PICK-UP REEL - GRAIN - 6 SPACING - 6 BAT	526
PICK-UP REEL - RICE - 4 SPACING - 6 BAT	529
PICK-UP REEL - DRAPER TABLE	530
CLUTCH - COMBINE PICK-UP REEL	533
CLUTCH, END SHIELDS - PICK-UP REEL - DRAPER TABLE	534
DRAPER TABLE	537
AUGER - DRAPER TABLE	541
WOBBLE KNIFE DRIVE	542
DRIVES, KNIFE AND AUGER - DRAPER TABLE	545
DRAPER AND DRIVE	546
REEL ARMS DIVIDERS AND SHIELDS - DRAPER TABLE	549
REEL DRIVE HYDRAULICS - DRAPER TABLE	550
REEL LIFT, HYDRAULICS - DRAPER TABLE	553
CONTROL VALVE - HEADER HEIGHT	554
CONTROL VALVE - TABLE HEIGHT, REEL FORE AND AFT	557
CONTROL VALVE SECTION - EUROPE ONLY	558
ACCESSORIES - PAINT	561

2

TABLE

1696 001-4



80-49

651 435 M91 (Issue 2) 5/80

TABLE - RIGID CUTTER BAR

Item	Part Number	Qty	Description	Comments
				RIGID CUTTER BAR
1	245965M91	1	Table	(A, D)
	264450M91	1	Table	(B, D)
2	261580M1	1	Extension	(D)
3	261581M1	1	Support	(D)
1	264454M91	1	Table	(E)
	264456M92	1	Table	(F)
4	262013M92	1	Cam	(D, E, F)
5	261516M91	1	Plate	(D, E, F)
6	261517M91	1	Plate	(D, E, F)
7	262012M92	1	Cam	(D, E, F)
8	363307X1	2	Pin	(D, E, F) 3/16 X 1-1/8"
9	261641M1	1	Spring	(D, E, F) Left Hand
10	261640M1	1	Spring	(D, E, F) Right Hand
11	369141X1	1	Plate	(D, E, F)
12	369142X1	1	Plate	(D, E, F)
14	264022M91	1	Cowl	(D, E, F)
15	281984M91	1	Plate	(C, D, E, F) Left Hand
16	281983M91	1	Plate	(C, D, E, F) Right Hand
17	272131M92	1	Plate	(D, E, F) Left Hand
18	272137M92	1	Plate	(D, E, F) Right Hand
19	272141M1	2	Plate	(D, E, F)
20	272142M1	2	Plate	(D, E, F)
21	282020M1	2	Strap	(C, D, E, F)
25	260707M1	1	Anglepiece	(D)
	260802M2	1	Knife	(E)
	260803M2	1	Anglepiece	(F)
31	261573M1	1	Anglepiece	(D) Left Hand
31	264057M1	1	Angle	(E) Left Hand
31	261534M1	1	Anglepiece	(F) Left Hand
32	261572M1	1	Anglepiece	(D) Right Hand
32	264059M1	1	Angle	(E) Right Hand
32	261535M1	1	Anglepiece	(F) Right Hand
33	261574M1	2	Strap	(D)
	264058M1	2	Strap	(E)
	261488M1	2	Plate	(F)
34	272144M1	2	Plate	(D, E, F)
35	272143M1	2	Plate	(D, E, F)
41	364352X1	AR	Bolt Unc	(D, E, F)
42	353677X1	AR	Screw Unc	(D, E, F)
43	353678X1	AR	Screw Unc	(D, E, F)
44	364533X1	AR	Bolt	(D, E, F)
45	353755X1	AR	Washer	(D, E, F) 5/16"
46	353446X1	AR	Lock Washer	(D, E, F) 5/16"
47	355565X1	AR	Nut Unc	(D, E, F)
54	49307X	AR	Washer	(D, E, F) 7/16"
55	360513X1	AR	Screw	(D, E, F)
56	353434X1	AR	Lock Washer	(D, E, F) 3/8"
57	355566X1	AR	Nut Unc	(D, E, F)
58	261006M1	AR	Bolt	(D, E, F)
59	363423X1	AR	Bolt	(D, E, F)
60	353433X1	AR	Lock Washer	(D, E, F) 5/8"

MASSEY FERGUSON

MF 750 COMBINE, |-> 1696019596 - 651435EA

651435EA

TABLE - RIGID CUTTER BAR

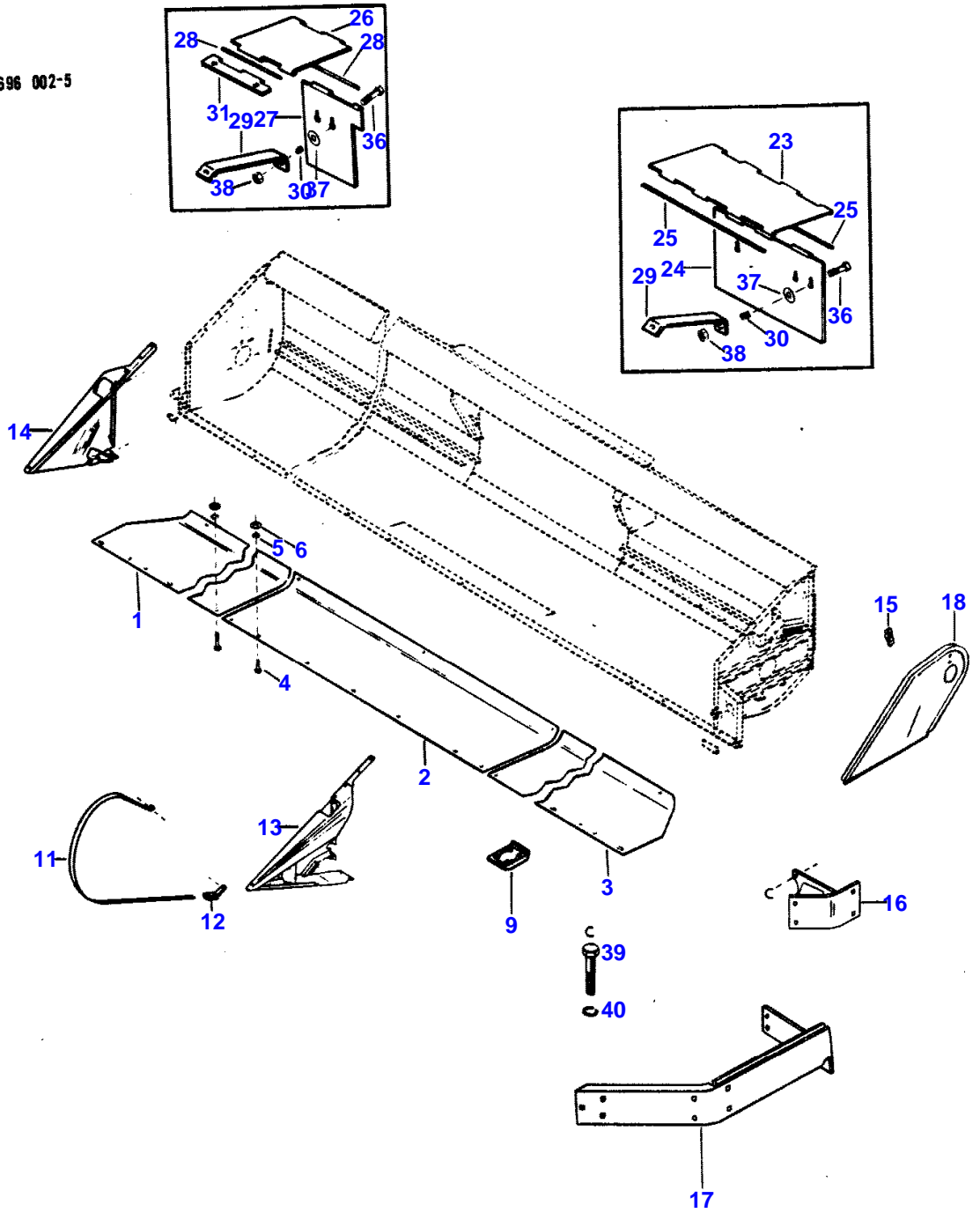
2

Item	Part Number	Qty	Description	Comments
61	375099X1	AR	Nut Unc	(D, E, F) (A) USED TABLE SERIAL NUMBER 1859063877 AND UP (B) USED PRIOR TO TABLE SERIAL NUMBER 1859063877 (C) EUROPE ONLY (D) 13' (E) 15' (F) 16'

TABLE PLATES, SHIELDS AND DIVIDERS

5

1696 002-5



80-49

651 435 M91 (Issue 2) 5/80

TABLE PLATES, SHIELDS AND DIVIDERS - RIGID CUTTER BAR

Item	Part Number	Qty	Description	Comments
				RIGID CUTTER BAR
1	261596M91	1	Plate	(D) Right Hand
1	264040M91	1	Plate	(E) Right Hand
1	261564M91	1	Plate	(F) Right Hand
2	261562M91	1	Plate	(E, F)
3	261597M91	1	Plate	(D) Left Hand
3	264038M91	1	Plate	(E) Left Hand
3	261565M91	1	Plate	(F) Left Hand
4	353691X1	26	Screw Unc	(D)
	353691X1	30	Screw Unc	(E)
	353691X1	32	Screw Unc	(F)
5	353434X1	26	Lock Washer	(D) 3/8"
5	353434X1	30	Lock Washer	(E) 3/8"
5	353434X1	32	Lock Washer	(F)
6	353756X1	26	Washer	(D)
	353756X1	30	Washer	(E)
	353756X1	32	Washer	(F)
9	261568M1	5	Shoe	(D)
	261568M1	6	Shoe	(E)
	261568M1	7	Shoe	(F)
11	239746M1	2	Cowl	(D, E, F)
12	236125M91	2	Bearer	(D, E, F)
13	260683M95	1	Divider	(D, E, F) Left Hand
14	260676M95	1	Divider	(D, E, F) Right Hand
15	261408M1	1	Bearer	(D, E, F) Left Hand
16	264446M91	1	Support	(D, E, F) Left Hand
17	261726M91	1	Cowl	(D, E, F) Left Hand
18	261409M91	1	Cowl	(D, E, F) Left Hand
23	245924M1	1	Shield	(A, D, E, F) Left Hand
24	245925M1	1	Shield	(A, D, E, F) Left Hand
25	360985X1	2	Rod	(A, D, E, F) 1/4 X 12-1/16"
26	261623M1	1	Cowl	(B, D, E, F)
27	261626M1	1	Cowl	(B, D, E, F)
28	365695X1	2	Pin	(C, D, E, F) 1/4 X 5-3/4"
29	261624M1	3	Bearer	(B, D, E, F)
30	261625M1	3	Spring	(B, D, E, F)
31	261622M1	1	Hinge	(B, D, E, F)
36	355156X1	AR	Screw Unc	(D, E, F)
37	368371X1	AR	Washer	(D, E, F) 11/32 X 1-1/4 X .075"
38	375108X1	AR	Nut Unc	(D, E, F)
39	353725X1	AR	Bolt Unc	(E, F)
40	353439X1	AR	Lock Washer	(E, F) 1/2" (A) USED LATE PRODUCTION TABLES. (B) QUANTITY WAS 2 ON EARLY PRODUCTION TABLES. (C) QUANTITY WAS 4 ON EARLY PRODUCTION TABLES (D)

MASSEY FERGUSON

MF 750 COMBINE, |-> 1696019596 - 651435EA

651435EA

TABLE PLATES, SHIELDS AND DIVIDERS - RIGID CUTTER BAR

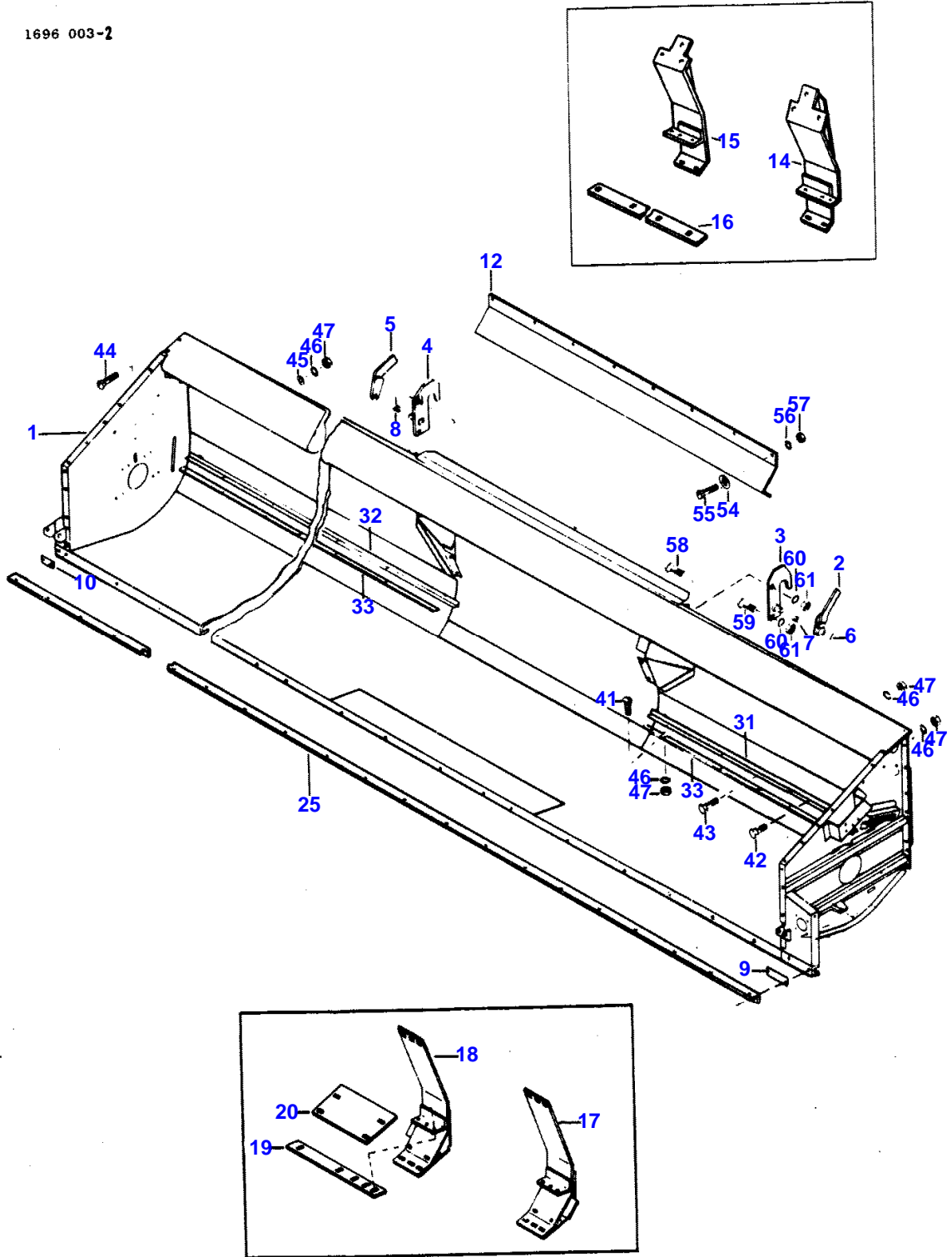
5

Item	Part Number	Qty	Description	Comments
				13'
				(E)
				15'
				(F)
				16'

6

TABLE

1696 003-2



80-49

651 435 M91 (Issue 2) 5/80

TABLE - RIGID CUTTER BAR

Item	Part Number	Qty	Description	Comments
				RIGID CUTTER BAR
1	264458M92	1	Table	(B)
	264459M92	1	Table	(C)
	264460M92	1	Table	(D)
	264461M92	1	Table	(E)
2	262013M92	1	Cam	(B, C, D, E)
3	261516M91	1	Plate	(B, C, D, E)
4	261517M91	1	Plate	(B, C, D, E)
5	262012M92	1	Cam	(B, C, D, E)
6	363307X1	2	Pin	(B, C, D, E) 3/16 X 1-1/8"
7	261641M1	1	Spring	(B, C, D, E) Left Hand
8	261640M1	1	Spring	(B, C, D, E) Left Hand
9	369141X1	1	Plate	(B, C, D, E)
10	369142X1	1	Plate	(B, C, D, E)
12	264022M91	1	Cowl	(B, C, D, E)
14	281984M91	1	Plate	(A, B, C, D, E) Left Hand
15	281983M91	1	Plate	(A, B, C, D, E) Right Hand
16	282020M1	2	Strap	(A, B, C, D, E)
17	272131M92	1	Plate	(B, C, D, E) Left Hand
18	272137M92	1	Plate	(B, C, D, E) Right Hand
19	272141M1	2	Plate	(B, C, D, E)
20	272142M1	2	Plate	(B, C, D, E)
25	260861M2	1	Anglepiece	(B)
	260862M3	1	Anglepiece	(C, D)
	261769M1	1	Angle	(E)
31	261674M1	1	Anglepiece	(B) Left Hand
31	261520M1	1	Anglepiece	(C) Left Hand
31	470138M1	1	Angle	(D) Left Hand
31	261770M1	1	Angle	(E) Left Hand
32	261673M1	1	Anglepiece	(B) Right Hand
32	261518M1	1	Anglepiece	(C) Right Hand
32	470137M1	1	Angle	(D) Right Hand
32	261768M1	1	Angle	(E) Right Hand
33	261675M1	2	Plate	(B)
	261521M1	2	Strap	(C)
	470135M1	1	Strap	(D) Right Hand
33	470136M1	1	Strap	(D) Left Hand
33	261771M1	2	Strap	(E)
41	364352X1	AR	Bolt Unc	(B, C, D, E)
42	353677X1	AR	Screw Unc	(B, C, D, E)
43	353678X1	AR	Screw Unc	(B, C, D, E)
44	364533X1	AR	Bolt	(B, C, D, E)
45	353755X1	AR	Washer	(B, C, D, E) 5/16"
46	353446X1	AR	Lock Washer	(B, C, D, E) 5/16"
47	355565X1	AR	Nut Unc	(B, C, D, E)
54	049307X	AR	Washer	(B, C, D, E) 7/16"
55	360513X1	AR	Screw	(B, C, D, E)
56	353434X1	AR	Lock Washer	(B, C, D, E) 3/8"
57	355566X1	AR	Nut Unc	(B, C, D, E)

MASSEY FERGUSON

MF 750 COMBINE, |-> 1696019596 - 651435EA

651435EA

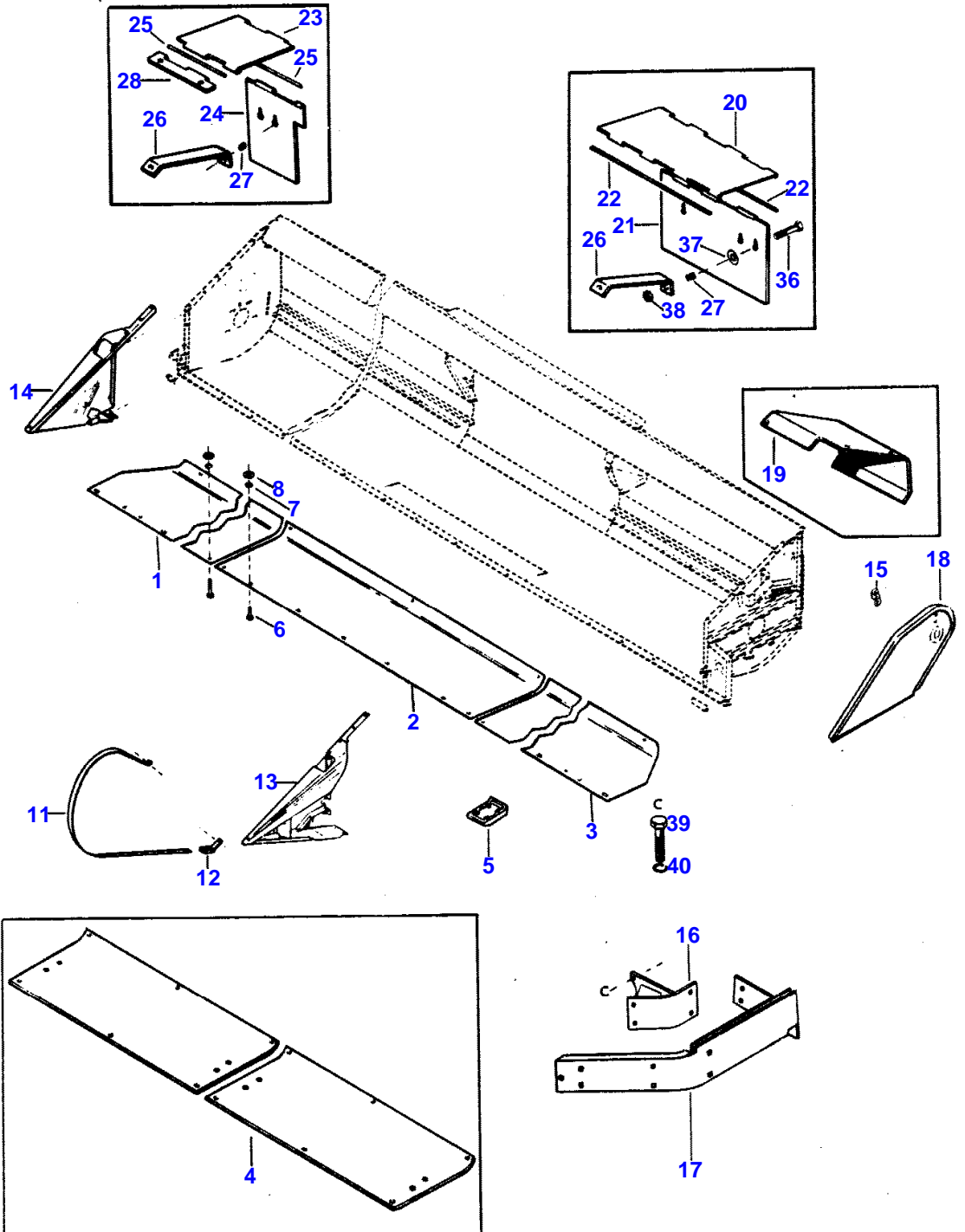
TABLE - RIGID CUTTER BAR

6

Item	Part Number	Qty	Description	Comments
58	261006M1	AR	Bolt	(B, C, D, E)
59	363423X1	AR	Bolt	(B, C, D, E)
60	353433X1	AR	Lock Washer	(B, C, D, E) 5/8"
61	375099X1	AR	Nut Unc	(B, C, D, E) (A) EUROPE ONLY (B) 18' (C) 20' (D) 20' (E) 24'

TABLE

1696 004-4



Buy Now



Our support email:

ebooklibonline@outlook.com