

Page Title	Page Number
TABLE (1859 SERIES) (RIGID CUTTER BAR)	2
TABLE BOTTOM PLATES, SHIELDS AND DIVIDERS	5
TABLE (2381 SERIES) (RIGID AND FLOATING CUTTER BAR)	6
TABLE DIVIDERS AND SHIELDS (2381 SERIES)	9
TABLE (1859 SERIES) (FLOATING CUTTER BAR)	10
CUTTER BAR (FLOATING) (15', 16', 18', 20', 22')	13
DIVIDERS AND SHIELDS (FLOATING CUTTER BAR) (REGULAR FIXED)	14
SHIELDS, SUPPORTS AND BRACKETS (FLOATING CUTTER BAR)	17
FLOATING DIVIDERS (FLOATING CUTTER BAR)	18
COUNTER BALANCE, ARM, IDLER, SPRING ASSEMBLY	21
COUNTER BALANCE AND IDLERS (22' FLOATING CUTTER BAR)	22
SPRING AND LOOP ASSEMBLY (22' FLOATING CUTTER BAR)	25
AUGER (1859 SERIES) (13', 15', 16', 18' AND 20' TABLES)	26
AUGER (2381 SERIES) (22' AND 24' TABLES)	30
KNIFE (1859 SERIES) (RIGID CUTTER BAR) (15', 16', 18', 20')	33
KNIFE (2381 SERIES) (RIGID CUTTER BAR) (22', 24')	34
KNIFE (FLOATING CUTTER BAR) (15', 16', 18', 20', 22')	37
WOBBLE KNIFE DRIVE (ALL TABLES)	38
TABLE DRIVE (13, 15 AND 16" TABLE) (1859 SERIES)	41
TABLE DRIVE (18' AND 20' TABLE) (1859 SERIES) (RIGID, FLOAT)	45
REEL DRIVE (1859 SERIES)	49
REEL DRIVE (1859 SERIES)	50
REEL DRIVE (ELECTRIC VARIABLE SPEED REEL DRIVE)	53
ELECTRIC VARIABLE SPEED REEL DRIVE (1859 SERIES)	54
ELECTRIC MOTOR AND WIRING	57
SINGLE MOTOR HYDROSTATIC REEL DRIVE (1859 SERIES)	58
2 MOTOR HYDROSTATIC REEL DRIVE (1859 SERIES)	61
HYDRAULIC MOTOR (1859 SERIES)	62
REEL AND SUPPORTS (1859 SERIES)	65
PICK-UP REEL (GRAIN - 6" SPACING - 5 BAT)	66
PICK-UP REEL (GRAIN - 6" SPACING - 6 BAT) (2759 SERIES REEL)	69
PICK-UP REEL (RICE - 4" SPACING - 6 BAT) (2759 SERIES REEL)	70
PICK-UP REEL (GRAIN - 6" SPACING 5 AND 6 BAT)	73
SLIP CLUTCH (VARIABLE SPEED CHIAN DRIVE)	74
REEL LIFT (1859 SERIES) (15', 16', 18' AND 20' TABLES)	77
REEL LIFT CYLINDERS (1859 SERIES)	78
TABLE DRIVE (2381 SERIES) (22' AND 24' RIGID CUTTER BAR)	81
HYDROSTATIC REEL DRIVE, RIGHT SIDE (2381 SERIES)	82
HYDROSTATIC REEL DRIVE, LEFT SIDE (2381 SERIES)	85
HYDRAULIC PUMP AND RESERVOIR (2381 SERIES)	86
HYDRAULIC MOTOR (2381 SERIES) (22' AND 24' TABLES)	89
REEL AND SUPPORTS (2381 SERIES) (22' AND 24' TABLES)	90
REEL LIFT HYDRAULICS (2381 SERIES) (22' AND 24' TABLES)	93
REEL LIFT CYLINDERS (2381 SERIES) (22' AND 24' TABLES)	94
TABLE HEIGHT CONTROL (1859 SERIES)	97
TABLE HEIGHT CONTROL (1859 SERIES)	98
TABLE HEIGHT CONTROL (1859 SERIES)	101
TABLE HEIGHT CONTROL (1859 SERIES)	102
TABLE HEIGHT CONTROL (2381 SERIES)	105
ELEVATOR TO TABLE DRIVE (PADDLE)	106
RIGHT HAND DRIVE (PADDLE ELEVATOR)	109
ELEVATOR, TOP SHAFT AND PADDLE (PADDLE)	110
ELEVATOR SHAFTS, DRIVES AND PADDLES (PADDLE)	113
ELEVATOR EXTENSION (PADDLE)	114
ELEVATOR TOP SHAFT AND DRIVE	118
RIGHT HAND DRIVE (SLAT ELEVATOR)	121
ELEVATOR AND EXTENSION (SLAT)	122
ELEVATOR CLUTCH	126
ELEVATOR SHIELDS (PADDLE, SLAT)	129
CYLINDER HOUSING	130
CYLINDER DRIVE (SPEED, SING./DOUBLE)	133
CYLINDER DRIVE	134
VARIABLE SPEED DRIVE CONTROL	138
CYLINDER (RASP BAR)	141
EDIBLE BEAN ATTACHMENT	142
CYLINDER (SPIKE TOOTH)	145
CONCAVE (RASPBAR) (WIDE, AND NARROW)	146
CONCAVE (SPIKE TOOTH)	149

## TABLE OF CONTENT

CONCAVE CONTROL	150
STONE TRAP FEED PLATE	153
FRONT BEATER	154
REAR BEATER	157
WALKER BODY	158
WALKER BODY EXTENSION	161
STRAW WALKERS (GRAIN AND RICE)	162
STRAW WALKERS & RETURNS ELEVATOR DRIVE	166
STRAW WALKER DRIVE SHIELD (850, 855)	169
GRAIN PAN AND SHAKER SHAFT	170
FANNING MILL	173
SHAKER SHOE AND SIEVES	174
SCREENS	177
HOOD, CURTAIN AND DEFLECTOR	178
HOOD (MF 855 COMBINE)	181
STRAW SPREADER	182
STRAW SPREADER DRIVE	185
LEFT HAND DRIVE (FANNING MILL)	186
LEFT HAND DRIVE IDLERS (FANNING MILL)	189
GRAIN TANK	190
GRAIN TANK EXTENSION	191B
GRAIN ELEVATOR	191C
GRAIN ELEVATOR	193
GRAIN ELEVATOR DRIVE	194
GRAIN TANK UNLOADER BOTTOM	197
GRAIN TANK UNLOADER TOP	198
GRAIN TANK UNLOADER EXTENSION	201
GRAIN TANK UNLOADER DRIVE	202
RETURNS ELEVATOR	205
RETURNS ELEVATOR CARRIER	206
LEFT SIDE SHIELDS (MUD AND GRAIN TANK UNLOADER DRIVE)	210
STRAW CHOPPER DRIVE	213
STRAW CHOPPER	217
STRAW CHOPPER (CORN KIT) (WITH SLOW-DOWN)	218
RIGHT SIDE SHIELDS	221
MAIN FRAME	222
FRONT AXLE, SHAFTS AND COUPLINGS	225
FRONT AXLE, SHAFTS AND COUPLINGS (HYDROSTATIC TRANSMISSION)	226
FRONT WHEELS (GRAIN, RICE)	229
REAR MOTOR HOUSING	230
REAR MOTOR HOUSING	233
MAIN DRIVE AND CONTROLS (NO. REQUIRED 354.4CC, 354.4)	234
TRACTION DRIVE (HYDROSTATIC TRANSMISSION)	237
VARIABLE SPEED TRACTION DRIVE (4 SPEED TRANSMISSION)	238
TRACTION CLUTCH (4 SPEED TRANSMISSION)	242
GEAR SHIFT (4 SPEED TRANSMISSION)	246
GEAR SHIFT (HYDROSTATIC TRANSMISSION)	249
STEERING PEDESTAL (USED LATE PRODUCTION)	250
STEERING PEDESTAL (USED EARLY PRODUCTION)	253
STEERING WHEEL COLUMN AND CONTROL UNIT	254
STEERING WHEEL, COLUMN AND CONTROL UNIT	257
CONSTANT MESH TRANSMISSION	258
CONSTANT MESH TRANSMISSION	262
CONSTANT MESH TRANSMISSION	266
HYDROSTATIC TRANSMISSION CONTROLS	270
HYDROSTATIC PRESSURE RELEASE CONTROLS	273
HYDROSTATIC PUMP DRIVE AND MOTOR	274
HYDROSTATIC PUMP DRIVE AND MOTOR	277
HYDROSTATIC PUMP (SUNDSTRAND)	278
PUMP DRIVE MOTOR (SUNDSTRAND)	282
HYDROSTATIC PUMP (EATON)	285
HYDROSTATIC PUMP (EATON)	289
CONTROL VALVE CHARGING PUMP (EATON)	293
PUMP DRIVE MOTOR (EATON)	294
PUMP DRIVE MOTOR (EATON)	297
HYDROSTATIC COOLING SYSTEM	298
HYDROSTATIC COOLING SYSTEM	301
OIL COOLER AND FAN AND DRIVE	301A
OIL COOLER FAN DRIVE	302

## TABLE OF CONTENT

FINAL DRIVE (GRAIN AND RICE - RUBBER) (LEFT AND RIGHT)	305
FINAL DRIVE (RICE - TRACKS) (LEFT/RIGHT)	306
PARKING BRAKE CONTROLS (NORTH AMERICA, EUROPE)	309
TURNING BRAKES	310
BRAKE CYLINDER, BRAKE ASSEMBLY	313
TRACK FRAME AND AXLE (CONVERSION - WHEELS TO TRACK)	314
TRACK, IDLER AND ROLLERS (CONVERSION - WHEELS TO TRACK)	317
REAR WHEELS (SEE HARVESTING SERVICE BULLETIN #81-33)	318
"A" FRAME (GRAIN AND RICE)	321
FIXED REAR AXLE (GRAIN)	322
"A" FRAME, FIXED REAR AXLE, WHEELS (GRAIN)	325
ADJUSTABLE REAR AXLE	326
ADJUSTABLE REAR AXLE (GRAIN)	329
ADJUSTABLE REAR AXLE (POWERED REAR DRIVE) (GRAIN, RICE)	330
ADJUSTABLE REAR AXLE (POWERED REAR DRIVE) (HYDRAULICS)	333
HYDRAULIC PUMP	334
HYDRAULIC PUMP	414
PLANETARY GEAR BOX (POWERED REAR DRIVE)	337
SELECTOR VALVE (POWERED REAR DRIVE)	338
REAR WHEEL DRIVE, ADJUSTABLE AXLE	341
REAR WHEEL DRIVE, ADJUSTABLE AXLE (GRAIN)	342
CONTROL VALVE, CHARGING PUMP	345
MOTOR ASSEMBLY (MOTOR HOUSING AND AXLE YOKE)	346
MOTOR ASSEMBLY	349
MOTOR ASSEMBLY (WHEEL MANIFOLD)	350
MOTOR ASSEMBLY (PLANET PINION, CARRIER, HOUSING)	353
REAR WHEEL DRIVE CONTROL VALVE	354
REAR WHEEL DRIVE WIRING (ELECTRICAL WIRING)	357
OPERATOR'S PLATFORM AND LADDER	358
CONTROL BOX	361
INSTRUMENTS AND SWITCHES	362
MONITOR SYSTEM	365
GRAIN LOSS MONITOR (SERIAL NUMBER 169625658 TO 169627544)	367B
BATTERY AND WIRING (A6-3724 AND AT6 3544-ENGINES)	369
ALTERNATOR	370
STARTER	373
SOLENOID	374
LIGHTING	377
LIGHTS	378
FLOODLIGHTS	381
ROAD LIGHTS (EUROPE ONLY)	382
LIGHTS (EUROPE ONLY)	385
ELECTRIC ETHER STARTING KIT	386
SEAT	389
SEAT	389A
ENGINE COVER	390
ENGINE COVER EXTENSION	393
ROTARY AIR INTAKE AND DRIVE	397
CHAFF EXTRACTOR (FIELD INSTALLED)	397A
FUEL TANK, LINES, SUPPORTS AND TOOL BOX	398
HYDRAULIC CONTROLS (4 SPEED AND HYDROSTATIC)	401
MAIN HYDRAULIC CONTROL VALVE (3 SPOOL)	402
HYDROSTATIC REEL DRIVE HYDRAULICS (ELECTRIC CONTROLLED)	405
HYDROSTATIC REEL DRIVE HYDRAULICS	406
FLOW CONTROL VALVE	409
HYDRAULIC PRESSURE AND RETURN LINES	410
HYDRAULIC PRESSURE AND RETURN LINES	413
CONTROL VALVE (TABLE HEIGHT)	417
CONTROL VALVE (TABLE HEIGHT, REEL FORE AND AFT)	418
CONTROL VALVE SECTION (EUROPE ONLY)	421
HYDRAULIC TANK (USE COMBINE SERIAL NUMBER 169627493 AND UP)	422
REEL LIFT HYDRAULICS	425
HYDRAULIC CONTROL REEL FORE AND AFT (FLOATATION ACCUMULATOR)	426
TABLE LIFT HYDRAULICS (GR. RICE RUBR, RICE TRAC)	429
TABLE LIFT CYLINDER (GR. AND RICE RUB, GR AND RICE TRK)	430
FLOATATION ACCUMULATOR	431B
TANK UNLOADER SWING CONTROLS	433
TANK UNLOADER HYDRAULICS	434
UNLOADER CYLINDER	437
VARIABLE SPEED HYDRAULICS (4 SPEED)	438

## TABLE OF CONTENT

VARIABLE SPEED CYLINDER	441
STEERING HYDRAULICS	442
STEERING HYDRAULICS	445
HYDRAULIC STEERING CYLINDER	449
HYDRAULIC PUMP DRIVE AND ENGINE SUPPORTS	450
GREASE HARNESS	453
BELTS	454
CHAINS	457
CHAINS	458
CHAINS (PADDLE ELEVATOR)	461
CHAINS (SLAT ELEVATOR)	462
CONVEYOR CHAIN	465
EMBLEMS AND LABELS	466
EMBLEMS AND LABELS (EUROPE ONLY)	469
EMBLEMS AND LABELS (FRENCH CANADIAN)	470
EMBLEMS AND LABELS (EUROPE - FRENCH AND GERMAN)	473
PAINT, OIL, TOOLS (ACCESSORIES)	474
CYLINDER BLOCK (A6-372.4 DIESEL)	477
CRANKSHAFT AND FLYWHEEL (CRANKSHAFT, FLYWHEEL, INSERTS)	478
PISTONS, RINGS AND RODS	481
CAMSHAFT AND TIMING GEAR (A6-372.4 DIESEL)	482
CYLINDER HEAD (A6-372.4 DIESEL)	485
CYLINDER HEAD COVER (A6-372.4 DIESEL)	486
CYLINDER HEAD COVER (A6-372.4 DIESEL)	489
OIL PAN, PUMP AND FILTER (A6-372.4 DIESEL)	490
GASKET SETS (A6-372.4 DIESEL)	493
WATER PUMP (A6-372.4 DIESEL)	494
MANIFOLDS (A6-372.4 DIESEL)	497
INJECTION SYSTEM (A6-372.4 DIESEL)	498
FUEL INJECTION PUMP (A6-372.4 DIESEL)	501
FUEL FILTERS AND LINES (A6-372.4 DIESEL)	502
AIR INTAKE AND EXHAUST (A6-372.4 DIESEL)	505
AIR INTAKE AND EXHAUST (A6-372.4 DIESEL)	506
CYLINDER BLOCK (AT6-354.4CC AND A6354.4 DIESEL)	509
CRANKSHAFT, FLYWHEEL, INSERTS	510
PISTON RINGS AND RODS (AT6-354.4CC AND AT6354.4 DIESEL)	513
CYLINDER HEAD (AT6-354.4CC AND AT6-354.4 DIESEL)	514
CYLINDER HEAD COVER (AT6-354.4CC AND AT6-354.4 DIESEL)	517
CYLINDER HEAD COVER (AT6-345.4 DIESEL)	518
TIMING GEAR AND CAMSHAFT (AT6-354.4CC AND AT6-354.4 DIESEL)	521
OIL PAN, FILTER AND PUMP (AT6-354.4CC AND AT6-354.4 DIESEL)	522
OIL COOLER AND FILTER (354.4CC, 354.4)	525
GASKET SETS (AT6-354.4CC DIESEL)	526
GASKET SETS (AT6-354.4 DIESEL)	529
WATER PUMP AND ATTACHING PARTS	530
MANIFOLD AND TURBOCHARGER (AT6-354.4CC DIESEL)	533
MANIFOLDS AND TURBOCHARGER (AT6-354.4 DIESEL)	537
INJECTION SYSTEM (AT6-354.4CC AND AT6-354.4 DIESEL)	538
INJECTION PUMP AND INJECTOR	541
TURBOCHARGER (AT6-354.4CC AND AT6-354.4 DIESEL)	542
FUEL FILTERS AND LINES (AT6-354.4CC AND AT6-354.4 DIESEL)	545
LIFT PUMP AND FUEL FILTER	546
AIR INTAKE AND EXHAUST (AT6-354.4CC DIESEL)	549
AIR INTAKE AND EXHAUST (AT6-354.4 DIESEL)	550
PRE-CLEANER, PRE-SCREENER (EXTREME DUSTY CONDITIONS)	553
THROTTLE CONTROL AND FUEL SHUT-OFF	554
RADIATOR, RAN, DRIVE (A6-372.4 DIESEL)	557
RADIATOR, FAN, DRIVE (AT6-354.4 DIESEL)	561
SCREENS (RADIATOR, FAN, DRIVE) (UNITED KINGDOM)	565
CAB (SHEET METAL, WINDOWS)	566
CAB (SEALING AND TRIM)	569
CAB (SEALING AND TRIM - CONT'D)	570
COMPRESSOR, EVAPORATOR AND CONDENSER	571B
COMPRESSOR, EVAPORATOR AND CONDENSER	571C
COMPRESSOR (USED COMBINE SERIAL NUMBER 169627493 AND UP)	573
COMPRESSOR (USED PRIOR TO COMBINE SERIAL NUMBER 169627493)	574
AIR CONDITIONING AND LINES	575B
AIR CONDITIONING AND LINES	577
AIR CONDITIONING AND LINES	578

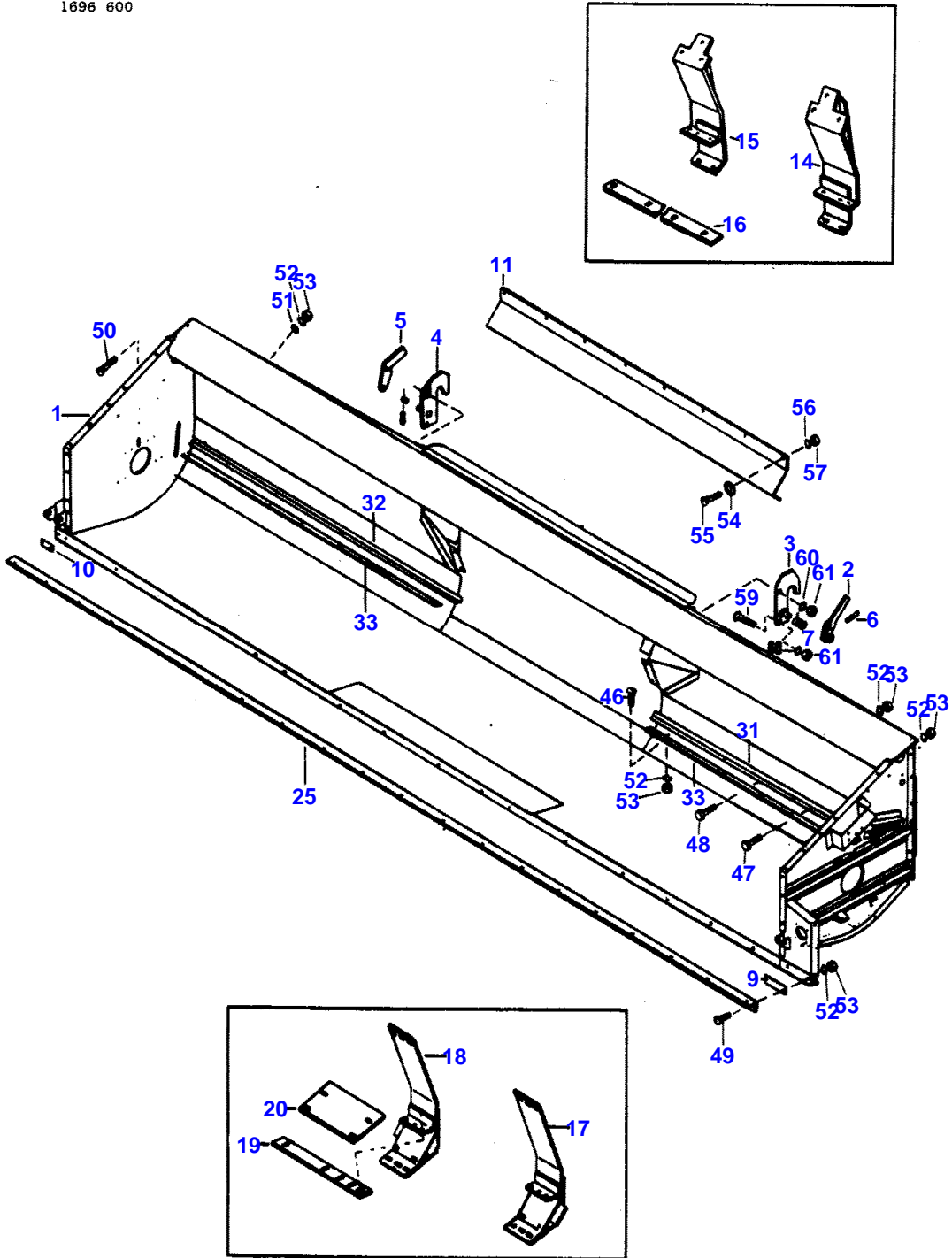
TABLE OF CONTENT

CAB ELECTRICAL WIRING	581
PRESSURIZER	582
HEATER (USED COMBINE SERIAL NUMBER 169623662 AND UP)	585
HEATER (USED PRIOR TO COMBINE SERIAL NUMBER 169623662)	586
WINDSHIELD WIPER (EUROPE ONLY)	589

2

TABLE

1696 600



1st Print

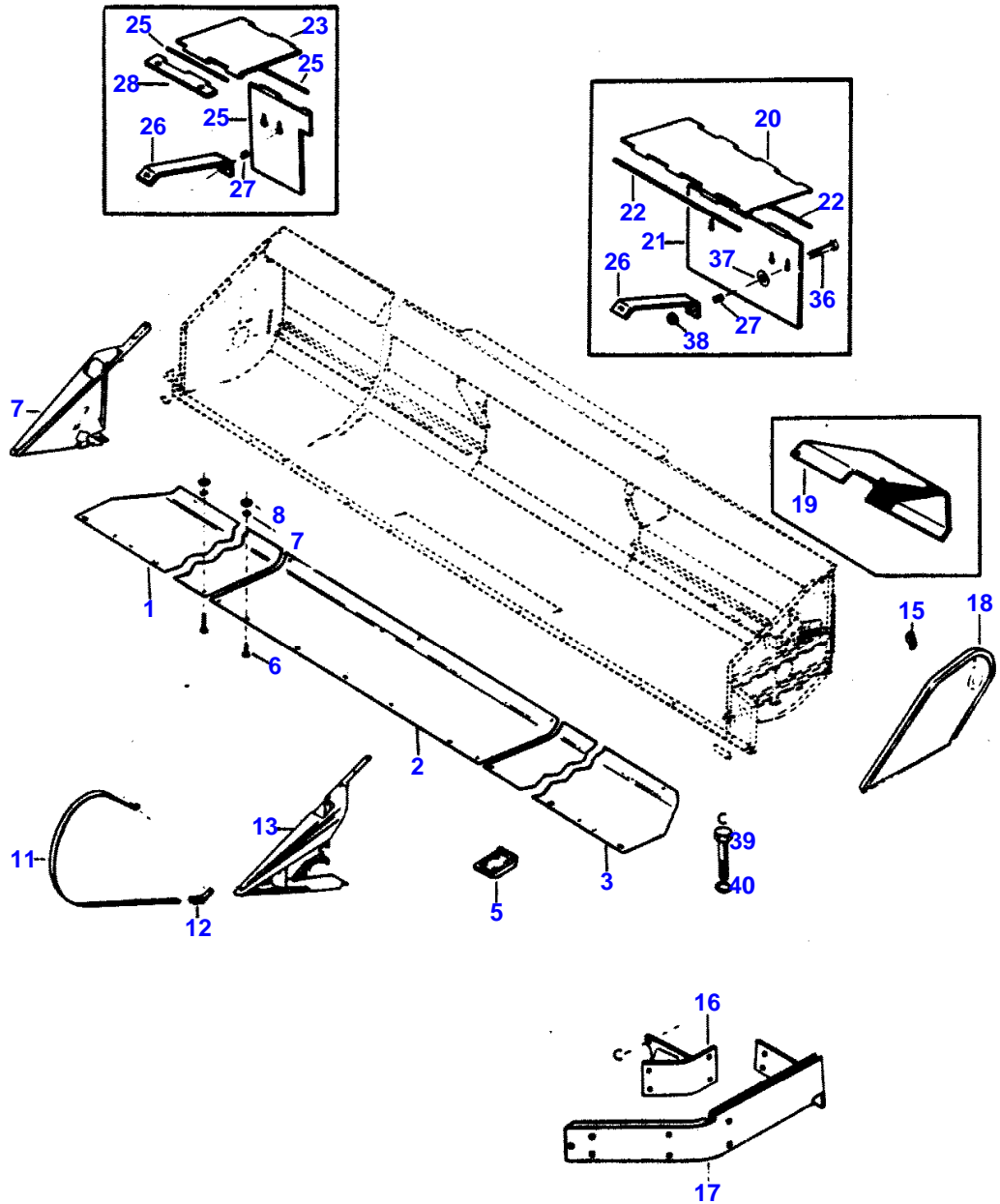
651 444 M93 (Issue 1) 1/83

Item	Part Number	Qty	Description
			(13', 15', 16', 18', 20')
			*****
1	245965M91	1	Table Assembly (13')
	264454M93	1	Table Assembly (15')
	264456M93	1	Table Assembly (16')
	264458M93	1	Table Assembly (18')
	264459M93	1	Table Assembly (20')
2	262013M92	1	Cam Assembly, Left
3	261516M91	1	Hanger Assembly, Left
4	261517M91	1	Hanger Assembly, Right
5	262012M92	1	Cam Assembly, Right
6	363307X1	2	Pin (3/16 x 1-1/8" Groove)
7	261641M1	1	Spring, Left
8	261640M1	1	Spring, Right
9	369141X1	1	Strap (2-Hole)
10	369142X1	1	Strap (2 Hole)
11	264022M91	1	Shield Assembly
14	281984M91	1	Plate Assembly, Filler (Left)
15	281983M91	1	Plate Assembly, Filler (Right)
16	282020M1	2	Strap, Cut-Off
17	272131M92	1	Filler Plate (Left) (4-3/16")
18	272137M92	1	Filler Plate (Right) (4-3/16")
19	272141M1	2	Strap (12-3/16" Long - 5 Holes)
20	272142M1	2	Plate (10" Long - 4 Holes) (W/Filler Plates)
25	260707M1	1	Angle, Table Front (13')
	260802M2	1	Angle, Table Front (15')
	260803M2	1	Angle, Table Front (16')
	260861M2	1	Angle, Table Front (18')
	260862M3	1	Angle, Table Front (20')
31	261573M1	1	Angle, Left (49-7/16") (13')
	264057M1	1	Angle, Left (61-7/16") (15')
	261534M1	1	Angle, Left (67-7/16") (16')
	261674M1	1	Angle, Left (79-7/16") (18')
	261520M1	1	Angle, Left (91-7/16") (20')
32	261572M1	1	Angle, Right (49-7/16") (13')
	264059M1	1	Angle, Right (61-7/16") (15')
	261535M1	1	Angle, Right (67-7/16") (16')
	261673M1	1	Angle, Right (79-7/16") (18')
	261518M1	1	Angle, Right (91-7/16") (20')
33	261574M1	2	Strap, Support (41-7/16" Long) (4 Holes) (13')
	264058M1	2	Strap (53-7/16" Long) (15')
	261488M1	2	Strap, Support (59-7/16") (16')
	261675M1	2	Strap, Support (71-7/16") (18')
	261521M1	2	Strap (83-7/16") (20')
46	364352X1	AR	Bolt (5/16 x 3/4" NC, Carr.)
47	353677X1	AR	Bolt (5/16 x 3/4" NC, Hex.)
48	353678X1	AR	Bolt (5/16 x 7/8" NC, Hex.)
49	364954X1	AR	Bolt (5/16 x 7/8" NC, Carr.)
50	364533X1	AR	Bolt (5/16 x 1-1/4" NC, Carr.)
51	353755X1	AR	Washer (11/32 x 11/16 x 5/64" Flat)
52	353446X1	AR	Washer (5/16" Lock)
53	355565X1	AR	Nut (5/16" NC, Hex.)
54	49307X	AR	Washer (7/16 x 7/8 x 3/64" Sq. Hole)
55	360513X1	AR	Bolt (3/8 x 3/4" NC, Carr.)
56	353434X1	AR	Washer (3/8" Lock)
57	355566X1	AR	Nut (3/8" NC, Hex.)
59	363423X1	AR	Bolt (5/8 x 2" NC, Carr.)
60	353433X1	AR	Washer (5/8" Lock)
61	375099X1	AR	Nut (5/8" NC, Hex.)

TABLE BOTTOM PLATES, SHIELDS AND DIVIDERS

5

1696 601



1st Print

651 444 M93 (Issue 1) 1/83



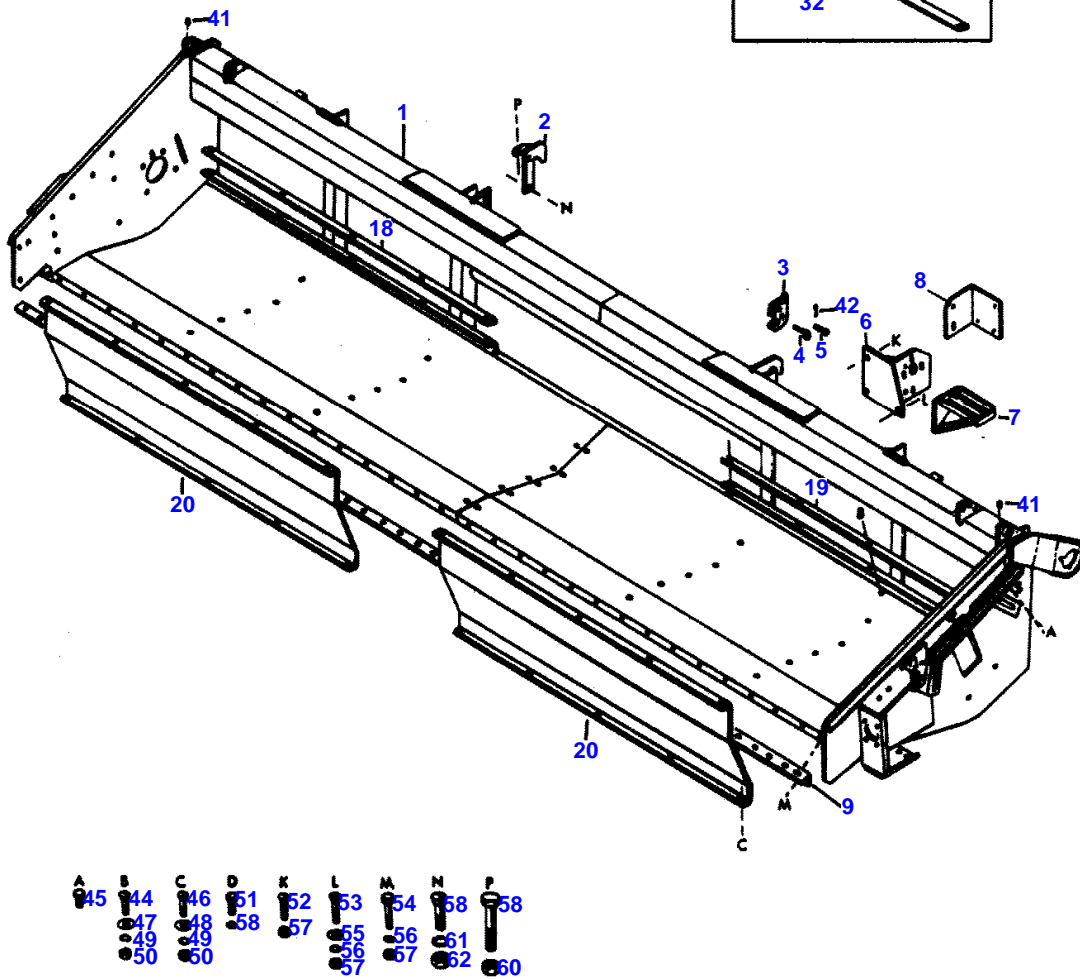
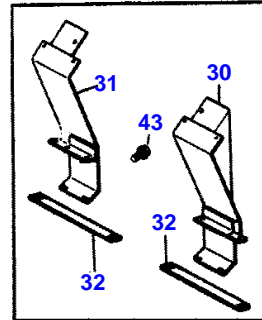
TABLE BOTTOM PLATES, SHIELDS AND DIVIDERS

Item	Part Number	Qty	Description
			(1859 SERIES) (RIGID CUTTER BAR) (13', 15', 16', 18', 20')
			*****
1	264040M91	1	Plate Assembly, Right (15')
	261564M91	1	Plate Assembly, Right (16')
	261668M91	1	Plate Assembly, Right (18')
	261600M91	1	Plate Assembly, Table Bottom, (Right) (20')
2	261562M91	1	Plate Assembly, Center (15', 16', 18', 20')
3	264038M91	1	Plate Assembly, Left (15')
	261565M91	1	Plate Assembly, Left (16')
	261669M91	1	Plate Assembly, Left (18')
	261601M91	1	Plate Assembly, Table Bottom, Left (20')
5	261568M1	7	Shoe (15', 16', 18', 20')
6	353691X1	AR	Bolt (3/8 x 1" NC, Hex.) (15', 16', 18', 20')
7	353434X1	AR	Washer (3/8" Lock) (15', 16', 18', 20')
8	353756X1	AR	Washer (13/32 x 13/16 x 1/16" Flat) (15' 16', 18', 20')
11	239746M1	2	Guard (15', 16', 18', 20')
12	236125M91	2	Bracket Assembly (15', 16', 18', 20')
13	260683M95	1	Divider Assembly, Left (15', 16', 18', 20')
14	260676M95	1	Divider Assembly, Right (15', 16', 18', 20')
15	261408M1	1	Bracket, Lift Arm (15', 16', 18', 20')
16	264446M91	1	Bracket Assembly (15', 16', 18', 20')
17	261726M91	1	Shield Assembly (15', 16', 18', 20')
18	261409M91	1	Shield Assembly (15', 16', 18', 20')
19	261627M1	1	Shield (18', 20')
20	245924M1	1	Shield, Left
21	245925M1	1	Shield, Left
22	360985X1	2	Rod (1/4 x 12-1/16")
23	261623M1	1	Shield, Right
24	261626M1	1	Shield, Right
25	365695X1	2	Pin (1/4 x 5-3/4" Headless)
26	261624M1	3	Support
27	261625M1	3	Spring
28	261622M1	1	Hinge, Shield
36	355156X1	AR	Bolt (5/16 x 1-1/2" NC, Sltd. Truss Hd.)
37	368371X1	AR	Washer (11/32 x 1-1/4 x 1/8")
38	375108X1	AR	Nut (5/16" NC, Half Hex.)
39	353725X1	AR	Bolt (1/2 x 1-3/4" NC, Hex.)
40	353439X1	AR	Washer (1/2" Lock)

6

TABLE

1696 602-1



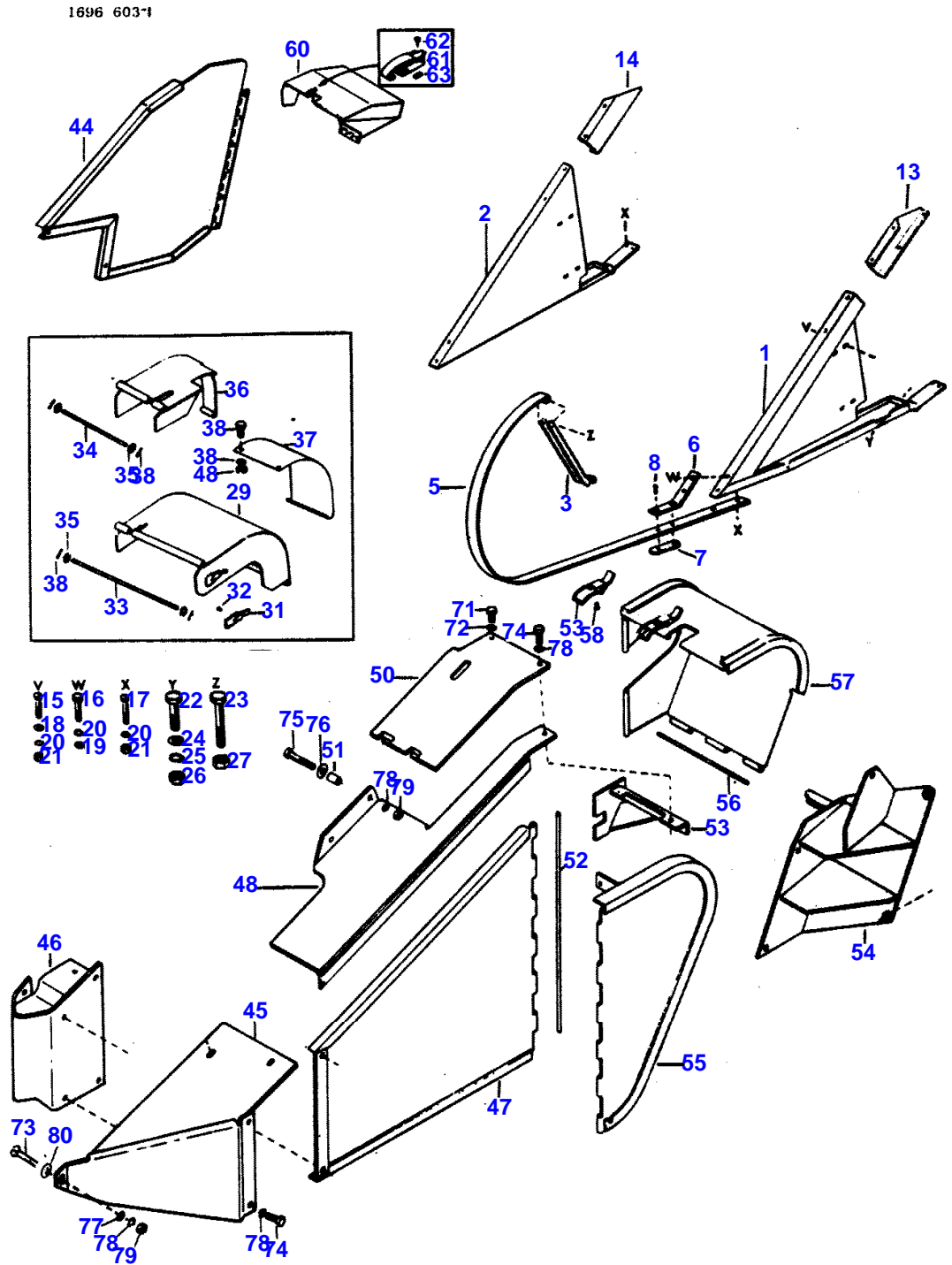
1st Print

651 444 N93 (Issue 1) 1/83

Item	Part Number	Qty	Description (22', 24', 22') *****
1	267130M93	1	Table Assembly, Rigid Cutter Bar (22')
	281612M93	1	Table Assembly, Rigid Cutter Bar (24')
	147404M91	1	Table Assembly, Floating Cutter Bar (22')
3	267019M92	2	Latch Assembly
4	267018M1	2	Pin (9/16 x 2-1/2" W/Ring)
5	367066X1	2	Pin (1-13/16 x 3/4" Clevis)
6	147455M91	1	Support Assembly
7	282531M92	1	Step Assembly
8	147492M1	1	Bracket, Step Support
9	267147M1	1	Angle, Table Front (22') (267130M93)
	282391M1	1	Angle, Table Front (24') (281612M93)
19	267146M1	2	Strap, Cut-Off (22') (267130M93) (147404M91)
	282379M1	2	Strap, Cut-Off (24')
20	267145M2	2	Windscreen (22') (267130M93) (147404M91)
	282362M1	2	Windscreen (24')
30	281984M91	1	Plate Assembly, Filler (Left)
31	281983M91	1	Plate Assembly, Filler (Right)
32	282020M1	2	Strap, Cut-Off
41	1900487M92	AR	Grease Ftg (1/4" - 28, Str)(Pkg/10)
42	354066X1	AR	Pin (5/32 x 1" Cotter)
43	365008X1	AR	Bolt (5/16 x 5/8" Hex., Washer Hd. Tapping)
44	360500X1	AR	Bolt (5/16 x 5/8" NC, Carr.)
45	365053X1	AR	Bolt (5/16 x 3/4" NC, Hex., Washer Hd. Tapping)
46	364352X1	AR	Bolt (5/16 x 3/4" NC, Carr.)
47	355802X1	AR	Washer (11/32" Sq. Hole x 11/16 x 1/16")
48	353755X1	AR	Washer (11/32 x 11/16 x 5/64" Flat)
49	353446X1	AR	Washer (5/16" Lock)
50	355565X1	AR	Nut (5/16" NC, Hex.)
51	353689X1	AR	Bolt (3/8 x 3/4" NC, Hex.)
52	364964X1	AR	Bolt (3/8 x 1" NC, Carr.)
53	363905X1	AR	Bolt (3/8 x 1-1/4" NC, Carr.)
54	353693X1	AR	Bolt (3/8 x 1-1/4" NC, Hex.)
55	353280X1	AR	Washer (7/16" Sq. Hole Flat)
56	353434X1	AR	Washer (3/8" Lock)
57	355566X1	AR	Nut (3/8" NC, Hex.)
58	363423X1	AR	Bolt (5/8 x 2" NC, Carr.)
59	370227X1	AR	Bolt (5/8 x 3-1/2" NC, Hex.)
60	375112X1	AR	Nut (5/8" NC, Half Hex.)
61	353433X1	AR	Washer (5/8" Lock)
62	375099X1	AR	Nut (5/8" NC, Hex.)

TABLE DIVIDERS AND SHIELDS

9



1st Print

651 444 M93 (Issue 1) 1/83

Item	Part Number	Qty	Description
(22 AND 24 FOOT RIGID AND FLOATING CUTTER BAR)			
*****			
1	281792M92	1	Divider Assembly, Left
2	281798M92	1	Divider Assembly, Right
3	283707M91	2	Channel Assembly
	267025M93	2	Guard Assembly
5		1	Guard (Order 267025M93)
6	267023M2	1	Angle, Divider
7	245950M1	1	Plate
8	2776X	4	Rivet (3/8 x 1-1/4")
13	267126M91	1	Bracket Assembly, Left
14	267127M91	1	Bracket Assembly, Right
15	365416X1	AR	Bolt (3/8 x 3/4" NC, Carr.)
16	353689X1	AR	Bolt (3/8 x 3/4" NC, Hex.)
17	364964X1	AR	Bolt (3/8 x 1" NC, Carr.)
18	365675X1	AR	Washer (7/16" Sq. x 7/8 x 7/64")
19	355619X1	AR	Washer (3/8 x 1 x 3/32" Flat)
20	353434X1	AR	Washer (3/8" Lock)
21	355566X1	AR	Nut (3/8" NC, Hex.)
22	353724X1	AR	Bolt (1/2 x 1-1/2" NC, Hex.)
23	354649X1	AR	Bolt (1/2 x 2-1/4" NC, Hex.)
24	353758X1	AR	Washer (17/32 x 1-1/16 x 7/64" Flat)
25	353439X1	AR	Washer (1/2" Lock)
26	375098X1	AR	Nut (1/2" NC, Hex.)
27	369066X1	AR	Nut (1/2" NC, Hex., Lock)
*****			
(DRIVE COUPLING SHIELDS)			
*****			
29	282170M92	1	Shield Assembly, Coupler (Left)
30	282174M92	1	Shield Assembly, Coupler (Right)
31	281537M1	1	Latch
32	519566M1	2	Rivet (3/16 x 9/32" Blind)
33	282181M1	1	Pin (1/2 x 12-7/16" Headless Drilled)
34	369866X1	1	Pin (1/2 x 7-15/16" Headless Drilled)
35	353758X1	4	Washer (17/32 x 1-1/16 x 7/64" Flat)
36	354059X1	4	Pin (1/8 x 1" Cotter)
37	282549M1	2	Cover
38	353675X1	4	Bolt (5/16 x 1/2" NC, Hex.)
39	353446X1	4	Washer (5/16" Lock)
40	355565X1	4	Nut (5/16" NC, Hex.)
*****			
(KNIFE DRIVE SHIELD)			
*****			
44	147419M91	1	Shield Assembly, Drive
45	267163M91	1	Deflector Assembly
46	147484M91	1	(A) Support Assembly
	267166M91	1	(B) Support Assembly
47	147493M91	1	(A) Door Assembly
	283733M91	1	(B) Door Assembly (Order 147493M91)
48	245926M91	1	Shield Assembly
50	148148M1	1	Cover, Hydrostatic Reel Drive
51	60089M1	1	Spacer (15/32 x 3/4 x 1-1/4")
52	GR001646	1	Rod, Hinge (1/4" Dia. x 22-5/8" Long)
53	283738M91	1	Angle Assembly
54	282762M92	1	Support Assembly
55	282758M91	1	Shield Assembly
56	365163X1	1	Rod (1/4" Dia. x 10-5/8")
57	147497M91	1	(A) Shield Assembly, Rear
	282768M91	1	(B) Shield Assembly (Rear)
58	281537M1	1	Latch
59	519566M1	2	Rivet (3/16 x 9/32" Blind)
60	147420M91	1	Shield Assembly (Rear)
61	1055895M1	1	Latch, Drive Cover
62	363448X1	2	Screw (#8 - 32 x 1/2" Rd. Hd.)
63	360309X1	2	Nut (#8 Flat Spring)
71	353666X1	AR	Bolt (1/4 x 5/8" NC, Hex.)
72	353441X1	AR	Washer (1/4" Lock)
73	365416X1	AR	Bolt (3/8 x 3/4" NC, Carr.)
74	353690X1	AR	Bolt (3/8 x 7/8" NC, Hex.)
75	353897X1	AR	Bolt (3/8 x 2" NC, Hex.)
76	355619X1	AR	Washer (3/8 x 1 x 3/32" Flat)

Item	Part Number	Qty	Description
77	353756X1	AR	Washer (13/32 x 13/16 x 1/16" Flat)
78	353434X1	AR	Washer (3/8" Lock)
79	355566X1	AR	Nut (3/8" NC, Hex.)
80	365675X1	AR	Washer (7/16" Sq. x 7/8 x 7/64")

\*\*\*\*\*

(A) - Used Late Production.  
(B) - Used Early Production.

**Buy Now**



Our support email:

[ebooklibonline@outlook.com](mailto:ebooklibonline@outlook.com)