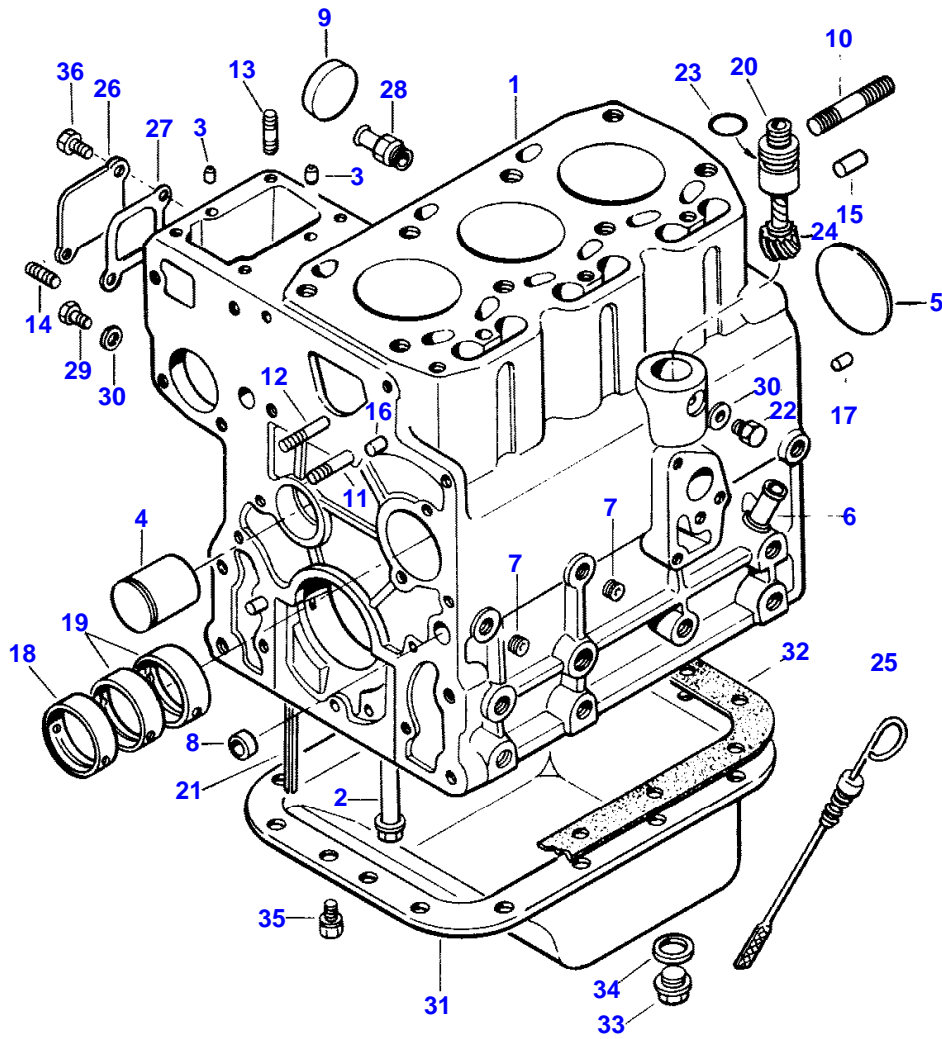


Page Title	Page Number
CYLINDER BLOCK	2
CAMSHAFT, TIMING GEAR	5
PISTONS, CONNECTING RODS, CRANKSHAFT AND FLYWHEEL	6
CYLINDER HEAD	9
LUBRICATING SYSTEM	10
GASKET KITS	13
RADIATOR AND WATER PUMP	14
AIR INTAKE AND EXHAUST	17
FUEL TANK	18
FUEL SYSTEM	21
THROTTLE LINKAGE	22
GOVERNOR	25
ELECTRIC WIRING	26
GENERATOR	29
STARTER	30
INSTRUMENT PANEL	33
INSTRUMENTS AND SWITCHES	34
LIGHTING	37
FRONT AXLE 2 WHEEL DRIVE	38
FRONT AXLE 4 WHEEL DRIVE	41
FRONT AXLE	42
FRONT AXLE 4 WHEEL DRIVE-DIFFERENTIAL	45
FRONT AXLE 4 WHEEL DRIVE - DIFFERENTIAL CARRIER	46
STEERING	49
POWER STEERING	49A
GEAR SHIFT AND CONTROLS	50
TRANSMISSION HOUSING	53
TRANSMISSION - MAIN AND DRIVE PINION SHAFT	54
TRANSMISSION - REVERSE IDLER AND COUNTERSHAFT	57
TRANSMISSION - FRONT DRIVE SHAFT	58
CLUTCH	61
DIFFERENTIAL HOUSING	62
GASKET KITS - POWER TRAIN	65
DIFFERENTIAL - WITH DIFFERENTIAL LOCK	66
P.T.O. AND HI-LOW CONTROL - POWER TAKE-OFF CONTROL	69
POWER TAKE OFF - SHAFT AND SHAFT EXTENSION	70
FRONT DRIVE CONTROL	73
REAR AXLE	74
CLUTCH AND BRAKE PEDALS	77
BRAKE	78
HYDRAULIC PUMP AND LINES	81
HYDRAULIC PUMP	82
HYDRAULIC LIFT COVER	85
HYDRAULIC LIFT LINKAGE	86
HYDRAULIC CONTROL VALVE AND LIFT HOUSING COVER	89
HYDRAULIC LIFT CYLINDER AND PISTON	90
HOOD AND GRILLE	93
MAIN FRAME	94
FENDERS AND STEP PLATES	97
P.T.O. GUARD AND DRAWBAR	98
LIFT LINKAGE - THREE POINT HITCH	101
SEAT	102
WHEELS - FRONT AND REAR	105
EMBLEMS AND LABELS	106
ACCESSORIES	109
REAR WORK LIGHT	110
FRONT MOUNTED P.T.O.	113
AUXILIARY HYDRAULICS - USED LATE PRODUCTION TRACTORS	114
AUXILIARY HYDRAULICS - EARLY PRODUCTION	117
SINGLE SPOOL VALVE	118
TWO SPOOL VALVE	121
PAINT AND OIL	122

2

CYLINDER BLOCK

2961 001



1st Print

651 464 M9

CYLINDER BLOCK

Item	Part Number	Qty	Description	Comments
	3439697M91	1	Engine	
	3439702M91	1	Block	
1	3437394M91	1	Block	(A) 2 - 9
1	3283989M93	1	Block	(B)
2	3605087M1	7	Bolt	(C)
	3605088M1	1	Bolt	(C)
	3284003M1	8	Bolt	(D)
3	3284004M1	2	Locator	
4	3284006M1	1	Shaft	
5	3284005M1	1	Plate	Diameter 55
6	3280498M1	1	Adaptor	
7	3283891M1	4	Plug	1/8" P.T.
8	3280120M1	2	Plug	Diameter 14
9	3280121M1	3	Plug	Diameter 40
10	3283997M1	2	Stud	M12 - 1.5 X 90 MM
11	3435018M1	1	Stud	M8 - 1.5 X 55 MM
12	3284847M1	1	Stud	M8 - 1.5 X 40 MM
13	3284846M1	4	Stud	M8 - 1.5 X 22 MM
14	391000X1	1	Stud	M8 - 1.25 X 20 MM
15	1440690X1	2	Pin	10 X 22 MM DOWEL
16	3283991M1	2	Locator	
17	3435645M1	2	Pin	(E)
	3283990M1	2	Locator	(F)
18	3284001M1	1	Bush	
19	3284002M1	2	Bush	
20	3283980M1	1	Guide	
21	3283981M1	2	Gasket	(G)
22	3283982M1	1	Screw	
23	3283983M1	1	Gasket	
24	3283984M1	1	Worm Gear	
25	3283985M1	1	Dipstick	
26	3283986M1	1	Plate	
27	3283987M1	1	Gasket	
28	3283988M1	1	Union	
29	3283978M1	1	Screw	
30	3283538M1	2	Gasket	
31	3437395M91	1	Pan	(H)
	3283490M92	1	Pan	(I)
32	3283491M1	1	Gasket	
33	3280104M1	2	Plug	(J)
34	3280105M1	2	Gasket	(J)
35	3283489M1	16	Screw	Repairs and replaces (1) 14407111, (1) 353446X1
36	3283979M1	2	Bolt	Repairs and replaces (1) 339560X1, (1) 353441X1 (A) USED 2 WD SERIAL NUMBER 12031 AND UP.-USED 4 WD SERIAL NUMBER 41763 AND UP. (B) USED PRIOR TO 2 WD SERIAL NUMBER 12301.-USED PRIOR TO 4 WD SERIAL NUMBER 41763. (C) USED 2 WD SERIAL NUMBER 14103 AND UP.-USED 4 WD SERIAL NUMBER 43749 AND UP. (D) USED PRIOR TO 2 WD SERIAL NUMBER 14103.-USED PRIOR TO 4 WD SERIAL NUMBER 43749. (E) USED 2 WD SERIAL NUMBER 10906 AND UP.-USED 4 WD SERIAL NUMBER 40824 AND UP. (F) USED PRIOR TO 2 WD SERIAL NUMBER 10906.-USED PRIOR TO 4 WD SERIAL NUMBER 40824. (G) QUANTITY WAS (4) PRIOR TO 2 WD TRACTOR SERIAL NUMBER 12662. QUANTITY WAS (4) PRIOR TO 4 WD TRACTOR SERIAL NUMBER 42436. (H) USED 2 WD SERIAL NUMBER 12742 AND UP.-USED 4 WD SERIAL NUMBER 42450 AND UP.

MASSEY FERGUSON

MF 1010 COMPACT TRACTOR - 651464EA

651464EA

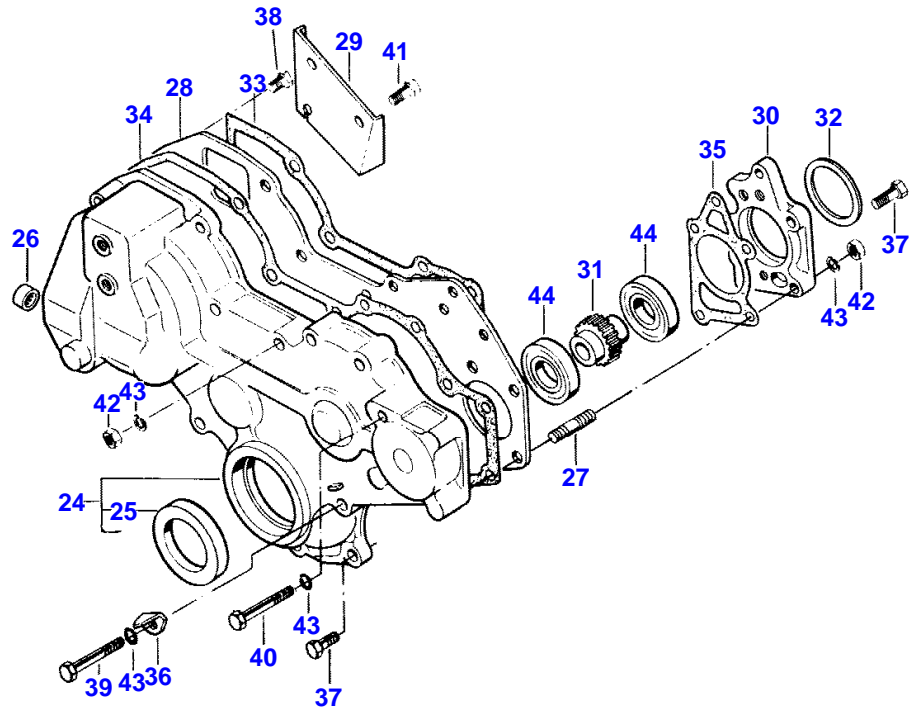
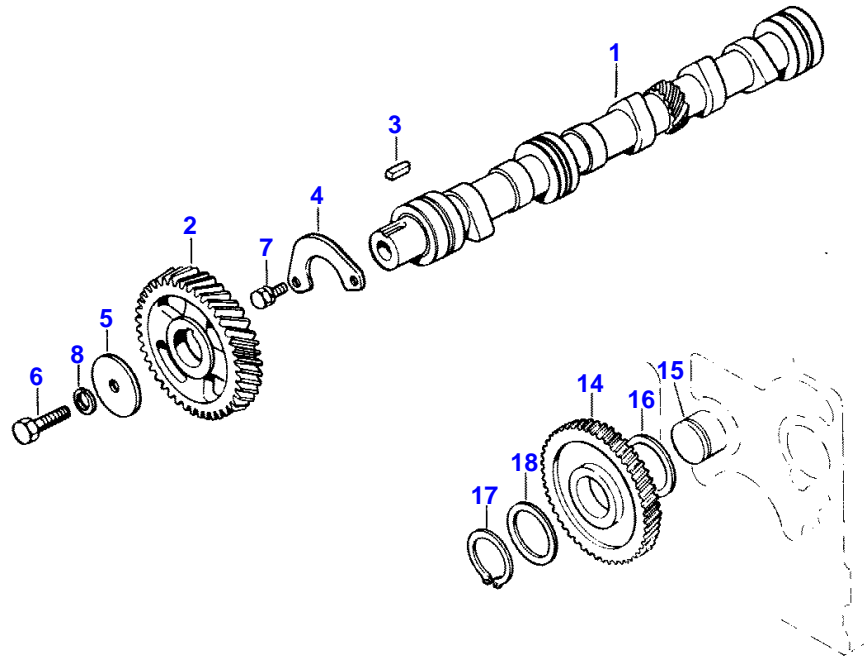
CYLINDER BLOCK

2

Item	Part Number	Qty	Description	Comments
				(I) USED PRIOR TO 2 WD SERIAL NUMBER 12742.-USED PRIOR TO 4 WD SERIAL NUMBER 42450.
				(J) QUANTITY WAS (1) PRIOR TO 2 WD TRACTOR SERIAL NUMBER 12742. QUANTITY WAS (1) PRIOR TO 4 WD TRACTOR SERIAL NUMBER 42450.

CAMSHAFT, TIMING GEAR

2961 002



1st Print

651 464 M91 (Issue 1) 5/82

CAMSHAFT, TIMING GEAR

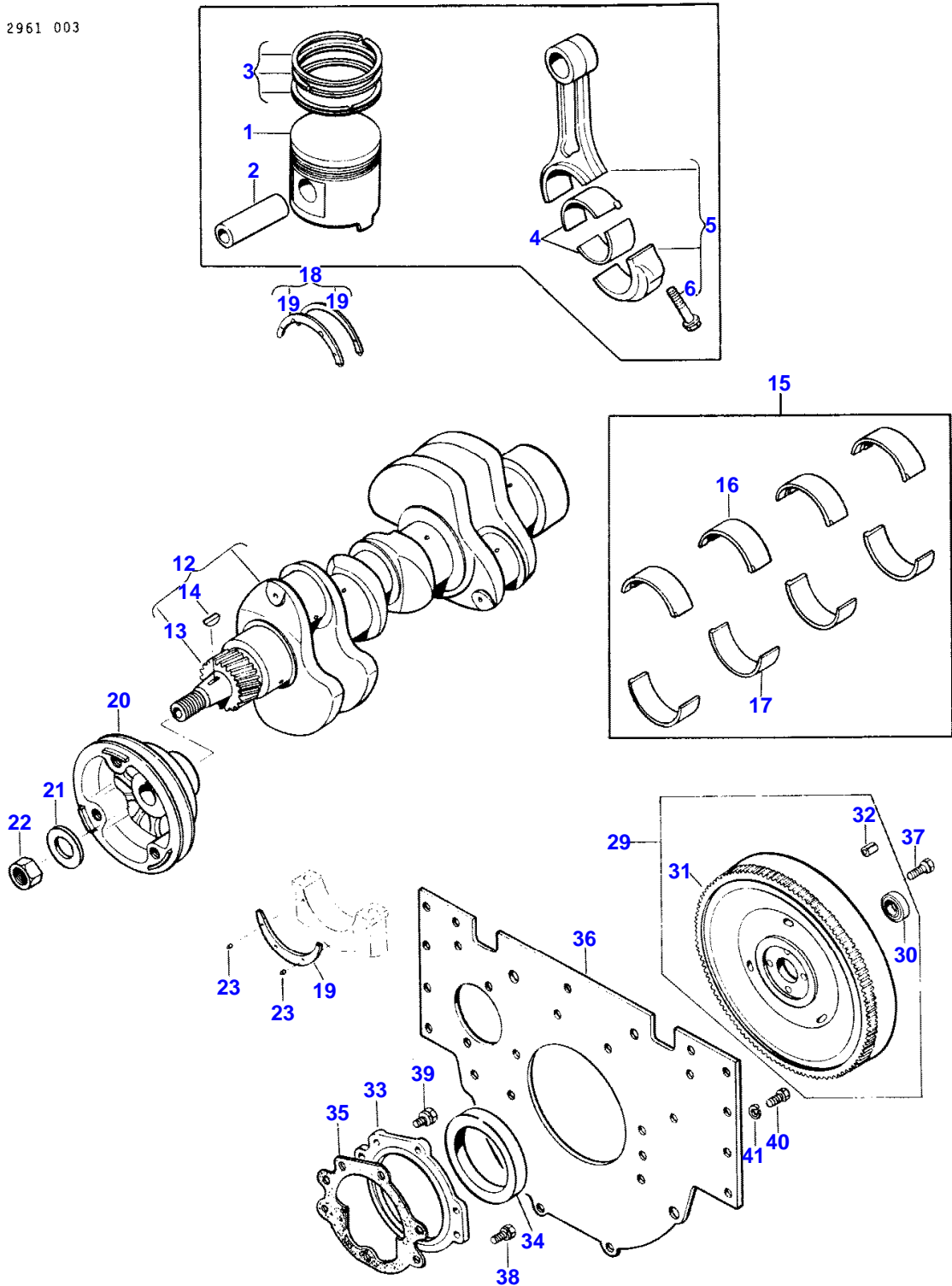
Item	Part Number	Qty	Description	Comments
1	3283523M1	1	Camshaft	
2	3283524M1	1	Pinion	
3	3283525M1	1	Key	
4	3283526M1	1	Plate	
5	3280148M1	1	Washer	
6	1442558X1	1	Bolt	
7	3283521M1	2	Bolt	Repairs and replaces (1) 390379X1, (1) 339374X1
8	339376X1	1	Lock Washer	M10
14	3283864M91	1	Pinion	
15		1	Gear	See Page - Reference Number 2
16	3283868M1	1	Spacer	
17	3283863M1	1	Clip	
18	3283865M1	AR	Thrust Washer	1.8 MM
	3283866M1	AR	Thrust Washer	2.0 MM
	3283867M1	AR	Thrust Washer	2.3 MM
24	3283882M91	1	Cover	
25	3283885M1	1	Gasket	
26	3283886M1	2	Bush	
27	3283884M1	2	Stud	M8 - 1.5 X 30 MM
28	3283877M1	1	Plate	
29	3283883M1	1	Plate	
30	3283878M1	1	Housing	
31	3283879M1	1	Pinion	
32	3283880M1	AR	Thrust Washer	0.3 MM
	3283881M1	AR	Thrust Washer	0.5 MM
	3284638M1	AR	Thrust Washer	0.1 MM
33	3283873M1	1	Gasket	
34	3283874M1	1	Gasket	
35	3283875M1	1	Gasket	
36	3283876M1	1	Thruster	
37	3283872M1	5	Bolt	
38	3283521M1	6	Bolt	Repairs and replaces (1) 390379X1, (1) 353446X1
39	339168X1	3	Bolt Metric	(A)
	339291X1	1	Bolt Metric	(B)
40	339368X1	1	Bolt Metric	
41	3283871M1	2	Bolt	Repairs and replaces (1) 339123X1, (1) 353446X1
42	1440203X1	3	Nut Metric	
43	353446X1	8	Lock Washer	5/16"
44	339064X1	2	Bearing Ball	(A)

QUANTITY OF 4 USED PRIOR 2 WD TRACTOR SERIAL NUMBE R 00613.  
 QUANTITY OF 4 USED PRIOR 4 WD TRACTOR SE  
 (B)  
 USED 2 WD SERIAL NO. 00613 AND UP.-USED 4 WD SERIA L NO. 40607 AND UP.

6

PISTONS, CONNECTING RODS, CRANKSHAFT AND FLYWHEEL

2961 003



1st Print

651 464 M91 (Issue 1) 5/82

PISTONS, CONNECTING RODS, CRANKSHAFT AND FLYWHEEL

Item	Part Number	Qty	Description	Comments
1	3283494M1	3	Piston	
	3284632M1	3	Piston	+ .50 MM
2	3283498M1	3	Clevis Pin	
3	3284984M91	3	Kit, Ring	
	3284985M91	3	Kit, Ring	.05 O/S
4	3283499M1	6	Bearing	
	3284635M1	6	Bearing	-.25 MM
	3284636M1	6	Bearing	-.50 MM
5	3283500M91	3	Conrod	
6	3283503M1	6	Bolt	
12	3283509M91	1	Crankshaft	
13	3283512M1	1	Pinion	
14	3280001M1	2	Key	
15	3284626M91	1	Kit, Bearing	
16		4		Not serviced, order 3284626M91
17		4	Main Bearing	Not serviced, order 3284626M91
15	3284627M91	1	Kit, Bearing	
16		4	Main Bearing	-.25 MM
				Not serviced, order 3284627M91
17		4	Main Bearing	-.25 MM
				Not serviced, order 3284627M91
15	3284628M91	1	Kit, Bearing	-.50 MM
16		4	Main Bearing	-.50 MM
				Not serviced, order 3284628M91
17		4	Main Bearing	-.50 MM
				Not serviced, order 3284628M91
18	3284629M91	1	Parts Pack	
19		2	Flange	Not serviced, order 3284629M91
18	3284630M91	1	Parts Pack	+.25 MM
19		2	Flange	+.25 MM
				Not serviced, order 3284630M91
18	3284631M91	1	Parts Pack	+.50 MM
19		2	Flange	+.50 MM
				Not serviced, order 3284631M91
20	3283505M1	1	Pulley	
21	3280140M1	1	Washer	23 X 46 X 5 MM
22	1441611X1	1	Nut Metric	M22 - 1.5
23	3280947M1	4	Pin	
29	3284010M91	1	Flywheel	
30	3435646M1	1	Bearing Assy	(A)
	3283513M1	1	Bearing Assy	(B)
31	3283516M1	1	Annular Gear	
32	3283514M1	3	Pin	
33	3284011M91	1	Housing	
34	3283518M1	1	Gasket	
35	3284012M1	1	Gasket	
36	3284013M1	1	Plate	
37	1441302X1	4	Bolt Metric	
38	3284009M1	1	Bolt	Repairs and replaces (1) 339337X1, (1) 390972X1, (1) 353446X1
39	3283468M1	4	Bolt	Repairs and replaces (1) 391931X1, (1) 390972X1, (1) 353446X1
40	1441134X1	6	Screw Metric	
41	339376X1	6	Lock Washer	M10
				(A)
				USED 2 WD SERIAL NUMBER 10906 AND UP.-USED 4 WD SERIAL NUMBER 40824 AND UP.
				(B)



MASSEY FERGUSON

MF 1010 COMPACT TRACTOR - 651464EA

651464EA

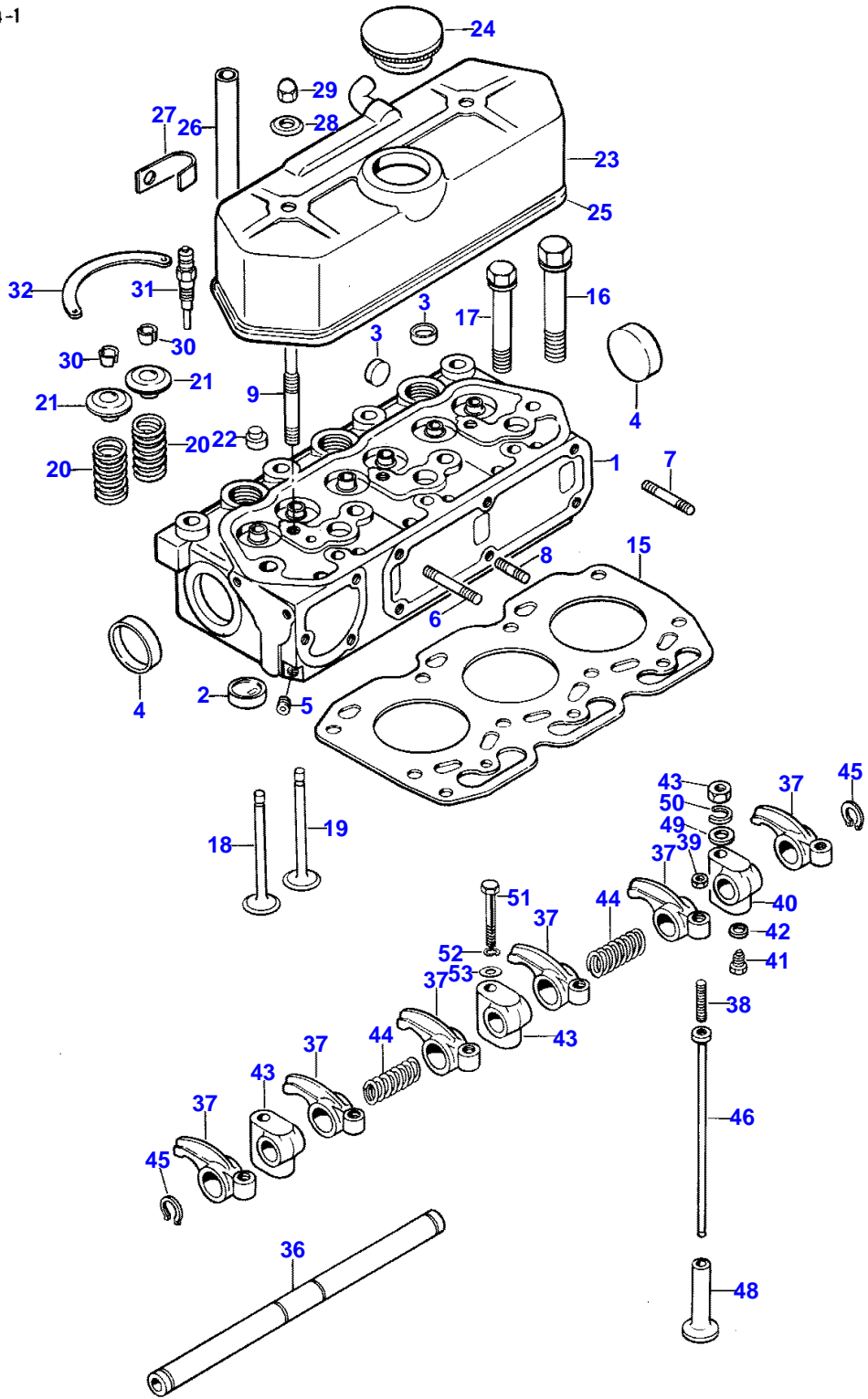
PISTONS, CONNECTING RODS, CRANKSHAFT AND FLYWHEEL

6

Item	Part Number	Qty	Description	Comments
				USED PRIOR TO 2 WD SERIAL NUMBER 10906.-USED PRIOR TO 4 WD SERIAL NUMBER 40824.

CYLINDER HEAD

2961 004-1



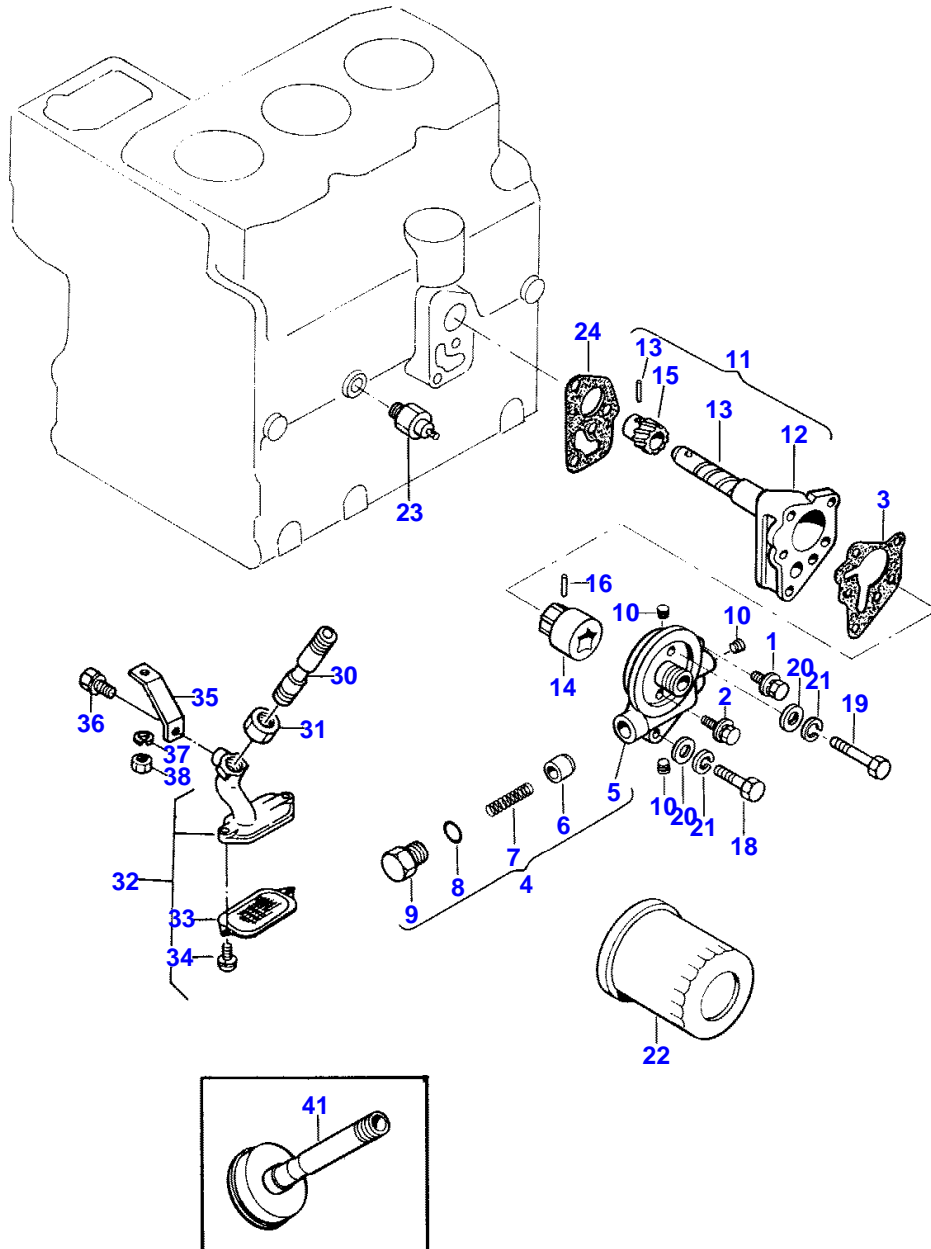
CYLINDER HEAD

Item	Part Number	Qty	Description	Comments
1	3283947M91	1	Cylinder Head	
2	3283951M1	3	Padding	
3	3280312M1	6	Plug	Diameter 20 MM
4	3280121M1	2	Plug	Diameter 40 MM
5	3283981M1	1	Gasket	1/8" P.T.
6	3283950M1	3	Stud	M8 - 1.5 X 65 MM
7	3283949M1	1	Stud	M8 - 1.5 X 60 MM
8	391000X1	2	Stud	(M8 - 1.25 X 20 MM)
9	3283952M1	2	Stud	M8 X 1.25 X M10 X 1.25 X 95 MM
	3280974M1	2	Plug	
15	3283937M1	1	Head Gasket	
	3437927M1	1	Gasket	(A)
16	3283938M1	8	Bolt	
17	3283939M1	3	Bolt	
18	3283945M1	3	Valve	
19	3283946M1	3	Valve	
20	3283934M1	6	Spring	
21	3283935M1	6	Retainer	
22	3283936M1	6	Gasket	
23	3283942M91	1	Valve Cover	
24	3283943M1	1	Plug	
25	3280071M1	1	Gasket	
26	3283940M1	1	Tube	
27	3283941M1	1	Tie	
28	3280072M1	2	Washer	
29	3005908X1	2	Nut	
30	3280023M1	12	Lock	
31	3284128M1	3	Glow Plug	
32	3284129M1	2	Plate	
	3283527M91	1	Rocker Shaft Ass	
36	3283529M91	1	Shaft	
	3283530M91	6	Arm	
37	3283536M1	1	Arm	
38	3283537M1	1	Screw	
39	1440203X1	1	Nut Metric	
	3283531M91	1	Support	
40	3283539M1	1	Support	
41	3283540M1	1	Bolt	
42	3283538M1	1	Gasket	
43	3283532M1	2	Support	(B)
44	3283533M1	2	Spring	
45	1441970X1	6	Circlip	(C) Thickness 19 MM X 1.2 MM
46	3283522M1	6	Tappet Rod	
47	1441409X1	2	Nut Metric	
48	3280145M1	6	Valve	
49	390734X1	2	Washer Metric	10.5 X 21 X 2 MM
50	339376X1	2	Lock Washer	M10
51	3437309M1	1	Bolt Metric	(D)
52	339376X1		Lock Washer	(D) M10
53	390734X1	1	Washer Metric	(D) 10.5 X 21 X 2 MM (A) SERVICE REPLACEMENT TO CORRECT HIGH SPEED ENGINE-M IS, SEE SERVICE BULLETIN TRACTORS #86-29. (B) QUANTITY OF (1) PRIOR TO 2 WD TRACTOR SERIAL NUMBE R 11585. QUANTITY OF (1) PRIOR TO 4 WD TRACTOR SE (C) QUANTITY OF (4) PRIOR TO 2 WD TRACTOR SERIAL NUMBE R 11585. QUANTITY OF (4) PRIOR TO 4 WD TRACTOR SERIAL NUMBE R 41426. (D) USED 2 WD SERIAL NO 11585 AND UP.-USED 4 WD SERIAL NO 41426 AND UP.

10

LUBRICATING SYSTEM

2961 005-1



87-18

651 464 091 (ISSUE 2) 3/87

LUBRICATING SYSTEM

Item	Part Number	Qty	Description	Comments
	3284123M91	1	Parts Pack	
1	3283924M1	1	Bolt	
2	3283925M1	1	Bolt	
3	3283926M1	1	Gasket	
4	3283927M91	1	Head	
5	3283894M1	1	Cover	
6	3283892M1	1	Pressure Valve	
7	3283893M1	1	Spring	
8	3280194M1	1	O Ring	
9	3280193M1	1	Bolt	
10	3283891M1	3	Plug	1/8" P.T.
11	3283928M91	1	Oil Pump	
12		1	Oil Pump	Not serviced, order 3283928M91
13		1	Shaft	Not serviced, order 3283928M91
14		1	Rotor	Not serviced, order 3283928M91
15	3283929M1	1	Pinion	
16	3280184M1	1	Pin	
17	3283930M1	1	Pin	
18	339291X1	2	Bolt Metric	
19	3284119M1	1	Bolt	
20	390972X1	3	Washer Metric	8.4 X 17 X 1.6 MM
21	353446X1	3	Lock Washer	5/16"
22	3283341M1	1	Oil Filter	
23	3284120M1	1	Switch,Indirect	
24	3284121M1	1	Gasket	
30	3437333M1	1	Pipe	(A)
31	3437334M1	1	Nut	(A)
32	3437421M91	1	Chamber	(A)
33	3437337M91	1	Screen	
34	3437404M1	2	Screw	
35	3437419M1	1	Bracket	(A)
36	3437602M1	1	Bolt Metric	(A)
37	339376X1	1	Lock Washer	(A)
				M10
38	1441409X1	1	Nut Metric	(A)
41	3284122M91	1	Strainer	(B)
				(A)
				USED LATE PRODUCTION TRACTORS
				(B)
				USED EARLY PRODUCTION TRACTORS.

**Buy Now**



Our support email:

[ebooklibonline@outlook.com](mailto:ebooklibonline@outlook.com)