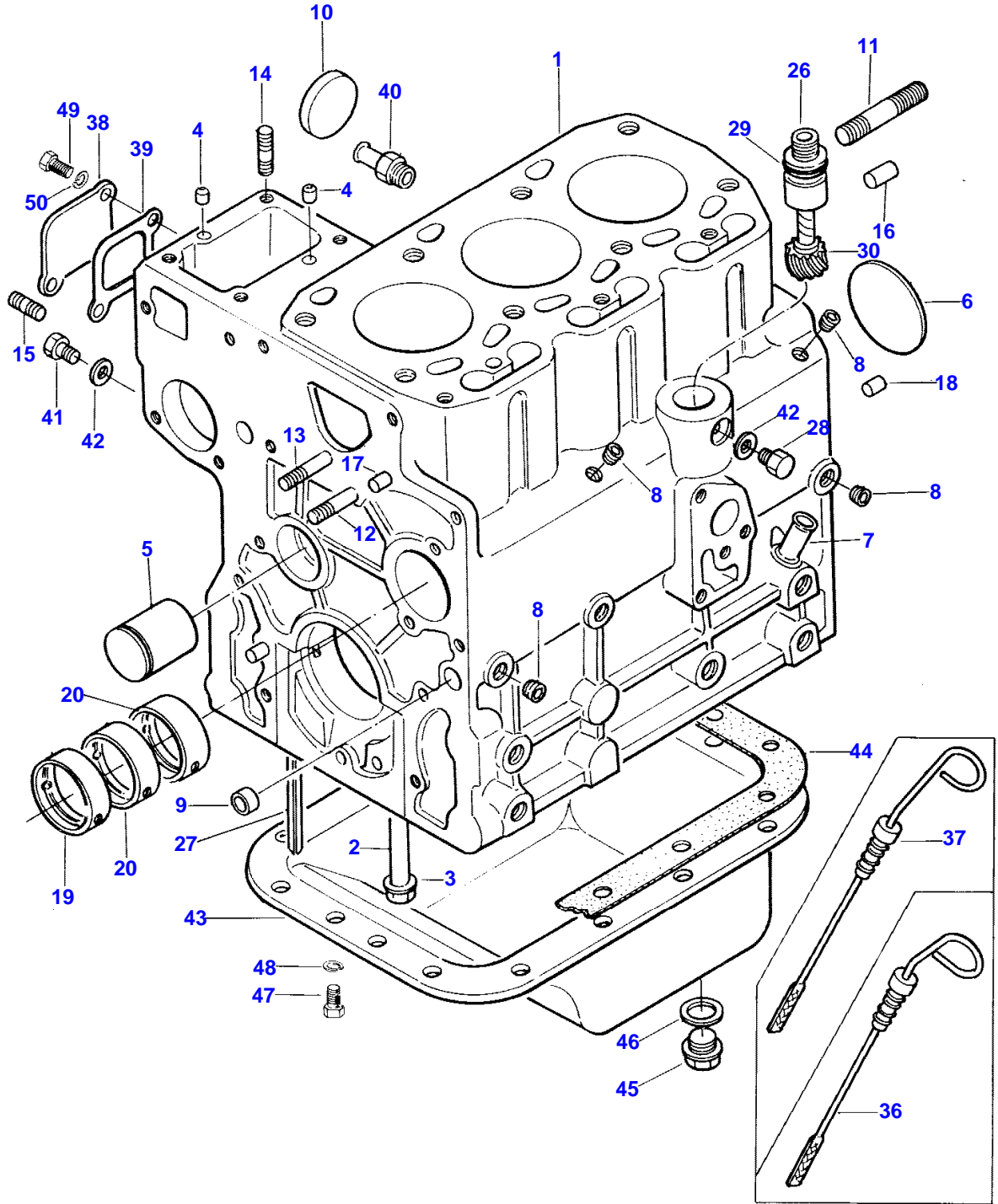


Page Title	Page Number
CYLINDER BLOCK AND OIL PAN	2
CAMSHAFT, TIMING GEAR	5
PISTONS, CONNECTING RODS, CRANKSHAFT AND FLYWHEEL	6
CYLINDER HEAD	9
LUBRICATING SYSTEM	10
GASKET KITS	13
RADIATOR	14
WATER PUMP AND OUTLET	17
AIR CLEANER AND MUFFLER	18
FUEL TANK	21
INJECTION SYSTEM	22
THROTTLE LINKAGE	25
GOVERNOR	26
ELECTRICAL WIRING	29
GENERATOR	30
STARTER	33
COWL AND INSTRUMENT PANEL	34
INSTRUMENTS AND SWITCHES	37
LIGHTS	38
FRONT AXLE AND HUB - TWO WHEEL DRIVE	41
FRONT AXLE AND HUB - FOUR WHEEL DRIVE	42
FRONT AXLE DRIVE - 4 WHEELS DRIVE	45
STEERING	46
POWER STEERING	47B
GEAR SHIFT AND CONTROLS	49
CLUTCH AND INPUT SHAFT	50
TRANSMISSION HOUSING	53
TRANSMISSION	54
CENTER HOUSING SHIFT CONTROLS	57
REAR AXLE	58
FRONT AND REAR DRIVE	61
DIFFERENTIAL	62
GASKET SET - POWER TRAIN	65
P.T.O. EXTENSION	66
BRAKES	69
CLUTCH AND BRAKE CONTROLS	70
HYDRAULIC PUMP AND LINES	73
HYDRAULIC PUMP	74
LIFT COVER, PISTONS AND ARMS	77
HYDRAULIC LIFT CONTROL	78
CONTROL VALVE AND COVER	81
LIFT LINKAGE	82
P.T.O. GUARD AND DRAWBAR	85
HOOD, GRILLE AND FRAME	86
FENDERS AND STEP PLATES	89
SEAT AND FLOORS	90
WHEELS	93
EMBLEMS AND LABELS	94
WEIGHT ACCESSORIES	97
FRONT MOUNTED P.T.O.	98
ACCESSORIES	101
ACCESSORIES	102
AUXILIARY HYDRAULICS - USED LATE PRODUCTION TRACTORS	105
AUXILIARY HYDRAULICS - USED EARLY PRODUCTION TRACTORS.	106
SINGLE SPOOL VALVE	109
TWO SPOOL VALVE	110
PAINT AND OIL	113

2

CYLINDER BLOCK AND OIL PAN

2962 001-1



87-19

651 506 M91 (ISSUE 2) 3/87

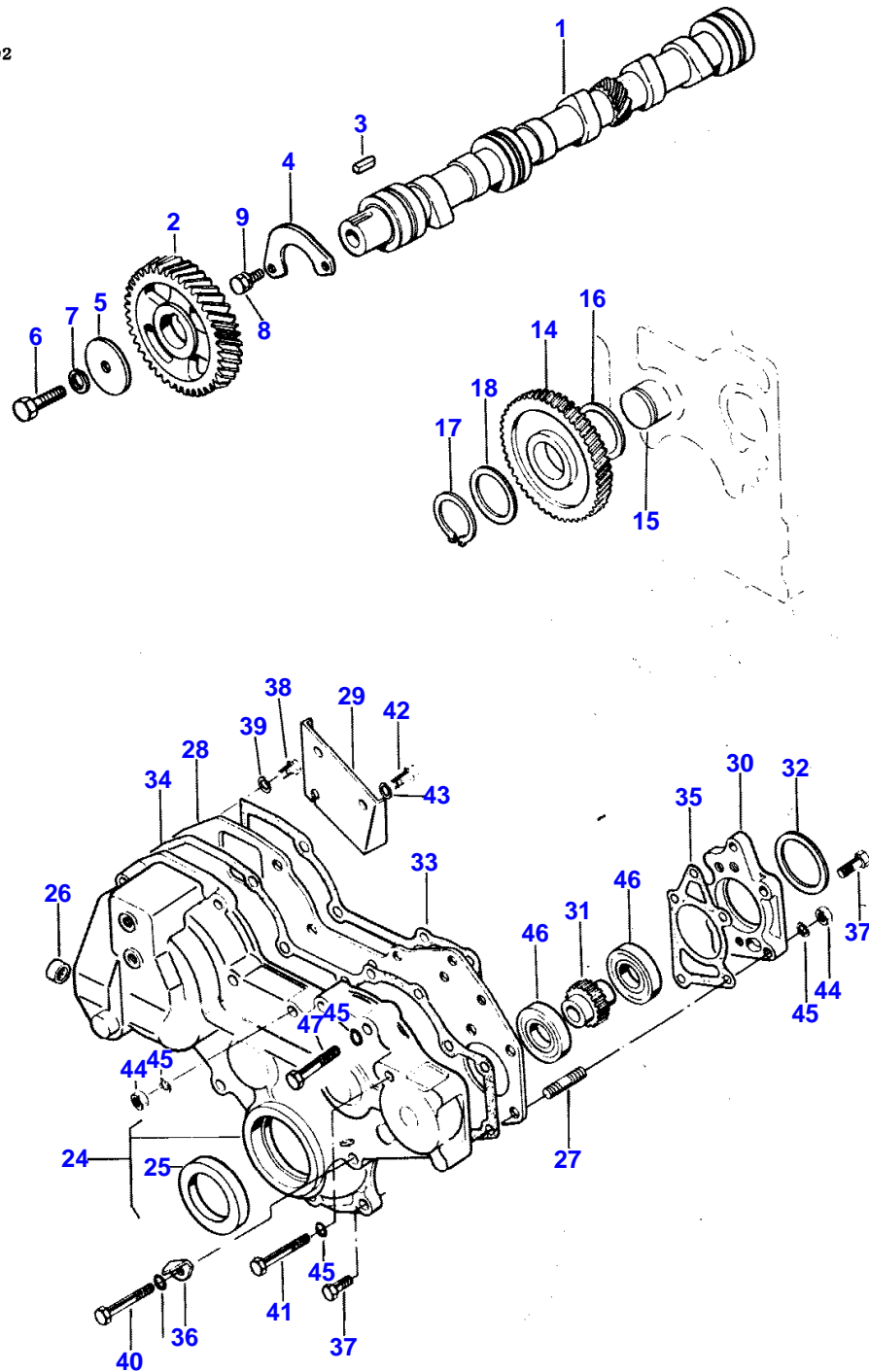
CYLINDER BLOCK AND OIL PAN

Item	Part Number	Qty	Description	Comments
	3439696M91	1	Engine	
	3439695M91	1	Block	
1	3435135M91	1	Cylinder Block	
2	3605087M1	7	Bolt	(A)
	3605088M1	1	Bolt	(A)
	3284003M1	7	Bolt	(B)
	3437341M1	1	Bolt	(B)
3	3436695M1	1	Short Engine	
4	3284004M1	2	Locator	
5	3284006M1	1	Shaft	
6	3284005M1	1	Plate	Diameter 55 MM
7	3280498M1	1	Adaptor	
8	3283891M1	4	Plug	1/8" P.T.
9	3280120M1	2	Plug	Diameter 14 MM
10	3280121M1	3	Plug	Diameter 40 MM
11	3435137M1	2	Stud	
12	3435018M1	1	Stud	M8 - 1.5 X 55 MM
13	3284847M1	1	Stud	M8 - 1.5 X 40 MM
14	3284846M1	4	Stud	M8 - 1.5 X 22 MM
15	3284845M1	1	Stud	
16	1440690X1	2	Pin	10 X 22 MM
17	3283991M1	2	Locator	
18	3435645M1	2	Pin	
19	3284001M1	1	Bush	
20	3284002M1	2	Bush	
26	3283980M1	1	Guide	
27	3283981M1	4	Gasket	
28	3283982M1	1	Screw	
29	3283983M1	1	Gasket	
30	3283984M1	1	Worm Gear	
36	3435134M1	1	Gauge	
37	3283985M1	1	Dipstick	
38	3283986M1	1	Plate	
39	3283987M1	1	Gasket	
40	3283988M1	1	Union	
41	3283978M1	1	Screw	
42	3283538M1	2	Gasket	
43	3435138M91	1	Pan	
44	3283491M1	1	Gasket	
45	3280104M1	1	Plug	
46	3280105M1	1	Gasket	
47	1440711X1	16	Bolt Metric	
48	353446X1	16	Lock Washer	
49	339560X1	2	Screw Metric	
50	353441X1	2	Lock Washer	1/4" LOCK (A) USED 2 WD SERIAL NO 02414 AND UP.-USED 4 WD SERIAL NO 41837 AND UP. (B) USED PRIOR TO 2 WD SERIAL NO 02414.-USED PRIOR TO 4 WD SERIAL NO 41837. (C) USED LATE PRODUCTION TRACTORS (D) USED EARLY PRODUCTION TRACTORS.

CAMSHAFT, TIMING GEAR

5

2962 002



1st Print

651 506 M91 (Issue 1) 1/84

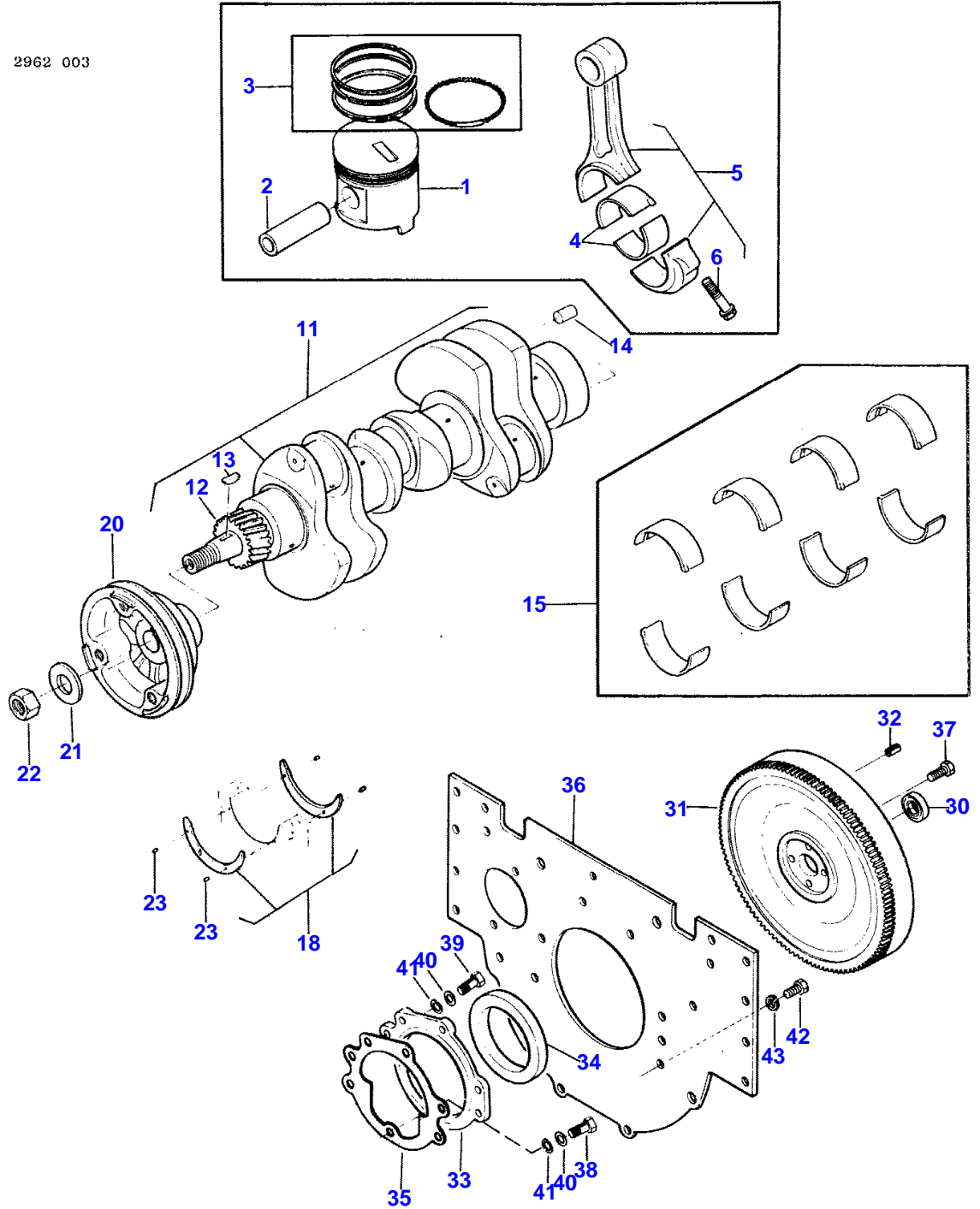
CAMSHAFT, TIMING GEAR

Item	Part Number	Qty	Description	Comments
1	3283523M1	1	Camshaft	
2	3283524M1	1	Pinion	
3	3283525M1	1	Key	
4	3283526M1	1	Plate	
5	3280148M1	1	Washer	
6	1442558X1	1	Bolt	
7	339376X1	1	Lock Washer	
8	390379X1	2	Bolt Metric	
9	353446X1	2	Lock Washer	5/16"
14	3283864M91	1	Pinion	
15	3284006M1	1	Shaft	
16	3283868M1	1	Spacer	
17	3283863M1	1	Clip	
18	3283865M1	AR	Thrust Washer	1.8 MM
	3283866M1	AR	Thrust Washer	2.0 MM
	3283867M1	AR	Thrust Washer	2.3 MM
24	3283882M91	1	Cover	
25	3283885M1	1	Gasket	
26	3283886M1	2	Bush	
27	3283884M1	2	Stud	M8 - 1.5 X 30 MM
28	3283877M1	1	Plate	
29	3283883M1	1	Plate	
30	3283878M1	1	Housing	
31	3283879M1	1	Pinion	
32	3283880M1	AR	Thrust Washer	0.3 MM
	3283881M1	AR	Thrust Washer	0.5 MM
	3284638M1	AR	Thrust Washer	0.1 MM
33	3283873M1	1	Gasket	
34	3283874M1	1	Gasket	
35	3283875M1	1	Gasket	
36	3283876M1	1	Thruster	
37	3283872M1	5	Bolt	
38	390379X1	6	Bolt Metric	
39	353446X1	6	Lock Washer	5/16"
40	339168X1	4	Bolt Metric	
41	339368X1	1	Bolt Metric	
42	339123X1	2	Screw Metric	
43	353446X1	2	Lock Washer	5/16"
44	1440203X1	3	Nut Metric	
45	353446X1	8	Lock Washer	5/16"
46	339064X1	2	Bearing Ball	
47	339291X1	1	Bolt Metric	

6

PISTONS, CONNECTING RODS, CRANKSHAFT AND FLYWHEEL

2962 003



1st Print

651 506 M91 (Issue 1) 1/84

MASSEY FERGUSON**MF 1020 COMPACT TRACTOR - 651506EA**

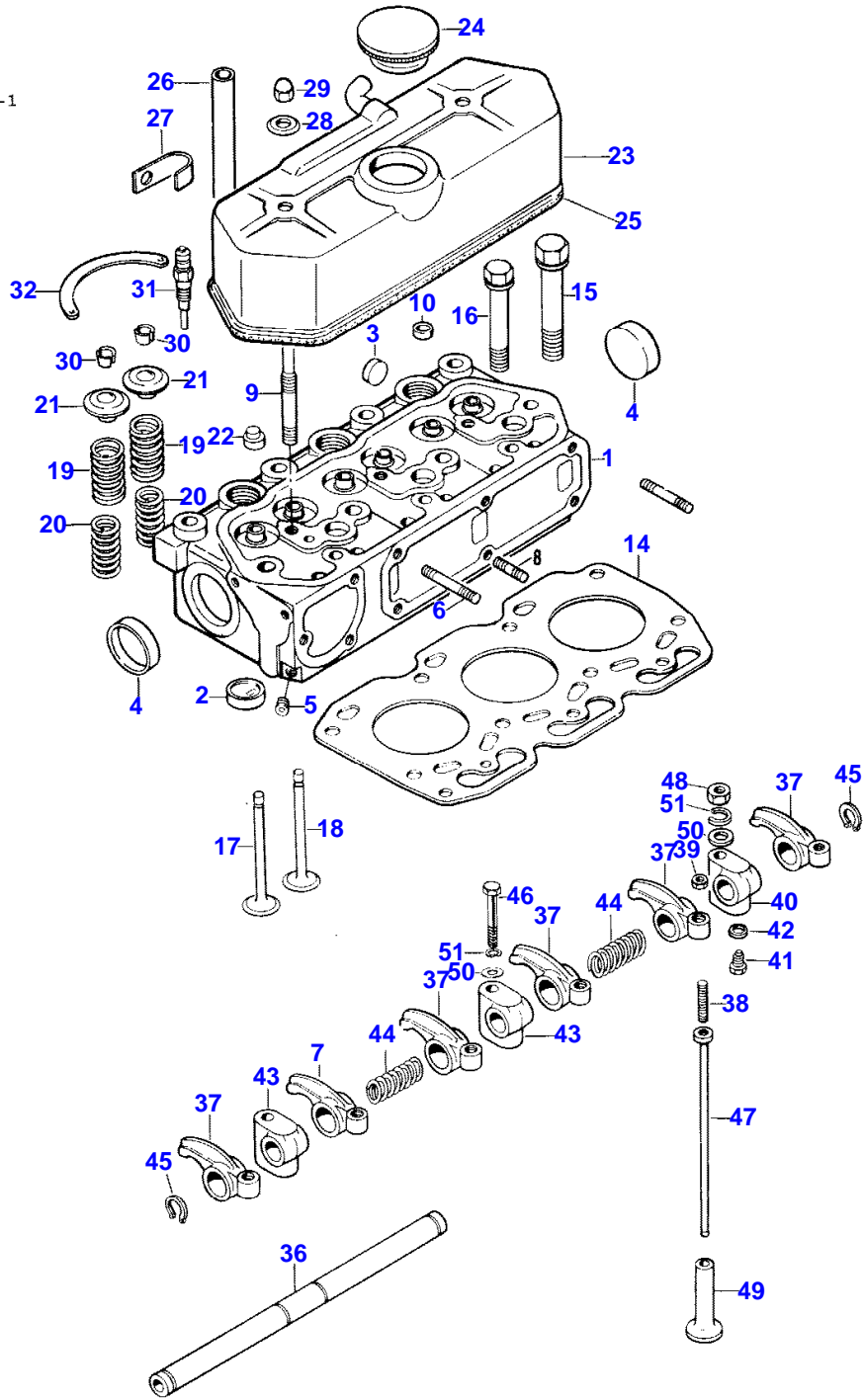
651506EA

PISTONS, CONNECTING RODS, CRANKSHAFT AND FLYWHEEL**6**

Item	Part Number	Qty	Description	Comments
1	3435140M1	3	Piston	
	3435604M1	3	Piston	+.50 MM
2	3435145M1	3	Clevis Pin	
3	3435605M91	3	Kit, Ring	
	3435606M91	3	Kit, Ring	+.50 MM
4	3283499M1	6	Bearing	
	3284635M1	6	Bearing	-.25 MM
	3284636M1	6	Bearing	-.50 MM
5	3283500M91	3	Conrod	
6	3283503M1	6	Bolt	
11	3435146M91	1	Crankshaft	
12	3283512M1	1	Pinion	
13	3280001M1	2	Key	
14	3280931M1		Pin	
15	3284626M91	1	Kit, Bearing	
	3284627M91	1	Kit, Bearing	-.25 MM
	3284628M91	1	Kit, Bearing	-.50 MM
18	3284629M91	1	Parts Pack	
	3284630M91	1	Parts Pack	+.25 MM
	3284631M91	1	Parts Pack	+.50 MM
20	3283505M1	1	Pulley	
21	3280140M1	1	Washer	23 X 46 X 5 MM
22	1441611X1	1	Nut Metric	
23	3280947M1	4	Pin	
	3435148M91	1	Flywheel	
30	3435646M1	1	Bearing Assy	
31	3283516M1	1	Annular Gear	
32	3283514M1	3	Pin	
33	3284011M91	1	Housing	
34	3283518M1	1	Gasket	
35	3284012M1	1	Gasket	
36	3284013M1	1	Plate	
37	1441302X1	4	Bolt Metric	
38	339337X1	1	Screw Metric	
39	391931X1	4	Bolt Metric	8.4 X 17 X 1.6 MM
40	390972X1	5	Washer Metric	5/16"
41	353446X1	5	Lock Washer	
42	1441134X1	6	Screw Metric	
43	339376X1	6	Lock Washer	M10

CYLINDER HEAD

2962 004-1



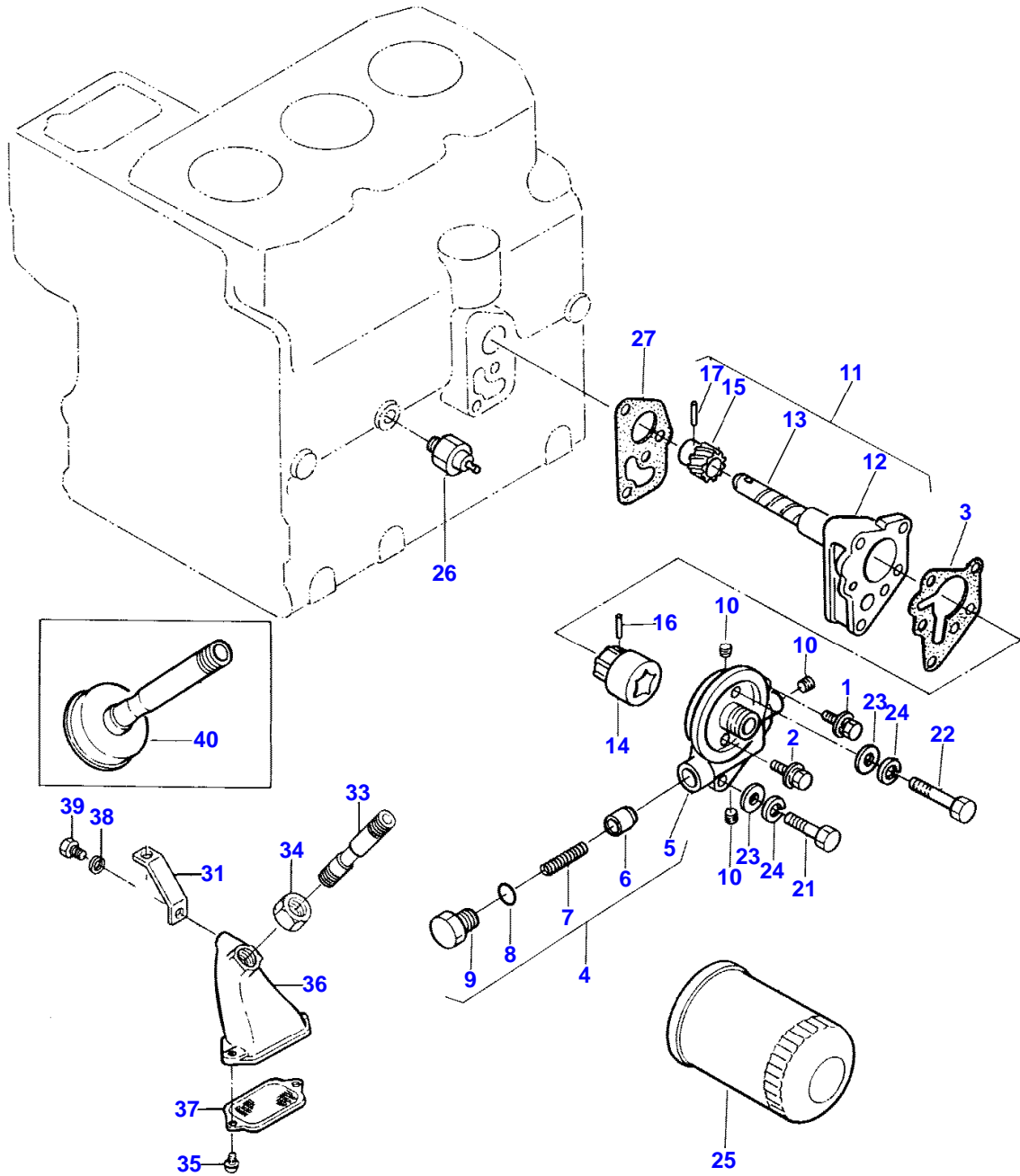
CYLINDER HEAD

Item	Part Number	Qty	Description	Comments
1	3435114M91	1	Cylinder Head	
2	3435117M1	3	Insert	
3	3280312M1	6	Plug	Diameter 20 MM
4	3280121M1	2	Plug	Diameter 40 MM
5	3283891M1	1	Plug	1/8"
6	3283950M1	4	Stud	M8 - 1.5 X 65 MM
8	3435118M1	2	Stud	
9	3283952M1	2	Stud	M8 X 1.25 X M10 X 1.25 X 95 MM
10	3280974M1	2	Plug	
14	3435113M1	1	Gasket	
15	3283938M1	8	Bolt	
16	3283939M1	3	Bolt	
17	3435109M1	3	Valve	
18	3435110M1	3	Valve	
19	3435111M1	6	Spring	
20	3435112M1	6	Spring	
21	3283935M1	6	Retainer	
22	3283936M1	6	Gasket	
23	3435119M91	1	Valve Cover	
24	3283943M1	1	Plug	
25	3280071M1	1	Gasket	
26	3283940M1	1	Tube	
27	3283941M1	1	Tie	
28	3280072M1	2	Washer	
29	3005908X1	2	Nut	
30	3280023M1	12	Lock	
31	3284128M1	3	Glow Plug	
32	3284129M1	2	Plate	
	3283527M91	1	Rocker Shaft Ass	
36	3283529M91	1	Shaft	
	3283530M91	6	Arm	
37	3283536M1	1	Arm	
38	3283537M1	1	Screw	
39	1440203X1	1	Nut Metric	
	3283531M91	1	Support	
40	3283539M1	1	Support	
41	3283540M1	1	Bolt	
42	3283538M1	1	Gasket	
43	3283532M1	2	Support	
44	3283533M1	2	Spring	
45	1441970X1	6	Circlip	19 MM X 1.2 MM
46	3437309M1	1	Bolt Metric	
47	3435150M1	6	Stem	
48	1441409X1	2	Nut Metric	
49	3280145M1	6	Valve	
50	390734X1	2	Washer Metric	10.5 X 21 X 2 MM
51	339376X1	2	Lock Washer	M10 (A) USED 2 WD TRACTOR SERIAL NUMBER 01666 AND UP. USED 4 WD TRACTOR SERIAL NUMBER 41223 AND UP. (B) QUANTITY WAS (1) PRIOR TO 2 WD TRACTOR SERIAL NO. 00624. QUANTITY WAS (1) PRIOR TO 4WD TRACTOR 40474 (C) QUANTITY WAS (4) PRIOR TO 2 WD TRACTOR SERIAL NO. 00624. QUANTITY WAS (4) PRIOR TO 4WD NO. 40474

10

LUBRICATING SYSTEM

2962 005-1



87-19

651 506 M91 (ISSUE 2) 3/87

LUBRICATING SYSTEM

Item	Part Number	Qty	Description	Comments
	3284123M91	1	Parts Pack	
1	3283924M1	1	Bolt	
2	3283925M1	1	Bolt	
3	3283926M1	1	Gasket	0.1 MM
4	3283927M91	1	Head	
5	3283894M1	1	Cover	
6	3283892M1	1	Pressure Valve	
7	3283893M1	1	Spring	
8	3280194M1	1	O Ring	
9	3280193M1	1	Bolt	
10	3283891M1	3	Plug	1/8"
11	3283928M91	1	Oil Pump	
12		1		Not serviced, order 3283928M91
13		1		Not serviced, order 3283928M91
14		1		Not serviced, order 3283928M91
15	3283929M1	1	Pinion	
16	3280184M1	1	Pin	
17	3283930M1	1	Pin	
21	339291X1	2	Bolt Metric	
22	3284119M1	1	Bolt	
23	390972X1	3	Washer Metric	8.4 X 17 X 1.6 MM
24	353446X1	3	Lock Washer	5/16"
25	3435171M1	1	Oil Filter	
26	3284120M1	1	Switch,Indirect	
27	3284121M1	1	Gasket	
31	3437340M1	1	Bracket	(A)
33	3437333M1	1	Pipe	(A)
34	3437334M1	1	Nut	(A)
35	3437404M1	2	Screw	(A)
36	3437336M1	1	Chamber	(A)
37	3437337M91	1	Screen	(A)
38	339381X1	2	Lock Washer	(A)
				M5
39	3284035M1	2	Screw	(A)
40	3435172M91	1	Grille	(B)
				(A)

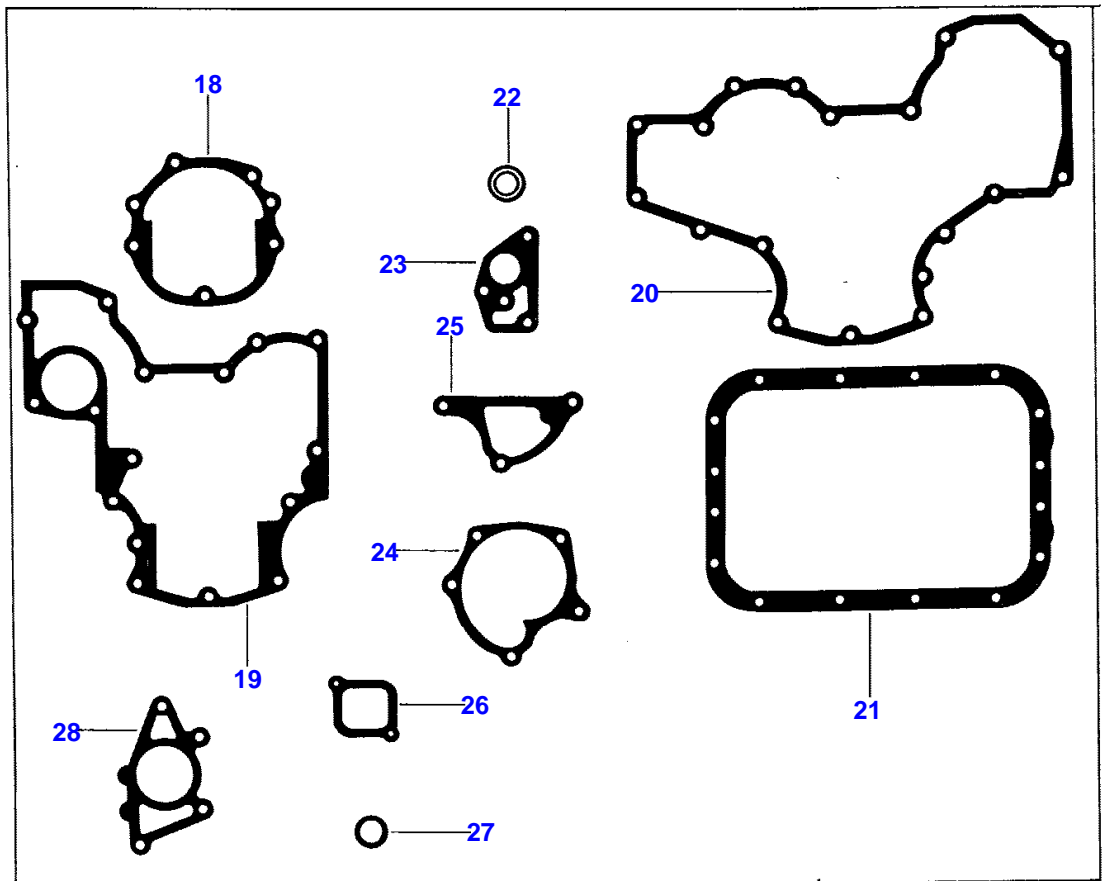
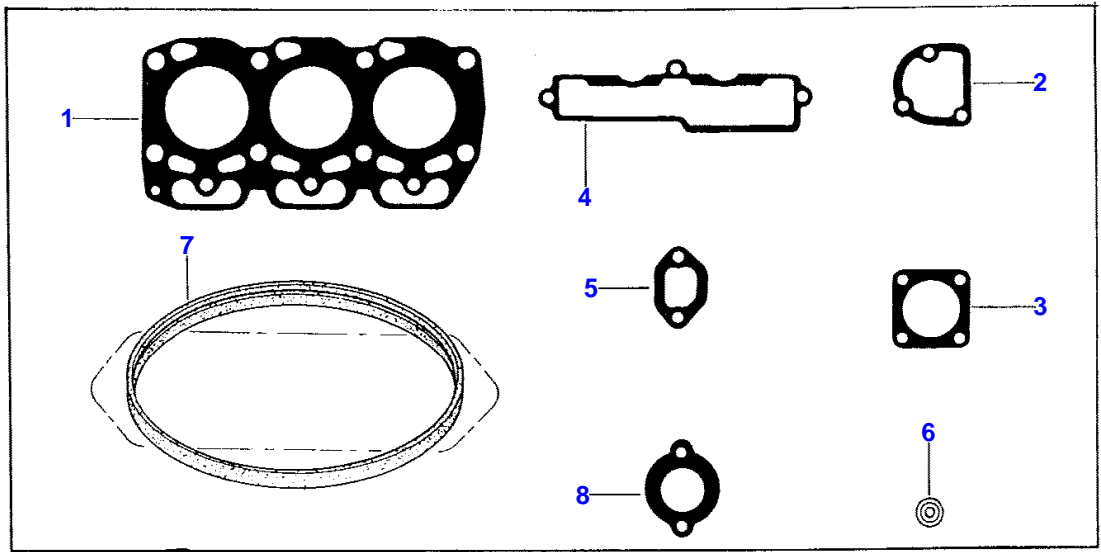
USED 2 WD TRACTOR SERIAL NUMBER 00954 AND UP. USED 4 WD TRACTOR SERIAL NUMBER 40714 AND UP.

(B)

USED PRIOR TO 2 WD SERIAL NO 00954.-USED PRIOR TO 4 WD SERIAL NO 40714.

GASKET KITS

2962 006



1st Print

651 506 M91 (Issue 1) 1/84

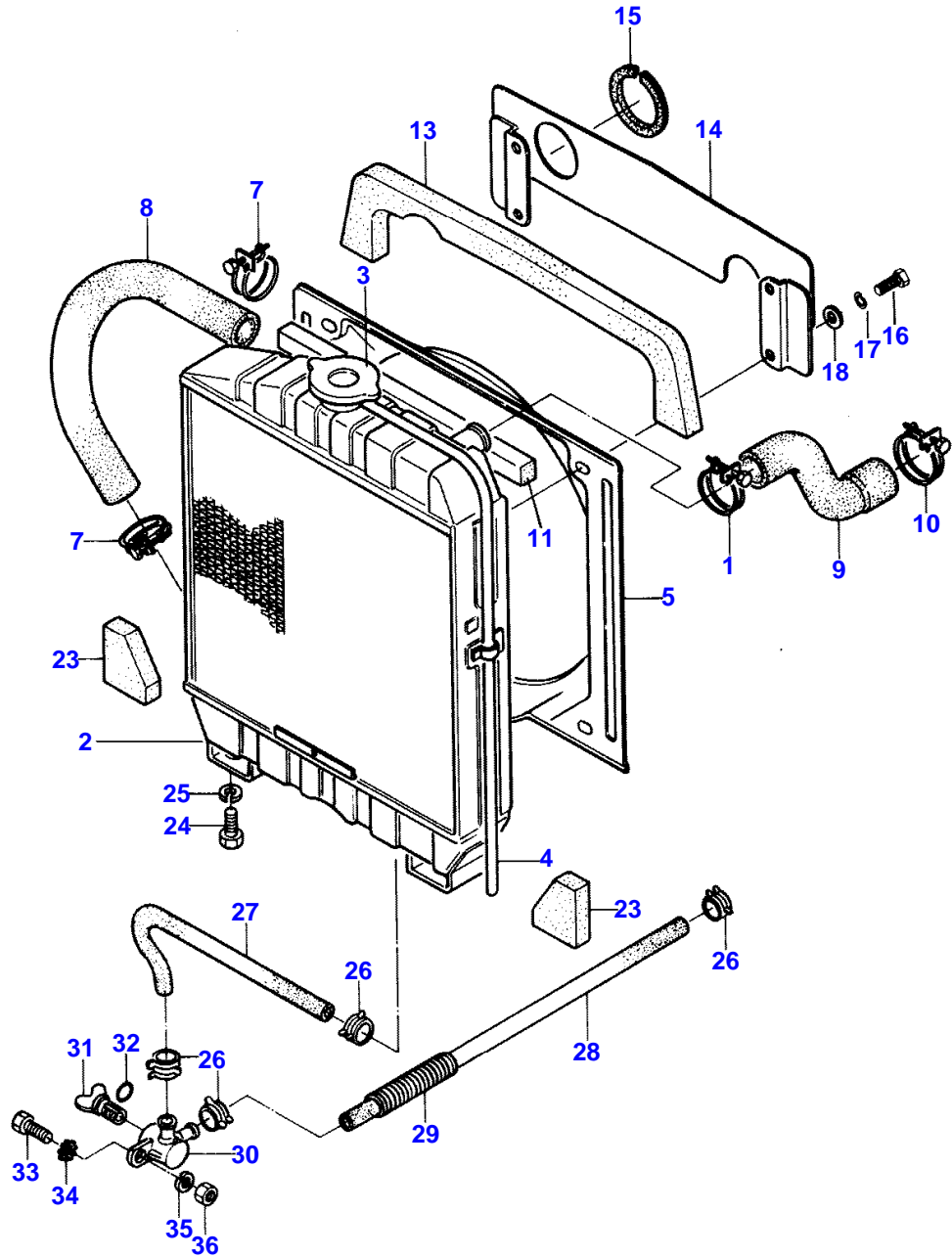
GASKET KITS

Item	Part Number	Qty	Description
	3435603M91	1	Kit, Joint
1	3435113M1	1	Gasket
2	3284113M1	1	Gasket
3	3283959M1	1	Gasket
4	3435122M1	1	Gasket
5	3435125M1	1	Gasket
6	3280025M1	3	Gasket
7	3280071M1	1	Gasket
8	3284112M1	1	Gasket
	3284625M91	1	Kit,Joint/Gasket
18	3284012M1	1	Gasket
19	3283873M1	1	Gasket
20	3283874M1	1	Gasket
21	3283491M1	1	Gasket
22	3280105M1	1	Gasket
23	3284121M1	1	Gasket
24	3284084M1	1	Gasket
25	3284082M1	1	Gasket
26	3283987M1	1	Gasket
27	3280194M1	1	O Ring
28	3283875M1	1	Gasket

14

RADIATOR

2962 007



1st Print

651 506 M91 (Issue 1) 1/84

Buy Now



Our support email:

ebooklibonline@outlook.com