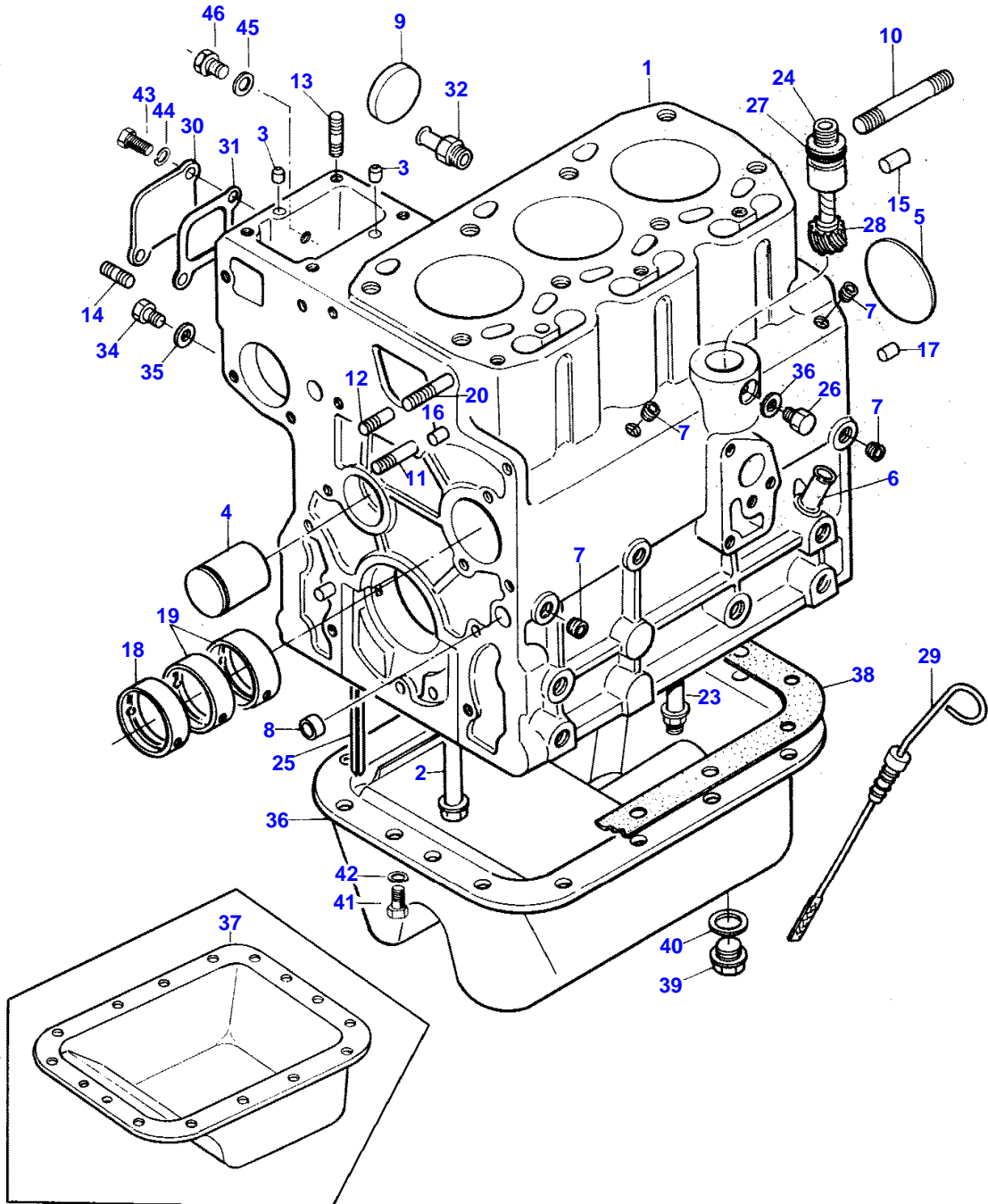


Page Title	Page Number
CYLINDER BLOCK AND OIL PAN	2
CAMSHAFT, TIMING GEAR	5
PISTONS, CONNECTING RODS, CRANKSHAFT AND FLYWHEEL	6
CYLINDER HEAD	9
LUBRICATING SYSTEM	10
GASKET KITS	13
RADIATOR	14
WATER PUMP AND OUTLET	17
AIR CLEANER AND MUFFLER	18
FUEL TANK	21
INJECTION SYSTEM	22
THROTTLE LINKAGE	25
GOVERNOR	26
ELECTRICAL WIRING	29
ALTERNATOR	30
STARTER	33
COWL AND INSTRUMENT PANEL	34
INSTRUMENTS AND SWITCHES	37
LIGHTS	38
FRONT AXLE AND HUB	41
FRONT AXLE AND HUB	42
FRONT AXLE DRIVE	45
MANUAL STEERING	46
POWER STEERING	49
STEERING LINKS	50
POWER STEERING PUMP AND LINES	53
POWER STEERING PUMP	54
CLUTCH AND INPUT SHAFT	57
GEAR SHIFT CONTROLS	58
TRANSMISSION HOUSING	61
TRANSMISSION	62
REAR AXLE	66
FRONT DRIVE AND CONTROLS	69
DIFFERENTIAL	70
DIFFERENTIAL LOCK CONTROLS	73
P.T.O. EXTENSION	74
BRAKES	77
GASKET SET	78
BRAKE AND CLUTCH CONTROLS	81
HYDRAULIC PUMP AND LINES	82
HYDRAULIC PUMP	85
LIFT COVER, PISTON AND ARMS	86
HYDRAULIC LIFT CONTROLS	89
DRAFT CONTROL	90
CONTROL VALVE AND COVER	93
LIFT LINKAGE	94
P.T.O. GUARD AND DRAWBAR	97
HOOD, GRILLE AND FRAME	98
FENDERS AND STEP PLATES	101
SEAT AND FLOORS	102
WHEELS AND RIMS	105
EMBLEMS AND LABELS	106
WEIGHT ACCESSORIES	109
ELECTRIC P.T.O. CLUTCH - FRONT MOUNTED	110
ACCESSORIES	113
ACCESSORIES	114
AUXILIARY HYDRAULICS	117
SINGLE SPOOL VALVE	118
TWO SPOOL VALVE	121
PAINT AND OIL - RED ENAMEL (M-1041)	122

2

CYLINDER BLOCK AND OIL PAN

2963 001-2



1ST PRINT

651 514 M92 (ISSUE 1) 6/88

CYLINDER BLOCK AND OIL PAN

Item	Part Number	Qty	Description	Comments
	3439709M91	1	Engine	(A)
	3439670M91	1	Engine	(B)
	3439671M91	1	Block	
1	3435691M91	1	Cylinder Block	
2	3605087M1	8	Bolt	(C)
	3284003M1	8	Bolt	(D)
3	3284004M1	2	Locator	
4	3284006M1	1	Shaft	
5	3284005M1	1	Plate	Diameter 55 MM
6	3280498M1	1	Adaptor	
7	3283891M1	4	Plug	1/8" P.T.
8	3280120M1	2	Plug	Diameter 14 MM
9	3280121M1	3	Plug	Diameter 40 MM
10	3435693M1	2	Stud	
11	3435018M1	1	Stud	M8 - 1.5 X 55 MM
12	3284117M1	1	Stud	M8 - 1.5 X 35 MM
13	3284846M1	4	Stud	M8 - 1.5 X 22 MM
14	3284845M1	1	Stud	M8 - 1.5 X 20 MM
15	1440690X1	2	Pin	10 X 22 MM
16	3283991M1	2	Locator	
17	3435645M1	2	Pin	
18	3284001M1	1	Bush	
19	3284002M1	2	Bush	
20	3435695M1	2	Stud	M8 - 1.5 X 70 MM
23	3605088M1	1	Bolt	(C)
	3437341M1	1	Bolt	(D)
24	3283980M1	1	Guide	
25	3283981M1	4	Gasket	
26	3283982M1	1	Screw	
27	3283983M1	1	Gasket	
28	3283984M1	1	Worm Gear	
29	3435134M1	1	Gauge	
30	3283986M1	1	Plate	
31	3283987M1	1	Gasket	
32	3283988M1	1	Union	
34	3283978M1	1	Screw	
35	3283538M1	2	Gasket	
36	3435138M92	1	Pan	(E)
37	3435138M91	1	Pan	(F)
38	3283491M1	1	Gasket	
39	3280104M1	1	Plug	
40	3280105M1	1	Gasket	
41	1440711X1	16	Bolt Metric	
42	353446X1	16	Lock Washer	
43	339560X1	2	Screw Metric	
44	353441X1	2	Lock Washer	
45	3436695M1	1	Short Engine	(G)
46	3435416M1	1	Screw	(G)
				(A)
				Two Wheel Drive
				(B)
				Four Wheel Drive
				(C)
				Two Wheel Drive
				From Serial or Engine Number 02414
				Four Wheel Drive
				From Serial or Engine Number 41837
				(D)
				Two Wheel Drive
				Up to Serial or Engine Number 02414
				Four Wheel Drive
				Up to Serial or Engine Number 41837
				(E)
				Two Wheel Drive
				From Serial or Engine Number 00625
				Four Wheel Drive
				From Serial or Engine Number 40482
				(F)
				Two Wheel Drive
				Up to Serial or Engine Number 00625

MASSEY FERGUSON

MF 1030 COMPACT TRACTOR - 651514EA

651514EA

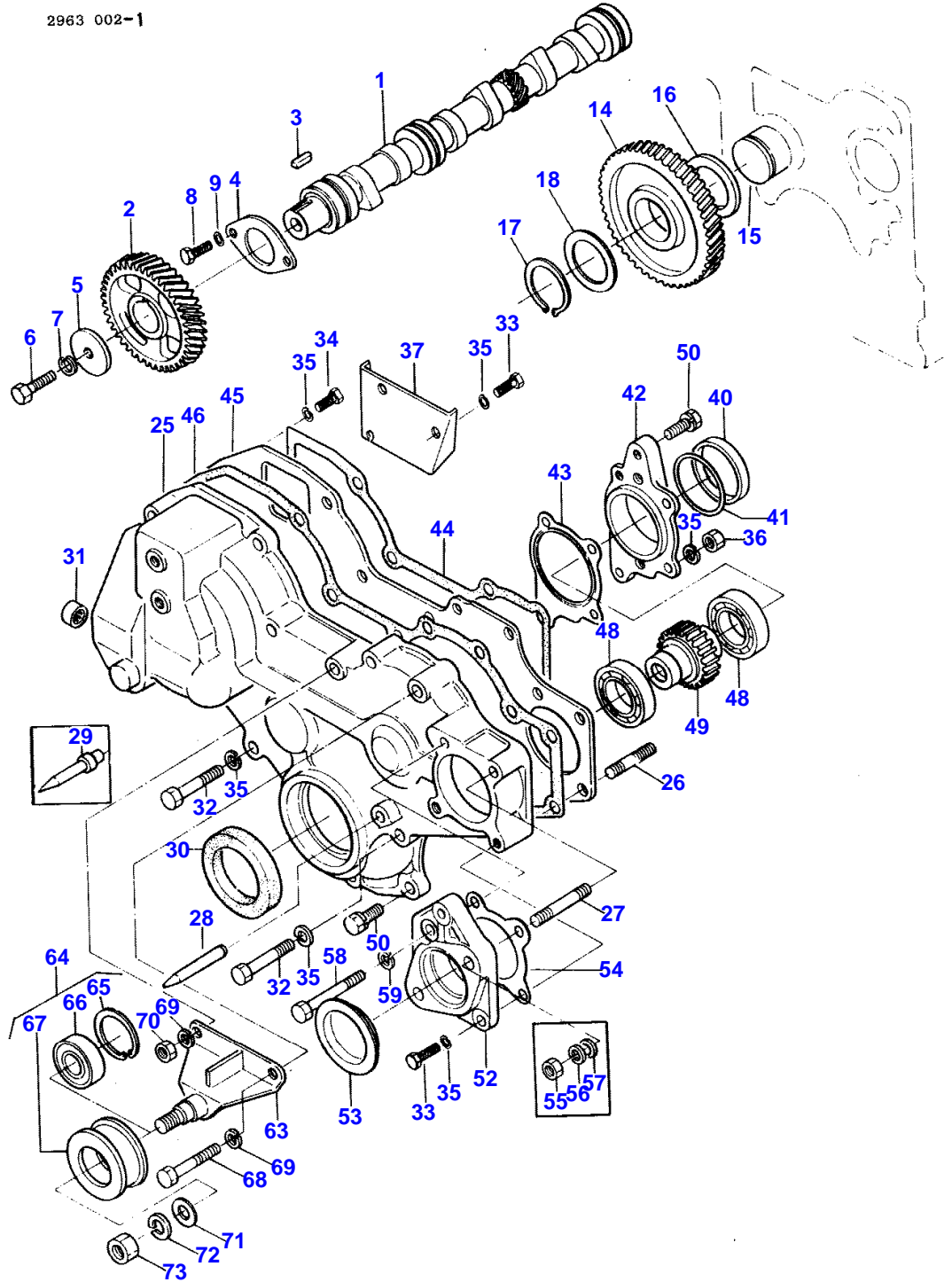
CYLINDER BLOCK AND OIL PAN

2

Item	Part Number	Qty	Description	Comments
				Four Wheel Drive
				Up to Serial or Engine Number 40482
				(G)
				Two Wheel Drive
				From Serial or Engine Number 00582
				Four Wheel Drive
				From Serial or Engine Number 40475

CAMSHAFT, TIMING GEAR

2963 002-1



1ST PRINT

651 514 M92 (ISSUE 1) 6/88

CAMSHAFT, TIMING GEAR

Item	Part Number	Qty	Description	Comments
1	3283523M1	1	Camshaft	
2	3283524M1	1	Pinion	
3	3283525M1	1	Key	
4	3283526M1	1	Plate	
5	3280148M1	1	Washer	
6	1442558X1	1	Bolt	
7	339376X1	1	Lock Washer	
8	390379X1	2	Bolt Metric	
9	353446X1	2	Lock Washer	
14	3283864M91	1	Pinion	
15	3284006M1	1	Shaft	
16	3283868M1	1	Spacer	
17	3283863M1	1	Clip	
18	3283865M1	AR	Thrust Washer	
	3283866M1	AR	Thrust Washer	
	3283867M1	AR	Thrust Washer	
	3435706M91	1	Cover	
25		1		Not serviced, order 3435706M91
26	3283884M1	2	Stud	M8 - 1.5 X 30 MM
27	3435710M1	2	Stud	
28	3438402M1	1	Point	(A)
29	3435709M1	1	Plate	(B)
30	3283885M1	1	Gasket	
31	3283886M1	2	Bush	
32	339168X1	3	Bolt Metric	
33	339123X1	5	Screw Metric	
34	390379X1	6	Bolt Metric	
35	353446X1	15	Lock Washer	
36	1440203X1	3	Nut Metric	
37	3283883M1	1	Plate	
40	3435699M1	1	Spacer	
41	3435701M1	AR	Washer	
	3435702M1	AR	Washer	
	3435703M1	AR	Washer	
42	3435697M1	1	Case Assy	
43	3435704M1	1	Gasket	
44	3283873M1	1	Gasket	
45	3435711M1	1	Plate	
46	3283874M1	1	Gasket	
48	339065X1	2	Bearing Ball	
49	3435700M1	1	Pinion	
50	3283872M1	5	Bolt	
52	3435698M1	1	Flange	
53	3435707M1	1	Cover	
54	3435705M1	1	Gasket	
55	1441409X1	2	Nut Metric	
56	339376X1	2	Lock Washer	
57	390734X1	2	Washer Metric	
58	3435696M1	1	Screw	
59	353446X1	1	Lock Washer	
4 WD W/POWER STEERING				
63	3435712M91	1	Support	
	3435716M91	1	Support	
65	3283774M1	1	Bush	
66	3435718M1	1	Bearing	
67		1		Not serviced, order 3435716M91
68	339291X1	1	Bolt Metric	
69	353446X1	2	Lock Washer	
70	1440203X1	2	Nut Metric	
71	390735X1	1	Washer Metric	
72	339369X1	1	Lock Washer	
73	1440218X1	1	Nut Metric	
(A) Two Wheel Drive From Serial or Engine Number 01764 Four Wheel Drive From Serial or Engine Number 41422 (B) Two Wheel Drive Up to Serial or Engine Number 01764				

MASSEY FERGUSON

MF 1030 COMPACT TRACTOR - 651514EA

651514EA

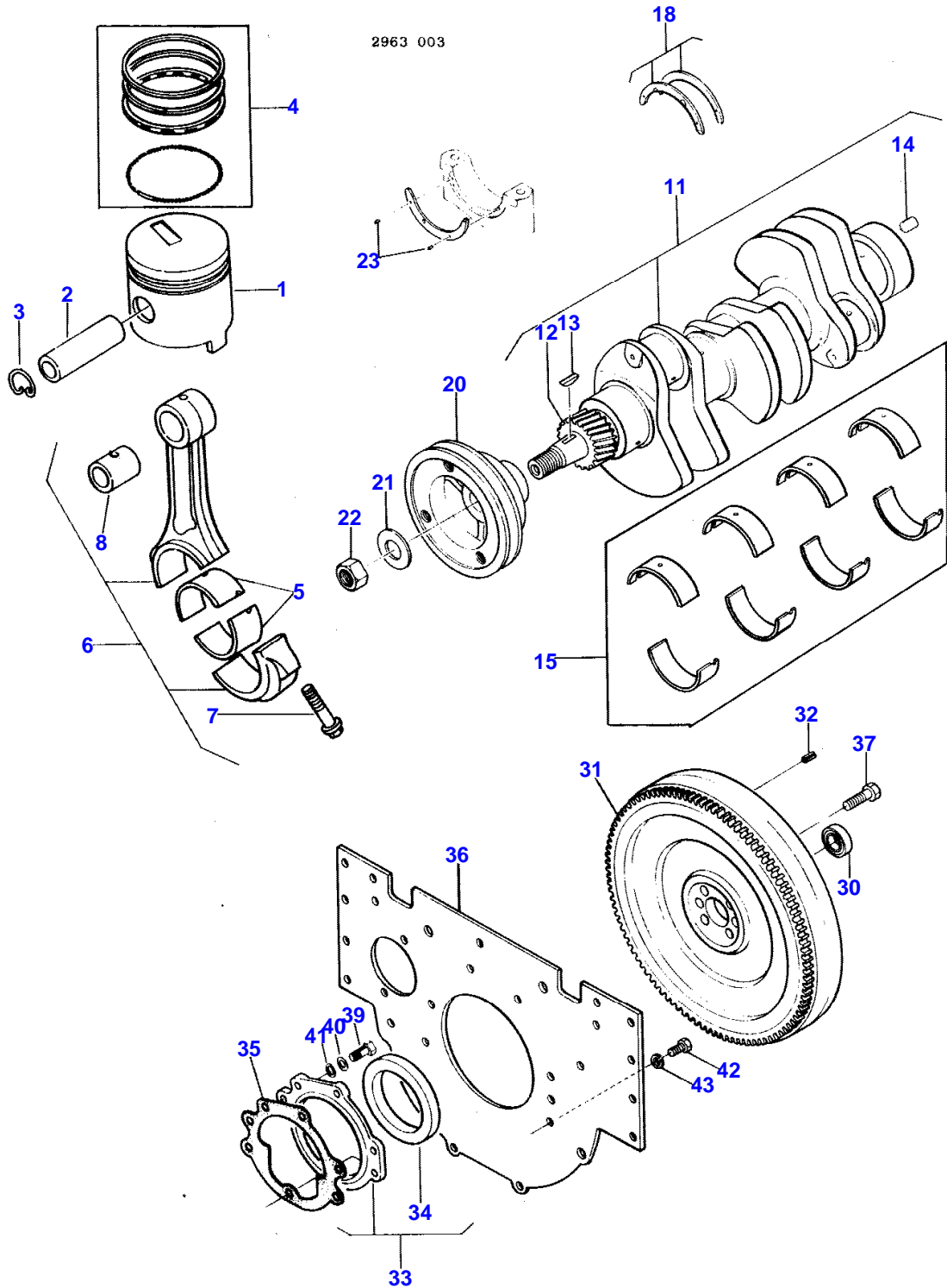
CAMSHAFT, TIMING GEAR

5

Item	Part Number	Qty	Description	Comments
				Four Wheel Drive Up to Serial or Engine Number 41422

6

PISTONS, CONNECTING RODS, CRANKSHAFT AND FLYWHEEL



1st Print

651 514 M92 (ISSUE 1) 6/88

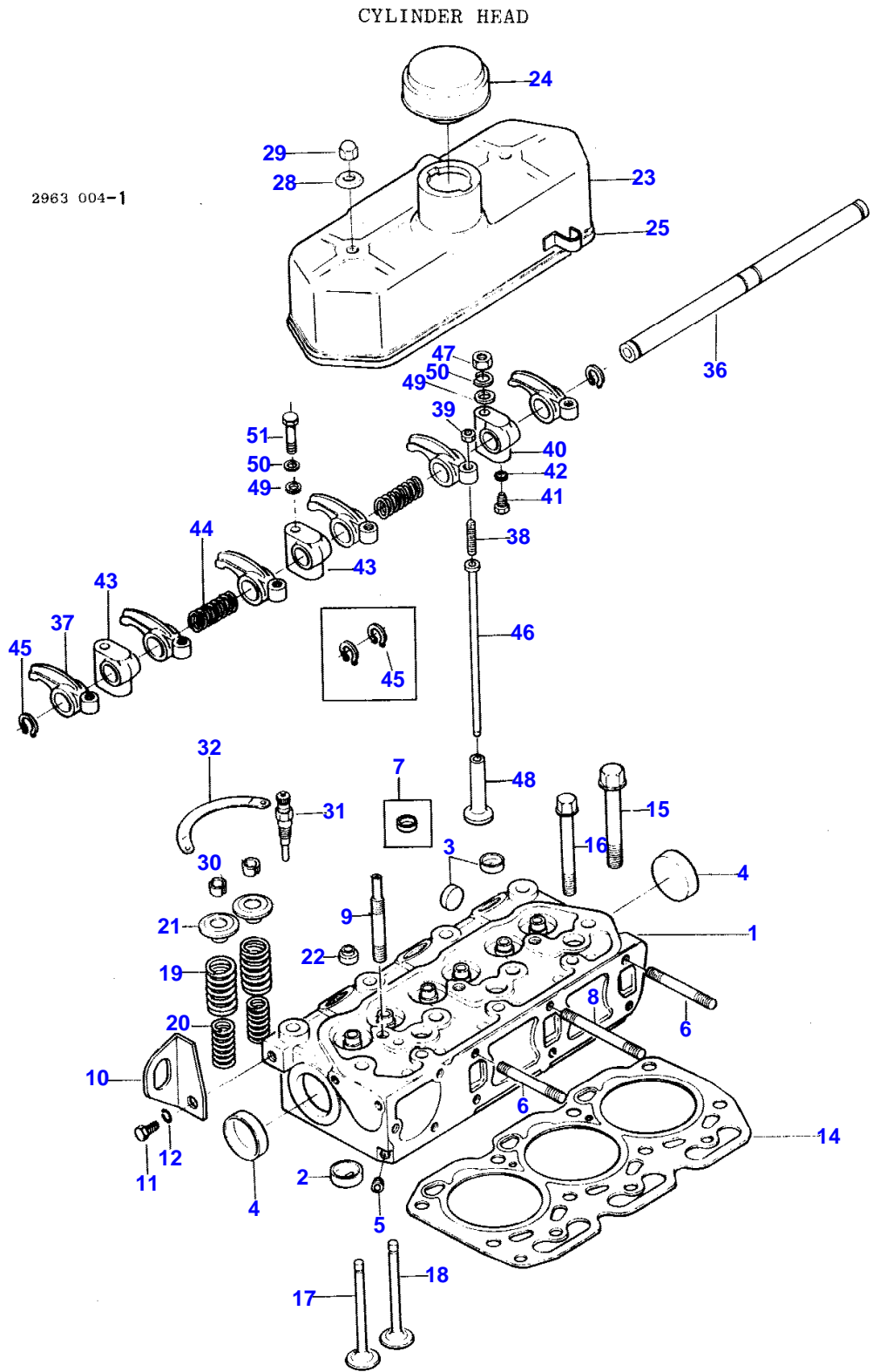
MASSEY FERGUSON**MF 1030 COMPACT TRACTOR - 651514EA**

651514EA

PISTONS, CONNECTING RODS, CRANKSHAFT AND FLYWHEEL

6

Item	Part Number	Qty	Description	Comments
1	3435719M1	3	Piston	
	3436476M1	3	Piston	+ .50 MM
2	3435724M1	3	Piston Pin	
3	3281268M1	6	Segment	
4	3436477M91	3	Ring	
	3436478M91	3	Ring	+ .50 MM
5	3283499M1	6	Bearing	
6	3435725M91	3	Conrod	
7	3283503M1	2	Bolt	
8	3282524M1	1	Bush	
11	3435728M91	1	Crankshaft	
12	3283512M1	1	Pinion	
13	3280001M1	2	Key	
14	3280931M1	1	Pin	
15	3284626M91	1	Kit, Bearing	
	3284627M91	1	Kit, Bearing	- .25 MM
	3284628M91	1	Kit, Bearing	- .50 MM
18	3284629M91	1	Parts Pack	
	3284630M91	1	Parts Pack	+ .25 MM
	3284631M91	1	Parts Pack	+ .50 MM
20	3435727M1	1	Pulley	
21	3280140M1	1	Washer	
22	1441611X1	1	Nut Metric	
23	3280947M1	4	Pin	
	3435730M91	1	Flywheel	
30	3435646M1	1	Bearing Assy	
31	3283516M1	1	Annular Gear	
32	3435733M1	3	Clevis Pin	
33	3284011M91	1	Housing	
34	3283518M1	1	Gasket	
35	3284012M1	1	Gasket	
36	3284013M1	1	Plate	
37	1441302X1	4	Bolt Metric	
39	339337X1	1	Screw Metric	
	391931X1	4	Bolt Metric	
40	390972X1	5	Washer Metric	
41	353446X1	5	Lock Washer	
42	1441134X1	6	Screw Metric	
43	339376X1	6	Lock Washer	



1ST PRINT

651 514 M92 (ISSUE 1) 6/88

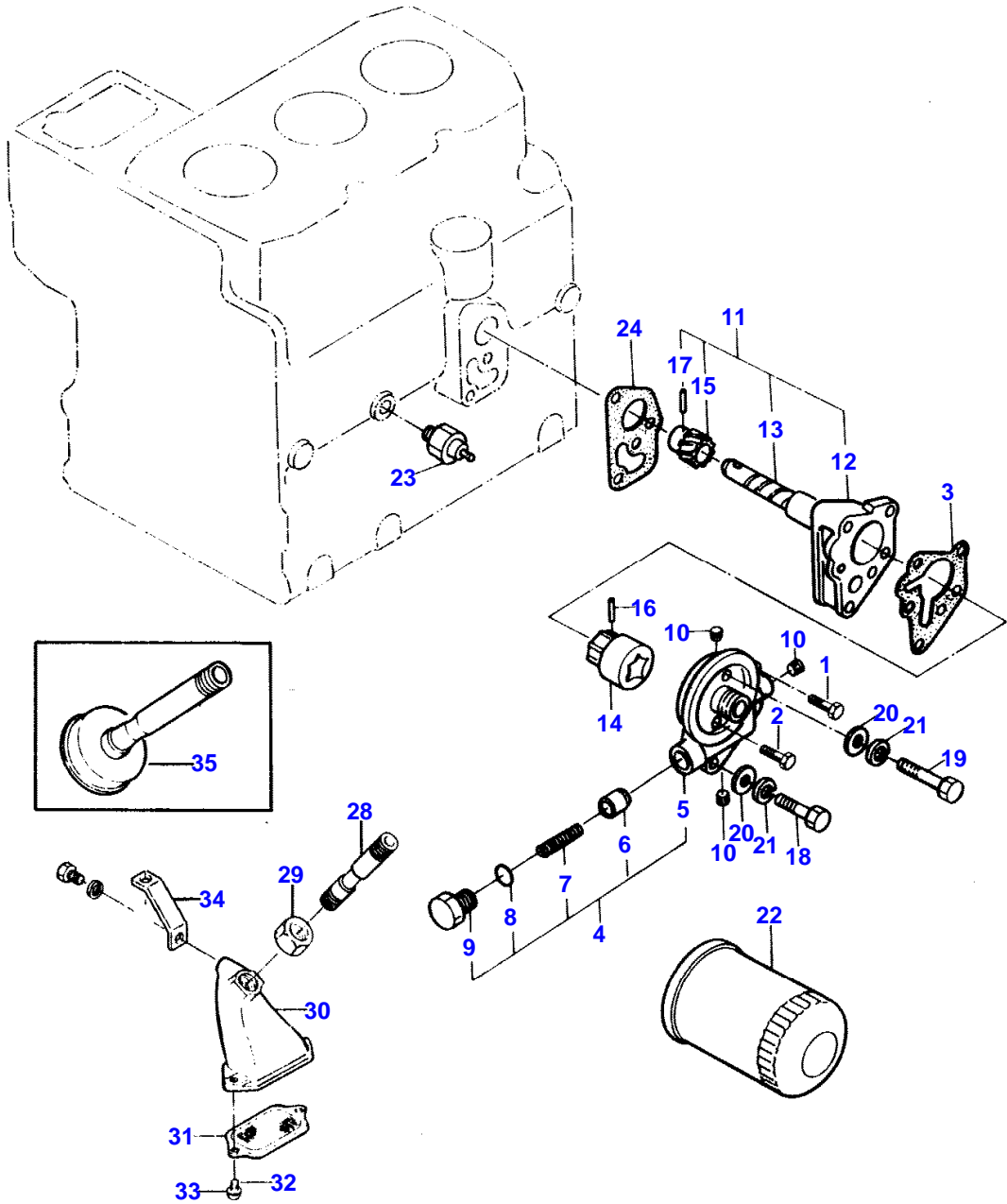
CYLINDER HEAD

Item	Part Number	Qty	Description	Comments
1	3435667M91	1	Cylinder Head	
2	3435117M1	3	Insert	
3	3280312M1	6	Plug	Diameter 20 MM
4	3280121M1	2	Plug	Diameter 40 MM
5	3283891M1	1	Plug	1/8" P.T.
6	3283950M1	4	Stud	M8 - 1.5 X 65 MM
7	3280074M1	2	Cap	Diameter 16 MM (A)
8	3435118M1	2	Stud	
9	3283952M1	2	Stud	M8 X 1.25 X M10 X 1.25 X 95 MM
10	3281257M1	1	Angle	
11	390379X1	1	Bolt Metric	
12	353446X1	1	Lock Washer	
14	3435113M1	1	Gasket	
15	3283938M1	8	Bolt	
16	3283939M1	3	Bolt	
17	3435109M1	3	Valve	
18	3435110M1	3	Valve	
19	3435111M1	6	Spring	
20	3435112M1	6	Spring	
21	3283935M1	6	Retainer	
22	3283936M1	6	Gasket	
23	3435669M91	1	Cover	
24	3280074M1	1	Cap	
25	3280071M1	1	Gasket	
28	3280072M1	2	Washer	
29	3005908X1	2	Nut	
30	3280023M1	12	Lock	
31	3284128M1	3	Glow Plug	
32	3284129M1	2	Plate	
	3283527M91	1	Rocker Shaft Ass	
36	3283529M91	1	Shaft	
	3283530M91	6	Arm	
37	3283536M1	1	Arm	
38	3283537M1	1	Screw	
39	1440203X1	1	Nut Metric	
	3283531M91	1	Support	
40	3283539M1	1	Support	
41	3283540M1	1	Bolt	
42	3283538M1	1	Gasket	
43	3283532M1	2	Support	(B)
44	3283533M1	2	Spring	
45	1441970X1	2	Circlip	19 MM X 1.25 MM (C)
46	3435150M1	6	Stem	
47	1441409X1	2	Nut Metric	
48	3280145M1	6	Valve	
49	390734X1	2	Washer Metric	
50	339376X1	2	Lock Washer	
51	3437309M1	1	Bolt Metric	
				(A) Two Wheel Drive From Serial or Engine Number 01664 Four Wheel Drive From Serial or Engine Number 41348
				(B) Two Wheel Drive Up to Serial or Engine Number 00582 Four Wheel Drive Up to Serial or Engine Number 40475 QUANTITY WAS 1
				(C) Two Wheel Drive Up to Serial or Engine Number 00582 Four Wheel Drive Up to Serial or Engine Number 40475 QUANTITY WAS 4

10

LUBRICATING SYSTEM

2963 005-1



LET PRINT

651 514 M92 (ISSUE 1) 6/88

LUBRICATING SYSTEM

Item	Part Number	Qty	Description	Comments
	3284123M91	1	Parts Pack	
1	3283924M1	1	Bolt	
2	3283925M1	1	Bolt	
3	3283926M1	1	Gasket	0.1 MM
4	3283927M91	1	Head	
5	3283894M1	1	Cover	
6	3283892M1	1	Pressure Valve	
7	3283893M1	1	Spring	
8	3280194M1	1	O Ring	
9	3280193M1	1	Bolt	
10	3283891M1	3	Plug	1/8" P.T.
11	3283928M91	1	Oil Pump	
12		1	Body Pump	Not serviced, order 3283928M91
13		1	Shaft	Not serviced, order 3283928M91
14		1	Rotor	Not serviced, order 3283928M91
15	3283929M1	1	Pinion	
16	3280184M1	1	Pin	
17	3283930M1	1	Pin	
18	339291X1	2	Bolt Metric	
19	3284119M1	1	Bolt	
20	390972X1	3	Washer Metric	
21	353446X1	3	Lock Washer	
22	3435171M1	1	Oil Filter	
23	3284120M1	1	Switch,Indirect	
24	3284121M1	1	Gasket	
28	3437333M1	1	Pipe	(A)
29	3437334M1	1	Nut	(A)
30	3437336M1	1	Chamber	(A)
31	3437337M91	1	Screen	(A)
32	3284035M1	2	Screw	(A)
33	339381X1	2	Lock Washer	(A)
34	3437340M1	1	Bracket	(A)
35	3435172M91	1	Grille	(B)
				(A)
				Two Wheel Drive
				From Serial or Engine Number 00995
				Four Wheel Drive
				From Serial or Engine Number 40766
				(B)
				Two Wheel Drive
				Up to Serial or Engine Number 00995
				Four Wheel Drive
				Up to Serial or Engine Number 40766

Buy Now



Our support email:

ebooklibonline@outlook.com