

Page Title	Page Number
ELEVATOR TO TABLE DRIVE - PADDLE	2
RIGHT HAND DRIVE - PADDLE ELEVATOR	5
ELEVATOR, TOP SHAFT AND PADDLE - PADDLE	6
ELEVATOR SHAFT, DRIVE AND PADDLES - PADDLE	9
ELEVATOR EXTENSION - PADDLE	10
ELEVATOR TOP SHAFT AND DRIVE	14
RIGHT HAND DRIVE - SLAT ELEVATOR	17
ELEVATOR AND EXTENSION	18
ELEVATOR CLUTCH - ELECTROMAGNETIC THROW-OUT	22
ELEVATOR SHIELDS	25
CYLINDER HOUSING	26
CYLINDER DRIVE	29
ELECTRIC ACTUATOR - CYLINDER SPEED, FANNING MILL	30
CYLINDER DRIVE	33
CYLINDER (RASP-BAR) - 850/855	37
CYLINDER (RASP-BAR) - 855E	38
CONCAVE (RASP-BAR) - 850/855	41
CONCAVE (RASP-BAR) - 855E	42
CYLINDER (SPIKE TOOTH)	45
CONCAVE (SPIKE TOOTH)	46
CONVERSION - RASP BAR CYLINDER TO SPIKE TOOTH	49
CONVERSION - SPIKE TOOTH CYLINDER TO RASP BAR	50
CONCAVE CONTROL	53
STONE TRAP, FEED PLATE	54
FRONT BEATER	57
REAR BEATER	58
WALKER BODY	61
WALKER BODY EXTENSION	62
STRAW WALKERS	65
STRAW WALKERS	66
STRAW WALKERS AND RETURNS ELEVATOR DRIVE	69
STRAW WALKER DRIVE SHIELD	70
GRAIN PAN AND SHAKER SHAFT	73
FANNING MILL	74
SHAKER SHOE AND SIEVES	77
SHAKER SHOE CONVERSION	78
SCREENS - SHAKER SHOE	81
HOOD, CURTAIN AND DEFLECTOR	82
HOOD AND CURTAIN - MF 855/855E	85
CASCADE SEPARATOR - SHEET METAL	86
CASCADE SEPARATOR - UPPER AND LOWER AUGERS	89
CASCADE SEPARATOR	90
CASCADE SEPARATOR - ELEVATOR HOUSING	93
CASCADE SEPARATOR - CYLINDER	94
STRAW SPREADER - 850 COMBINE	97
STRAW SPREADER DRIVE - MF 850 COMBINE	98
STRAW SPREADER - 855 COMBINE	101
STRAW SPREADER - 855 COMBINE	102
STRAW CHOPPER	105
STRAW CHOPPER DRIVE - GRAIN, RICE, SOYBEAN	106
STRAW CHOPPER SHIELD AND CURTAIN	110
LEFT HAND DRIVE - FANNING MILL	113
LEFT HAND DRIVE IDLERS - FANNING MILL	114
GRAIN TANK	117
GRAIN TANK EXTENSION - 850/855	118
GRAIN ELEVATOR	121
GRAIN ELEVATOR DRIVE	122
GRAIN TANK UNLOADER BOTTOM	125
GRAIN TANK UNLOADER TOP	126
GRAIN TANK UNLOADER EXTENSION	129
GRAIN TANK UNLOADER DRIVE	130
RETURNS ELEVATOR	133
RETURNS ELEVATOR CARRIERS	134
LEFT SIDE SHIELDS - MUD AND GRAIN TANK UNLOADER DRIVE	138
RIGHT SIDE SHIELDS	141
MAIN FRAME	142

TABLE OF CONTENT

FRONT AXLE, SHAFTS AND COUPLINGS - 4 SPEED TRANSMISSION	145
FRONT AXLE, SHAFTS AND COUPLINGS	146
FRONT WHEELS	149
REAR MOTOR HOUSING	150
MAIN DRIVE AND CONTROLS	153
TRACTION DRIVE - HYDROSTATIC TRANSMISSION	154
VARIABLE SPEED TRACTION DRIVE - 4 SPEED TRANSMISSION	157
TRACTION CLUTCH - 4 SPEED TRANSMISSION	161
GEAR SHIFT - 4 SPEED TRANSMISSION	165
GEAR SHIFT - HYDROSTATIC TRANSMISSION	166
STEERING PEDESTAL	169
STEERING WHEEL, COLUMN AND CONTROL UNIT	170
CONSTANT MESH TRANSMISSION - 4 SPEED, NORTH AMERICA ONLY	173
CONSTANT MESH TRANSMISSION - HYDROSTATIC, NORTH AMERICA ONLY	177
CONSTANT MESH TRANSMISSION - HYDROSTATIC, EUROPE ONLY	181
HYDROSTATIC TRANSMISSION CONTROLS	185
HYDROSTATIC PRESSURE RELEASE CONTROLS	186
HYDROSTATIC PUMP DRIVE AND MOTOR	189
HYDROSTATIC PUMP - SUNSTRAND	190
PUMP DRIVE MOTOR - SUNSTRAND	194
HYDROSTATIC COOLING SYSTEM	197
OIL COOLER FAN AND DRIVE	198
FINAL DRIVE	201
PARKING BRAKE CONTROL	205
TURNING BRAKES	206
BRAKE CYLINDER, BRAKE ASSEMBLY	209
TRACK, FRAME AND AXLE - CONVERSION - WHEELS TO TRACK	210
TRACK, IDLER AND ROLLERS - CONVERSION - WHEELS TO TRACK	213
REAR WHEELS-4 WHEEL DRIVE	214
A FRAME - GRAIN AND RICE	217
FIXED REAR AXLE - GRAIN	218
ADJUSTABLE REAR AXLE	221
ADJUSTABLE REAR AXLE - POWERED REAR DRIVE	222
ADJUSTABLE REAR AXLE - POWERED REAR DRIVE	225
HYDRAULIC PUMP - POWERED REAR DRIVE	226
PLANETARY GEAR BOX - POWERED REAR DRIVE	229
SELECTOR VALVE - POWERED REAR DRIVE	230
REAR WHEEL DRIVE, ADJUSTABLE AXLE	233
CONTROL VALVE, CHARGING PUMP	234
MOTOR ASSEMBLY - MOTOR HOUSING AND AXLE YOKE	237
MOTOR ASSEMBLY	238
MOTOR ASSEMBLY	241
MOTOR ASSEMBLY - PLANET PINION, CARRIER, HOUSING	242
REAR WHEEL DRIVE CONTROL VALVE AND WIRING	245
OPERATOR'S PLATFORM AND LADDER	246
CONTROL BOX	249
HARNESS, INSTRUMENTS AND SWITCHES	250
HARNESS AND SWITCHES	253
HEADER HEIGHT CONTROL ENHANCED WIRING	254
ELECTRICAL HARNESS	257
MONITOR SYSTEM	258
GRAIN LOSS MONITOR	262
BATTERY AND WIRING - AT6-3544 ENGINE	265
ALTERNATOR	266
STARTER	269
SOLENOID	270
STARTER	273
SOLENOID	274
LIGHTING	277
LIGHTS	278
ROAD LIGHTS - EUROPE ONLY	281
LIGHTS - EUROPE ONLY	282
ELECTRIC ETHER STARTING KIT	285
SEAT	286
SEAT	289
ENGINE COVER	290
ENGINE COVER EXTENSION	293
ROTARY AIR INTAKE AND DRIVE - WITH CHAFF EXTRACTOR	297

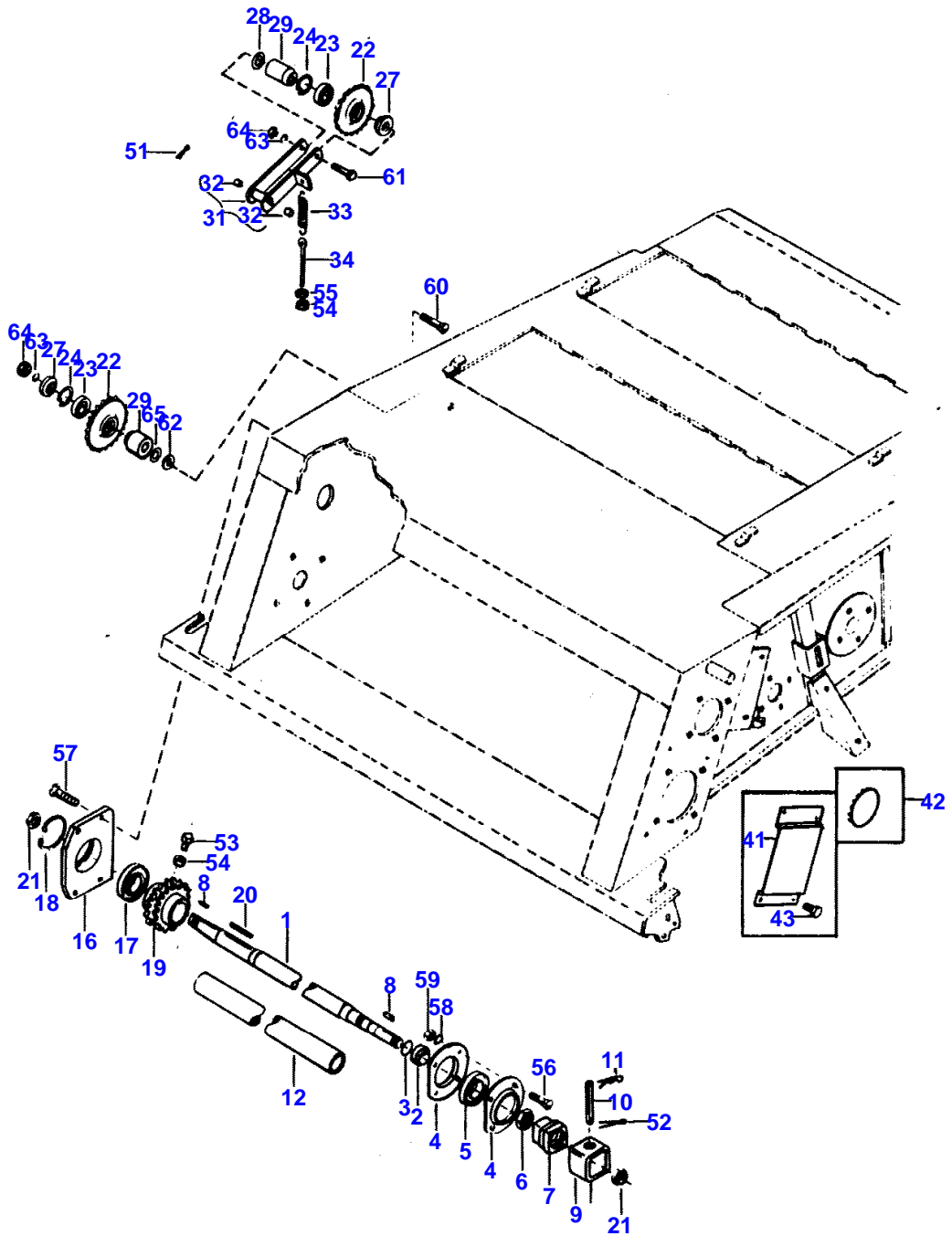
TABLE OF CONTENT

FUEL TANK, LINES, SUPPORTS AND TOOL BOX	298
HYDRAULIC CONTROLS - 4 SPEED AND HYDROSTATIC	301
MAIN HYDRAULIC CONTROL VALVE	302
HYDROSTATIC REEL DRIVE	305
HYDRAULIC PRESSURE AND RETURN LINES	306
HYDRAULIC PUMP	309
CONTROL VALVE - TABLE HEIGHT	310
CONTROL VALVE - TABLE HEIGHT, REEL FORE AND AFT	313
HYDRAULIC TANK	314
REEL LIFT HYDRAULICS	317
HYDRAULIC CONTROL REEL FORE AND AFT	318
TABLE LIFT HYDRAULICS	321
TABLE LIFT CYLINDERS	322
FLOTATION ACCUMULATOR - .7 LITER ACCUMULATOR	325
TANK UNLOADER CONTROLS	326
TANK UNLOADER HYDRAULICS	329
UNLOADER CYLINDER	330
VARIABLE SPEED HYDRAULICS - 4 SPEED	333
VARIABLE SPEED CYLINDER	334
STEERING HYDRAULICS - MF 850/855 COMBINE	337
STEERING HYDRAULICS	338
RELIEF VALVE	341
STEERING CYLINDER	342
HYDRAULIC PUMP DRIVE AND ENGINE SUPPORTS	345
GREASE HARNESS	346
BELTS	349
CHAINS	350
CHAINS - PADDLE ELEVATOR	353
CHAINS - SLAT ELEVATOR	354
CONVEYOR CHAIN	357
EMBLEMS AND LABELS	358
EMBLEMS AND LABELS - EUROPE ONLY	361
EMBLEMS AND LABELS - FRENCH	362
ACCESSORIES - POLYURETHANE PAINT	365
CYLINDER BLOCK - AT6-354.4CC AND AT6-354.4 DIESEL	366
CRANKSHAFT, FLYWHEEL, INSERTS - AT6-354.4CC AND AT6-354.4 DIESEL	369
PISTONS, RINGS AND RODS - AT6-354.4CC AND AT6354.4 DIESEL	370
CYLINDER HEAD - AT6-354.4CC AND AT6354.4 DIESEL	373
CYLINDER HEAD COVER - 354.4CC - 354.4	374
TIMING GEAR AND CAMSHAFT - AT6-354.4CC AND AT6-354.4 DIESEL	377
OIL PAN, FILTER AND PUMP - AT6-354.4CC AND AT6-354.4 DIESEL	378
OIL COOLER AND FILTER - 354.4CC - 354.4	381
GASKET SETS - AT6-354.4CC DIESEL	382
GASKET SETS - AT6-354.4 DIESEL	385
WATER PUMP AND ATTACHING PARTS - AT6-354.4CC AND AT6-354.4 DIESEL	386
MANIFOLDS AND TURBOCHARGER - AT6-354.4CC DIESEL	389
MANIFOLDS AND TURBOCHARGER	393
INJECTION SYSTEM - AT6-354.4CC AND AT6-354.4 DIESEL	394
INJECTION PUMP AND INJECTOR - AT6-354.4CC AND AT6-354.4 DIESEL	397
TURBOCHARGER - AT6-354.4CC AND AT6-354.4 DIESEL	398
FUEL FILTERS AND LINES - AT6-354.4CC AND AT6-354.4 DIESEL	401
LIFT PUMP AND FUEL FILTER - AT6-354.4CC AND AT6-354.4 DIESEL	402
AIR INTAKE AND EXHAUST - AT6-354.4CC DIESEL	405
AIR INTAKE AND EXHAUST - AT6-354.4CC DIESEL	406
THROTTLE CONTROL AND FUEL SHUT-OFF - AT6-354.4 DIESEL	409
RADIATOR, FAN, DRIVE - AT6-354.4 DIESEL	410
SCREENS - RADIATOR, FAN, DRIVE	414
CAB - SHEET METAL, WINDOW'S	417
CAB - SEALING AND TRIM	418
CAB - SEALING AND TRIM	421
CAB - SEALING AND TRIM	422
COMPRESSOR AND CONDENSOR	425
COMPRESSOR	426
AIR CONDITIONING AND LINES	429
CAB ELECTRICAL WIRING	430
PRESSURIZER	433
HEATER	434
WINDSHIELD WIPER	437

2

ELEVATOR TO TABLE DRIVE

1696 001



1ST PRINT

651 558 M92 (ISSUE 1) 3/89

MASSEY FERGUSON

MF 850/855 COMBINES, |-> 169627544 - 651558EA

651558EA

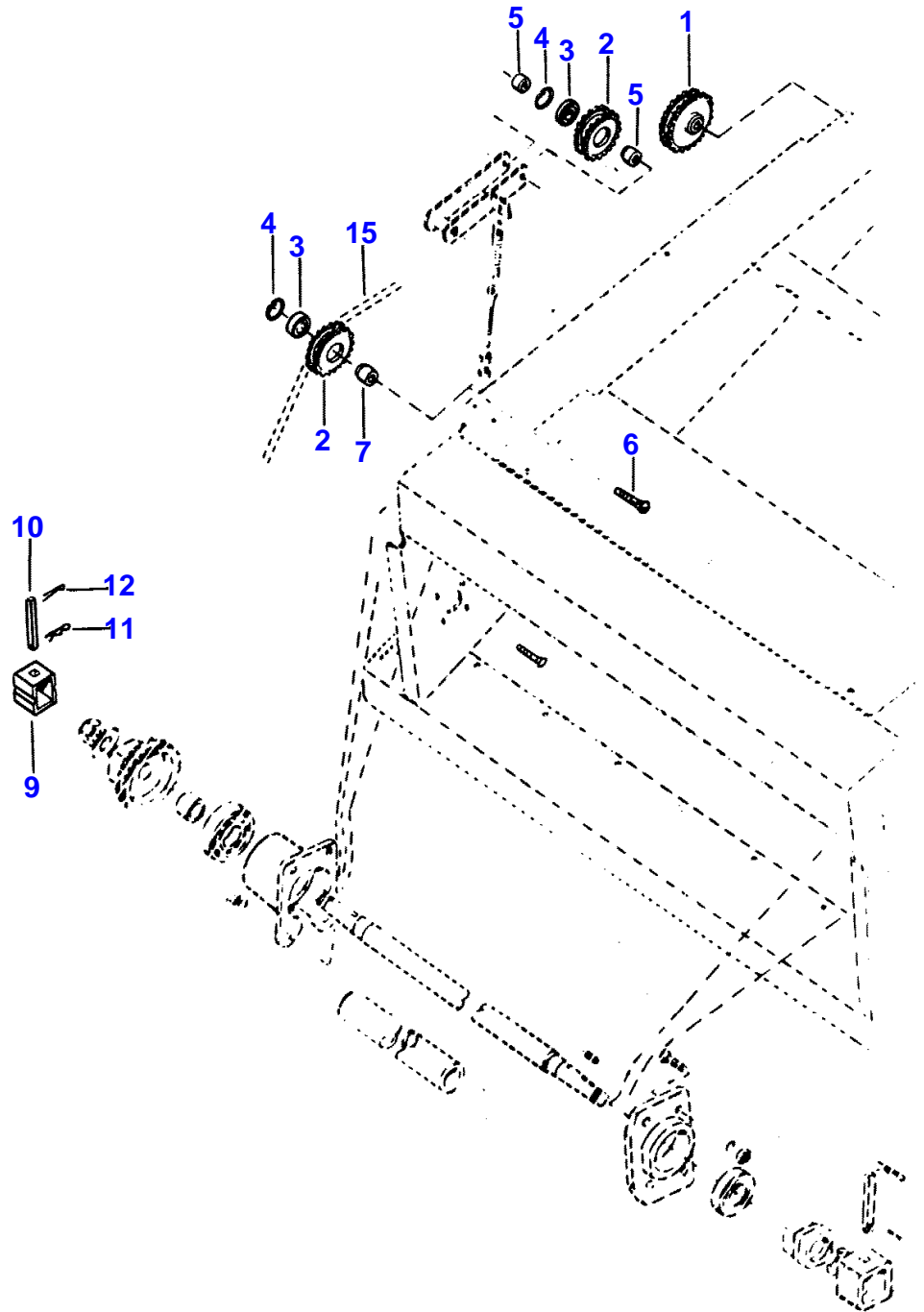
ELEVATOR TO TABLE DRIVE - PADDLE

2

Item	Part Number	Qty	Description	Comments
				PADDLE
1	258159M3	1	Shaft	
2	258139M1	1	Spacer	1-5/8 X 2-1/4 X 1"
3	358971X1	1	Ring	1-5/8" I.D. X 5/32"
4	831781M1	2	Flange	
5	832087M1	1	Bearing	
6	842444M1	1	Nut	
7	249674M1	2	Hub	
8	049378X	2	Key	5/16" X 1-1/4"
9	470040M1	1	Coupling	
10	249675M2	1	Shaft	5/8 X 4-5/16"
11	1753018M1	1	Pin	
12	258670M1	1	Tube	
16	258138M2	1	Bearing Carrier	
17	352976X1	1	Bearing	
18	352433X1	1	Circlip	3-17/32" X 7/16"
19	258143M1	1	Sprocket	3/4" Number of teeth/spines 20
20	MP001379	1	Key	3/8 X 1/4 X 2-1/2"
21	249677M1	2	Nut	
22	274424M1	2	Pinion	3/4" Number of teeth/spines 18
23	833735M1	2	Bearing	
24	353231X1	2	Circlip	1-47/64 O.D. X 1/16"
27	263392M1	2	Spacer	21/32 X 1-1/8 X 11/32"
28	365318X1	AR	Shim	45/64 X 1-1/4 X 1/32"
29	272250M1	2	Bush	
31	273016M92	1	Tensioner	
32	271644M1	2	Bush	3/4 X 7/8 X 3/4"
33	214446M1	1	Spring	
34	368243X1	1	Bolt	5/16 X 6"
41	249496M1	1	Cover	
42	359345X1	2	Plug	1-7/8"
43	365927X1	4	Self Tap Screws	
51	354068X1	AR	Pin	5/32 X 1-1/4"
52	354078X1	AR	Pin	3/16 X 1-1/4"
53	355203X1	AR	Screw Unc	
54	375108X1	AR	Nut Unc	
55	355565X1	AR	Nut Unc	
56	364224X1	AR	Bolt Unc	
57	364246X1	AR	Bolt	
58	353439X1	AR	Lock Washer	1/2"
59	375098X1	AR	Nut Unc	
60	364988X1	AR	Bolt Unc	
61	354292X1	AR	Bolt Unc	
62	365102X1	AR	Washer	21/32" X 1-5/16 X 3/16"
63	353433X1	AR	Lock Washer	
64	375099X1	AR	Nut Unc	
65	353762X1	AR	Washer	13/16 X 1-1/2 X 5/32"

RIGHT HAND DRIVE

1696 002



1ST PRINT

651 558 M92 (ISSUE 1) 3/89

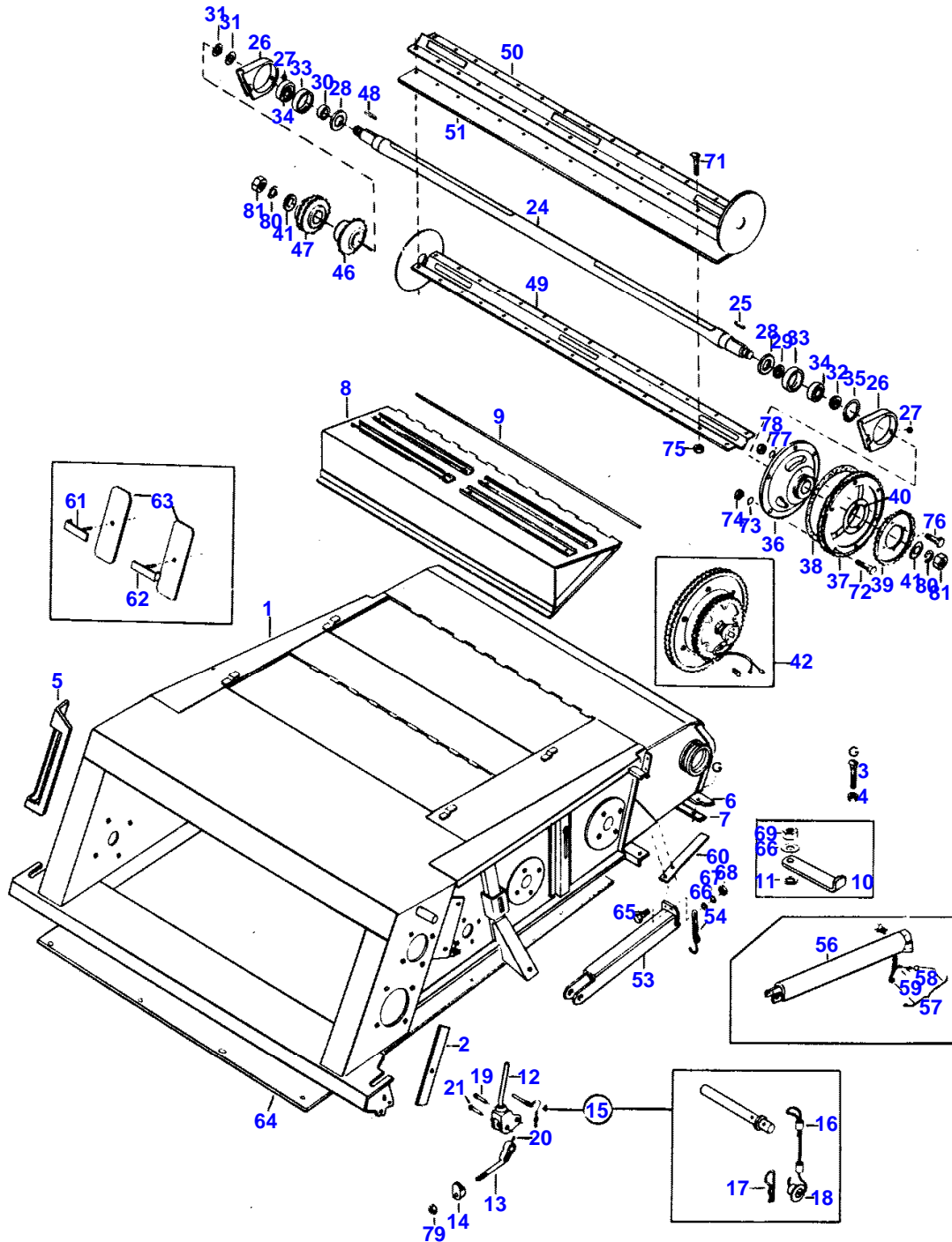
MASSEY FERGUSON**MF 850/855 COMBINES, |-> 169627544 - 651558EA****651558EA****RIGHT HAND DRIVE - PADDLE ELEVATOR****5**

Item	Part Number	Qty	Description	Comments
				PADDLE ELEVATOR
1	273366M91	1	Sprocket	Number of teeth/spines 26, 3/4"
2	274134M1	2	Sprocket	Number of teeth/spines 16, 3/4"
3	842947M1	2	Bearing Assy	
4	355978X1	2	Circlip	
5	272042M1	2	Spacer	
6	364990X1	1	Bolt	
7	274166M1	1	Bush	41/64 X 1-1/4 X 1-7/32" (A)
7	259044M1	1	Bush	41/64 X 1-1/4 X 1-47/64" (B)
9	470040M1	1	Coupling	
10	249675M2	1	Shaft	5/8 X 4-5/16"
11	1753018M1	1	Pin	
12	354078X1	1	Pin	3/16 X 1-1/4"
15		1		See Page - Reference Number 353 (A) USED LATE PRODUCTION COMBINES (B) USED EARLY PRODUCTION COMBINES

6

ELEVATOR, TOP SHAFT AND PADDLE

1696 003



1ST PRINT

651 558 M92 (ISSUE 1) 3/89

MASSEY FERGUSON

MF 850/855 COMBINES, |-> 169627544 - 651558EA

651558EA

ELEVATOR, TOP SHAFT AND PADDLE - PADDLE

6

Item	Part Number	Qty	Description	Comments
				PADDLE
1	293491M91	1	Elevator	
2	259080M1	1	Strap	
3	364943X1	8	Bolt	
4	367480X1	8	Nut Unc	
5	259081M1	1	Angle	
6	258105M2	1	Strip	
7	278692M1	1	Strap	
8	258289M92	2	Door	
9	GX001335	2	Rod	1/4 X 36-1/4"
10	273742M1	4	Handle	
11	239221M1	4	Washer	5/8 X 3/8 X 1/16"
12	260130M92	2	Lever	
13	260133M3	2	Bolt	7/8"
14	260134M2	2	Tie	
15	260138M93	2	Clevis Pin	
16	260140M1	2	Cowl	
17	195414M1	1	Hair Pin	1/32 X 1-27/64"
18	252798M1	1	Eyelet	
19	195358M1	2	Pin	5/8 X 1-27/32"
20	354078X1	2	Pin	3/16 X 1-1/4"
21	368281X1	2	Clevis Pin	5/8 X 23/32"
24	258149M1	1	Shaft	
25	049920X	1	Key Door	1/2 X 3/8 X 2"
26	273084M1	2	Bearing Carrier	
27	366268X1	2	Grommet	
28	274211M1	2	Washer	2 X 3-9/16 X .132"
29	369090X1	1	Spacer	2-1/32 X 2-1/4 X 1/8"
30	369089X1	1	Spacer	2-1/32 X 2-1/4 X 31/64"
31	364434X1	AR	Shim	.030"
	367462X1	AR	Shim	.060"
32	273990M1	1	Spacer	1-63/64 X 2-3/8 X 3/8"
33	272263M1	2	Housing	
34	833741M1	2	Bearing	
35	355994X1	1	Ring	Thickness 7/64"
36	274174M1	1	Hub	
37	259049M1	1	Sprocket	Number of teeth/spines 74, 5/8"
38	258653M1	4	Shim	.030"
39	369054X1	1	Sprocket	Number of teeth/spines 31, 3/4"
40	258651M1	2	Shim	.030"
41	460107M1	2	Washer	1-1/16 X 2-1/4 X 1/4
42		1	Electric Motor	See Page - Reference Number 22
46	273365M91	1	Sprocket	Number of teeth/spines 26, 3/4"
47	273501M91	1	Pinion	Number of teeth/spines 38, 1/2"
48	368751X1	1	Key	1/2 X 3/8 X 2-7/8"
49	258152M91	1	Paddle	
50	258156M91	1	Paddle	
51	293179M1	2	Band	
53	265618M92	1	Catch	28-15/16"
54	265893M1	1	Chain	
56	265447M91	1	Catch	EUROPE ONLY
57	272942M91	1	Pin	
58	273112M1	1	Cable	
59	260140M1	2	Cowl	
60	278703M1	3	Support	
61	259352M91	1	Angle	Left Hand
62	259354M91	1	Angle	Right Hand
63	259356M1	2	Cover	
64	801016M91	1	Bottom	(A) Bottom
65	353681X1	AR	Bolt Unc	
66	353755X1	AR	Washer	11/32 X 11/16 X 5/64"
67	353446X1	AR	Lock Washer	5/16"
68	355565X1	AR	Nut Unc	
69	832302M1	AR	Nut	

MASSEY FERGUSON

MF 850/855 COMBINES, |-> 169627544 - 651558EA

651558EA

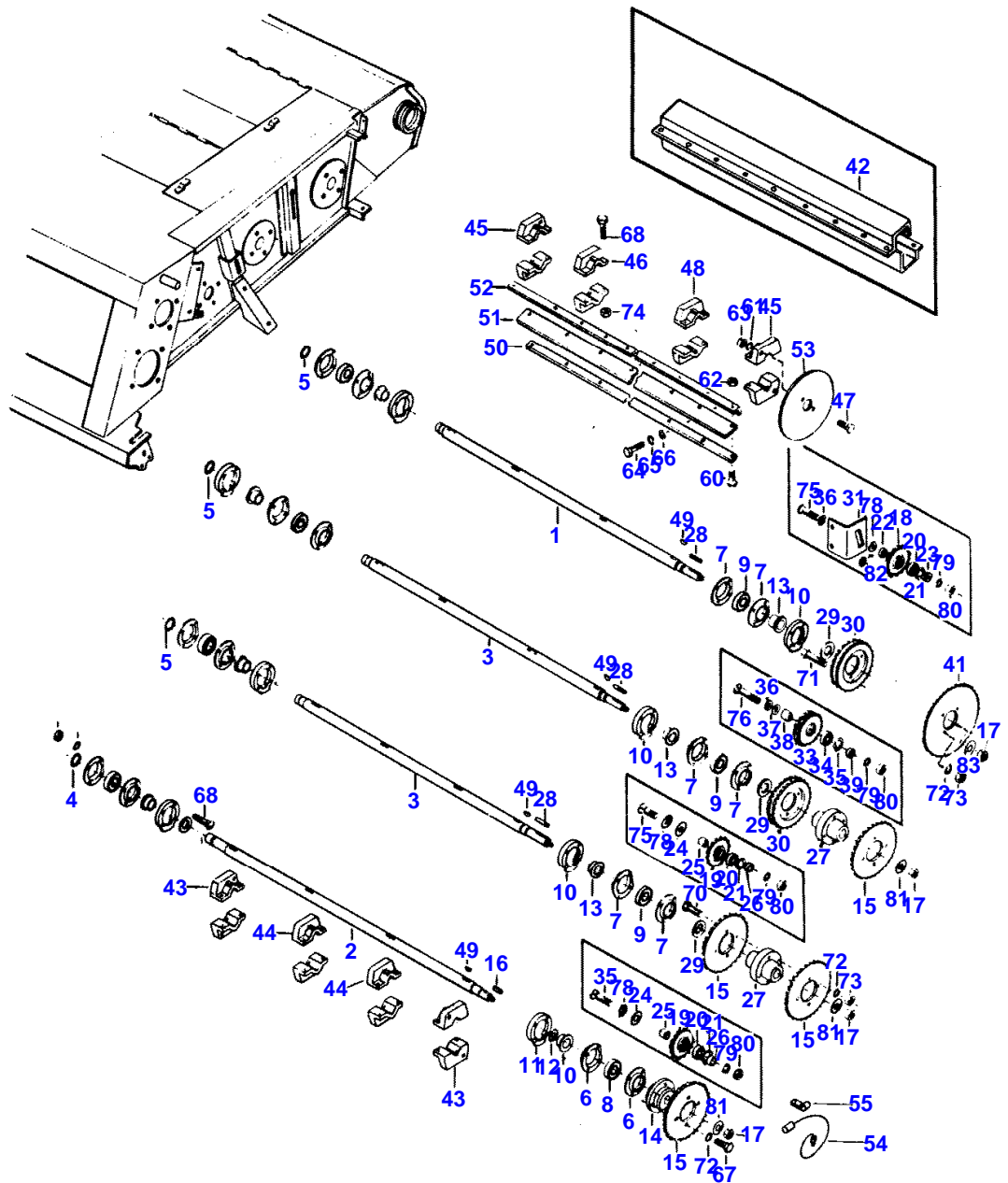
ELEVATOR, TOP SHAFT AND PADDLE - PADDLE

6

Item	Part Number	Qty	Description	Comments
	365417X1	AR	Bolt	
71	363905X1	AR	Bolt Unc	
72	354261X1	AR	Bolt Unc	
73	353434X1	AR	Lock Washer	3/8"
74	355566X1	AR	Nut Unc	
75	366573X1	AR	Locknut	
76	354280X1	AR	Bolt Unc	
77	353439X1	AR	Lock Washer	1/2"
78	375098X1	AR	Nut Unc	
79	358663X1	AR	Nut	
80	353443X1	AR	Washer	1"
81	355647X1	AR	Nut Unf	
			(A)	
			Repairs and replaces 259039M1, 10 EACH OF	
			364964X1, 353434X1,	
			353756X1, AND	
			355566X1	

ELEVATOR SHAFTS, DRIVES AND PADDLES

1696 004-1



1ST PRINT

651 558 M92 (ISSUE 1) 3/89

MASSEY FERGUSON

MF 850/855 COMBINES, |-> 169627544 - 651558EA

651558EA

ELEVATOR SHAFT, DRIVE AND PADDLES - PADDLE

9

Item	Part Number	Qty	Description	Comments
				PADDLE
1	284877M1	1	Shaft	Length 58-3/16"
2	258128M2	1	Shaft	
3	258129M2	2	Shaft	
4	831196M1	1	O Ring	1-5/16" I.D. X 1/8"
5	1001489M1	3	O Ring	1-1/8" I.D. X 1/8"
6	831781M1	4	Flange	
7	842453M1	12	Flange	
8	832087M1	2	Bearing	
9	831822M1	6	Bearing	
10	271984M1	8	Spacer	
11	271982M1	2	Spacer	1-19/32 X 2 X 1-3/64"
12	361388X1	2	Washer	1-21/32 X 2 X 1/32"
13	258132M1	6	Spacer	
14	258698M1	1	Hub	
15	368224X1	4	Sprocket	Number of teeth/spines 30, 3/4"
16	010738X	1	Key	3/8" X 1-1/2"
17	273253M1	4	Nut	
18	269876M1	1	Sprocket	Number of teeth/spines 17
19	274424M1	2	Pinion	Number of teeth/spines 18, 3/4"
20	833735M1	3	Bearing	
21	353231X1	3	Circlip	1-47/64 O.D. X 1/16"
22	266276M1	1	Spacer	41/64 X 1 X 1/8"
23	272254M1	1	Spacer	41/64 X 1-1/8 X 1/4"
24	365318X1	AR	Shim	45/64 X 1-1/4 X 1/32"
25	258144M1	2	Bush	41/64 X 1-1/8 X 21/32"
26	263392M1	2	Spacer	21/32 X 1-1/8 X 11/32"
27	258654M1	2	Hub	
28	375335X1	3	Key Door	5/16" X 3"
29	361288X1	AR	Washer	1-13/32 X 1-5/8 X 1/32"
30	258655M2	2	Pinion	Number of teeth/spines 30, 5/8"
31	284860M2	1	Bracket	
33	259030M1	1	Pinion	Number of teeth/spines 19, 5/8"
34	842947M1	1	Bearing Assy	
35	355978X1	1	Circlip	
36	831779M1	1	Washer	21/32" X 1-5/16 X 5/64"
37	368933X1	AR	Washer	21/32 X 1-1/2 X 3/16"
38	259043M1	1	Spacer	41/64 X 1-1/4 X 1-1/32"
39	263392M1	1	Spacer	21/32 X 1-1/8 X 11/32"
41		1	Sprocket	See Page - Reference Number 22
42	259005M3	8	Box	
43	274603M3	4	Collar	1-3/4"
44	274604M2	4	Clamp	Not serviced, order 274603M3
45	259216M3	12	Collar	1-1/2"
46	259217M2	12	Collar	Not serviced, order 259216M3
47	369694X1	AR	Bolt Unc	
49	355484X1	16	Key Door	1/4 X 2-1/8"
50	259000M3	8	Angle	(A)
51	293054M1	8	Paddle	(A)
52	259001M2	8	Angle	(A)
53	271989M1		Plate	
54	249305M1	1	Switch Diagram	
55	369883X1	1	Clip	
60	363905X1	AR	Bolt Unc	
61	353434X1	AR	Lock Washer	3/8"
62	366573X1	AR	Locknut	
63	355566X1	AR	Nut Unc	
64	366088X1	AR	Screw	
65	367053X1	AR	Washer	7/16"
66	365671X1	AR	Washer	15/32 X 1 X 3/16"

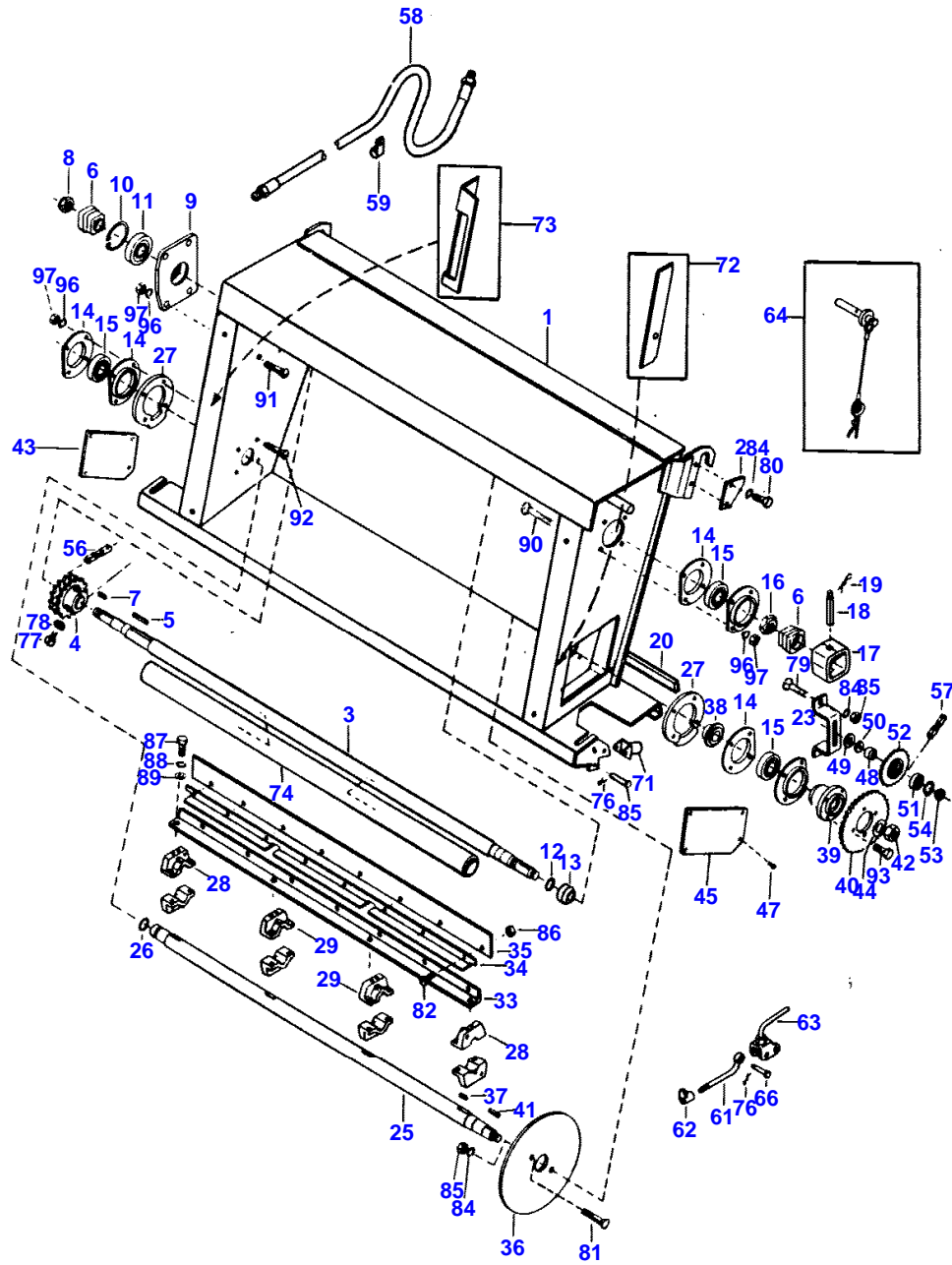
MASSEY FERGUSON**MF 850/855 COMBINES, |-> 169627544 - 651558EA****651558EA****ELEVATOR SHAFT, DRIVE AND PADDLES - PADDLE****9**

Item	Part Number	Qty	Description	Comments
67	353723X1	AR	Screw Unc	
68	364975X1	AR	Bolt	
70	354653X1	AR	Screw	
71	354663X1	AR	Screw	
72	353439X1	AR	Lock Washer	1/2"
73	375098X1	AR	Nut Unc	
74	366608X1	AR	Nut	
75	364986X1	AR	Bolt Unc	
76	363464X1	AR	Bolt Unc	
	364987X1	AR	Bolt Unc	
78	368933X1	AR	Washer	21/32 X 1-1/2 X 3/16"
79	353433X1	AR	Lock Washer	5/8"
80	375099X1	AR	Nut Unc	
81	134407M1	AR	Washer	
82	010916X	AR	Washer	41/64 X 1-1/4 X 1/32"
83	134408M1	AR	Washer	(A) QUANTITY OF 10 REQUIRED FOR DIFFICULT FEEDING COND ITIONS ON GRAIN ELEVATOR

10

ELEVATOR EXTENSION

1636 005-1



*1ST PRINT

651 558 M92 (ISSUE 1) 3/89

Buy Now



Our support email:

ebooklibonline@outlook.com