

Page Title	Page Number
PADDLE ELEVATOR TO TABLE DRIVE	2
PADDLE ELEVATOR SHAFTS AND DRIVES	5
PADDLE ELEVATOR, TABLE TO CYLINDER	9
PADDLE ELEVATOR EXTENSION AND DRIVE (MF860/865)	13
PADDLE ELEVATOR EXTENSION AND DRIVE	17
SLAT ELEVATOR AND EXTENSION (WITH 3 ROW CONVEYOR)	21
SLAT ELEVATOR AND EXTENSION (WITH 2 ROW CONVEYOR, CALIFORNIA)	25
SLAT ELEVATOR TOP SHAFT AND DRIVE (ELEVATOR WITH 3 ROW)	29
SLAT ELEVATOR TOP SHAFT AND DRIVE (WITH 2 ROW CONVEYOR,	33
ELEVATOR CLUTCH (ELECTROMAGNETIC THROW-OUT)	37
ELEVATOR DRIVE SHIELDS (RUB, TRK.)	38
CYLINDER HOUSING	41
CYLINDER DRIVE (ELECTRIC VARIABLE SPEED)	42
CYLINDER DRIVE	46
ELECTRIC ACTUATOR	50
CYLINDER RASP BAR (HIGH INERTIA, 860/865 COMBINE)	53
CYLINDER RASP BAR (HIGH INERTIA, 860E/865E COMBINE)	54
CYLINDER (SPIKE TOOTH)	57
CONCAVE (RASP BAR)	58
CONCAVE (SPIKED TOOTH)	62
CONVERSION (RASP BAR CYLINDER TO SPIKE TOOTH)	65
CONVERSION (SPIKE TOOTH CYLINDER TO RASP BAR)	66
CONCAVE CONTROL	69
STONE TRAP, FEED PLATE	73
FRONT BEATER	74
REAR BEATER	77
WALKER BODY	78
STRAW WALKERS (860, 860E, 865, 865E)	82
STRAW WALKER PAN (860, 860E, 865, AND 865E)	85
STRAW WALKER AND RETURNS ELEVATOR DRIVE	89
GRAIN PAN AND SHAKER SHAFT	90
FANNING MILL	93
SHAKER SHOE AND SIEVES	97
SHAKER SHOE CONVERSION	98
SHAKER SHOE CONVERSION	101
SCREENS AND SIEVES	102
REAR HOOD, CURTAIN AND DEFLECTOR (MF 860 AND 860E)	105
REAR HOOD, CURTAIN AND DEFLECTOR (MF 865 AND 865E)	106
CASCADE SEPARATOR (SHEET METAL)	109
CASCADE SEPARATOR (UPPER AND LOWER AUGERS)	110
CASCADE SEPARATOR	114
CASCADE SEPARATOR (ELEVATOR HOUSING)	117
CASCADE SEPARATOR (CYLINDER)	118
CASCADE SEPARATOR (HARNES AND SENSORS)	121
STRAW SPREADER (MF 860 COMBINE)	122
STRAW SPREADER DRIVE (MF 860 COMBINE)	125
STRAW SPREADER (MF 865 AND 865E)	126
STRAW SPREADER (MF 865 AND 865E)	129
STRAW CHOPPER DRIVE (GRAIN, RICE AND SOYBEAN)	130
STRAW CHOPPER DRIVE (CORN) (860, 865)	134
STRAW CHOPPER	138
STRAW CHOPPER SHIELD AND CURTAIN	142
LEFT HAND DRIVE	145
LEFT HAND DRIVE IDLERS (FANNING MILL)	146
GRAIN TANK	149
GRAIN TANK EXTENSION	150
GRAIN ELEVATOR	153
GRAIN ELEVATOR DRIVE	157
GRAIN TANK UNLOADER BOTTOM	161
GRAIN TANK UNLOADER TOP	165
GRAIN TANK UNLOADER DRIVE	169
RETURNS ELEVATOR	173
RETURNS ELEVATOR CARRIERS	174
LEFT SIDE SHIELDS (RUBBER, TRACK)	178
RIGHT SIDE SHIELDS (860, 860E, 865, 865E)	181
MAIN FRAME	185
FRONT AXLE, SHAFTS AND COUPLINGS (4-SPEED TRANSMISSION)	186
FRONT AXLE, SHAFTS AND COUPLINGS (HYDROSTATIC TRANSMISSION)	189

TABLE OF CONTENT

FRONT WHEELS (GRAIN, RICE)	190
MAIN DRIVE CONTROL	193
TRACTION DRIVE (HYDROSTATIC TRANSMISSION)	194
VARIABLE SPEED TRACTION DRIVE (4 SPEED TRANSMISSION)	198
TRACTION CLUTCH (4 SPEED TRANSMISSION)	202
GEAR SHIFT (4 SPEED TRANSMISSION)	206
GEAR SHIFT (HYDROSTATIC TRANSMISSION)	209
STEERING PEDESTAL	210
STEERING WHEEL COLUMN AND CONTROL UNIT	213
TRANSMISSION (4 SPEED WITH 2 PINION PLANETARY)	214
CONSTANT MESH TRANSMISSION	221
CONSTANT MESH TRANSMISSION (HYDROSTATIC, EUROPE ONLY)	225
HYDROSTATIC CONTROLS	230
HYDROSTATIC PRESSURE RELEASE CONTROLS	233
HYDROSTATIC PUMP DRIVE AND MOTOR (SUNSTRAND PUMP AND MOTOR)	234
HYDROSTATIC PUMP (SUNSTRAND)	237
PUMP DRIVE MOTOR (SUNSTRAND)	241
HYDROSTATIC COOLING SYSTEM	242
OIL COOLER FAN AND DRIVE	245
FINAL DRIVE (RUBBER RIGHT, RUBBER LEFT)	246
PARKING BRAKE CONTROLS (N.A. OR EUR.)	250
TURNING BRAKES	253
BRAKE CYLINDER, BRAKE ASSEMBLY	257
TRACK, FRAME AND AXLE (RICE RIGHT, TRACK LEFT)	258
TRACK, IDLER AND ROLLERS (RICE LEFT, TRACK RIGHT)	261
"A" FRAME AND REAR WHEELS	265
FIXED REAR AXLE	269
ADJUSTABLE REAR AXLE	270
REAR WHEEL DRIVE ADJUSTABLE AXLE	273
REAR WHEEL DRIVE HYDRAULICS	277
HYDRAULIC MOTOR	281
PLANETARY GEAR BOX	282
SELECTOR VALVE	285
OPERATOR'S PLATFORM AND LADDER	286
CONTROL BOX (4 SPEED, HYDRO. STAT)	289
ELECTRICAL HARNESS (COMBINE) (860, 865) (860E, 865E)	290
HARNESS AND SWITCHES (CONTROL CONSOLE)	293
HARNESS, INSTRUMENTS AND SWITCHES (CAB)	297
GRAIN LOSS MONITOR	298
ENGINE AND BATTERY WIRING (AT6-354.4CC)	301
ENGINE AND BATTERY WIRING (AV8-540 DIESEL)	302
ALTERNATOR	306
STARTER (AT6-354.4CC)	309
SOLENOID (AT6 - 354.4CC)	313
SOLENOID (AT6 - 354.4CC)	317
STARTER (AT6 - 354.4CC)	314
STARTER AND SOLENOID (AV8-540 DIESEL)	318
SOLENOID (AV8 - 540 DIESEL)	321
SOLENOID (AV8 - 540 DIESEL)	326
STARTER AND SOLENOID (AV8 - 540 DIESEL)	322
LIGHTING	329
LIGHTING (ROAD LIGHTS, EUROPE ONLY)	330
FLOODLIGHTS	334
LIGHTS	337
TAIL LIGHT AND WARNING LAMP	341
ELECTRIC ETHER STARTING KIT	342
SEAT (VICTOR)	345
SEAT (SEARS)	346
ENGINE COVER	349
ENGINE COVER EXTENSION	350
ROTARY AIR INTAKE AND DRIVE (WITH CHAFF EXTRACTOR)	354
FUEL TANK, LINES, SUPPORTS AND TOOL BOX	358
HYDRAULIC CONTROLS (4) OR (HYDRO.)	361
MAIN HYDRAULIC CONTROL VALVE (3 SPOOL)	362
HYDROSTATIC REEL DRIVE	365
HYDRAULIC PRESSURE AND RETURN LINES	369
HYDRAULIC PUMP	370
CONTROL VALVE (TABLE HEIGHT)	373
CONTROL VALVE (TABLE HEIGHT, REEL FORE AND AFT)	377
.....	---

TABLE OF CONTENT

HYDRAULIC TANK (STD. W/RL DRIVE) (HYD. W/RL DRIVE)	378
REEL LIFT HYDRAULICS	381
HYDRAULIC CONTROL REEL FORE AND AFT	382
TABLE LIFT HYDRAULICS	385
TABLE LIFT CYLINDER (GR/RICE RUB.) (RICE TRK.)	389
FLOATATION ACCUMULATOR	390
TANK UNLOADER CONTROLS	394
TANK UNLOADER HYDRAULICS	397
UNLOADER CYLINDER	398
VARIABLE SPEED HYDRAULICS (4 SPEED)	401
VARIABLE SPEED CYLINDER	402
STEERING HYDRAULICS (MF 860 AND MF 865)	405
STEERING HYDRAULICS (MF 860E AND 865E)	406
STEERING CYLINDER	409
RELIEF VALVE	410
HYDRAULIC PUMP DRIVE AND ENGINE SUPPORTS	413
GREASE HARNESS	414
REAR MOTOR HOUSING	417
BELTS	421
CHAINS (PADDLE ELEVATOR)	422
CHAINS (PADDLE ELEVATOR)	425
CHAINS (SLAT ELEVATOR) (W/O EXT., WITH EXT.)	426
CHAINS	430
CONVEYOR CHAIN	434
ADAPTING PART FOR CORN HEAD (RIGHT HAND DRIVE)	438
EMBLEMS AND LABELS	441
EMBLEMS AND LABELS (FRENCH)	442
ACCESSORIES (POLYURETHANE PAINT)	445
CYLINDER BLOCK (AT6-354,4CC)	446
CRANKSHAFT, FLYWHEEL, INSERTS (AT6-354, 4CC)	450
PISTONS, RINGS AND RODS	453
TIMING GEAR AND CAMSHAFT (AT6-354, 4CC)	454
CYLINDER HEAD COVER (AT6-354, 4CC)	457
CYLINDER HEAD (AT6-354, 4CC AND AT6-354, 4 DIESEL)	458
OIL PAN, FILTER AND PUMP	461
OIL COOLER AND FILTER (AT6-354, 4CC)	465
GASKET SETS (AT6-354, 4CC DIESEL)	466
WATER PUMP AND ATTACHING PARTS (AT6-354, 4CC)	469
MANIFOLDS AND TURBOCHARGER (AT6-354, 4CC)	470
INJECTION SYSTEM (AT6-354, 4CC)	474
INJECTION PUMP AND INJECTOR	477
TURBOCHARGER (AT6-354, 4CC)	478
FUEL FILTERS AND LINES (AT6-354, 4CC)	481
LIFT PUMP AND FUEL FILTER (AT6-354, 4CC)	482
RADIATOR AND HOSES (AT6-354, 4CC)	485
AIR INTAKE AND EXHAUST	486
AIR INTAKE AND EXHAUST	489
AIR INTAKE AND EXHAUST	529
AIR INTAKE AND EXHAUST	530
THROTTLE CONTROL, FUEL SHUT-OFF (AT6-354, 4CC)	490
CYLINDER BLOCK (AV8-540 DIESEL)	493
CRANKSHAFT FLYWHEEL AND BEARINGS (AV8-540 DIESEL)	497
CYLINDER HEAD AND VALVES (AV8-540 DIESEL)	498
CYLINDER HEAD COVER AND ROCKERSHAFT (AV8-540 DIESEL)	501
CAMSHAFT AND TIMING GEARS (AV8-540 DIESEL)	505
OIL PAN, PUMP AND COOLER (AV8-540 DIESEL)	506
OIL PAN (AV8-540 DIESEL)	510
LUBRICATION OIL FILTER (AV8-540 DIESEL)	513
ENGINE GASKET SETS (AV8-540 DIESEL)	514
WATER PUMP AND IDLER PULLEY (AV8-540 DIESEL)	517
THROTTLE CONTROL, FUEL SHUT-OFF (AV8-540 DIESEL)	518
FUEL INJECTION LINES (AV8-540 DIESEL)	521
FUEL FILTER AND INJECTION PUMP (AV8-540 DIESEL)	525
AUXILIARY DRIVE (AV8-540 DIESEL)	526
INTAKE AND EXHAUST MANIFOLDS (AV8-540 DIESEL)	533
RADIATOR AND HOSES (AV8-540 DIESEL)	534
RADIATOR FAN DRIVE (AV8-540 AND AT6-354, 4CC)	537
CAB (SHEET METAL, WINDOWS)	538
CAB (SEALING AND TRIM)	542
CAB (SEALING AND TRIM)	545

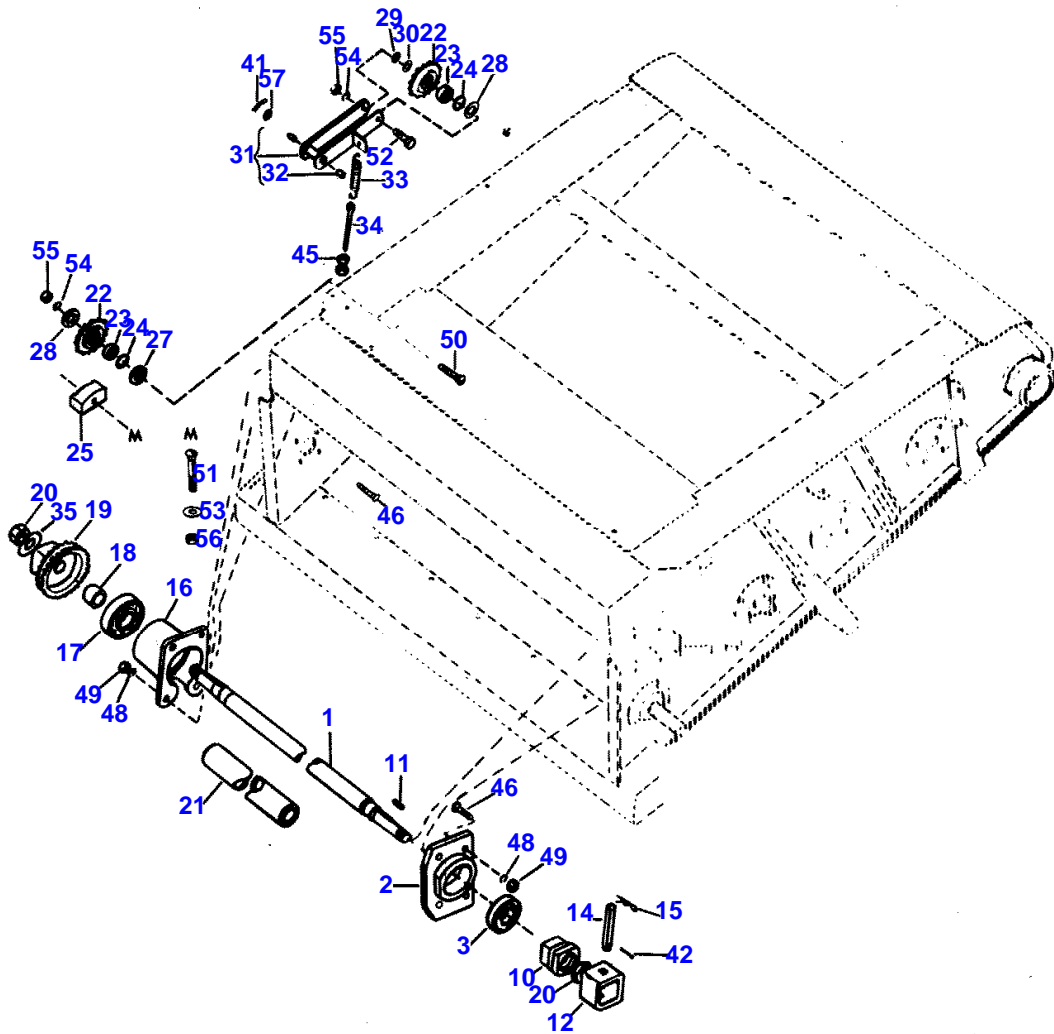
TABLE OF CONTENT

COMPRESSOR AND CONDENSOR	546
COMPRESSOR	549
AIR CONDITIONING AND LINES	550
PRESSURIZER	553
HEATER	554
WINDSHIELD WIPER	557

2

PADDLE ELEVATOR TO TABLE DRIVE

1746.001



1ST PRINT

651 559 M92 (ISSUE 1) 12/87

PADDLE ELEVATOR TO TABLE DRIVE

Item	Part Number	Qty	Description
1	274049M4	1	Shaft, Front
2	274050M2	1	Housing
3	842874M1	1	Bearing, Ball
10	249674M1	1	Coupler, Male
11	49378X	2	Key (5/16" Sq. x 1-1/4")
12	470040M1	1	Coupling (Female)
14	249675M2	1	Pin (5/8 x 4-5/16" Special)
15	1753018M1	1	Pin, Hair
16	272264M2	1	Housing
17	831783M1	1	Bearing, Ball
18	367463X1	1	Spacer (1 37/64 x 1-29/32 x 1-1/4")
19	273458M91	1	Sprocket Assy (20 Teeth, 3/4" Pitch, Double)
20	249677M1	2	Stake Nut (1" NF)
21	274070M1	1	Tube (2" I.D. x 57-7/8")
22	274424M1	2	Sprocket (3/4" Pitch - 18 Teeth)
23	833735M1	2	Bearing, Ball
24	353231X1	2	Ring, Int. Snap (1-47/64 O.D. x 1/16" Thk.)
25	293803M1	1	(A) Tensioner
27	273032M1	1	Spacer (41/64 x 1-1/8 x 51/64")
28	263392M1	2	Spacer (21/32 x 1-1/8 x 11/32")
29	365318X1	AR	Washer (45/64 x 1-1/4 x 1/32")
30	272250M1	1	Spacer, Bearing
31	273016M92	1	Arm Assembly
32	271644M1	2	Bushing (3/4 x 7/8 x 3/4")
33	214446M1	1	Spring, Tension
34	368243X1	1	Eyebolt (5/16 x 6" NC)
35	365676X1	1	Washer (1-1/32 x 1-3/4 x .132" Flat Special)
42	354078X1	AR	Pin (3/16 x 1-1/4" Cotter)
45	355565X1	AR	Nut (5/16" NC, Hex.)
46	364246X1	AR	Bolt (1/2 x 1-1/2" NC, Carr.)
48	353439X1	AR	Washer (1/2" Lock)
49	375098X1	AR	Nut (1/2" NC, Hex.)
50	363771X1	AR	Bolt (5/8 x 3" NC, Carr.)
51	364987X1	AR	Bolt (5/8 x 3-1/4" NC, Carr.)
52	354292X1	AR	Bolt (5/8 x 3-1/2" NC, Hex.)
53	355623X1	AR	Washer (11/16 x 1-3/4 x 1/8" Flat)
54	353433X1	AR	Washer (5/8" Lock)
55	375099X1	AR	Nut (5/8" NC, Hex.)
56	369067X1	AR	Nut (5/8" NC, Hex., Lock)
57	353762X1	AR	Washer (13/16 x 1-1/2 x 5/32" Flat)

 (A) - Used MF 860 Rice Track W/ Electric Clutch And 860E/865E W/ Dronningborg Header.

PADDLE ELEVATOR SHAFTS AND DRIVES

Item	Part Number	Qty	Description
1	273001M2	1	Shaft, Front (65-3/16")
2	273002M2	2	Shaft, Paddle (67-1/16")
3	284878M1	1	Shaft, Paddle (Top)(67-5/8")
4	831196M1	4	"O" Ring (1-5/16" I.D. x 1/8")
5	831791M1	16	Stud (5/8 x 3-1/4" NC-NF)
6	832087M1	8	Bearing, Ball
7	271984M1	8	Spacer (4 Sq. Holes)
8	271982M1	8	Spacer (1-19/32 x 2 x 1-3/64")
9	367445X1	2	Washer, Flat (1-21/32 x 2-1/8 x 5/32")
10	274603M3	16	Collar Half (1-3/4" Bore)
	274604M3	16	Collar, Half (Inner) (Order 274603M3)
11	273973M2	16	(A) Angle, Paddle
12	273972M3	16	(A) Strap, Paddle
13	271989M1	8	Plate, Drive
14	293033M1	16	(A) Blade, Paddle
15	272987M91	1	Sprocket Assembly (30 Teeth, 3/4" Pitch)
16	GH001303	1	Key (3/8 x 3/8 x 1-3/4")
17	272985M1	2	Hub, Sprocket
18	360119X1	2	Key (3/8" Sq. x 3-1/4")
19	368224X1	3	Sprocket (3/4" Pitch, 30 Teeth)
20	258655M2	2	Sprocket, Double (30 Teeth, 5/8" Pitch)
22		1	Slip Clutch (See Page 36)
23	273976M3	8	(B) Box, Paddle
31	259030M1	2	Sprocket, Double (19 Teeth, 5/8" Pitch)
32	842947M1	2	Bearing, Ball
33	355978X1	2	Ring, Retaining
34	368933X1	4	Washer (21/32 x 1-1/2 x 3/16")
35	274165M1	2	Spacer (41/64 x 1-1/4 x 1-1/8")
36	365318X1	AR	Washer (45/64 x 1-1/4 x 1/32")
37	263392M1	3	Spacer (21/32 x 1-1/8 x 11/32")
38	831779M1	1	Washer (21/32" Sq. Hole x 1-5/16 x 5/64")
39	258144M1	2	Spacer (41/64 x 1-1/8 x 21/32")
40	274424M1	2	Sprocket (3/4" Pitch - 18 Teeth)
41	833735M1	2	Bearing, Ball
42	353231X1	2	Ring, Int. Snap (1-47/64 O.D. x 1/16" Thk.)
43	355484X1	16	Key (1/4 x 2-1/8" Woodruff)
44	272247M1	1	Spacer, Bearing
45	134417M91	1	(C) Bracket Assembly
	284860M2	1	(D) Bracket
46	249305M1	1	Sensor
47	369883X1	1	Clip, Closed (Type "B")
48	273032M1	1	Spacer (41/64 x 1-1/8 x 51/64")
51	363905X1	AR	Bolt (3/8 x 1-1/4" NC, Carr.)
52	369694X1	AR	Bolt (3/8 x 2" NC, Plow)
53	353434X1	AR	Washer (3/8" Lock)
54	366573X1	AR	Nut (3/8" NC, Hex., Lock, W/Insert)
55	366088X1	AR	Bolt (7/16 x 1-3/4" NC, Hex.)
56	365671X1	AR	Washer (15/32 x 1 x 3/16" Flat)
57	367053X1	AR	Washer (7/16" Lock)(Special)
58	364975X1	AR	Bolt (1/2 x 1-3/4" NC, Carr.)
59	354653X1	AR	Bolt (1/2 x 2-3/4" NC, Hex.)
60	353439X1	AR	Washer (1/2" Lock)
61	375098X1	AR	Nut (1/2" NC, Hex.)
62	366608X1	AR	Nut (1/2" NC, Hex., Lock, W/Insert)
63	363464X1	AR	Bolt (5/8 x 2-3/4" NC, Carr.)
64	364987X1	AR	Bolt (5/8 x 3-1/4" NC, Carr.)
65	353433X1	AR	Washer (5/8" Lock)
66	375099X1	AR	Nut (5/8" NC, Hex.)
67	134407M1	AR	Washer, Flat
68	367486X1	AR	Nut (3/4" NC, Hex., Lock)
69	367939X1	AR	Washer (1-17/32 x 1-13/16 x 1/32")
70	134408M1	1	Washer, Flat
71	364988X1	1	Bolt (5/8 x 3-1/2" NC, Carr.)
72	365102X1	1	Washer (21/32" Sq. x 1-5/16 x 3/16")

(A) - Quantity Of (8) Required For Grain
Machines, (10) Required For Europe Grain
Machines.

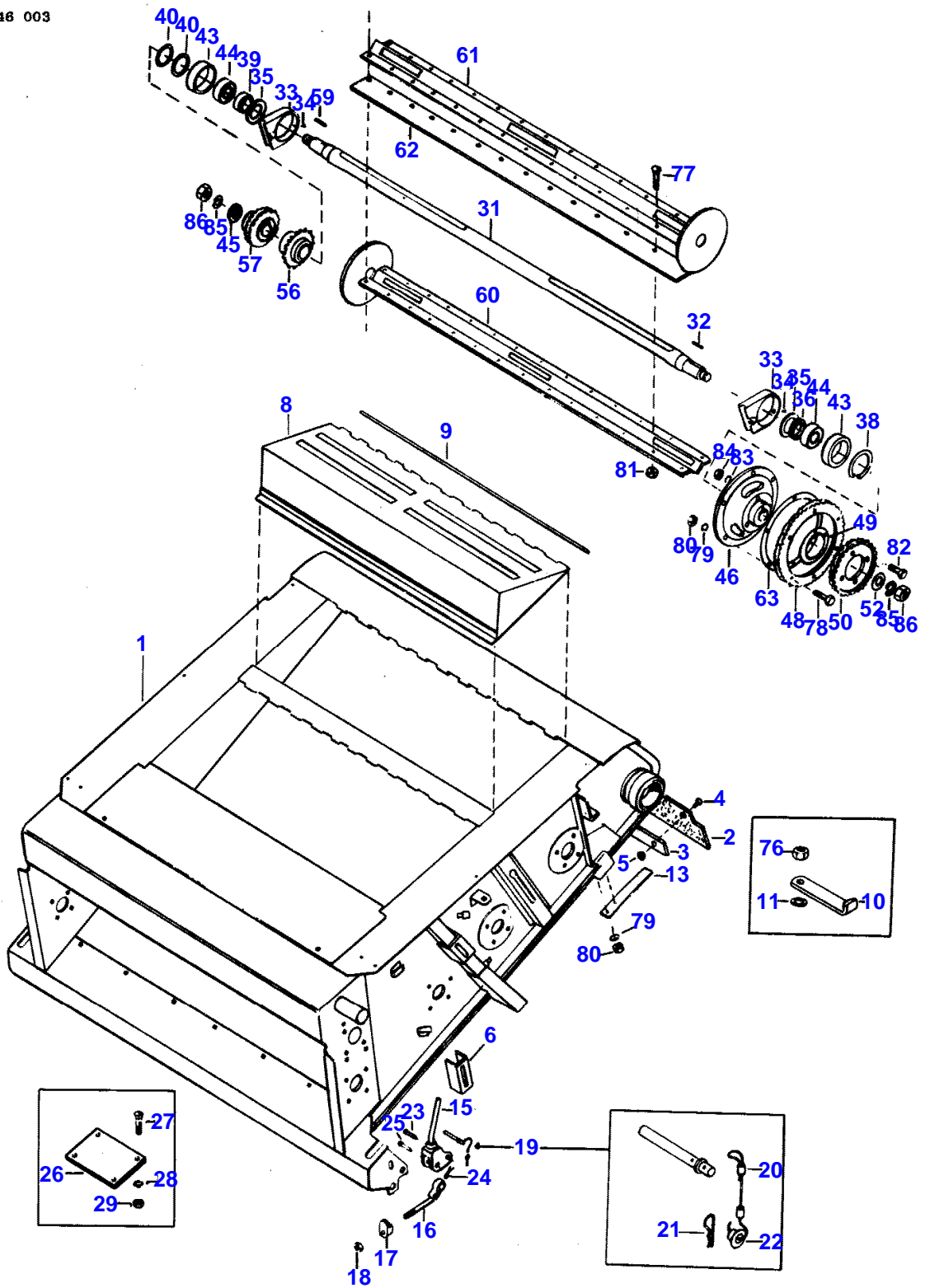
(B) - For Weedy And Vine Growth.

(C) - Used Combine Serial Number
1746020362 And Up.

Item	Part Number	Qty	Description
			(D) - Used Prior To Combine Serial Number 1746020362.

PADDLE ELEVATOR, TABLE TO CYLINDER

1746 003



1ST PRINT

651 559 M92 (ISSUE 1) 12/87

PADDLE ELEVATOR, TABLE TO CYLINDER

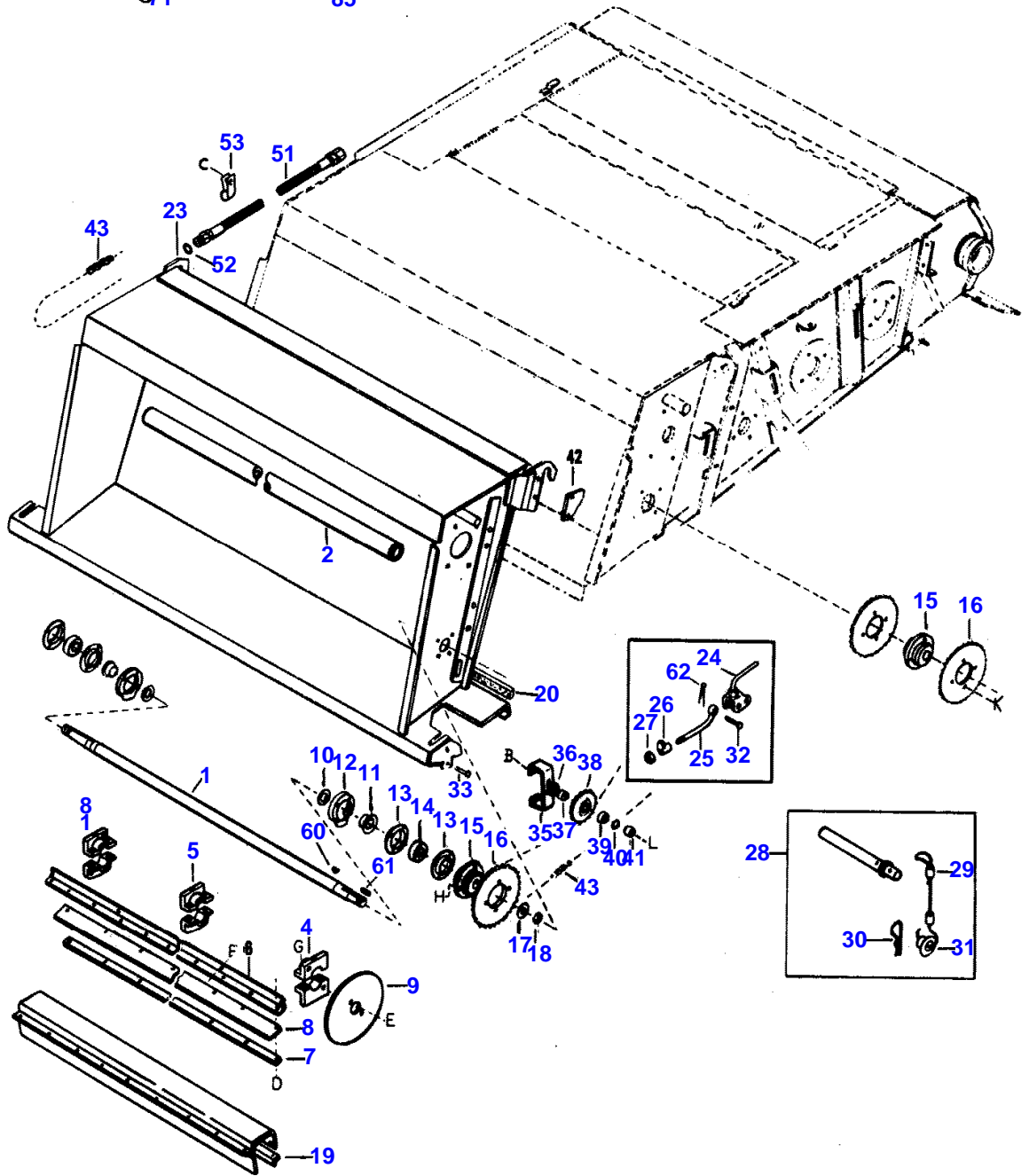
Item	Part Number	Qty	Description
1	293490M92	1	Elevator Assembly
2	270022M3	1	Strip, Rub
3	278691M1	1	Strap, Rub Strip Retainer
4	364943X1	10	Bolt (1/4 x 3/4" NC, Carr.)
5	367480X1	10	Nut (1/4" NC, Hex. Lock)
6	258659M1	1	Bracket, Table Elevator
8	271974M93	2	Door Assembly
9	367428X1	2	Rod, Hinge (1/4 x 43-7/8")
10	273742M1	4	Handle, Housing
11	239221M1	4	Washer (5/8 x 3/8 x 1/16")
13	278703M1	3	Support, Elevator
15	260130M92	2	Lever Assembly
16	260133M3	2	Eyebolt (7/8" NC, Thread)
17	260134M2	2	Latch, Elevator to Table
18	358663X1	2	Nut (7/8" NC, Hex., Lock)
19	260138M93	2	Pin Assembly
20	260140M1	2	Ferrule, Copper
21	195414M1	1	Pin (1/32 x 1-27/64" Hair Cotter)
22	252798M1	1	Eyelet, Pin
23	195358M1	2	Pin (5/8 x 1-27/32" Clevis)
24	354078X1	2	Pin (3/16 x 1-1/4" Cotter)
25	368281X1	2	Pin (5/8 x 23/32" Clevis)
26	273903M1	1	(A) Plate, Cover (4 x 6-1/8 x 1/16")
27	364224X1	8	(A) Bolt (1/2 x 1-1/4" NC, Carr.)
28	353439X1	8	(A) Washer (1/2" Lock)
29	375098X1	8	(A) Nut (1/2" NC, Hex.)
31	272984M2	1	Shaft, Top (74-17/32" Long)
32	49920X	1	Key (1/2 x 3/8 x 2")
33	273084M1	2	Support, Bearing
34	366268X1	2	Grommet
35	274211M1	2	Washer, Special(2 x 3-9/16 x .132")
36	369090X1	1	Spacer (2-1/32 x 2-1/4 x 1/8")
38	355994X1	1	Ring, Int. Retaining (7/64" Thk.)
39	369089X1	1	Spacer (2-1/32 x 2-1/4 x 31/64")
40	367462X1	AR	Shim (.060")
	364434X1	AR	Shim (.030")
43	272263M1	2	Housing, Bearing
44	833741M1	2	Bearing, Ball
45	273990M1	1	Spacer (1-63/64 x 2-3/8 x 3/8")
46	274174M1	1	Hub, Sprocket
48	274173M1	1	Sprocket (62 Teeth, 3/4" Pitch, Double)
49	258651M1	AR	Shim (.030")
50	274175M1	1	Sprocket (36 Teeth, 5/8" Pitch, Double)
52	460107M1	2	Washer (1-1/16 x 2-1/4 x 1/4 Special)
56	273365M91	1	Sprocket (26 Teeth - 3/4" Pitch)
57	273501M91	1	Sprocket Assembly (38 Teeth - 1/2" Pitch)
59	368751X1	1	Key (1/2 x 3/8 x 2-7/8")
60	272256M92	1	Paddle Assembly
61	272236M92	1	Paddle Assembly
62	293100M1	2	Blade Paddle
63	258653M1	AR	Shim (.030")
76	832302M1	AR	Nut (5/16" NC, Lock)
77	364965X1	AR	Bolt (3/8 x 1-1/2" NC, Carr.)
78	354261X1	AR	Bolt (3/8 x 1-3/8" NC, Hex.)
79	353434X1	AR	Washer (3/8" Lock)
80	355566X1	AR	Nut (3/8" NC, Hex.)
81	366573X1	AR	Nut (3/8" NC, Hex., Lock, W/Insert)
82	354659X1	AR	Bolt (1/2 x 3-1/2" NC, Hex.)
83	353439X1	AR	Washer (1/2" Lock)
84	375098X1	AR	Nut (1/2" NC, Hex.)
85	353443X1	AR	Washer (1" Lock)
86	355647X1	AR	Nut (1" NF, Half Hex.)

(A) - Used MF 860 Rice Track W/ Electric Clutch And 860E/865E W/ Dronningborg Header.

PADDLE ELEVATOR EXTENSION AND DRIVE

1746 004

B	C	D	E	F	G	H	K	L
66	67	68	69	73	76	77	78	82
70	70	72	10	75	81	79	80	83
71		71		74	81	80	80	84
								85



1ST PRINT

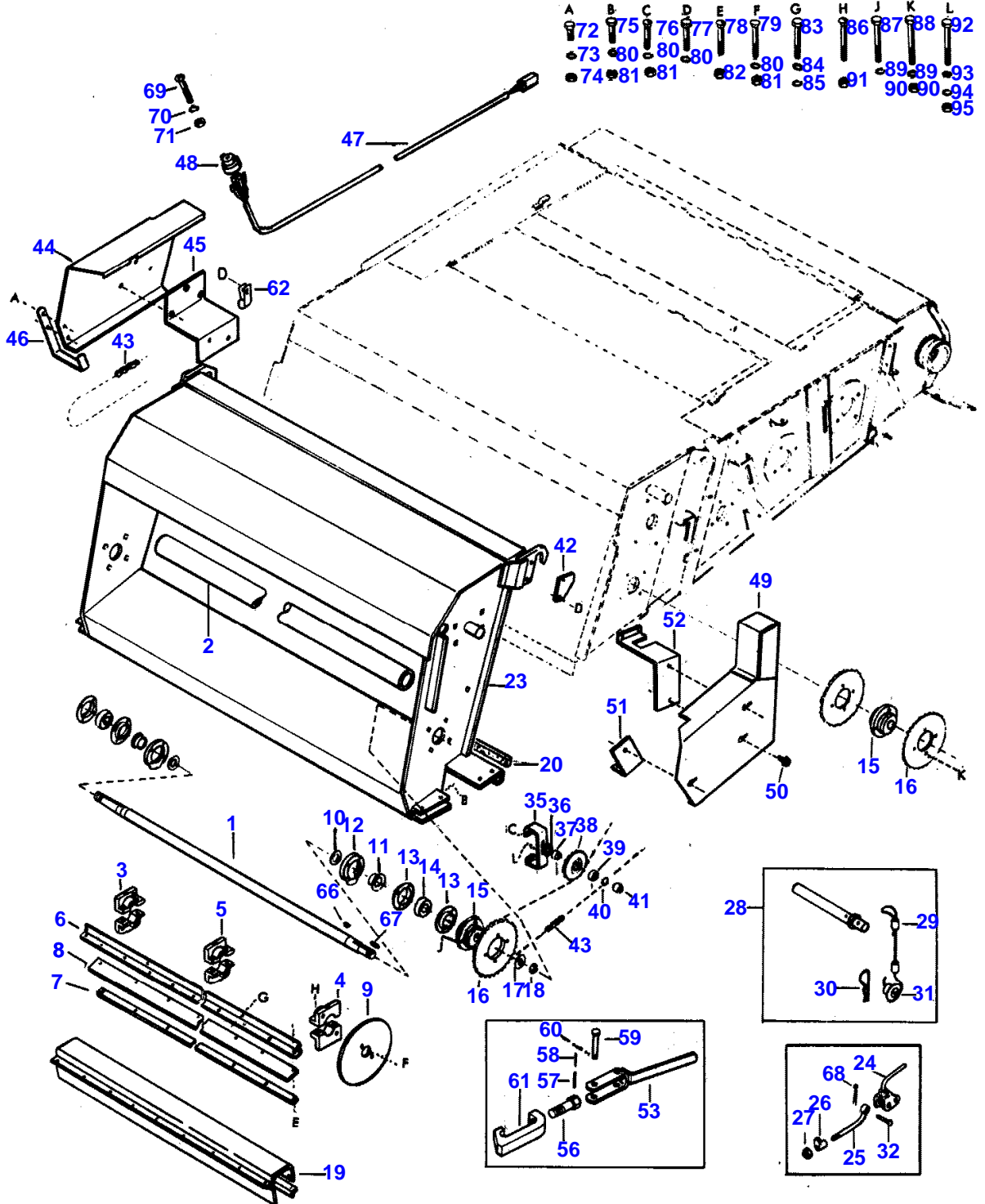
651 559 M92 (ISSUE 1) 12/87

Item	Part Number	Qty	Description
1	273001M2	1	Shaft, Front (65-3/16")
2	274070M1	1	Tube (2" I.D. x 57-7/8")
3	284800M1	2	Collar Half (Right)(1-3/4" Bore)
4	284801M1	2	Collar Half (Left)(1-3/4" Bore)
5	284802M1	4	Collar Half (Center)(1-3/4" Bore)
6	273973M2	4	Angle, Paddle
7	273972M3	4	Strap, Paddle
8	293033M1	4	Blade, Paddle
9	271989M1	2	Plate, Drive
10	367445X1	2	Washer, Flat (1-21/32 x 2-1/8 x 5/32")
11	271982M1	2	Spacer (1-19/32 x 2 x 1-3/64")
12	271984M1	2	Spacer (4 Sq. Holes)
13	831781M1	4	Flange, Bearing
14	832087M1	2	Bearing, Ball
15	274034M2	2	Hub, Extension Shaft and No. 1 Shaft
16	368224X1	3	Sprocket (3/4" Pitch, 30 Teeth)
17	134408M1	2	Washer, Flat
18	367486X1	1	Nut (3/4" NC, Hex., Lock)
19	273976M3	8	Box, Paddle
20	259714M2	1	Strip, Sealing
23	280441M92	1	Extension Assembly
24	260130M92	2	Lever Assembly
25	260133M3	2	Eyebolt (7/8" NC, Thread)
26	260134M2	2	Latch, Elevator to Table
27	358663X1	2	Nut (7/8" NC, Hex., Lock)
28	260138M93	2	Pin Assembly
29	260140M1	2	Ferrule, Copper
30	195414M1	1	Pin (1/32 x 1-27/64" Hair Cotter)
31	252798M1	1	Eyelet, Pin
32	195358M1	2	Pin (5/8 x 1-27/32" Clevis)
33	368281X1	2	Pin (5/8 x 23/32" Clevis)
35	274033M1	1	Bracket, Chain Idler
36	365318X1	AR	Washer (45/64 x 1-1/4 x 1/32")
37	258144M1	1	Spacer (41/64 x 1-1/8 x 21/32")
38	274424M1	1	Sprocket (3/4" Pitch - 18 Teeth)
39	833735M1	1	Bearing, Ball
40	353231X1	1	Ring, Int. Snap (1-47/64 O.D. x 1/16" Thk.)
41	263392M1	1	Spacer (21/32 x 1-1/8 x 11/32")
42	274318M1	2	Plate
43		1	Chain Assembly, Paddle Drive (See Pages 423-436)
51	293634M91	1	(A) Hose Assembly (3/4"-16 M. x 9/16"- 18 F. x 70-1/2")
52	831497M1	1	"O" Ring (41/64" I.D. x 5/64")
53	364200X1	1	Clip, Closed (Type "B")
60	355484X1	AR	Key (1/4 x 2-1/8" Woodruff)
01	GH001303	AR	Key (3/8 x 3/8 x 1-3/4")
62	354078X1	AR	Pin (3/16 x 1-1/4" Cotter)
66	364964X1	AR	Bolt (3/8 x 1" NC, Carr.)
67	353693X1	AR	Bolt (3/8 x 1-1/4" NC, Hex.)
68	363905X1	AR	Bolt (3/8 x 1-1/4" NC, Carr.)
69	369694X1	AR	Bolt (3/8 x 2" NC, Plow)
70	353434X1	AR	Washer (3/8" Lock)
71	355566X1	AR	Nut (3/8" NC, Hex.)
72	366573X1	AR	Nut (3/8" NC, Hex., Lock, W/Insert)
73	366088X1	AR	Bolt (7/16 x 1-3/4" NC, Hex.)
74	365671X1	AR	Washer (15/32 x 1 x 3/16" Flat)
75	367053X1	AR	Washer (7/16" Lock)(Special)
76	364975X1	AR	Bolt (1/2 x 1-3/4" NC, Carr.)
77	354280X1	AR	Bolt (1/2 x 2" NC, Hex.)
78	354651X1	AR	Bolt (1/2 x 2-1/2" NC, Hex.)
79	353439X1	AR	Washer (1/2" Lock)
80	375098X1	AR	Nut (1/2" NC, Hex.)
81	366608X1	AR	Nut (1/2" NC, Hex., Lock, W/Insert)
82	363464X1	AR	Bolt (5/8 x 2-3/4" NC, Carr.)
83	365102X1	AR	Washer (21/32" Sq. x 1-5/16 x 3/16")
84	353433X1	AR	Washer (5/8" Lock)
85	375099X1	AR	Nut (5/8" NC, Hex.)

(A) - Track Rice And Grain.

PADDLE ELEVATOR EXTENSION AND DRIVE

1746 005



1ST PRINT

651 559 M92 (ISSUE 1) 12/87

Buy Now



Our support email:

ebooklibonline@outlook.com