

Page Title	Page Number
PADDLE ELEVATOR TO TABLE DRIVE	2
PADDLE ELEVATOR SHAFTS AND DRIVES	5
PADDLE ELEVATOR, TABLE TO CYLINDER	9
PADDLE ELEVATOR EXTENSION AND DRIVE - MF 860/865	13
PADDLE ELEVATOR EXTENSION AND DRIVE - MF 860E/865E W/DRONNINGBORG HEADER	17
SLAT ELEVATOR AND EXTENSION - WITH 3 ROW CONVEYOR	21
SLAT ELEVATOR AND EXTENSION - WITH 2 ROW CONVEYOR, CALIFORNIA SPECIAL ONLY	25
SLAT ELEVATOR TOP SHAFT AND DRIVE - ELEVATOR WITH 3 ROW CONVEYOR	29
SLAT ELEVATOR TOP SHAFT AND DRIVE - WITH 2 ROW CONVEYOR, CALIFORNIA SPECIAL ONLY	33
ELEVATOR CLUTCH - ELECTROMAGNETIC THROW-OUT	37
ELEVATOR DRIVE SHIELDS	38
CYLINDER HOUSING	41
CYLINDER DRIVE - ELECTRIC VARIABLE SPEED	42
CYLINDER DRIVE	46
ELECTRIC ACTUATOR	50
CYLINDER RASP BAR - HIGH INERTIA, 860/865 COMBINE	53
CYLINDER RASP BAR - HIGH INERTIA, 860E/865E COMBINE	54
CYLINDER (SPIKE TOOTH)	57
CONCAVE (RASP BAR)	58
CONCAVE (SPIKED TOOTH)	62
CONVERSION - RASP BAR CYLINDER TO SPIKE TOOTH	65
CONVERSION - SPIKE TOOTH CYLINDER TO RASP BAR	66
CONCAVE CONTROL	69
STONE TRAP, FEED PLATE	73
FRONT BEATER	74
REAR BEATER	77
WALKER BODY	78
STRAW WALKERS	82
STRAW WALKER PAN	85
STRAW WALKER AND RETURNS ELEVATOR DRIVE	89
GRAIN PAN AND SHAKER SHAFT	90
FANNING MILL	93
SHAKER SHOE AND SIEVES	97
SHAKER SHOE CONVERSION	98
SHAKER SHOE CONVERSION	101
SCREENS AND SIEVES - SHAKER SHOE FRONT	102
REAR HOOD, CURTAIN AND DEFLECTOR - MF 860 AND 860E	105
REAR HOOD, CURTAIN AND DEFLECTOR - MF 865 AND 865E	106
CASCADE SEPARATOR - SHEET METAL	109
CASCADE SEPARATOR - UPPER AND LOWER AUGERS	110
CASCADE SEPARATOR	114
CASCADE SEPARATOR - ELEVATOR HOUSING	117
CASCADE SEPARATOR - CYLINDER	118
CASCADE SEPARATOR - HARNESS AND SENSORS	121
STRAW SPREADER - MF 860 COMBINE	122
STRAW SPREADER DRIVE - MF 860 COMBINE	125
STRAW SPREADER - MF 865 AND 865E	126
STRAW SPREADER DRIVE - MF 865 AND 865E	129
STRAW CHOPPER DRIVE - GRAIN, RICE AND SOYBEAN	130
STRAW CHOPPER DRIVE - CORN	134
STRAW CHOPPER	138
STRAW CHOPPER SHIELD AND CURTAIN	142
LEFT HAND DRIVE	145
LEFT HAND DRIVE IDLERS - FANNING MILL	146
GRAIN TANK	149
GRAIN TANK EXTENSION	150
GRAIN ELEVATOR	153
GRAIN ELEVATOR DRIVE	157
GRAIN TANK UNLOADER BOTTOM	161
GRAIN TANK UNLOADER TOP	165
GRAIN TANK UNLOADER DRIVE	169
RETURNS ELEVATOR	173
RETURNS ELEVATOR CARRIERS	174
LEFT SIDE SHIELDS	178
RIGHT SIDE SHIELDS	181
MAIN FRAME	185

TABLE OF CONTENT

FRONT AXLE, SHAFTS AND COUPLINGS - 4 SPEED TRANSMISSION	186
FRONT AXLE, SHAFTS AND COUPLINGS - HYDROSTATIC TRANSMISSION	189
FRONT WHEELS	190
MAIN DRIVE CONTROL	193
TRACTION DRIVE - HYDROSTATIC TRANSMISSION	194
VARIABLE SPEED TRACTION DRIVE - 4 SPEED TRANSMISSION	198
TRACTION CLUTCH - 4 SPEED TRANSMISSION	202
GEAR SHIFT - 4 SPEED TRANSMISSION	206
GEAR SHIFT - HYDROSTATIC TRANSMISSION	209
STEERING PEDESTAL	210
STEERING WHEEL COLUMN AND CONTROL UNIT	213
TRANSMISSION - 4 SPEED WITH 2 PINION PLANETARY	214
CONSTANT MESH TRANSMISSION - HYDROSTATIC, NORTH AMERICA ONLY	221
CONSTANT MESH TRANSMISSION - HYDROSTATIC, EUROPE ONLY	225
HYDROSTATIC CONTROLS	230
HYDROSTATIC PRESSURE RELEASE CONTROLS	233
HYDROSTATIC PUMP DRIVE AND MOTOR - SUNSTRAND PUMP AND MOTOR	234
HYDROSTATIC PUMP - SUNSTRAND	237
PUMP DRIVE MOTOR - SUNSTRAND	241
HYDROSTATIC COOLING SYSTEM	242
OIL COOLER FAN AND DRIVE	245
FINAL DRIVE	246
PARKING BRAKE CONTROLS	250
TURNING BRAKES	253
BRAKE CYLINDER, BRAKE ASSEMBLY	257
TRACK, FRAME AND AXLE	258
TRACK, IDLER AND ROLLER	261
A FRAME AND REAR WHEELS	265
FIXED REAR AXLE	269
ADJUSTABLE REAR AXLE	270
REAR WHEEL DRIVE ADJUSTABLE AXLE	273
REAR WHEEL DRIVE HYDRAULICS	277
HYDRAULIC MOTOR	281
PLANETARY GEAR BOX	282
SELECTOR VALVE	285
OPERATOR'S PLATFORM AND LADDER	286
CONTROL BOX	289
ELECTRICAL HARNESS - COMBINE	290
HARNESS AND SWITCHES	293
HARNESS, INSTRUMENTS AND SWITCHES - CAB	297
GRAIN LOSS MONITOR	298
ENGINE AND BATTERY WIRING - AT6-354.4CC	301
ENGINE AND BATTERY WIRING - AV8-540 DIESEL	302
ALTERNATOR	306
STARTER - AT6-354.4CC	309
SOLENOID - AT6-354.4CC	313
STARTER - AT6-354.4CC	314
SOLENOID - AT6-354.4CC	317
STARTER AND SOLENOID - AV8-540 DIESEL	318
SOLENOID - AV8-540 DIESEL	321
STARTER AND SOLENOID - AV8-540 DIESEL	322
SOLENOID - AV8-540 DIESEL	326
LIGHTING	329
LIGHTING - ROAD LIGHTS, EUROPE ONLY	330
FLOODLIGHTS	334
LIGHTS	337
TAIL LIGHT AND WARNING LAMP	341
ELECTRIC ETHER STARTING KIT	342
SEAT - VICTOR	345
SEAT - SEARS	346
ENGINE COVER	349
ENGINE COVER EXTENSION	350
ROTARY AIR INTAKE AND DRIVE - WITH CHAFF EXTRACTOR	354
FUEL TANK, LINES, SUPPORTS AND TOOL BOX	358
HYDRAULIC CONTROLS	361
MAIN HYDRAULIC CONTROL VALVE - 3 SPOOL	362
HYDROSTATIC REEL DRIVE	365
HYDRAULIC PRESSURE AND RETURN LINES	369

TABLE OF CONTENT

HYDRAULIC PUMP	370
CONTROL VALVE - TABLE HEIGHT	373
CONTROL VALVE - TABLE HEIGHT, REEL FORE AND AFT	377
HYDRAULIC TANK	378
REEL LIFT HYDRAULICS	381
HYDRAULIC CONTROL REEL FORE AND AFT - FLOTATION ACCUMULATOR, EUROPE ONLY	382
TABLE LIFT HYDRAULICS	385
TABLE LIFT CYLINDER	389
FLOTATION ACCUMULATOR - .7 LITER ACCUMULATOR	390
TANK UNLOADER CONTROLS	394
TANK UNLOADER HYDRAULICS	397
UNLOADER CYLINDER	398
VARIABLE SPEED HYDRAULICS - 4 SPEED	401
VARIABLE SPEED CYLINDER	402
STEERING HYDRAULICS - MF 860 AND MF 865	405
STEERING HYDRAULICS - MF 860E AND 865E	406
STEERING CYLINDER	409
RELIEF VALVE	410
HYDRAULIC PUMP DRIVE AND ENGINE SUPPORTS	413
GREASE HARNESS	414
REAR MOTOR HOUSING	417
BELTS	421
CHAINS - PADDLE ELEVATOR	422
CHAINS - PADDLE ELEVATOR	425
CHAINS - SLAT ELEVATOR	426
CHAINS	430
CONVEYOR CHAIN	434
ADAPTING PART FOR CORN HEAD - RIGHT HAND DRIVE	438
EMBLEMS AND LABELS	441
EMBLEMS AND LABELS - FRENCH	442
ACCESSORIES - POLYURETHANE PAINT	445
CYLINDER BLOCK - AT6-354.4CC	446
CRANKSHAFT, FLYWHEEL, INSERTS - AT6-354.4CC	450
PISTONS, RINGS AND RODS	453
TIMING GEAR AND CAMSHAFT - AT6-354.4CC	454
CYLINDER HEAD COVER	457
CYLINDER HEAD - AT6-354.4CC AND AT6-354.4 DIESEL	458
OIL PAN, FILTER AND PUMP	461
OIL COOLER AND FILTER - AT6-354.4CC	465
GASKET SETS - AT6-354.4CC	466
WATER PUMP AND ATTACHING PARTS - AT6-354.4CC	469
MANIFOLDS AND TURBOCHARGER - AT6-354.4CC	470
INJECTION SYSTEM - AT6-354.4CC	474
INJECTION PUMP AND INJECTOR	477
TURBOCHARGER - AT6-354.4CC	478
FUEL FILTERS AND LINES - AT6-354.4CC	481
LIFT PUMP AND FUEL FILTER	482
RADIATOR AND HOSES - AT6-354.4CC	485
AIR INTAKE AND EXHAUST - AT6-354.4CC DIESEL	486
AIR INTAKE AND EXHAUST - AT6-354.4CC	489
THROTTLE CONTROL, FUEL SHUT-OFF - AT6-354.4CC	490
CYLINDER BLOCK - AV8-540 DIESEL	493
CRANKSHAFT FLYWHEEL AND BEARINGS - AV8-540 DIESEL	497
CYLINDER HEAD AND VALVES - AV8-540 DIESEL	498
CYLINDER HEAD COVER AND ROCKERSHAFT - AV8-540 DIESEL	501
CAMSHAFT AND TIMING GEARS - AV8-540 DIESEL	505
OIL PAN, PUMP AND COOLER - AV8-540 DIESEL	506
OIL PUMP - AV8-540 DIESEL	510
LUBRICATION OIL FILTER - AV8-540 DIESEL	513
ENGINE GASKET SETS - AV8-540 DIESEL	514
WATER PUMP AND IDLER PULLEY - AV8-540 DIESEL	517
THROTTLE CONTROL, FUEL SHUT-OFF - AV8-540 DIESEL	518
FUEL INJECTION LINES - AV8-540 DIESEL	521
FUEL FILTER AND INJECTION PUMP - AV8-540 DIESEL	525
AUXILIARY DRIVE - AV8-540 DIESEL	526
AIR INTAKE AND EXHAUST - AV8-540 DIESEL	529
AIR INTAKE AND EXHAUST - AV8-540 DIESEL	530
INTAKE AND EXHAUST MANIFOLDS - AV8-540 DIESEL	533

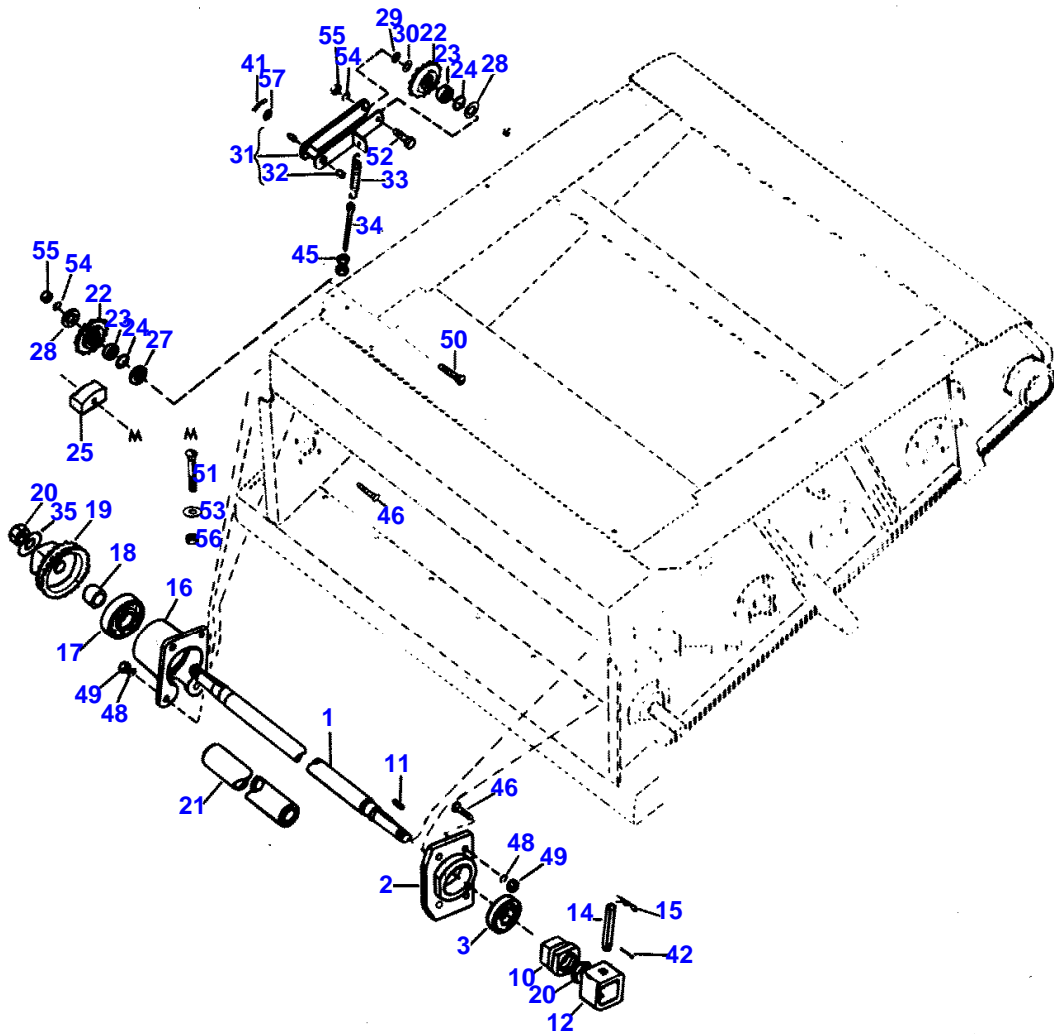
TABLE OF CONTENT

RADIATOR AND HOSES - AV8-540 DIESEL	534
RADIATOR FAN DRIVE - AV8-540 AND AT6-354.4CC	537
CAB - SHEET METAL, WINDOWS	538
CAB - SEALING AND TRIM	542
CAB - SEALING AND TRIM	545
COMPRESSOR AND CONDENSER	546
COMPRESSOR	549
AIR CONDITIONING AND LINES	550
PRESSURIZER	553
HEATER	554
WINDSHIELD WIPER	557

2

PADDLE ELEVATOR TO TABLE DRIVE

1746.001



1ST PRINT

651 559 M92 (ISSUE 1) 12/87

MASSEY FERGUSON

MF 860/865 COMBINES, |-> 174619115 - 651559EA

651559EA

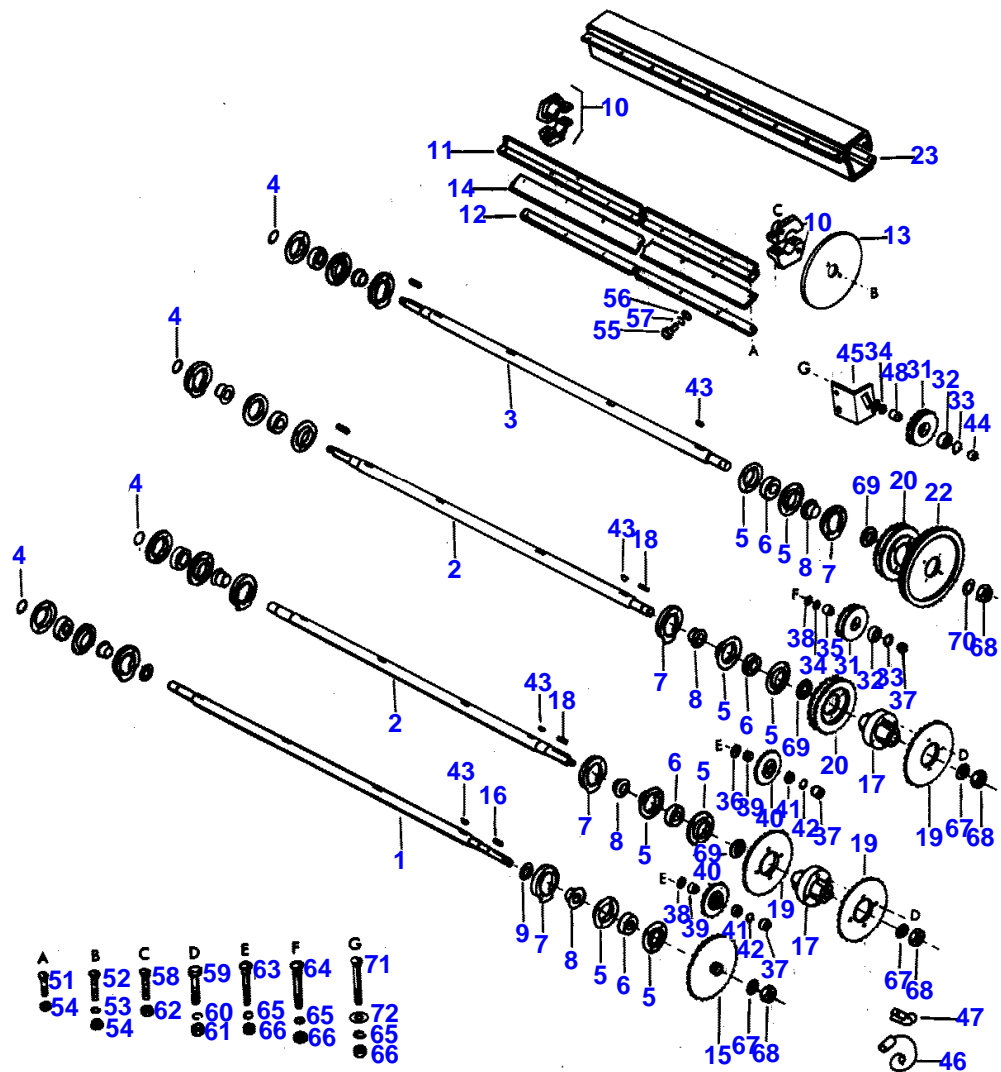
PADDLE ELEVATOR TO TABLE DRIVE

2

Item	Part Number	Qty	Description	Comments
1	274049M4	1	Shaft	
2	274050M2	1	Housing	
3	842874M1	1	Bearing	
10	249674M1	1	Hub	
11	049378X	2	Key	5/16" X 1-1/4"
12	470040M1	1	Coupling	
14	249675M2	1	Shaft	5/8 X 4-5/16"
15	1753018M1	1	Pin	
16	272264M2	1	Housing	
17	831783M1	1	Bearing	
18	367463X1	1	Bush	1-37/64 X 1-29/32 X 1-1/4"
19	273458M91	1	Sprocket	Number of teeth/spines 20 3/4"
20	249677M1	2	Nut	1"
21	274070M1	1	Tube	2" I.D. X 57-7/8"
22	274424M1	2	Pinion	Number of teeth/spines 18 3/4"
23	833735M1	2	Bearing	
24	353231X1	2	Circlip	Thickness 1-47/64 O.D. X 1/16"
25	293803M1	1	Tensioner	(A)
27	273032M1	1	Shim	41/64 X 1-1/8 X 51/64"
28	263392M1	2	Spacer	21/32 X 1-1/8 X 11/32"
29	365318X1	X	Shim	45/64 X 1-1/4 X 1/32"
30	272250M1	1	Bush	
31	273016M92	1	Tensioner	
32	271644M1	2	Bush	3/4 X 7/8 X 3/4"
33	214446M1	1	Spring	
34	368243X1	1	Bolt	
35	365676X1	1	Washer	1-1/32 X 1-3/4 X .132"
41	354068X1	X	Pin	5/32 X 1-1/4"
42	354078X1	X	Pin	3/16 X 1-1/4"
45	355565X1	X	Nut Unc	
46	364246X1	X	Bolt	
48	353439X1	X	Lock Washer	1/2"
49	375098X1	X	Nut Unc	
50	363771X1	X	Bolt Unc	
51	364987X1	X	Bolt Unc	
52	354292X1	X	Bolt Unc	
53	355623X1	X	Washer	11/16 X 1-3/4 X 1/8"
54	353433X1	X	Lock Washer	5/8"
55	375099X1	X	Nut Unc	
56	369067X1	X	Nut	
57	353762X1	AR	Washer	13/16 X 1-1/2 X 5/32" (A) USED MF 860 RICE TRACK W/ELECTRIC CLUTCH AND 860E/ 865E W/DRONNINGBORG HEADER.

PADDLE ELEVATOR SHAFTS AND DRIVES

1746 002



1ST PRINT

651 559 M92 (ISSUE 1) 12/87

MASSEY FERGUSON

MF 860/865 COMBINES, |-> 174619115 - 651559EA

651559EA

PADDLE ELEVATOR SHAFTS AND DRIVES

5

Item	Part Number	Qty	Description	Comments
1	273001M2	1	Shaft	65-3/16"
2	273002M2	2	Shaft	67-1/16"
3	284878M1	1	Shaft	Top 67-5/8"
4	831196M1	4	O Ring	1-5/16" X 1/8"
5	831781M1	16	Flange	
6	832087M1	8	Bearing	
7	271984M1	8	Spacer	
8	271982M1	8	Spacer	1-19/32 X 2 X 1-3/64"
9	367445X1	2	Washer	1-21/32 X 2-1/8 X 5/32"
10	274603M3	16	Collar	1-3/4"
	274604M3	16	Collar	Not serviced, order 274603M3
11	273973M2	16	Angle	(A)
12	273972M3	16	Angle	(A)
13	271989M1	8	Plate	
14	293033M1	16	Paddle	(A)
15	272987M91	1	Sprocket	Number of teeth/spines 30 3/4"
16	GH001303	1	Key	3/8 X 3/8 X 1-3/4"
17	272985M1	2	Hub	
18	360119X1	2	Key	3/8" X 3-1/4"
19	368224X1	3	Sprocket	Number of teeth/spines 30 3/4"
20	258655M2	2	Pinion	Number of teeth/spines 30 5/8"
22		1	Clutch	See Page - Reference Number 37
23	273976M3	8	Shield	(B)
31	259030M1	2	Pinion	Number of teeth/spines 19 5/8"
32	842947M1	2	Bearing Assy	
33	355978X1	2	Circlip	
34	368933X1	4	Washer	21/32 X 1-1/2 X 3/16"
35	274165M1	2	Spacer	41/64 X 1-1/4 X 1-1/8"
36	365318X1	X	Shim	45/64 X 1-1/4 X 1/32"
37	263392M1	3	Spacer	21/32 X 1-1/8 X 11/32"
38	831779M1	1	Washer	21/32" X 1-5/16 X 5/64"
39	258144M1	2	Bush	41/64 X 1-1/8 X 21/32"
40	274424M1	2	Pinion	Number of teeth/spines 18 3/4"
41	833735M1	2	Bearing	
42	353231X1	2	Circlip	Thickness 1-47/64 O.D. X 1/16"
43	355484X1	16	Key Door	1/4 X 2-1/8"
44	272247M1	1	Spacer	
45	134417M91	1	Bracket	(C)
	284860M2	1	Bracket	(D)
46	249305M1	1	Switch Diagram	
47	369883X1	1	Clip	
48	273032M1	1	Shim	41/64 X 1-1/8 X 51/64"
51	363905X1	X	Bolt Unc	
52	369694X1	X	Bolt Unc	
53	353434X1	X	Lock Washer	3/8"
54	366573X1	X	Locknut	
55	366088X1	X	Screw	
56	365671X1	X	Washer	15/32 X 1 X 3/16"
57	367053X1	X	Washer	7/16"
58	364975X1	X	Bolt	
59	354653X1	X	Screw	
60	353439X1	X	Lock Washer	1/2"
61	375098X1	X	Nut Unc	
62	366608X1	X	Nut	

MASSEY FERGUSON

MF 860/865 COMBINES, |-> 174619115 - 651559EA

651559EA

PADDLE ELEVATOR SHAFTS AND DRIVES

5

Item	Part Number	Qty	Description	Comments
63	363464X1	X	Bolt Unc	
64	364987X1	X	Bolt Unc	
65	353433X1	X	Lock Washer	5/8"
66	375099X1	X	Nut Unc	
67	134407M1	X	Washer	
68	367486X1	X	Nut	
69	367939X1	X	Washer	1-17/32 X 1-13/16 X 1/32"
70	134408M1	1	Washer	
71	364988X1	1	Bolt Unc	
72	365102X1	1	Washer	21/32" X 1-5/16 X 3/16"

(A)
QUANTITY OF (8) REQUIRED FOR GRAIN MACHINES, (10) REQUIRED FOR
EUROPE GRAIN MACHINES.

(B)
FOR WEEDY AND VINE GROWTH.

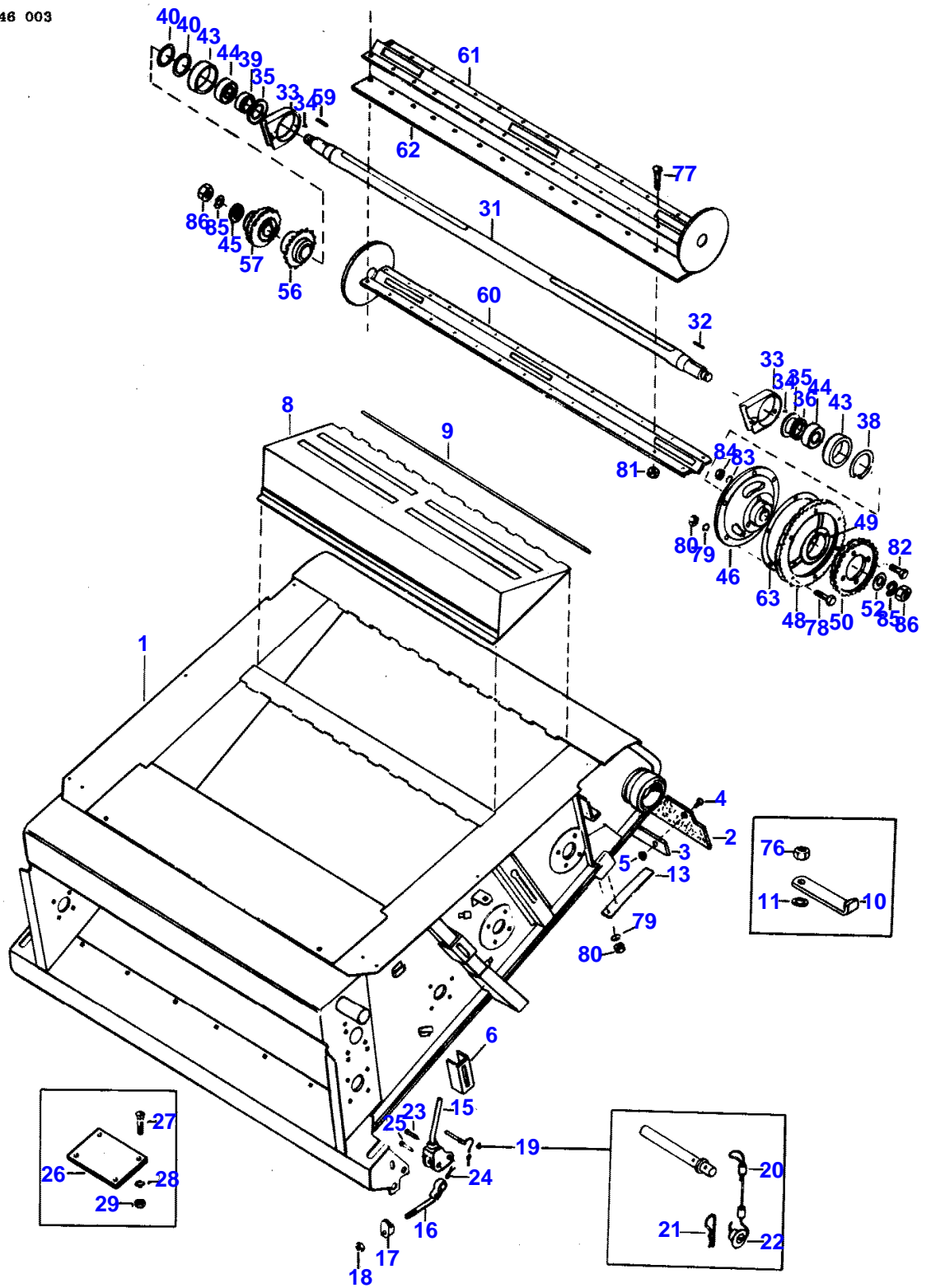
(C)
USED COMBINE SERIAL NUMBER 1746020362 AND UP

(D)
USED PRIOR TO COMBINE SERIAL NUMBER 1746020362.

PADDLE ELEVATOR, TABLE TO CYLINDER

9

1746 003



1ST PRINT

651 559 M92 (ISSUE 1) 12/87

MASSEY FERGUSON

MF 860/865 COMBINES, |-> 174619115 - 651559EA

651559EA

PADDLE ELEVATOR, TABLE TO CYLINDER

9

Item	Part Number	Qty	Description	Comments
1	293490M92	1	Elevator	
2	270022M3	1	Strip	
3	278691M1	1	Strap	
4	364943X1	10	Bolt	
5	367480X1	10	Nut Unc	
6	258659M1	1	Bearer	
8	271974M93	2	Gate	
9	367428X1	2	Stem	1/4 X 43-7/8"
10	273742M1	4	Handle	
11	239221M1	4	Washer	5/8 X 3/8 X 1/16"
13	278703M1	3	Support	
15	260130M92	2	Lever	
16	260133M3	2	Bolt	
17	260134M2	2	Tie	
18	358663X1	2	Nut	
19	260138M93	2	Clevis Pin	
20	260140M1	2	Cowl	
21	195414M1	1	Hair Pin	1/32 X 1-27/64"
22	252798M1	1	Eyelet	
23	195358M1	2	Pin	5/8 X 1-27/32"
24	354078X1	2	Pin	3/16 X 1-1/4"
25	368281X1	2	Clevis Pin	5/8 X 23/32"
26	273903M1	1	Plate	(A) 4 X 6-1/8 X 1/16"
27	364224X1	8	Bolt Unc	(A)
28	353439X1	8	Lock Washer	1/2" (A)
29	375098X1	8	Nut Unc	(A)
31	272984M2	1	Shaft	Length 74-17/32" Top
32	049920X	1	Key	1/2 X 3/8 X 2"
33	273084M1	2	Bearing Carrier	
34	366268X1	2	Grommet	
35	274211M1	2	Washer	2 X 3-9/16 X .132"
36	369090X1	1	Spacer	2-1/32 X 2-1/4 X 1/8"
38	355994X1	1	Ring	Thickness 7/64"
39	369089X1	1	Spacer	2-1/32 X 2-1/4 X 31/64"
40	367462X1	X	Shim	.060"
	364434X1	X	Shim	.030"
43	272263M1	2	Housing	
44	833741M1	2	Bearing	
45	273990M1	1	Spacer	1-63/64 X 2-3/8 X 3/8"
46	274174M1	1	Hub	
48	274173M1	1	Pinion	Number of teeth/spines 62 3/4"
49	258651M1	X	Shim	.030"
50	274175M1	1	Pinion	Number of teeth/spines 36 5/8"
52	460107M1	2	Washer	1-1/16 X 2-1/4 X 1/4"
56	273365M91	1	Sprocket	Number of teeth/spines 26 3/4"
57	273501M91	1	Pinion	Number of teeth/spines 38 1/2"
59	368751X1	1	Key	1/2 X 3/8 X 2-7/8"
60	272256M92	1	Drum	
61	272236M92	1	Drum	
62	293100M1	2	Blade	
63	258653M1	X	Shim	.030"
76	832302M1	X	Nut	
77	364965X1	X	Bolt Unc	
78	354261X1	X	Bolt Unc	
79	353434X1	X	Lock Washer	3/8"
80	355566X1	X	Nut Unc	
81	366573X1	X	Locknut	
82	354659X1	X	Bolt Unc	

MASSEY FERGUSON

MF 860/865 COMBINES, |-> 174619115 - 651559EA

651559EA

PADDLE ELEVATOR, TABLE TO CYLINDER

9

Item	Part Number	Qty	Description	Comments
83	353439X1	X	Lock Washer	1/2"
84	375098X1	X	Nut Unc	
85	353443X1	X	Washer	1"
86	355647X1	X	Nut Unf	

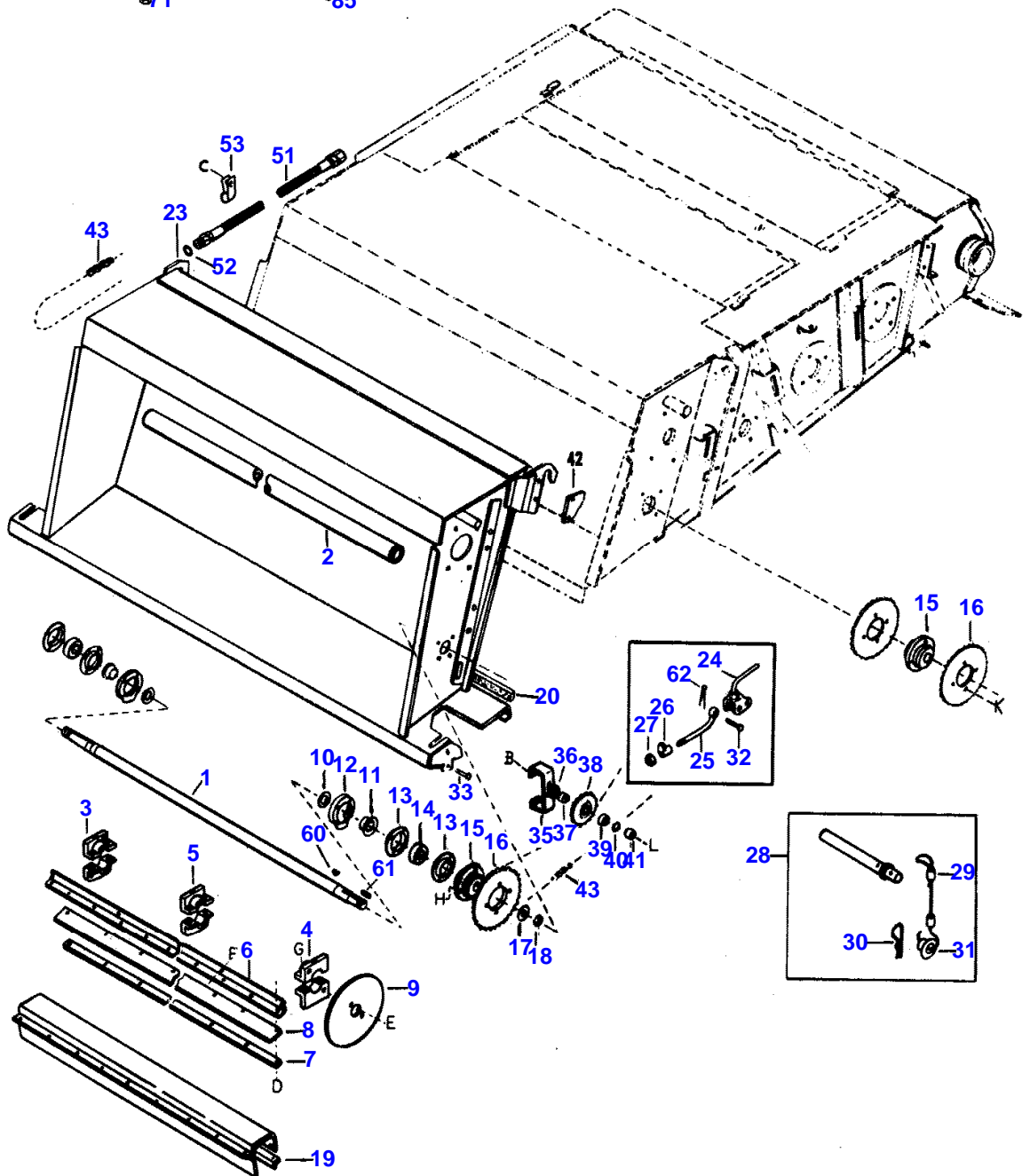
(A)

USED MF 860 RICE TRACK W/ELECTRIC CLUTCH AND 860E/ 865E
W/DRONNINGBORG HEADER.

PADDLE ELEVATOR EXTENSION AND DRIVE

1746 004

B	C	D	E	F	G	H	K	L
66	67	68	69	73	76	77	78	82
70	70	72	10	75	81	79	80	83
71			71	74	81	80	80	84
								85



1ST PRINT

651 559 M92 (ISSUE 1) 12/87

MASSEY FERGUSON

MF 860/865 COMBINES, |-> 174619115 - 651559EA

651559EA

PADDLE ELEVATOR EXTENSION AND DRIVE - MF 860/865

13

Item	Part Number	Qty	Description	Comments
				MF 860/865
1	273001M2	1	Shaft	65-3/16"
2	274070M1	1	Tube	2" I.D. X 57-7/8"
3	284800M1	2	Collar	Right Hand 1-3/4"
4	284801M1	2	Collar	Left Hand 1-3/4"
5	284802M1	4	Collar	1-3/4"
6	273973M2	4	Angle	
7	273972M3	4	Angle	
8	293033M1	4	Paddle	
9	271989M1	2	Plate	
10	367445X1	2	Washer	1-21/32 X 2-1/8 X 5/32"
11	271982M1	2	Spacer	1-19/32 X 2 X 1-3/64"
12	271984M1	2	Spacer	
13	831781M1	4	Flange	
14	832087M1	2	Bearing	
15	274034M2	2	Hub	
16	368224X1	3	Sprocket	Number of teeth/spines 30 3/4"
17	134408M1	2	Washer	
18	367486X1	1	Nut	
19	273976M3	8	Shield	
20	259714M2	1	Band	
23	280441M92	1	Extension	
24	260130M92	2	Lever	
25	260133M3	2	Bolt	
26	260134M2	2	Tie	
27	358663X1	2	Nut	
28	260138M93	2	Clevis Pin	
29	260140M1	2	Cowl	
30	195414M1	1	Hair Pin	1/32 X 1-27/64"
31	252798M1	1	Eyelet	
32	195358M1	2	Pin	5/8 X 1-27/32"
33	368281X1	2	Clevis Pin	5/8 X 23/32"
35	274033M1	1	Bearer	
36	365318X1	X	Shim	45/64 X 1-1/4 X 1/32"
37	258144M1	1	Bush	41/64 X 1-1/8 X 21/32"
38	274424M1	1	Pinion	Number of teeth/spines 18 3/4"
39	833735M1	1	Bearing	
40	353231X1	1	Circlip	Thickness 1-47/64 O.D. X 1/16"
41	263392M1	1	Spacer	21/32 X 1-1/8 X 11/32"
42	274318M1	2	Plate	
43		1	Chain	See Page - Reference Number 422-434
51	293634M91	1	Hose	3/4" - 16 X 9/16" - 18 X 70-1/2" (A)
52	831497M1	1	O Ring	41/64" I.D. X 5/64"
53	364200X1	1	Tie	
60	355484X1	X	Key Door	1/4 X 2-1/8"
61	GH001303	X	Key	3/8 X 3/8 X 1-3/4"
62	354078X1	X	Pin	3/16 X 1-1/4"
66	364964X1	X	Bolt Unc	
67	353693X1	X	Screw Unc	
68	363905X1	X	Bolt Unc	
69	369694X1	X	Bolt Unc	
70	353434X1	X	Lock Washer	3/8"
71	355566X1	X	Nut Unc	
72	366573X1	X	Locknut	
73	366088X1	X	Screw	
74	365671X1	X	Washer	15/32 X 1 X 3/16"
75	367053X1	X	Washer	7/16"
76	364975X1	X	Bolt	
77	354280X1	X	Bolt Unc	

Buy Now



Our support email:

ebooklibonline@outlook.com