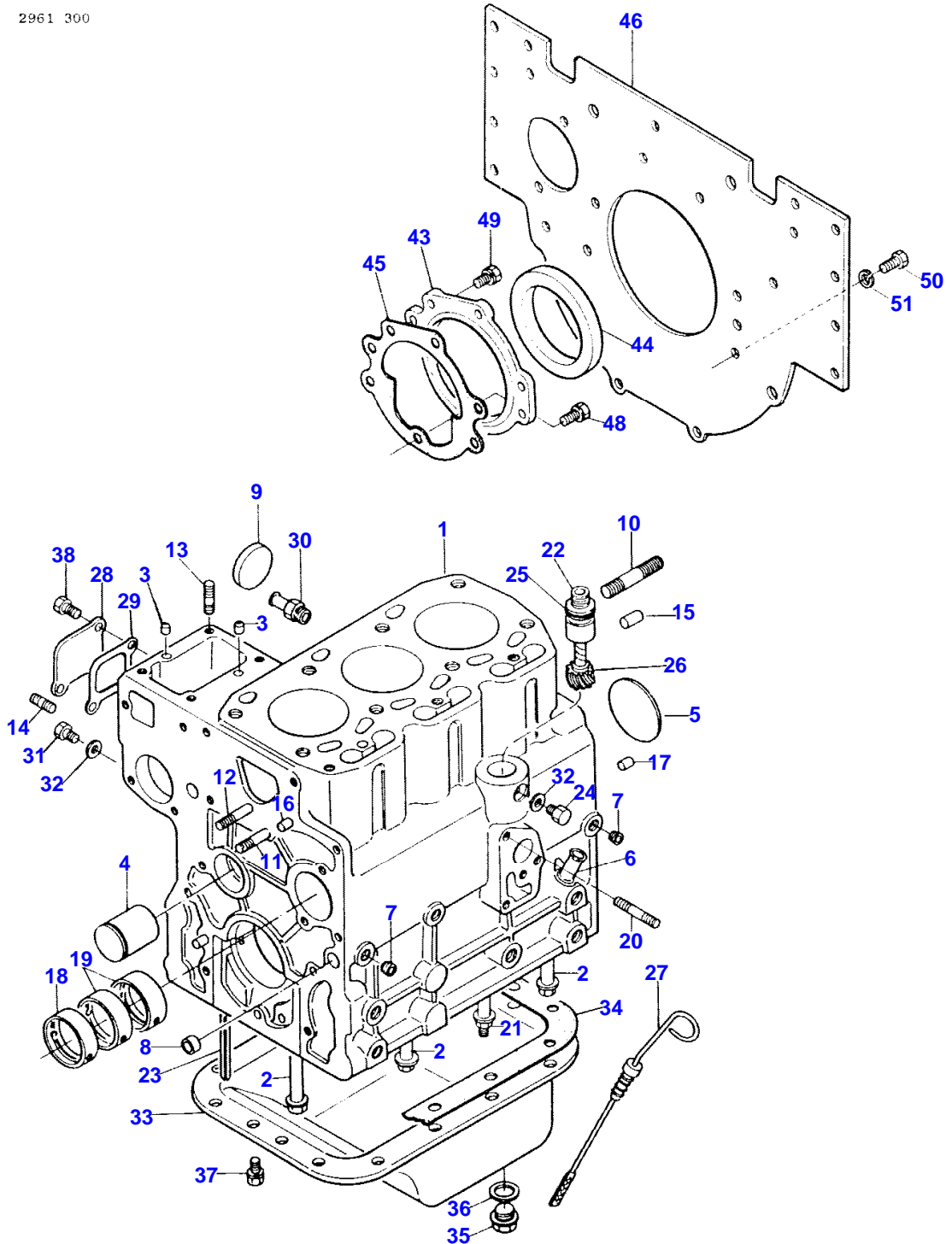


Page Title	Page Number
CYLINDER BLOCK	2
CAMSHAFT, TIMING GEAR	5
PISTONS, CONNECTING RODS AND CRANKSHAFT	6
CYLINDER HEAD	9
LUBRICATING SYSTEM	10
GASKET KITS	13
COOLING SYSTEM	14
WATER PUMP AND THERMOSTAT	17
AIR INTAKE AND EXHAUST	18
FUEL SYSTEM	21
THROTTLE LINKAGE	22
GOVERNOR	25
FUEL TANK AND INSTRUMENT PANEL	26
ELECTRICAL WIRING, INSTRUMENTS AND SWITCHES	29
GENERATOR	30
STARTER	33
LIGHTING	34
FRONT AXLE - TWO WHEEL DRIVE	37
FRONT AXLE - FOUR WHEEL DRIVE	38
FRONT AXLE - FOUR WHEEL DRIVE	41
FRONT AXLE - FOUR WHEEL DRIVE	42
STEERING	45
POWER STEERING	45A
SHIFT LEVERS-12 SPEED TRANSMISSION	46
FORE AND AFT PEDAL LINKAGE	49
BRAKE, CLUTCH AND HST CONTROLS	50
CLUTCH	53
TRANSMISSION HOUSINGS	54
HYDROSTATIC PUMP AND MOTOR	57
FRONT AND REAR DRIVE SHAFT	58
REAR AND MID P.T.O.	61
REAR AXLE AND BRAKES	62
DIFFERENTIAL AND LOCK	65
GASKET SET	66
OIL COOLER LINES AND FILTERS	69
HYDRAULIC PUMP AND LINES	70
HYDRAULIC LIFT COVER	73
HYDRAULIC LIFT LINKAGE	74
HYDRAULIC CONTROL VALVE AND LIFT HOUSING COVER	77
THREE POINT HITCH	78
P.T.O. GUARD AND DRAWBAR	81
HOOD, GRILLE AND FRAME	82
STEP PLATES AND SIDE COVERS	85
FENDERS AND SEAT	86
WHEELS - FRONT AND REAR	89
R.O.P.S. AND SEAT BELTS	90
EMBLEMS AND LABELS	93
ACCESSORIES	94
REAR WORK LIGHT - 010605A91 AND 010526A91	97
FRONT MOUNTED P.T.O.	98
AUXILIARY HYDRAULICS - USED LATE PRODUCTION TRACTORS	101
AUXILIARY HYDRAULICS - USED EARLY PRODUCTION TRACTORS.	102
SINGLE SPOOL VALVE	105
TWO SPOOL VALVE	106
PAINT AND OIL	109

2

CYLINDER BLOCK

2961 300



1ST PRINT

651 563 M91 (ISSUE 1) 2/86

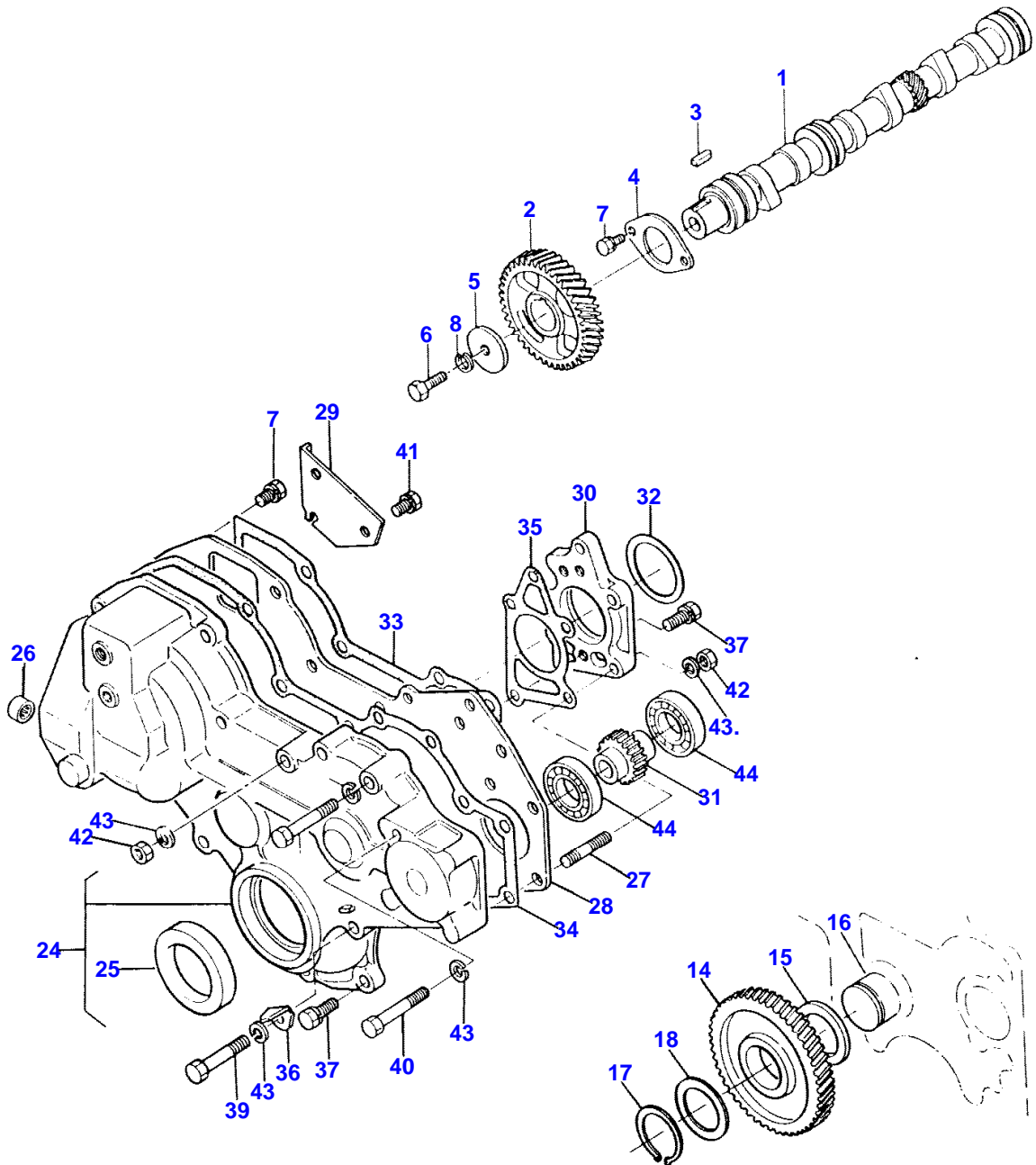
CYLINDER BLOCK

Item	Part Number	Qty	Description	Comments
	3439698M91	1	Engine	
	3439702M91	1	Block	
1	3437394M91	1	Block	
2	3284003M1	8	Bolt	
3	3284004M1	2	Locator	
4	3284006M1	1	Shaft	
5	3284005M1	1	Plate	Diameter 55MM
6	3280498M1	1	Adaptor	
7	3283891M1	4	Plug	1/8"
8	3280120M1	2	Plug	Diameter 14MM
9	3280121M1	3	Plug	Diameter 40MM
10	3283997M1	2	Stud	M12 - 1.5 X 90MM
11	3435018M1	1	Stud	M8 - 1.5 X 55MM
12	3284847M1	1	Stud	M8 - 1.5 X 40MM
13	3284846M1	4	Stud	M8 - 1.5 X 22MM
14	391000X1	1	Stud	M8 - 1.25 X 20MM
15	1440690X1	2	Pin	10 X 22MM
16	3283991M1	2	Locator	
17	3435645M1	2	Pin	
18	3284001M1	1	Bush	
19	3284002M1	2	Bush	
20	3437358M1	1	Stud	
21	3437341M1	1	Bolt	
22	3283980M1	1	Guide	
23	3283981M1	4	Gasket	
24	3283982M1	1	Screw	
25	3283983M1	1	Gasket	
26	3283984M1	1	Worm Gear	
27	3283985M1	1	Dipstick	
28	3283986M1	1	Plate	
29	3283987M1	1	Gasket	
30	3283988M1	1	Union	
31	3283978M1	1	Screw	
32	3283538M1	2	Gasket	
33	3437395M91	1	Pan	
34	3283491M1	1	Gasket	
35	3280104M1	2	Plug	
36	3280105M1	2	Gasket	
37	3283489M1	16	Screw	Not serviced, order 1440711X1 Not serviced, order 353446X1
38	3283979M1	2	Bolt	Not serviced, order 339560 Not serviced, order 353441X1
43	3284011M91	1	Housing	
44	3283518M1	1	Gasket	
45	3284012M1	1	Gasket	
46	3284013M1	1	Plate	
48	3284009M1	7	Bolt	Not serviced, order 339337X1 Not serviced, order 390972X1 Not serviced, order 353446X1
49	3283468M1	4	Bolt	Not serviced, order 391931X1 Not serviced, order 390972X1 Not serviced, order 353446X1
50	1441134X1	6	Screw Metric	
51	339376X1	6	Lock Washer	
		X	Heater	See Page - Reference Number 94

CAMSHAFT, TIMING GEAR

5

2961 301



1ST PRINT

651 563 M91 (ISSUE 1) 2/86

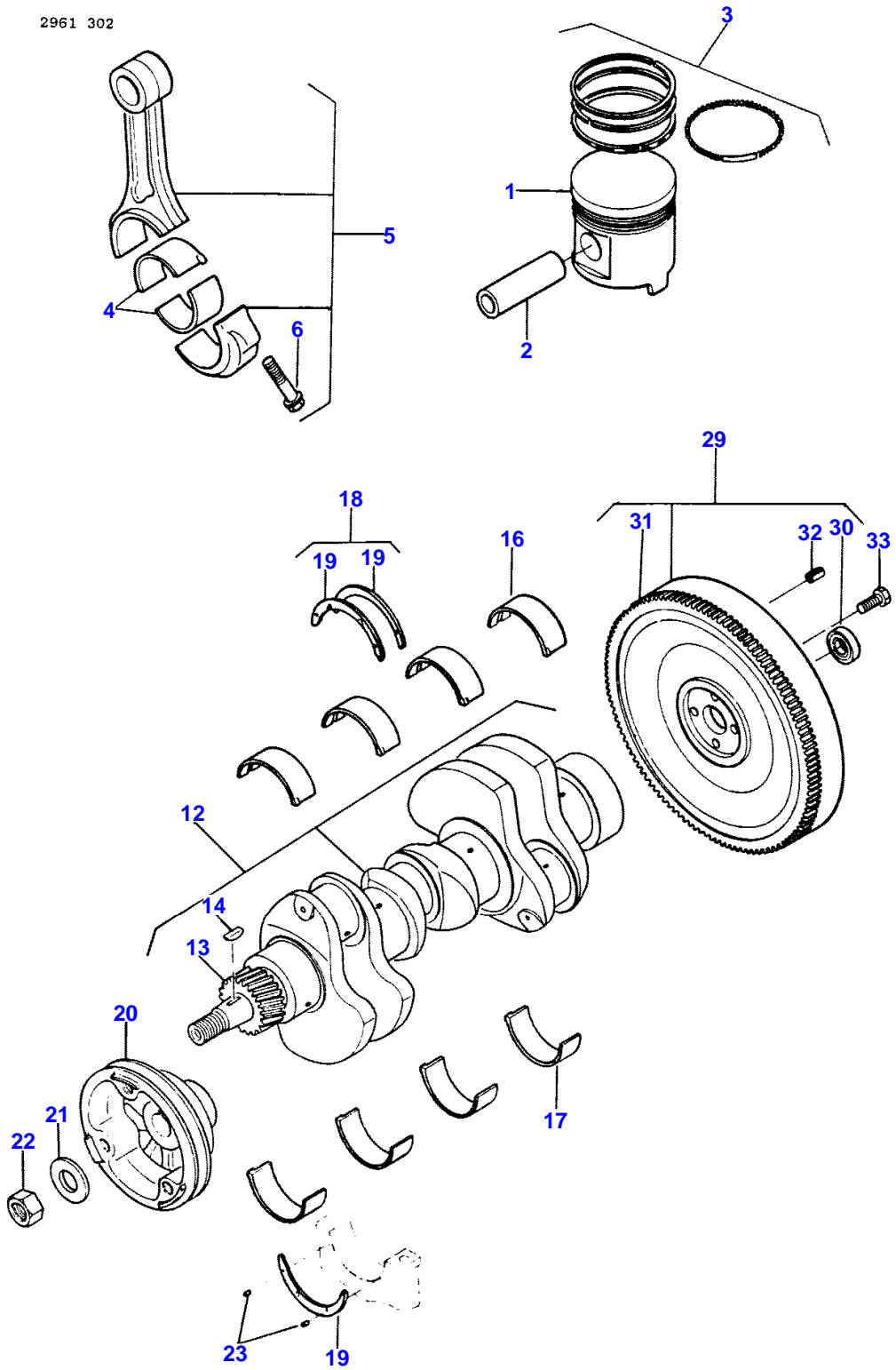
CAMSHAFT, TIMING GEAR

Item	Part Number	Qty	Description	Comments
1	3283523M1	1	Camshaft	
2	3283524M1	1	Pinion	
3	3283525M1	1	Key	
4	3283526M1	1	Plate	
5	3280146M1	1	Washer	
6	1442558X1	1	Bolt	
7	3283521M1	8	Bolt	Not serviced, order 390379X1 Not serviced, order 353446X1
8	339376X1	1	Lock Washer	M10
14	3283864M91	1	Pinion	
15		1	Shaft	See Page - Reference Number 2
16	3283868M1	1	Spacer	
17	3283863M1	1	Clip	
18	3283865M1	X	Thrust Washer	1.8MM
	3283866M1	X	Thrust Washer	2.0MM
	3283867M1	X	Thrust Washer	2.3MM
24	3283882M91	1	Cover	
25	3283885M1	1	Gasket	
26	3283886M1	2	Bush	
27	3283884M1	2	Stud	
28	3283877M1	1	Plate	
29	3437398M1	1	Plate	
30	3283878M1	1	Housing	
31	3283879M1	1	Pinion	
32	3283880M1	X	Thrust Washer	0.3MM
	3283881M1	X	Thrust Washer	0.5MM
	3284638M1	X	Thrust Washer	0.1MM
33	3283873M1	1	Gasket	
34	3283874M1	1	Gasket	
35	3283875M1	1	Gasket	
36	3283876M1	1	Thruster	
37	3283872M1	5	Bolt	
39	339168X1	3	Bolt Metric	
	339291X1	1	Bolt Metric	
40	339368X1	1	Bolt Metric	
41	3283871M1	2	Bolt	Not serviced, order 339123X1 Not serviced, order 353446X1
42	1440203X1	3	Nut Metric	
43	353446X1	8	Lock Washer	5/16"
44	339064X1	2	Bearing Ball	

6

PISTONS, CONNECTING RODS AND CRANKSHAFT

2961 302



1ST PRINT

651 563 M91 (ISSUE 1) 2/86

MASSEY FERGUSON

MF 1010 COMPACT TRACTOR, HYDRO - 651563EA

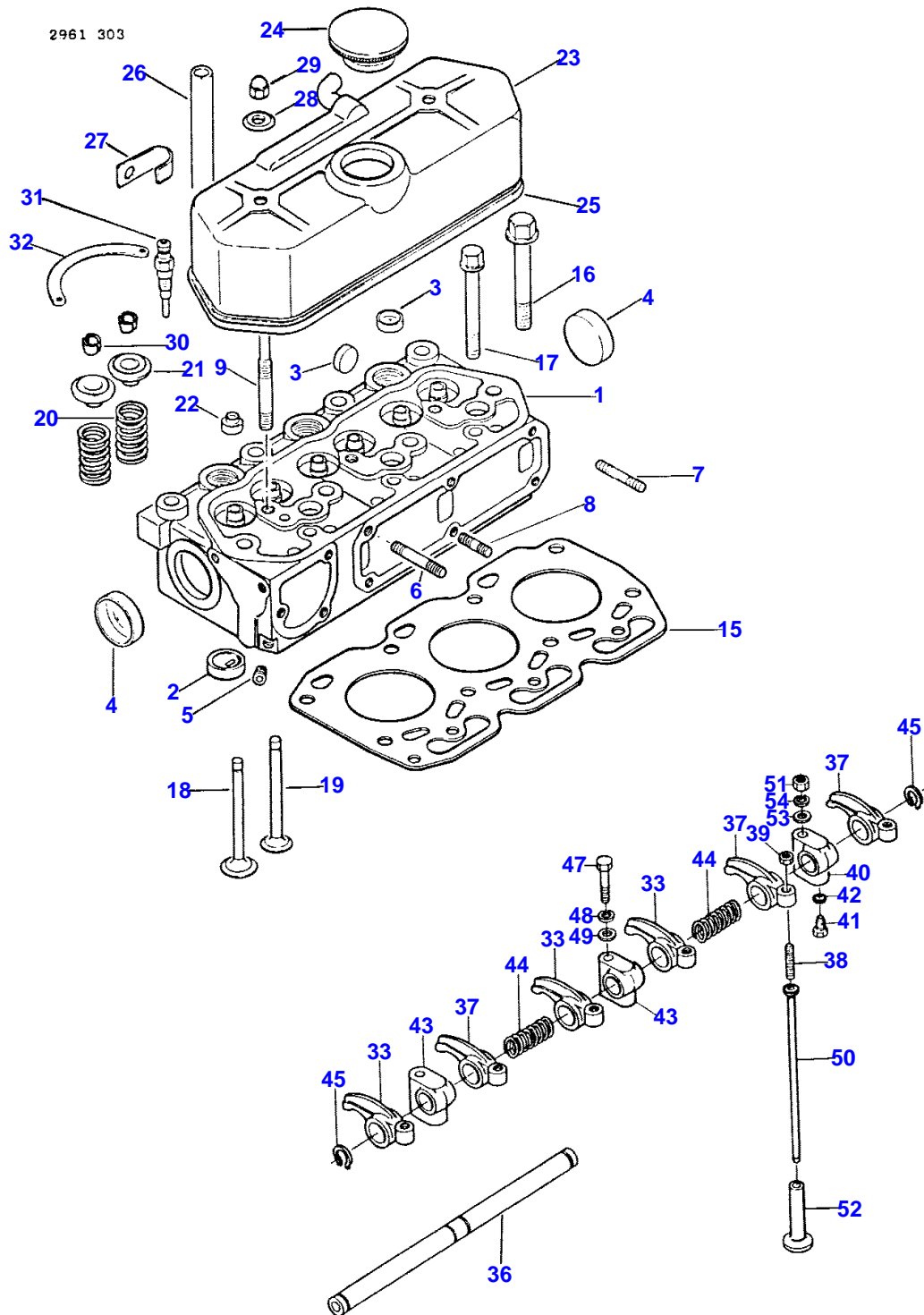
651563EA

PISTONS, CONNECTING RODS AND CRANKSHAFT

6

Item	Part Number	Qty	Description	Comments
1	3283494M1	3	Piston	
2	3283498M1	3	Clevis Pin	
3	3284984M91	3	Kit, Ring	
	3284985M91	3	Kit, Ring	.05 O/S
4	3283499M1	6	Bearing	-.25MM
	3284635M1	6	Bearing	-.50MM
	3284636M1	6	Bearing	
5	3283500M91	3	Conrod	
6	3283503M1	6	Bolt	
12	3283509M91	1	Crankshaft	
13	3283512M1	1	Pinion	
14	3280001M1	2	Key	
	3284626M91	1	Kit, Bearing	
16		4	Bearing	Not serviced, order 3284626M91
17		4	Bearing	Not serviced, order 3284626M91
	3284627M91	1	Kit, Bearing	-.25MM
16		4	Bearing	-.25MM
				Not serviced, order 3284627M91
17		4	Bearing	-.25MM
				Not serviced, order 3284627M91
	3284628M91	1	Kit, Bearing	-.50MM
16		4	Bearing	-.50MM
				Not serviced, order 3284628M91
17		4	Bearing	-.50MM
				Not serviced, order 3284628M91
18	3284629M91	1	Parts Pack	
19		2	Flange	Not serviced, order 3284629M91
18	3284630M91	1	Parts Pack	+.25MM
19		2	Flange	+.25MM
				Not serviced, order 3284630M91
18	3284631M91	1	Parts Pack	+.50MM
19		2	Flange	+.50MM
				Not serviced, order 3284631M91
20	3283505M1	1	Pulley	
21	3280140M1	1	Flat Washers	23 X 46 X 5MM
22	1441611X1	1	Nut Metric	
23	3280947M1	4	Pin	
29	3284010M91	1	Flywheel	
30	3435646M1	1	Bearing Assy	
31	3283516M1	1	Annular Gear	
32	3283514M1	3	Pin	
33	1441302X1	4	Bolt Metric	

CYLINDER HEAD



1ST PRINT

651 563 M91 (ISSUE 1) 2/86

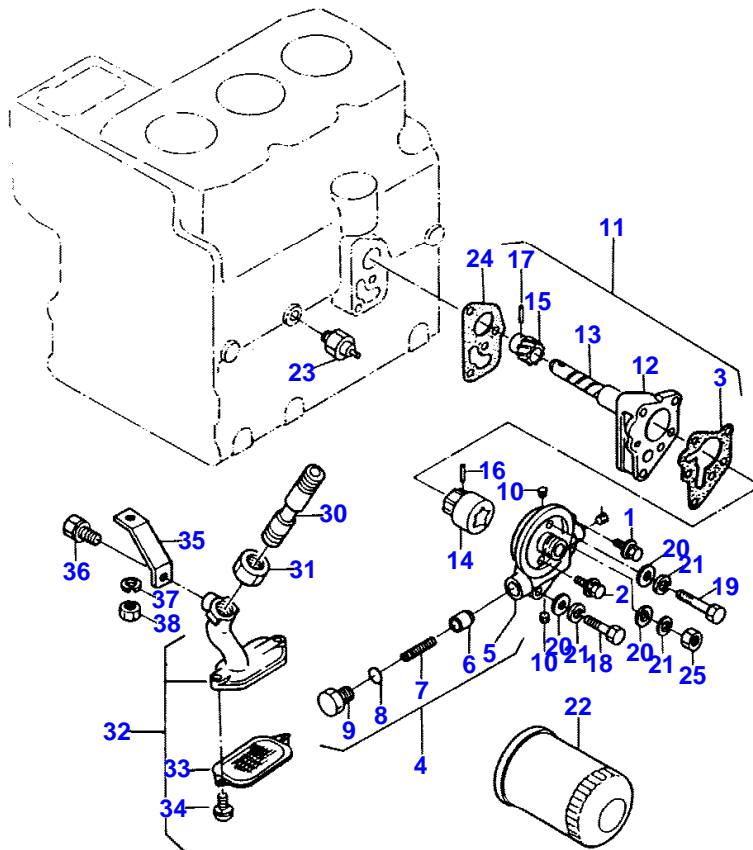
CYLINDER HEAD

Item	Part Number	Qty	Description	Comments
1	3283947M91	1	Cylinder Head	
2	3283951M1	3	Padding	
3	3280312M1	6	Plug	Diameter 20MM
4	3280121M1	2	Plug	Diameter 40MM
5	3283891M1	1	Plug	1/8" P.T.
6	3283950M1	3	Stud	
7	3283949M1	1	Stud	
8	391000X1	2	Stud	M8 - 1.25 X 20MM
9	3283952M1	2	Stud	M8 X 1.25 X M10 X 1.25 X 95MM
15	3283937M1	1	Head Gasket	
16	3283938M1	8	Bolt	
17	3283939M1	3	Bolt	
18	3283945M1	3	Valve	
19	3283946M1	3	Valve	
20	3283934M1	6	Spring	
21	3283935M1	6	Retainer	
22	3283936M1	6	Gasket	
23	3283942M91	1	Valve Cover	
24	3283943M1	1	Plug	
25	3280071M1	1	Gasket	
26	3283940M1	1	Tube	
27	3283941M1	1	Tie	
28	3280072M1	2	Washer	
29	3005908X1	2	Nut	
30	3280023M1	12	Lock	
31	3284128M1	3	Glow Plug	
32	3284129M1	2	Plate	
36	3283527M91	1	Rocker Arm Shaft	
	3283529M91	1	Shaft	
	3283530M91	6	Arm	
37	3283536M1	6	Arm	
38	3283537M1	6	Screw	
39	1440203X1	6	Nut Metric	
	3283531M91	1	Support	
40	3283539M1	1	Support	
41	3283540M1	1	Bolt	
42	3283538M1	1	Gasket	
43	3283532M1	2	Support	
44	3283533M1	2	Spring	
45	1441970X1	2	Circlip	Thickness 19MM NOM. X 1.2MM
47	3437309M1	1	Bolt Metric	
48	339376X1	4	Lock Washer	M10
49	390734X1	3	Washer Metric	10.5 X 21 X 2MM
50	3283522M1	6	Tappet Rod	
51	1441409X1	2	Nut Metric	
52	3280145M1	6	Valve	
53	390734X1	2	Washer Metric	10.5 X 21 X 2MM
54	339376X1	2	Lock Washer	M10

10

LUBRICATING SYSTEM

2961 304



1ST PRINT

651 563 M91 (ISSUE 1) 2/86

Buy Now



Our support email:

ebooklibonline@outlook.com