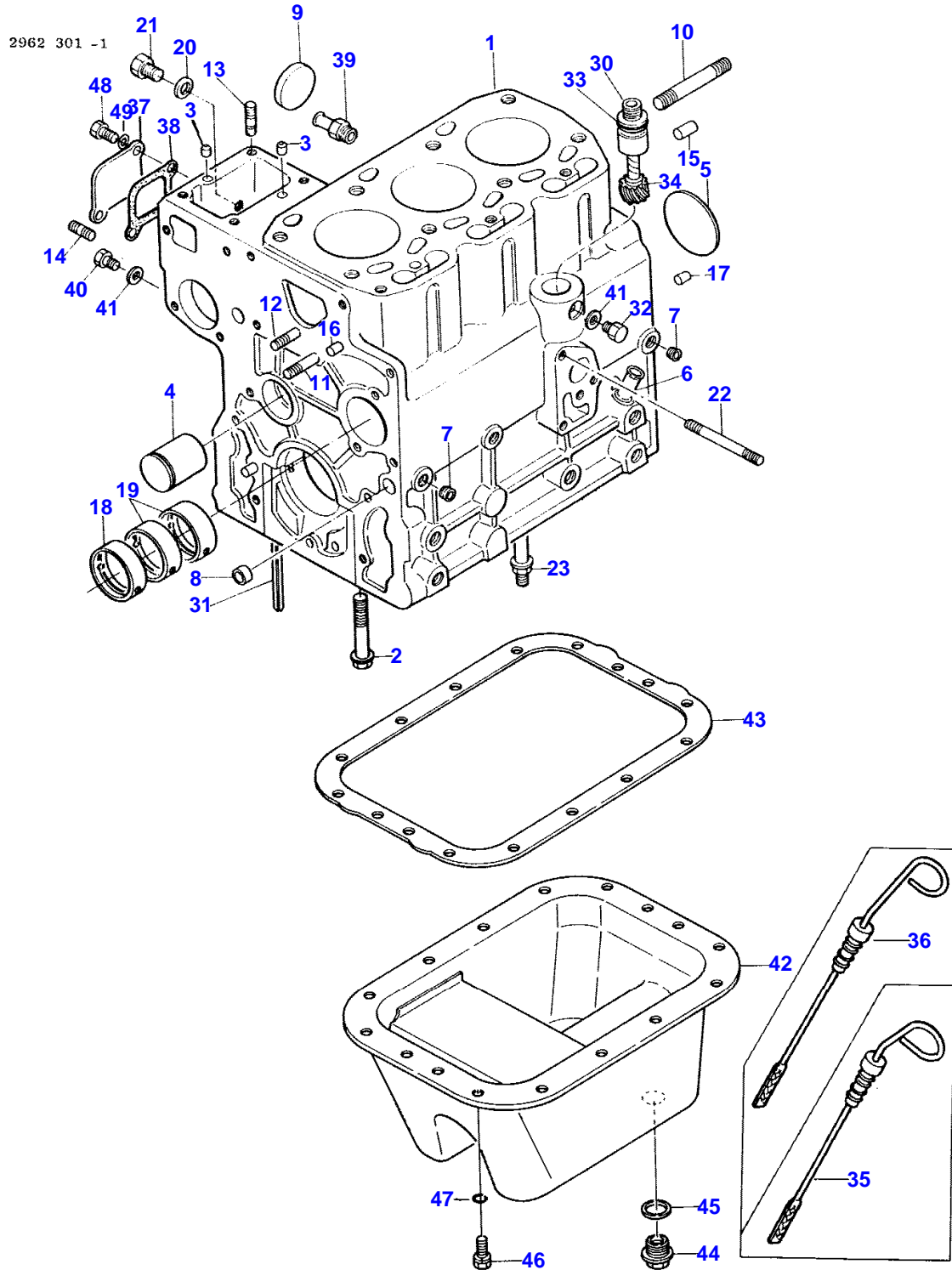


Page Title	Page Number
CYLINDER BLOCK AND OIL PAN	2
CAMSHAFT, TIMING GEAR	5
PISTONS, CONNECTING RODS, CRANKSHAFT AND FLYWHEEL	6
CYLINDER HEAD	9
LUBRICATING SYSTEM	10
GASKET KITS	13
RADIATOR	14
WATER PUMP AND OUTLET	17
AIR CLEANER AND MUFFLER	18
FUEL TANK	21
INJECTION SYSTEM	22
THROTTLE LINKAGE (2WD, 4WD)	25
GOVERNOR	26
ELECTRICAL WIRING	29
GENERATOR	30
STARTER	33
COWL AND INSTRUMENT PANEL	34
INSTRUMENTS AND SWITCHES	37
LIGHTS	38
FRONT AXLE AND HUB (TWO WHEEL DRIVE)	41
FRONT AXLE AND HUB (FOUR WHEEL DRIVE)	42
FRONT AXLE DRIVE (FOUR WHEEL DRIVE)	45
STEERING	46
POWER STEERING (SEE NOTE "A")	47B
HYDRAULIC CYLINDER	47C
SHIFT LEVERS	49
FORE AND AFT PEDAL LINKAGE	50
BRAKE, CLUTCH AND HST CONTROLS	53
CLUTCH HOUSING, CLUTCH AND DRIVE SHAFT	54
HYDROSTATIC TRANSMISSION	57
HYDROSTATIC PUMP AND MOTOR	58
FRONT AND REAR DRIVE SHAFT	61
REAR AND MID P.T.O.	62
REAR AXLE AND BRAKES	65
DIFFERENTIAL	66
GASKET SET	69
OIL COOLER LINES AND FILTERS	70
HYDRAULIC PUMP AND FILTER (SEE NOTE (A))	73
LIFT COVER, PISTON AND ARMS	74
HYDRAULIC LIFT CONTROL	77
CONTROL VALVE AND COVER	78
LIFT LINKAGE	81
P.T.O. GUARD AND DRAWBAR	82
HOOD, GRILLE AND FRAME	85
FENDERS AND STEP PLATES	86
SEAT AND FLOORS	89
WHEELS (2 WD, 4 WD)	90
EMBLEMS AND LABELS	93
R.O.P.S. AND SEAT BELTS	94
FRONT MOUNTED P.T.O.	97
LIGHT ACCESSORIES	98
AUXILIARY HYDRAULICS (USED LATE PRODUCTION TRACTORS)	101
AUXILIARY HYDRAULICS (USED EARLY PRODUCTION TRACTORS)	102
SINGLE SPOOL VALVE	105
TWO SPOOL VALVE	106
WEIGHT ACCESSORIES (2 WD, 4 WD)	109
PAINT AND OIL (RED ENAMEL (M-1041))	110

# 1020 TRACTOR (HYDRO. TRANSMISSION)

2

## CYLINDER BLOCK AND OIL PAN



87-23

651 576 M91 (ISSUE 2) 4/87

## CYLINDER BLOCK AND OIL PAN

Item	Part Number	Qty	Description
	3439700M92	1	Engine Assembly (Complete)
	3439695M91	1	Short Block Assembly
1	3435135M91	1	Block Assembly
2	3605087M1	8	(A) Bolt, Bearing Cap (M11 - 1.25 x 61MM Hex.)
	3284003M1	8	(B) Bolt, Bearing Cap (M11 - 1.25 x 60MM Hex.)
3	3284004M1	2	Pin, Dowel
4	3284006M1	1	Shaft, Idler Gear
5	3284005M1	1	Plug (55MM Diag.)
6	3280498M1	1	Adapter, Oil Dipstick
7	3283891M1	4	Plug (1/8" P.T.)
8	3280120M1	2	Plug (14MM Dia.)
9	3280121M1	3	Plug (40MM Dia.)
10	3435137M1	2	Stud
11	3435018M1	1	Stud (M8 - 1.5 x 55MM)
12	3284847M1	1	Stud (M8 - 1.5 x 40MM)
13	3284846M1	4	Stud (M8 - 1.5 x 22MM)
14	3284845M1	1	Stud (M8 - 1.5 x 20MM)
15	1440690X1	2	Pin (10 x 22MM Dowel)
16	3283991M1	2	Pin, Dowel (Front)
17	3435645M1	2	Pin, Dowel (Rear)
18	3284001M1	1	Bearing, Camshaft (Front)
19	3284002M1	2	Bearing, Camshaft (Rear)
20	3436695M1	1	Gasket
21	3435416M1	1	Bolt (M10 - 1.25 x 14MM Hex. Hd.)
22	3437358M1	1	Stud (M8 - 1.5 x 60MM)
23	3605088M1	1	(A) Bolt, (M11-1.25 x 61MM Hex W/M10-1.25 Stud)
	3437341M1	1	(B) Bolt, (M11 - 1.25 x 60MM Hex., W/M10-1.25 Stud)
30	3283980M1	1	Guide, Cable
31	3283981M1	4	Seal, Bearing Cap
32	3283982M1	1	Bolt, Lock
33	3283983M1	1	"O" Ring, Guide
34	3283984M1	1	Gear, Cable Drive
35	3435134M1	1	(C) Dipstick, Oil Level Indicator
36	3283985M1	1	(D) Dipstick Gauge, Oil Level
37	3283986M1	1	Cover
38	3283987M1	1	Gasket, Cover
39	3283988M1	1	Connector, Drain Hose
40	3283978M1	1	Bolt (M6 - 1.0 x 10MM)
41	3283538M1	2	Gasket, Bolt
42	3435138M92	1	Pan Assembly, Oil
43	3283491M1	1	Gasket, Oil Pan
44	3280104M1	1	Plug, Drain (Magnetic)
45	3280105M1	1	Gasket, Drain Plug
46	1440711X1	16	Bolt (M8 - 1.25 x 16MM Hex., Hd)
47	353446X1	16	Washer (5/16" Lock)
48	339560X1	2	Bolt (M6 - 1.0 x 16MM Hex.)
49	353441X1	2	Washer (1/4" Lock)

\*\*\*\*\*

(A) - Used 2WD Tractor Serial Number  
02414 And Up.- Used 4WD Tractor Serial Number 41837  
And Up.(B) - Used Prior To 2WD Tractor Serial  
Number 02414.- Used Prior To 4WD Tractor Serial  
Number 41837.

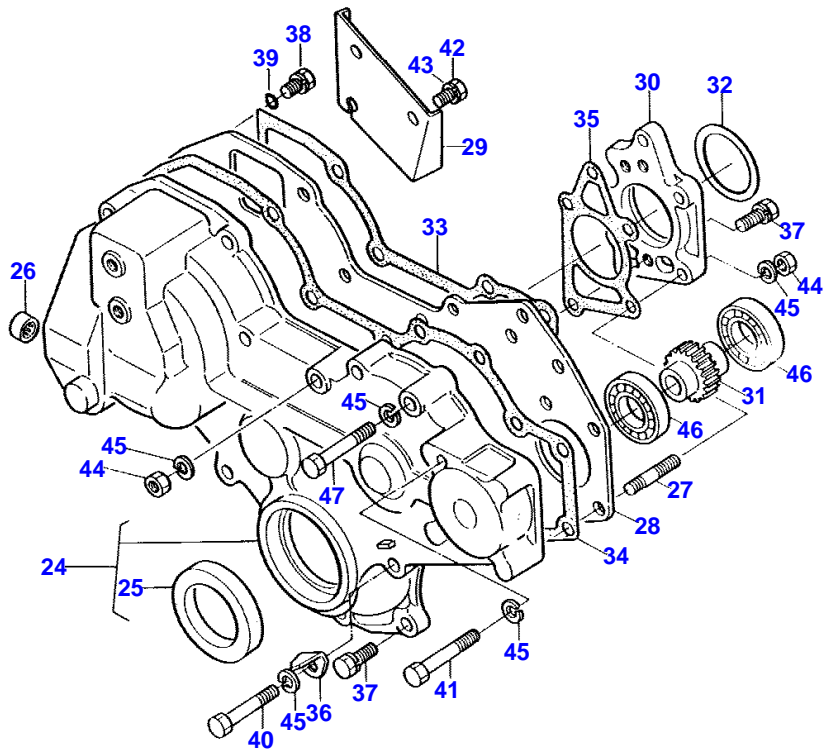
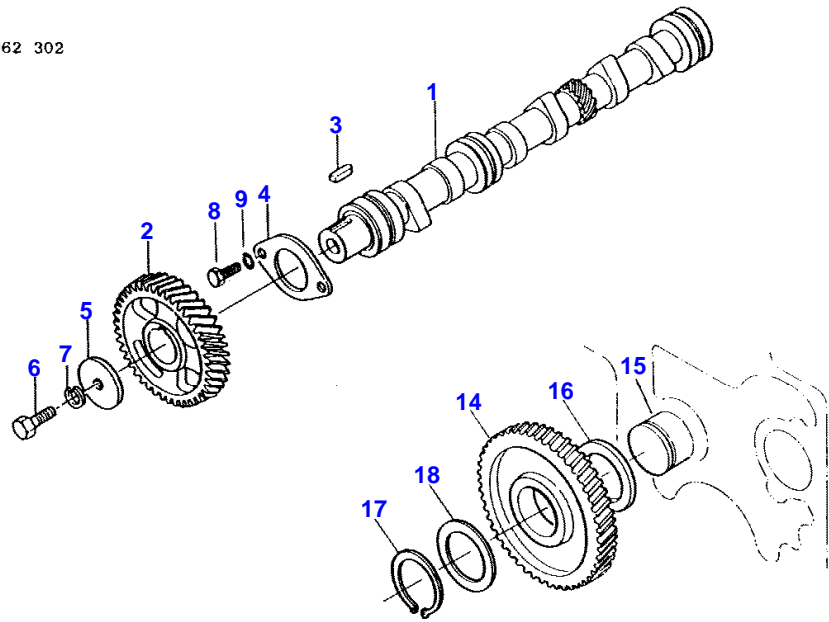
(C) - Used Late Production Tractors.

(D) - Used Early Production Tractors.

CAMSHAFT, TIMING GEAR

5

2962 302



1ST PRINT

651 576 M91 (ISSUE 1) 9/86

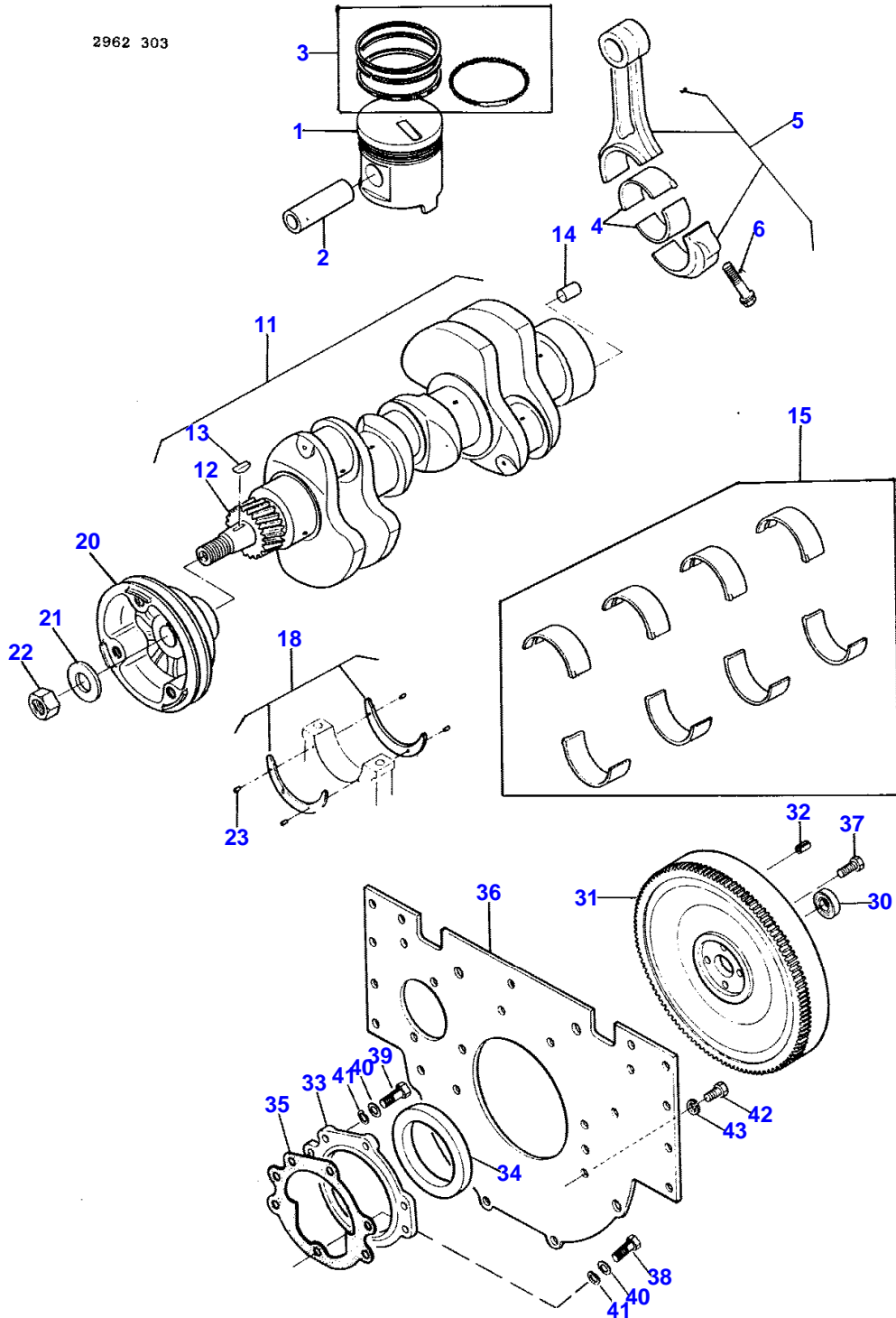
## CAMSHAFT, TIMING GEAR

Item	Part Number	Qty	Description
1	3283523M1	1	Camshaft, Engine
2	3283524M1	1	Gear, Camshaft
3	3283525M1	1	Key, Camshaft Gear
4	3283526M1	1	Plate, Camshaft Thrust
5	3280148M1	1	Washer, Thrust
6	1442558X1	1	Bolt (M10 - 1.25 x 35MM Hex.)
7	339376X1	1	Washer (M10 Lock)
8	390379X1	2	Bolt (M8 - 1.25 x 18MM Hex.)
9	353446X1	2	Washer (5/16" Lock)
14	3283864M91	1	Gear Assembly, Idler
15	3284006M1	1	Shaft, Idler Gear
16	3283868M1	1	Spacer, Idler Gear
17	3283863M1	1	Ring, Gear Retaining
18	3283865M1	AR	Washer, Thrust (1.8MM)
	3283866M1	AR	Washer, Thrust (2.0MM)
	3283867M1	AR	Washer, Thrust (2.3MM)
24	3283882M91	1	Cover Assembly, Timing Gear
25	3283885M1	1	Seal, Front Oil
26	3283886M1	2	Bearing, Needle
27	3283884M1	2	Stud (M8 - 1.5 x 30MM)
28	3283877M1	1	Plate, Cover (Front)
29	3283883M1	1	Plate, Screen
30	3283878M1	1	Housing, Bearing
31	3283879M1	1	Gear, Pump Drive
32	3283880M1	AR	Washer, Adjusting (0.3MM)
	3283881M1	AR	Washer, Adjusting (0.5MM)
	3284638M1	AR	Washer, Adjusting (0.1MM)
33	3283873M1	1	Gasket, Front Plate
34	3283874M1	1	Gasket, Gear Case
35	3283875M1	1	Gasket, Bearing Housing
36	3283876M1	1	Plate, Timing
37	3283872M1	5	Bolt W/Lock (M8 - 1.25 x 28MM Hex. Hd.)
38	390379X1	6	Bolt (M8 - 1.25 x 18MM Hex.)
39	353446X1	6	Washer (5/16" Lock)
40	339168X1	4	Bolt (M8 - 1.25 x 50MM Hex.)
41	339368X1	1	Bolt (M8 - 1.25 x 60MM Hex.)
42	339123X1	2	Bolt (M8 - 1.25 x 20MM Hex.)
43	353446X1	2	Washer (5/16" Lock)
44	1440203X1	3	Nut (M8 - 1.25 Hex.)
45	353446X1	8	Washer (5/16" Lock)
46	339064X1	2	Bearing, Ball
47	339291X1	1	Bolt (M8 - 1.25 x 55MM Hex.)

# 1020 TRACTOR (HYDRO. TRANSMISSION)

6

## PISTONS, CONNECTING RODS, CRANKSHAFT AND FLYWHEEL



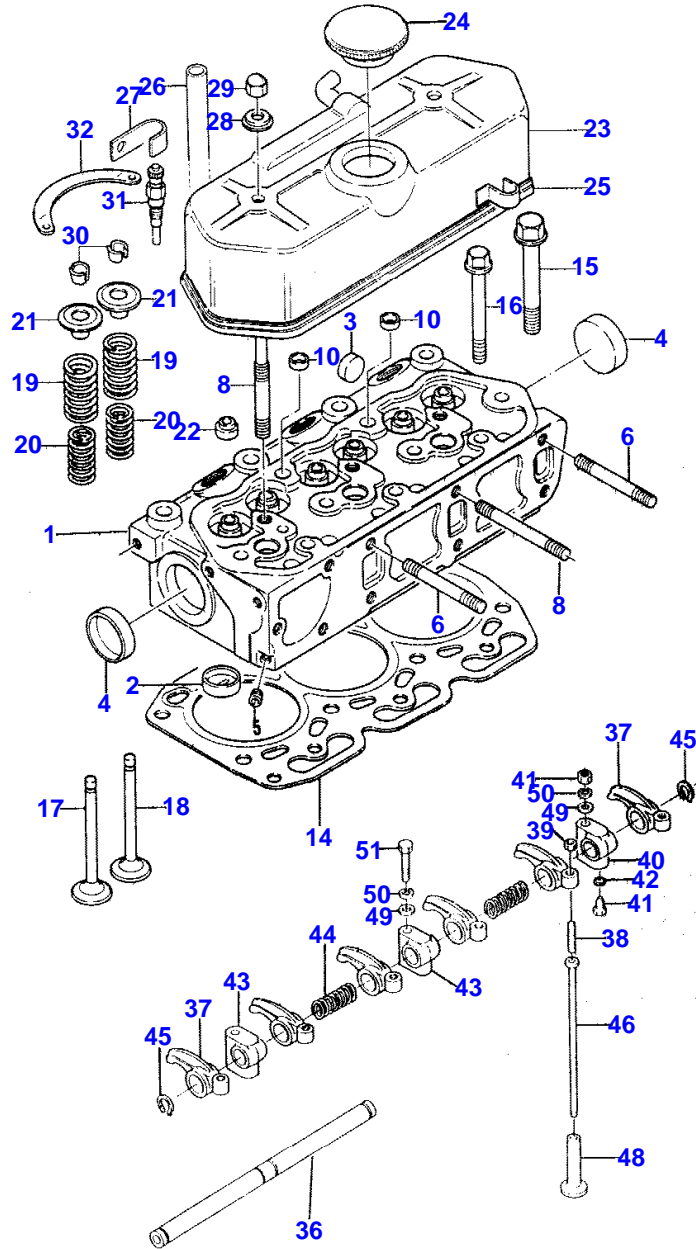
1ST PRINT

651 576 M91 (ISSUE 1) 9/86

Item	Part Number	Qty	Description
1	3435663M1	3	Piston (Std.)
	3435604M1	3	Piston (+.50MM)
2	3435145M1	3	Pin
3	3435605M91	3	Ring Set, Single Piston (Std.)
	3435606M91	3	Ring Set, Single Piston (+.50MM)
4	3283499M1	6	Bearing, Connecting Rod (Standard)
	3284635M1	6	Bearing, Connecting Rod (-.25MM)
	3284636M1	6	Bearing, Connecting Rod (-.50MM)
5	3283500M91	3	Rod Assembly, Connecting
6	3283503M1	6	Bolt, Connecting Rod
11	3435146M91	1	Crankshaft Assembly
12	3283512M1	1	Gear, Crankshaft
13	3280001M1	2	Key, Crankshaft
14	3280931M1	1	Pin, Dowel
15	3284626M91	1	Bearing Kit, Main (Std.)
	3284627M91	1	Bearing Kit, Main (-.25MM)
	3284628M91	1	Bearing Kit, Main (-.50MM)
18	3284629M91	1	Flange Kit, Thrust (Standard)
	3284630M91	1	Flange Kit, Thrust (+.25MM)
	3284631M91	1	Flange Kit, Thrust (+.50MM)
20	3283505M1	1	Pulley, Crankshaft
21	3280140M1	1	Washer (23 x 46 x 5MM Flat)
22	1440218X1	1	Nut (M12 - 1.5 Hex.)
23	3280974M1	4	Plug (16MM Dia.)
	3435148M91	1	Flywheel Assembly
30	3435646M1	1	Bearing, Flywheel Pilot
31	3283516M1	1	Ring Gear, Flywheel
32	3283514M1	3	Pin, Dowel
33	3284011M91	1	Cover Assembly, Oil Seal
34	3283518M1	1	Seal, Rear Oil
35	3284012M1	1	Gasket, Oil Seal Cover
36	3284013M1	1	Plate, Flywheel (Rear)
37	1441302X1	4	Bolt (M10 - 1.25 x 30MM Hex.)
38	339337X1	1	Bolt (M8 - 1.25 x 30MM Hex. Hd.)
39	391931X1	4	Bolt (M8 - 1.25 x 25MM Hex.)
40	390972X1	5	Washer (8.4 x 17 x 1.6MM Flat)
41	353446X1	5	Washer (5/16" Lock)
42	1441134X1	6	Bolt (M10 - 1.25 x 25MM Hex.)
43	339376X1	6	Washer (M10 Lock)

CYLINDER HEAD

2962 304



1ST PRINT

651 576 M91 (ISSUE 1) 9/86



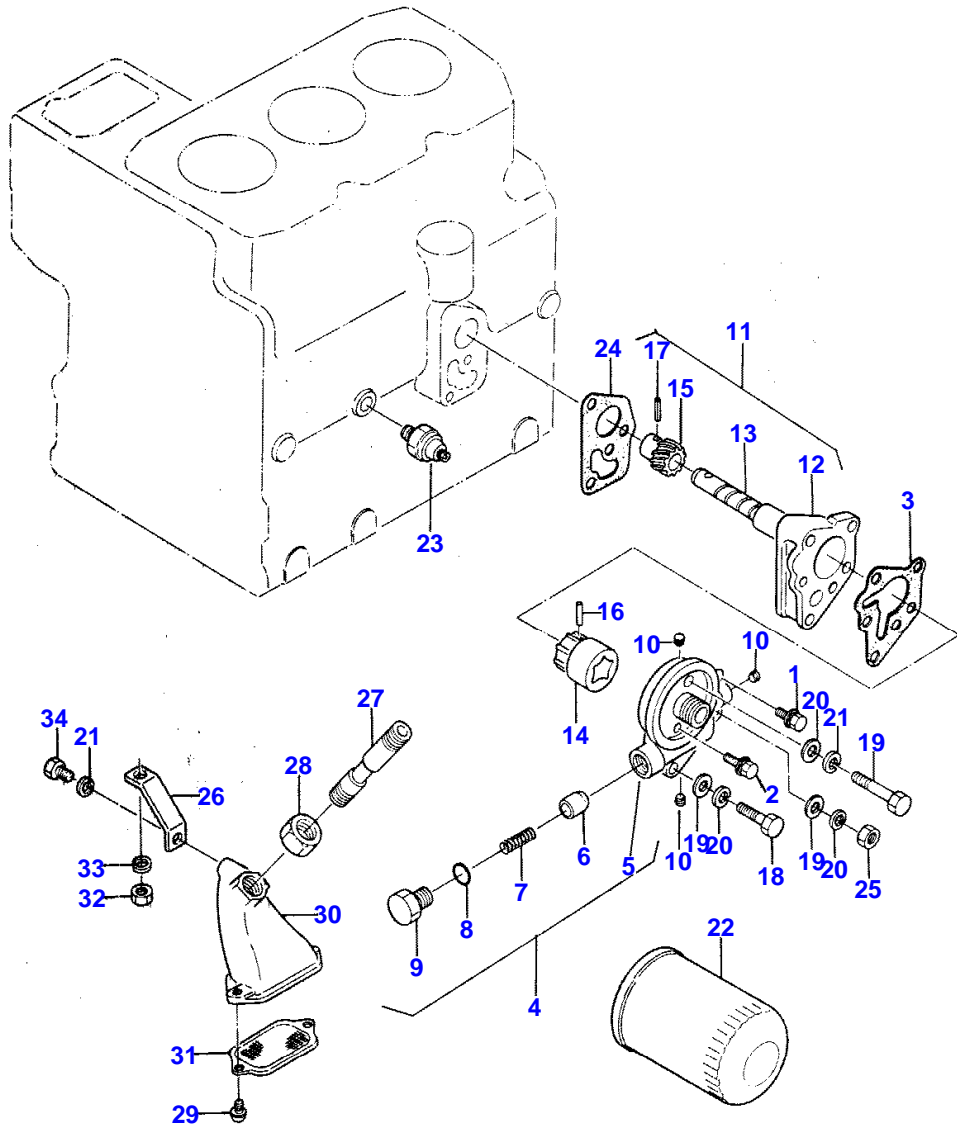
## CYLINDER HEAD

Item	Part Number	Qty	Description
1	3435114M91	1	Head Assembly
2	3435117M1	3	Insert, Chamber
3	3280312M1	6	Plug (20MM Dia. Cup Type)
4	3280121M1	2	Plug (40MM Dia.)
5	3283891M1	1	Plug (1/8" P.T.)
6	3283950M1	4	Stud (M8 - 1.5 x 65MM)
8	3435118M1	2	Stud, Cylinder Head
9	3283952M1	2	Stud (M8 x 1.25 x M10 x 1.25 x 95MM)
10	3280674M1	2	Plug (16MM Dia.)
14	3435113M1	1	Gasket, Head
15	3283938M1	8	Bolt (M12 - 1.5 x 88MM Lg.)
16	3283939M1	3	Bolt (M10 - 1.25 x 85MM Lg.)
17	3435109M1	3	Valve, Intake
18	3435110M1	3	Valve, Exhaust
19	3435111M1	6	Spring (Outer)
20	3435112M1	6	Spring (Inner)
21	3283935M1	6	Retainer, Valve Spring
22	3283936M1	6	Seal, Valve Stem
23	3435119M91	1	Cover Assembly
24	3283943M1	1	Cap, Oil Filler
25	3280071M1	1	Gasket, Cylinder Head Cover
26	3283940M1	1	Hose, Breather
27	3283941M1	1	Clamp Breather Hose
28	3280072M1	2	Washer
29	3005908X1	2	Nut (M8 - 1.25 Acorn)
30	3280023M1	12	Lock, Valve Spring
31	3284128M1	3	Glow Plug, Engine
32	3284129M1	2	Plate, Plug Connecting
	3283527M91	1	Rocker Assembly Valve
36	3283529M91	1	Shaft Assembly, Rocker Arm
	3283530M91	6	Arm Assembly, Rocker
37	3283536M1	1	Arm, Rocker
38	3283537M1	1	Screw, Rocker Arm Adjusting
39	1440203X1	1	Nut (M8 - 1.25 Hex.)
	3283531M91	1	Bracket Assembly, Support (Rear)
40	3283539M1	1	Bracket, Support (Rear)
41	3283540M1	1	Bolt, Bracket (Lock)
42	3283538M1	1	Gasket, Bolt
43	3283532M1	2	Bracket, Support (Front)
44	3283533M1	2	Spring, Rockershaft
45	1441970X1	4	Ring, Ext. Snap (19MM Nom. x 1.2MM Thk.)
46	3435150M1	6	Rod, Push
47	1441409X1	2	Nut (M10-1.25 Hex.)
48	3280145M1	6	Lifter, Valve
49	390734X1	2	Washer (10.5 x 21 x 2MM Flat)
50	339376X1	2	Washer (M10 Lock)
51	3437309M1	1	Bolt (M10 - 1.25 x 60MM Hex. Hd.)

10

LUBRICATING SYSTEM

2962 305



1ST PRINT

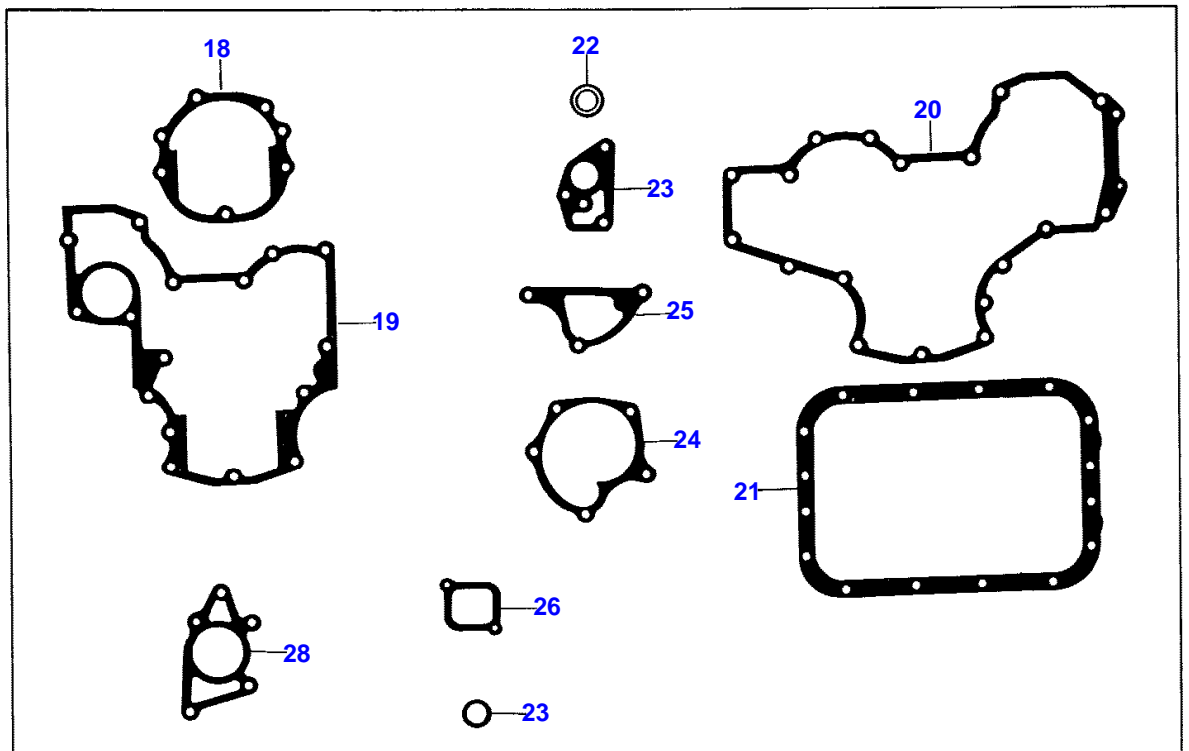
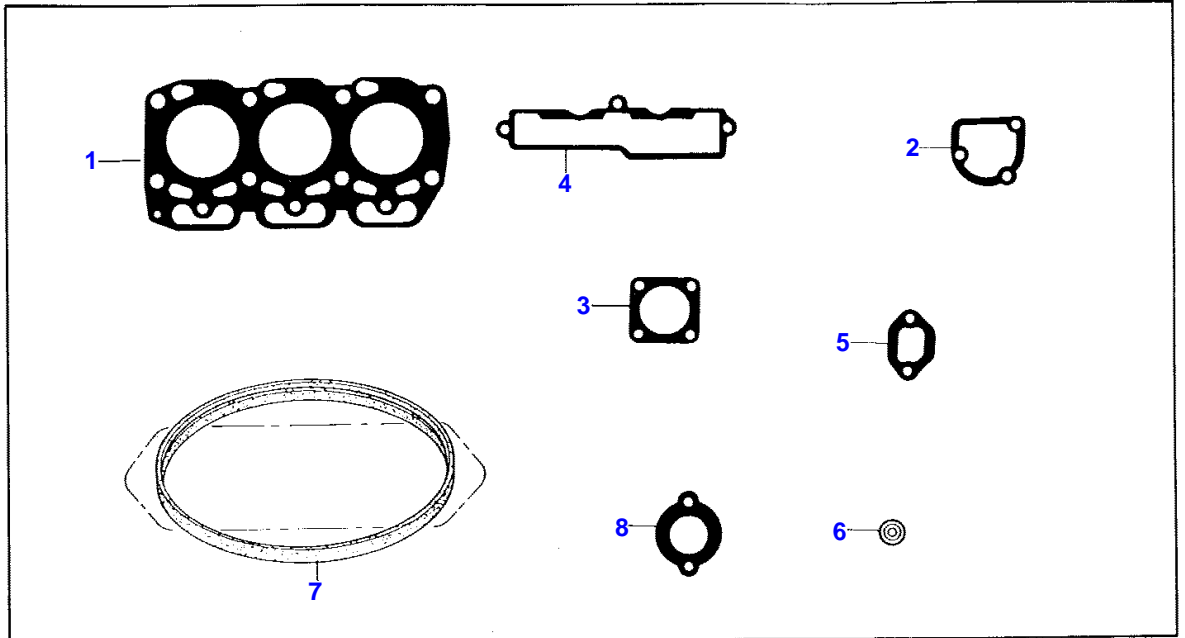
651 576 M91 (ISSUE 1) 9/86

## LUBRICATING SYSTEM

Item	Part Number	Qty	Description
	3284123M91	1	Kit, Oil Pump
1	3283924M1	1	Bolt W/Flat (M7 - 1.0 x 20MM)
2	3283925M1	1	Bolt W/Flat (M6 - 1.0 x 35MM)
3	3283926M1	1	Gasket, Oil Pump (0.1MM)
4	3283927M91	1	Cover Assembly, Oil Pump
5	3283894M1	1	Cover, Oil Pump
6	3283892M1	1	Valve, Relief
7	3283893M1	1	Spring, Relief Valve
8	3280194M1	1	"O" Ring, Oil Control Housing
9	3280193M1	1	Bolt (M14 - 1.5 x 12MM Hex.)
10	3283891M1	2	Plug (1/8" P.T.)
11	3283928M91	1	Pump Assembly, Oil
12		1	Body, Oil Pump (Order 3605202M91)
13		1	Shaft, Pump (Order 3605202M91)
14		1	Rotor Set (Order 3605202M91)
15	3283929M1	1	Gear, Oil Pump Driven
16	3280184M1	1	Pin, Rotor (Dowel)
17	3283930M1	1	Pin, Rotor (Dowel)
18	339291X1	2	Bolt (M8 - 1.25 x 55MM Hex.)
19	3284119M1	1	Bolt (M8 - 1.25 x 70MM Hex. Hd.)
20	390972X1	AR	Washer (8.4 x 17 x 1.6MM Flat)
21	353446X1	AR	Washer (5/16" Lock)
22	3435171M1	1	Oil Filter
23	3284120M1	1	Switch, Oil Pressure
24	3284121M1	1	Gasket, Oil Pump
25	1440203X1	1	Nut (M8 - 1.25 Hex.)
26	3437340M1	1	Bracket, Oil Screen
	3437332M91	1	Screen Assembly, Oil (Part Number For Reference Only, Order Components)
27	3437333M1	1	Pipe, Oil Screen
28	3437334M1	1	Nut (M18 - 1.5MM Hex., Special)
	3437335M91	1	Chamber Assembly, Oil Screen (Part Number For Reference Only, Order Components)
29	3437404M1	2	Screw W/Lock (M5 0 0.8 x 14MM Pad Hd. Machine)
30	3437336M1	1	Chamber, Oil Screen
31	3437337M91	1	Screen Assembly, Oil Chamber
32	1441409X1	1	Nut (M10-1.25 Hex.)
33	339376X1	1	Washer (M10 Lock)
34	3284034M1	1	Bolt (M8 - 1.25 x 12MM Hex. Hd.)

GASKET KITS

2962 306 -1



87-23

651 576 M91 (ISSUE 2) 4/87

## GASKET KITS

Item	Part Number	Qty	Description
	3435603M91	1	Gasket Kit, Upper Overhaul
1	3435113M1	1	Gasket, Head
2	3284113M1	1	Gasket, Water Inlet
3	3283959M1	1	Gasket, Muffler
4	3435122M1	1	Gasket, Intake Manifold
5	3435125M1	3	Gasket, Exhaust Manifold
6	3280025M1	3	Gasket, Fuel Injector
7	3280071M1	1	Gasket, Cylinder Head Cover
8	3284112M1	1	Gasket, Water Outlet
	3284625M91	1	Gasket Kit, Lower Overhaul
18	3284012M1	1	Gasket, Oil Seal Cover
19	3283873M1	1	Gasket, Front Plate
20	3283874M1	1	Gasket, Gear Case
21	3283491M1	1	Gasket, Oil Pan
22	3280105M1	1	Gasket, Drain Plug
23	3284121M1	1	Gasket, Oil Pump
24	3284084M1	1	Gasket, Water Pump
25	3284082M1	1	Gasket, Water Pump Cover
26	3283987M1	1	Gasket, Cover
27	3280194M1	1	"O" Ring, Oil Control Housing
28	3283875M1	1	Gasket, Bearing Housing

**Buy Now**



Our support email:

[ebooklibonline@outlook.com](mailto:ebooklibonline@outlook.com)