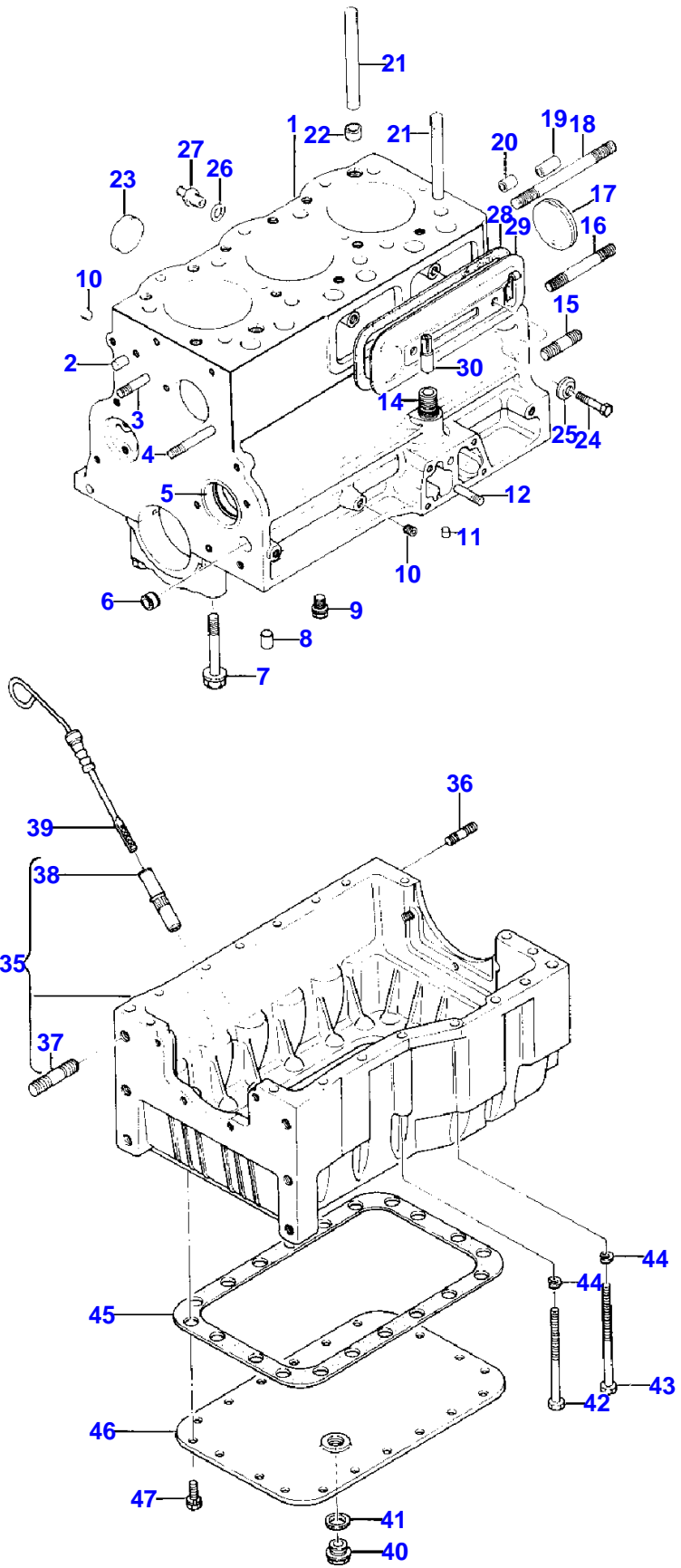


Page Title	Page Number
CYLINDER BLOCK AND OIL PAN	2
CAMSHAFT AND TIMING GEARS	5
PISTONS, CONNECTING RODS, CRANKSHAFT AND FLYWHEEL	6
CYLINDER HEAD, COVER AND ROCKERSHAFT	9
LUBRICATION SYSTEM	10
GASKET SETS	13
COOLING SYSTEM	14
WATER PUMP AND THERMOSTAT HOUSING	17
AIR INTAKE AND EXHAUST	18
FUEL INJECTION SYSTEM	21
FUEL FILTER	22
FUEL INJECTORS	25
FUEL TANK	26
THROTTLE CONTROLS	29
ELECTRICAL WIRING	30
ALTERNATOR	33
STARTER	34
COWL AND INSTRUMENT PANEL	37
INSTRUMENTS AND SWITCHES	38
LIGHTS	41
FRONT AXLE AND SUPPORT - TWO WHEEL DRIVE	42
FRONT AXLE AND HUB - FOUR WHEEL DRIVE	45
FRONT AXLE DRIVE - FOUR WHEEL DRIVE	46
POWER STEERING	49
STEERING LINKS - TWO WHEEL DRIVE	50
POWER STEERING PUMP AND LINES	53
POWER STEERING PUMP	54
DUAL CLUTCH	57
INPUT SHAFT AND CLUTCH HOUSING	58
GEAR SHIFT CONTROLS	61
TRANSMISSION HOUSING	62
TRANSMISSION	65
P.T.O. SHAFT, DRIVE AND EXTENSIONS - 2 WD	69
REAR AXLE - 2 WD	70
FRONT DRIVE AND CONTROLS - 4 WHEEL DRIVE	73
DIFFERENTIAL	74
DIFFERENTIAL LOCK CONTROL	77
BRAKES	78
GASKET SET	81
BRAKE AND CLUTCH CONTROLS	82
HYDRAULIC PUMP AND LINES	85
HYDRAULIC PUMP	86
LIFT COVER, PISTON AND ARMS	89
HYDRAULIC LIFT CONTROL	90
DRAFT CONTROL	93
CONTROL VALVE AND COVER	94
LIFT LINKAGE	97
P.T.O. GUARD AND DRAWBAR	98
HOOD, GRILLE AND FRAME	101
FENDERS AND STEP PLATES	102
SEAT AND FLOOR PLATES	105
WHEELS - 2 WD, 4 WD	106
AUXILIARY HYDRAULICS - USED LATE PRODUCTION TRACTORS	109
AUXILIARY HYDRAULICS - USED EARLY PRODUCTION TRACTORS.	110
SINGLE SPOOL VALVE	113
TWO SPOOL VALVE - 1057358M92, 1057358M91	114
ELECTRIC P.T.O. CLUTCH - FRONT MOUNTED	117
WEIGHT ACCESSORIES	118
R.O.P.S. AND SEAT BELTS	121
LABELS	122
PAINT AND OIL	125

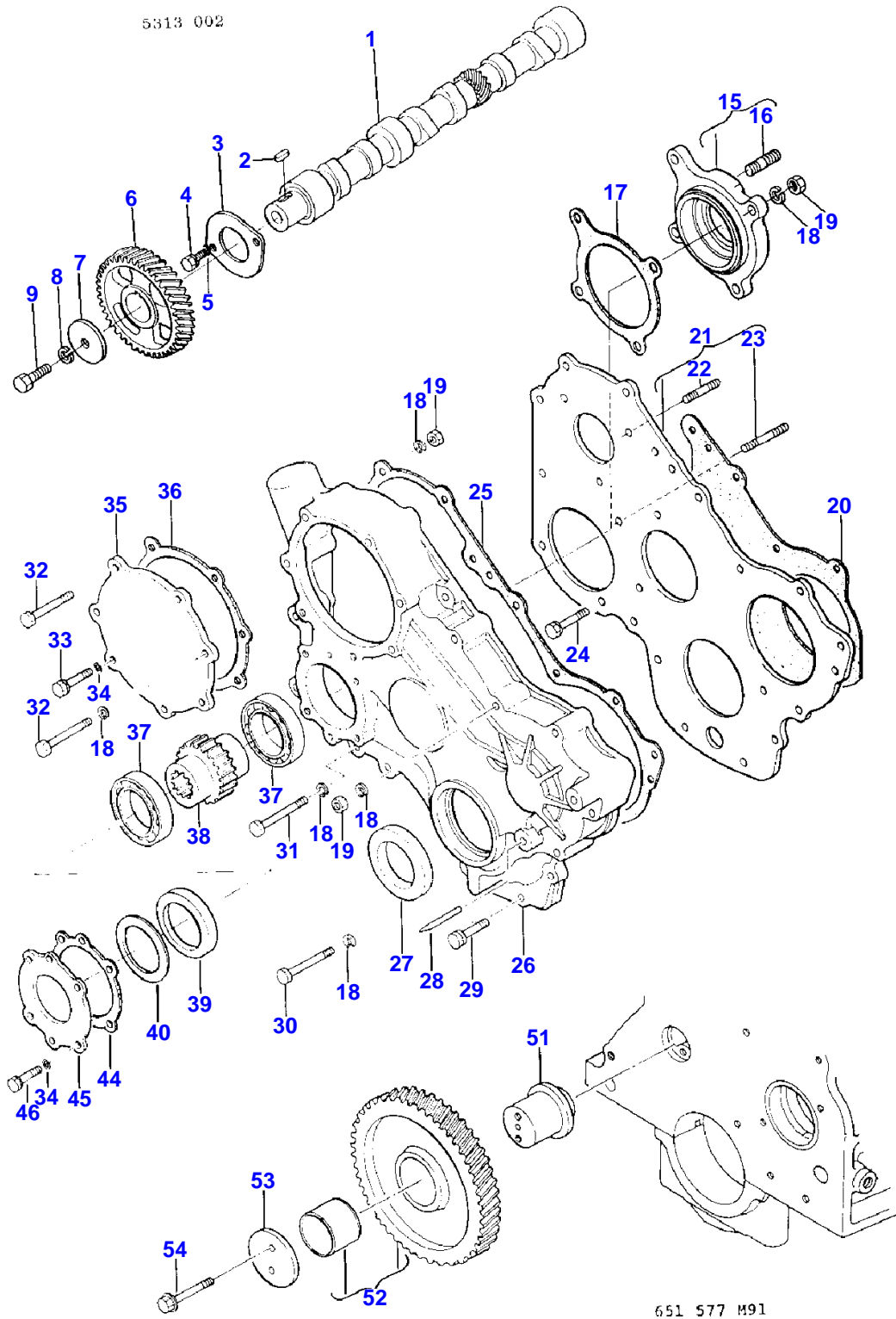
5313 001



CYLINDER BLOCK AND OIL PAN

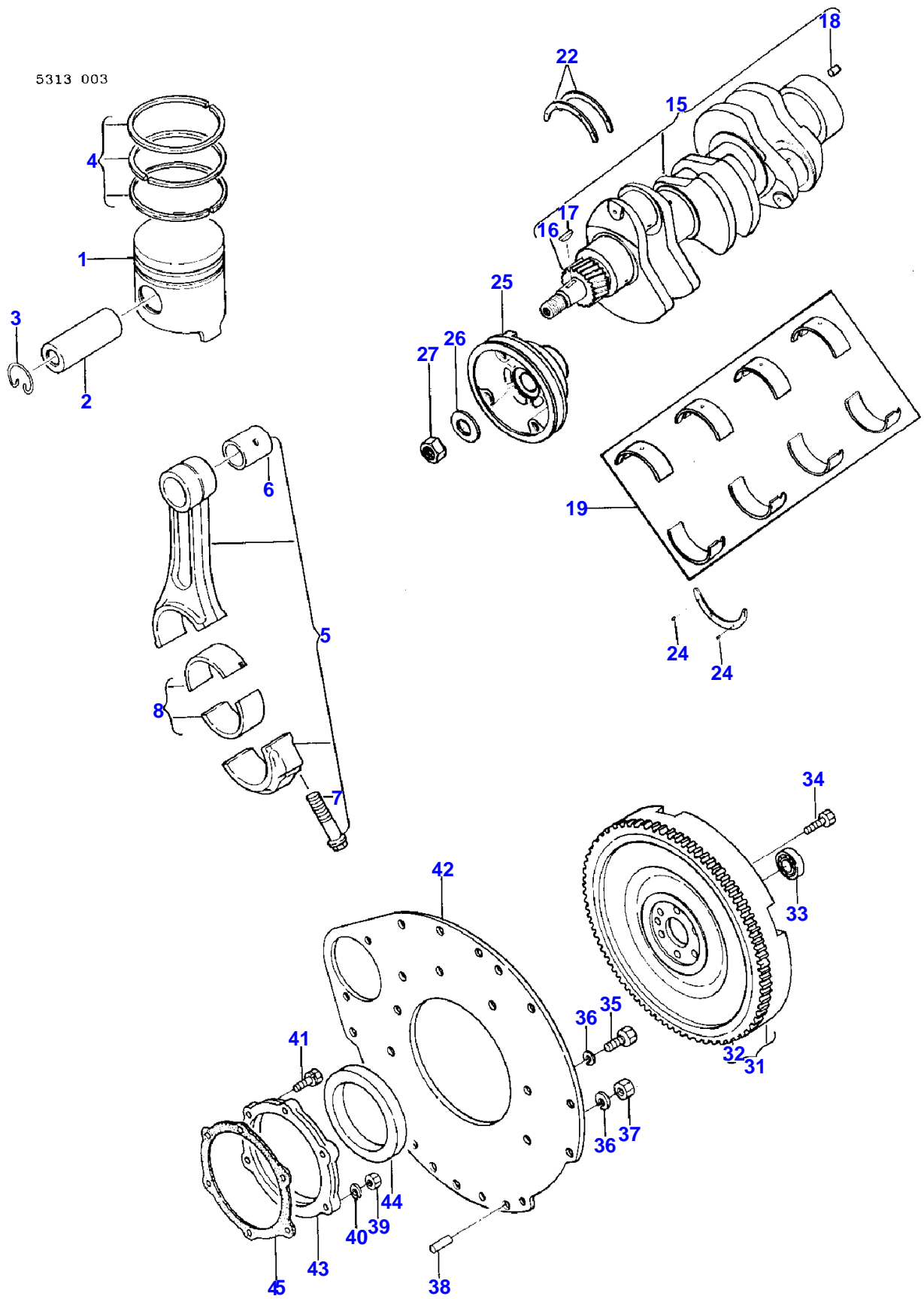
Item	Part Number	Qty	Description	Comments
	3439630M91	1	Engine	
	3439627M91	1	Block	(A)
1	3438390M91	1	Block	
2	1440690X1	2	Pin	
3	3435018M1	2	Stud	
4	3436582M1	3	Stud	
5	3280117M1	3	Bearing	
6	3280120M1	2	Plug	Diameter 14MM
7	3280112M1	8	Bolt	
8	3280500M1	2	Pin	
9	3436585M1	1	Bolt	
10	3283891M1	2	Plug	
11	3280115M1	2	Plug	
12	3284865M1	1	Stud	
14	3280551M1	1	Connector	
15	3436583M1	4	Stud	
16	3436584M1	2	Stud	
17	3280119M1	1	Plug	Diameter 58MM
18	3436591M1	2	Stud	
19	3280934M1	1	Pin	
20	3280932M1	1	Pin	
21	3438369M1	10	Stud	
22	3438392M1	2	Knocker	
23	3280121M1	4	Plug	Diameter 40MM
24	1440712X1	2	Screw	
25	3280072M1	2	Washer	
26	3284067M1	1	Gasket	
27	3436578M1	1	Connector	
28	3280093M1	1	Gasket	
29	3280550M1	1	Cover	
30	3280549M1	1	Rod	
35	3438395M91	1	Pan	
36	3436623M1	3	Stud	
37	3436602M1	6	Stud	
38	3280498M1	1	Adaptor	
39	3436598M1	1	Gauge	
40	3280104M1	1	Plug	
41	3280105M1	1	Gasket	
42	3436599M1	15	Bolt	
43	3438393M1	2	Bolt	
44	353446X1	17	Lock Washer	
45	3438394M1	1	Gasket	
46	3438396M91	1	Plate	
47	339123X1	20	Screw	
			Metric	
		AR	Block	See Page - Reference Number 109

(A)
 SHORT BLOCK INCLUDES CRANKSHAFT, CONNECTING RODS, PISTONS, RINGS,
 BEARINGS, CAMSHAFT AND TIMING
 GEARS



CAMSHAFT AND TIMING GEARS

Item	Part Number	Qty	Description
1	3438411M1	1	Camshaft
2	3280929M1	1	Key
3	3280154M1	1	Plate
4	339123X1	2	Screw Metric
5	353446X1	2	Lock Washer
6	3436643M1	1	Gear
7	3280148M1	1	Washer
8	339376X1	1	Lock Washer
9	1442558X1	1	Bolt
15	3438400M91	1	Housing
16	1440053X1	2	Stud
17	3436619M1	1	Gasket
18	353446X1	13	Lock Washer
19	1440203X1	4	Nut Metric
20	3436612M1	1	Gasket
21	3438399M91	1	Plate
22	3436623M1	3	Stud
23	3438403M1	1	Stud
24	339123X1	3	Screw Metric
25	3436613M1	1	Gasket
26	3436620M91	1	Cover
27	3280091M1	1	Seal
28	3438402M1	1	Point
29	3436605M1	4	Bolt
30	339291X1	3	Bolt Metric
31	339368X1	3	Bolt Metric
32	3436604M1	4	Bolt Metric
33	390379X1	3	Bolt Metric
34	353446X1	7	Lock Washer
35	3436614M1	1	Cover
36	3436615M1	1	Gasket
37	390985X1	2	Bearing Ball
38	3436618M1	1	Gear
39	3436607M1	1	Spacer
40	3436608M1	AR	Washer
	3436609M1	AR	Washer
	3436610M1	AR	Washer
	3436611M1	AR	Washer
44	3436606M1	1	Gasket
45	3437066M1	1	Plate
46	1440711X1	4	Bolt Metric
51	3436592M1	1	Shaft
52	3436595M91	1	Gear
53	3436593M1	1	Washer
54	3436594M1	2	Bolt



MASSEY FERGUSON**MF 1045 COMPACT TRACTOR - 651577EA**

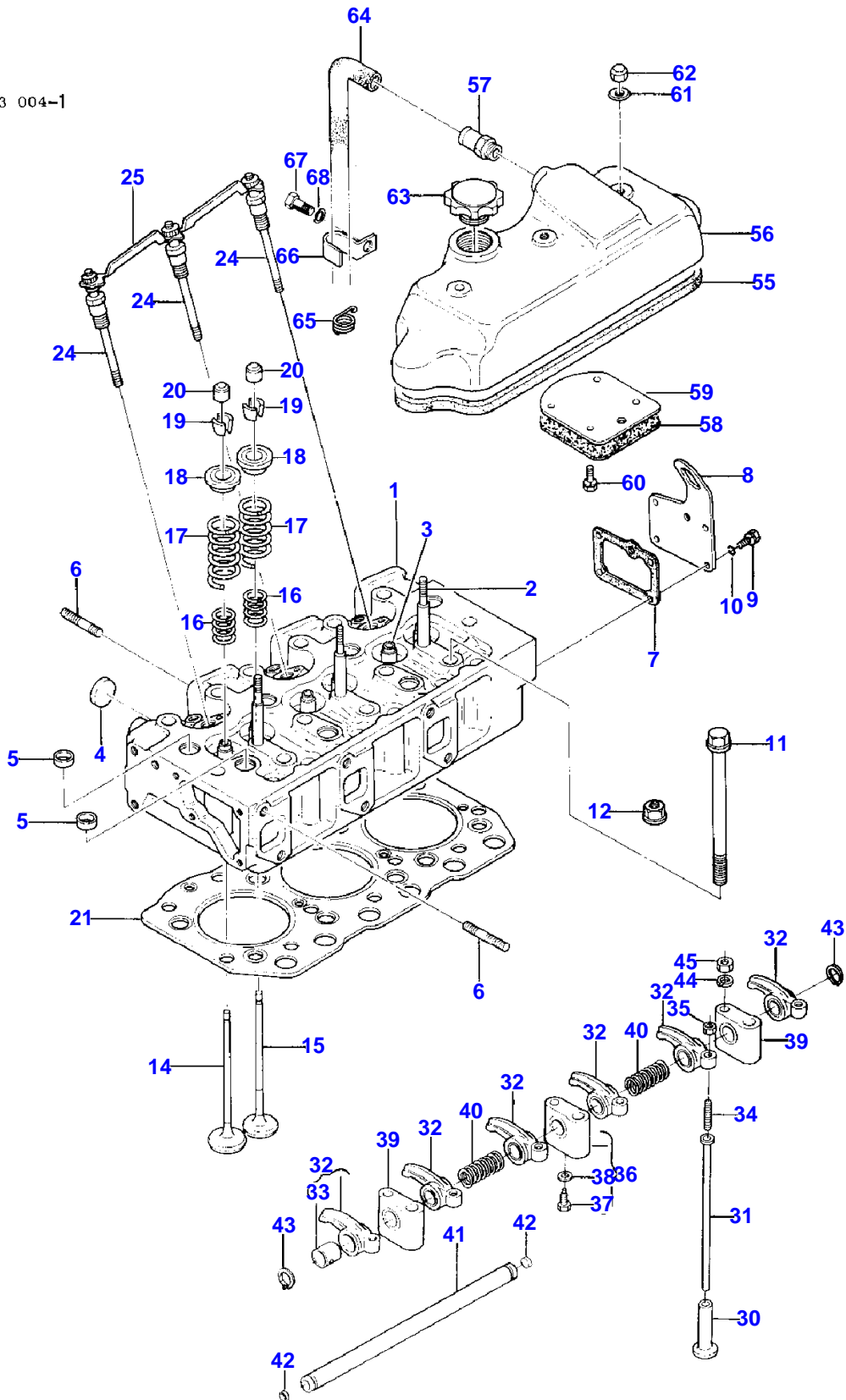
651577EA

PISTONS, CONNECTING RODS, CRANKSHAFT AND FLYWHEEL

6

Item	Part Number	Qty	Description	Comments
1	3438405M1	3	Piston	
	3438719M1	3	Piston	
2	3281148M1	3	Piston Pin	Diameter 28MM
3	3280132M1	6	Ring	
4	3438756M91	3	Ring	
	3438720M1	3	Ring	
5	3281925M91	3	Rod End	
6	3280138M1	1	Bush	
7	3280573M1	2	Bolt	
8	3436628M1	6	Bearing	
	3437289M1	6	Bearing	
	3437290M1	6	Bearing	
15	3436636M91	1	Crank	
16	3436637M1	1	Gear	
17	3280001M1	1	Key	
18	3280931M1	1	Pin	
19	3437220M91	1	Bearing	
	3437221M91	1	Bearing	
	3437222M91	1	Bearing	
22	3437223M91	1	Flange	
	3437224M91	1	Flange	
24	3280947M1	4	Pin	
25	3436635M1	1	Pulley	
26	3280140M1	1	Washer	
27	1441611X1	1	Nut Metric	
31	3436641M91	1	Flywheel	
32	3280141M1	1	Gear	
33	3435718M1	1	Bearing	
34	1442558X1	6	Bolt	
35	339187X1	3	Bolt Metric	
36	339369X1	7	Lock Washer	
37	1440218X1	4	Nut Metric	
38	3435279M1	1	Clevis Pin	
39	1440203X1	3	Nut Metric	
40	353446X1	3	Lock Washer	
41	3436605M1	3	Bolt	
42	3438410M1	1	Plate	
43	3436639M91	1	Cover	
44	3436640M1	1	Seal	
45	3280096M1	1	Gasket	

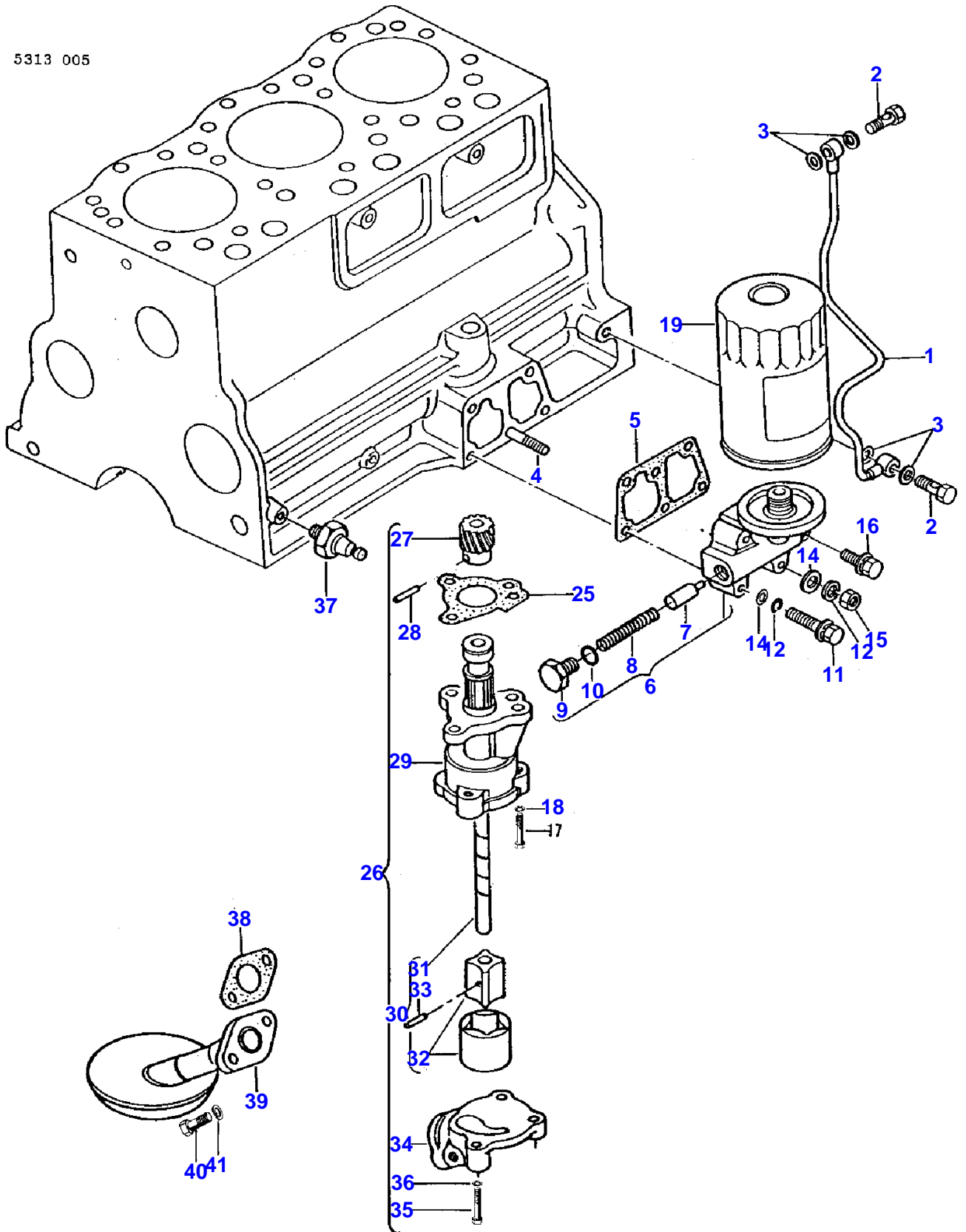
5313 004-1



CYLINDER HEAD, COVER AND ROCKERSHAFT

Item	Part Number	Qty	Description	Comments
1	3438372M91	1	Head	
2	3280054M1	3	Stud	
3	3436534M1	6	Guide	
4	3280058M1	3	Plug	Diameter 18MM
5	3280312M1	7	Plug	Diameter 20MM
6	3280059M1	12	Stud	
7	3436533M1	1	Gasket	
8	3280055M1	1	Cover	
9	390379X1	4	Bolt Metric	
10	353446X1	4	Lock Washer	
11	3438370M1	3	Bolt	
12	3438371M1	10	Nut	
14	3438364M1	3	Valve	
15	3438365M1	3	Valve	
16	3280049M1	6	Spring	
17	3280048M1	6	Spring	
18	3280050M1	6	Retainer	
19	3280023M1	12	Lock	
20	3280051M1	6	Seal	
21	3438366M1	1	Gasket	
	3438367M1	1	Gasket	
	3438368M1	1	Gasket	
24	3438450M1	3	Plug	
25	3438451M1	1	Plate	
30	3280145M1	6	Valve	
31	3436645M1	6	Rod	
32	3280063M91	6	Arm	
33	3280975M1	1	Bush	
34	3280067M1	1	Bolt	
35	3280070M1	1	Nut	
36	3438415M91	1	Bracket	
37	3280068M1	1	Bolt	
38	3435189M1	1	Gasket	
39	3438413M1	2	Bracket	
40	3280066M1	2	Spring	
41	3438414M91	1	Shaft	
42	3436648M1	2	Plug	
43	1441970X1	2	Circlip	
44	339376X1	3	Lock Washer	
45	1441409X1	3	Nut Metric	
55	3436530M1	1	Gasket	
56	3438373M91	1	Cover	
57	3436549M1	1	Pipe	
58	3436548M1	1	Gasket	
59	3436547M1	1	Plate	
60	3436545M1	4	Bolt	
61	3280072M1	3	Washer	
62	3005908X1	3	Nut	
63	3436526M1	1	Cap	
64	3436528M1	1	Hose	
65	3436529M1	1	Support	
66	3280468M1	1	Clamp	
67	3436522M1	1	Bolt Metric	
68	339376X1	1	Lock Washer	

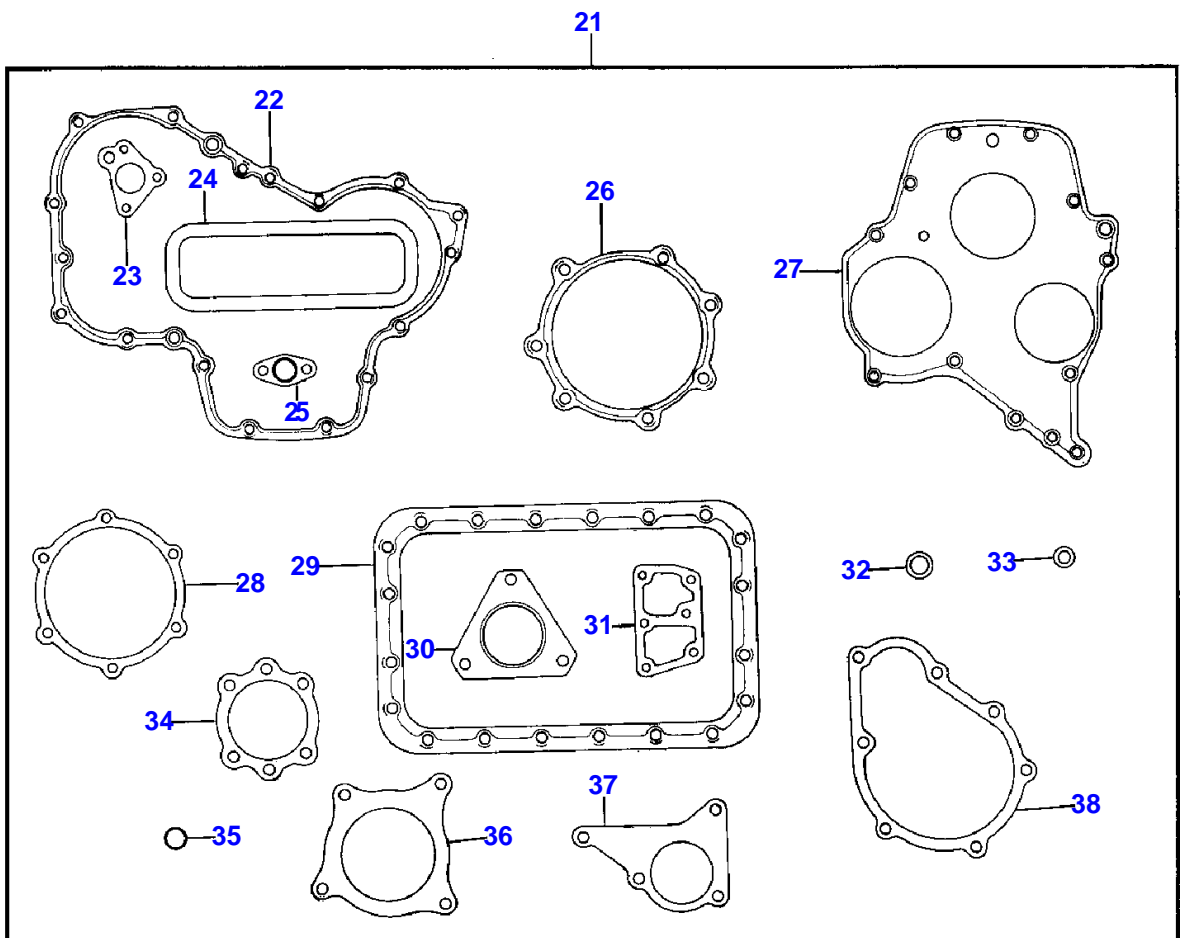
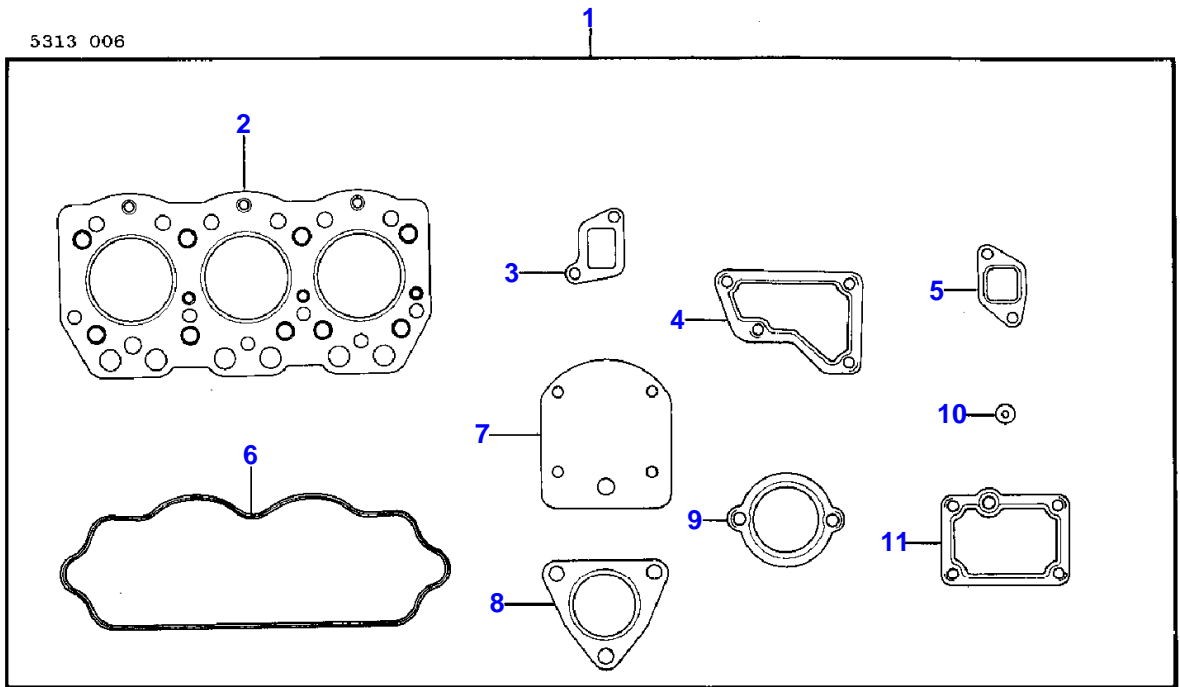
5313 005



LUBRICATION SYSTEM

Item	Part Number	Qty	Description	Comments
1	3436712M91	1	Tube	
2	3280188M1	2	Bolt	
3	3436695M1	4	Short Engine	
4	3284865M1	1	Stud	
5	3280187M1	1	Gasket	
6	3280189M91	1	Head	
7	3280191M1	1	Insert	
8	3280192M1	1	Spring	
9	3280193M1	1	Bolt	
10	3280194M1	1	O Ring	
11	1440712X1	2	Screw	
12	353446X1	3	Lock Washer	
14	390972X1	3	Washer Metric	
15	1440203X1	1	Nut Metric	
16	3436696M1	2	Bolt	
17	339123X1	3	Screw Metric	
18	353446X1	3	Lock Washer	
19	3280185M91	1	Filter	
25	3436697M1	1	Gasket	
26	3436704M91	1	Pump	
27	3436707M1	1	Gear	
28	3280183M1	1	Pin	
29		1	Body	Not serviced, order 3436704M91
30	3436708M91	1	Shaft	
31		1	Shaft	Not serviced, order 3436708M91
32		1	Rotor	Not serviced, order 3436708M91
33		1	Pin	Not serviced, order 3436708M91
34	3436706M1	1	Cover	
35	391898X1	3	Bolt Metric	
36	353446X1	3	Lock Washer	
37	3284120M1	1	Switch,Indirect	
38	3436698M1	1	Gasket	
39	3436699M91	1	Tube	
40	339123X1	2	Screw Metric	
41	353446X1	2	Lock Washer	

5313 006



GASKET SETS

Item	Part Number	Qty	Description
1	3438711M91	1	Gasket
2	3438366M1	1	Gasket
	3438367M1	1	Gasket
	3438368M1	1	Gasket
3	3438379M1	3	Gasket
4	3436689M1	1	Gasket
5	3438380M1	3	Gasket
6	3436530M1	1	Gasket
7	3436548M1	1	Gasket
8	3280084M1	1	Gasket
9	3284112M1	1	Gasket
10	3438439M1	1	Gasket
11	3436533M1	1	Gasket
21	3438712M91	1	Gasket
22	3436613M1	1	Gasket
23	3436697M1	1	Gasket
24	3280093M1	1	Gasket
25	3436698M1	1	Gasket
26	3436615M1	1	Gasket
27	3436612M1	1	Gasket
28	3280096M1	1	Gasket
29	3438394M1	1	Gasket
30	3438419M1	1	Gasket
31	3280187M1	1	Gasket
32	3480105M1	1	Gasket
33	3436695M1	4	Short Engine
34	3436606M1	1	Gasket
35	3280194M1	1	O Ring
36	3436619M1	1	Gasket
37	3436670M1	1	Gasket
38	3436673M1	1	Gasket

Buy Now



Our support email:

ebooklibonline@outlook.com