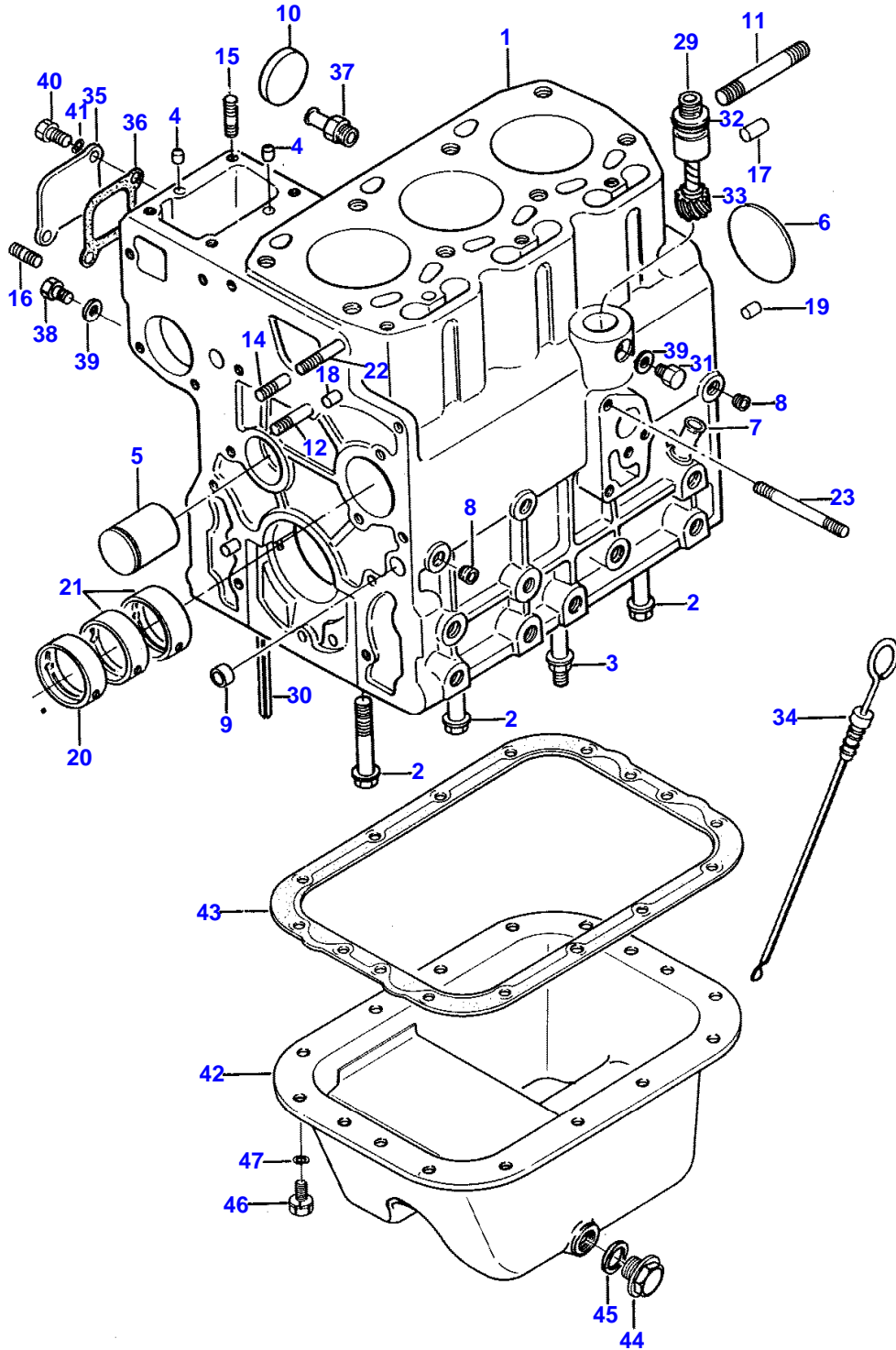


Page Title	Page Number
CYLINDER BLOCK AND OIL PAN	2
CAMSHAFT, TIMING GEARS AND COVER	5
PISTONS, CONNECTING RODS, CRANKSHAFT AND FLYWHEEL	6
CYLINDER HEAD COVER AND ROCKER SHAFT	9
LUBRICATION SYSTEM	10
OIL COOLER	13
GASKET KITS	14
RADIATOR	17
WATER PUMP AND OUTLET	18
AIR CLEANER, MANIFOLD AND MUFFLER	21
FUEL TANK	22
FUEL INJECTION SYSTEM	25
THROTTLE LINKAGE	26
GOVERNOR	29
ELECTRICAL WIRING	30
ALTERNATOR	33
STARTER	34
COWL AND INSTRUMENT PANEL	37
INSTRUMENTS AND SWITCHES	38
LIGHTS	41
FRONT AXLE AND HUB	42
FRONT AXLE AND HUB	45
FRONT AXLE DRIVE	46
STEERING	49
STEERING LINKS	50
POWER STEERING PUMP, LINES AND CYLINDER	53
POWER STEERING PUMP	54
CYLINDER ASSEMBLY - POWER STEERING ASSIST	57
CLUTCH HOUSING AND INPUT SHAFT	58
DUAL CLUTCH	61
MAIN SHIFT CONTROLS	62
P.T.O. SHIFT CONTROLS	65
SUB SHIFT CONTROLS	66
FRONT DRIVE AND CREEPER SHIFT CONTROLS	69
P.T.O. DRIVE SHAFT	70
TRANSMISSION HOUSING AND MAIN SHAFT	73
TRANSMISSION	74
REAR AXLE	77
FRONT DRIVE PINION SHAFT	78
DIFFERENTIAL	81
DIFFERENTIAL LOCK CONTROLS	82
REAR P.T.O. SHAFT	85
P.T.O. EXTENSION	86
BRAKES	89
GASKET SET	90
BRAKE PEDALS AND CLUTCH CONTROLS	93
HYDRAULIC PUMP AND LINES	94
HYDRAULIC PUMP	97
HYDRAULIC LIFT COVER, PISTON AND ARMS	98
HYDRAULIC LIFT CONTROL	101
DRAFT CONTROL	102
CONTROL VALVE AND COVER ASSEMBLY	105
LIFT LINKAGE	106
P.T.O. GUARD AND DRAWBAR	109
HOOD, GRILLE AND FRAME	110
FENDERS AND STEP PLATES	113
SEAT AND FLOORS	114
WHEELS AND RIMS	117
R.O.P.S.	118
AUXILIARY HYDRAULICS - USED LATE PRODUCTION TRACTORS	121
AUXILIARY HYDRAULICS - USED EARLY PRODUCTION TRACTOR	122
SINGLE SPOOL VALVE	125
TWO SPOOL VALVE	126
ELECTRIC P.T.O. CLUTCH	129
EMBLEMS AND LABELS	130
PAINT AND OIL - RED ENAMEL (M-1041)	133

2

CYLINDER BLOCK AND OIL PAN

5312 001



1ST PRINT

651 578 M91 (ISSUE 1) 9/86

CYLINDER BLOCK AND OIL PAN

Item	Part Number	Qty	Description	Comments
	3439543M91	1	Engine	
	3439542M91	1	Engine	(A)
1	3438774M91	1	Cylinder Block	
2	3605087M1	7	Bolt	(B)
	3284003M1	7	Bolt	(C)
3	3605088M1	1	Bolt	(B)
	3437341M1	1	Bolt	(C)
4	3284004M1	2	Locator	
5	3284006M1	1	Shaft	
6	3284005M1	1	Plate	Diameter 55 MM
7	3280498M1	1	Adaptor	
8	3283891M1	2	Plug	1/8"
9	3280120M1	2	Plug	Diameter 14 MM
10	3280121M1	3	Plug	Diameter 40 MM
11	3438777M1	2	Stud	
12	3435018M1	1	Stud	M8 - 1.5 X 55 MM
14	3435694M1	1	Stud	M8 - 1.5 X 35 MM
15	3284846M1	4	Stud	M8 - 1.5 X 22 MM
16	3284845M1	1	Stud	M8 - 1.5 X 20 MM
17	1440690X1	2	Pin	10 X 22 MM
18	3283991M1	2	Locator	
19	3435645M1	1	Pin	
20	3284001M1	1	Bush	
21	3284002M1	2	Bush	
22	3435695M1	2	Stud	M8 - 1.5 X 70 MM
23	3438776M1	1	Stud	M8 - 1.5 X 75 MM
29	3283980M1	1	Guide	
30	3283981M1	4	Gasket	
31	3283982M1	1	Screw	
32	3283983M1	1	Gasket	
33	3283984M1	1	Worm Gear	
34	3435134M1	1	Gauge	
35	3605113M1	1	Cover	(D)
	3283986M1	1	Plate	(E)
36	3283987M1	1	Gasket	
37	3283988M1	1	Union	
38	3283978M1	1	Screw	
39	3283538M1	2	Gasket	
40	339560X1	2	Screw Metric	
41	353441X1	2	Lock Washer	
42	3438780M91	1	Pan	
43	3283491M1	1	Gasket	
44	3280104M1	2	Plug	
45	3280105M1	2	Gasket	
46	1440711X1	16	Bolt Metric	
47	353446X1	16	Lock Washer	

(A)
SHORT BLOCK INCLUDES, STRIPPED BLOCK, CRANKSHAFT, CONNECTING RODS, PISTONS, RINGS, BEARING, CAMSHAFT, AND TIMING GEARS.

(B)
Two Wheel Drive
From Serial or Engine Number 00415
Four Wheel Drive
From Serial or Engine Number 40498

(C)
Two Wheel Drive
Up to Serial or Engine Number 00415
Four Wheel Drive
Up to Serial or Engine Number 40498

(D)
Two Wheel Drive
From Serial or Engine Number 540
Four Wheel Drive
From Serial or Engine Number 40628

(E)
Two Wheel Drive
Up to Serial or Engine Number 540
Four Wheel Drive

MASSEY FERGUSON

MF 1035 COMPACT TRACTOR - 651578EA

651578EA

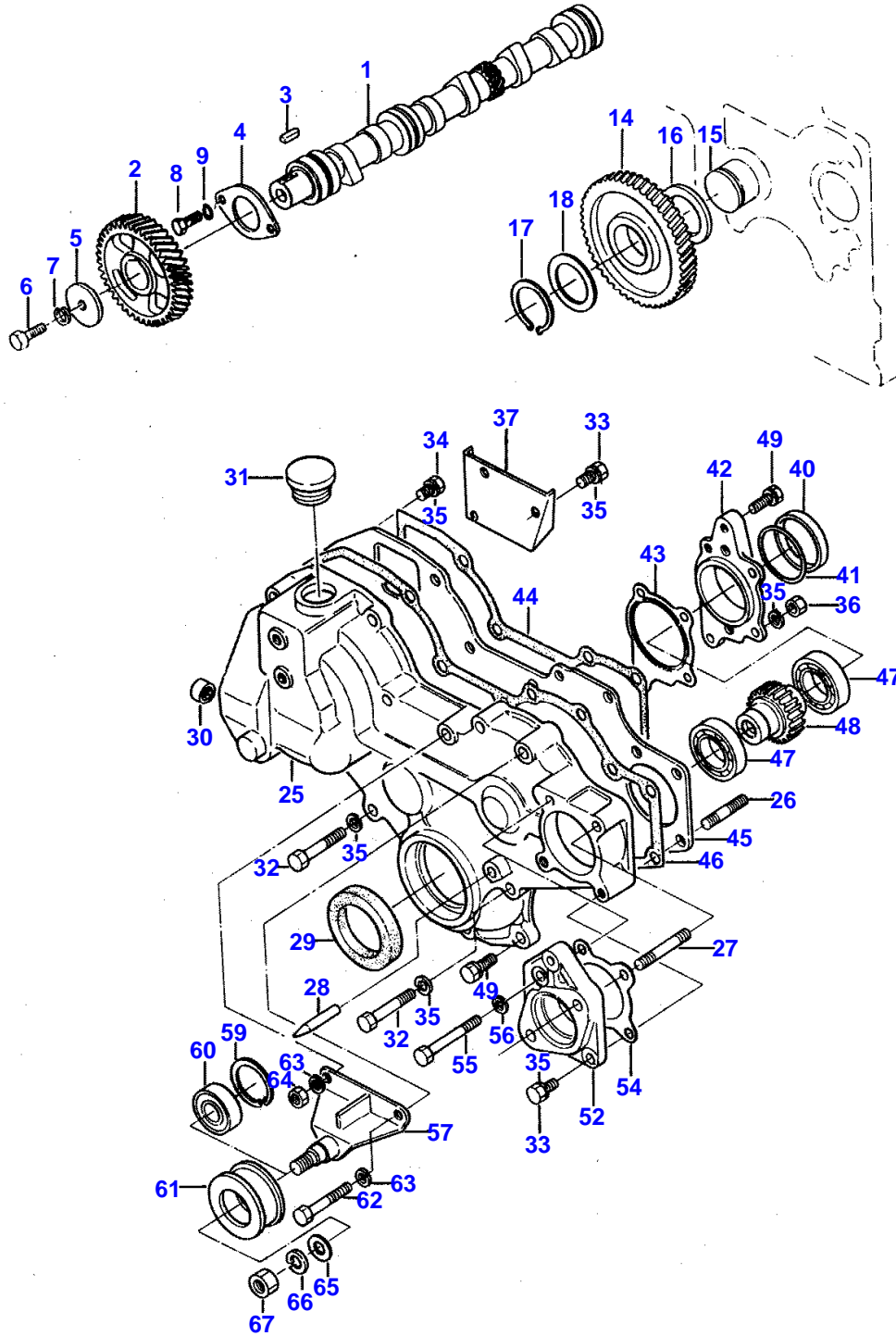
CYLINDER BLOCK AND OIL PAN

2

Item	Part Number	Qty	Description	Comments
				Up to Serial or Engine Number 40628

CAMSHAFT, TIMING GEAR AND COVER

5312 002



1ST PRINT

651 578 M91 (ISSUE 1) 9/86

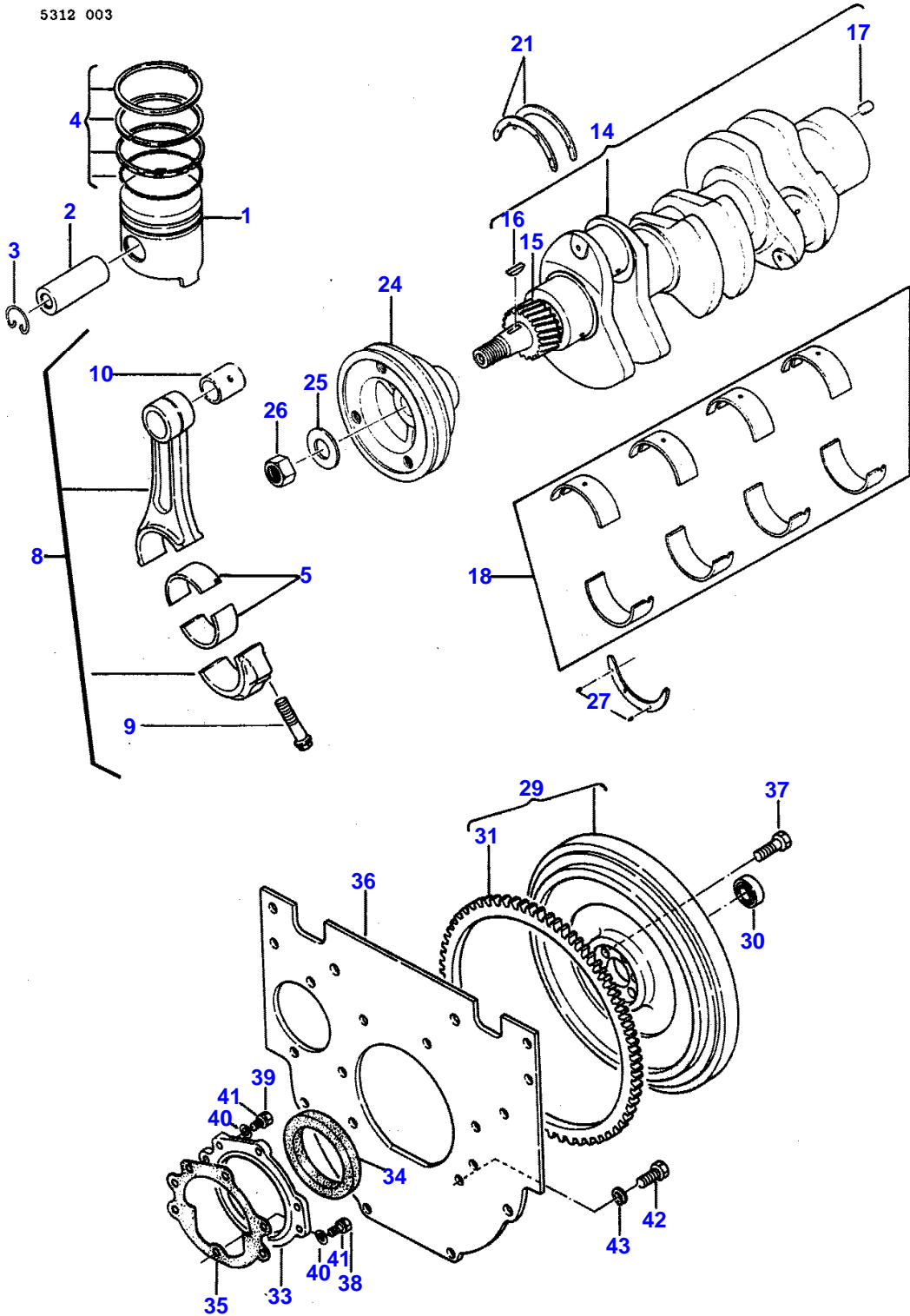
CAMSHAFT, TIMING GEARS AND COVER

Item	Part Number	Qty	Description	Comments
1	3283523M1	1	Camshaft	
2	3283524M1	1	Pinion	
3	3283525M1	1	Key	
4	3283526M1	1	Plate	
5	3280148M1	1	Washer	
6	1442558X1	1	Bolt	
7	339376X1	1	Lock Washer	
8	390379X1	2	Bolt Metric	
9	353446X1	2	Lock Washer	
14	3283864M91	1	Pinion	
15	3284006M1	1	Shaft	
16	3283868M1	1	Spacer	
17	3283863M1	1	Clip	
18	3283865M1	AR	Thrust Washer	
	3283866M1	AR	Thrust Washer	
	3283867M1	AR	Thrust Washer	
	3435706M91	1	Cover	
25		1	Cover	Not serviced, order 3438782M91
26	3283884M1	2	Stud	M8 - 1.5 X 30 MM
27	3435710M1	2	Stud	
28	3438402M1	1	Point	
29	3283885M1	1	Gasket	
30	3283886M1	2	Bush	
31	3437987M1	1	Cap	
32	339168X1	3	Bolt Metric	
33	339123X1	3	Screw Metric	
34	390379X1	6	Bolt Metric	
35	353446X1	AR	Lock Washer	
36	1440203X1	3	Nut Metric	
37	3283883M1	1	Plate	
40	3435699M1	1	Spacer	
41	3435701M1	AR	Washer	
	3435702M1	AR	Washer	
	3435703M1	AR	Washer	
42	3435697M1	1	Case Assy	
43	3435704M1	1	Gasket	
44	3283873M1	1	Gasket	
45	3435711M1	1	Plate	
46	3283874M1	1	Gasket	
47	339065X1	2	Bearing Ball	
48	3435700M1	1	Pinion	
49	3283872M1	5	Bolt	
52	3435698M1	1	Flange	
54	3435705M1	1	Gasket	
55	3435696M1	1	Screw	
56	353446X1	1	Lock Washer	
57	3435712M91	1	Support	
	3435716M91	1	Support	
59	3283774M1	1	Bush	
60	3435718M1	1	Bearing	
61		1	Pulley	Not serviced, order 3435716M91
62	339291X1	1	Bolt Metric	
63	353446X1	2	Lock Washer	
64	1440203X1	1	Nut Metric	
65	390735X1	1	Washer Metric	
66	339369X1	1	Lock Washer	
67	1440218X1	1	Nut Metric	

6

PISTONS, CONNECTING RODS, CRANKSHAFT AND FLYWHEEL

5312 003



1ST PRINT

651 578 M91 (ISSUE 1) 9/86

MASSEY FERGUSON**MF 1035 COMPACT TRACTOR - 651578EA**

651578EA

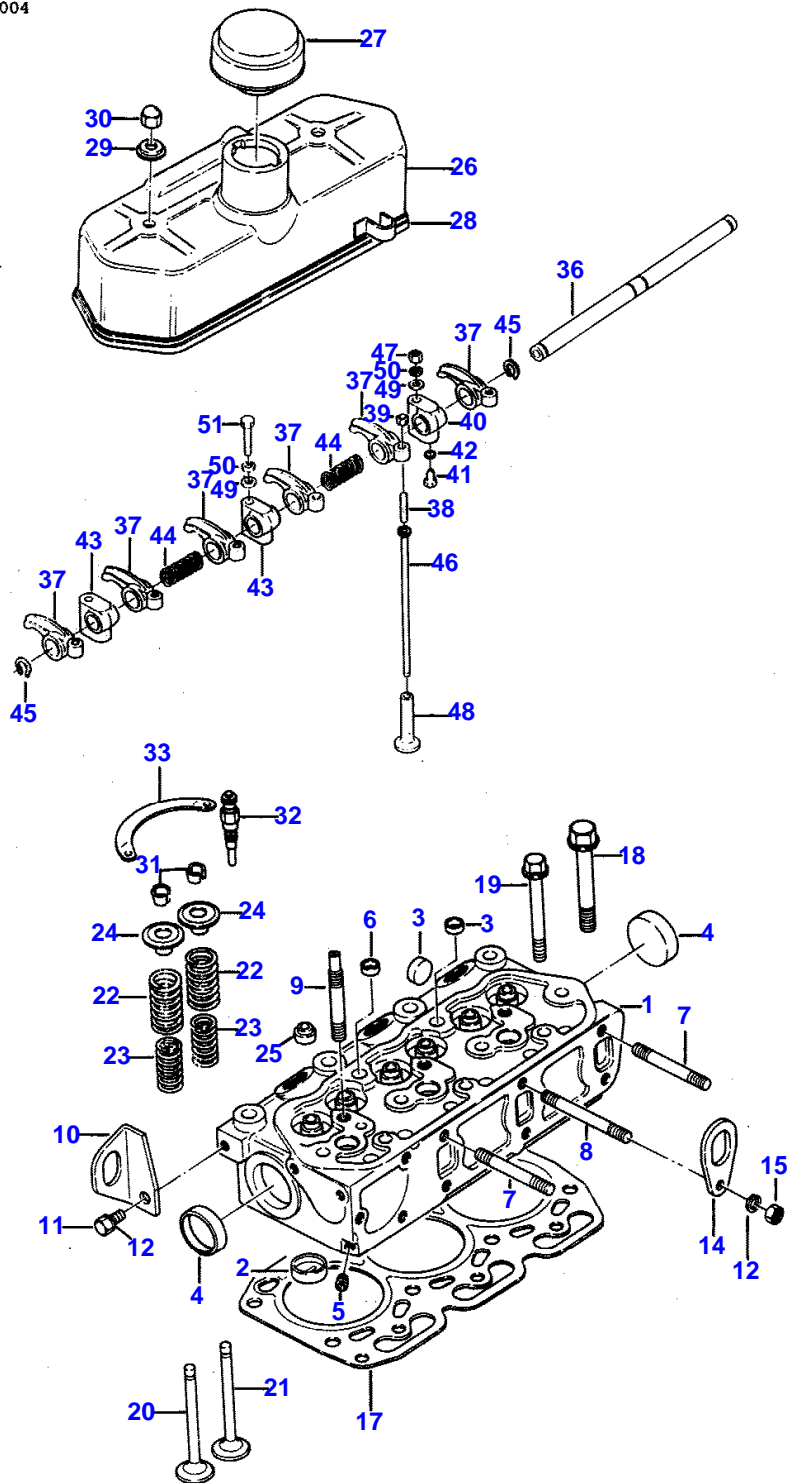
PISTONS, CONNECTING RODS, CRANKSHAFT AND FLYWHEEL**6**

Item	Part Number	Qty	Description	Comments
1	3438785M1	3	Piston	
	3439631M1	3	Piston	+ .50 MM
2	3435724M1	3	Piston Pin	
3	3281268M1	6	Segment	
4	3439536M91	3	Kit, Ring	
	3439537M91	3	Kit, Piston Ring	+ .50 MM
5	3283499M1	6	Bearing	
	3284635M1	6	Bearing	- .25 MM
	3284636M1	6	Bearing	- .50 MM
8	3438788M91	3	Rod	
9	3283503M1	2	Bolt	
10	3282524M1	1	Bush	
14	3438792M91	1	Crankshaft	
15	3283512M1	1	Pinion	
16	3280001M1	2	Key	
17	3280931M1	1	Pin	
18	3284626M91	1	Kit, Bearing	
	3284627M91	1	Kit, Bearing	- .25 MM
	3284628M91	1	Kit, Bearing	- .50 MM
21	3284629M91	1	Parts Pack	
	3284630M91	1	Parts Pack	+ .25 MM
	3284631M91	1	Parts Pack	+ .50 MM
24	3438791M1	1	Pulley	
25	3280140M1	1	Washer	
26	1441611X1	1	Nut Metric	
27	3280947M1	4	Pin	
29	3438797M91	1	Flywheel Assy.	
30	3435646M1	1	Bearing Assy	
31	3283516M1	1	Annular Gear	
33	3438798M91	1	Cover	
34	3438801M1	1	Seal	
35	3284012M1	1	Gasket	
36	3438795M1	1	Plate	
37	1441302X1	6	Bolt Metric	
38	339337X1	1	Screw Metric	
39	391931X1	4	Bolt Metric	
40	390972X1	5	Washer Metric	
41	353446X1	5	Lock Washer	
42	1441134X1	6	Screw Metric	
43	339376X1	6	Lock Washer	

5312 004

CYLINDER HEAD, COVER AND ROCKERSHAFT

9



1ST PRINT

651 578 M91 (ISSUE 1) 9/86

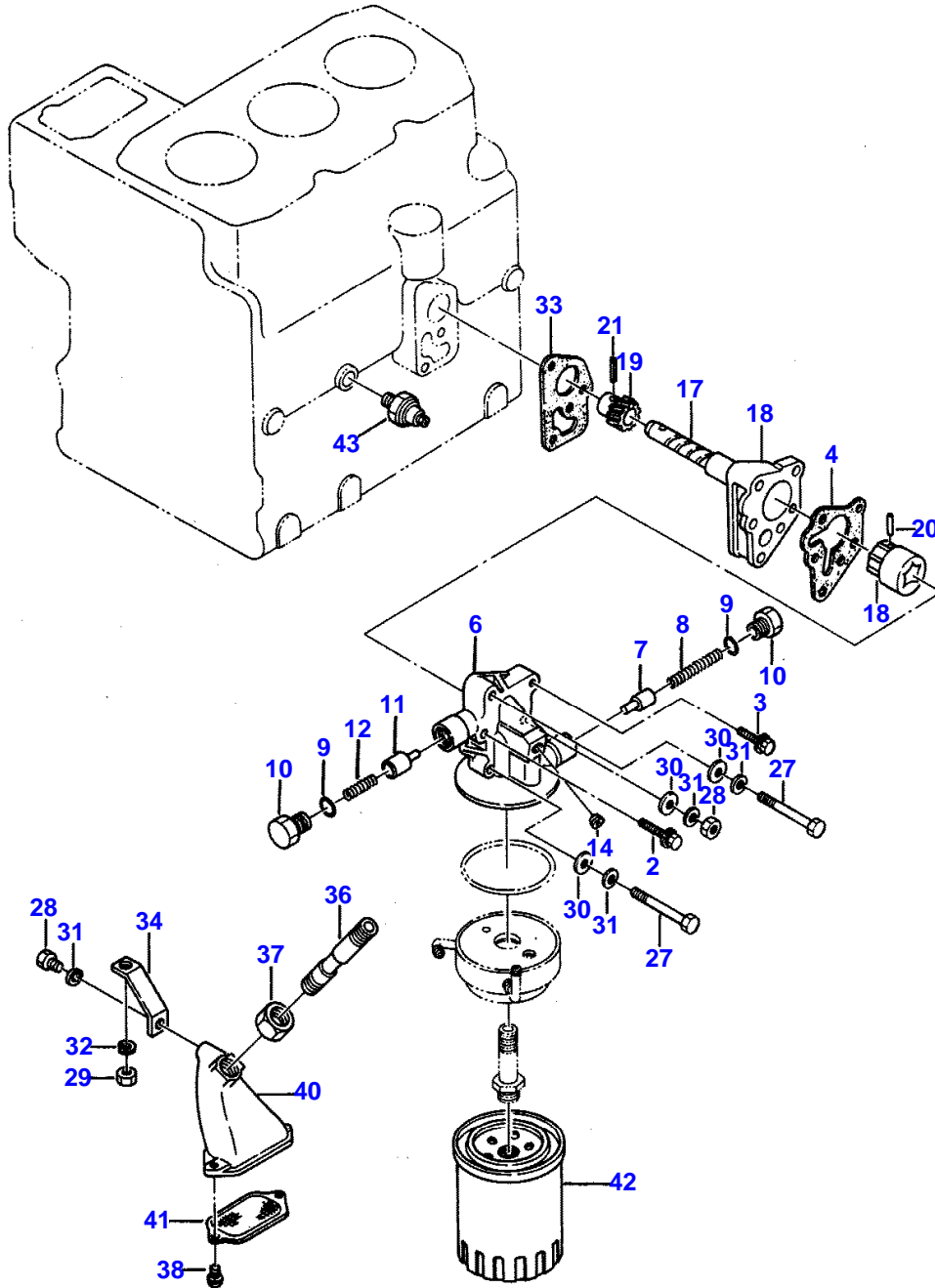
CYLINDER HEAD COVER AND ROCKER SHAFT

Item	Part Number	Qty	Description	Comments
1	3438760M91	1	Cylinder Head	
2	3435117M1	3	Insert	
3	3280312M1	6	Plug	Diameter 20 MM
4	3280121M1	2	Plug	Diameter 40 MM
5	3283891M1	1	Plug	1/8"
6	3280974M1	2	Plug	Diameter 16 MM
7	3283950M1	4	Stud	M8 - 1.5 X 65 MM
8	3435118M1	2	Stud	
9	3283952M1	2	Stud	M8 X 1.25 X M10 X 1.25 X 95 MM
10	3281257M1	1	Angle	
11	390379X1	1	Bolt Metric	
12	353446X1	2	Lock Washer	
14	3283944M1	1	Support	
15	1440203X1	1	Nut Metric	
17	3438759M1	1	Gasket	
18	3283938M1	8	Bolt	
19	3283939M1	3	Bolt	
20	3438757M1	3	Valve	
21	3438758M1	3	Valve	
22	3435111M1	6	Spring	
23	3435112M1	6	Spring	
24	3283935M1	6	Retainer	
25	3283936M1	6	Gasket	
26	3435669M91	1	Cover	
27	3280074M1	1	Cap	
28	3280071M1	1	Gasket	
29	3280072M1	2	Washer	
30	3005908X1	2	Nut	
31	3280023M1	12	Lock	
32	3284128M1	3	Glow Plug	
33	3284129M1	2	Plate	
	3283527M92	1	Rocker Shaft Ass	
36	3283529M91	1	Shaft	
	3283530M91	6	Arm	
37	3283536M1	1	Arm	
38	3283537M1	1	Screw	
39	1440203X1	1	Nut Metric	
	3283531M91	1	Support	
40	3283539M1	1	Support	
41	3283540M1	1	Bolt	
42	3283538M1	1	Gasket	
43	3283532M1	2	Support	
44	3283533M1	2	Spring	
45	1441970X1	2	Circlip	19 MM X 1.2 MM
46	3438802M1	6	Rod	
47	1441409X1	2	Nut Metric	
48	3280145M1	6	Valve	
49	390734X1	2	Washer Metric	
50	339376X1	2	Lock Washer	
51	3437309M1	1	Bolt Metric	

10

LUBRICATION SYSTEM

5312 005



1ST PRINT

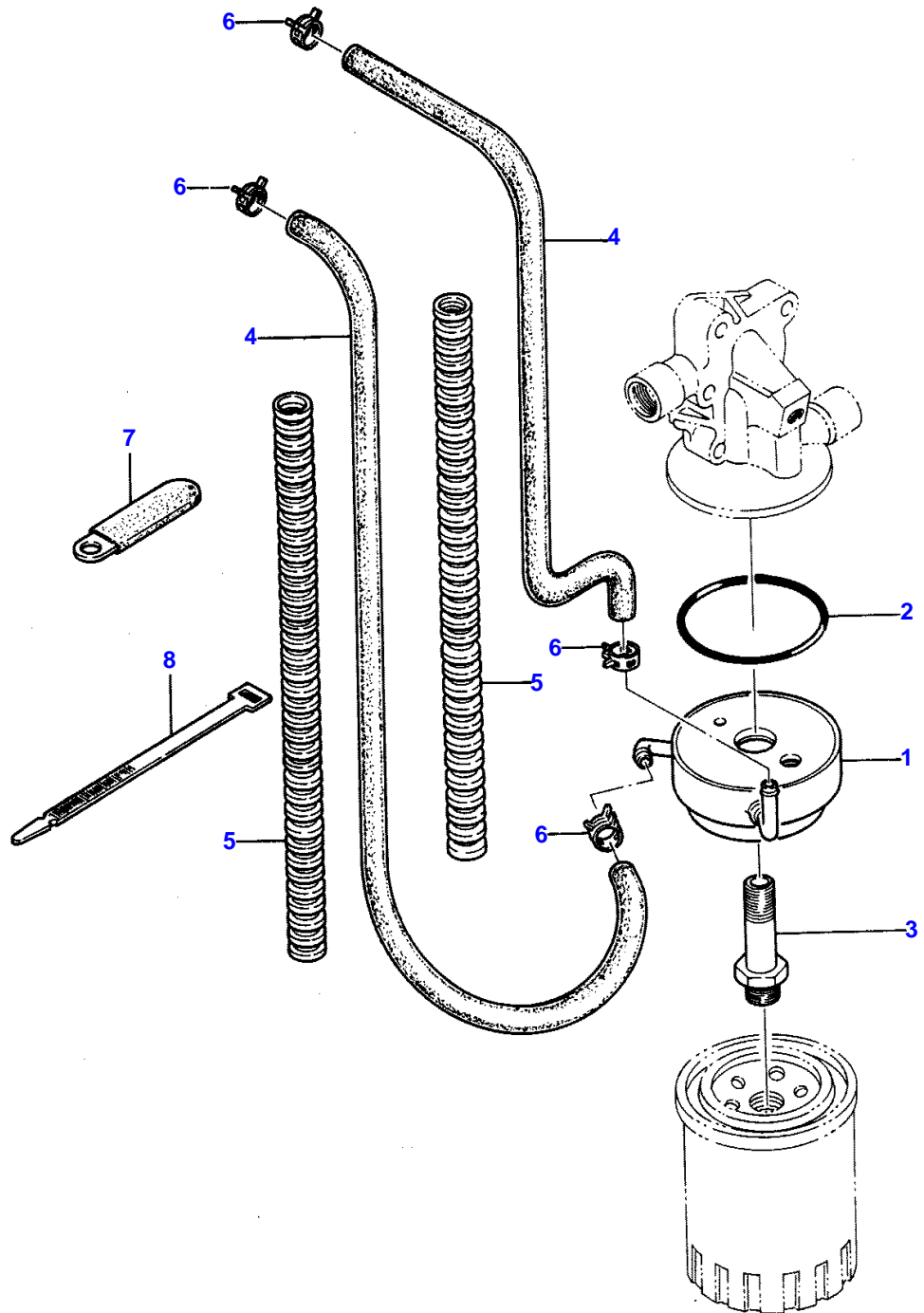
651 578 M91 (ISSUE 1) 9/86

LUBRICATION SYSTEM

Item	Part Number	Qty	Description	Comments
	3438858M91	1	Kit, Pump	
2	3283925M1	1	Bolt	(A)
	3438859M1	1	Bolt	(B)
3	3283925M1	1	Bolt	
4	3283926M1	1	Gasket	0.1 MM
	3438860M91	1	Cover	
6			Cover	Not serviced, order 3438860M91
7	3438861M1	1	Relief Valve	
8	3438862M1	1	Spring	
9	3280194M1	2	O Ring	
10	3280193M1	2	Bolt	
11	3438864M1	1	Relief Valve	
12	3438865M1	1	Spring	
14	3437088M1	1	Plug	1/4"
	3283928M91	1	Oil Pump	
16		1	Body	Not serviced, order 3283928M91
17		1	Shaft	Not serviced, order 3283928M91
18		1	Rotor	Not serviced, order 3283928M91
19	3283929M1	1	Pinion	
20	3280184M1	1	Pin	
21	3283930M1	1	Pin	
26	3284034M1	1	Bolt	
27	3436604M1	2	Bolt Metric	
28	1440203X1	1	Nut Metric	
29	1441409X1	1	Nut Metric	
30	390972X1	3	Washer Metric	
31	353446X1	4	Lock Washer	
32	339376X1	1	Lock Washer	
33	3284121M1	1	Gasket	
34	3437340M1	1	Bracket	
	3437332M91	1	Screen	
36	3437333M1	1	Pipe	
37	3437334M1	1	Nut	
		1	Chamber	
39	3437404M1	2	Screw	
40	3437336M1	1	Chamber	
41	3437337M91	1	Screen	
42	3438856M1	1	Oil Filter	
43	3284120M1	1	Switch, Indirect	(C)
	3438857M1	1	Switch	(D)
				(A)
				USED LATE PRODUCTION
				(B)
				USED EARLY PRODUCTION TRACTORS.
				(C)
				Two Wheel Drive
				From Serial or Engine Number 101
				Four Wheel Drive
				From Serial or Engine Number 40101
				(D)
				Two Wheel Drive
				Up to Serial or Engine Number 101
				Four Wheel Drive
				Up to Serial or Engine Number 40101

OIL COOLER

5312 006



1ST PRINT

651 578 M91 (ISSUE 1) 9/86

Buy Now



Our support email:

ebooklibonline@outlook.com