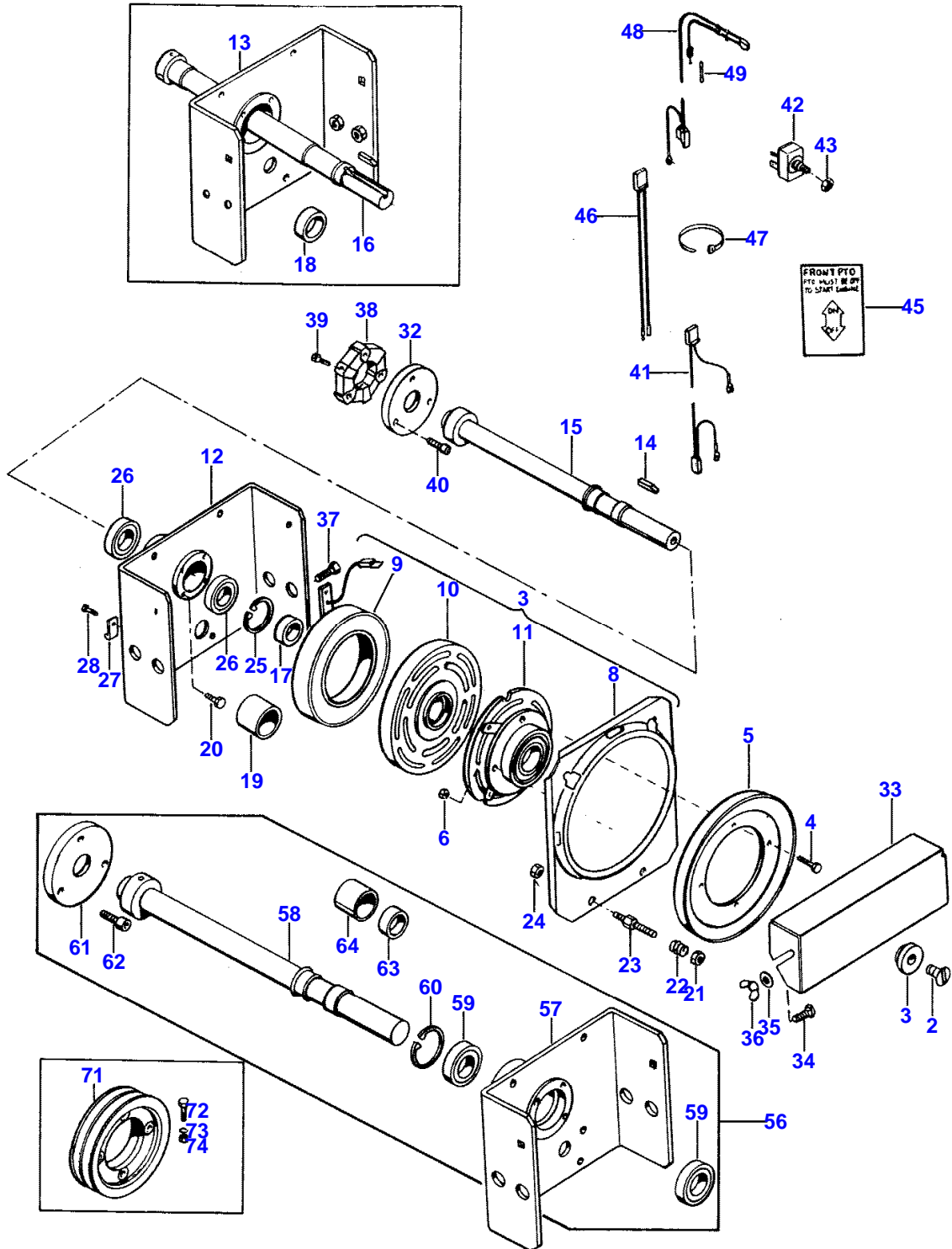


134

ELECTRIC P.T.O. CLUTCH

2963 368



89-12

651 579 M92 (ISSUE 1) 8/89

MASSEY FERGUSON

MF 1030 L COMPACT TRACTOR - 651579EA

651579EA

ELECTRIC P.T.O. CLUTCH

134

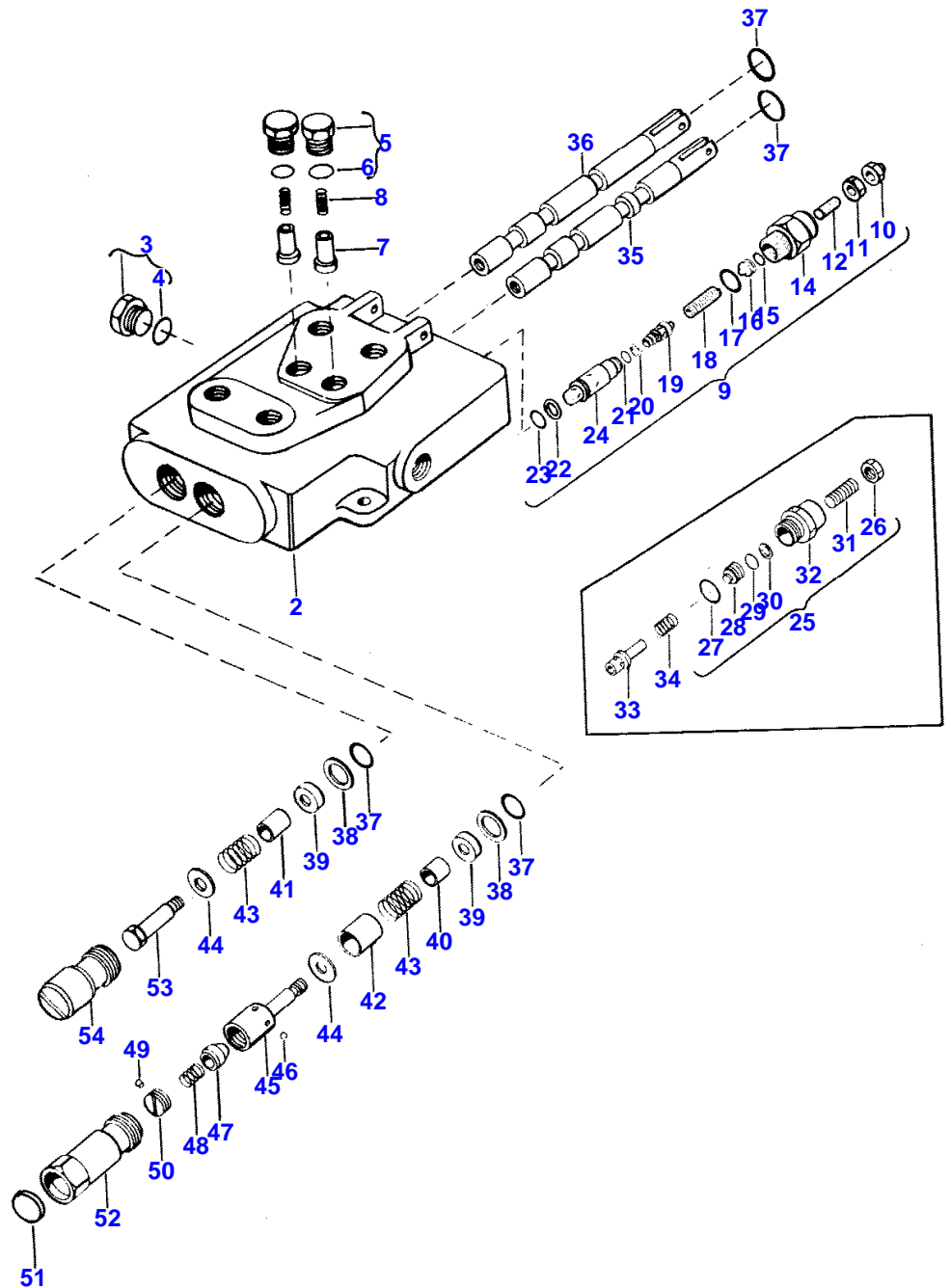
Item	Part Number	Qty	Description	Comments
	2878918	1	Kit, Clutch	(A,D) ORDER ON WHOLE GOODS
	2878913	1	Clutch	(B,E) ORDER ON WHOLE GOODS
2	358369X1	1	Bolt	(D,E)
3	772845M1	1	Washer	(D,E)
4	353666X1	4	Screw Unc	(D,E)
5	772232M1	1	Pulley	(D,E)
6	355564X1	4	Nut Unc	(D,E)
7	772056M92	1	Clutch	(D,E)
8	1055401M1	1	Plate	(D,E)
9	1067597M91	1	Coil	(D,E)
10	1067598M2	1	Rotor	(D,E)
11	1067599M91	1	Armature	(D,E)
12	1073714M91	1	Support	(D)
13	773075M91	1	Support	(C,E)
14	537073M1	1	Key	(D,E) 1/4"
15	1073711M91	1	Shaft	(D)
16	773305M91	1	Shaft	(C,E)
17	1073713M1	1	Spacer	(A,D) 1 X 1-1/2 X 1/2"
18	772745M1	1	Spacer	(B,E) 1 X 1-1/2 X 5/8"
19	1073715M1	1	Spacer	(A,D) 1-3/16 X 1-1/2 X 1-13/32"
20	350029X1	4	Screw Unf	(D,E)
21	357558X1	4	Nut	(D,E)
22	699017M1	4	Spring	(D,E)
23	773064M1	4	Screw	(D,E)
24	355566X1	4	Nut Unc	(D,E)
25	355982X1	1	Retainer	(D,E) 2.385/2.455" OD
26	831905M1	2	Bearing Assy	(D) 1-3/16 X 2-5/32 X 33/64"
26	831905M1	1	Bearing Assy	(E) 1-3/16 X 2-5/32 X 33/64"
27	326891M1	1	Strap	(D,E)
28	365011X1	1	Screw	(D,E)
32	1073717M1	1	Plate	(D)
33	773308M91	1	Guard	(D,E)
34	360501X1	2	Bolt	(D,E)
35	355618X1	2	Washer	(A,D) 5/16"
35	353755X1	2	Washer	(B,E) 11/32 X 11/16 X 5/64"
	353446X1	2	Lock Washer	(A,D) 5/16"
36	355593X1	2	Nut Unc	(D,E)
37	368838X1	4	Bolt	(D,E)
38	772567M1	1	Union	(D,E)
39	3280903M1	3	Screw	(D)
	1442571X1	6	Bolt	(E)
40	3009287X1	3	Screw Metric	(D)
41	773353M1	1	Wire	(D,E)
42	532627M91	1	Switch	(D,E)
43	368927X1	1	Nut	(D,E)
45	590715M1	1	Decal	(D,E)
46	773263M1	1	Cable	(D,E) 30"
47	515103M1	1	Clamp	(D,E)
48	773354M1	1	Wire	(D,E) 4"
49	239819M1	1	Fuse 10a Glass	(D,E)
56	837767M91	X	Kit	(E)

ELECTRIC P.T.O. CLUTCH

Item	Part Number	Qty	Description	Comments
57	1073714M91	1	Support	(E)
58	1073711M91	1	Shaft	(E)
59	831905M1	2	Bearing Assy	(E) 1-3/16 X 2-5/32 X 33/64"
60	355982X1	1	Retainer	(E) 2.385/2.455" OD
61	1073717M1	1	Plate	(E)
62	3009287X1	3	Screw Metric	(E)
63	1073713M1	1	Spacer	(E) 1 X 1-1/2 X 1/2"
64	1073715M1	1	Spacer	(E) 1-3/16 X 1-1/2 X 1-13/32"
71	2878915	1	Kit, Pulley	(D,E)
72	772167M1	1	Pulley	(D,E)
73	354603X1	4	Screw	(D,E)
73	353441X1	4	Lock Washer	(D,E)
74	355564X1	4	Nut Unc	(D,E)
				(A) USED LATE PRODUCTION (B) Repairs and replaces 837767M91/56 (C) FOR REPAIRS ORDER 837767M91 KIT, ITEM 56. REFERENC E SERVICE BULLETIN TRACTOR 86-73. (D) 2878918 (E) 2878913

TWO SPOOL VALVE

2963 367



TWO SPOOL VALVE

Item	Part Number	Qty	Description	Comments
	1057358M92	1	Control Valve	(A,E)
	1057358M91	1	Valve	(B,F)
2		1	Valve Body	(E,F) Not serviced, order 1057358M92
3	1057333M91	1	Plug	(E,F)
4	831498M1	1	Ring	(C,D,E,F) 1-3/64" ID X 7/64"
5	1057334M91	2	Plug	(E,F)
6	831452M1	1	O Ring	(C,E,F) 15/32" ID X 5/64"
7	1057335M1	2	Poppet	(E,F)
8	1057336M1	2	Spring	(E,F)
9	1074981M91	1	Valve	(E)
10	367791X1	1	Nut Unf	(E)
11	353430X1	1	Nut Unf	(E)
12		1	Screw	(E)
14		1	Body	(E) Not serviced, order 1074981M91
15	363704X1	1	Ring	(C,E) 3/8" ID X 1/16"
16		1	Piston	(E) Not serviced, order 1074981M91
17	835024M1	1	O Ring	(E) 3/4" ID X 3/32"
18	1073623M1	1	Spring	(E)
19	1073622M1	1	Poppet	(E)
20	365859X1	1	Seal	(C,E)
21	762191M1	1	Gasket	(C,E)
22	365860X1	1	Washer	(C,E) 5/16" ID X 1/16"
23	831528M1	1	O Ring	(C,E) 37/64" ID X 1/32"
24		1	Body	(E) 9/16" ID X 1/16"
25	1057337M91	1	Housing	(F) Not serviced, order 1074981M91
26	353430X1	1	Nut Unf	(F)
27	831497M1	1	O Ring	(F) 41/64" ID X 5/64"
28		1	Piston	(F) Not serviced, order 1057337M91
29	364704X1	1	Teepiece	(F)
30	366698X1	1	Ring	(F) 25/64 X 7/16 X 3/64"
31		1	Screw	(F) Not serviced, order 1057337M91
32		1	Housing	(F) Not serviced, order 1057337M91
33	1057338M1	1	Poppet	(F)
34	1057339M1	1	Spring	(F)
35		2	Spool	(E) ORDER CPT. VALVE
35		1	Spool	(F) ORDER CPT. VALVE
36		1	Spool	(F) ORDER CPT. VALVE
37	851258M1	4	O Ring	(E,F) 5/8" ID X 3/32"
38	1057342M1	2	Retainer	(E,F) 5/8 X 1-1/32 X 1/16"
39	1057343M1	2	Collar	(E,F)
40	1057344M1	1	Sleeve	(E,F) 1/2 X 9/16 X 19/32"
41	1057345M1	1	Sleeve	(E,F) 1/2 X 9/16 X 49/64"
42	1057346M1	1	Sleeve	(E,F) 25/32 X 27/32 X 1-1/64"
43	1057347M1	2	Spring	(E,F)

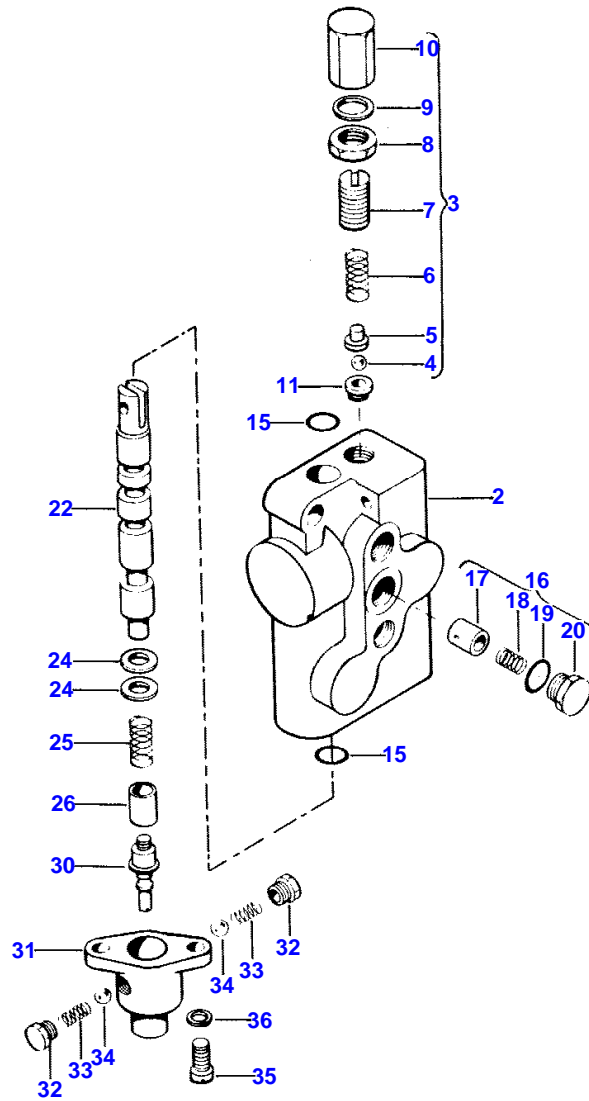
TWO SPOOL VALVE

Item	Part Number	Qty	Description	Comments
44	1057348M1	2	Washer	(E,F) 21/64 X 53/64 X 1/16"
45	1057349M1	1	Retainer	(E,F)
46	360233X1	4	Ball	(E,F) Diameter 5/32"
47	1057350M1	1	Ramp	(E,F)
48	1057351M1	2	Spring	(E)
48	1057351M1	1	Spring	(F)
49	1043741M1	1	Plug	(E) 3/16 X 1/8"
49	1057352M1	1	Insert	(F) 3/16 X 1/8"
50	1057353M1	1	Screw	(E,F) 11/16 - 16 X 5/16"
51	1068436M1	1	Plug	(E) Diameter 1-13/64"
51	1057354M1	1	Plug	(F) Diameter 29/32"
52	1057355M1	1	Cap	(E,F)
53	1057356M1	1	Bolt	(E,F)
54	1057357M1	1	Cap	(E,F) 1-1/8" NC
	837792M91	X	Kit, Seal	(E) INCLUDES ALL ITEMS MARKED "C"
	837513M91	X	Kit, Seal	(F) INCLUDES ALL ITEMS MARKED "D" (A) USED LATE PRODUCTION (B) Not serviced, order 1057358M92 (E) 1057358M92 (F) 1057358M91

130

SINGLE SPOOL VALVE

2963 366



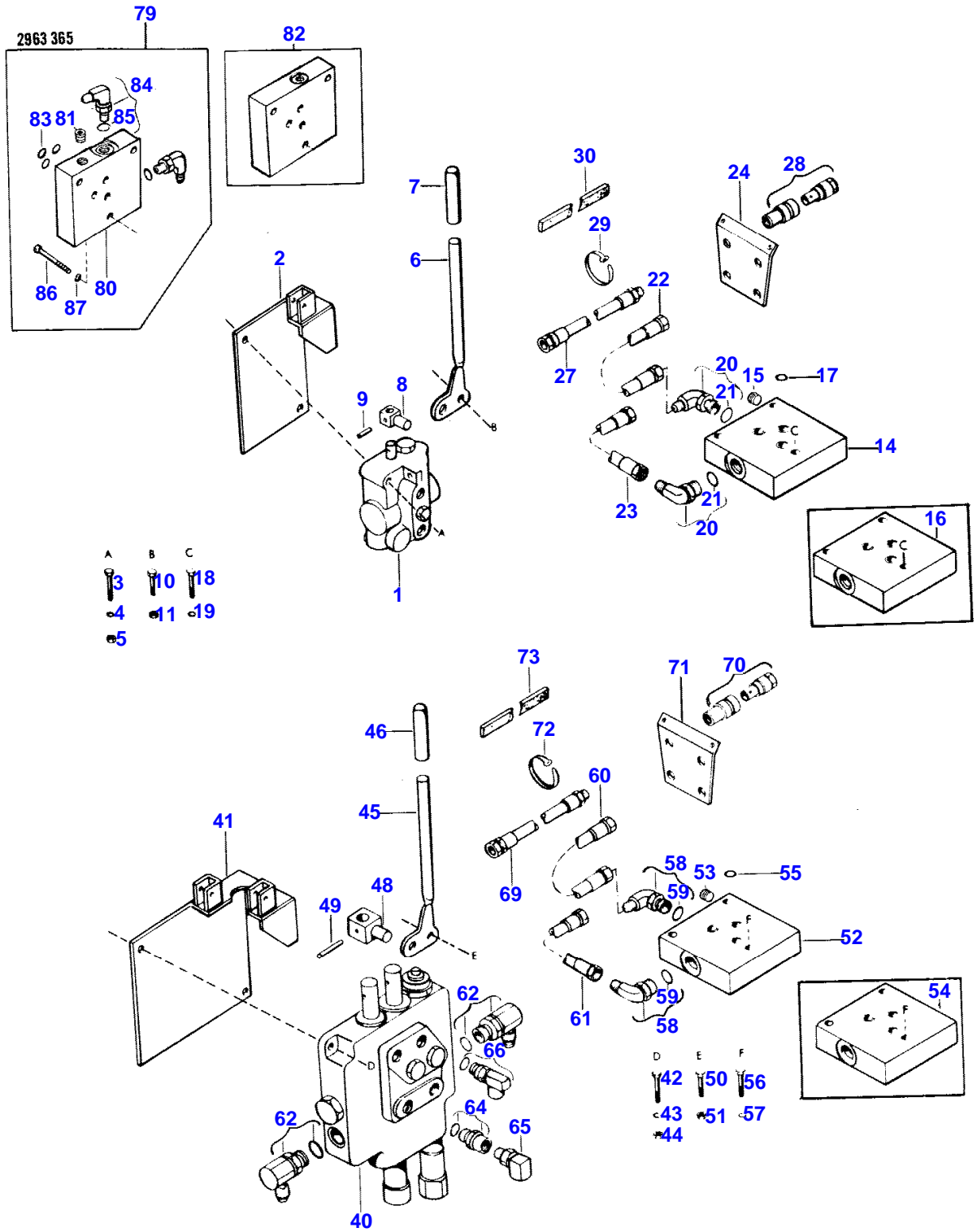
89-12

651 579 M92 (ISSUE 1) 8/89

SINGLE SPOOL VALVE

Item	Part Number	Qty	Description	Comments
	1062693M91	1	Valve	
2		1	Body	Not serviced, order 1062693M91
3	1065998M91	1	Relief Valve	
4	354466X1	1	Ball	Diameter 5/16"
5		1	Ball	Not serviced, order 1065998M91
6		1	Spring	Not serviced, order 1065998M91
7		1	Screw	Not serviced, order 1065998M91
8		1	Nut	Not serviced, order 1065998M91
9		2	Gasket	.578 X .766 X .03" Not serviced, order 1065998M91
10	1066001M1	2	Gasket	.578 X .766 X .03"
	1066001M1	1	Gasket	.578 X .766 X .03"
11		1	Valve Seat	Not serviced, order 1062693M91
15	851258M1	2	O Ring	5/8" ID X 3/32"
16	1065996M91	1	Valve	
17		1	Poppet	Not serviced, order 1065996M91
18		1	Spring	Not serviced, order 1065996M91
19	831452M1	1	O Ring	15/32" ID X 5/64"
20		1	Plug	Not serviced, order 1065996M91
22		1	Spool	Not serviced, order 1062693M91
	1065993M91	1	Float	
24		2	Washer	Not serviced, order 1065993M91
25		1	Spring	Not serviced, order 1065993M91
26		1	Spacer	Not serviced, order 1065993M91
30		1	Spool	Not serviced, order 1065993M91
31		1	Cap	Not serviced, order 1065993M91
32		2	Plug	Not serviced, order 1065993M91
33		2	Spring	Not serviced, order 1065993M91
34	361023X1	2	Ball	Diameter 3/16"
35	187137M1	2	Screw	
36	353445X1	2	Lock Washer	M10

AUXILIARY HYDRAULICS



Item	Part Number	Qty	Description	Comments
				USED EARLY PRODUCTION TRACTORS.
	2749910	1	Pressure Valve	
1	1062693M91	1	Valve	See Page - Reference Number 130
2	1062694M91	1	Plate	
3	354603X1	2	Screw	
4	353441X1	2	Lock Washer	1/4"
5	355564X1	2	Nut Unc	
6	1062695M1	1	Handle	
7	1057725M1	1	Cap	
8	1062696M1	1	Pin	
9	022668X	1	Pin	1/4 X 3/4"
10	353669X1	1	Screw Unc	
11	367480X1	1	Nut Unc	
14	1073536M91	1	Block	(A)
15	365333X1	1	Plug	1/4"
16	1057332M1	1	Distributor Body	(B)
17	1007240M1	3	O Ring	3/8" X 3/32"
18	390246X1	3	Bolt	
19	353446X1	3	Lock Washer	5/16"
20	357197X91	2	Elbow	9/16", 90{0}
21	831452M1	1	O Ring	15/32" X 5/64"
22	1062697M91	1	Hose	3/8 X 29"
23	1062698M91	1	Hose	3/8 X 37"
24	1062699M1	1	Plate	
27	1062700M91	2	Hose	3/8 X 24"
28	1052990M91	2	Coupler	3/8"
29	1043560M1	2	Strap	3/8 X 14"
30	1062701M1	1	Trim	18"
	2749911	1	Pressure Valve	
40	1057358M91	1	Valve	See Page - Reference Number 133
41	1062702M91	1	Plate	
42	354603X1	2	Screw	
43	353441X1	2	Lock Washer	1/4"
44	355564X1	2	Nut Unc	
45	1062695M1	2	Handle	
46	1057725M1	2	Cap	
48	1062703M1	2	Pin	
49	357629X1	2	Pin	3/16 X 3/4"
50	353669X1	2	Screw Unc	
51	367480X1	2	Nut Unc	
52	1073536M91	1	Block	(A)
53	365333X1	1	Plug	1/4"
54	1057332M1	1	Distributor Body	(B)
55	1007240M1	3	O Ring	3/8" X 3/32"
56	390246X1	3	Bolt	
57	353446X1	3	Lock Washer	5/16"
58	357197X91	2	Elbow	9/16", 90{0}
59	831452M1	1	O Ring	15/32" X 5/64"
60	1053010M91	1	Hydr Hose	3/8 X 29"
61	1062704M91	1	Hose	3/8 X 37"
62	1057380M91	2	Connector	7/8" - 14 X 9/16" - 18 90{0}
64	1062705M91	2	Adaptor	3/4" - 16 X 3/8"
65	1062706M91	2	Elbow	3/8", 90{0}
66	1062707M91	2	Elbow	3/4" - 16 90{0} X 3/8"
69	1062700M91	4	Hose	3/8 X 24"
70	1052990M91	4	Coupler	3/8"
71	1062699M1	1	Plate	
72	1043560M1	3	Strap	3/8 X 14"
73	1062701M1	1	Trim	18"
79	2778918	1	Block	
80	1073536M91	1	Block	(A)
81	365333X1	1	Plug	1/4"
82	1057332M1	1	Distributor Body	(B)
83	1007240M1	3	O Ring	3/8" X 3/32"
84	357197X91	2	Elbow	9/16", 90{0}
85	831452M1	1	O Ring	15/32" X 5/64"
86	390246X1	3	Bolt	
87	353446X1	3	Lock Washer	5/16"

MASSEY FERGUSON

MF 1030 L COMPACT TRACTOR - 651579EA

651579EA

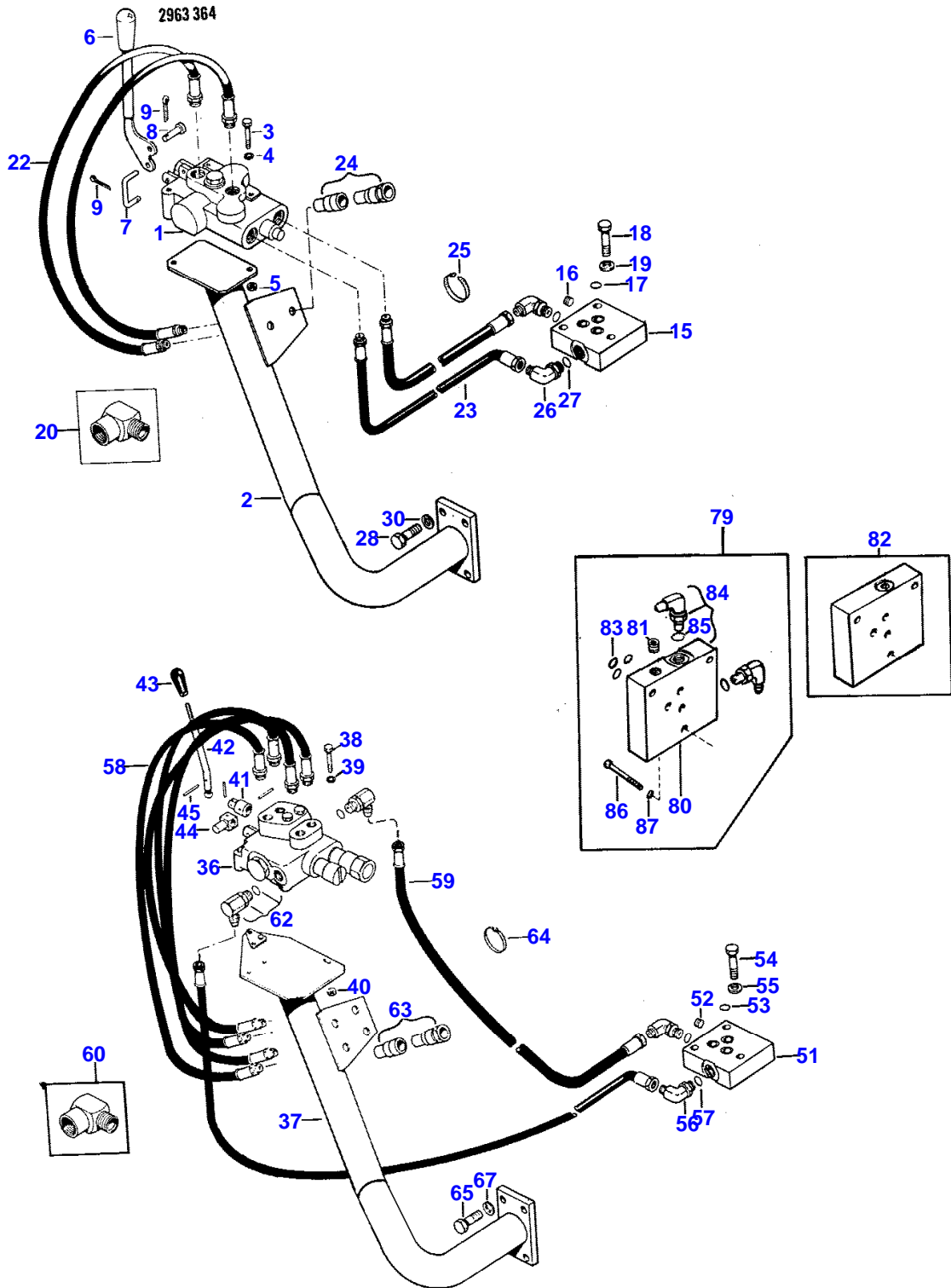
AUXILIARY HYDRAULICS - USED EARLY PRODUCTION TRACTORS.

129

Item	Part Number	Qty	Description	Comments
				(A)
				USED LATE PRODUCTION
				(B)
				Repairs and replaces 1073536M91

126

AUXILIARY HYDRAULICS



89-12

651 579 M92 (ISSUE 1) 8/89

MASSEY FERGUSON

MF 1030 L COMPACT TRACTOR - 651579EA

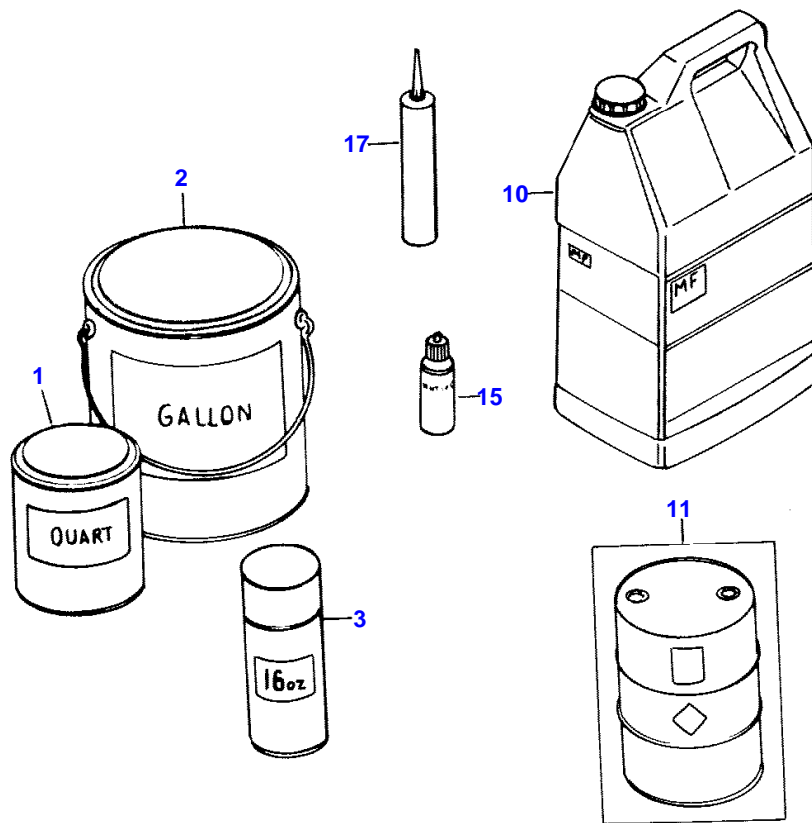
651579EA

AUXILIARY HYDRAULICS - USED LATE PRODUCTION

126

Item	Part Number	Qty	Description	Comments
				USED LATE PRODUCTION
	2749912	1	Kit, Valve	
1	1062693M91	1	Valve	See Page - Reference Number 130
2	1075081M91	1	Pedestal	
3	354603X1	2	Screw	
4	353441X1	2	Lock Washer	1/4"
5	355564X1	2	Nut Unc	
6	1075082M91	1	Handle	
7	1075083M1	1	Bolt	
8	1075084M1	1	Pin	1/4 X 3/4"
9	354050X1	2	Pin	3/32 X 1"
15	1073536M91	1	Block	
16	365333X1	1	Plug	1/4" P.T.
17	1007240M1	3	O Ring	3/8" ID X 3/32"
18	390246X1	3	Bolt	
19	339374X1	3	Lock Washer	M8
20	1062706M91	2	Elbow	3/8" NPT, 90{0}
22	1075085M91	2	Hose	3/8 X 24"
23	1075086M91	2	Hose	3/8 X 80"
24	1052990M91	2	Coupler	3/8"
25	1043560M1	2	Strap	3/8 X 14"
26	357197X91	2	Elbow	9/16" NF, 90{0}
27	831452M1	1	O Ring	15/32" ID X 5/64"
28	339224X1	4	Bolt Metric	
	339294X1	4	Bolt Metric	
30	339369X1	4	Lock Washer	M12
	2749913	1	Kit, Valve	
36	1057358M91	1	Valve	See Page - Reference Number 133
37	1075087M91	1	Pedestal	
38	354603X1	2	Screw	
39	353441X1	2	Lock Washer	1/4"
40	355564X1	2	Nut Unc	
41	1057381M1	1	Pivot	
42	1070261M1	1	Lever	
43	1057384M1	1	Knob	
44	1062703M1	1	Pin	
45	764485M1	1	Pin	3/16 X 1"
51	1073536M91	1	Block	
52	365333X1	1	Plug	1/4" P.T.
53	1007240M1	3	O Ring	3/8" ID X 3/32"
54	390246X1	3	Bolt	
55	339374X1	3	Lock Washer	M8
56	357197X91	2	Elbow	9/16" NF, 90{0}
57	831452M1	1	O Ring	15/32" ID X 5/64"
58	1075088M91	4	Hose	3/8 X 24"
59	1075089M91	2	Hose	3/8 X 80"
60	1062706M91	4	Elbow	3/8" NPT, 90{0}
62	1057380M91	2	Connector	7/8" - 14 X 9/16" - 18 90{0}
63	1052990M91	4	Coupler	3/8"
64	1043560M1	3	Strap	3/8 X 14"
65	339224X1	4	Bolt Metric	
	339294X1	4	Bolt Metric	
67	339369X1	4	Lock Washer	M12
79	2778918	1	Block	
80	1073536M91	1	Block	(A)
81	365333X1	1	Plug	1/4" P.T.
82	1057332M1	1	Distributor Body	(B)
83	1007240M1	3	O Ring	3/8" ID X 3/32"
84	357197X91	2	Elbow	9/16" NF, 90{0}
85	831452M1	1	O Ring	15/32" ID X 5/64"
86	390246X1	3	Bolt	
87	353446X1	3	Lock Washer	5/16" (A)
				USED LATE PRODUCTION (B) Repairs and replaces 1073536M91

2963 361



1ST PRINT

651 579 M92 (Issue 1) 10/88

Buy Now



Our support email:

ebooklibonline@outlook.com