

Page Title	Page Number
PUBLICATION INFORMATION	0
ELEVATOR - ELEVATOR, FEEDER	24
ELEVATOR - ELEVATOR TOP SHAFT AND DRIVE	28
ELEVATOR - ELEVATOR TO TABLE DRIVE	30
ELEVATOR - ELEVATOR SHIELDS	34
HEADER - HEADER REVERSER	36
HEADER - HEADER REVERSER MOTOR AND CLUTCH, PRIOR S/N N12718	38
HEADER - HEADER REVERSER MOTOR, SUB ASSEMBLY, PRIOR S/N	40
HEADER - HEADER REVERSER MOTOR AND CLUTCH, EFF. S/N N12718	42
HEADER - HEADER ADAPTER, 1100 SERIES CORN HEADER	44
BEATER - FRONT BEATER	46
BEATER - MAIN COUNTERSHAFT AND FRONT BEATER, DRIVES W/SHOCK	48
BEATER - MAIN COUNTERSHAFT AND FRONT BEATER, DRIVES W/OUT	52
CONCAVE - INLET HOUSING AND STONE TRAP	56
CONCAVE - CONCAVE CONTROLS	60
CONCAVE - ROTOR	64
CONCAVE - ROTOR GEAR BOX	68
CONCAVE - HYDROSTATIC MOTOR, ROTOR	70
SEPARATOR - SEPARATOR GRATES	74
SEPARATOR - GRAIN PAN	76
SEPARATOR - SHAKER SHOE AND SIEVES	78
SEPARATOR - PITMAN DRIVE	84
HOUSING AND FANNING MILL - LOWER AUGER HOUSING AND FANNING	86
HOUSING AND FANNING MILL - VARIABLE SPEED FAN DRIVE	90
ELEVATOR - GRAIN ELEVATOR, LOWER	92
ELEVATOR - GRAIN ELEVATOR, UPPER	94
ELEVATOR - RETURN ELEVATOR, LOWER	96
ELEVATOR - RETURN ELEVATOR, UPPER	98
UNLOADING AUGER - UNLOADING AUGER, LOWER	100
UNLOADING AUGER - UNLOADING AUGER, CENTER	102
UNLOADING AUGER - UNLOADING AUGER, STANDARD AND EXTENDED,	104
UNLOADING AUGER - UNLOADER CONTROLS	106
GRAIN TANK	108
REAR ROTOR HOUSING	112
LADDER, PLATFORM & FUEL SYSTEM - LADDER, PLATFORM, FUEL TANK	114
LADDER, PLATFORM & FUEL SYSTEM - LADDER, PLATFORM, FUEL TANK,	116
LADDER, PLATFORM & FUEL SYSTEM - LADDER, PLATFORM, FUEL TANK,	120
REAR DECK - REAR DECK AND LADDER	122
SHIELDS - SIDE SHIELDS AND LADDER	124
SHIELDS - MUDSHIELDS	126
ELECTRICAL - ELECTRICAL HARNESS, FRONT	130
ELECTRICAL - ELECTRICAL HARNESS, REAR	134
ELECTRICAL - ENGINE AND BATTERY WIRING	136
ELECTRICAL - CONTROL CONSOLE	138
ELECTRICAL - CAB ROOF WIRING	142
ELECTRICAL - MONITORS	144
ELECTRICAL - LIGHTS	146
ELECTRICAL - WIRING HARNESS, MOUNTING BRACKETS AND CLIPS	150
ELECTRICAL - STARTER	152
ELECTRICAL - ALTERNATOR - 90AMP, PRIOR S/N T11203	154
ELECTRICAL - ALTERNATOR - 130AMP, EFF. S/N T11203 AND UP	156
STRAW CHOPPER AND SPREADER - JACK SHAFT DRIVE	158
STRAW CHOPPER AND SPREADER - STRAW CHOPPER DRIVE	160
STRAW CHOPPER AND SPREADER - STRAW CHOPPER	162
STRAW CHOPPER AND SPREADER - STRAW CHOPPER, HOOD ASSEMBLY	166
STRAW CHOPPER AND SPREADER - STRAW SPREADER DRIVE	168
STRAW CHOPPER AND SPREADER - STRAW SPREADER	170
ENGINE - MAIN ENGINE DRIVE, PRIOR S/N N12701	172
ENGINE - MAIN ENGINE DRIVES, 220HP @ 2500RPM, EFF. S/N N12701	176
ENGINE - MAIN ENGINE DRIVES, 240HP @ 2200RPM, EFF. S/N N12701	180
ENGINE	238
ENGINE - AIR INTAKE AND EXHAUST	242
ENGINE - RADIATOR, OIL COOLER AND A/C CONDENSER, R12	244
ENGINE - RADIATOR, OIL COOLER AND A/C CONDENSER, 134A	246
TRANSMISSION - HYDROSTATIC PUMP, PROPEL	184
TRANSMISSION - HYDROSTATIC MOTOR, PROPEL	188
TRANSMISSION - HYDROSTATIC PUMP, ROTOR	190
TRANSMISSION	194

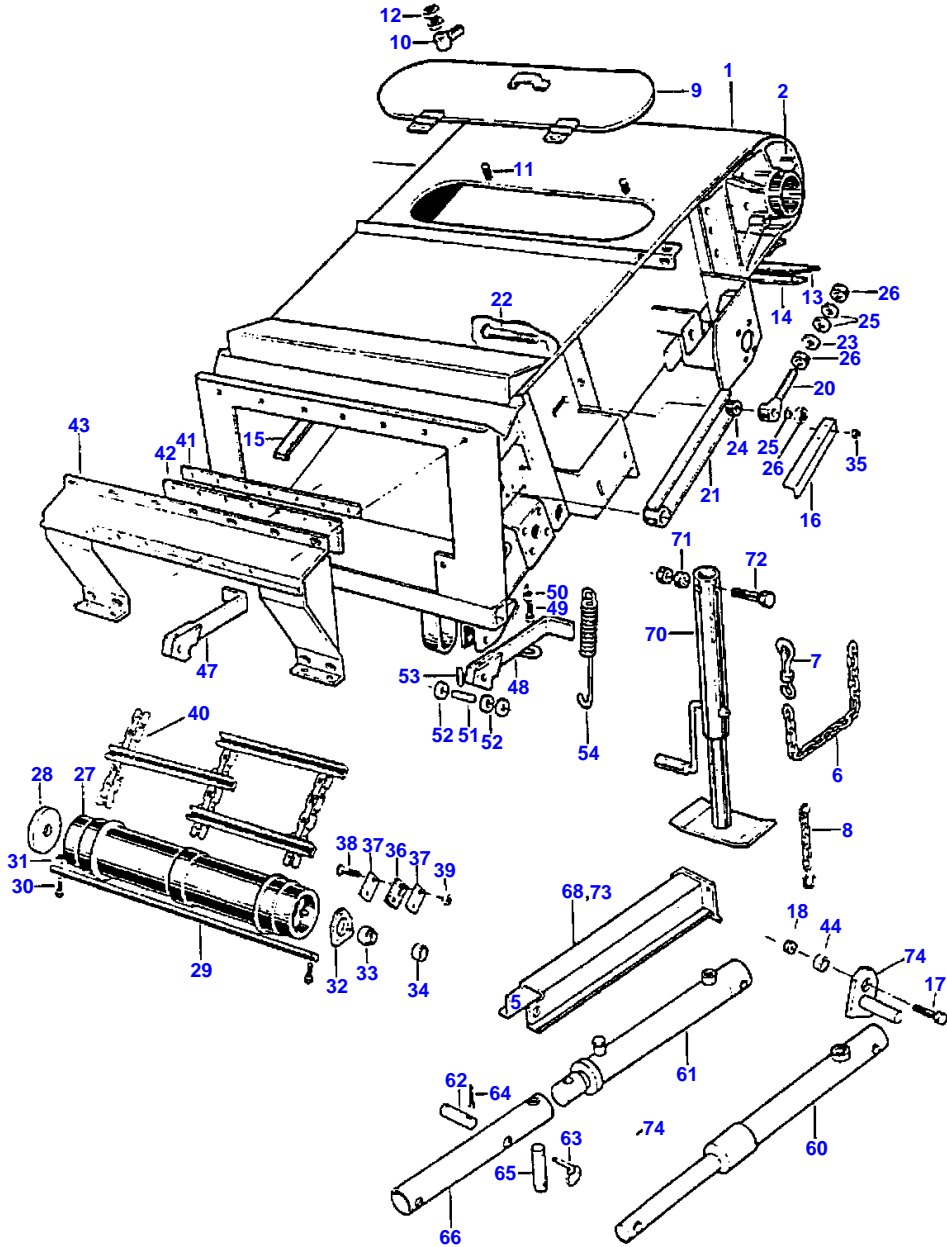
BRAKES - DISC BRAKES AND CYLINDERS	200
BRAKES	202
MAIN FRAME - MAIN FRAME AND AXLE SUPPORT	206
MAIN FRAME - REAR AXLE, STANDARD	208
MAIN FRAME - REAR AXLE, REAR WHEEL ASSIST, MUD HOG SYSTEM II,	212
MAIN FRAME - REAR AXLE, REAR WHEEL ASSIST, MUD HOG SYSTEM	216
REAR AXLE - REAR WHEEL ASSIST, MUD HOG SYSTEM II, PRIOR S/N	220
REAR AXLE - REAR WHEEL ASSIST, MUD HOG SYSTEM III, EFF. S/N	222
REAR AXLE - HYDROSTATIC MOTOR, REAR WHEEL ASSIST, MUD HOG	224
REAR AXLE - HYDROSTATIC MOTOR, REAR WHEEL ASSIST, MUD HOG	226
REAR AXLE - SELECTOR VALVE, LIMITER AND FLOW DIVIDER, REAR	228
FINAL DRIVE	230
WHEELS - WHEELS, FRONT & REAR	236
ENGINE COMPARTMENTS - ROTARY SCREEN AND DRIVE	248
ENGINE COMPARTMENTS - ENGINE COVERS	252
GREASE HARNESS	254
DRIVES - BELTS, LEFT	256
DRIVES - BELTS, RIGHT	258
DRIVES - CHAINS	260
DRIVES - CONVEYOR	262
CAB - CAB ASSEMBLY	264
CAB	266
CAB - HEATER AND AIR CONDITIONING, R12	268
CAB - HEATER AND AIR CONDITIONING, 134A	272
CAB - AIR CONDITIONING COMPRESSOR, R12	276
CAB - AIR CONDITIONING COMPRESSOR, R134A	278
CAB - SEAT ASSEMBLY	280
CAB - WINDSHIELD WIPER	282
CAB - CONTROL BOX	284
CAB - THROTTLE CONTROL	290
CAB - GEAR SHIFT CONTROLS	292
CAB - HYDROSTATIC CONTROLS	294
CAB - PRESSURE RELEASE CONTROLS	296
STEERING - STEERING COLUMN	286
STEERING - STEERING CONTROL VALVE	288
HYDRAULICS - STEERING HYDRAULICS	298
HYDRAULICS - STEERING CYLINDERS, PRIOR S/N N12789	300
HYDRAULICS - STEERING CYLINDERS, EFF. S/N N12789 & UP, CROSS	302
HYDRAULICS - HEADER LIFT, REEL LIFT AND REEL DRIVE,	304
HYDRAULICS - HEADER LIFT CYLINDERS - PISTON TYPE	308
HYDRAULICS - HEADER LIFT CYLINDERS - ROD TYPE, EFF. S/N	310
HYDRAULICS - UNLOADER HYDRAULICS	312
HYDRAULICS - OIL COOLER, RESERVOIR AND LINES	314
HYDRAULICS - ROTOR PUMP, MOTOR AND LINES	318
HYDRAULICS - PROPEL PUMP, MOTOR AND LINES	320
HYDRAULICS - HEADER LIFT VALVE	322
HYDRAULICS - REEL DRIVE VALVE	324
HYDRAULICS - REEL LIFT VALVE	326
HYDRAULICS - HEADER REVERSER VALVE	328
HYDRAULICS - UNLOADER SWING VALVE, LARGE BODY	330
HYDRAULICS - UNLOADER SWING VALVE, LARGE BODY	332
HYDRAULICS - UNLOADER SWING VALVE, SMALL BODY	334
HYDRAULICS - HYDRAULIC PUMP LINES	336
HYDRAULICS - HYDRAULIC PUMP, 220HP @ 2500RPM	338
HYDRAULICS - HYDRAULIC PUMP, 240HP @ 2200RPM	340
HYDRAULICS - REEL FORE/AFT VALVE	342
PAINT AND OIL	344
LABELS AND DECALS - LABELS AND DECALS, MASSEY	346
RECOMMENDED DEALER STOCK	348

B-1

24

MF 8570 COMBINE
ELEVATOR

ELEVATOR, FEEDER



MC00121

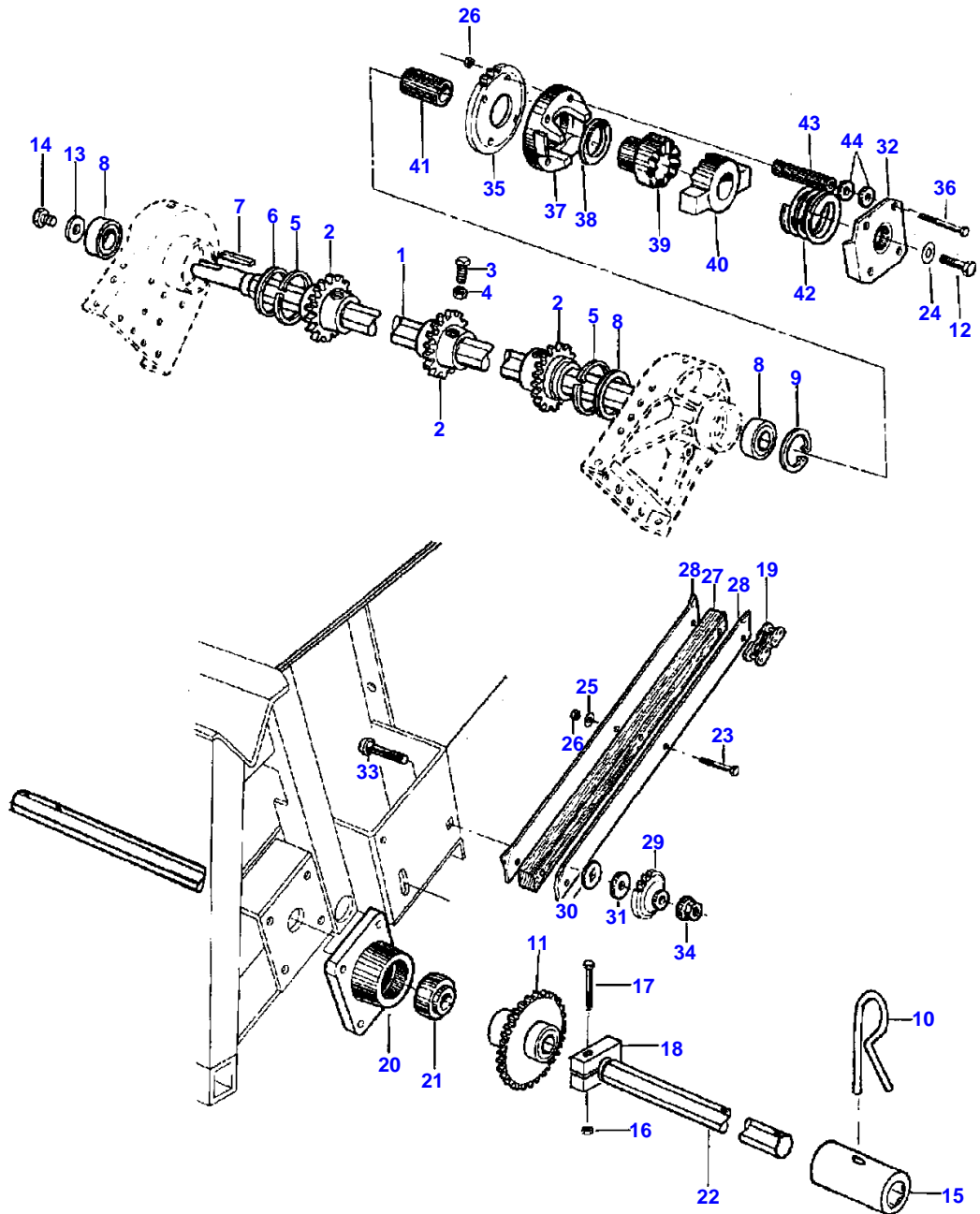
Item	Part Number	Qty	Description
1	2622741W93	1	HOUSING, ASSEMBLY, FEED
2	2570220W1	1	SUPPORT, TOP FEEDER SHAFT, LEFT
	2570230W1	1	SUPPORT, TOP FEEDER SHAFT, RIGHT
6	1609200W1	1	CHAIN (18 LINKS)
7	1611180W1	1	HOOK, CHAIN SNAP
8		1	CHAIN ASSEMBLY (OBTAIN LOCALLY)
9	1579361W91	1	DOOR ASSEMBLY, FEEDER
10	2324290W1	2	RETAINER
11	364946X1	2	BOLT, CARRIAGE 1/4-20 UNC X 1 1/4
12	375107X1	4	NUT, HEX JAM 1/4-20 UNC
13	2506040W1	1	SEAL, FEEDER
14	2506050W1	1	STRIP, BOLTING
15	2623090W1	3	WEAR STRIP
16	2623950W1	2	ANGLE, SUPPORT
17	354276X1	4	BOLT, HEX 1/2-13 UNC X 1 1/4 (QTY. 6 W/THIRD CYL. ACCES. KIT) (EFF. S/N P13201 & UP)
18	368644X1	4	NUT, HEX FLANGE LOCK 1/2-13 UNC (QTY. 6 W/THIRD CYL. ACCES. KIT) (EFF. S/N P13201 & UP)
20	103001M91	2	EYEBOLT
21	2541981W91	2	ARM ASSEMBLY, PIVOT
22	364424X1	2	BOLT, CARRIAGE 3/4-10 UNC X 3 1/2
23	353775X1	2	WASHER, HEAVY HARDENED FLAT 3/4
24	2541950W1	2	BUSHING 25/32 X 1 1/2 X 51/64
25	195597M1	6	WASHER, SPECIAL HEAVY LOCK 3/4
26	375100X1	6	NUT, HEX 3/4-10 UNC
27	2570091W93	1	DRUM ASSEMBLY, FEEDER
28	101213M1	2	SEAL
29	2506540W1	1	SHAFT, FEEDER
30	354613X1	2	BOLT, HEX 5/16-18 UNC X 2 1/4
31	104346W1	2	NUT, HEX FLANGE LOCK SAE 8 5/16-18 UNC
32	101161M1	2	HOUSING, BEARING
33	50021	2	BEARING, BALL, W/COLLAR
34	50021	2	COLLAR, BEARING
35	355566X1	4	NUT, HEX 3/8-16 UNC
36	1587160W1	4	STOP, BOTTOM FEEDER SHAFT
37	1587180W2	8	PLATE, BOLTING
38	364535X1	8	BOLT, CARRIAGE 1/2-13 UNC X 2 1/4
39	369066X1	8	NUT, HEX LOCK 1/2-13 UNC
40	2623913W92	1	CHAIN AND SLAT (PLAIN) ASSEMBLY (SEE DRIVES - CONVEYOR)
	111936W91	1	CHAIN AND SLAT (SERRATED) ASSEMBLY (SEE DRIVES - CONVEYOR)
41	2569610W1	1	STRIP, CLAMPING
	369064X1	6	NUT, HEX LOCK 3/8-16 UNC
42	2569600W1	1	FLAP, FEEDER
43	2564241W91	1	COVER ASSEMBLY, FEEDER
44	274755M1	4	SPACER (QTY. 6 W/THIRD CYL. ACCES. KIT) (EFF. S/N P13201 & UP)
47	101148M92	1	LATCH ASSEMBLY, RH
48	101149M92	1	LATCH ASSEMBLY, LH
49	354262X1	2	BOLT, HEX 3/8-16 UNC X 1 1/2
50	375109X1	2	NUT, HEX JAM 3/8-16 UNC
51	1718230W2	2	PIN, PIVOT
52	355621X1	6	WASHER, WIDE FLAT 1/2
53	764485M1	2	PIN, ROLL 3/16 X 1
54	1681180W1	2	SPRING, LATCH 7 51/64 FREE LENGTH
60	104397W91	2	CYLINDER ASSEMBLY, HEADER LIFT (SEE HEADER LIFT CYLINDER LISTING) (QTY. 3 W/THIRD CYL. ACCES. KIT) (EFF. S/N P13101 & UP)
61	104397W91	2	CYLINDER ASSEMBLY, HEADER LIFT (KEY NUMBER)(PRIOR S/N P13101) (QTY. 3 W/THIRD CYL. ACCES. KIT) (SEE HEADER LIFT CYLINDER LISTING)
62	1596510W1	5	PIN, DRILLED 1 1/4 X 4 7/8 (QTY. 7 W/THIRD CYL. ACCES. KIT) (PRIOR S/N P13201)
63	W246271B	7	PIN, LYNCH (PRIOR S/N P13101) (QTY. 10 W/THIRD CYL. ACCES. KIT)
64	354092X1	7	PIN, COTTER 1/4 X 1 3/4 (QTY. 10 W/THIRD CYL. ACCES. KIT) (PRIOR S/N P13201)
65	2624620W1	2	PIN, JACK EXTENSION PRIOR S/N P13101 (QTY. 3 W/THIRD CYL. ACCES. KIT)
66	2623280W1	2	EXTENSION, CYLINDER FEEDER (QTY. 3 W/THIRD CYL. ACCES. KIT) (PRIOR S/N P13101)
68	2624531W91	1	LOCK ASSEMBLY (QTY. 3 W/THIRD CYL. ACCES. KIT)
70	2628971W91	1	JACK ASSEMBLY (ACCESSORY)
71	354734X1	1	BOLT, HEX 3/4-10 UNC X 5 (ACCESSORY)
72	375100X1	2	NUT, HEX 3/4-10 UNC (ACCESSORY)
73	104463W91	1	LIFT LOCK ASM. (EFF. S/N P13101 & UP) (ORDER WHEN REPL. ITEM 61 CYL. W/ITEM 60 ON LH SIDE)
74	104335W91	4	PIN ASSEMBLY (EFF. S/N P13201 & UP) (QTY. 6 W/THIRD CYL. ACCES. KIT)

B-5

28

MF 8570 COMBINE
ELEVATOR

ELEVATOR TOP SHAFT AND DRIVE



MC00002

Item	Part Number	Qty	Description
1	101781M1	1	SHAFT, TOP FEEDER
2	2570170W2	3	SPROCKET, TOP FEEDER SHAFT (12 TEETH)
3	353911X1	6	SCREW, SQUARE HEAD SET 1/2-13 UNC X 1
4	375111X1	6	NUT, HEX JAM 1/2-13 UNC
5	356003X1	2	SNAP RING
6	2570200W1	2	RING, SEAL
7	10738X	1	KEY 3/8 X 3/8 X 1-1/2
8	71154722	2	BEARING 1-31/32 X 4-11/32 X 1-1/16
9	355997X1	1	RING, SNAP, BEARING RETAINING
10	1579550W1	1	PIN, CLINCH
11	101975M91	1	SPROCKET ASSEMBLY (28 TEETH)
12	367451X1	1	BOLT, HEX LOCK 3/4 X 1-1/2
13	2403610W1	1	WASHER 29/32 X 2 1/2 X 3/8
14	907205W1	1	BOLT, HEX SAE 8, 7/8-9 UNC X 1 1/2
15	1579540W1	1	COUPLING, C SHAFT
16	364217X1	1	NUT, HEX FLANGE LOCK 3/8-16 UNC
17	70921972	1	BOLT, HEX 3/8-16 UNC X 2 1/2
18	104330W1	1	COLLAR, CLAMPING
19	103835W91	1	CHAIN ASSEMBLY (SEE CHAINS LISTING)
20	2466370W1	1	HOUSING, BEARING
21	1577800W1	1	BEARING
22	104363W1	1	SHAFT, LOWER COUNTERSHAFT
23	353691X1		BOLT, HEX 3/8-16 UNC X 1
24	363947X1	1	WASHER, SPECIAL FLAT
25	355619X1		WASHER, WIDE FLAT 3/8
26	364217X1		NUT, HEX FLANGE LOCK 3/8-16 UNC
27	101141M1	1	GUIDE, FEEDER CHAIN, UPPER
28	101140M1	2	GUIDE, GUIDE SIDES
29	510061W1	1	SPROCKET, CHAIN (15 TEETH)
30	368933X1	2	SPACER, IDLER (SQUARE HOLE)
31	355623X1	1	WASHER, WIDE FLAT 5/8
33	363376X1	1	BOLT, CARRIAGE 5/8-11 UNC X 2 1/2
34	915891W1	1	NUT, HEX FLANGE LOCK 5/8-11 UNC
35	101783M1	-	SPROCKET, (35 TEETH)
36	357035X1	4	BOLT, HEX 3/8-16 UNC X 6
37	1777403W91	1	DRIVE HOUSING ASSEMBLY
38	1717640W1	1	WASHER, FLAT 2 3/8 X 3 1/2 X 9/64
39	2563800W1	1	JAW, FIXED
40	1659630W1	1	JAW, MOVABLE
41	101785M1	1	SPACER
42	1659650W1	1	SPRING, CLUTCH (4 COILS, 3 5/16 FREE LENGTH)
43	2573180W1	4	SPACER 31/64 X 5/8 X 3 21/32
44	355619X1	8	WASHER, WIDE FLAT 3/8
54	1659660W1	1	RETAINER, SPRING

MC00002

Item	Part Number	Qty	Description
1	104363W1	1	SHAFT, LOWER COUNTERSHAFT
4	1827110W1	1	SHEAVE (3 GROOVE) 11 5/8" OD (STD FEEDER DRV ONLY; 3 RIB BELT)
	104064W1	1	SHEAVE (4 GROOVE) 13 " OD (HIGH CAPACITY FEEDER DRV ONLY; 4 RIB BELT)
5	354653X1		BOLT, HEX 1/2-13 UNC X 2 3/4
6	368644X1		NUT, HEX FLANGE LOCK 1/2-13 UNC
7	1577800W1	1	BEARING
8	2466370W1	1	HOUSING, BEARING
9	370585X1	1	PIN, SPRING 1/4 X 2 1/4
10	353724X1		BOLT, HEX 1/2-13 UNC X 1 1/2
11	353767X1	1	WASHER, FLAT 1 3/8
15		1	BELT (SEE RIGHT BELTS LLISTING)
16	1786720W1	1	IDLER, FLAT (8) (STD FEEDER DRV ONLY; 3 RIB BELT)
	108063W1	1	IDLER FLAT (10)(HIGH CAPACITY FEEDER DRIVE ONLY;4 RIB BELT)
	353144X1	1	BEARING, BALL (PRIOR S/N T11203)
	22289X	1	RING, INTERNAL RET. (PRIOR S/N T11203)
17	1715660W1	1	IDLER, TRIPLE "V" (8" OD) (STD FEEDER DRV ONLY; 3 RIB BELT) (ORDER FLAT IDLER)(PRIOR S/N T11203)
	2545270W1	1	IDLER, FLAT (8"OD)(EFF. S/N T11203 & UP) (STD FEEDER DRV ONLY; 3 RIB BELT)
	108274W1	1	IDLER, FLAT (10" OD)(HIGH CAPACITY FEEDER DRV ONLY;4 RIB BELT)
18	353144X1	1	BEARING, BALL (PRIOR S/N T11203)
19	22289X	1	RING, INTERNAL RET. (PRIOR S/N T11203)
20	2527720W1	1	WASHER 21/32 X 1 5/16 X 3/8 (PRIOR S/N T11203)
21	354290X1	1	BOLT, HEX (5/8-11 UNC X 3 1/4)
22	1715670W1	1	PIN, IDLER 1 9/16 LG(PRIOR S/N T11203)
23	355623X1		WASHER, WIDE FLAT(5/8
24	354683X1	1	BOLT, HEX 5/8-11 UNC X 4 1/2
25	353760X1		WASHER, NARROW FLAT 5/8
26	2451440W1	3	SPACER 11/16 X 1 1/4 X 13/16 (STD FEEDER DRV ONLY; 3 RIB BELT)
	104080W1	1	PIN, HOLLOW, SPECIAL (HIGH CAPACITY FEEDER DRV ONLY;4 RIB BELT)
27	2624513W91	1	ARM ASSEMBLY, IDLER (STD FEEDER DRV ONLY; 3 RIB BELT)
	104079W91	1	ARM ASSEMBLY, IDLER (HIGH CAPACITY FEEDER DRV ONLY;4 RIB BELT)
28	70915276	1	GREASE FITTING 1/8 NPTF, 90 DEG
29	1689170W1	1	BUSHING 1 X 1 15/64 X 3/4
30	1742670W1	1	BUSHING 63/64 X 15/64 X 1 1/2
31	2441490W1	1	SLEEVE 41/64 X 63/64 X 3 1/16
32	915891W1	1	NUT, HEX FLANGE LOCK 5/8-11 UNC
33	354294X1	1	BOLT, HEX 5/8-11 UNC X 3 3/4 (STD FEEDER DRV ONLY; 3 RIB BELT)
	354683X1	1	BOLT, HEX 5/8-11 UNC X 4 1/2 (HIGH CAPACITY FEEDER DRV ONLY; 4 RIB BELT)
35	2627000W1	1	SPRING 45 1/2 COILS, 17 1/4 FREE LENGTH
36	2626120W1	1	EYEBOLT 1/2-13 UNC X 12 5/8 LONG (STD FEEDER DRV ONLY; 3 RIB BELT)
	104073W1	1	EYEBOLT 1/2-13 UNC X 16 1/2 LONG (HIGH CAPACITY FEEDER DRV ONLY; 4 RIB BELT)
37	1810870W1	1	WASHER, SPHERICAL (STD FEEDER DRV ONLY; 3 RIB BELT)
	104071W1	1	BUSHING 2 5/8 LG SPECIAL (HIGH CAPACITY FEEDER DRV ONLY;4 RIB BELT)
38	375111X1	2	NUT, HEX JAM 1/2-13 UNC (STD FEEDER DRV ONLY; 3 RIB BELT)
	375098X1	1	NUT, HEX 1/2-13 UNC (HIGH CAPACITY FEEDER DRV ONLY;4 RIB BELT)
39	2527720W1	2	WASHER 21/32 X 1 5/16 X 3/8 (HIGH CAPACITY FEEDER DRV ONLY;4 RIB BELT) (PRIOR S/N T11203)
40	105086W91	1	IDLER STOP CHAIN ASSEMBLY

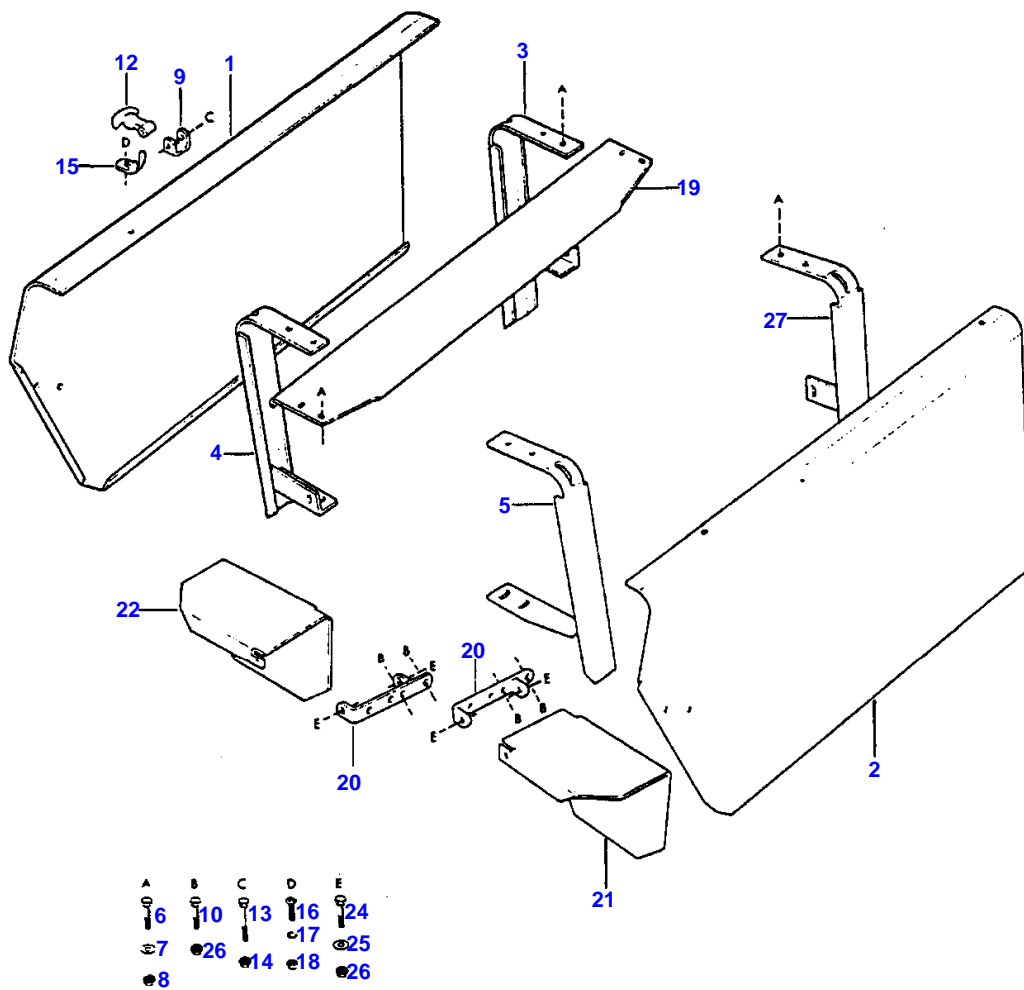
MC00123

B-11

34

MF 8570 COMBINE
ELEVATOR

ELEVATOR SHIELDS



MC00124

Item	Part Number	Qty	Description
1	2621700W1	1	SHIELD, RIGHT
2	2621710W1	1	SHIELD, LEFT
3	2621731W91	1	SUPPORT ASSEMBLY, SHIELD, RH
4	2621741W91	1	SHIELD ASSEMBLY
5	2621781W92	1	SUPPORT ASSEMBLY, SHIELD
6	353691X1		BOLT, HEX 3/8-16 UNC X 1
7	355619X1		WASHER, WIDE FLAT 3/8
8	364217X1		NUT, HEX FLANGE LOCK 3/8-16 UNC
9	1787520W1	4	BRACKET, LATCH ANCHOR
10	353679X1		BOLT, HEX 5/16-18 UNC X 1
12	776682	4	LATCH, RUBBER
13	354601X1		BOLT, HEX 1/4-20 UNC X 1 3/4
14	915885W1		NUT, HEX FLANGE 1/4-20 UNC
15	2463080W1	4	CATCH, SHIELD
16	373105X1		SCREW, PHLPS PAN HEAD #10-24 UNC X 3/8
17	353445X1		WASHER, LOCK #10
18	354120X1		NUT, HEX LOCK #10-24 UNC
19	101162M1	2	SHIELD
20	2620791W91	2	BRACKET ASSEMBLY
21	2612040W1	1	SHIELD, LEFT
22	2612070W1	1	SHIELD, RIGHT
24	353679X1		BOLT, HEX 5/16-18 UNC X 1
25	355618X1		WASHER, WIDE FLAT 5/16
26	104346W1		NUT, HEX FLANGE LCK SAE 8 5/16-18 UNC
27	102864M91	1	SHIELD SUPPORT ASSEMBLY, LH

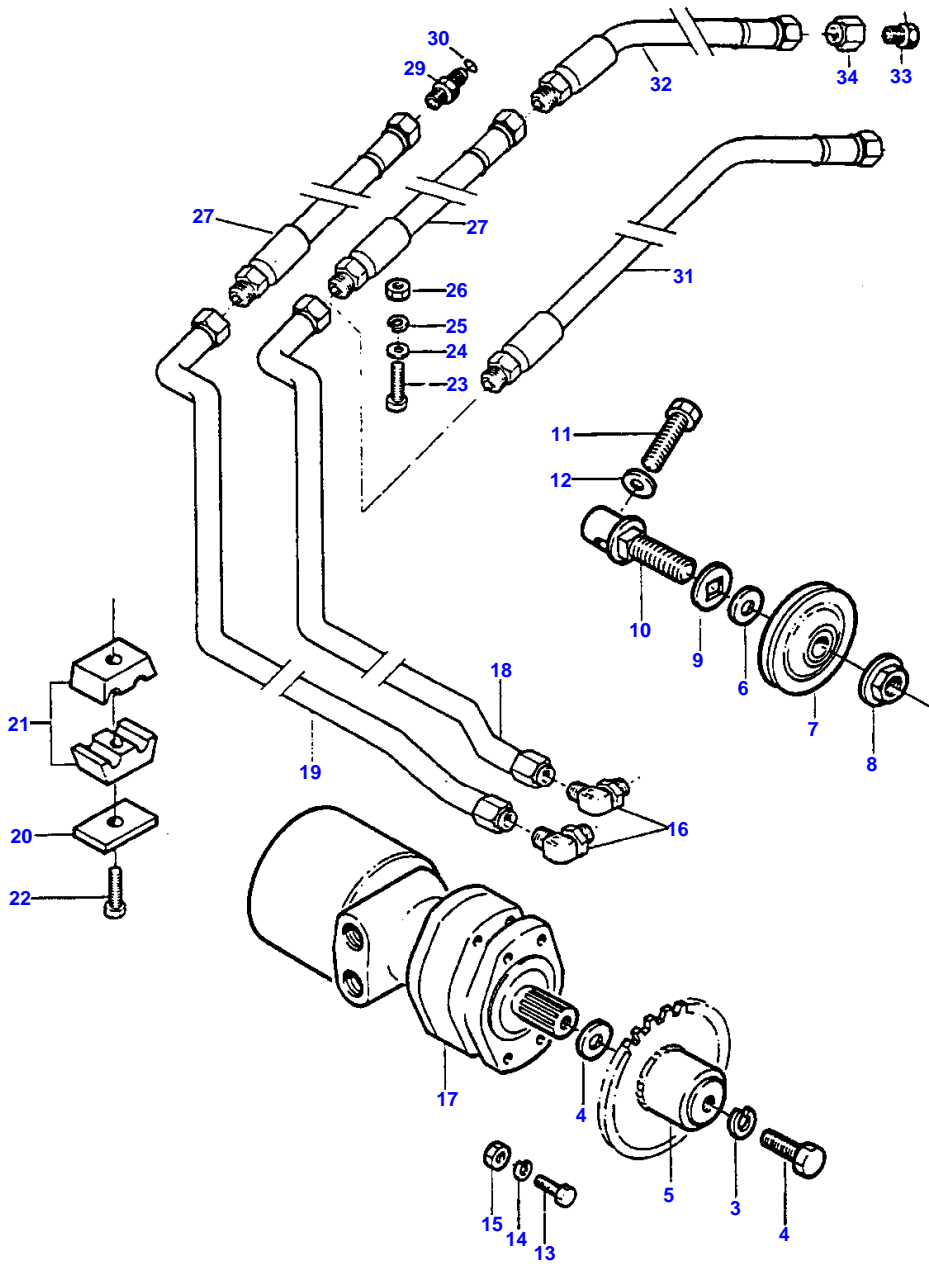
MC00124

B-13

MF 8570 COMBINE
HEADER

36

HEADER REVERSER



MC00125

Item	Part Number	Qty	Description
2	353609X1	1	BOLT, HEX 5/8-18 UNF X 1 1/4
3	70917373	1	WASHER, LOCK 5/8
4	363282X1		WASHER, SPECIAL FLAT 688 X 1 X 048
5	101624M91	1	SPROCKET ASSEMBLY 20T 3/4 P
	71379631	1	SPROCKET ASSEMBLY 15T (IF USED)
6	353760X1	1	WASHER, NARROW FLAT 5/8
7	510061W1	1	SPROCKET, CHAIN 15 TEETH
8	915891W1	1	NUT, HEX FLANGE LOCK 5/8-11 UNC
9	368933X1	2	WASHER, SQUARE HOLE FLAT
10	253059M2	1	BOLT, SPECIAL 5/8-11 UNC
11	353452X1	1	BOLT, SPECIAL 1/2-13 UNC X 6 1/2
12	353758X1	1	WASHER, NARROW FLAT 1/2
13	353724X1	4	BOLT, HEX 1/2-13 UNC X 1 1/2
14	353439X1	4	WASHER, LOCK 1/2
15	375098X1	4	NUT, HEX 1/2-13 UNC
16	364875X91	2	ELBOW ASSEMBLY 7/8-14 ORB X 3/4-16 37? FLARE
17		1	MOTOR AND CLUTCH ASSEMBLY (SEE MOTOR & CLUTCH LISTING)
18	101628M92	1	TUBE ASSEMBLY 1/2
19	101627M92	1	TUBE ASSEMBLY 1/2
20	101646M1	2	COVER PLATE
21	148022M1	2	DOUBLE CLAMP
22	353673X1	1	BOLT, HEX 1/4-20 UNC X 1 1/2
23	70921159	1	BOLT, HEX 1/4-20 UNC X 2 1/4
24	70918264	1	WASHER, NARROW FLAT 1/4
25	353441X1	1	WASHER, LOCK 1/4
26	70916622	1	NUT, HEX 1/4-20 UNC
27	101658M91	2	HOSE ASSEMBLY 3/8 X 3/8 (QTY. 1 FOR S/N M00293 & UP)
29	832159M91	1	CONNECTOR ASSEMBLY 7/8-14 ORB X 3/4-16 37? FLARE
30	70921205	1	O-RING 3/4 ID X 3/32
31	104082W91	1	HOSE ASSEMBLY 3/8 X 54 (EFF. S/N M00293 & UP)
32	104084W91	1	HOSE ASM. 3/8 X 145(PRIOR S/N M00293)
33	356632X1	1	REDUCER 3/4 TO 1/2(PRIOR S/N M00293)
34	22241X	1	TUBE NUT 1 1/16-12 37? FLARE (PRIOR S/N M00293)
35	70925094	5	TIE STRAP (NOT ILLUS.; PRIOR S/N M00293)

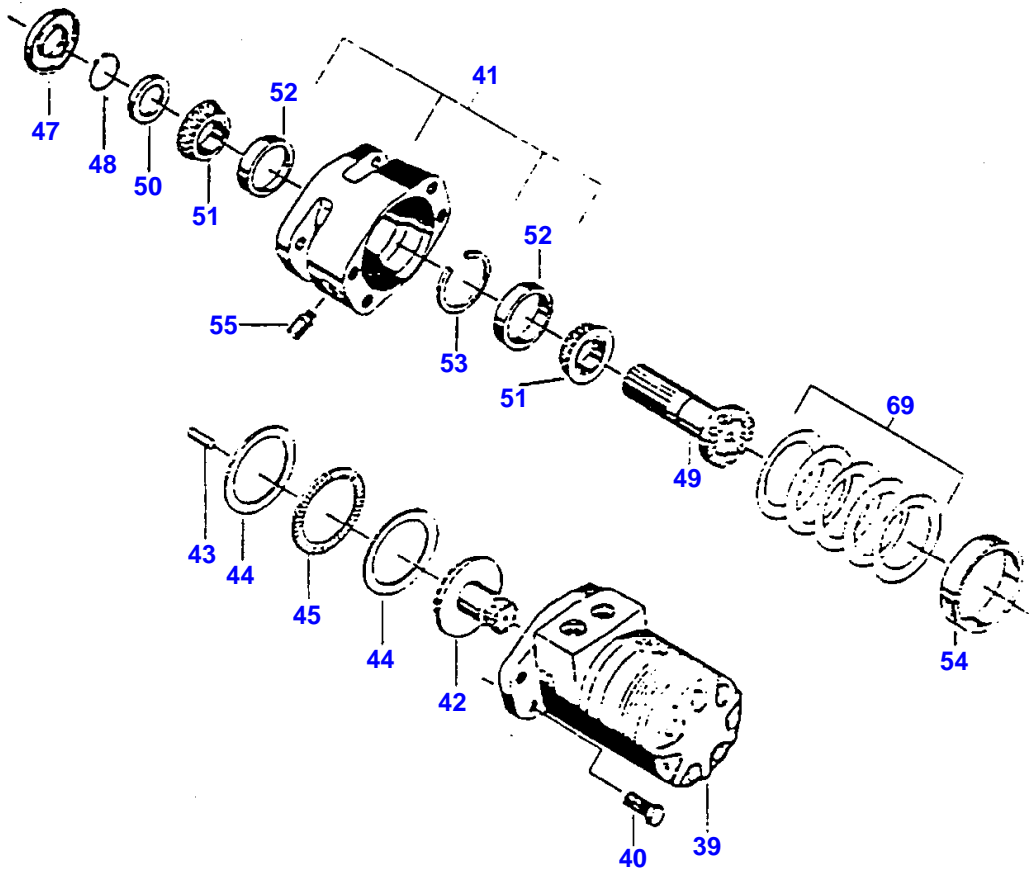
MC00125

B-15

38

MF 8570 COMBINE
HEADER

HEADER REVERSER MOTOR AND CLUTCH
PRIOR S/N N12718



MC00126

Item	Part Number	Qty	Description
	104307W91		MOTOR AND CLUTCH ASSEMBLY, HYDRAULIC
39		1	MOTOR SUB ASSEMBLY (SEE NEXT LISTING)
40	353724X1	4	BOLT 1/2-13 UNC X 1 1/2
41	104473W91	1	*CLUTCH HOUSING ASSEMBLY (INCLUDES 2-ITEM 52 & 1-ITEM 53)
42	103730W1	1	SPLINED GEAR, DRIVE
43	70918597	1	PIN, DOWEL 5 X 15 LONG
44	103732W1	2	WASHER, THRUST
45	103733W1	1	BEARING, THRUST
47	103734W1	1	*SEAL, DIRT AND WATER
48	103735W1	1	*RING, RETAINING
49	103767W1	1	SHAFT, DRIVE
50	103736W1	1	*WASHER, THRUST
51	103737W1	2	*CONE, BEARING
52	105733W1	2	*CUP, BEARING
53	103738W1	1	*RING, RETAINING
54	103739W1	1	*SPACER
55	103727W1	1	PLUG, VENT
69	103740W91	1	*KIT, DISC SPRING
70	103742W91		*KIT, HOUSING
	103743W91		KIT, HOUSING AND SHAFT (INCL. * ITEMS)
	103742W91		KIT, HOUSING (INCL ITEMS 41,51-54, 69)

MC00126

Buy Now



Our support email:

ebooklibonline@outlook.com