

Page Title	Page Number
PUBLICATION INFORMATION	0
ELEVATOR - ELEVATOR, FEEDER	26
ELEVATOR - ELEVATOR TOP SHAFT AND DRIVE	30
ELEVATOR - ELEVATOR TO TABLE DRIVE	32
ELEVATOR - ELEVATOR SHIELDS	34
HEADER - HEADER REVERSER, LINES & FITTINGS	36
HEADER - HEADER REVERSER, MOTOR & CLUTCH, COMPONENTS	38
BEATER - FRONT BEATER	40
BEATER - MAIN COUNTERSHAFT AND FRONT BEATER, DRIVES WITH SHOCK ABSORBER	42
CONCAVE - INLET HOUSING AND STONE TRAP	46
CONCAVE - CONCAVE CONTROLS	48
CONCAVE - ROTOR	52
CONCAVE - ROTOR GEAR BOX	54
CONCAVE - HYDROSTATIC MOTOR, ROTOR	56
SEPARATOR - SEPARATOR GRATES	58
SEPARATOR - GRAIN PAN	60
SEPARATOR - SHAKER SHOE AND SIEVES	62
SEPARATOR - PITMAN DRIVE	66
HOUSING AND FANNING MILL - LOWER AUGER HOUSING AND FANNING MILL	68
HOUSING AND FANNING MILL - VARIABLE SPEED FAN DRIVE	72
ELEVATOR - GRAIN ELEVATOR (LOWER)	74
ELEVATOR - GRAIN ELEVATOR (UPPER)	76
ELEVATOR - RETURN ELEVATOR (LOWER)	78
ELEVATOR - RETURN ELEVATOR (UPPER)	80
UNLOADING AUGER - UNLOADING AUGER (LOWER)	82
UNLOADING AUGER - UNLOADING AUGER (CENTER)	84
UNLOADING AUGER - UNLOADING AUGER (UPPER), (STD AND EXTENDED)	86
UNLOADING AUGER - UNLOADER CONTROLS	88
GRAIN TANK	90
REAR ROTOR HOUSING	92
FUEL SYSTEM - FUEL TANK, LINES & FUEL FILTER/WATER, SEPARATOR	94
LADDER AND PLATFORM	96
REAR DECK - REAR DECK AND LADDER	98
SHIELDS - SIDE SHIELDS AND LADDER	100
SHIELDS - MUDSHIELDS	102
ELECTRICAL - ELECTRICAL HARNESS - FRONT	106
ELECTRICAL - ELECTRICAL HARNESS - REAR	110
ELECTRICAL - ENGINE AND BATTERY WIRING	112
ELECTRICAL - CONTROL CONSOLE	114
ELECTRICAL - CAB	116
ELECTRICAL - LIGHTS	118
ELECTRICAL - WIRING HARNESS MOUNTING BRACKETS AND, CLIPS	120
ELECTRICAL - STARTER	122
ELECTRICAL - ALTERNATOR - 130AMP	126
STRAW CHOPPER AND SPREADER - JACK SHAFT DRIVE	128
STRAW CHOPPER AND SPREADER - STRAW CHOPPER DRIVE	130
STRAW CHOPPER AND SPREADER - STRAW CHOPPER, STANDARD	132
STRAW CHOPPER AND SPREADER - STRAW CHOPPER, HIGH VELOCITY	134
STRAW CHOPPER AND SPREADER - STRAW CHOPPER HOOD ASSEMBLY	136
STRAW CHOPPER AND SPREADER - STRAW SPREADER, DRIVE	138
STRAW CHOPPER AND SPREADER - STRAW SPREADER, COMPONENTS	140
ENGINE - MAIN ENGINE DRIVES (260HP @ 2200RPM)	142
TRANSMISSION - HYDROSTATIC PUMPS & MOTORS, TANDEM PUMP	146
TRANSMISSION - HYDROSTATIC PUMP, PROPEL, COMPONENTS	148
TRANSMISSION - HYDROSTATIC PUMP, PROPEL, COMPONENTS	150
TRANSMISSION - HYDROSTATIC PUMP, PROPEL, COMPONENTS	152
TRANSMISSION - HYDROSTATIC PUMP, PROPEL, COMPONENTS	154
TRANSMISSION - HYDROSTATIC PUMP, ROTOR, COMPONENTS	156
TRANSMISSION - HYDROSTATIC PUMP, ROTOR	158
TRANSMISSION - HYDROSTATIC PUMP, ROTOR	160
TRANSMISSION - HYDROSTATIC PUMP, ROTOR	162
TRANSMISSION - HYDROSTATIC MOTOR, PROPEL, HEAVY DUTY TRANSMISSION	164
TRANSMISSION - HYDROSTATIC MOTOR, PROPEL, STD TRANSMISSION	166
TRANSMISSION - TRANSMISSION, STD TRANSMISSION	168
TRANSMISSION, AXLES & WHEELS - PRESSURE LUBE & PARKING BRAKE	172
TRANSMISSION, AXLES & WHEELS - TRANSMISSION, GEAR, INPUT SHAFT & GEARS	174
TRANSMISSION, AXLES & WHEELS - TRANSMISSION, GEAR, INTERMEDIATE & MAIN SHAFT	176
TRANSMISSION, AXLES & WHEELS - TRANSMISSION, GEAR, DIFFERENTIAL	178

TABLE OF CONTENT

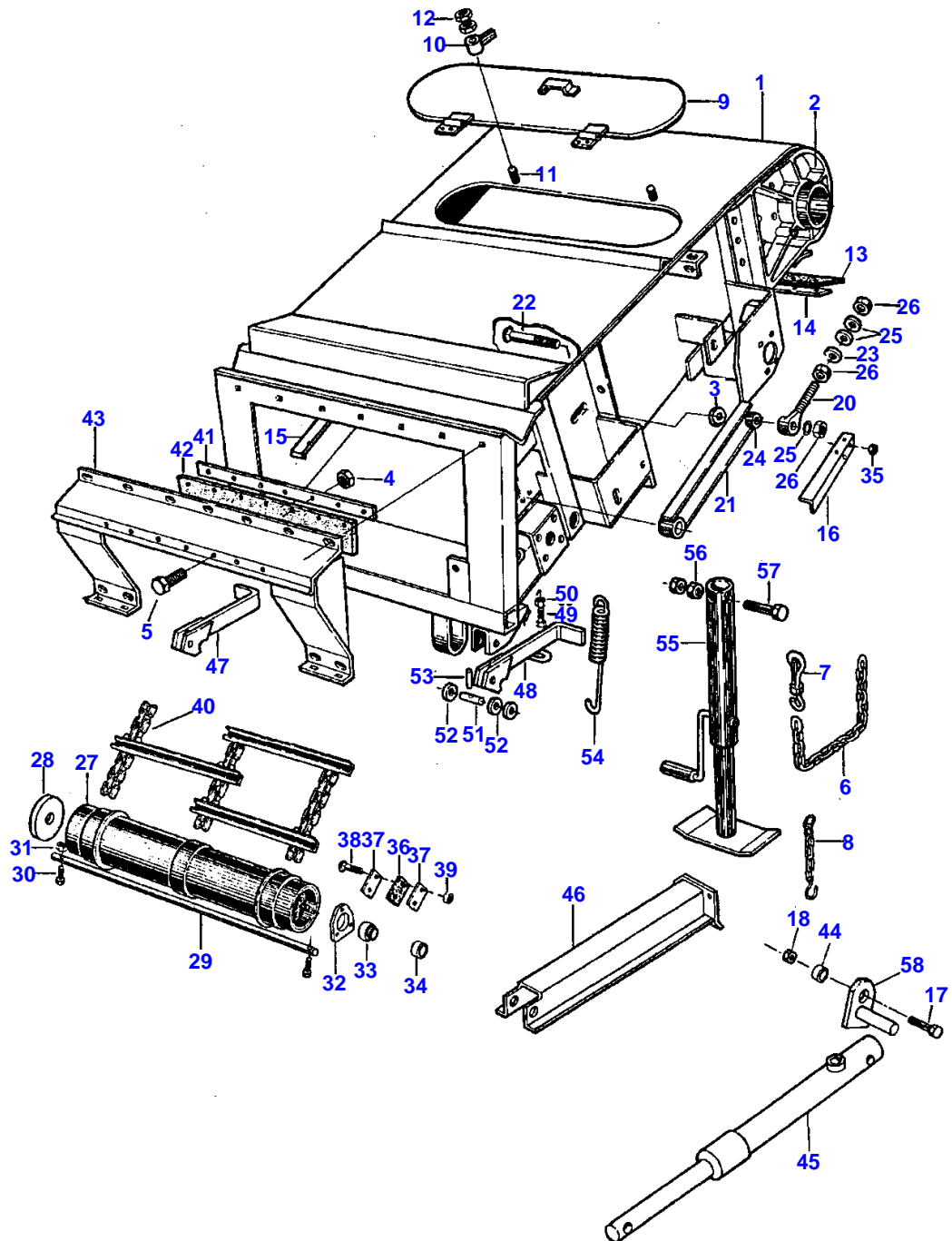
BRAKES - DISC BRAKES AND CYLINDERS	180
BRAKES - BRAKE PEDAL & LINKAGE	182
BRAKES - DISK BRAKE	186
MAIN FRAME - MAIN FRAME AND AXLE SUPPORT	188
MAIN FRAME - REAR AXLE, STANDARD	190
MAIN FRAME - REAR AXLE, REAR WHEEL ASSIST	194
REAR AXLE - REAR WHEEL ASSIST	198
REAR AXLE - HYDROSTATIC MOTOR, REAR WHEEL ASSIST	200
REAR AXLE - SELECTOR VALVE, LIMITER AND FLOW DIVIDER, REAR	202
FINAL DRIVE	204
FINAL DRIVE - FINAL DRIVE, HEAVY DUTY	208
FINAL DRIVE - FINAL DRIVE, ADAPTER - RICE	212
WHEELS	214
ENGINE	216
ENGINE - AIR INTAKE AND EXHAUST	220
ENGINE - RADIATOR, OIL COOLER AND A/C CONDENSER	222
ENGINE COMPARTMENT - ROTARY SCREEN AND DRIVE	224
ENGINE COMPARTMENT - ENGINE COVERS	228
GREASE HARNESS	230
DRIVES - BELTS (LH)	232
DRIVES - BELTS (RH)	234
DRIVES - CHAINS	236
DRIVES - CHAINS, CONVEYOR	238
CAB - CAB ASSEMBLY	240
CAB - CAB INTERIOR	244
CAB - HEATER AND AIR CONDITIONING UNIT, LINES, FITTINGS & MOUNTING	246
CAB - HEATER AND AIR CONDITIONING UNIT, COMPONENTS	248
CAB - AIR CONDITIONING COMPRESSOR, R134A	250
CAB - SEAT ASSEMBLY	252
CAB - WINDSHIELD WIPER	254
CAB - CONTROL BOX	256
STEERING - STEERING COLUMN	258
STEERING - STEERING CONTROL VALVE, COMPONENTS	260
CAB - THROTTLE CONTROL	262
CAB - GEAR SHIFT CONTROLS	264
CAB - HYDROSTATIC CONTROLS	266
CAB - PRESSURE INCH CONTROL	268
HYDRAULICS - STEERING HYDRAULICS	270
HYDRAULICS - STEERING CYLINDER	272
HYDRAULICS - HEADER LIFT, REEL LIFT AND REEL DRIVE	274
HYDRAULICS - HEADER LIFT CYLINDERS - ROD TYPE	276
HYDRAULICS - UNLOADER HYDRAULICS	278
HYDRAULICS - OIL COOLER, RESERVOIR AND LINES	280
HYDRAULICS - ROTOR PUMP, MOTOR AND LINES	282
HYDRAULICS - PROPEL PUMP, MOTOR AND LINES	284
HYDRAULICS - HEADER LIFT VALVE	286
HYDRAULICS - REEL DRIVE VALVE	288
HYDRAULICS - REEL LIFT VALVE	290
HYDRAULICS - HEADER REVERSER VALVE	292
HYDRAULICS - UNLOADER SWING VALVE	294
HYDRAULICS - LATERAL TILT VALVE	296
HYDRAULICS - UNLOADER ENGAGE	298
HYDRAULICS - HYDRAULIC PUMP LINES	300
HYDRAULICS - HYDRAULIC PUMP	302
HYDRAULICS - REEL FORE/AFT VALVE	304
PAINT AND OIL	306
LABELS AND DECALS - LABELS AND DECALS, (MASSEY	308
LABELS AND DECALS - LABELS AND DECALS, (MASSEY FERGUSON-ENGLISH)	310
RECOMMENDED STOCK LIST	312

B-3

26

MF 8780 COMBINE
ELEVATOR

ELEVATOR, FEEDER



Item	Part Number	Qty	Description
1	2622741W93	1	HOUSING, ASSEMBLY, FEED
2	2570220W1	1	SUPPORT, TOP FEEDER SHAFT, LEFT (STD)
	2570230W1	1	SUPPORT, TOP FEEDER SHAFT, RIGHT (STD)
	116106W1	1	CASTING, LH TOP FEEDER SHAFT E
	116107W1	1	CASTING, RH TOP FEEDER SHAFT E
3	353764X1	4	WASHER, NARROW FLAT (1)
4	915885W1	7	NUT, LOCK (1/4-20)
5	353669X1	7	BOLT, HEX (1/4-20 X 1)
6	1609200W1	1	CHAIN (18 LINKS)
7	1611180W1	1	HOOK, CHAIN SNAP
8		1	CHAIN ASSEMBLY B
9	1579361W91	1	DOOR ASSEMBLY, FEEDER
	369959X1	4	SCREW, MACHINE (#10-24 X 5/8)
	353445X1	4	WASHER, LOCK (#10)
	353753X1	4	WASHER, FLAT (#10)
10	2324290W1	2	RETAINER
11	364946X1	2	BOLT, CARRIAGE (1/4-20 UNC X 1 1/4)
12	375107X1	4	NUT, HEX JAM (1/4-20 UNC)
13	2506040W1	1	SEAL, FEEDER
14	2506050W1	1	STRIP, BOLTING
15	2623090W1	3	WEAR STRIP
16	2623950W2	2	ANGLE, SUPPORT
17	354276X1	4	BOLT, HEX (1/2-13 UNC X 1 1/4) D
18	368644X1	4	NUT, HEX FLANGE LOCK (1/2-13 UNC) D
20	103001M91	2	EYEBOLT
21	2541981W91	2	ARM ASSEMBLY, PIVOT
22	364424X1	2	BOLT, HEX (3/4-10 UNC X 3 1/2)
23	353775X1	2	WASHER, HEAVY HARDENED FLAT (3/4)
24	2541950W1	2	BUSHING (25/32 X 1 1/2 X 51/64)
25	195597M1	4	WASHER, SPECIAL HEAVY LOCK (3/4)
26	375100X1	6	NUT, HEX (3/4-10 UNC)
27	2570091W93	1	DRUM ASSEMBLY, FEEDER
28	101213M1	2	SEAL
29	2506540W1	1	SHAFT, FEEDER (42")
30	354613X1	2	BOLT, HEX (5/16-18 UNC X 2 1/4)
31	104346W1	2	NUT, HEX FLANGE LOCK SAE 8 (5/16-18 UNC)
32	101161M1	2	HOUSING, BEARING
33	50021	2	BEARING, BALL, W/COLLAR
34		2	COLLAR, BEARING (ORDER ITEM 33)
35	355566X1	4	NUT, HEX (3/8-16 UNC)
36	1587160W1	4	STOP, BOTTOM FEEDER SHAFT
37	1587180W2	8	PLATE, BOLTING
38	364535X1	8	BOLT, CARRIAGE (1/2-13 UNC X 2 1/4)
39	369066X1	8	NUT, HEX LOCK (1/2-13 UNC)
40	2623913W92	1	CHAIN AND SLAT (PLAIN) ASSEMBLY (SEE CONVEYOR CHAIN LISTING)
	111936W91	1	CHAIN AND SLAT (SERRATED) ASSEMBLY (SEE CONVEYOR CHAIN LISTING)
41	2569610W1	1	STRIP, CLAMPING
	369064X1	6	NUT, HEX LOCK (3/8-16 UNC)
42	2569600W1	1	FLAP, FEEDER
43	2564241W91	1	COVER ASSEMBLY, FEEDER
44	274755M1	4	SPACER D
45	112118W91	2	CYLINDER ASSEMBLY, HEADER LIFT C (SEE HEADER LIFT CYLINDER LISTING)
46	112777W91	1	LIFT LOCK ASSEMBLY
47	101148M92	1	LATCH ASSEMBLY, RH
48	101149M92	1	LATCH ASSEMBLY, LH
49	354262X1	2	BOLT, HEX (3/8-16 UNC X 1 1/2)
50	375109X1	2	NUT, HEX JAM (3/8-16 UNC)
51	1718230W2	2	PIN, PIVOT
52	355621X1	6	WASHER, WIDE FLAT (1/2)
53	764485M1	2	PIN, ROLL (3/16 X 1)
54	1681180W1	2	SPRING, LATCH (7 51/64 FREE LENGTH)
55	2628971W91	1	JACK ASSEMBLY A
56	354734X1	1	BOLT, HEX (3/4-10 UNC X 5) A
57	375100X1	2	NUT, HEX (3/4-10 UNC) A
58	104335W91	4	PIN ASSEMBLY D
	116176W91	-	KIT, PERFORMANCE PKG (TO REDUCE WINDING)
	101367M1	-	SWITCH, HEADER HEIGHT
	293766M1	-	SWITCH, STONE TRAP

NOTE:

A - ACCESSORY

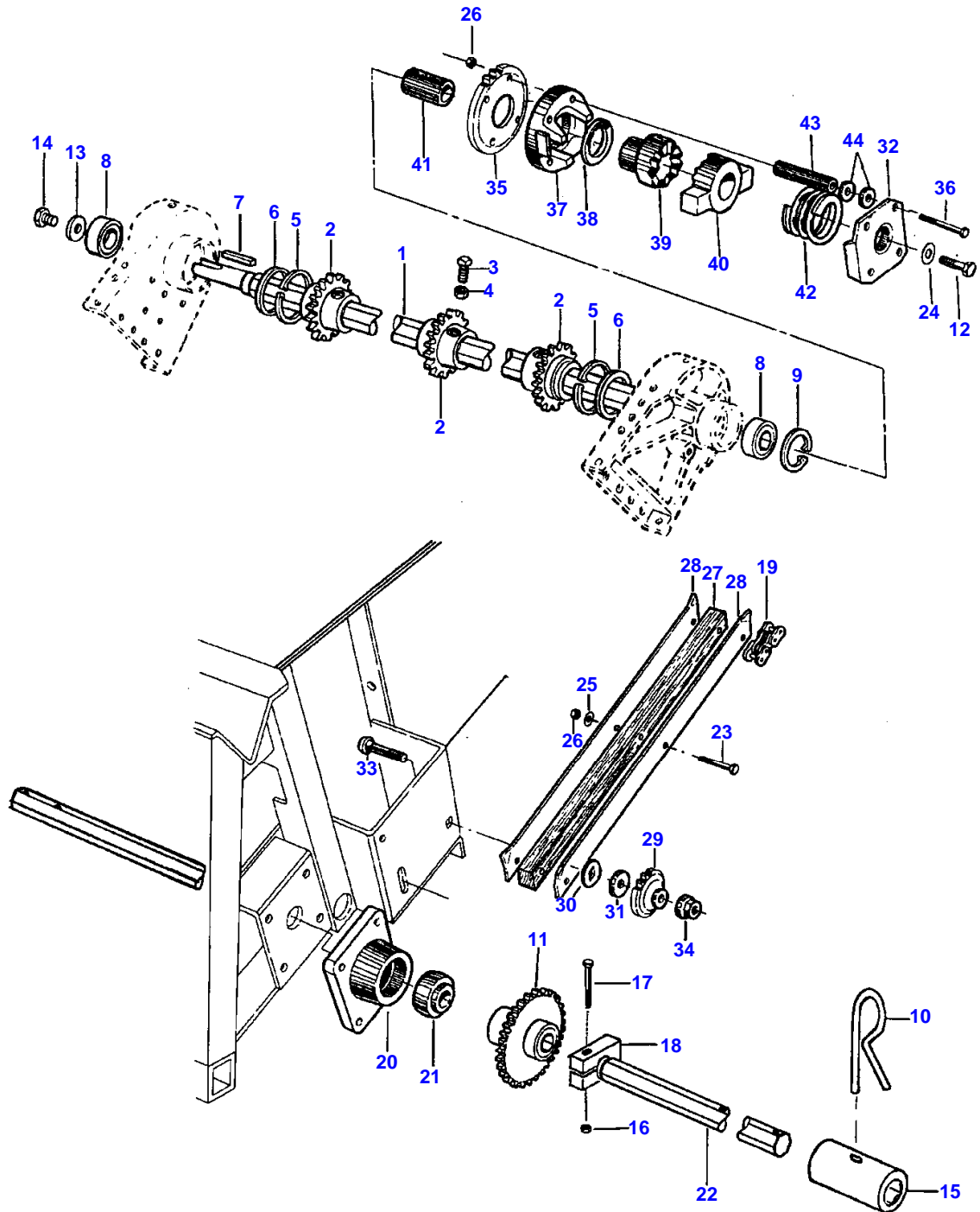
Item	Part Number	Qty	Description
			B - NOT A REPAIR ITEM, PROCURE LOCALLY
			C - QUANTITY IS 3 WITH THIRD CYLINDER
			ACCESSORY KIT
			D - QUANTITY IS 6 WITH THIRD CYLINDER
			ACCESSORY KIT
			E - INCLUDED IN PERFORMANCE PKG

B-7

30

MF 8780 COMBINE
ELEVATOR

ELEVATOR TOP SHAFT AND DRIVE



Item	Part Number	Qty	Description
1	101781M1	1	SHAFT, TOP FEEDER
2	2570170W2	3	SPROCKET, TOP FEEDER SHAFT (12 T) STD
	116110W91	2	SPROCKET, TOP FEEDER SHAFT A
3	353911X1	6	SCREW, SQUARE HEAD SET (1/2-13 UNC X 1)
4	375111X1	6	NUT, HEX JAM (1/2-13 UNC)
5	356003X1	2	SNAP RING
6	2570200W1	2	RING, SEAL
7	10738X	1	KEY (3/8 X 3/8 X 1 1/2)
8	71154722	2	BEARING (1 31/32 X 4 11/32 X 1 1/16)
9	355997X1	1	RING, SNAP, BEARING RETAINING
10	1579550W1	1	PIN, CLINCH
11	101975M91	1	SPROCKET ASSEMBLY (28 TEETH)
12	367451X1	1	BOLT, HEX LOCK (3/4 X 1 1/2)
13	2403610W1	1	WASHER (29/32 X 2 1/2 X 3/8)
14	907205W1	1	BOLT, HEX SAE 8 (7/8-9 UNC X 1 1/2)
15	1579540W1	1	COUPLING, C SHAFT
16	364217X1	1	NUT, HEX FLANGE LOCK (3/8-16 UNC)
17	354269X1	1	BOLT, HEX (3/8-16 UNC X 2 1/2)
18	104330W1	1	COLLAR, CLAMPING
19	103835W91	1	CHAIN ASSEMBLY (SEE CHAINS LISTING)
20	2466370W1	1	HOUSING, BEARING
21	1577800W1	1	BEARING
22	104363W1	1	SHAFT, LOWER COUNTERSHAFT
23	354271X1		BOLT, HEX (3/8-16 UNC X 2 3/4)
24	103834W1	1	WASHER, SPECIAL FLAT (.781 X .2 X .312)
25	355619X1		WASHER, WIDE FLAT (3/8)
26	364217X1		NUT, HEX FLANGE LOCK (3/8-16 UNC)
27	101141M1	1	GUIDE, FEEDER CHAIN, UPPER
28	101140M1	2	GUIDE, GUIDE SIDES
29	510061W1	1	SPROCKET, CHAIN (15 TEETH)
30	368933X1	2	SPACER, IDLER (SQUARE HOLE)
31	355623X1	1	WASHER, WIDE FLAT (5/8)
32	1659660W1	1	RETAINER, SPRING
33	363376X1	1	BOLT, CARRIAGE (5/8-11 UNC X 2 1/2)
34	915891W1	1	NUT, HEX FLANGE LOCK (5/8-11 UNC)
35	101783M1		SPROCKET, (35 TEETH)
36	357035X1	4	BOLT, HEX (3/8-16 UNC X 6)
37	1777403W91	1	DRIVE HOUSING ASSEMBLY
38	1717640W1	1	WASHER, FLAT (2 3/8 X 3 1/2 X 9/64)
39	2563800W1	1	JAW, FIXED
40	1659630W1	1	JAW, MOVABLE
41	101785M1	1	SPACER
42	1659650W1	1	SPRING, CLUTCH (4 COILS, 3 5/16 FREE LENGTH)
43	2573180W1	4	SPACER (31/64 X 5/8 X 3 21/32)
44	355619X1	8	WASHER, WIDE FLAT (3/8)
45	116110W91	2	SPROCKET, TOP FEEDER SHAFT A
	116176W91	-	KIT, PERFORMANCE PKG TO REDUCE WINDING

NOTE:

A - INCLUDED IN PERFORMANCE PKG KIT

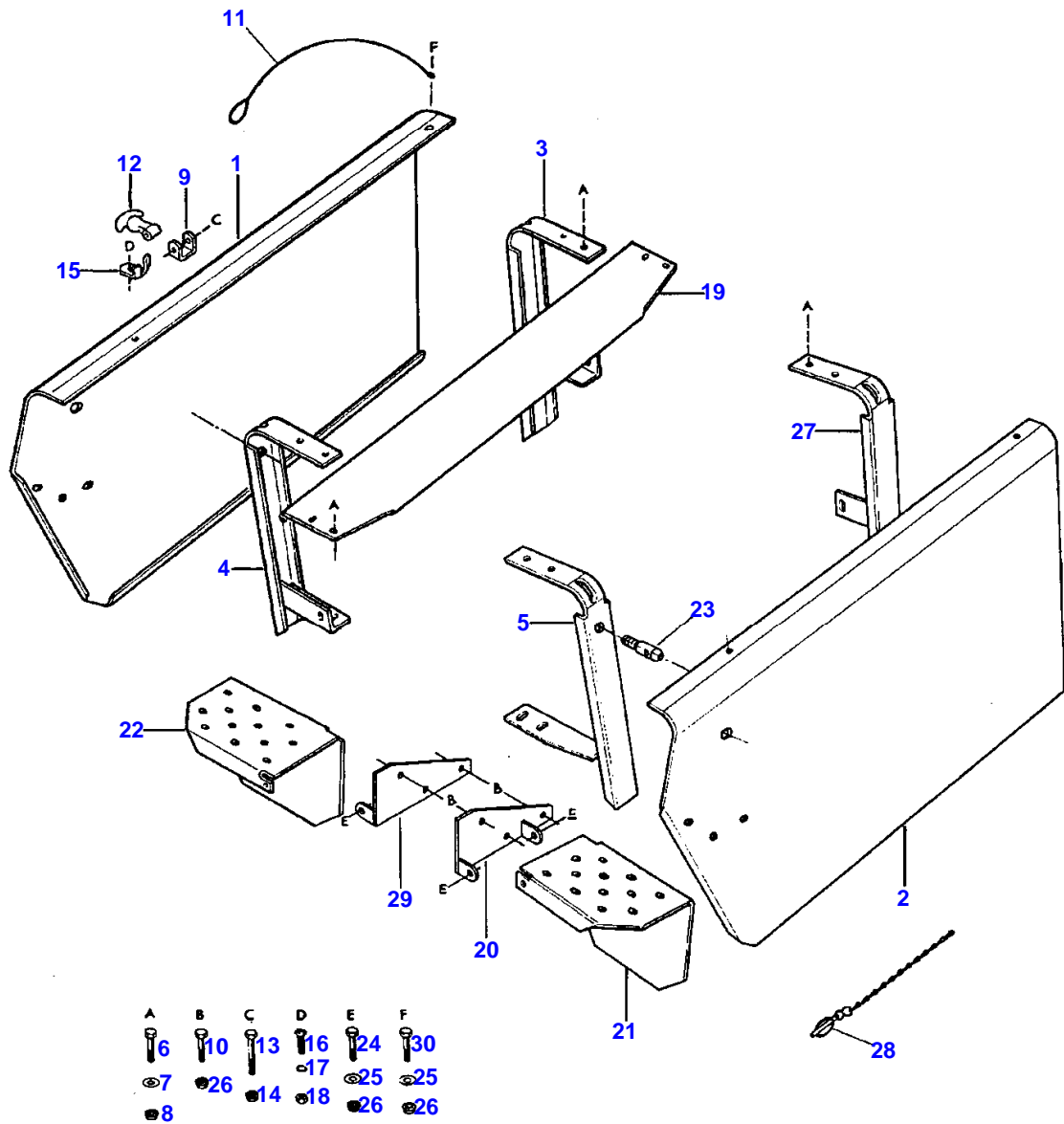
Item	Part Number	Qty	Description
1	104363W1	1	SHAFT, LOWER COUNTERSHAFT
2	105086W91	1	IDLER STOP CHAIN ASSEMBLY
3	375111X1	2	NUT, HEX JAM (1/2-13 UNC)
4	1827110W1	1	SHEAVE (3 GROOVE) 11 5/8OD
5	354653X1		BOLT, HEX (1/2-13 UNC X 2 3/4)
6	368644X1		NUT, HEX FLANGE LOCK (1/2-13 UNC)
7	1577800W1	1	BEARING
8	2466370W1	1	HOUSING, BEARING
9	370585X1	1	PIN, SPRING (1/4 X 2 1/4)
10	353724X1		BOLT, HEX (1/2-13 UNC X 1 1/2)
11	353767X1	1	WASHER, FLAT (1 3/8)
12	1810870W1	1	WASHER, SPHERICAL
13	2626120W1	1	EYEBOLT (1/2-13 UNC X 12 5/8 LONG)
14	2627000W1	1	SPRING(45 1/2 COILS, 17 1/4 FREE LENGTH)
15		1	BELT (SEE BELTS LISTING)
16	1786720W1	1	IDLER, FLAT (8)
	108274W1	1	IDLER, W/LIP
17	2545270W1	1	IDLER, FLAT (8OD)
20	354294X1	1	BOLT, HEX (5/8-11 UNC X 3 3/4)
21	354290X1	1	BOLT, HEX (5/8-11 UNC X 3 1/4)
23	355623X1		WASHER, WIDE FLAT (5/8)
24	354683X1	1	BOLT, HEX (5/8-11 UNC X 4 1/2)
25	353760X1		WASHER, NARROW FLAT (5/8)
26	2451440W1	2	SPACER (11/16 X 1 1/4 X 13/16)
27	2624513W91	1	ARM ASSEMBLY, IDLER
28	70915276	1	GREASE FITTING (1/8 NPTF, 90 DEG)
29	1689170W1	1	BUSHING (1 X 1 15/64 X 3/4)
30	1742670W1	1	BUSHING (63/64 X 15/64 X 1 1/2)
31	2441490W1	1	SLEEVE (41/64 X 63/64 X 3 1/16)
32	915891W1	1	NUT, HEX FLANGE LOCK (5/8-11 UNC)

B-11

34

MF 8780 COMBINE
ELEVATOR

ELEVATOR SHIELDS



ELEVATOR - ELEVATOR SHIELDS

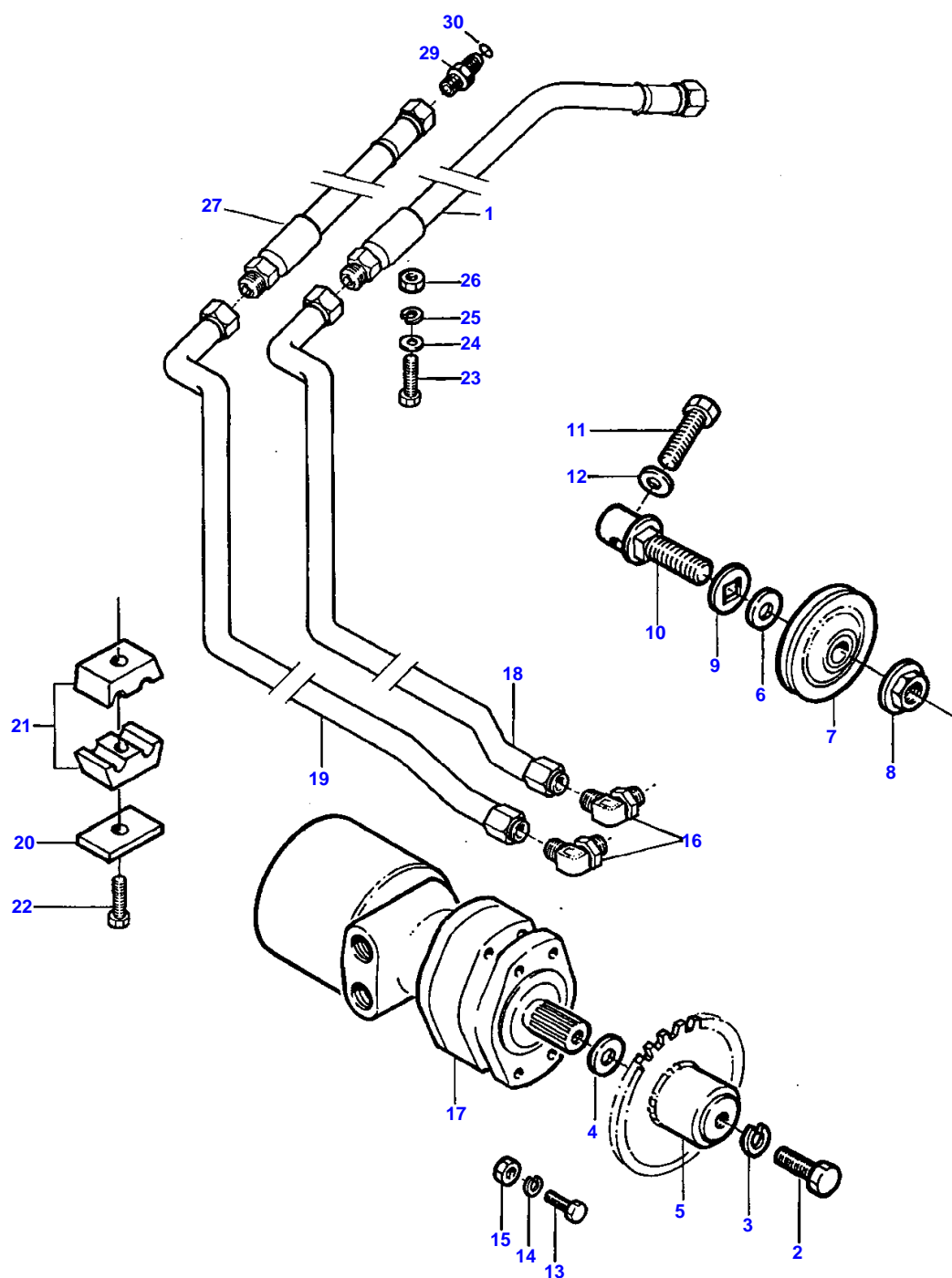
Item	Part Number	Qty	Description
1	2621700W2	1	SHIELD, RIGHT
2	2621710W2	1	SHIELD, LEFT
3	2621731W91	1	SUPPORT ASSEMBLY, SHIELD, RH
4	2621741W92	1	SHIELD ASSEMBLY
5	2621781W93	1	SUPPORT ASSEMBLY, SHIELD
6	353691X1		BOLT, HEX (3/8-16 UNC X 1)
7	355619X1		WASHER, WIDE FLAT (3/8)
8	364217X1		NUT, HEX FLANGE LOCK (3/8-16 UNC)
9	1787520W1	2	BRACKET, LATCH ANCHOR
10	353679X1		BOLT, HEX (5/16-18 UNC X 1)
11	112942W1	2	TETHER STRAP (28IN.)
12	776682	2	LATCH, RUBBER
13	354601X1		BOLT, HEX (1/4-20 UNC X 1 3/4)
14	915885W1		NUT, HEX FLANGE (1/4-20 UNC)
15	2463080W1	2	CATCH, SHIELD
16	373105X1		SCREW, PHILLIPS PAN HEAD (#10-24 UNC X 3/8)
17	353445X1		WASHER, LOCK (#10)
18	354120X1		NUT, HEX LOCK (#10-24 UNC)
19	101162M1	2	SHIELD
20	116010W91	1	BRACKET ASSEMBLY LH
21	2612040W2	1	SHIELD, LEFT
22	2612070W2	1	SHIELD, RIGHT
23	1656110W2	2	PIN, SHIELD LOCK
	355619X1	2	WASHER, FLAT (3/8)
	355566X1	2	NUT (3/8-16 UNC)
24	353679X1		BOLT, HEX (5/16-18 UNC X 1)
25	355618X1		WASHER, WIDE FLAT (5/16)
26	104346W1		NUT, HEX FLANGE LOCK SAE 8 (5/16-18 UNC)
27	102864M91	1	SHIELD SUPPORT ASSEMBLY, LH
28	1629760W2	2	KLIK PIN & CHAIN
29	116011W91	1	SUPPORT BRACKET RH
30	353677X1	2	BOLT, HEX (5/16-18 X 3/4)

B-13

36

MF 8780 COMBINE HEADER

HEADER REVERSE LINES & FITTINGS





Our support email:

ebooklibonline@outlook.com